

Re: 1000B e13th and 1002B e13th 78702

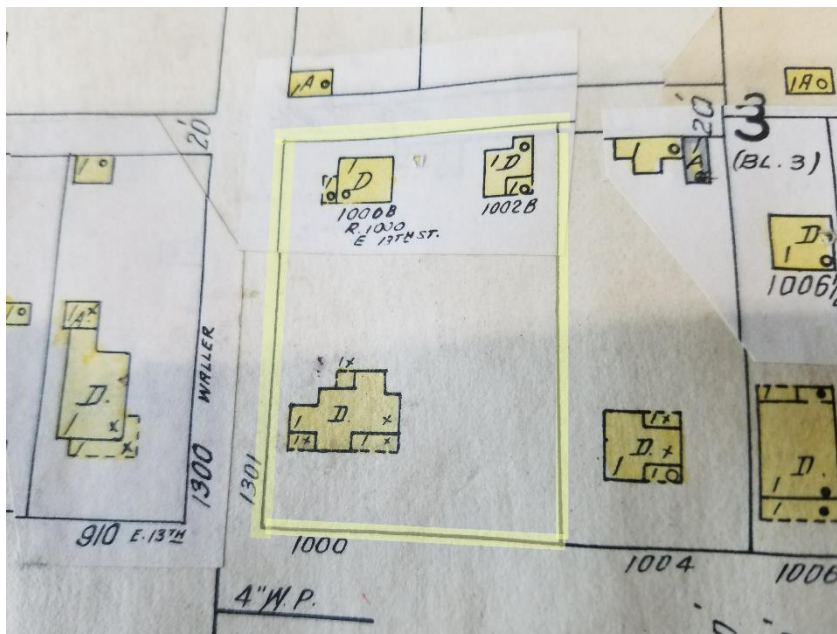
The Lost Palmquist Homes

This is a piece of an examination of two homes that were part of a greater estate owned by the William Palmquist (b.1865) and Minnie (Minorie) Palmquist (b.1866.) Sometime on or after 1902, around the time the Palmquists built their main homestead at 1000 e13th (of approx. 998sqft.) they built two additional homes, 1000B and 1002B which were 478sqft., and 472sqft., respectively.

Reference map top left & bottom left of **Sanborn Title Insurance Map, dated, 1935.**

Key: "D" denotes "Dwelling"

Top left: shows all 3 properties original to the Palmquist Homestead.



Bottom Left: Shows property boundary lines in 1935. Larger of the 3 homes within the boundaries is the Palmquist Main Home, which still exists today, (though it has had substantial addition.)

Though the story of houses 2&3 of Palmquist estate is still evolving, through assistance of local archivists and information provided by records kept by insurance companies, county appraisers building permits, waiver applications and related relocation permits, it has been determined that the two subject homes were

relocated or demolished around June of 2006 to make way for 1305 unit A and 1305 unit B of Waller St, 78702. The Palmquist home, formerly known as "1002B e13th" has a current address of "1703 #B Maple Avenue 78702. It sits behind 1703 #A Maple Avenue 78702, the former "house on wheels" that appears in the 2006 aerial survey. As as reference, #A is currently online and available for rental.

When the investor moved #A to Maple Avenue, he took 1002B e13th along with it.

It is not, as suggested, an "uninhabitable structure." It is in fact, a fully habitable, incoming producing rental HOME that has yet to outlive its utility. It is not okay, to say, "that is the past."

For further reference see **Aerial Maps dated 2006** prior to condominium development and **Aerial Maps dated 2017** as the block sits today.



Top Left:

Aerial Map in 2006, just prior to condominium development showing 1000B e13th and 1002B e13th.

Also shows Palmquist main home prior to addition.

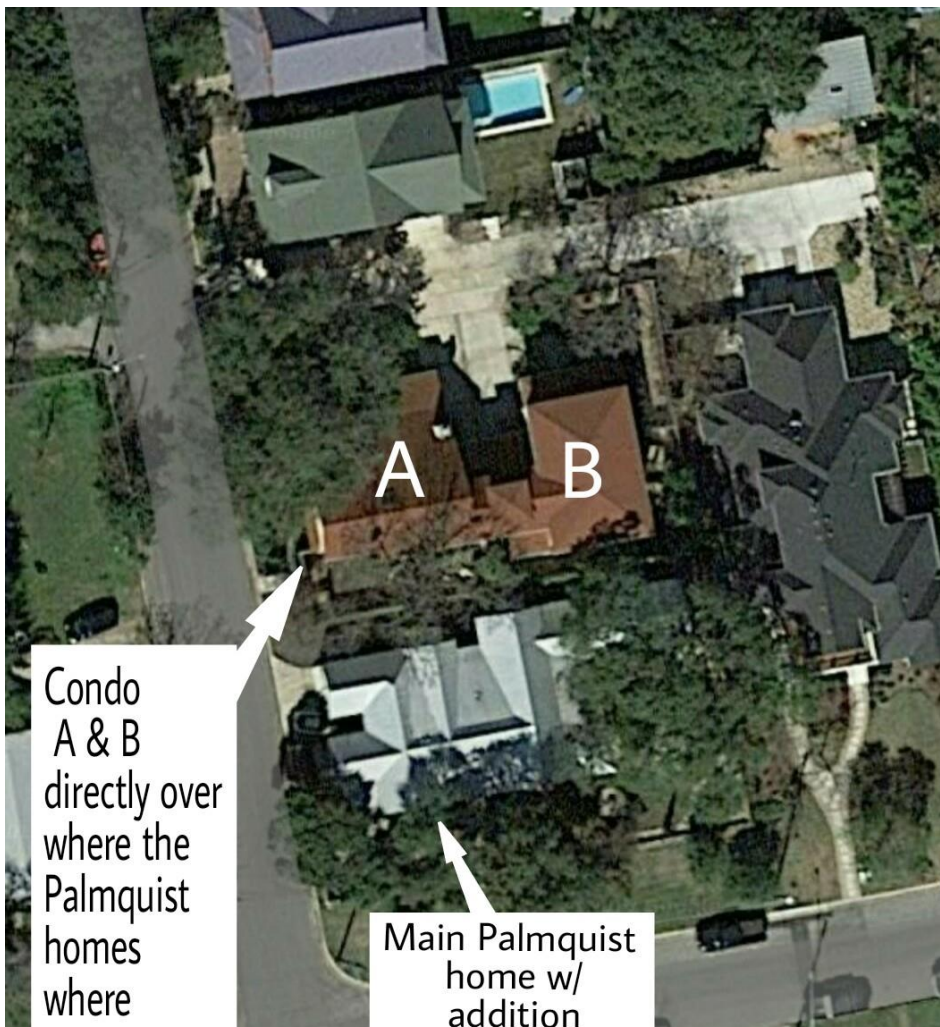


Bottom Left:

Another view from Aerial Map 2006, showing greater detail of 1002B e13th, reference tree and Palmquist main home prior to addition.



Top Left: Another view from Aerial Map 2006.



Bottom Left: Aerial Map from 2017, Waller block as it sits today. Note the condominiums are sited over old footprint of 1000B e13th and 1002B e13th.