



Austin Public Health



NORTHEAST HEALTH CLINIC

Austin City Council Health and Human Services Committee

April 12, 2017

**Shannon W. Jones, III
Director
Austin Public Health**

Northeast Health Clinic Partnership

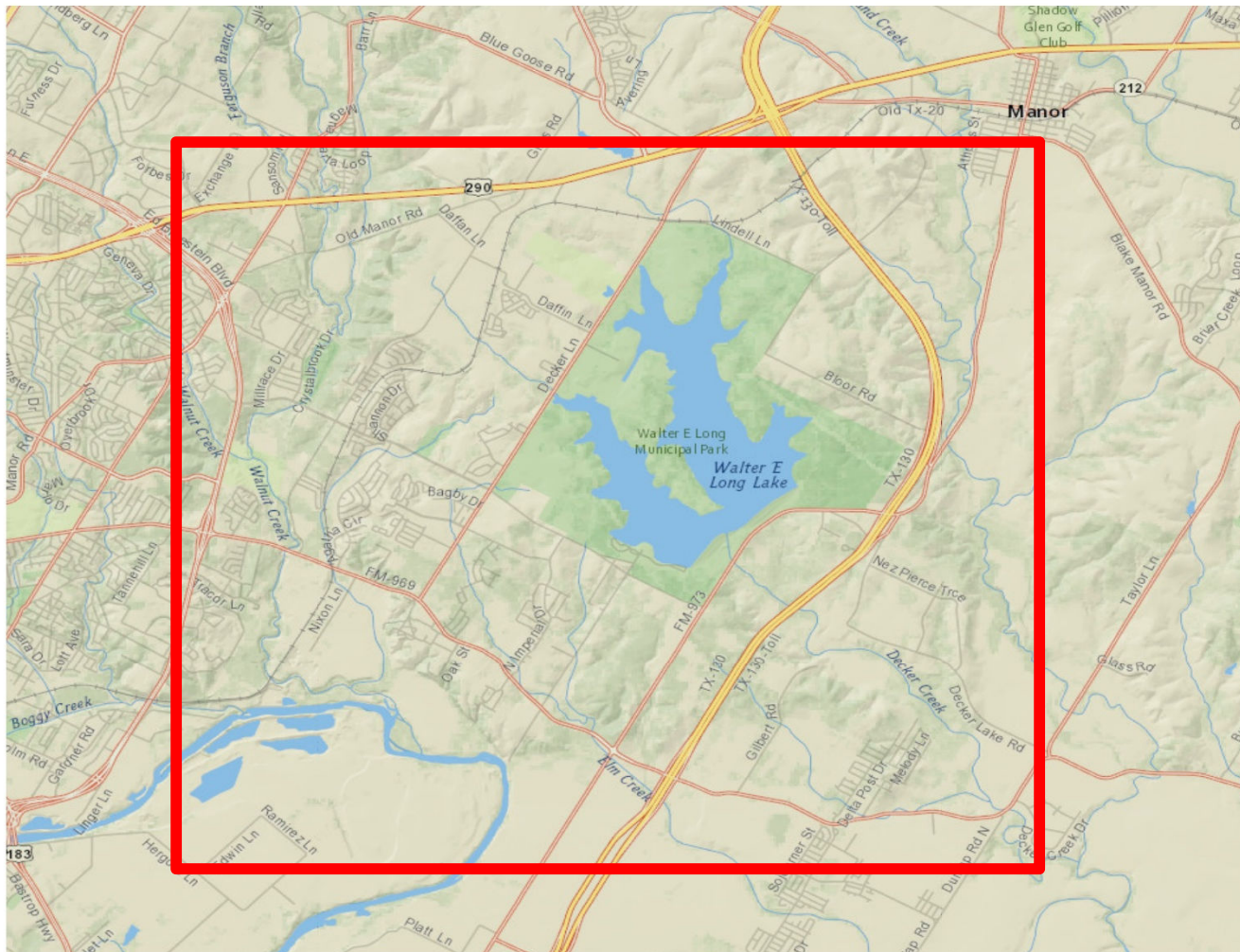
Objective: To increase access to primary and public health services for the Northeast neighborhoods in Austin and Travis County

Partners:

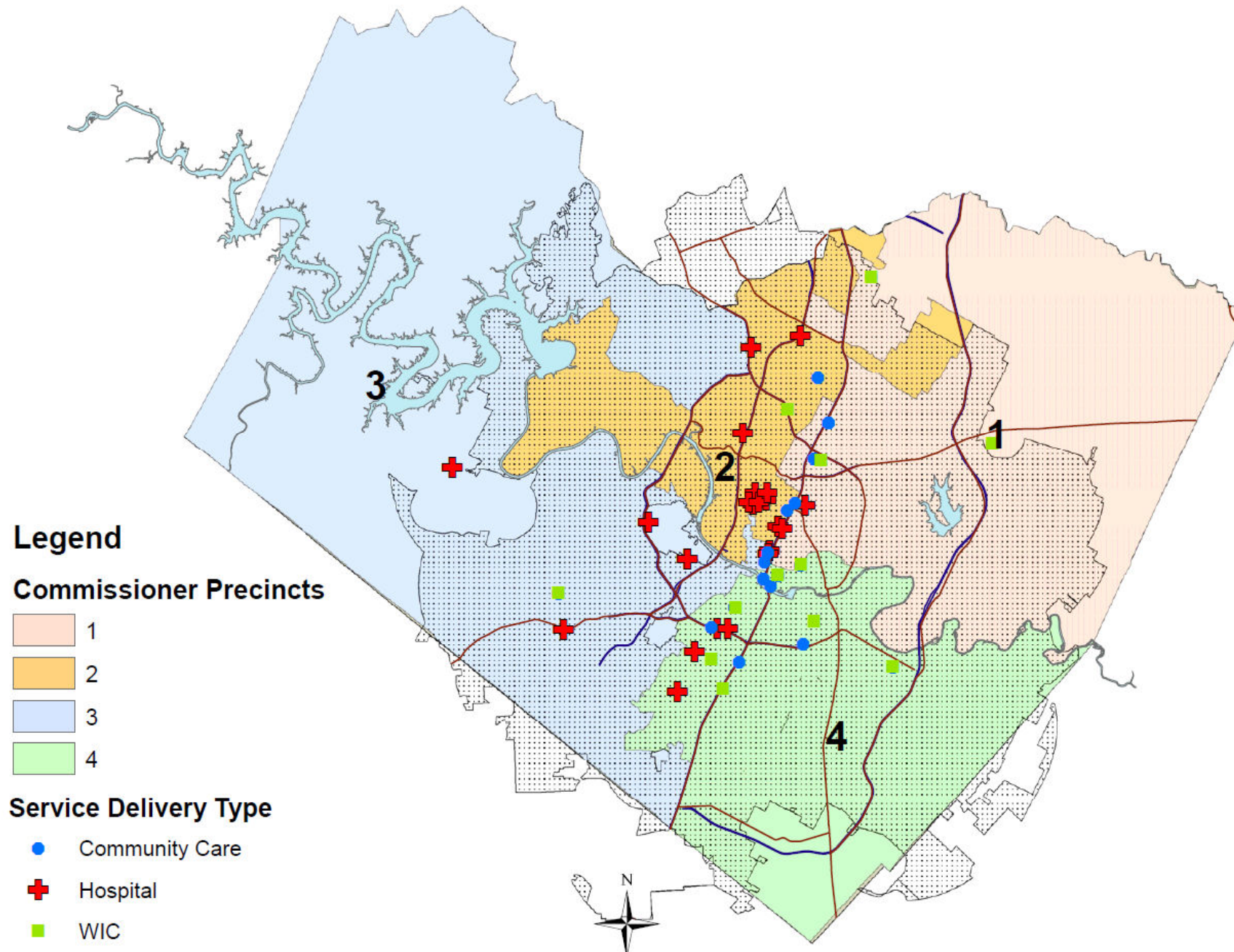
- Austin Public Health
- Central Health
- Colony Park Neighborhood Association
- Travis County Health and Human Services

Geographic Area

Adapted from ESRI Site map prepared by Austin Public Health



Clinics, Hospitals and Other Service Delivery



Community Profile 78723

KEY FACTS

32,156

Population



2.63

Average Household Size

33.3

Median Age

\$43,499

Median Household Income

HOUSING STATS



\$219,471

Median Home Value



\$5,911

Average Spent on Mortgage & Basics



\$692

Median Contract Rent

INCOME



\$43,499

Median Household Income



\$23,804

Per Capita Income



\$20,158

Median Net Worth

EDUCATION

20%

No High School Diploma



20%

High School Graduate



23%

Some College



37%

Bachelor's/Grad/Prof Degree

EMPLOYMENT



White Collar

60%



Blue Collar

21%



Services

19%

5.0%

Unemployment Rate

Race and Ethnicity

The largest group: White Alone (49.66)

The smallest group: Pacific Islander Alone (0.08)

Indicator	Value	Difference	
White Alone	49.66	-18.33	
Black Alone	23.34	+14.86	
American Indian/Alaska Native Alone	1.00	+0.24	
Asian Alone	2.46	-4.09	
Pacific Islander Alone	0.08	0	
Other Race	19.40	+6.85	
Two or More Races	4.06	+0.48	
Hispanic Origin (Any Race)	43.56	+9.14	

Bars show deviation from Travis County

Community Profile 78724

KEY FACTS

24,256

Population



Average
Household Size

26.5

Median Age

\$38,957

Median Household
Income

EDUCATION

38%

No High
School
Diploma



27%

High School
Graduate



23%

Some College



12%

Bachelor's/Grad/Prof
Degree

HOUSING STATS



\$99,756

Median Home Value



\$5,347

Average Spent on
Mortgage & Basics



\$739

Median Contract
Rent

EMPLOYMENT



40%

White Collar



36%

Blue Collar



24%

Services

3.7%

Unemployment
Rate

INCOME



\$38,957

Median Household
Income



\$14,574

Per Capita Income



\$19,453

Median Net Worth

Race and Ethnicity

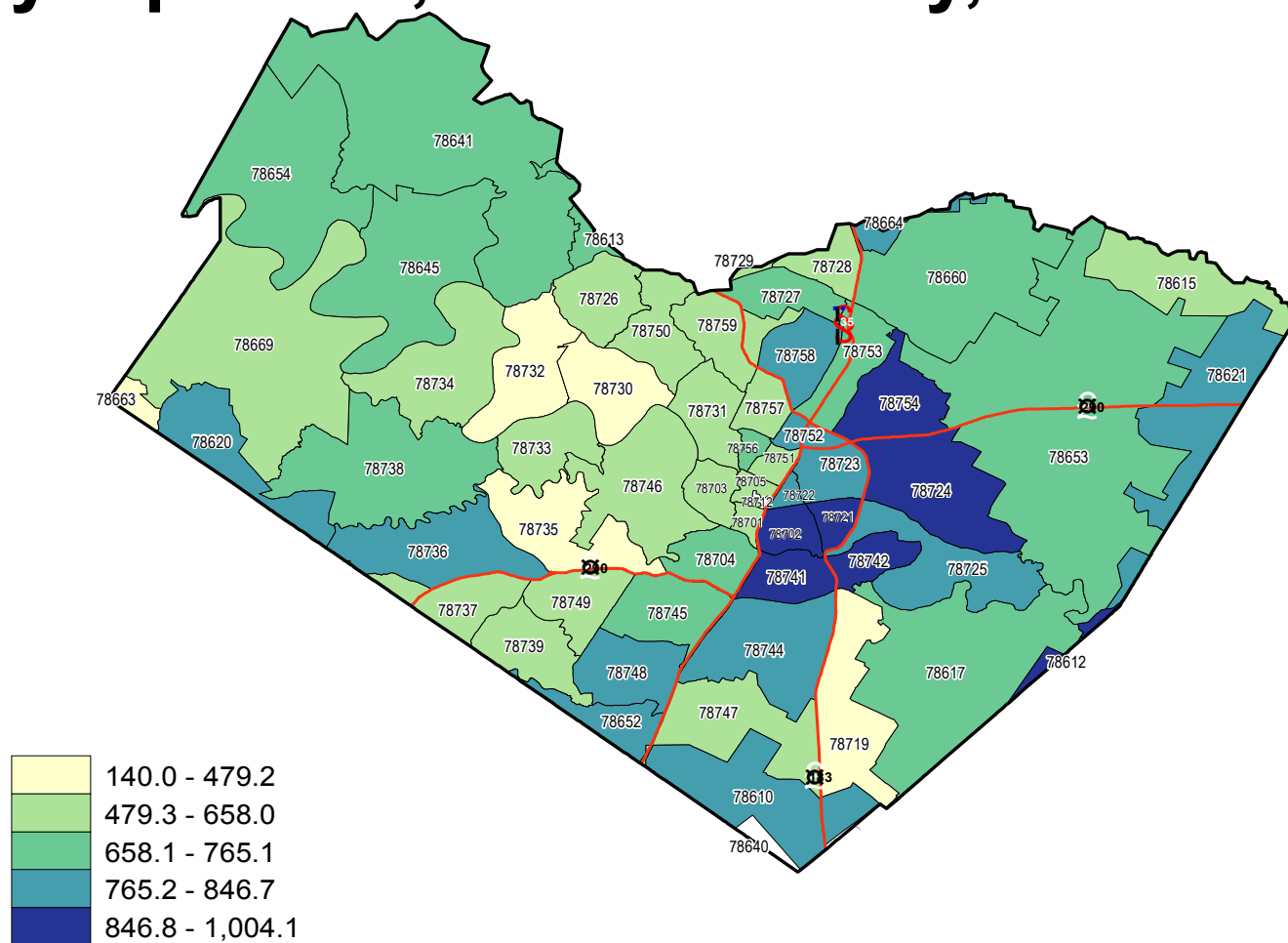
The largest group: Hispanic Origin (Any Race) (64.49)

The smallest group: Pacific Islander Alone (0.03)

Indicator	Value	Difference	
White Alone	39.28	-28.71	
Black Alone	26.34	+17.86	
American Indian/Alaska Native Alone	1.05	+0.29	
Asian Alone	0.50	-6.05	
Pacific Islander Alone	0.03	-0.05	
Other Race	29.34	+16.79	
Two or More Races	3.46	-0.12	
Hispanic Origin (Any Race)	64.49	+30.07	

Bars show deviation from
Travis County

Age-adjusted*† All-Cause Mortality Rates‡ by Zip Code, Travis County, 2011-2015



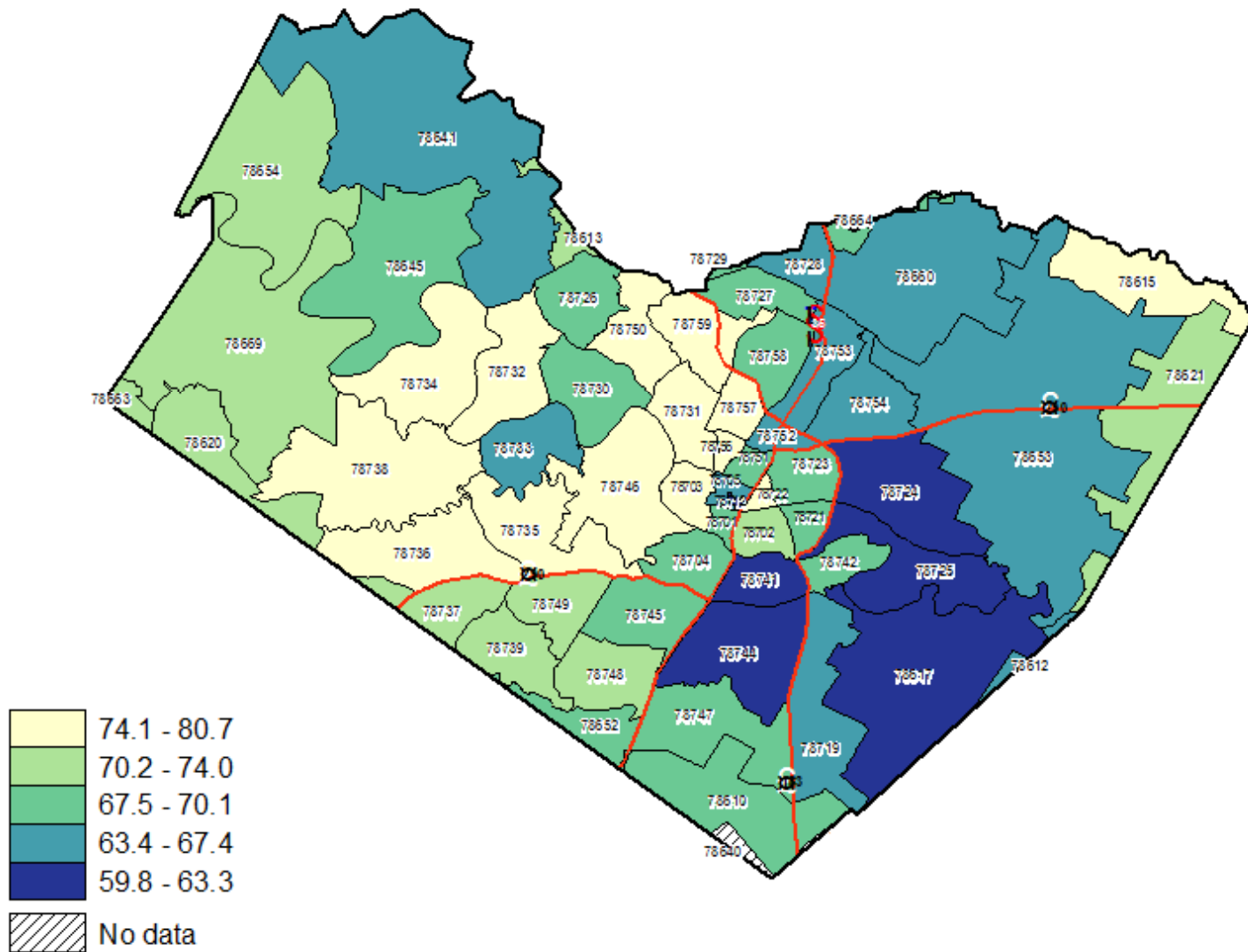
Source: Texas Department of State Health Services, Center for Health Statistics and U.S. Census Bureau, 2010 Census.

*Age adjustment uses US 2000 standard population

†In the case that the number of deaths were suppressed (due to value being between 1 and 9 deaths) an underestimated average of 4 was used. This was the case in 14 zip codes.

‡ Rates are per 100,000 population

Average Age at Death, Travis County, 2011-2015

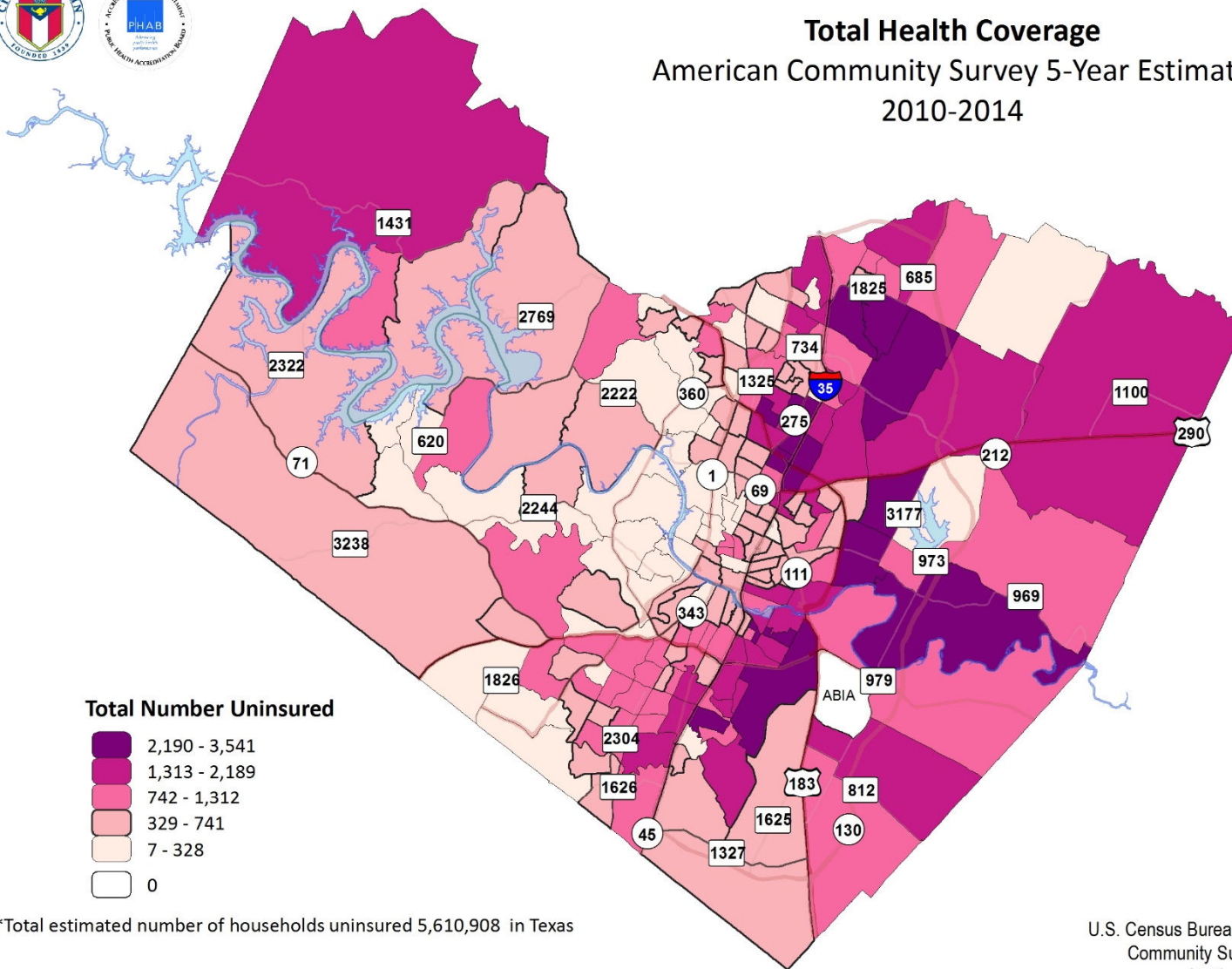


Source: Texas Department of State Health Services, Center for Health Statistics



Total Health Coverage

American Community Survey 5-Year Estimate 2010-2014



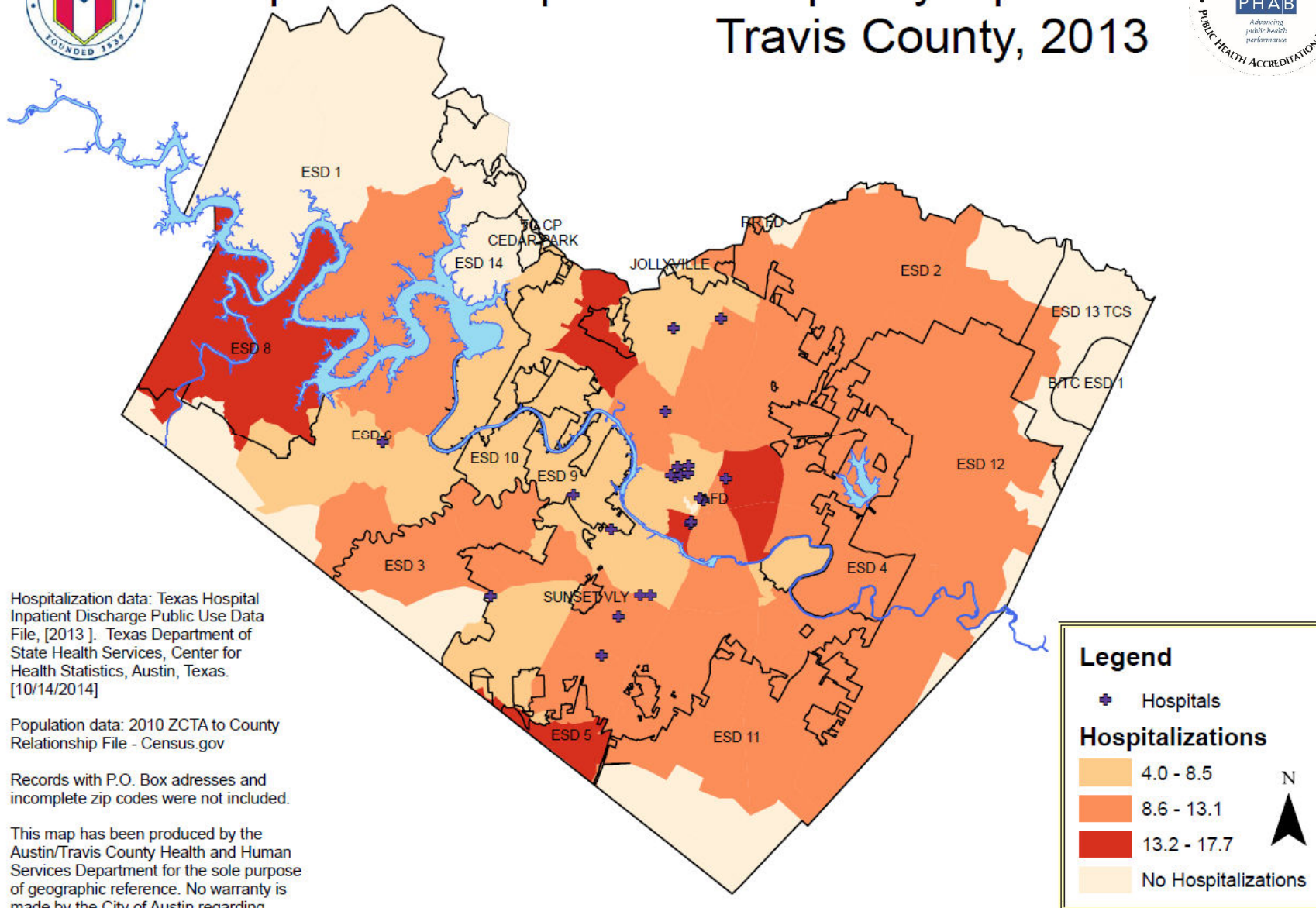
*Total estimated number of households uninsured 5,610,908 in Texas

This map was produced as a working staff map and is not warranted for any other use. No warranty is made by Austin Public Health regarding its accuracy and completeness.

Source:
U.S. Census Bureau, 2010-2014 American
Community Survey 5-Year Estimates.
Austin Public Health, 2016 tth



Hospitalizations per 100 People by Zip Code Travis County, 2013



Hospitalization data: Texas Hospital Inpatient Discharge Public Use Data File, [2013]. Texas Department of State Health Services, Center for Health Statistics, Austin, Texas. [10/14/2014]

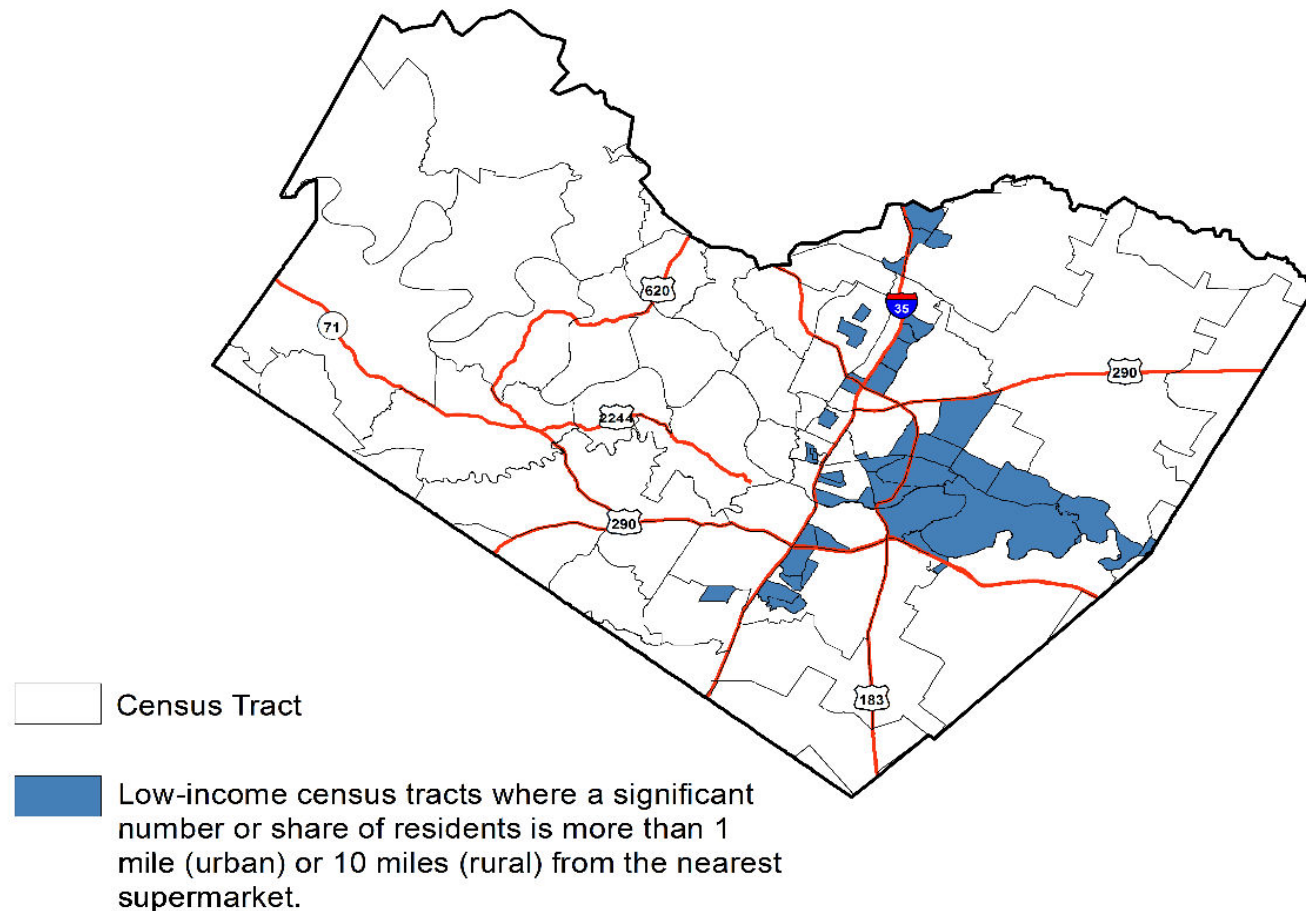
Population data: 2010 ZCTA to County Relationship File - Census.gov

Records with P.O. Box addresses and incomplete zip codes were not included.

This map has been produced by the Austin/Travis County Health and Human Services Department for the sole purpose of geographic reference. No warranty is made by the City of Austin regarding specific accuracy or completeness.

Color Scheme provided by ColorBrewer 2.0

United States Department of Agriculture Food Deserts by Census Tract, Travis County

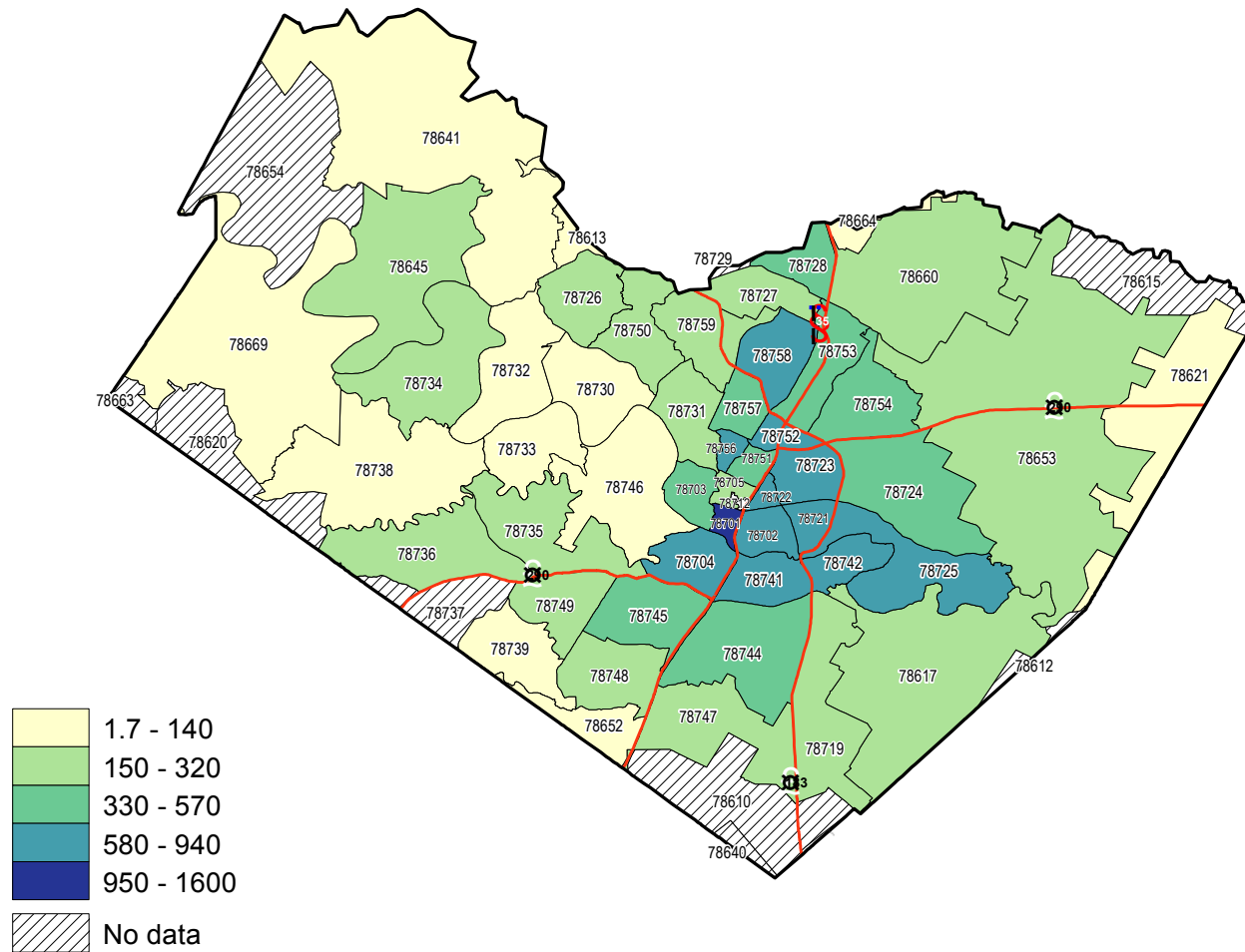


United States Department of Agriculture. Food deserts. <https://www.ers.usda.gov/data-products/food-access-research-atlas/go-to-the-atlas.aspx>

Chen D, Jaenicke EC, Volpe RJ. Food environments and obesity: Household diet expenditure versus food desert. *Am J Public Health* 106:881-8, 2016

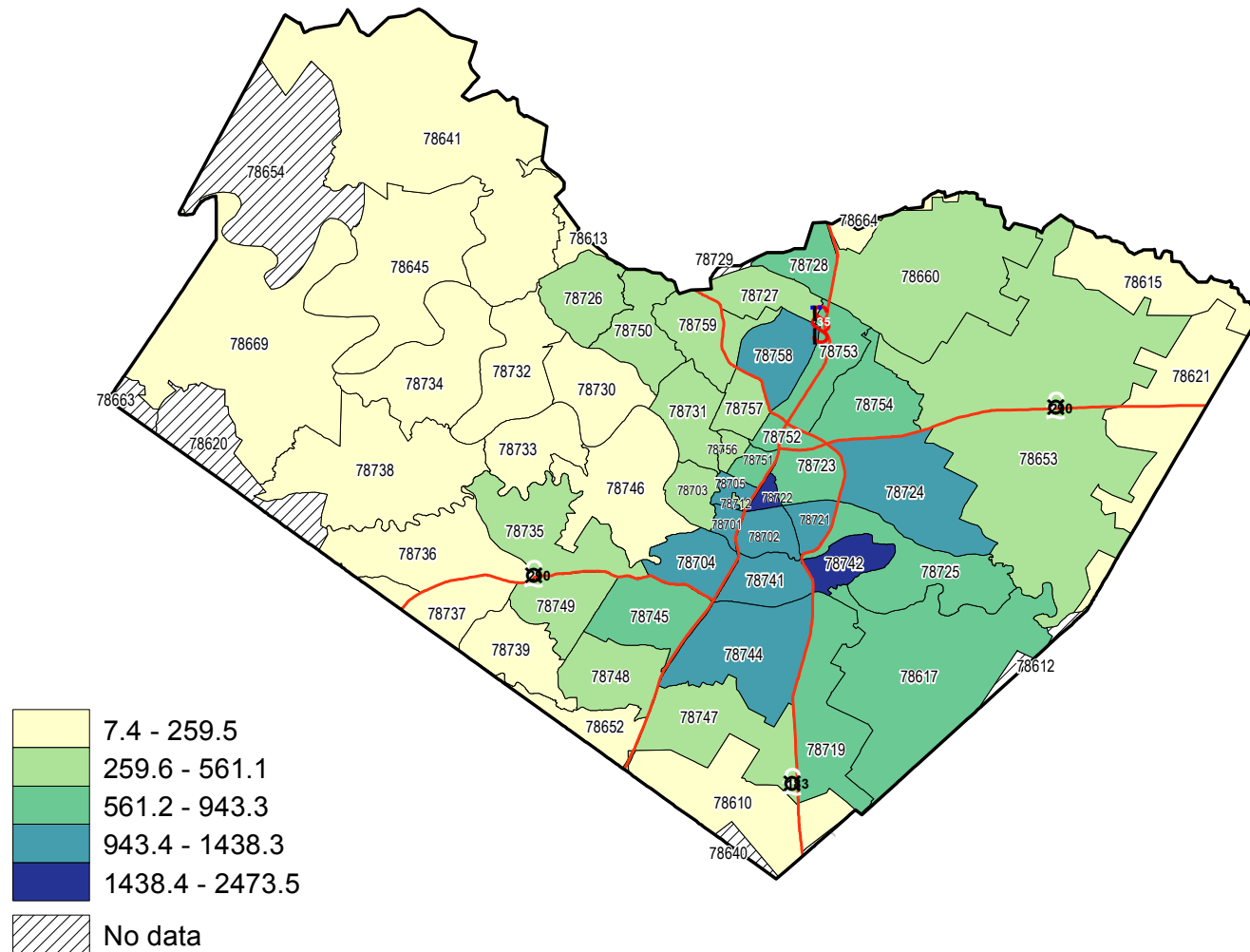
Budzynska D, West P, Savoy-Moore RT, Lindsey D, Winter M, Newby PK. A food desert in Detroit: associations with food shopping and eating behaviors, dietary intakes and obesity. *Public Health Nutr* 16:2114-23, 2013

Prevalence Rate per 100,000 Population of Persons Living with HIV by Zip Code, Travis County, 2015



Data Source: TB/HIV/STD Epidemiology and Surveillance Branch, Texas Department of State Health Services

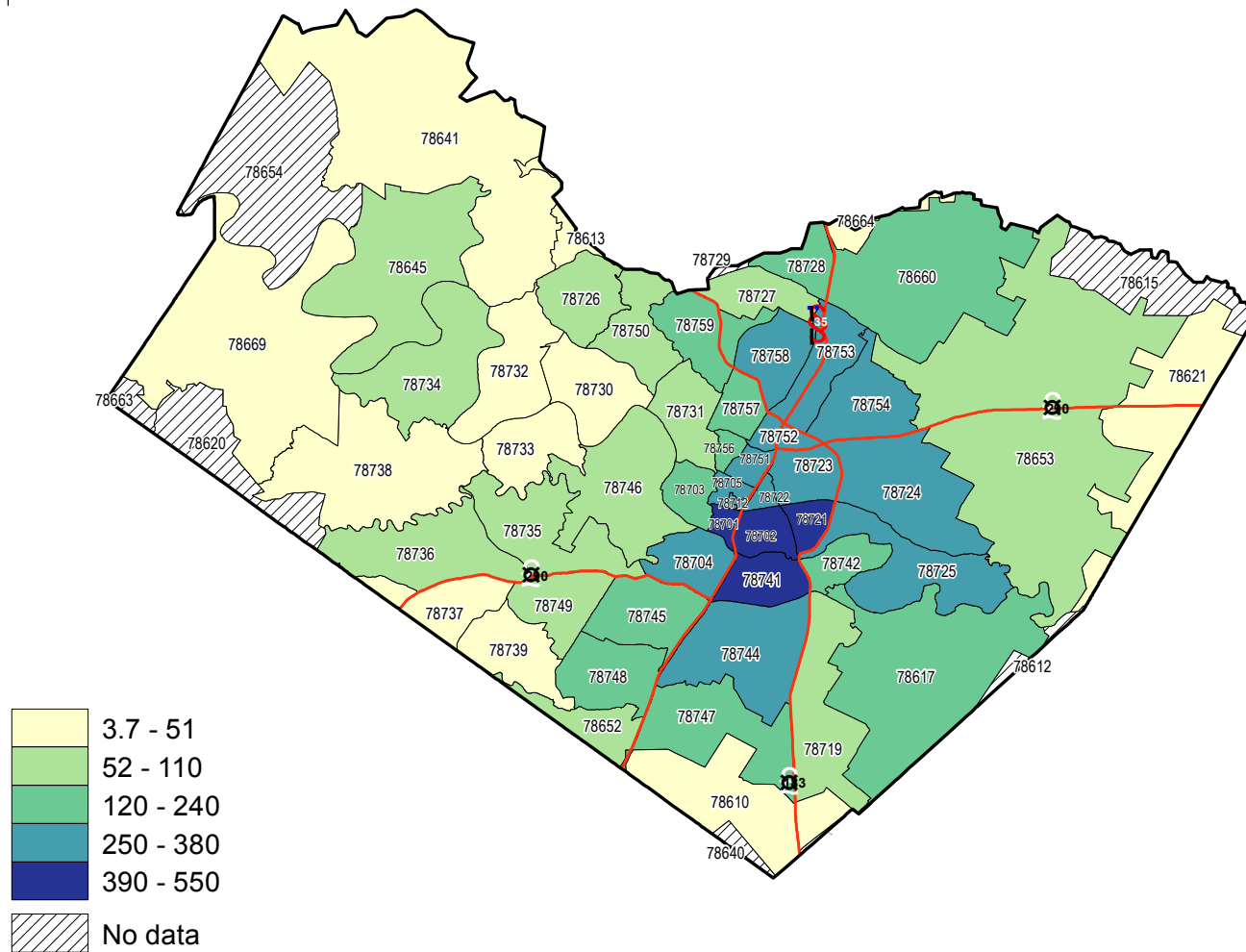
Chlamydia Incidence Rate per 100,000 Population by Zip Code, Travis County, 2015



<https://www.cdc.gov/std/chlamydia/stdfact-chlamydia.htm>

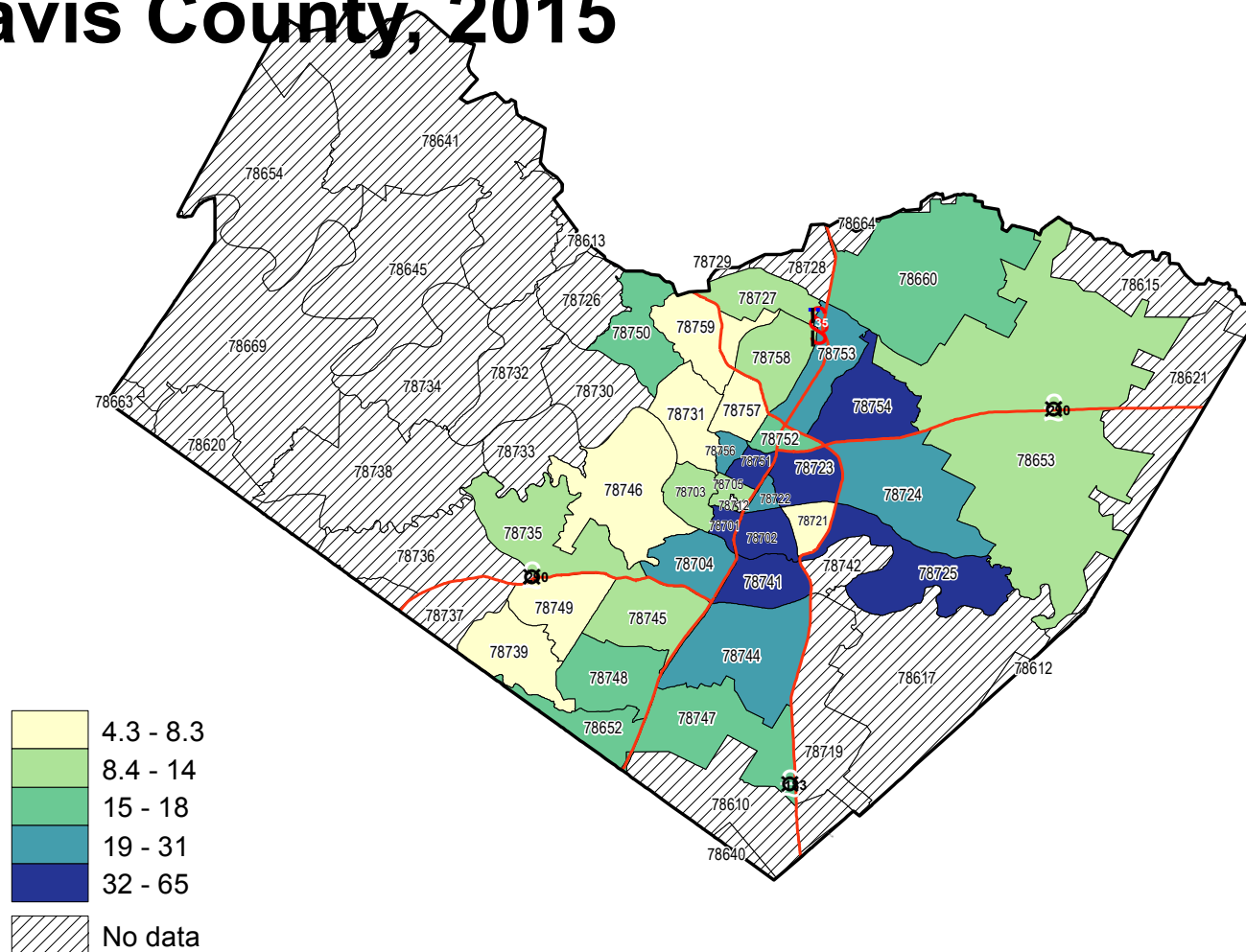
Texas STD Surveillance Report, 2015 Annual Report, Texas Department of State Health Services

Gonorrhea Incidence Rate per 100,000 Population by Zip Code, Travis County, 2015



Data Source: TB/HIV/STD Epidemiology and Surveillance Branch, Texas Department of State Health Services

Primary & Secondary Syphilis Incidence Rate per 100,000 Population by Zip Code, Travis County, 2015



Data Source: Texas Department of State Health Services, 2015 Texas STD and HIV Epidemiologic Profile

Northeast Health Clinic Partnership Findings

- Needs assessment result identified gaps in:
 - Dental Services
 - Health Education Resources (Nutrition/Cooking Classes, Exercise, etc.)
 - Career Resources (Job Fairs)
 - Sexual health screenings (HIV/STI/Reproductive Health)
 - Mental Health
 - Preventative Screenings/Services (Blood Pressure, Cholesterol, Diabetes, HIV, Vaccines etc)
 - Primary Health Care
- Resident response to: How can we help improve your life?
 - Add more parks, gyms, football field for ages 10-15
 - Ensure that the neighborhood gets a clinic/hospital
 - Immigration information session
 - Provide equitable low cost or free health services and health classes
- Resident Feedback

“I was raised in this neighborhood, so I’ve been waiting 28 years for this.
Thank you.

Northeast Health Clinic Partnership Findings

- There are currently mobile health services provided through Austin Public Health Quality of Life Initiative, and CommUnity Care
- Travel time and distance interferes with access to appropriate timely care. Providers and facilities should be geographically accessible to where patients live and work.
- Better physical accessibility to primary health care is likely to promote increased utilization of services such as childhood immunization, and may improve compliance with increasingly important chronic diseases, including HIV, that are being treated at these clinics.

Questions
