

*The removal of freeways
in cities today*

*is less a matter of
technical limitations
and more a matter of
pragmatic response,
community aspiration,
and political will.*

- PETER PARK



Who is familiar with this view?





EXIT 235A

MLK & 15th St
1/2 MILE

EXIT 235B

Manor Rd
NEXT RIGHT

EXIT 235C
Manor Rd
EXIT ONLY

EXIT 235A
MLK & 15th St

U-HAUL
ONE-WAY & IN-TOWN MOVES



I-35 in Austin is...

...one of the most congested roadways in Texas.

*\$110 million wasted annually in traffic
(and that was in 2012)*

...one of the most dangerous roadways in the City.

*17% of the 102 deaths in 2015
occurred in the I-35 corridor*

...a physical barrier between east and west Austin.

...a major contributor of air and noise pollution.

...not compatible with long-range visions for the City or UT.



560

East Avenue

Austin



DOWNTOWN
1952



DOWNTOWN
1952



DOWNTOWN
1964



DOWNTOWN
2016





COST: **\$ 2.8 billion**

SIZE: **26 lanes across**

TRAVEL TIME INCREASE: **30%**



*Orvieto,
Italy*

*Consider the
opportunities
we give up
in our cities
when we build
big highways
through them...*



*Barcelona,
Spain*





RECONNECT *AUSTIN*







STREET
PARKING
24 HOURS

Dallas 214-748-1111 Austin 512-490-1300

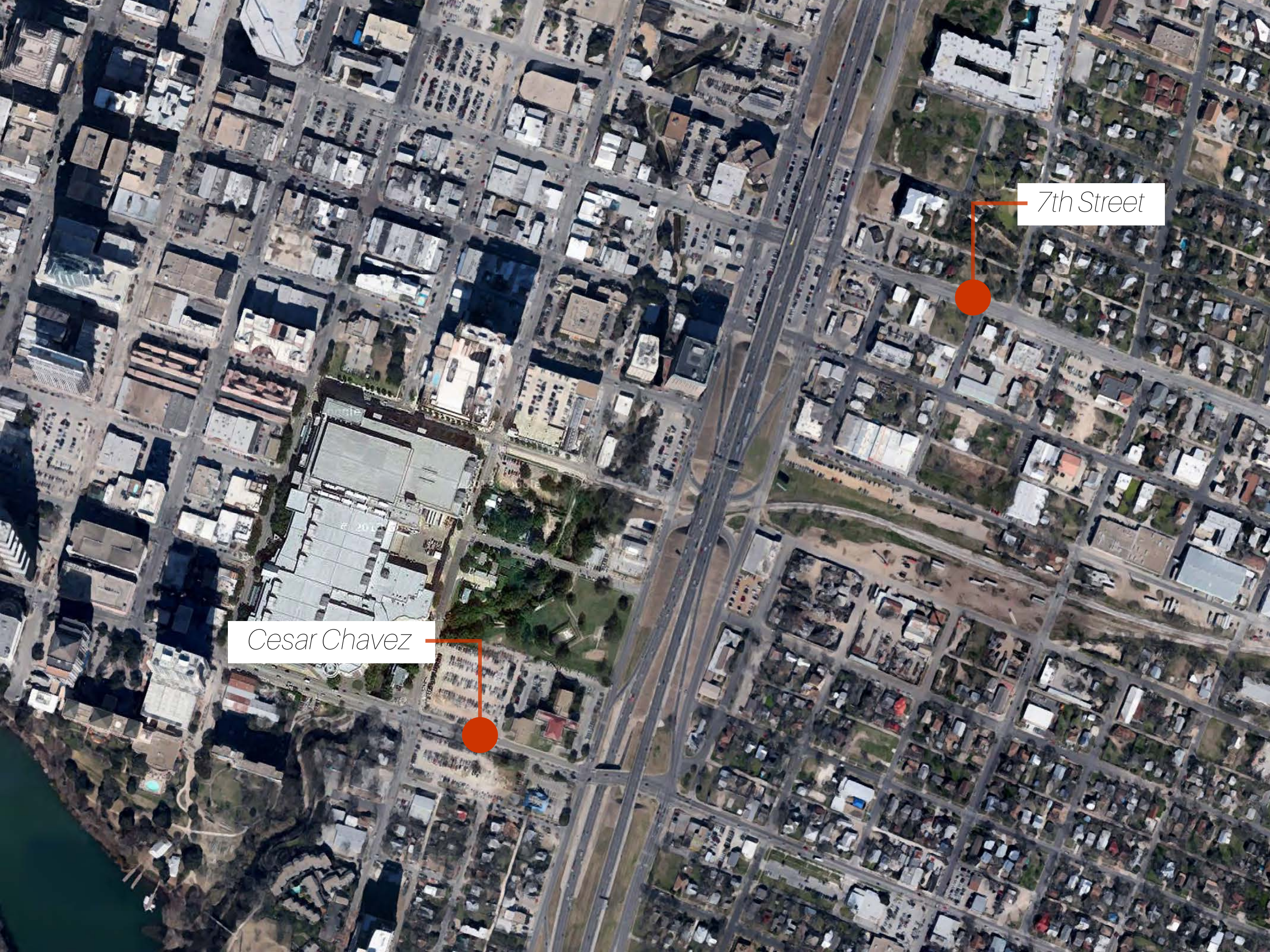
WHITE GLOVE
Storage & Delivery





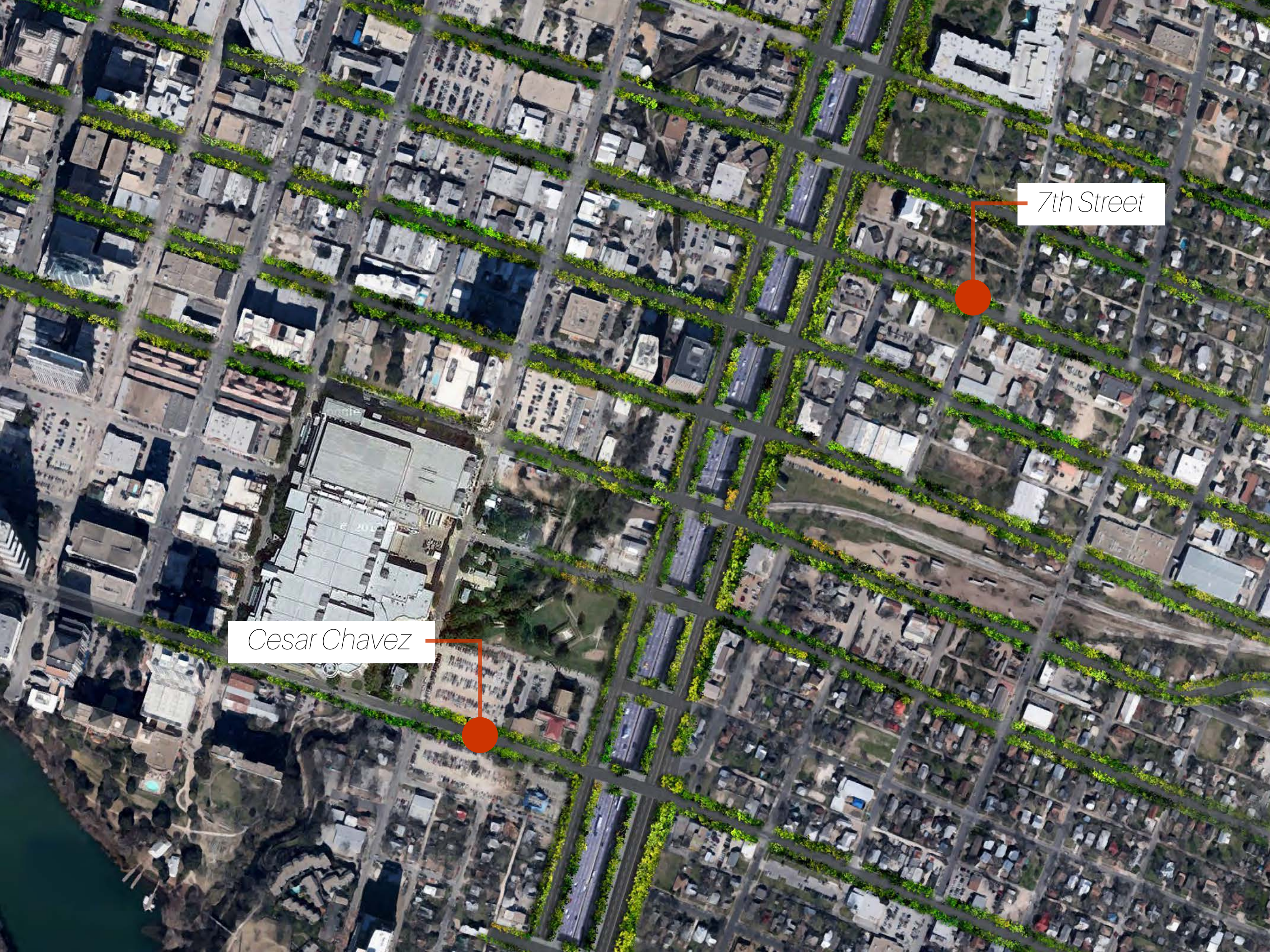






7th Street

Cesar Chavez



7th Street

Cesar Chavez





BENEFITS OF RECONNECT AUSTIN

Economic Development

Social Justice

Environmental Quality

Local Connectivity (for walking, biking)

Regional Mobility

6th Street, Looking West



Human-Scaled Connections









E. MARTIN LUTHER KING BLVD.

I-35

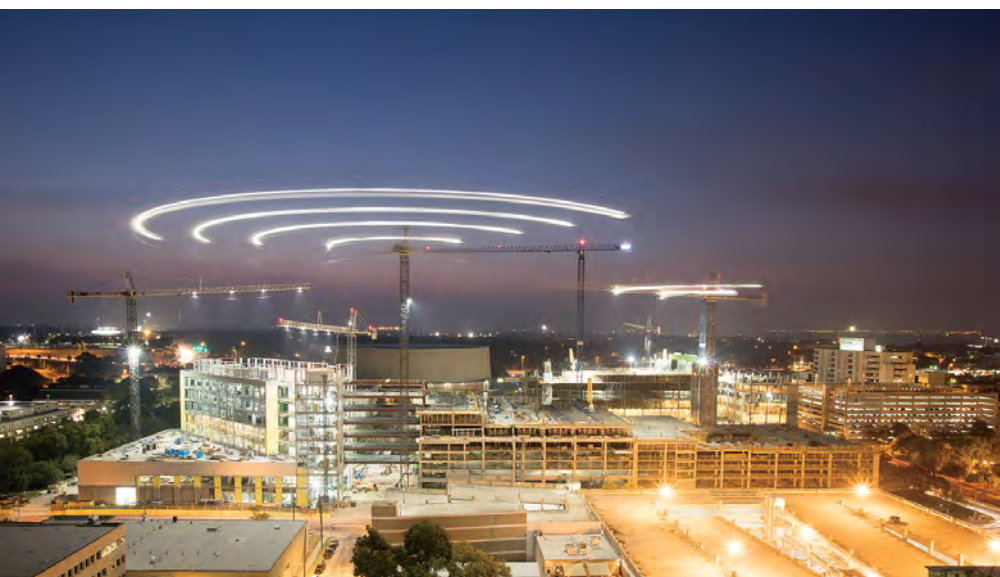
15TH STREET

SAN JACINTO BLVD

TRINITY STREET

12TH STREET

MASTER PLAN





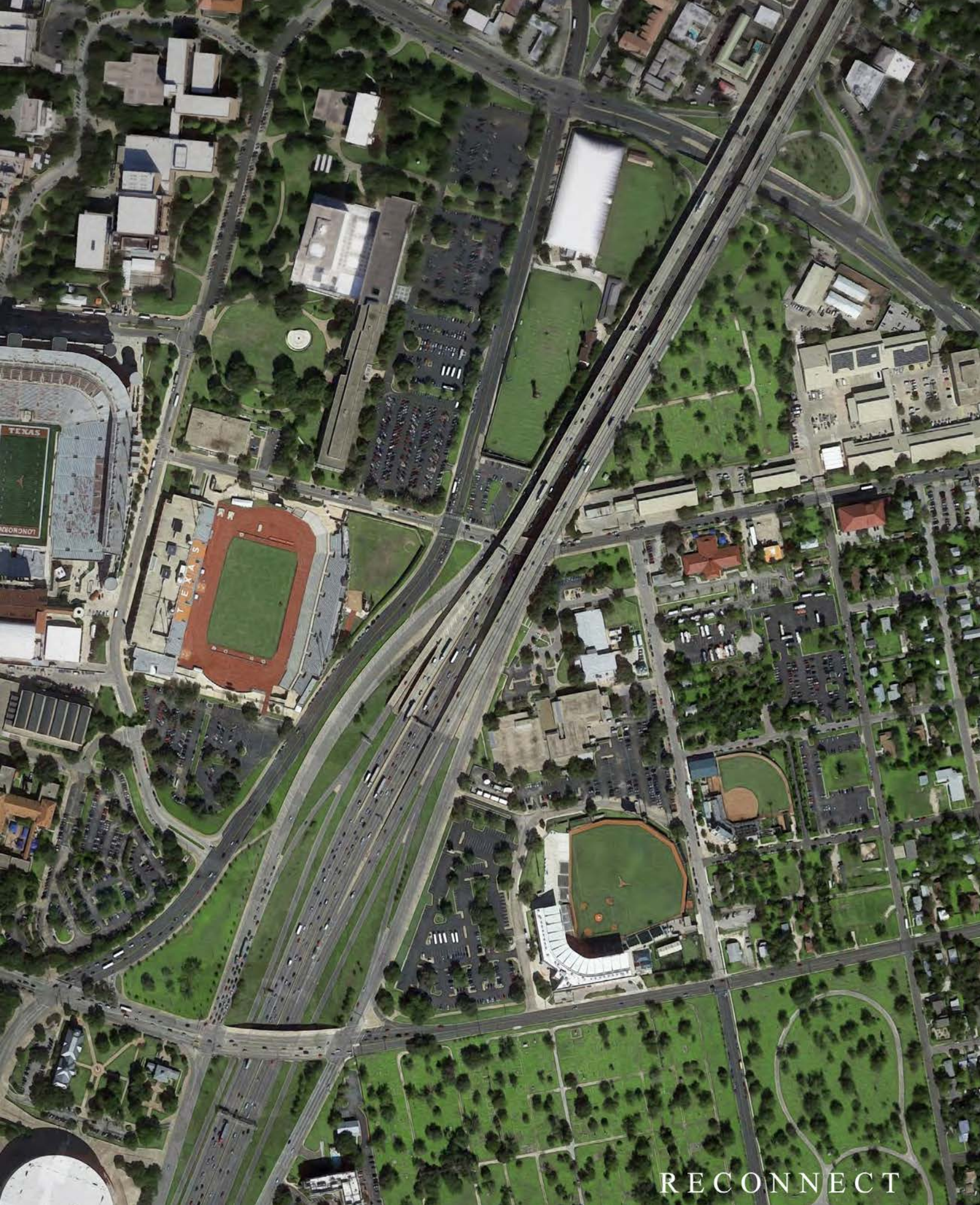
MLK Jr. Blvd

Manor Rd



MLK Jr. Blvd

Manor Rd



UT and I-35

*Existing
Conditions*

RECONNECT



UT and I-35

*The Next
40 Acres*

RECONNECT



IMPROVED
*East / West
connectivity*







NEW PARKING GARAGE

*1,000 spaces
New street access*

*Keeps parking out
of east Austin
neighborhoods*

NEW ATHLETICS ARENA

*Replaces loss of
Erwin Center*



NEW GRAD STUDENT HOUSING

*Vision informed the
plan currently being
implemented*

*Safer access for all
new development
and students east of
I-35*



TRAFFIC CIRCLES MLK AND DEAN KEETON

MLK - Before & After



*Connections for
managed lanes
below grade
improves
connectivity
for transit*



Would you enjoy walking or
biking across this to reach campus?

How about this?





An aerial photograph of a city area, likely a university campus or a planned community, showing a mix of green spaces, buildings, and infrastructure. A large, circular green field is prominent in the center, surrounded by various buildings and parking lots. A road with a roundabout is visible in the upper right, and another roundabout is in the lower left. The overall scene suggests a well-planned, green environment.

**Community
aspiration and
political will**
*turns productive
vision into a
reality.*

RECONNECT





UNA SILLA
VACIA DURA
AÑOS.
UN VOTO
EN BLANCO
1 DÍA

P
↑

OPENING