



November 2, 2015

Mr. Greg Smith
President and CEO
Austin Revitalization Authority
Austin, Texas

RE: Proposed East Austin Capitol View Corridors.

Dear Mr. Smith:

Field survey work for this project was conducted on October 22nd and 23rd, 2015. We gathered the field data for the five pair of origin or beginning points for the proposed Capitol View Corridors.

- 1) The first view corridor is the Rosewood Park Corridor at 900 Thompson Street. The two beginning points for this corridor are on opposite sides of Thompson Street on outside edges of the concrete sidewalks.
- 2) The second view corridor is the Lott Park Corridor. Both beginning points are in the basketball court, one is under the net and the other is at the free throw line.
- 3) The third view corridor is the Juniper Street Corridor. One of the beginning points is at the southwest corner of the intersection of Juniper St. and Lydia St. The other beginning point is at the southwest corner of the intersection of Juniper St. and Navasota St.
- 4) The fourth view corridor is the Texas State Cemetery Corridor. Both of the beginning points are on a concrete path on a hill inside the cemetery grounds.
- 5) The fifth view corridor is the Houston-Tillotson University Corridor. Both beginning points are along the western edge of the western colonnade of the Jackson Moody Building up the hill adjacent to the athletic field.

Survey data was collected with Leica Global Navigation Satellite System (GNSS) receivers utilizing the Leica SmartNet service. Redundant GNSS data was collected on each of the beginning points during separate sessions. Ties to monuments in the City of Austin survey control network were also made. The data was reviewed and processed in our office with the Leica office software. The position for each of the beginning points is reported in Texas Coordinate System, Central Zone, North American Datum (NAD) 1983 coordinates; elevations are based on the NAVD 1988 datum using the Geoid Model 12A. The position of the Texas State Capitol Building dome is based upon the NAD 1983 coordinates published by the National Geodetic Survey. Bearings, distances and elevations for the proposed view corridors were computed using the published position of the Capitol dome and the position of the beginning points based upon our survey data. The width of the corridor at the beginning points is a rounded distance measured perpendicular to the corridor line from the opposite beginning point.

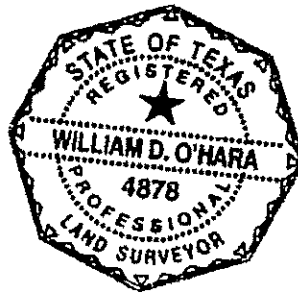
The elevations are rounded to the nearest one-half foot at the ground and then raised either 4.5-ft or 5.0-ft to be an even number at a height suitable for most people to view the Capitol from. The appropriate data has been inserted into the draft "Central East Austin Capitol View Corridor Resolution" and made a part of this report. Other attachments include a point list and description, a graphic presentation of the beginning points, and a copy of our field book pages.

This may well require additional explanation. Please do not hesitate to contact me by phone or email if I can be of further assistance.

I hereby certify the survey data collected for this project and presented herein, and in the five (5) attachments, is true and correct to the best of my knowledge.



William D. O'Hara
Registered Professional Land Surveyor No. 4878
State of Texas



Enclosures:

- Draft of the "Central East Austin Capitol View Corridor Resolution" with inserted data for the proposed corridor limits.
- Data sheet showing the point numbers, coordinates, elevation, and description for points collected with GNSS and the points calculated.
- Sketches of the beginning point pairs and the termination points at the Capitol.
- An overall sketch showing the positional relationship of the beginning point pairs and the calculated corridor boundaries.
- Copy of seven pages of the field book used for this project.
- Copy of six pictures taken from three beginning point pairs of the proposed view corridors.



View looking west toward Capitol from 1st beginning point for the Rosewood Park Corridor. Picture taken in the morning 10-22-2015. Cloudy day. Capitol building barely visible over the right corner of the yellow building in the foreground.

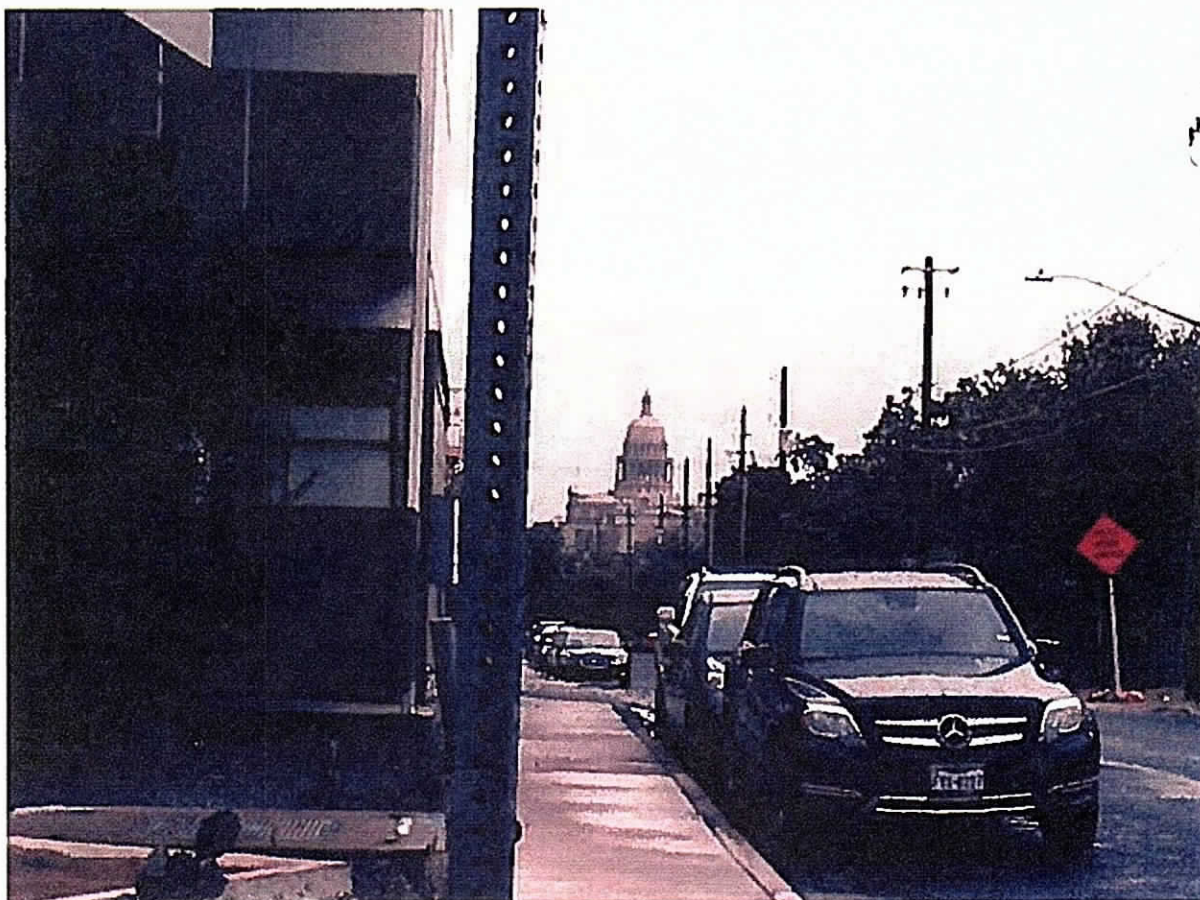


View looking west toward Capitol from 2nd beginning point for the Rosewood Park Corridor. Picture taken in the morning of 10-22-2015.



View of the Capitol building from the 1st beginning point of the Juniper St. Corridor.

Picture taken 10-22-2015.



View of the Capitol building from the 2nd beginning point of the Juniper St. Corridor.

Picture taken 10-22-2015.



View of the Capitol building from the 2nd beginning point of the Lott Park Corridor. This point is under the hoop on the basketball court. Picture taken 10-22-2015.



View of the Capitol building from the 1st beginning point of the Lott Park Corridor. This point is at the free throw line on the basketball court. Picture taken 10-22-2015.

Central East Austin Capitol View Corridor Resolution

WHEREAS, The Capitol of the State of Texas is the paramount symbol of Texas history and a preeminent landmark that embodies Austin's image as the seat of government of the State of Texas; and

WHEREAS, its high visibility serves to foster a sense of place for Austinites; and

WHEREAS, at the behest of citizens concerned about permissive development occluding public views of the Capitol, the City of Austin undertook a Capitol View Preservation Study (Preservation Study) in 1983 and designated a first phase of Capitol view corridors for priority protection under State Legislation; and

WHEREAS, the Preservation Study's priority list ultimately included two threshold glimpses of the Capitol emanating along the eastern edge of Interstate Highway 35 but no framed or sustained views within the historically African-American core of central east Austin; and

WHEREAS, beginning in 1875, emancipated African-American slaves purchased land from the Joseph W. and George L. Robertson family and settled the area between East Avenue, East 10th Street, East 12th Street and Waller Street, creating a tight-knit Freedmen's community known as Robertson Hill that thrived alongside communities of European immigrants and expanded north, south and east under Segregation, Redlining and three Urban Renewal efforts; and

WHEREAS, that expanded area is the heart of central east Austin and the African American Cultural Heritage District, and includes historically and civically important sites and streets that attract tourists and enhance the residential neighborhoods of which they are a part; and

WHEREAS, many of these sites afford dramatic, framing and sustained views of the Capitol from public spaces; and

WHEREAS, view corridors preserving these public views will not unreasonably diminish the development potential of the properties therein, and

WHEREAS, the Preservation Study invited neighborhood groups to "supplement view preservation efforts by suggesting neighborhood vantage points for future protection;" and

WHEREAS, the Organization of Central East Austin Neighborhoods and its member neighborhood associations support the creation of additional Capitol View Corridors to reaffirm and preserve central east Austin's sense of connection to and inclusion within the greater city that surrounds our State Capitol;

THEREFORE BE IT RESOLVED:

The Austin City Council establishes the following Capital View Corridors.

1. Rosewood Park Corridor at 900 Thompson Street.

Sweeping view of City skyline, Capitol Dome and UT Tower from pedestrian and driving vantage points west of the City of Austin Housing Authority's Book T. Washington Terraces. View overlooks the tree canopy of Rosewood Park, the first public park open to African Americans in the City of Austin (1929), the Millennium Youth Entertainment Center, the Houston-Tillotson running track, Austin Can Academy and the East Austin Boys & Girls Club.

Width at origin: **50'**

Elevation: **531.5' (ground) / 536' (up 4.5')**

10,000' [1.89 Miles] (average) from Capitol

2. Lott Park Corridor---from the basketball court of City of Austin Lott Park, bordered by Catalpa, Curve and Olive Streets.

Dramatic view of Capitol dome framed by trees. This public park is the former site of the first public school open to African-American children. Anderson High School was located there from 1905-15, and Olive Street School from 1915-1947.

Width at origin: **15'**

Elevation **520.5' (ground) / 525' (up 4.5')**

3,420' [.65 Miles] (average) from Capitol

3. Juniper Street Corridor— 1100 block of Juniper Street from Navasota to Lydia to Waller Street.

Sustained approach affords pedestrians and drivers axial views of the Capitol Dome. Very dramatic views at sunset.

Width at origin: **10'**

Elevation **537' (ground) / 542' (up 5')**

4,570' [.87 Miles] (average) from Capitol

4. The Texas State Cemetery Hill Corridor—from walking path atop the northeast hill.

Pedestrian stationary view of Capitol Dome with Texas State Flag in foreground.

Width at origin: **6'**

Elevation **543.5' (ground) / 548' (up 4.5')**

5,560' [1.05 Miles] from Capitol

5. Huston-Tillotson University Corridor—North 100' of the western colonnade of the Jackson Moody Building.

Sweeping views of the city skyline with Capitol Dome and Our Lady Guadalupe Church in foreground.

Width at origin: **95'**

Elevation **528' (ground) / 533' (up 5')**

6705' [1.27 Miles] (average) from Capitol

(1) the Rosewood Park Corridor, which encompasses all of the area between two lines:

(A) one of which begins at an elevation of **536** feet above sea level at Texas Plane Coordinate X-**3124935.14**, Y-**10071894.51**, and extends along a bearing of **N 83° 12' 41.0" W** for a **grid** distance of **9985.25** feet to a point 100 feet from the center of the Capitol dome, this point being located at Texas Plane Coordinate X-**3115019.90**, Y-**10073074.83**; and

(B) the second of which begins at an elevation of **536** feet above sea level at Texas Plane Coordinate X-**3124971.10**, Y-**10071938.59**, and extends along a bearing of **N 82° 20' 31.4" W** for a **grid** distance of **10015.38** feet to a point 100 feet from the center of the Capitol dome, this point being located at Texas Plane Coordinate X-**3115045.05**, Y-**10073273.23**.

(2) the Lott Park Corridor, which encompasses all of the area between two lines:

(A) one of which begins at an elevation of **525** feet above sea level at Texas Plane Coordinate X-**3118224.80**, Y-**10071960.53**, and extends along a bearing of **N 70° 52' 01.7" W** for a **grid** distance of **3414.46** feet to a point 100 feet from the center of the Capitol dome, this point being located at Texas Plane Coordinate X-**3114998.95**, Y-**10073079.65**; and

(B) the second of which begins at an elevation of **525** feet above sea level at Texas Plane Coordinate X-**3118237.69**, Y-**10071972.34**, and extends along a bearing of **N 67° 46' 38.8" W** for a **grid** distance of **3422.35** feet to a point 100 feet from the center of the Capitol dome, this point being located at Texas Plane Coordinate X-**3115069.54**, Y-**10073266.69**.

(3) the Juniper Street Corridor, which encompasses all of the area between two lines:

(A) one of which begins at an elevation of **542** feet above sea level at Texas Plane Coordinate X-**3119138.95**, Y-**10071296.72**, and extends along a bearing of **N 66° 42' 13.5" W** for a **grid** distance of **4514.86** feet to a point 100 feet from the center of the Capitol dome, this point being located at Texas Plane Coordinate X-**3114992.18**, Y-**10073082.28**; and

(B) the second of which begins at an elevation of **542** feet above sea level at Texas Plane Coordinate X-**3119245.65**, Y-**10071254.87**, and extends along a bearing of **N 64° 16' 31.7" W** for a **grid** distance of **4629.33** feet to a point 100 feet from the center of the Capitol dome, this point being located at Texas Plane Coordinate X-**3115075.13**, Y-**10073264.21**.

(4) the Texas State Cemetery Hill Corridor, which encompasses all of the area between two lines:

(A) one of which begins at an elevation of **548** feet above sea level at Texas Plane Coordinate X-**3119858.47**, Y-**10070414.77**, and extends along a bearing of **N 61° 16' 29.2" W** for a **grid** distance of **5558.91** feet to a point 100 feet from the center of the Capitol dome, this point being located at Texas Plane Coordinate X-**3114983.66**, Y-**10073086.44**; and

(B) the second of which begins at an elevation of **548** feet above sea level at Texas Plane Coordinate X-**3119860.88**, Y-**10070420.39**, and extends along a bearing of **N 59° 16' 34.3" W** for a **grid** distance of **5558.22** feet to a point 100 feet from the center of the Capitol dome, this point being located at Texas Plane Coordinate X-**3115082.81**, Y-**10073260.08**.

(5) the Huston-Tillotson University Corridor, which encompasses all of the area between two lines:

(A) one of which begins at an elevation of **533** feet above sea level at Texas Plane Coordinate X-**3120573.74**, Y-**10069381.51**, and extends along a bearing of **N 56° 28' 04.2" W** for a **grid** distance of **6714.75** feet to a point 100 feet from the center of the Capitol dome, this point being located at Texas Plane Coordinate X-**3114976.49**, Y-**10073090.77**; and

(B) the second of which begins at an elevation of **533** feet above sea level at Texas Plane Coordinate X-**3120607.53**, Y-**10069471.48**, and extends along a bearing of **N 55° 33' 27.6" W** for a **grid** distance of **6692.48** feet to a point 100 feet from the center of the Capitol dome, this point being located at Texas Plane Coordinate X-**3115088.28**, Y-**10073256.59**.

References:

(1) TEXAS PLANE COORDINATE means the Texas Coordinate System, Central Zone, NAD83, Grid, as defined by the National Geodetic Survey (NGS).

(2) CAPITOL DOME means the part of the State Capitol located more than 653 feet above sea level, with the center of the dome at Texas Plane Coordinate X-3115031.72, Y-10073174.13, computed from the NAD83(1993) position and adjusted by the NGS in

July 1998, according to the NGS Data Sheet for PID – BM0900, with Designation – AUSTIN CAP DOME LIBERTY BASE.

Report Points

Point	Northing-(Y)	Easting-(X)	Elevation-(Z)	Description
1	10073174.12	3115031.72	653.00	CENTER CAPITOL DOME NGS-NAD83
150	10071894.51	3124935.14	531.49	P1A:EC-S/W-EJ(102215)
151	10071938.59	3124971.10	531.44	P1B:60D SET(102215)
152	10073074.83	3115019.90	653.00	P1A:CAPITOL DOME
153	10073273.23	3115045.05	653.00	P1B:CAPITOL DOME
154	10071296.72	3119138.95	536.78	P3A:MAGNAIL FND-CONC-S/W(102215)
155	10071254.87	3119245.65	537.32	P3B:EC-S/W-PI(102215)
156	10073082.28	3114992.18	653.00	P3A:CAPITOL DOME
157	10073264.21	3115075.13	653.00	P3B:CAPITOL DOME
158	10071960.53	3118224.80	520.50	P2A:BBALL-FOULLINE-EJ(102215)
159	10071972.34	3118237.69	520.27	P2B:BBALL-BASELINE-EJ(102215)
160	10073079.65	3114998.95	653.00	P2A:CAPITOL DOME
161	10073266.69	3115069.54	653.00	P2B:CAPITOL DOME
162	10069381.51	3120573.74	527.90	P5A:EC-S/W-PI
163	10069549.65	3120636.89	528.02	P5B:REF:83.5' O/S-EC-S/W-POL(102215)
164	10069471.48	3120607.53	527.97	P5B:CALC:EC-S/W-PI(102215)
165	10073090.77	3114976.49	653.00	P5A:CAPITOL DOME
166	10073256.59	3115088.28	653.00	P5B:CAPITOL DOME
167	10070414.77	3119858.47	543.61	P4A:EC-S/W-POL(102215)
168	10070420.39	3119860.88	543.22	P4B:EC-S/W-POL(102215)
169	10073086.44	3114983.66	653.00	P4A:CAPITOL DOME
170	10073260.08	3115082.81	653.00	P4B:CAPITOL DOME

P1B: N $82^{\circ}20'31.4''$ W
10015.38'

48.48'

151
P1B:60D SET(102215)
531.44

P1A: N $83^{\circ}12'41.0''$ W
9985.25'

150
P1A:EC-S/W-EJ(102215)
531.49

Rosewood Park

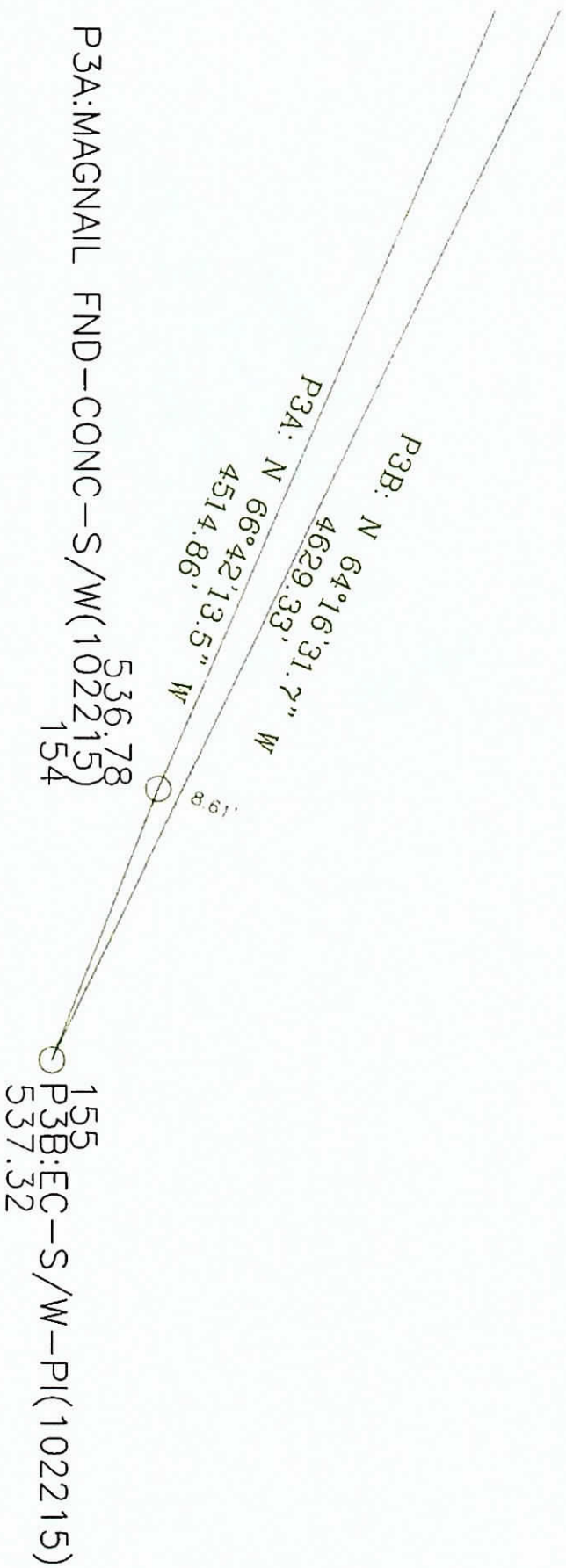
P2B: N 67°46'38.8" W
3422.35'

P2A: N 70°52'01.7" W
3414.46'

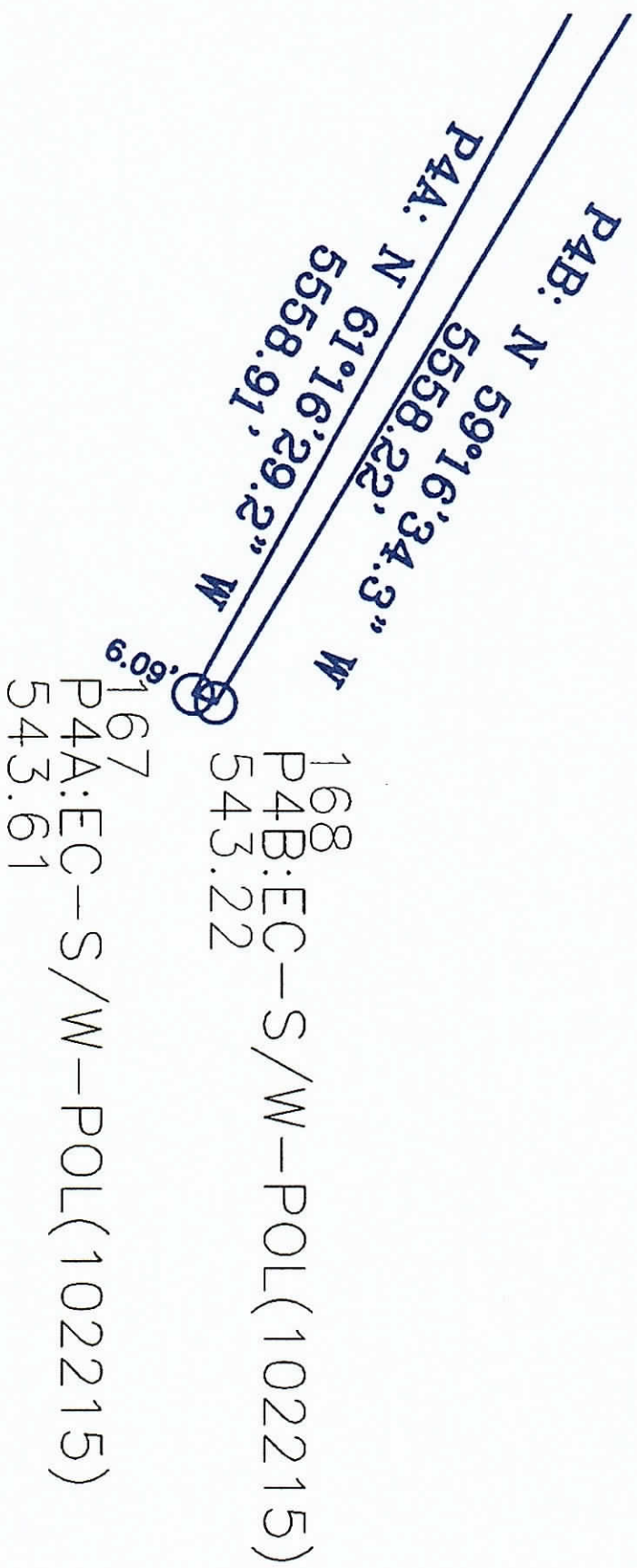
158
P2B:BBALL-BASELINE-EJ(102215)
520.27

158
P2A:BBALL-FOULLINE-EJ(102215)
520.50

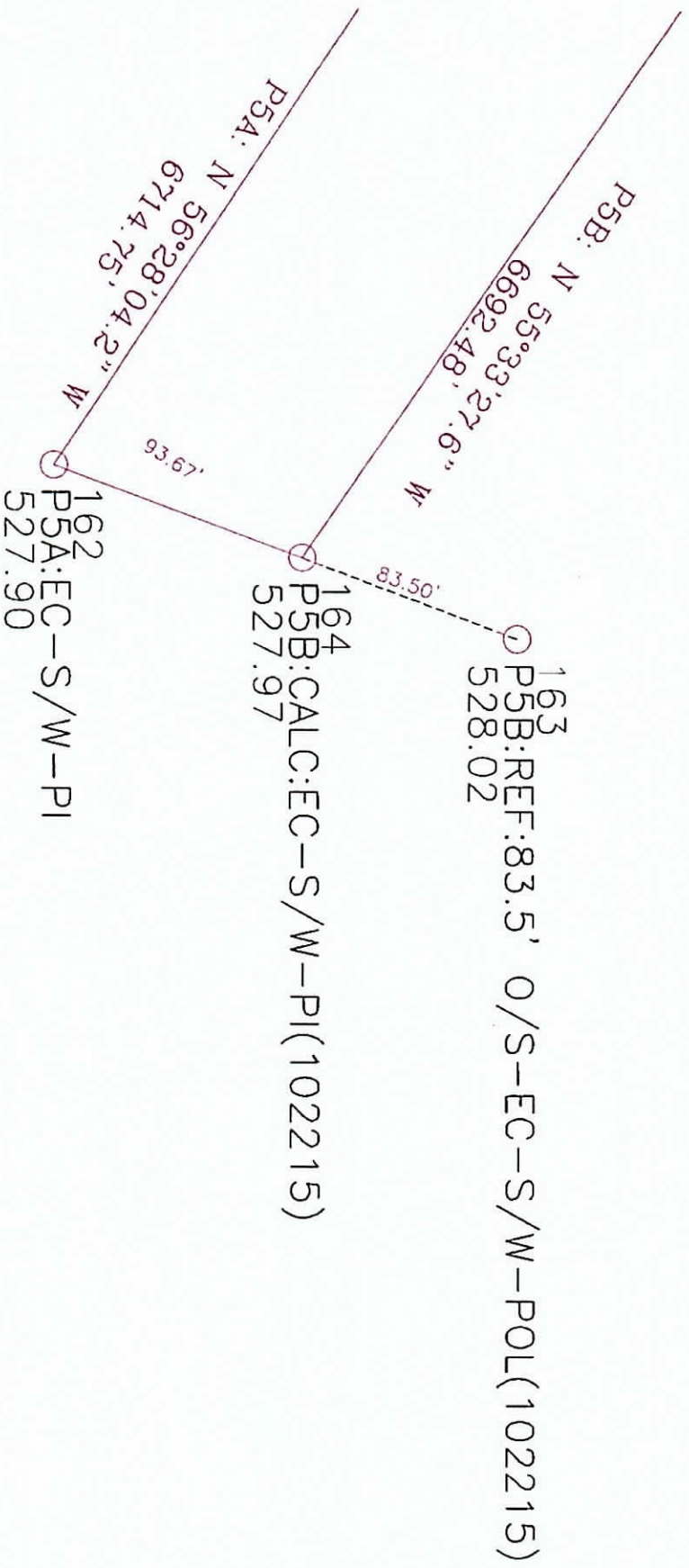
Loft Park



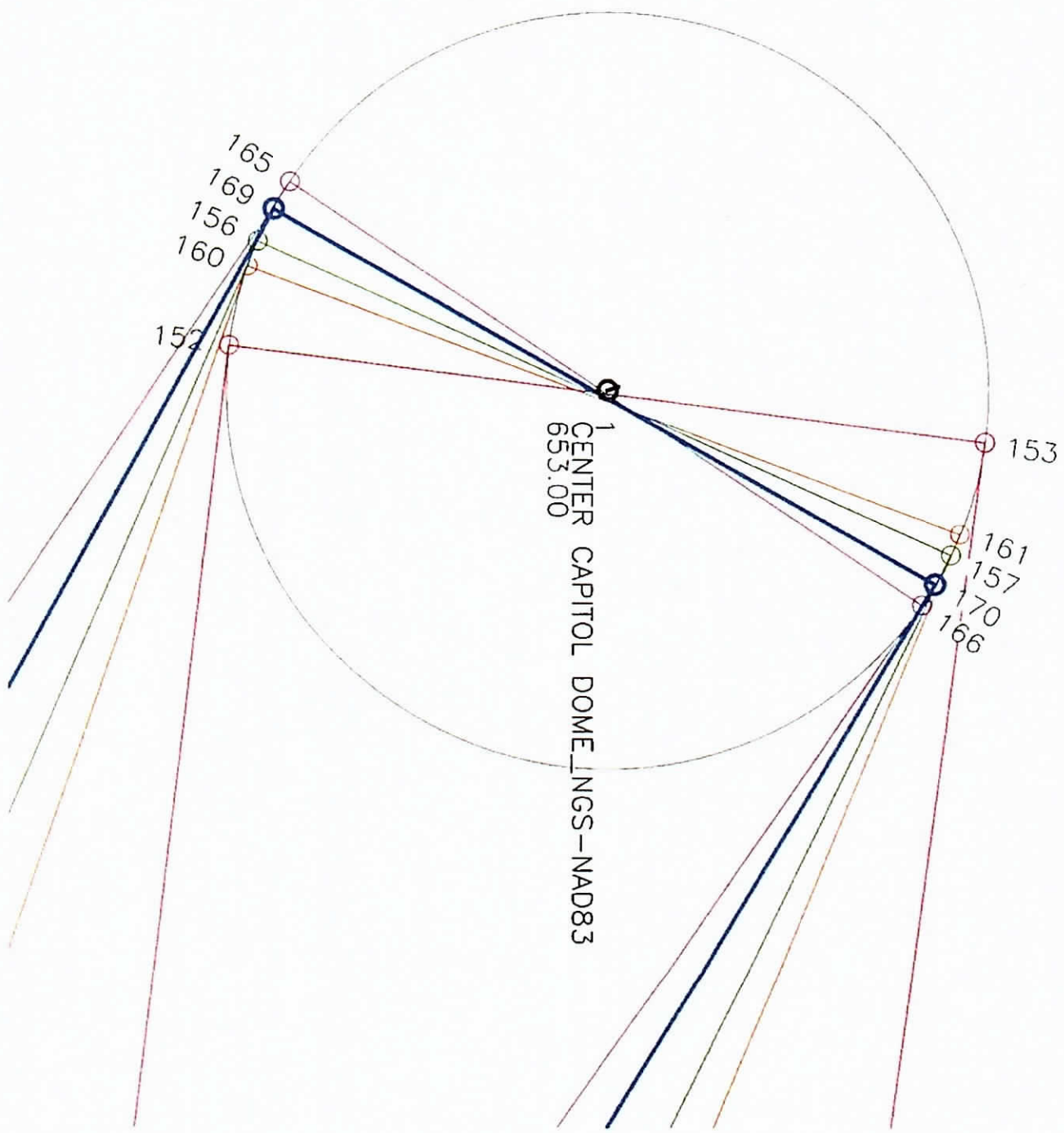
Juniper St.



Texas State Cemetery



Huston - Tillotson University



3rd Aust Cap 101

View from road

Mission + establish contact
also at point of entry point
of the location for
proposed protection in view
of the road

10-22-2015

cloudy, drizzle

Bod humid

Bill D'lane
Rene Eulie

Left GPS base on a new point
behind Bours + fields. Clouds
at Bod Thompson left in

FE Austin

File: CAPTAIN V2

I = 1211 meter 4.100'

10.00 1.181'

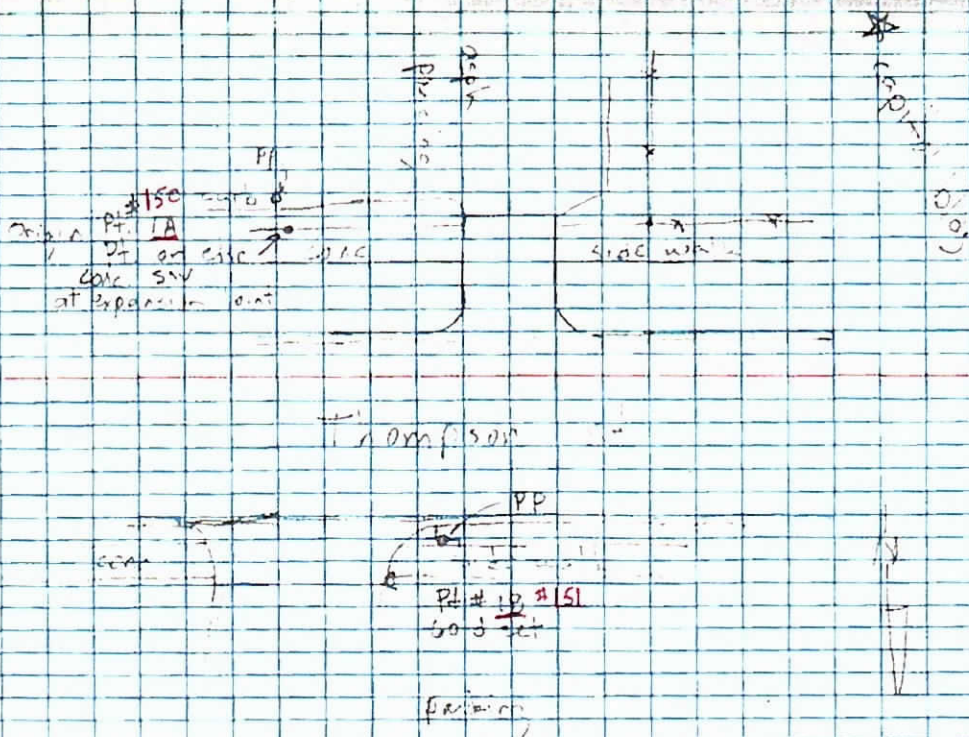
Start stream road 12.100 km

we 1 not again PT. 4 2A, 3A + 3B
W. back up signal on still has
now to signal 12

30/380

Shot 1A + 1B twice
from base sta.

1. Rosewood Park Corridor



31/380

32/300

4410 St.

1540

Deig Pt. 2A

Mag. 1000 in

Cont. 100

(Empt 100)

Deig. 100 ft

3B

155

Mag. 1000 in

N

3. Juniper Street Collier

10-2 0

33/380

* Capitol Bldg

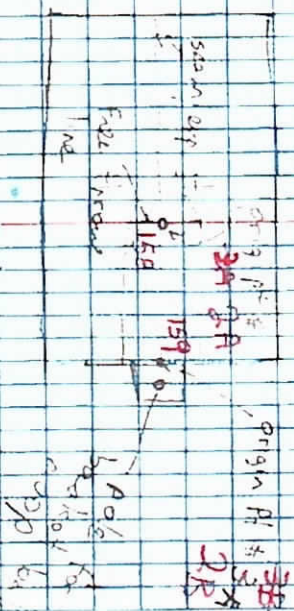
Olive St.

10th Public
Education Center

N

Curry St

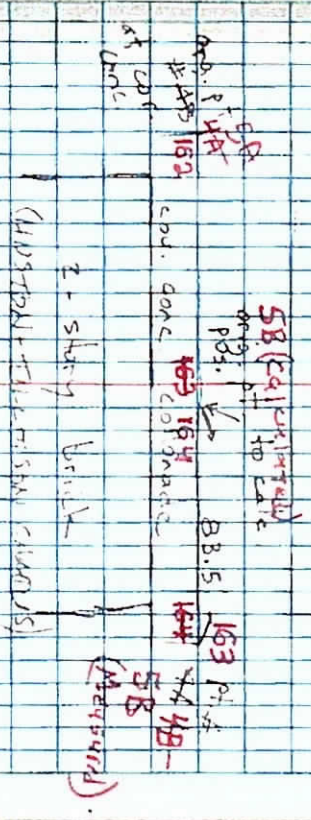
2nd Lot Park Corridor



Capitol Hill

Chalmers St

Athletic Field



5. Houston-Tillman University
Corridor

Texas State Cemetery site

find two points on each of
conc. ~~set~~ walls when near top
of hill East side of concave
fits about 6-8 ft apart

10-21-15

35/380

Capitol Hill

A

dark trace on
top of hill

4A

orig. pit in SA

ridge of conc

4B

4C

4D

4E

4F

4G

4H

4I

4J

4K

4L

4M

4N

4O

4P

4Q

4R

4S

4T

4U

4V

4W

4X

4Y

4Z

4. Texas State Cemetery Col. Mc

Concho St.

10-21-15

36/382

field - C.P. A control, near 14-22-1003
in dense side with an East side
of Navasota at Olive St.

FILE: CAPVIEW V2

PG 3090

LEICA GPS SET-UP PAGE (SUMMARY)

FILE: CAPVIEW V2

10/23/15

BASE: ROCKWELL ST. 2292

B. O'HARA

CHECK SHOTS: 3A & 3B (IN LOT PARK)

B. O'HARA
J. DELACROIX

K-22-1003 (C.O.A. MON; 41' EARS)

DISC IN SIDEWALK @ INT. OF

NAVASTA ST. & DRIVE ST., 2A (CORNER

OF LYDIA ST & SUMMER ST.), 2B (CORNER

OF SUMMER ST. & NAVASTA ST.) 5A &

5B (STATE CEMENTARY) 4A & 4B

(HUSTON-TILLOTSON GARAGE), PT.#7

(EARS & GILLS CLUBS OF HUSTON) 5A &

5B (THOMPSON ST. ACACIA BOTS & GILLS

CLUBS), PT.#6 (ALLEY BEHIND TEXAS

STATE THEATERS ASSN.) PT.#8 (TOP

PARKING GARAGE @ 12TH & LAVERA)

PT.#7C184 (E. SIDE OF INT. N=12TH ST.

& LAVERA ST.), PT.#3 (S.W. CORNER OF

INTERSECTION OF 19TH ST. & GUADALUPE ST.)

PT.#7C183 (IN B.O.C. OF MEDIAN & WEST

SIDE OF INT. OF 19TH ST. & GUADALUPE ST.)

PT.#K-22-1004 PT.#K-22-1001 (INT. OF

THOMPSON, HARRIS AVE & 12th-1000)

E. AUSTIN CAPITAL VIEW
CORRIDORS

37/380

10/23/15

B. O'HARA

B. O'HARA

J. DELACROIX