



DESIGN COMMISSION
MONDAY, MAY 22, 2017 AT 6:00 PM
AUSTIN CITY HALL, BOARDS AND COMMISSIONS ROOM 1101
301 W. SECOND STREET, AUSTIN, TEXAS 78701

Commission Members

_____ David Carroll, Chair (District 1)
_____ Bart Whatley, Vice-Chair (District 9)

_____ Aan Coleman (District 8)
_____ Beau Frail (District 6)
_____ Samuel Franco (District 3)
_____ Martha Gonzalez (District 2)
_____ Katie Halloran (District 7)
_____ Melissa Henao-Robledo (District 5)
_____ Conor Kenny (District 4)
_____ Evan Taniguchi (Mayor)
_____ Vacant (District 10)

City of Austin Planning & Zoning Staff

_____ Katie Mulholland, Executive Liaison
_____ Nichole Koerth, Staff Liaison

AGENDA

Please note: Posted times are for time-keeping purposes only. The Commission may take any item(s) out of order and no express guarantee is given that any item(s) will be taken in order or at the time posted.

	Approx. time
CALL TO ORDER AND ROLL CALL	6:00 PM
1. CITIZEN COMMUNICATION: GENERAL a. The first five speakers signed up prior to the meeting being called to order will each be allowed a three-minute allotment to address their concerns regarding items not posted on the agenda.	6:00 PM
2. MEETING MINUTES a. Discussion and possible action on the April 24, 2017 meeting minutes;	6:15 PM
3. NEW BUSINESS (Discussion and Possible Action): a. Discussion and possible action on the Marriott at Cesar Chavez design development submittal, located at 304 East Cesar Chavez Street, seeking review for substantial compliance with the Urban Design Guidelines for Austin in accordance with the Gatekeeper requirements of LDC 25-2-586 for the Downtown Density Bonus Program (Richard T. Suttle, Jr. , Armbrust & Brown, PLLC) b. Discussion and possible action on the Agent of Change/Entertainment License proposal seeking a recommendation of support to City Council (Alex Lopez , Deputy Director, COA Economic Development Department).	6:30 PM

4. OLD BUSINESS (Discussion and Possible Action): <ul style="list-style-type: none"> a. Discussion and possible action on the 4th Street Skybridge project connecting the Austin Convention Center and the Hilton Hotel, located at 400 ½ Neches St., seeking a recommendation in support of the project to Planning Commission (Nikelle Meade, Partner, Husch Blackwell LLP) b. Discussion and possible action on the 405 Colorado design development submittal, located at 405 Colorado St., seeking review for substantial compliance with the Urban Design Guidelines for Austin in accordance with the Gatekeeper requirements of LDC 25-2-586 for the Downtown Density Bonus Program (Michele Haussmann, Principal, Land Use Solutions) c. Discussion and possible action on Election of Officers d. Discussion and possible action on the new draft code and map from CodeNEXT (Chair Carroll) e. Discussion and possible action on the Infrastructure Design Guidelines as directed by City Council Resolution No. 20120816-060 including discussion of New York City guidelines (Chair Carroll) 	7:15 PM
5. COMMITTEE AND LIAISON REPORTS (Discussion and Possible Action): <ul style="list-style-type: none"> a. Standing Committees Reports; b. Working Group Reports; c. Liaison Reports; d. Appointment of Committee/Working Group members by Chair. 	8:45 PM
6. STAFF BRIEFINGS: <ul style="list-style-type: none"> a. None 	8:50 PM
7. FUTURE AGENDA ITEMS: <ul style="list-style-type: none"> a. CodeNEXT presentation at joint meeting with Downtown Commission (Wed. June 21) b. City of Austin's Tree Funding program (Mon. June 26) c. Appoint Downtown Commission Liaison d. City of Austin Great Streets tree standards (TBD) 	8:50 PM
8. ANNOUNCEMENTS: <ul style="list-style-type: none"> a. Chair Announcements; b. Items from Commission Members; c. Items from City Staff; 	8:55 PM
ADJOURNMENT	9:10 PM

The City of Austin is committed to compliance with the American with Disabilities Act. Reasonable modifications and equal access to communications will be provided upon request. Meeting locations are planned with wheelchair access. If requiring Sign Language Interpreters or alternative formats, please give notice at least 2 days before the meeting date. Please contact Nichole Koerth in the Planning and Zoning Department at nichole.koerth@austintexas.gov or (512) 974-2752, for additional information. TTY users route through Relay Texas at 711.

Design Commission: Committees, Working Groups, and Liaisons

Committees

1. Executive Committee: D. Carroll (Chair), B. Whatley (Vice Chair), TBD (Secretary)

Working Groups

1. Planning and Urban Design Working Group: E. Taniguchi, B. Whatley, A. Coleman, D. Carroll
2. Architecture and Development Working Group: B. Whatley, M. Gonzalez, D. Carroll
3. Landscape and Infrastructure Working Group: S. Franco, M. Henao-Robledo, A. Coleman
4. Public Engagement Working Group: S. Franco, M. Henao-Robledo, C. Kenny
5. CodeNEXT Working Group: D. Carroll, M. Gonzalez

Liaisons

1. Downtown Commission Liaison / Downtown Austin Plan: TBD

Representatives

1. South Central Waterfront Advisory Board: S. Franco

Staff to Design Commission

City of Austin, Planning and Zoning Department, Urban Design Division
One Texas Center, 505 Barton Springs Rd., 5th floor, Austin, TX 78704

Executive Liaison: Katie.Mulholland@austintexas.gov (512) 974-3362

Staff Liaison: Nichole.Koerth@austintexas.gov (512) 974-2752

Downtown Density Bonus Liaison: Anne.Milne@austintexas.gov (512) 974-2868

Acting City Architect: Raymundo.Minjarez@austintexas.gov (512) 974-1618

Resources

1. Urban Design Guidelines for Austin:
http://www.austintexas.gov/sites/default/files/files/Boards_and_Commissions/Design_Commission_urban_design_guidelines_for_austin.pdf
2. Design Commission backup :
http://www.austintexas.gov/cityclerk/boards_commissions/meetings/22_1.htm
3. Downtown Density Bonus program
https://www.municode.com/library/tx/austin/codes/land_development_code?nodeId=TIT25_LADE_CH25-2ZO_SUBCHAPTER_CUSDERE_ART3ADRECEDI_SPAGERE_S25-2-586DODEBOP



**DESIGN COMMISSION
MONDAY, APRIL 24, 2017 6:00 PM
AUSTIN CITY HALL, BOARDS AND COMMISSIONS ROOM 1101
301 W. SECOND STREET, AUSTIN, TEXAS 78701**

Meeting Minutes

Call to order by: **Chair Taniguchi at 6:05 PM.**

Roll Call: **B. Whatley, B. Frail, C. Kenny, B. Luckens, and M. Henao-Robledo not present.**

1. CITIZEN COMMUNICATION: **None.**

2. MEETING MINUTES (Discussion and Possible Action):

a. Discussion and possible action on the March 27, 2017 meeting minutes.

The motion to approve the minutes as drafted made by A. Coleman; second by D. Carroll; was approved on a unanimous vote of [6-0]; B. Whatley, B. Frail, C. Kenny, B. Luckens, and M. Henao-Robledo not present.

3. NEW BUSINESS (Discussion and Possible Action):

a. Discussion and possible action on the 405 Colorado design development submittal, located at 405 Colorado St., seeking review for substantial compliance with the [Urban Design Guidelines for Austin](#) in accordance with the Gatekeeper requirements of [LDC 25-2-586](#) for the Downtown Density Bonus Program ([Michele Haussmann](#), Principal, Land Use Solutions)

A. Coleman recused herself and stepped off the dais at 6:06 pm.

Michele Haussmann (Land Use Solutions), Jay Smith and Jeff Paine (Duda Paine Architects), and Melissa McKinney (Coleman & Associates) presented the project. John Kennedy (Downtown Austin Alliance) spoke in support of the project and the need for parking management downtown. Commissioners asked questions about grading, bicycle parking, green building innovation, community benefits, public art on interior and exterior of the building including lighting and murals. Lyon Shadowman and Mike Harris (from Brandywine) answered questions about the sky lobby, parking, and car share.

The motion to not send a letter that the Design Commission does not support the project as is, and that the project does not substantially comply with the Urban Design Guidelines of Austin made by S. Franco; second by D. Carroll; motion failed on a vote of 5-0; Commissioner Coleman recusing; B. Whatley, B. Frail, C. Kenny, B. Luckens, and M. Henao-Robledo not present.

- b. Discussion and possible action on the Austin Energy SHINES project, located at 3412 Zach Scott Street, seeking support for the project under Resolution No. 20071129-046 and review of Alternative Equivalent Compliance under Subchapter E of the Land Development Code (Greg Ulcak, P.E., Civil Land Group, LLC)

7:01pm A. Coleman returned to the dais.

Lisa Martin (Austin Energy), Donna Carter (Carter Design Associates), and Greg Ulcak (Civil Land Group), Christine Freundl (Economic Development) presented and answered questions. Commissioners asked questions about PV source, sidewalk, location, shade for benches and placards, battery storage safety and security.

The motion to recommend the project made by M. Gonzalez; second by K. Halloran; friendly amendment by A. Coleman to explore shading for the plaza; amendment seconded by Chair Taniguchi and accepted by K. Halloran; approved on a unanimous vote of 6-0; B. Whatley, B. Frail, C. Kenny, B. Luckens, and M. Henao-Robledo not present.

Chair Taniguchi will provide a letter.

- c. Discussion and possible action on the 4th Street Skybridge project connecting the Austin Convention Center and the Hilton Hotel, located at 400 ½ Neches St., seeking a recommendation to Planning Commission and Council to authorize the approval of an encroachment agreement (Nikelle Meade, Partner, Husch Blackwell LLP)

Nikelle Meade (Husch Blackwell), Travis Albrecht (project architect), John Colt (Director of Hilton property operations), Mark Tester (Austin Convention Center), and Robert Watson (Hilton Hotel) presented and answered questions. Commissioner asked questions about safety, future bus technology, protection from sun and rain, if the bridge was lit at night, hours of operation, if it was open to the public, seating, passing width, etc.

The motion to generally support the project and find that it substantially complies with the intent of the Urban Design Guidelines made by A. Coleman; second by M. Gonzalez; friendly amendment by S. Franco to include consideration for incorporating safety into the exit door of the Hilton 15 feet away from the rail platform; amendment accepted by A. Coleman and M. Gonzalez; the motion failed on a vote of 5-1; K. Halloran opposed; B. Whatley, B. Frail, C. Kenny, B. Luckens, and M. Henao-Robledo not present.

The motion to support this pedestrian walkway in concept design with the focus being on public access and pedestrian safety made by K. Halloran, second by Chair Taniguchi; failed on a vote of 5-1; S. Franco opposed; B. Whatley, B. Frail, C. Kenny, B. Luckens, and M. Henao-Robledo not present.

- d. Discussion and possible action on Election of Officers

A. Coleman stepped off the dais at 9:35 pm and returned at 9:38 pm.

M. Gonzalez made a motion to nominate D. Carroll as the new Chair; S. Franco seconded; approved on a unanimous vote of 6-0; B. Whatley, B. Frail, C. Kenny, B. Luckens, and M. Henao-Robledo not present.

Commission will hold off on election of remaining officers until next meeting.

4. OLD BUSINESS (Discussion and Possible Action):

- a. Discussion and possible action on the Convention Center expansion plan ([C. Kenny](#))

S. Franco read the letter drafted by C. Kenny and S. Franco. D. Carroll suggested replacing office with residential/mixed towers to activate the area. Chair Taniguchi suggested adding affordable housing in residential development included in the expansion. S. Franco scribed and read the edits.

D. Carroll made a motion to approve the drafted letter with the edits discussed, Chair Taniguchi seconded, approved on a unanimous vote of 6-0; B. Whatley, B. Frail, C. Kenny, B. Luckens, and M. Henao-Robledo not present.

S. Franco made the motion to extend the meeting for 10 minutes past 10pm to give the City Architect time to speak; Chair Taniguchi seconded, approved on a unanimous vote of 6-0; B. Whatley, B. Frail, C. Kenny, B. Luckens, and M. Henao-Robledo not present.

- b. Discussion and possible action on the CodeNEXT draft code and map ([D. Carroll](#))

Item was postponed by general consensus until the next Design Commission meeting on May 22, 2017.

- c. Discussion and possible action on the Infrastructure Design Guidelines as directed by City Council [Resolution No. 20120816-060](#) including discussion of [New York City guidelines](#) ([Chair Taniguchi](#))

Item was postponed by general consensus until the next Design Commission meeting on May 22, 2017.

5. COMMITTEE AND WORKING GROUP REPORTS (Discussion and Possible Action)

- a. Standing Committees Reports: **None**
- b. Working Group Reports: **None**
- c. Liaison Reports: **None**

d. Appointment of Committee/Working Group members by Chair: **None**

6. STAFF BRIEFINGS:

a. Tree fund ([Raymundo Minjarez](#), Interim City Architect, COA Public Works Dept.)

Acting City Architect Ray Minjarez presented the current funds in the Tree Fund.

No action taken by the Commission.

7. FUTURE AGENDA ITEMS:

Election of remaining Officers (May 22, 2017)

8. ANNOUNCEMENTS

a. Chair Announcements: **None**

b. Items from Commission Members: **None**

c. Items from City Staff: **None**

ADJOURNMENT by consensus at: 10:13 pm

A. PROJECT INFORMATION

Project Name

Marriott Hotel at Cesar Chavez

Project Type:

☐ Infrastructure
 ☐ City building & site
 ☐ Density bonus
☒ Private project
 ☐ Other

Project Location/Address

304 E. Cesar Chavez Street

Applicant

Richard T. Suttle, Jr, Armbrust & Brown, PLLC

Property Owner

South 1/2 Block 8 Venture

Applicant Mailing Address

100 Congress, Suite 1300
Austin, TX 78701

Property Owner Mailing Address

1509 Old West 38th Street
Austin, TX 78731

Applicant Telephone Number

512-435-2300

Property Owner Telephone Number

512-472-3135

Project Start Date

June 2017

Project Completion Date

December 2019

Applicant's Architect

HKS
Michael Strohmer, AIA

Applicant's Engineer

Stantec
Joe Isaja, PE

1] Indicate if proposed Project is required by City Ordinance to be reviewed by the Design Commission.

Yes, the project is seeking the Downtown Density Bonus

2] Describe the recommendation that you are requesting from the Design Commission.

Recommendation to support Downtown Density Bonus request

3] Current Design Phase of Project (Design Commission prefers to see projects right after approved schematic design).

The project design is in the Construction Documentation phase.

4] Is this Project subject to Site Plan and/or Zoning application approvals? Will it be presented to Planning Commission and/or City Council? If so, when?

Yes, site plan is in review SP-2016-0300C

No zoning required

No presentation to Planning Commission or City Council required, with the exception of Encroachment Agreements

5] Does this Project comply with Land Development Code Subchapter E? List specifically any Alternative Equivalent Compliance request if any. Please refer to website for Alternate Equivalent Compliance (AEC) requirements.

https://www.municode.com/library/tx/austin/codes/code_of_ordinances?nodeId=TIT25LADE_CH25-2ZO_SUBCHAPTER_EDESTMIUS

Yes, and also complies with the Urban Design Guidelines and Downtown Density Bonus gatekeeper requirements

B. PROJECT BACKGROUND

6] Provide project background including goals, scope, building/planning type, and schedule. Broadly address each of the "Shared Values for Urban Areas" that are listed on Page 6 of the Urban Design Guidelines. Attach additional pages as needed.

Great thought has been put into the architectural design to create a dense yet appropriately scaled hotel building that serves the downtown convention market as well as the locals who will stay and dine at this establishment. The architecture is designed to respect the local context and character of Austin to ensure that it feels authentic and unique to this city. The restaurant and bar open up to the street corner making it easily approachable to all. Outdoor seating covered with low canopies will help to activate the sidewalks and give a pedestrian scale



7] Has this project conducted community/stakeholder outreach? If so, please provide documentation to demonstrate community/stakeholder support of this project.

No

8] Is this project submitting for the Downtown Density Bonus Program? If so, please provide a completed Downtown Density Bonus Application.

Yes, application submitted October 6, 2016

9] Has the project been reviewed by COA Department (i.e. DAC) Staff? If so, please describe and cite any relevant comments or feedback that the Commission should be aware of.

Yes, the site plan and license agreements are currently in review. Significant coordination has taken place with Urban Design, the City Arborist and Transportation to coordinate the streetscape and pedestrian experiences. Remaining comments are administrative in nature and should be clear in the next 3-5 weeks.

10] Are there any limitations to compliance or planning principles due to the specific requirements of this project that the Commission should be aware of?

No

C. EXISTING CONDITIONS AND CONTEXT

11] Identify connectivity to public transportation including, bicycle and pedestrian routes and/or multi-modal transportation. Does the project comply with ADA requirements? Provide a site context map and attach additional pages as needed.

Yes, the project complies with ADA requirements. The site is located at 304 E. Cesar Chavez between Trinity Street and San Jacinto Street and within close proximity to many transportation options, including bike lanes, access to CapMetro rail and bus stops. The City's Downtown Metro Rail Station is located 3 blocks from the site.

12] Identify and describe any existing features that are required to be preserved and/or protected such as heritage trees, creeks or streams, endangered species (flora and/or fauna)? Attach additional site diagrams as needed.

Not applicable

13] Is this project within any City of Austin planning district, master plan, neighborhood plan, regulatory district, overlay, etc.? If so, please illustrate how this project conforms to the respective plan. Attach additional pages as needed. (See below for requirements.)

The project is within the Downtown Austin Planning (DAP) Area which provided clear direction toward creation and implementation of the Downtown Density Bonus program, including compliance with the gatekeeper requirements and the Urban Design guidelines. This project. Further, the DAP recommends downtown's future growth should support a vibrant, diverse and pedestrian-friendly district and downtown should evolve into a compact and dense urban district, with new buildings contributing positively to sustainability, quality of life and the downtown experience. This project will aid in achieving the goals of the DAP.

14] List any project program and/or site constraints that should be considered.

Not applicable

D. RELATIONSHIP TO PUBLIC REALM

Public realm is defined as any publically owned streets, pathways, right of ways, parks, publicly accessible open spaces and any public and civic building and facilities. The quality of our public realm is vital if we are to be successful in creating environments that people want to live and work in.

15] The shared values outlined in the Urban Design Guidelines include Human Character, Density, Sustainability, Diversity, Economic Vitality, Civic Art, A Sense of Time, Unique Character, Authenticity, Safety and Connection to the Outdoors. How is the project addressing these unique community characteristics? Is the project developing any public amenities for urban continuity and vital place making?

This hotel project will enhance the public realm in many ways. One of the goals of the project is to create a dense yet appropriately scaled building that serves the downtown convention market as well as the locals who will stay and dine at this establishment. The architecture is designed to respect the local context and character of Austin to ensure that it feels authentic and unique to this city. The restaurant and bar open up to the street corner making it easily approachable to all. Outdoor seating covered with low canopies will help to activate the sidewalks and give a pedestrian scale.

16] Does this project encourage street level activity to engage and respond to functional needs such as shade, rest areas, multi-modal transportation storage and paths?

Yes, see attached renderings and plans.

17] How will the project be a good neighbor to adjacent properties? For example, describe the treatment of the transition area between properties, i.e. fence, landscape improvements, etc.

The hotel project will be a good neighbor by creating great outdoor public areas and wide sidewalks with trees and canopies that will provide shade to the pedestrians. The project builds up to the sidewalks on three sides and runs along an alley on the north side of the site.

E. ENVIRONMENTAL/SUSTAINABLE ISSUES

The Austin Urban Design Guidelines set a goal that, "All development should take into consideration the need to conserve energy and resources. It should also strive for a small carbon footprint."

18] Please list any significant components of the project that contribute to meeting this goal. If the project has been designed to accommodate future inclusion of such components (for example, by being built "solar ready") please list them.

Designing a building's systems to use less energy is the focus of this category. A commissioning agent will be contracted to verify the installation and performance of the HVAC systems as well as lighting and hot water systems. These systems are being designed to meet, and in some cases exceed the standard requirements. In terms of energy efficiency, the new building design is targeting at least a 12% reduction in the amount of energy the building consumes annually over the code required baseline. This reduction will be the result of energy efficient systems, the building orientation and the strategic selection of exterior building materials.

19] If the project is being designed to meet any sustainability/environmental standards or certifications (for example, LEED Silver), please list them here and attach relevant checklists or similar documents that demonstrate how the standard or certification will be achieved.

The project will comply with 2-Star AEGB requirements; the Austin Energy Letter of Intent and corresponding checklist is attached to the Downtown Density Bonus application package

20] If the project contains other significant sustainability components not included above that the Commission should note, please list them here.

N/A



**DOWNTOWN DENSITY BONUS PROGRAM (DDBP)
SUBMITTAL APPLICATION**

1. Project Name: [Marriott Hotel at Cesar Chavez](#)

2. Property Owner

Name: [South 1/2 Block 8 Venture](#)

Address: [1509 Old West 38th Street, Suite 3, Austin, TX 78731](#)

Phone: [512-472-3135](#)

E-mail: jcalmiller@aol.com

3. Applicant/Authorized Agent

Name: [Richard T. Suttle, Jr., Armbrust & Brown, PLLC](#)

Address: [100 Congress Avenue, Suite 1300, Austin, TX 78701](#)

Phone: [512-435-2300](#)

E-mail: RSUTTLE@ABAUSTIN.COM and LCARLEY@ABAUSTIN.COM

4. Anticipated Project Address:

[304 East Cesar Chavez Street](#)

5. Site Information

- a. Lot area: 35,411 square feet
- b. Existing zoning (include any zoning suffixes such as "H," "CO," etc. If the property has a conditional overlay (CO), provide explanation of conditions (attach additional pages as necessary) :

CBD

- c. Existing entitlements:

i) Current floor to area (FAR) limitation: 8:1

ii) Current height limitation (in feet): n/a

iii) Affected by Capitol View Corridors (CVCs) Yes/No?

☐ Yes

☒ No

If yes, please list specific CVC and allowable maximum height.

6. Existing Deed Restrictions

If any, detail existing deed restrictions on the property that impact height and/or density:

n/a

7. Proposed Project Information

- a. Total square footage - Only include the square footage that counts towards FAR; see [LDC 25-1-21\(40\), \(44\), and \(45\)](#):

524,628 gsf

- b. Gross floor area devoted to the different land use categories included in the project (e.g., retail/restaurant, office, apartment, condominium, hotel):

204,000 sf guestrooms, 62,447 sf meeting space, 9,765 sf hotel rest/bars, 2,000 sf fitness

- c. Number or units (if project includes residential development): [n/a](#)

- d. Number of rooms (if hotel or similar use): [613](#)

- e. Number of floors: [31](#)

- f. Height: [380'-6"](#)

- g. Maximum FAR requested: [15 : 1](#)

8. Gatekeeper Requirements

Provide an explanation of how this project meets the *Gatekeeper* requirements of the DDBP as described in 25-2-586. Attach additional page(s) as necessary:

[The project substantially complies with the Urban Design Guidelines, as described in Item 11 below.](#)

[In addition, the project has included a schematic site plan, building elevations, and other documents to show the project in relation to its surroundings.](#)

[The project shall execute a restrictive covenant committing to streetscape improvements consistent with the Great Streets standards.](#)

[Lastly, the project shall execute a restrictive covenant committing to achieve a minimum two star rating under the Austin Energy Green Building program.](#)

9. Community Benefits

Detail which community benefits will be used and how they will be applied (affordable housing on site, fee in lieu of, affordable housing + community benefit, etc.). Attach additional page(s) as necessary:

The proposed use is a hotel, which allows obtaining additional density by meeting the Gatekeeper requirements. The project proposes to meet the Gatekeeper requirements.

10. Density Bonus Calculation

Provide a calculation method of how the additional FAR is sought including site area and amount per square foot. Calculation should include all *Gatekeeper* items plus all community benefits:

The hotel project proposes to meet the Gatekeeper requirements.

11. Relate Project to the Urban Design Guidelines for Austin

Provide detailed explanation of how the project substantially complies with the [Urban Design Guidelines for Austin](#) (UDG) with reference to specific guidelines by completing the attached UDG spreadsheet. Attach additional page(s) as necessary.

12. Acknowledgements

- a. Applicant has reviewed [25-2-586 Downtown Density Bonus Program](#):

☒ Yes☐ No

- b. Applicant understands that a standard restrictive covenant template will be drafted by the City of Austin to address Gatekeeper requirements in accordance with 25-2-586:

☒ Yes☐ No

- c. Applicant understands that submittal of the project's signed Austin Energy Green Building Letter of Intent and accompanying scorecard is mandatory:

☒ Yes☐ No

- d. Applicant has received and reviewed a copy of the [Urban Design Guidelines for Austin](#):


☒ Yes☐ No

- e. Applicant has scheduled presentation to the Design Commission Working Group and follow-up Design Commission Meeting by coordinating dates with Design Commission Liaison (Jorge.rousselin@austintexas.gov):

☒ Yes☐ No

- f. If considering in lieu fee or provision of on-site affordable housing as a public benefit, Applicant has scheduled a coordination meeting with the Neighborhood Housing and Community Development Department to detail program requirements and obtained letter of affordability from NHCD:

☒ Yes☐ No



Signed: Owner or Applicant

Authorized Agent Richard T. Suttle, Jr

Date submitted October 6, 2016



DOWNTOWN DENSITY BONUS PROGRAM (DDBP) APPLICANT'S SUBMITTAL CHECKLIST

Submitted:

- ☒ Completed DDBP Application;
- ☒ Vicinity plan/aerial locating the project in its context, and showing a minimum 9 block area around the project;
- ☒ Location of nearby transit facilities;
- ☒ Drawings:
 - Site plan;
 - Floor plans;
 - Exterior elevations (all sides) with height and FAR calculations;
 - Three-dimensional views;
- ☒ Copy of the project's signed Austin Energy Green Building Letter of Intent and scorecard;
- ☒ Other items that may be submitted but not required: Narrative / graphics / photos to further describe the project; and
- ☐ Letter of affordability and acknowledgment from NHCD for affordable housing community benefit.



MARRIOTT HOTEL
AUSTIN, TEXAS

DENSITY BONUS APPLICATION
AUGUST 23, 2016



NARRATIVE DESCRIPTION OF THE PROPOSED PROJECT

The design for the hotel includes a 31-story, 613 room hotel of approximately 524,628 SF located in the Central Business District. Using the Austin Downtown Density Bonus Program guidelines the hotel is requesting a maximum density of 15:1.

The project will serve as a convention hotel, offering lodging and additional meeting spaces that are conveniently located adjacent to the Austin Convention Center. The distinct building design uses a modern palate of materials which blends a seven story podium base and rooftop pool deck with a high rise hotel tower that substantially complies with the Urban Design Guidelines. The Great Streets program governs the streetscape on the east, south and west sides of the project and the ground level features a lobby, lounge and restaurant that will activate the sidewalks. The hotel will be LEED accredited and will meet a Two Star rating using the Austin Green Building Program.

Review of Substantial Compliance with UD Guidelines

Area Wide Guidelines		
Guideline	Achieved? (Yes/No)	Applicant's Comments
1 AW-1: Create dense development	Yes	concentrates a hotel use in the CBD and enhances the convention center
2 AW-2: Create mixed-use development	Yes	project includes a hotel and restaurant open to the public and should be considered a mixed use development
3 AW-3: Limit development which closes downtown streets	Yes	meeting Great Streets criteria provides connection to pedestrian circulation routes and provides a human scale interface with the building; no street closures
4 AW-4: Buffer neighborhood edges	N/A	is not applicable, no neighborhood edges
5 AW-5: Incorporate civic art in both public and private development	No	no civic art is planned
6 AW-6: Protect important public views	Yes	no elevated walkways to adjacent buildings, no Capitol view corridors impeded
7 AW-7: Avoid historical misrepresentations	Yes	the building design is distinctly a modern high rise
8 AW-8: Respect adjacent historic buildings	N/A	is not applicable, not adjacent to historical structures
9 AW-9: Acknowledge that rooftops are seen from other buildings and the street	Yes	design includes a rooftop pool deck and screens rooftop mechanical equipment
10 AW-10: Avoid the development of theme environments	Yes	building is not themed
11 AW-11: Recycle existing building stock	No	No planned use of existing buildings

Public Streetscape Guidelines

12 PS-1. Protect the pedestrian where the building meets the street	No	no continuous overhead cover of pedestrian routes is planned
13 PS-2. Minimize curb cuts	Yes	curb cuts are minimized and existing alley is utilized
14 PS-3. Create a potential for two-way streets	Yes	Cesar Chavez is already a two way street; San Jacinto and Trinity are one way streets; site vehicular access will work if the city decided to make them two way streets
15 PS-4. Reinforce pedestrian activity	Yes	Great Street guidelines for wide sidewalks that enhance pedestrian activity are used in the design

Review of Substantial Compliance with UD Guidelines

16 PS-5. Enhance key transit stops	N/A	is not applicable, project is not a transit stop or adjacent to a transit stop
17 PS-6. Enhance the streetscape	Yes	Great Street guidelines for street furniture and amenities are used in the design
18 PS-7. Avoid conflicts between pedestrians and utility equipment	Yes	design avoids conflicts between pedestrians and utility equipment
19 PS-8. Install street trees	Yes	Great Street guidelines for trees are used in the design
20 PS-9. Provide pedestrian-scaled lighting	Yes	Great Street guidelines for sidewalk lighting are used in the design
21 PS-10. Provide protection from cars/promote curbside parking	Yes	Great Street guidelines for sidewalk buffering are used in the design: benches, bike racks, trees
22 PS-11. Screen mechanical and utility equipment	Yes	mechanical and utility equipment is not located along the street edge
23 PS-12. Provide generous street-level windows	Yes	views from the sidewalk into the building are planned with abundant street level windows
24 PS-13. Install pedestrian-friendly materials at street level	Yes	pedestrian friendly materials will be used at the street level: glass, stone cladding and plaster

Building Guidelines

B-1. Build to the street	Yes	the building is proposed to the property lines on the north, east and west sides; the building is proposed to the edge of the Great Streets sidewalk area on the south side. Note that 8'-0" of developable property along Cesar Chavez Street must be designated to allow for the full Great Streets streetscape width
B-2. Provide multi-tenant, pedestrian-oriented development at the street level	N/A	is not applicable, the project has a single tenant; however a ground floor restaurant accessible to the public is proposed
B-3. Accentuate primary entrances	Yes	the building entrances are accentuated and are distributed on different sides of the building
B-4. Encourage the inclusion of local character	Yes	the building adds to the modern character of a central business district
B-5. Control on-site parking	Yes	parking is located below grade and occupied interior space can be seen from the street

Marriott Hotel at Cesar Chavez

Review of Substantial Compliance with UD Guidelines

B- 6. Create quality construction	Yes	the building is made of high quality, long term components suitable to an urban environment
B- 7. Create buildings with human scale	Yes	visibility into the building and articulation of the building materials at the street level creates a sense of human scale and adds interest

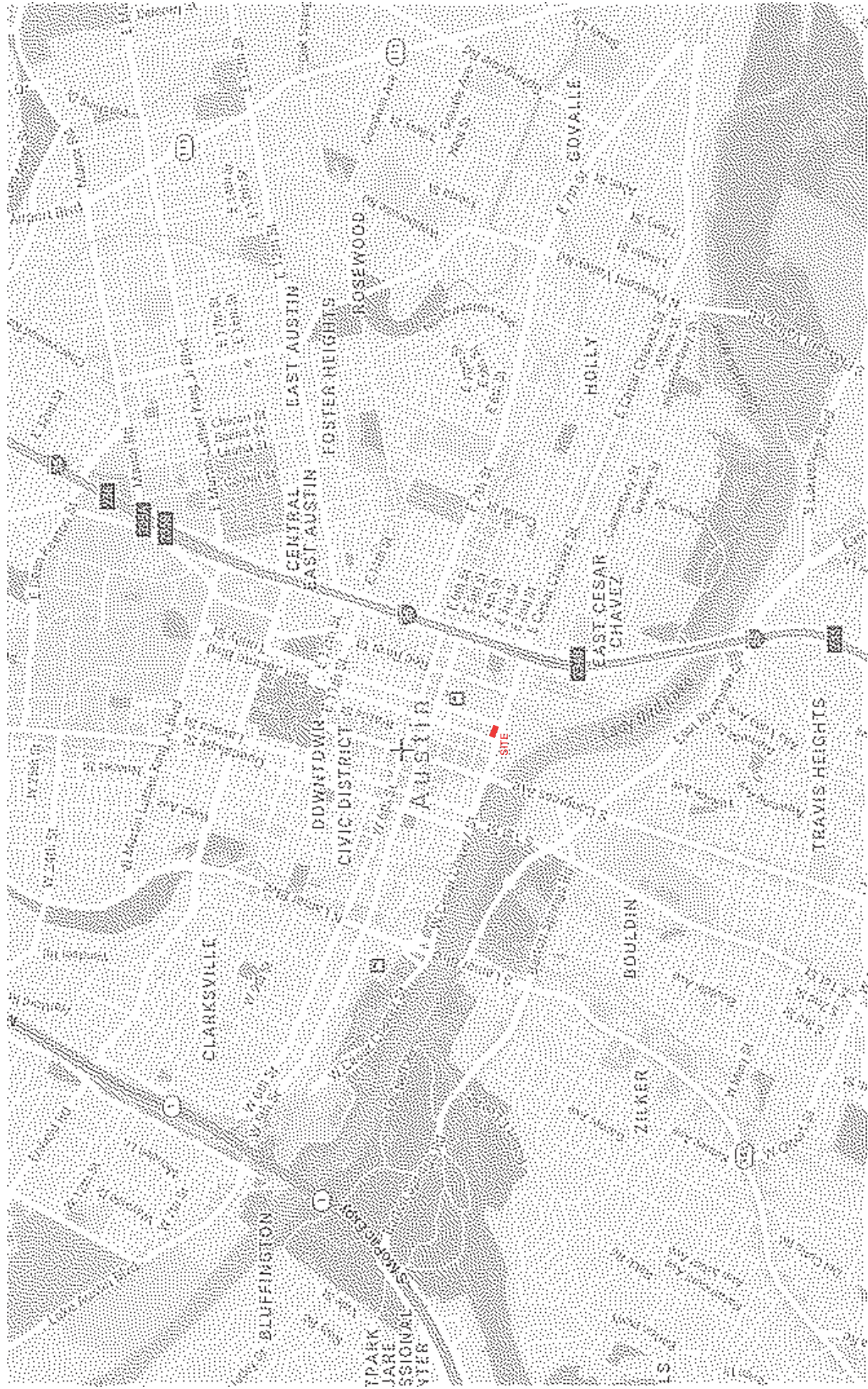
Marriott Hotel at Cesar Chavez

Review of Substantial Compliance with UD Guidelines

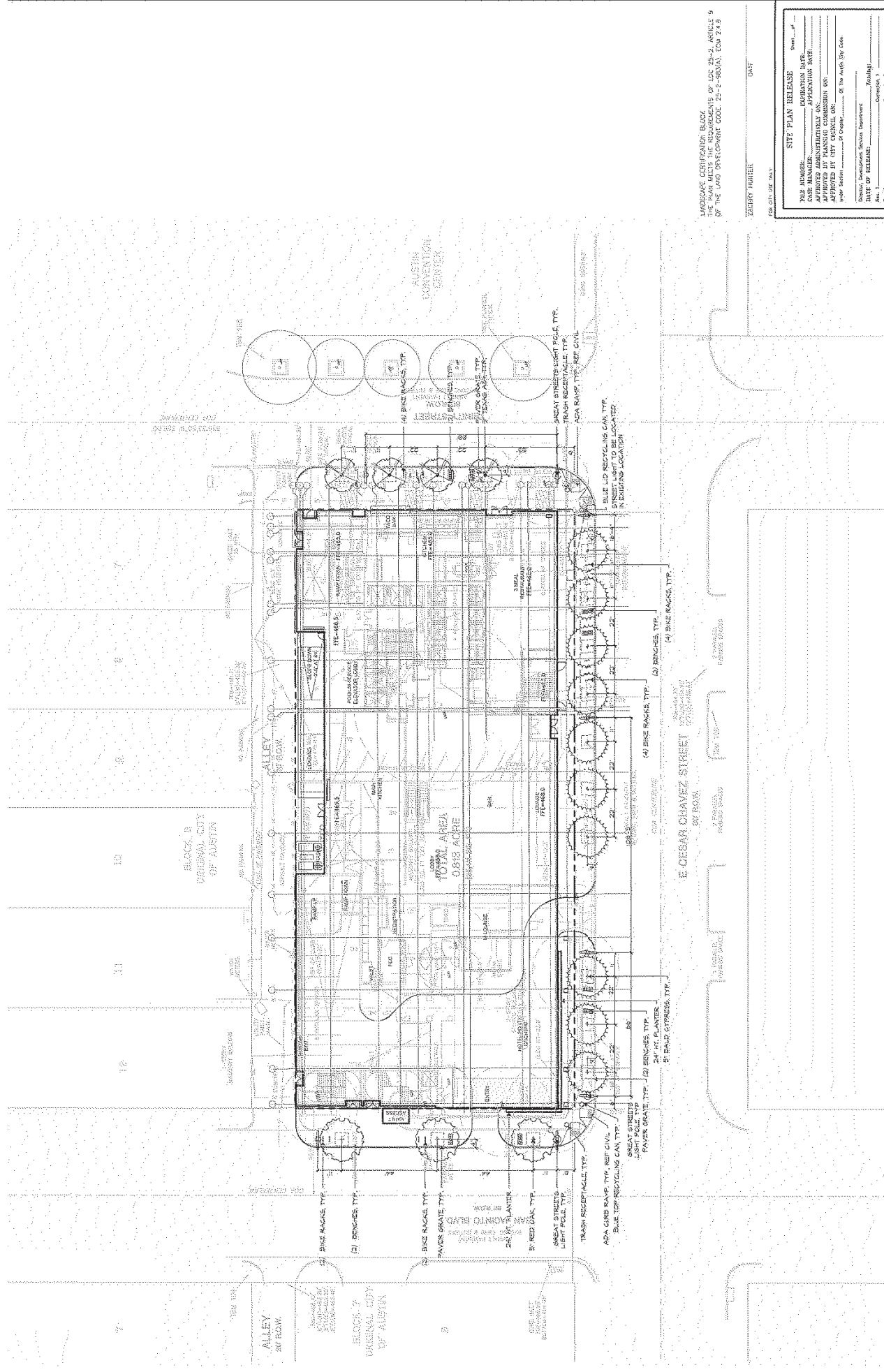
PZ- 16. Consider plaza operations and maintenance	N/A	
Conclusions		
Total number of Urban Design Guidelines	47	
Number of Guidelines applicable to Marriott Cesar Chavez:	34	
Number of Guidelines met by Marriott Cesar Chavez:	25	

Plaza and Open Space Guidelines

PZ-1. Treat the four squares with special consideration	No	
PZ- 2. Contribute to an open space network	No	
PZ- 3. Emphasize connections to parks and greenways	No	
PZ- 4. Incorporate open space into residential development (pool, deck, dog area)	No	
PZ-5. Develop green roofs	No	
PZ- 6. Provide plazas in high use areas	No	
PZ- 7. Determine plaza function, size, and activity	N/A	
PZ- 8. Respond to microclimate in plaza design	N/A	
PZ-9. Consider views, circulation, boundaries, and subspaces in plaza design	N/A	
PZ- 10. Provide an appropriate amount of plaza seating	N/A	
PZ- 11. Provide visual and spatial complexity in public spaces	N/A	
PZ- 12. Use plants to enliven urban spaces	N/A	
PZ- 13. Provide interactive civic art and fountains in plazas	N/A	
PZ- 14. Provide food service for plaza participants	N/A	
PZ- 15. Increase safety in plazas through wayfinding, lighting, & visibility	N/A	







LANDSCAPE CERTIFICATION BLOCK
THE PLAN MEETS THE REQUIREMENTS OF LOC 25-2, ARTICLE 9
OF THE LAND DEVELOPMENT CODE, 25-2-983(A), EOM 2.4.B

2025 2025 2025

[illegible]

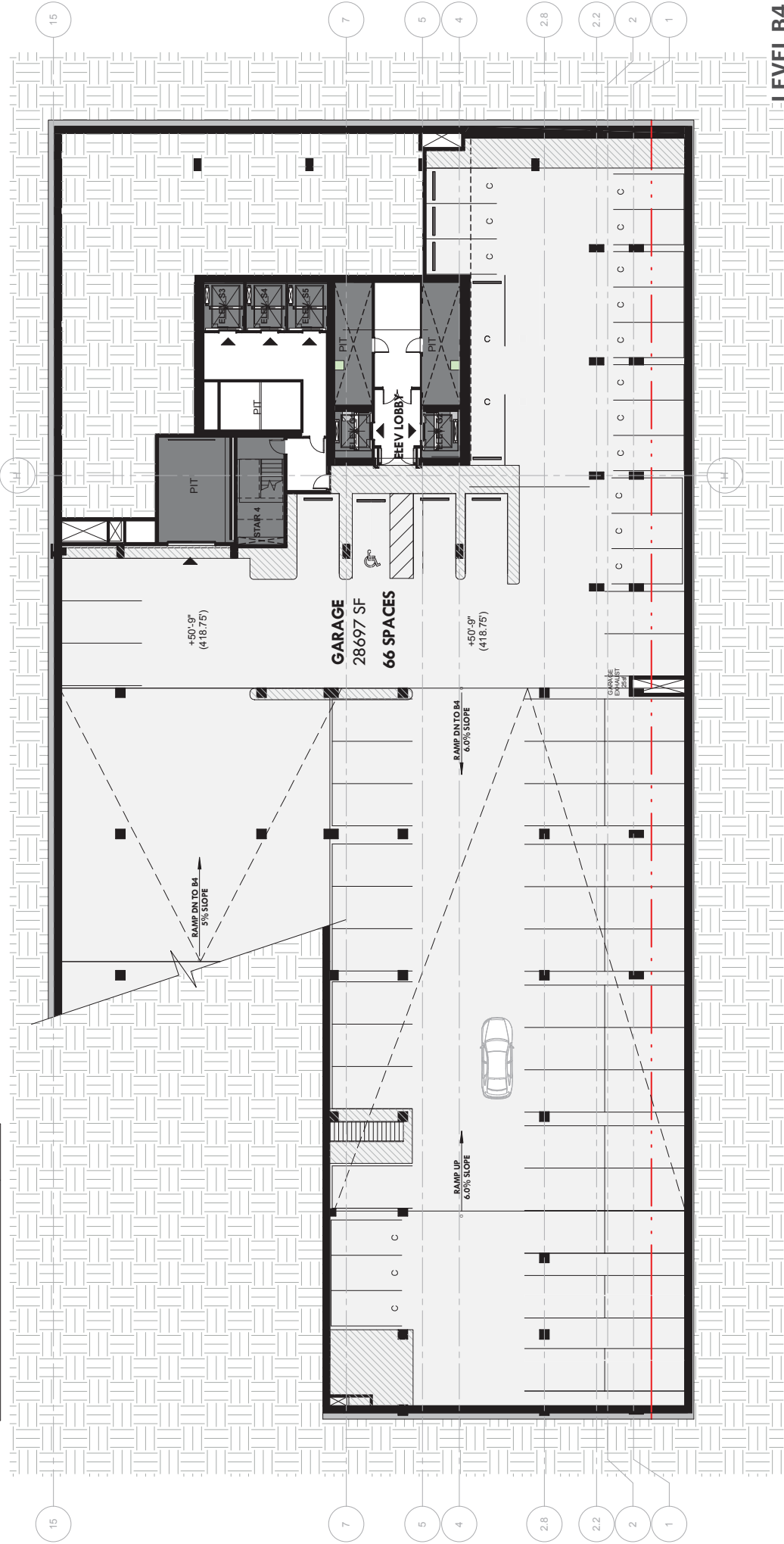
Age Group	Percentage (%)
0	~10
10	~25
20	~35
30	~45
40	~55
50	~60
60	~65

SCALE: 1"=20

THE LOCATION OF EXISTING UNDERGROUND UTILITIES ARE SHOWN IN AN APPROXIMATE WAY ONLY. THE CONTRACTOR SHALL DETERMINE THE EXACT LOCATION OF ALL EXISTING UTILITIES BEFORE COMMENCING WORK. HE AGREES TO BE FULLY RESPONSIBLE FOR ANY AND ALL DAMAGES WHICH



PARKING SUMMARY				
	SID	CC	ADA	VALET
B1	50	3	2	8
B2	44	3	2	30
B3	42	20	2	26
B4	16	19	1	30
TOTAL	152	45	7	94
				298

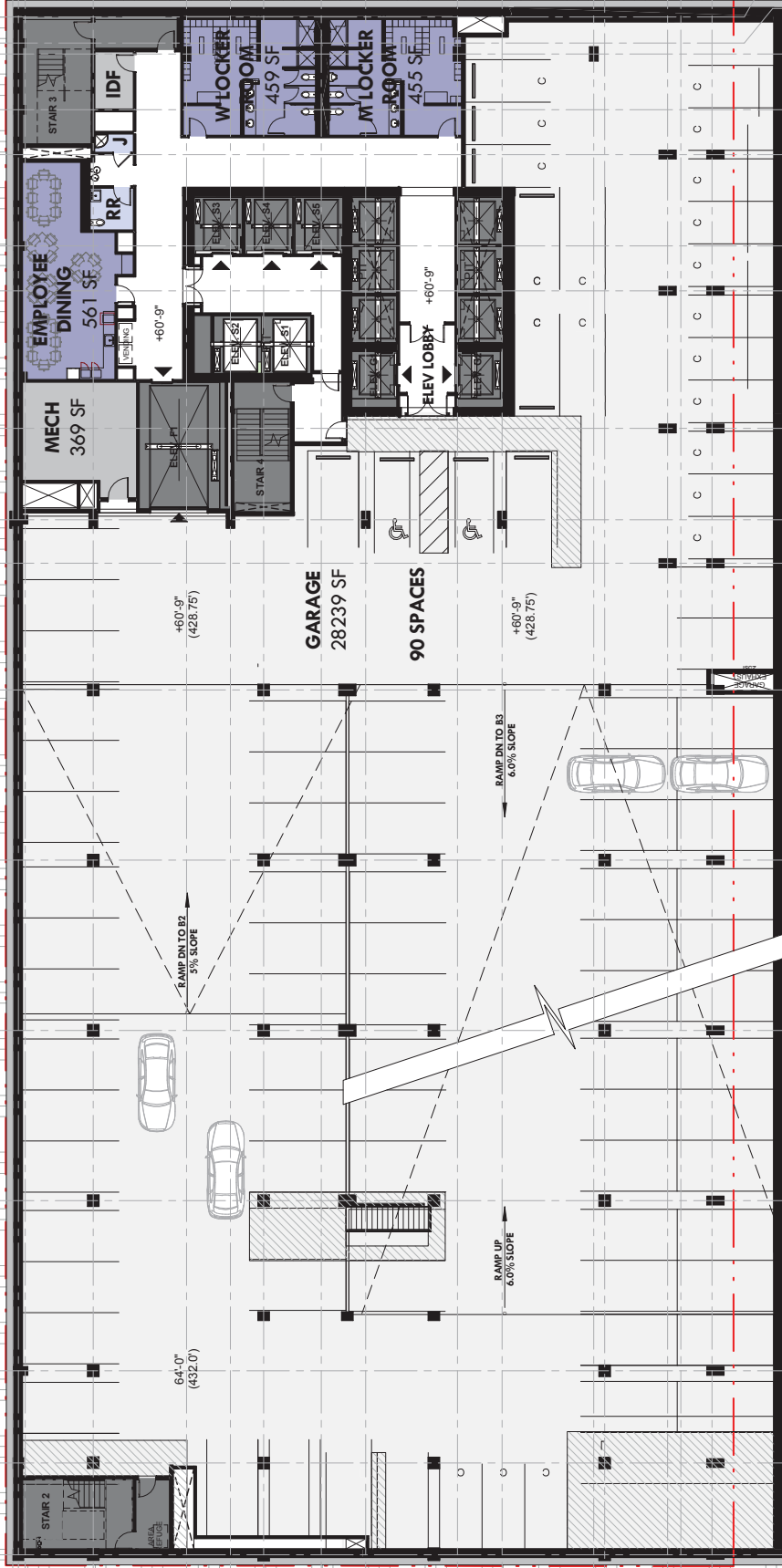


LEVEL B4

BASEMENT LEVEL 4



PARKING SUMMARY					
	SID	CC	ADA	VALET	TOTAL
B1	50	3	2	8	63
B2	44	3	2	30	79
B3	42	20	2	26	90
B4	16	19	1	30	66
TOTAL	132	45	7	94	298

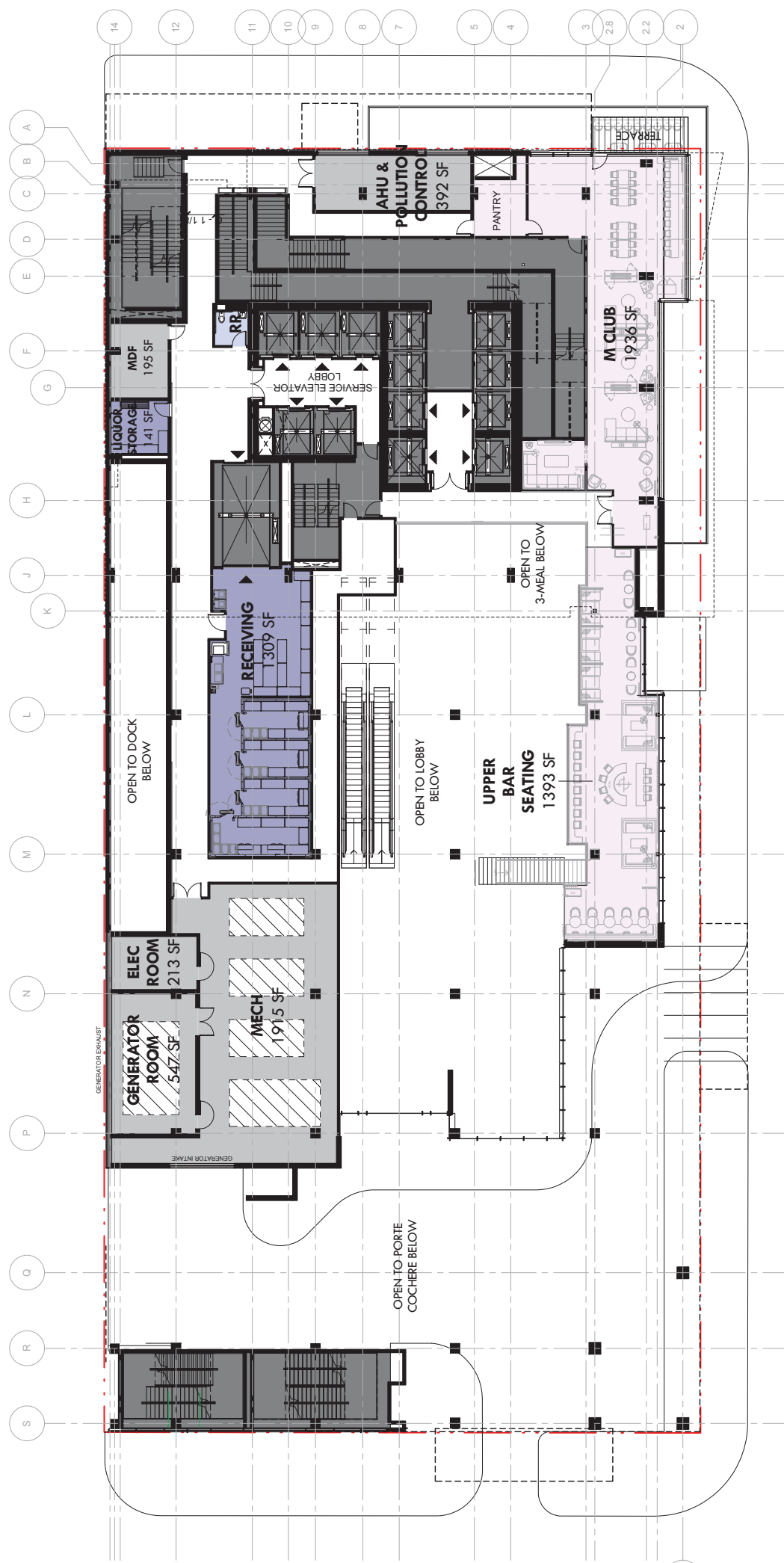


LEVEL B3

BASEMENT LEVEL 3





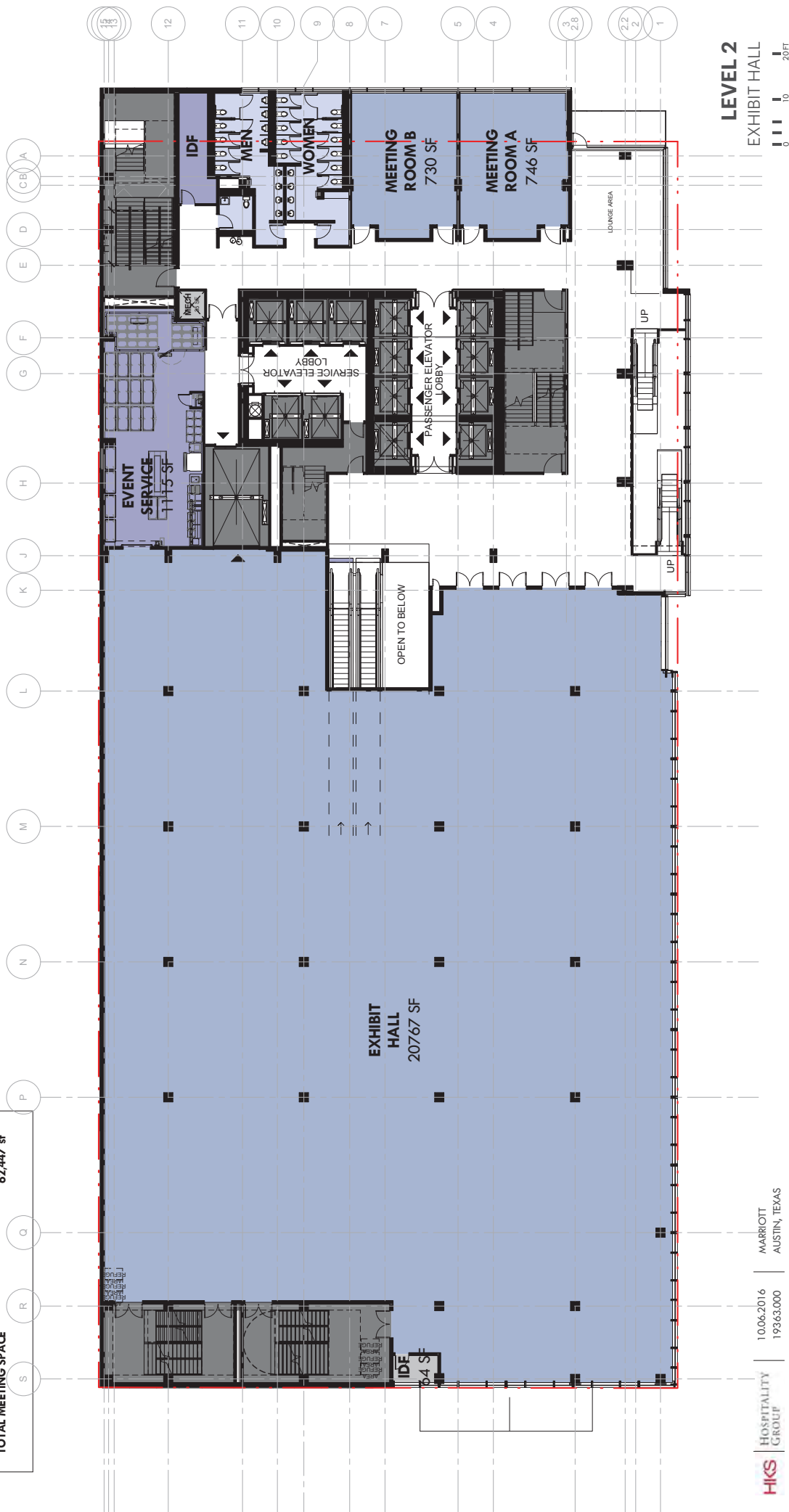


LEVEL 1M

MEZZANINE

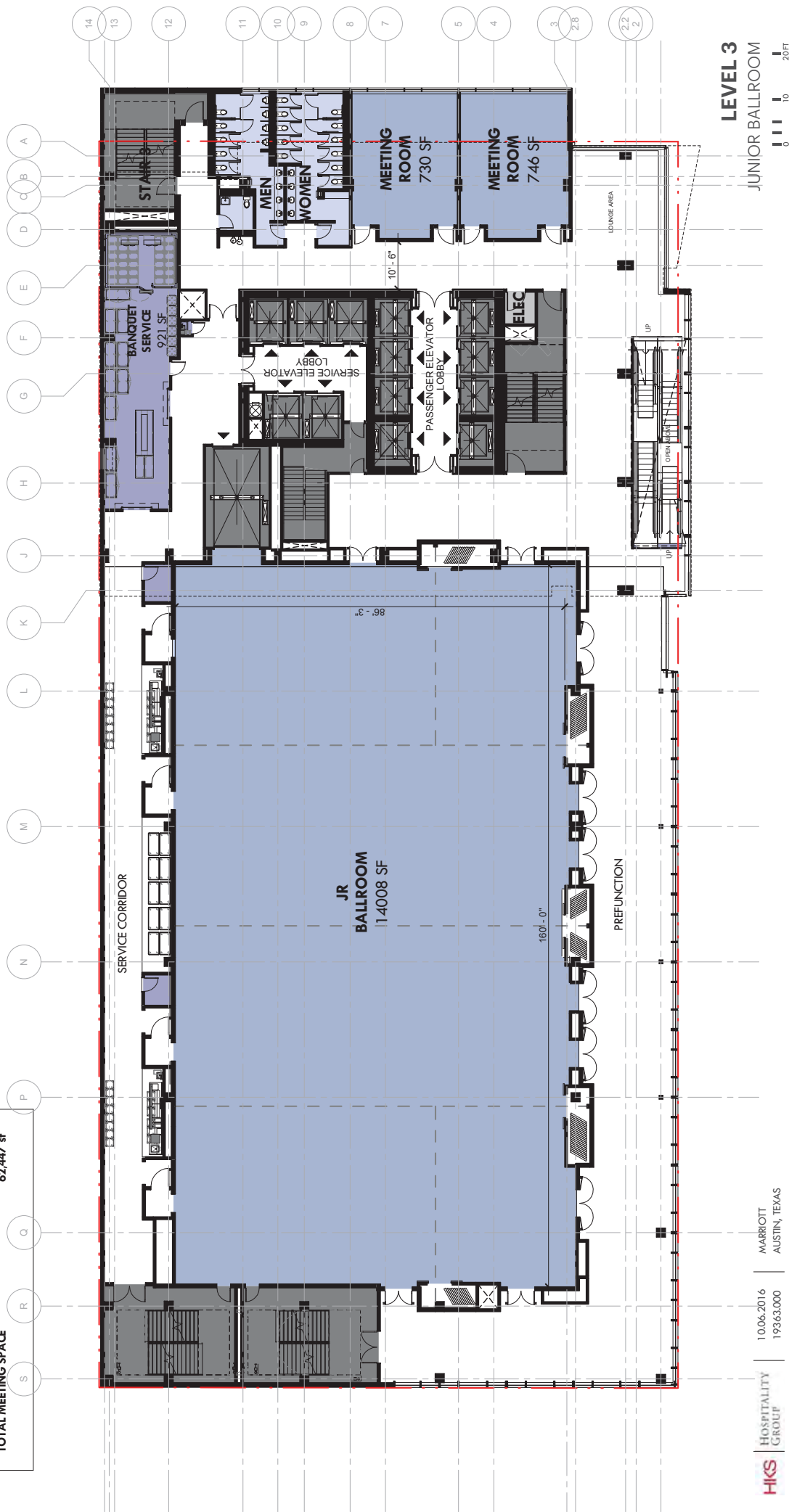
A vertical scale bar with two horizontal markings. The top marking is labeled "10" and the bottom marking is labeled "20FT".

MEETING ROOM SUMMARY		
MARRIOTT	Clear Dimensions	Area
GRAND BALLROOM	86'-3" x 160'-0"	14,008 sf
JUNIOR BALLROOM	86'-3" x 160'-0"	14,007 sf
EXHIBIT HALL		20,767 sf
MEETING ROOMS		13,277 sf
TOTAL MEETING SPACE		62,447 sf

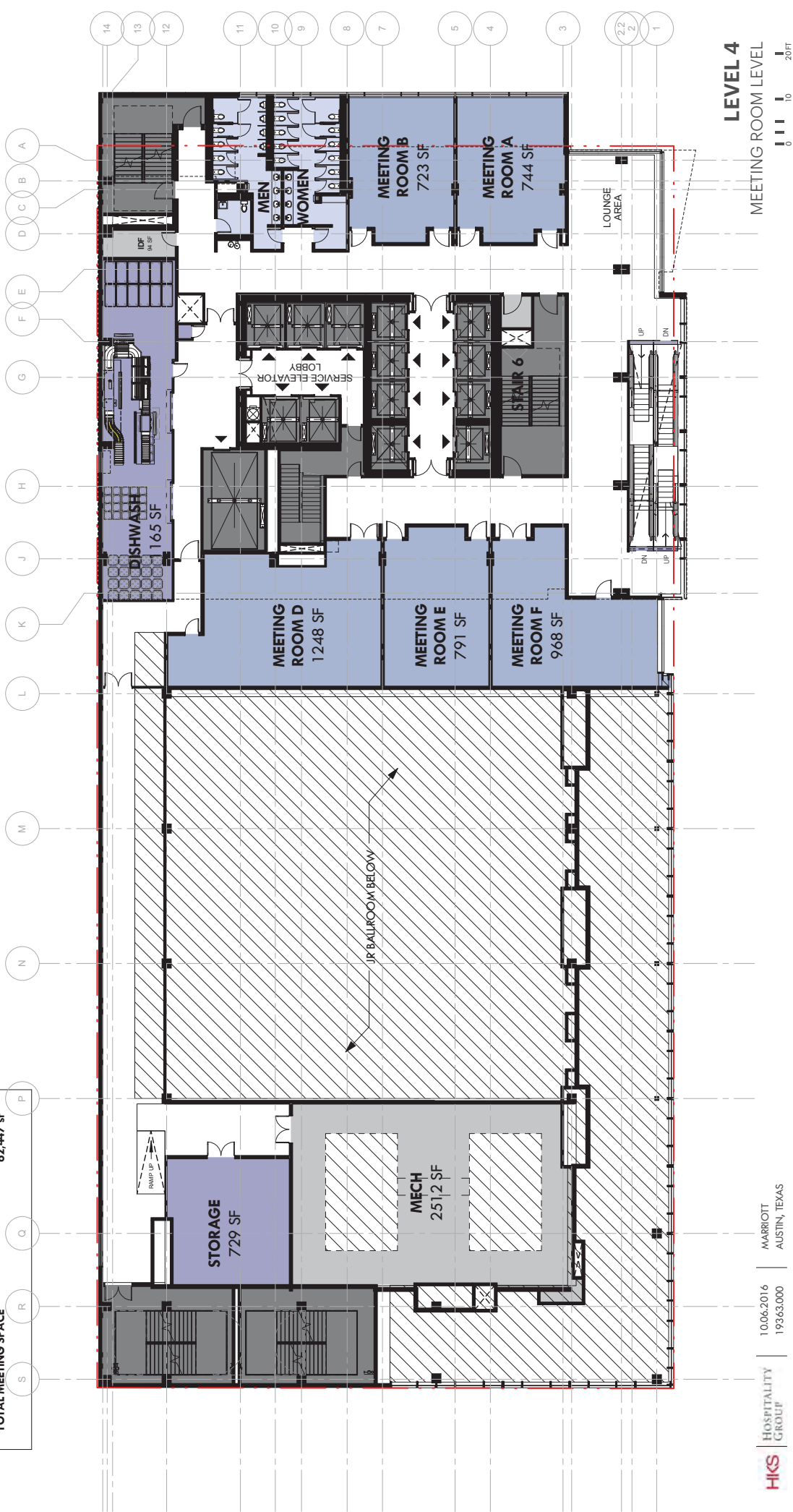


LEVEL 2
EXHIBIT HALL

MEETING ROOM SUMMARY		
MARRIOTT	Clear Dimensions	Area
GRAND BALLROOM	86'-3" x 160'-0"	14,008 sf
JUNIOR BALLROOM	86'-3" x 160'-0"	14,007 sf
EXHIBIT HALL		207,627 sf
MEETING ROOMS		13,277 sf
TOTAL MEETING SPACE		62,447 sf



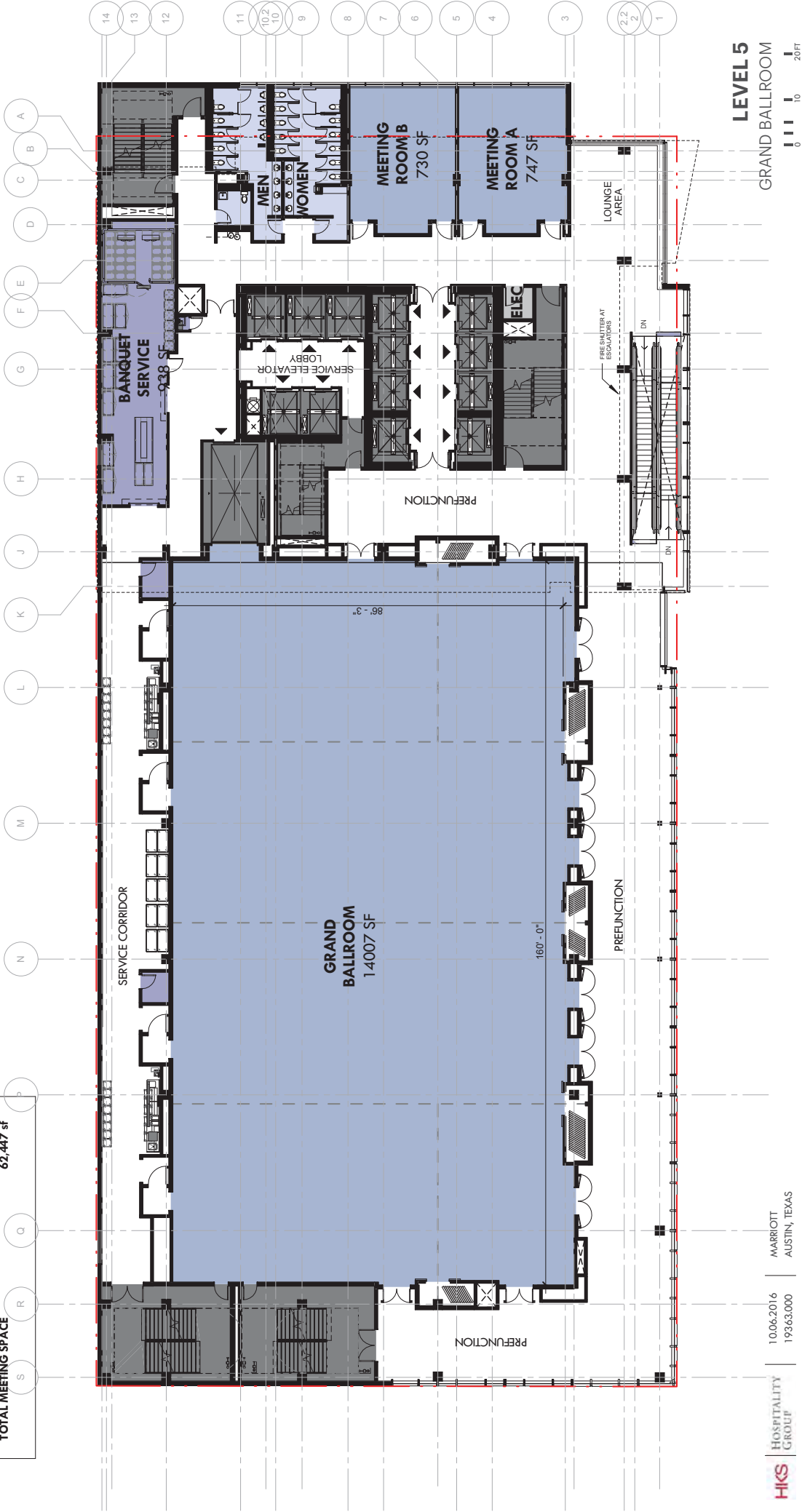
MEETING ROOM SUMMARY		
MARRIOTT	Clear Dimensions	Area
GRAND BALLROOM	86'-3" x 160'-0"	14,008 sf
JUNIOR BALLROOM	86'-3" x 160'-0"	14,007 sf
EXHIBIT HALL		20,767 sf
MEETING ROOMS		13,277sf
TOTAL MEETING SPACE		62,447 sf



MEETING ROOM SUMMARY

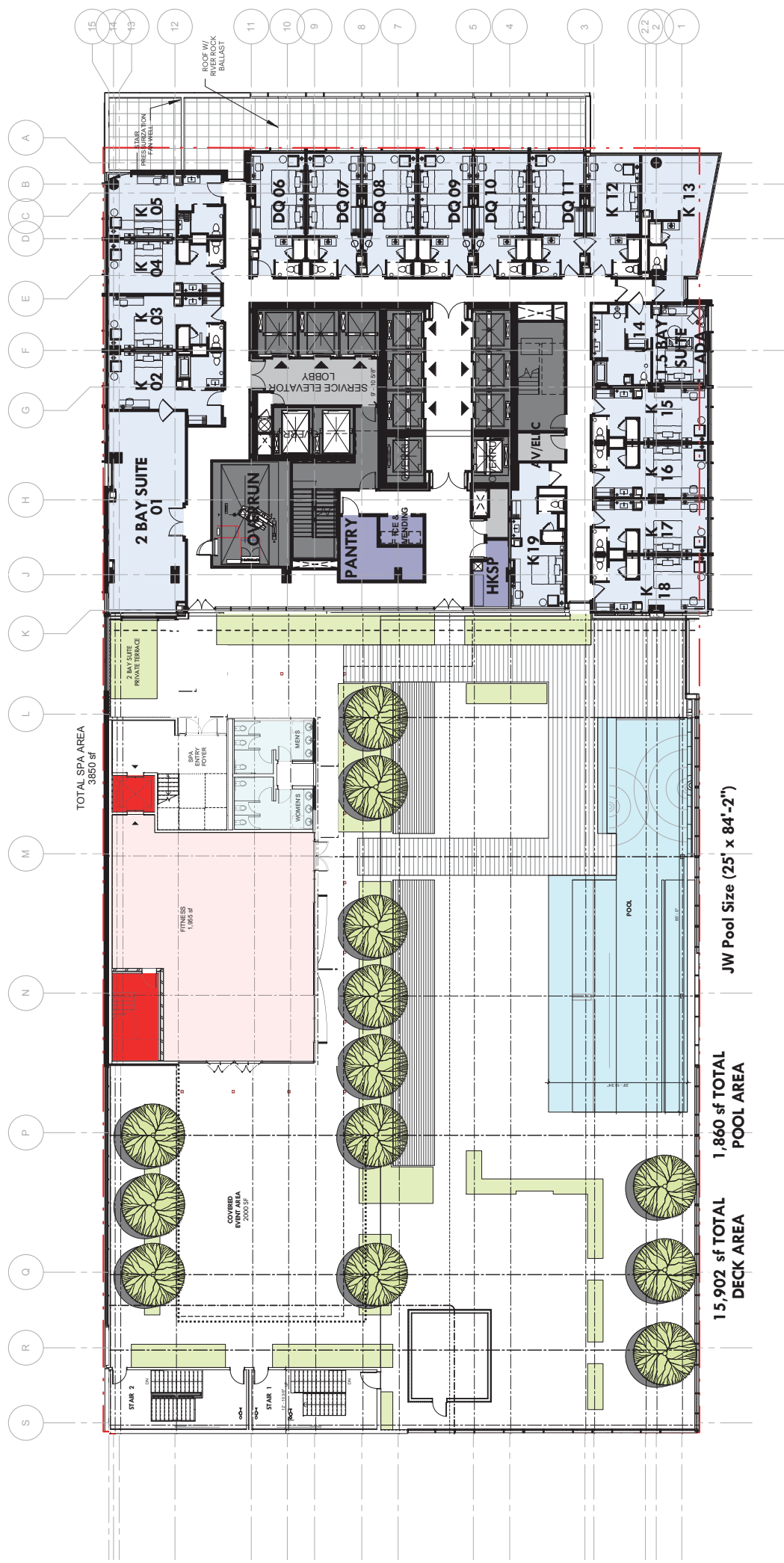
MARriott	Clear Dimensions	Area
GRAND BALLROOM	86'-3" x 160'-0"	14,008 sf
JUNIOR BALLROOM	86'-3" x 160'-0"	14,007 sf
EXHIBIT HALL		20,767 sf
MEETING ROOMS		13,277sf

TOTAL MEETING SPACE 62,447 sf



MEETING ROOM SUMMARY		
MARRIOTT	Clear Dimensions	Area
GRAND BALLROOM	86'-3" x 160'-0"	14,008 sf
JUNIOR BALLROOM	86'-3" x 160'-0"	14,007 sf
EXHIBIT HALL		20,767 sf
MEETING ROOMS		13,277sf
TOTAL MEETING SPACE		62,447 sf





GUESTROOM MIX SUMMARY

MARRIOTT	Module Dimensions	Area	Keys	Mix
Kings	11'-6" x 24'-9"	285 SF	306	50%
Double Queens	11'-6" x 26'-6"	305 SF	282	46%
1.5 Bay Suites	17'-6" x 24'-9"	424 SF	22	4%
Two Bay Suites	23'-0" x 26'-6"	606 SF	1	.2%
Presidential Suite	50'-3" x 24'-9"	1222 SF	2	.3%

TOTAL KEYS 613



LEVELS 8-28

TYPICAL GUESTROOM FLOOR PLAN



MARRIOTT	Module Dimensions	Area	Keys	Mix
Kings	11'-6" x 24'-9"	285 SF	386	50%
Double Queens	11'-6" x 26'-6"	305 SF	282	46%
1.5 Bay Suites	17'-6" x 24'-9"	424 SF	22	4%
Two Bay Suites	23'-0" x 26'-6"	606 SF	1	2%
Presidential Suite	50'-3" x 24'-9"	1222 SF	2	3%

613



AL SUITE LEVEL

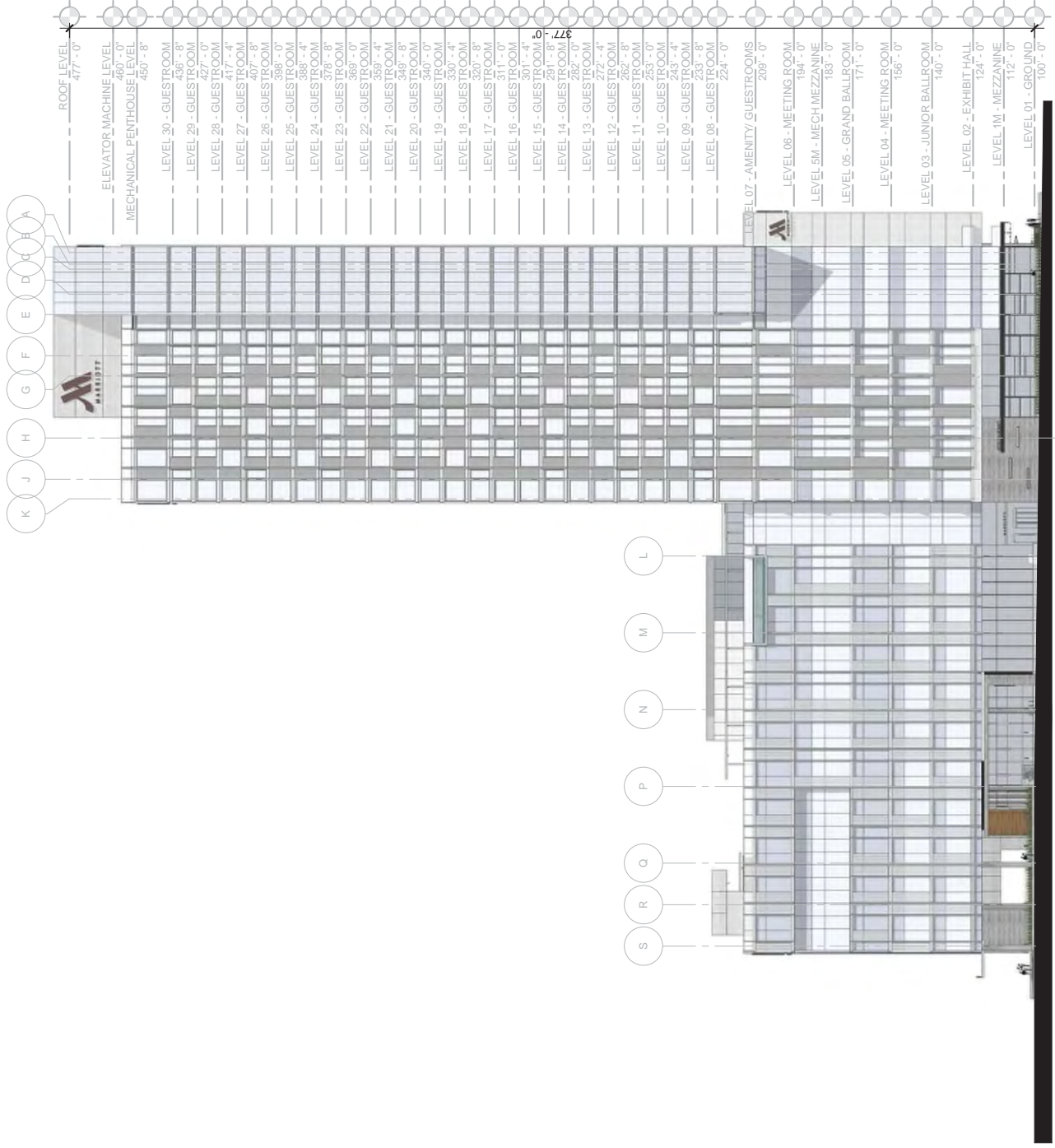
0 10 20 FT



VIEW DOWN CESAR CHAVEZ



VIEW EAST ALONG
CESAR CHAVEZ



K J H G F E D C B A

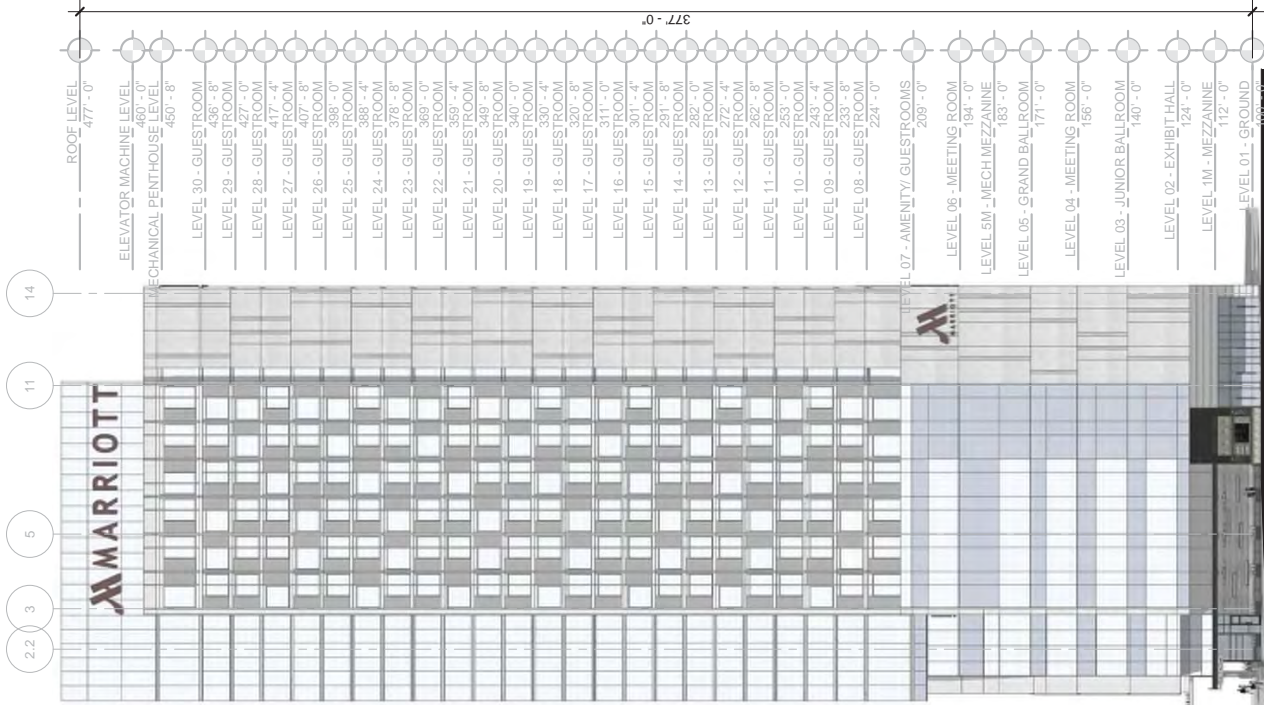
S R Q P N M L

ROOF LEVEL 477'-0"
ELEVATOR MACHINE LEVEL 460'-0"
MECHANICAL PENTHOUSE LEVEL 450'-8"
LEVEL 30 - GUESTROOM 436'-8"
LEVEL 29 - GUESTROOM 427'-0"
LEVEL 28 - GUESTROOM 417'-4"
LEVEL 27 - GUESTROOM 407'-8"
LEVEL 26 - GUESTROOM 398'-0"
LEVEL 25 - GUESTROOM 388'-4"
LEVEL 24 - GUESTROOM 379'-8"
LEVEL 23 - GUESTROOM 369'-0"
LEVEL 22 - GUESTROOM 359'-4"
LEVEL 21 - GUESTROOM 349'-8"
LEVEL 20 - GUESTROOM 340'-0"
LEVEL 19 - GUESTROOM 330'-4"
LEVEL 18 - GUESTROOM 320'-8"
LEVEL 17 - GUESTROOM 311'-0"
LEVEL 16 - GUESTROOM 301'-4"
LEVEL 15 - GUESTROOM 291'-8"
LEVEL 14 - GUESTROOM 282'-0"
LEVEL 13 - GUESTROOM 272'-4"
LEVEL 12 - GUESTROOM 262'-8"
LEVEL 11 - GUESTROOM 253'-0"
LEVEL 10 - GUESTROOM 243'-4"
LEVEL 09 - GUESTROOM 233'-8"
LEVEL 08 - GUESTROOM 224'-0"
LEVEL 07 - AMENITY/ GUESTROOMS 209'-0"
LEVEL 06 - MEETING ROOM 194'-0"
LEVEL 5M - MECH MEZZANINE 183'-0"
LEVEL 05 - GRAND BALLROOM 171'-0"
LEVEL 04 - MEETING ROOM 156'-0"
LEVEL 03 - JUNIOR BALLROOM 140'-0"
LEVEL 02 - EXHIBIT HALL 124'-0"
LEVEL 1M - MEZZANINE 112'-0"
LEVEL 01 - GROUND 100'-0"

SOUTH ELEVATION



FAR CALCULATIONS
524,628 SF TOTAL GROSS BUILDING AREA
35,411 SF TOTAL SITE AREA
FAR - AS DESIGNED - 14.82

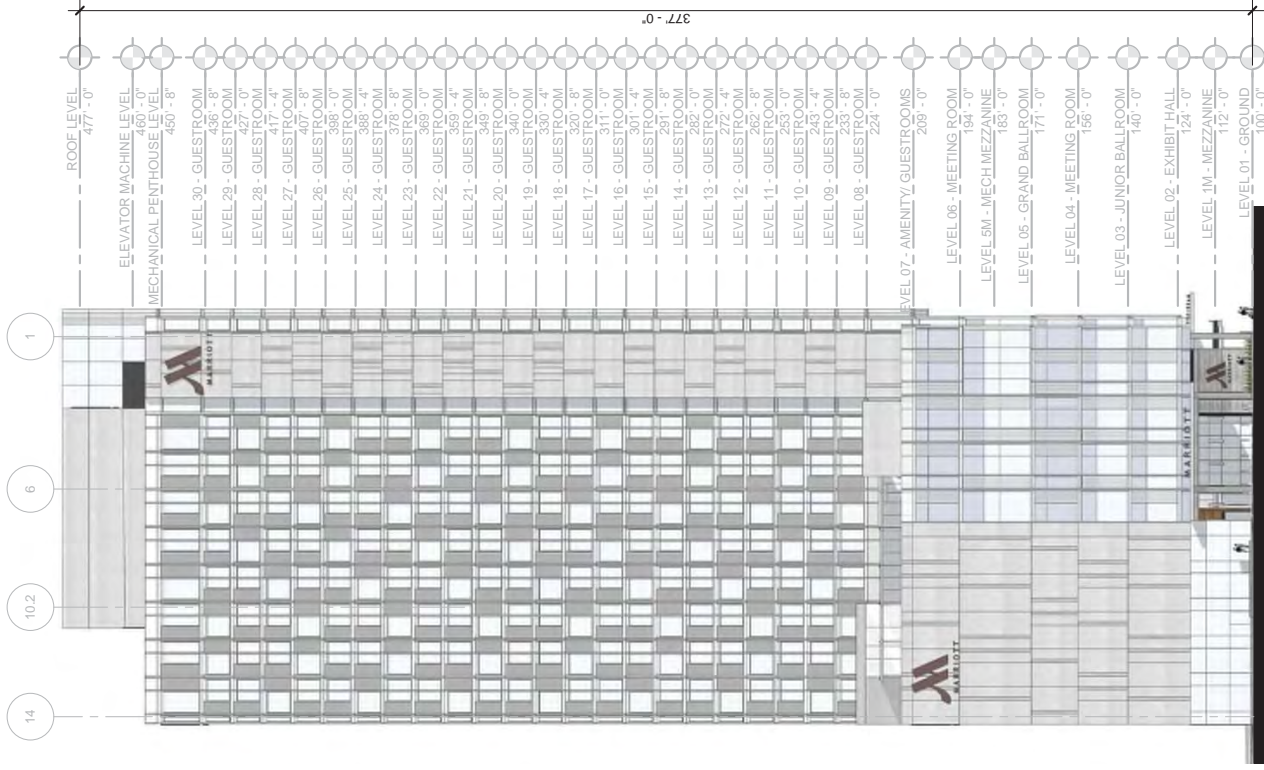


EAST ELEVATION

10.05.2016
19363.000
MARriott
AUSTIN, TEXAS

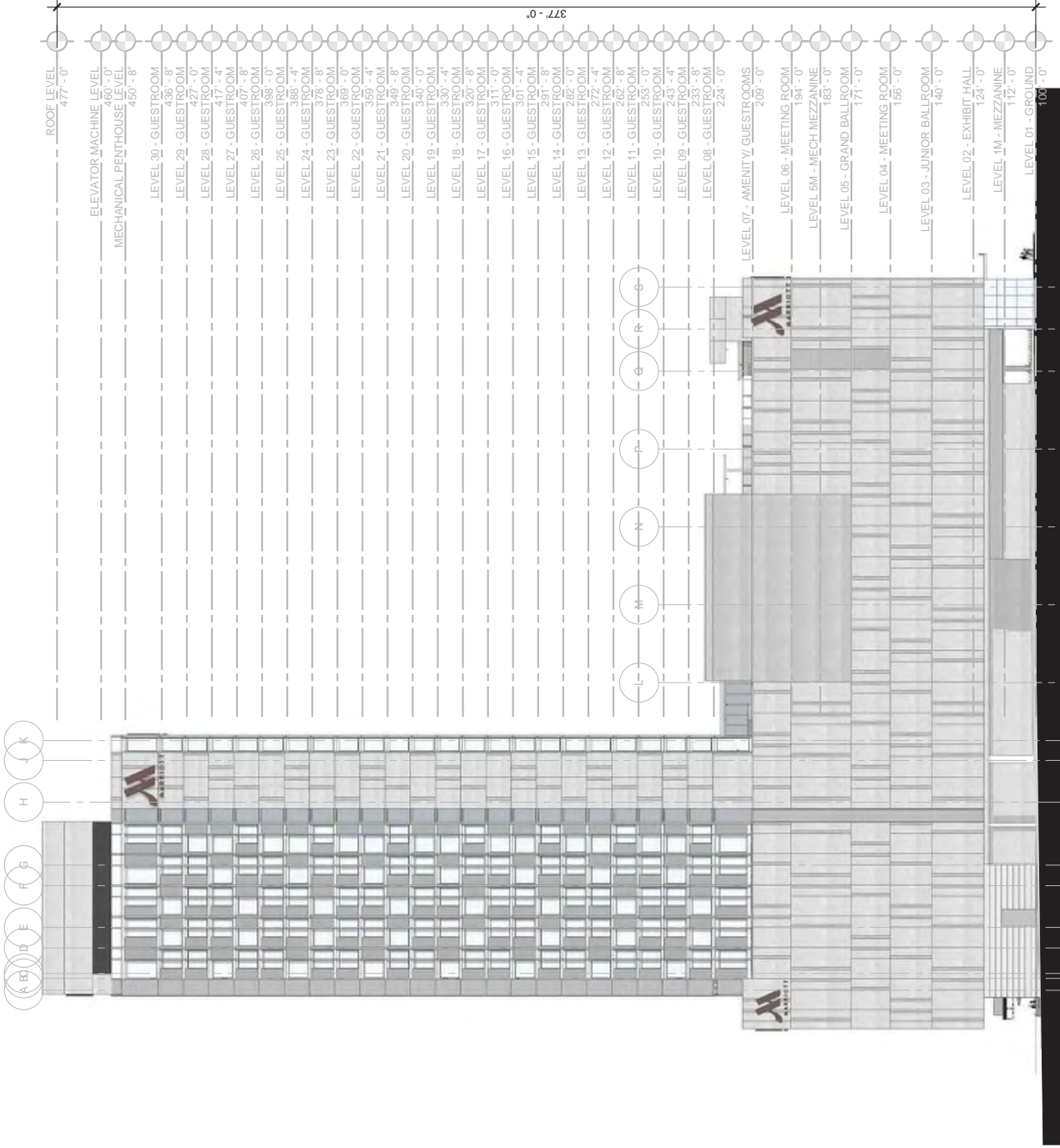
HKS | HOSPITALITY
GROUP

FAR CALCULATIONS
524,628 SF TOTAL GROSS BUILDING AREA
35,411 SF TOTAL SITE AREA
FAR - AS DESIGNED - 14.82



WEST ELEVATION

EAST & WEST ELEVATIONS
0 20 40 FT



NORTH ELEVATION

0 20 40 FT

FAR CALCULATIONS

524,628 SF TOTAL GROSS BUILDING AREA
35,411 SF TOTAL SITE AREA

FAR - AS DESIGNED - 14.82

10.06.2016
19363.000

MARROTT
AUSTIN, TEXAS

HKS
HOSPITALITY
GROUP



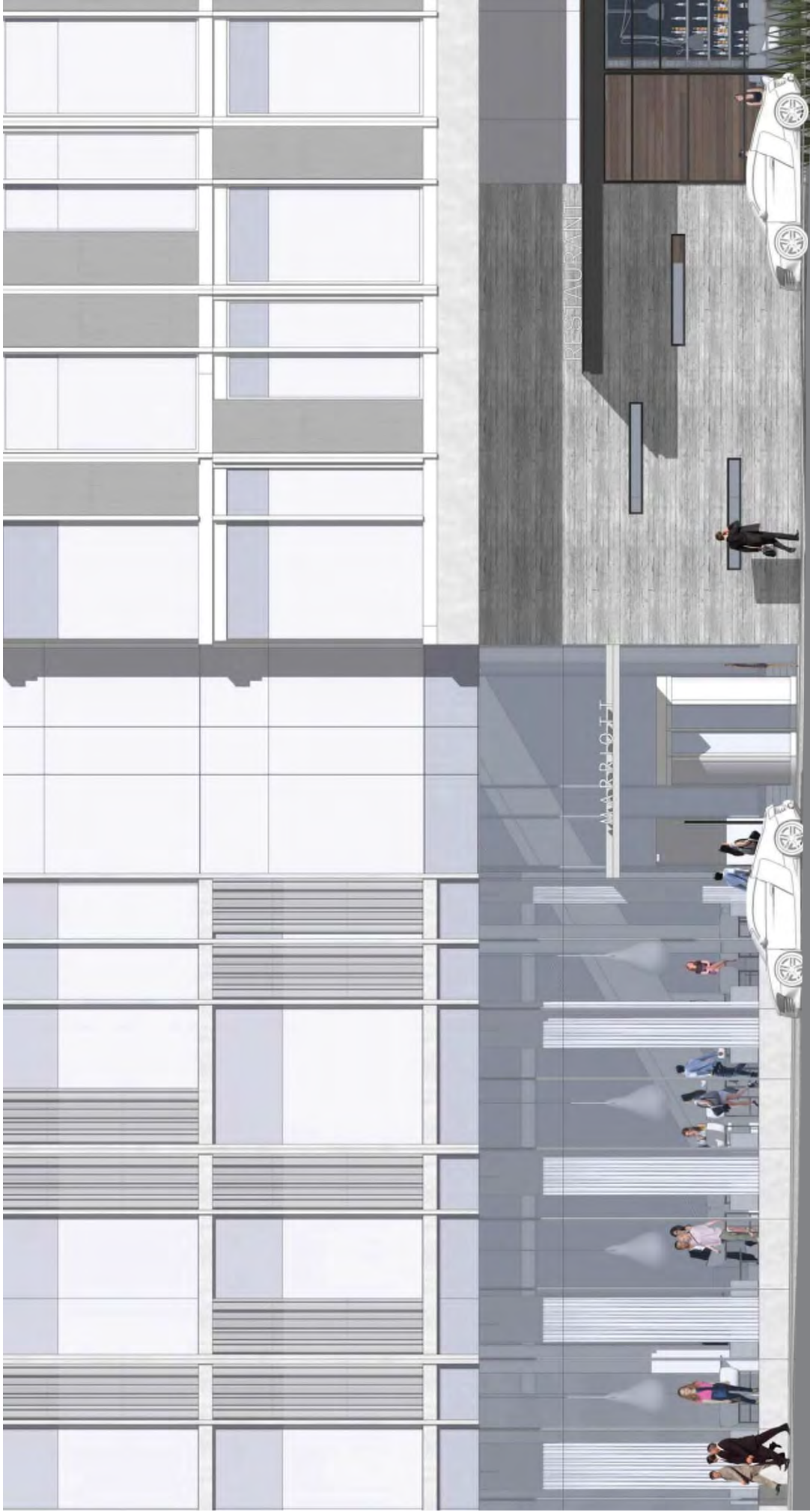
PORTE COCHERE
ELEVATION



PORTE COCHERE - ENTRY
AT SAN JACINTO



PORTE COCHERE - ENTRY



CESAR CHAVEZ ENTRY



3-MEAL CORNER



TACO BAR



AUSTIN ENERGY GREEN BUILDING

Letter of Intent

This Letter of Intent demonstrates the intent of the project owner or an authorized representative to complete the necessary requirements to achieve an Austin Energy Green Building (AEGB) minimum TWO Star Rating for a development / project that requires this rating.

Project Name: Cesar Chavez Marriott Hotel

Project Address: Cesar Chavez and San Jacinto, Austin, Texas, 78701

This Letter of Intent must be included with the Administrative Site Plan application for all projects requiring an AEGB Rating. Signing this letter demonstrates knowledge of this requirement and the process necessary to achieve an AEGB Rating. For best results, meet with an AEGB representative early in the design process. To achieve an AEGB Rating:

- I. Submit a **Project Application in the AEGB Online Rating System** prior to or within Schematic Design Phase. Sign and upload the Letter of Intent to the Documents tab. Complete "Team" tab.
- II. Submit a completed and signed **AEGB Conditional Approval** with the Building Permit application. AEGB will issue a Conditional Approval upon satisfactory review of the project's construction documents, including plans, specifications, mechanical plans, Manual J calculation (applicable for multifamily and single family projects), and the project's AEGB Rating Worksheet.
- III. Schedule AEGB inspections (separate from City of Austin inspections) of the project with the AEGB representative
 - a) After interior mechanical equipment has been installed and prior to installation of sheetrock.
 - b) At substantial completion of construction.
- IV. Submit a completed and signed **AEGB Final Approval** to receive the Certificate of Occupancy for this project. AEGB will issue a Final Approval upon substantial completion of the project and satisfactory fulfillment of the AEGB Rating.

This Letter of Intent is entered into by the parties, acting through their duly authorized representatives, effective as of the later of two signature dates entered below:

PARTICIPANT:

Name: Steven I. Handler

Signature: Steven I. Handler

Title: VP of Manager

Phone Number: 214-472-2900

Date: 10/5/14

AUSTIN ENERGY GREEN BUILDING:

Name: Jeff Wacker

Signature: Jeff Wacker

Title: AEGB Representative

Phone Number: 512.482.5448

Date: 9/13/14

BASIC REQUIREMENTS									
Prereq 1	Plans & Specifications								Required
Prereq 2	Current Codes & Regulations								Required
Prereq 3	Building Systems Commissioning								Required
Prereq 4	Building Energy Performance								Required
Prereq 5	Outdoor Water Use Reduction								Required
Prereq 6	Indoor Water Use Reduction								Required
Prereq 7	Low-Emitting Materials - Interior Paints & Coatings								Required
Prereq 8	Storage & Collection of Recyclables								Required
Prereq 9	Construction Waste Management								Required
BR TOTAL									(1 STAR)

Team									
Credit 1	Integrated Project Design								2
TE TOTAL									(2 Points)

SUSTAINABLE SITES									
Credit 1	Environmental Sensitivity								2
Credit 2	Desired Development								2
Credit 3	Density								2
Credit 4	Diverse & Walkable Communities								1
Credit 5	Brownfield Redevelopment								1
Credit 6	Site Specific Design								1
Credit 7	Public Transportation								1
Credit 8	Bicycle Use								1
Credit 9	Parking Capacity								1
Credit 10	Electric Vehicle Charging Station								1
Credit 11	Protect & Restore Habitat								1
Credit 12	Beneficial Open Space								1
Credit 13	Access to Local & Regional Produce								1
Credit 14	Heat Island Reduction								1
Credit 15	Light Pollution Reduction								1
Credit 16	Integrated Pest Management								1
SS TOTAL									(21 Points)

ENERGY & ATMOSPHERE									
Building Energy Performance									
Credit 1	6% = 1 point	18% = 7 points	35% = 13 points						1-16 possible
	8% = 2 points	20% = 8 points	40% = 14 points						
	10% = 3 points	23% = 9 points	45% = 15 points						
	12% = 4 points	26% = 10 points	50% = 16 points						
	14% = 5 points	29% = 11 points							
	16% = 6 points	32% = 12 points							
Renewables									
Credit 2	1% = 1 point	4% = 2 points	7% = 3 points	10% = 4 points					1-4 possible
Additional Commissioning									
Credit 3									1-3 possible
Credit 4	Advanced Energy Metering								1
Credit 5	Demand Response								2
Credit 6	Green Energy								2
Credit 7	District Cooling								1
EA TOTAL									(28 Points)

WATER EFFICIENCY									
Outdoor Water Use Reduction									
Credit 1	50% = 1 point	75% = 2 points	100% = 3 points						1-3 possible
Building Water Use Reduction									
Credit 2	10% = 1 point	15% = 2 points	20% = 3 points						1-6 possible
	25% = 4 point	30% = 5 points	35% = 6 points						
Process Water Use Reduction									
Credit 3									1-2 possible
Stormwater Management									
Credit 3	Stormwater quality = 1 point	Stormwater quantity = 1 point							1-2 possible
WE TOTAL									(13 Points)

INDOOR ENVIRONMENTAL QUALITY									
Credit 1	Indoor Chemical & Pollutant Sources								1
Credit 2	Green Housekeeping								1
Credit 3	Daylighting - Design								1
Credit 4	Daylighting - Controls								1
Credit 5	Views to the Outside								1
Credit 6	Individual Controllability								1
Credit 7	Low-Emitting Materials								1
Credit 8	Moisture Protection								1
Credit 9	Acoustic Quality								1
Credit 10	Outdoor Pollutant Control								1
Credit 11	Construction Indoor Air Quality								1
EQ TOTAL									(15 Points)

MATERIALS & RESOURCES									
Credit 1	Additional Construction Waste Management (75% weight)								1
Credit 2	Building Materials Use Reduction								1-3 possible
Credit 3	Sustainably Sourced Material								1-6 possible
Credit 6	Certified Wood								1
Credit 7	PVC and Phthalate Free								1
MR TOTAL									(12 Points)

EDUCATION & EQUITY									
Credit 1	Educational Outreach								2
Credit 2	Construction Worker Equity								1
ED TOTAL									(3 Points)

INNOVATION & DESIGN PROCESS									
Credit 1.1	Innovation in Design								1
Credit 1.2	Innovation in Design								1
Credit 1.3	Innovation in Design								1
Credit 1.4	Innovation in Design								1
Credit 1.5	Innovation in Design								1
ID TOTAL									(5 Points)

PROJECT TOTALS									
1 Star:	Basic Req								2 Star: 35-44 Points
4 Star:	55-74 Points								5 Star: 75+ Points
3 Star: 45-54 Points									AEGB
									(100 Points)



City of Austin

P.O. Box 1088, Austin, TX 78767
www.cityofaustin.org/housing

Neighborhood Housing and Community Development Department

October 10, 2016

Marriott Hotel at Cesar Chavez – 304 East Cesar Chavez Street (SP-2016-0300C) Rainey Street Subdistrict and Downtown Density Bonus Program Certification Letter

TO WHOM IT MAY CONCERN:

Steven I Handler, Vice President of White Lodging Services Corporation, Manager of Austin 20 Hotel, LLC (contact: Matt Frankiewicz; phone: 219.472.2985; email: mfrankiewicz@whitelodging.com) is planning to develop a 613 room hotel, under site plan SP-2016-0300C at 304 East Cesar Chavez Street, Austin TX 78701. The project is located within Downtown Density Bonus Programs that is located in the City's Land Development Code, 25-2-586. This project is submitting for a density bonus through the City's Downtown Density Bonus Program. This project does not have to meet any Affordable Housing Community Benefits requirements since the project does not consist of any residential units.

Please contact me by phone 512.974.3128 or by email at Sandra.harkins@austintexas.gov if you need additional information.

Sincerely

Sandra Harkins, Project Coordinator
Neighborhood Housing and Community Development

Cc: Regina Copic, NHCD
Anne Milne PZD

A. PROJECT INFORMATION

Project Name

Marriott Hotel at Cesar Chavez

Project Type:

☐ Infrastructure ☐ City building & site ☐ Density bonus
☒ Private project ☐ Other

Project Location/Address

304 E. Cesar Chavez Street

Applicant

Richard T. Suttle, Jr, Armbrust & Brown, PLLC

Property Owner

South 1/2 Block 8 Venture

Applicant Mailing Address

100 Congress, Suite 1300
Austin, TX 78701

Property Owner Mailing Address

1509 Old West 38th Street
Austin, TX 78731

Applicant Telephone Number

512-435-2300

Property Owner Telephone Number

512-472-3135

Project Start Date

June 2017

Project Completion Date

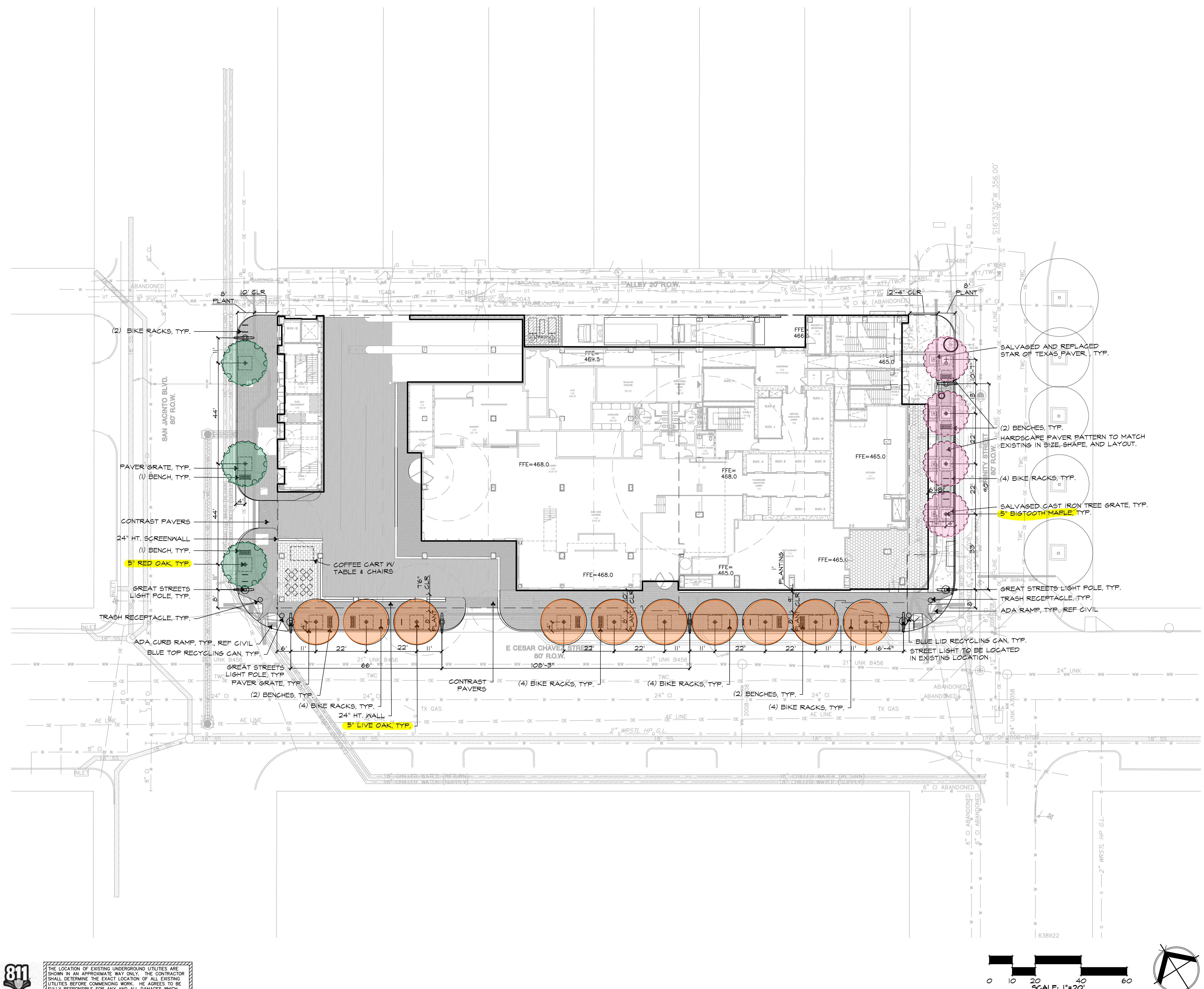
December 2019

Applicant's Architect

HKS
Michael Strohmer, AIA

Applicant's Engineer

Stantec
Joe Isaja, PE



LANDSCAPE CERTIFICATION BLOCK
THE PLAN MEETS THE REQUIREMENTS OF LDC 25-2, ARTICLE 9
OF THE LAND DEVELOPMENT CODE. 25-2-983(A), ECM 2.4.8

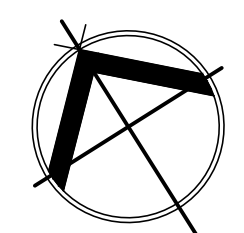
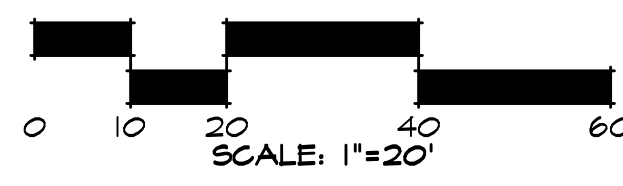
ZACHRY HUNTER DATE

FOR CITY USE ONLY:

SITE PLAN RELEASE	
FILE NUMBER:	EXPIRATION DATE:
CASE MANAGER:	APPLICATION DATE:
APPROVED ADMINISTRATIVELY ON:	
APPROVED BY PLANNING COMMISSION ON:	
APPROVED BY CITY COUNCIL ON:	
under Section _____ Of Chapter _____ Of The Austin City Code.	
Director, Development Services Department	
DATE OF RELEASE:	Zoning:
Rev. 1	Correction 1
Rev. 2	Correction 2
Rev. 3	Correction 3
RELEASE OF THIS APPLICATION DOES NOT CONSTITUTE A VERIFICATION OF ALL DATA, INFORMATION AND CALCULATIONS SUPPLIED BY THE APPLICANT. THE ENGINEER OF RECORD IS SOLELY RESPONSIBLE FOR THE COMPLETENESS, ACCURACY AND ADEQUACY OF HIS/HER SUBMITTAL, WHETHER OR NOT THE APPLICATION IS REVIEWED FOR CODE COMPLIANCE BY CITY ENGINEERS.	

811
Know what's below.
Call before you dig.

THE LOCATION OF EXISTING UNDERGROUND UTILITIES ARE SHOWN IN AN APPROXIMATE WAY ONLY. THE CONTRACTOR SHALL DETERMINE THE EXACT LOCATION OF ALL EXISTING UTILITIES BEFORE COMMENCING WORK. HE AGREES TO BE FULLY RESPONSIBLE FOR ANY AND ALL DAMAGES WHICH MIGHT BE OCCASIONED BY HIS FAILURE TO EXACTLY LOCATE AND PRESERVE ANY AND ALL UNDERGROUND UTILITIES.



Stantec

221 West Sixth Street, Suite 600
Austin, Texas 78701
Tel. (512) 328-0011 Fax (512) 328-0325
TBPE # F-6324 TBPLS # F-10194230
Copyright © 2017

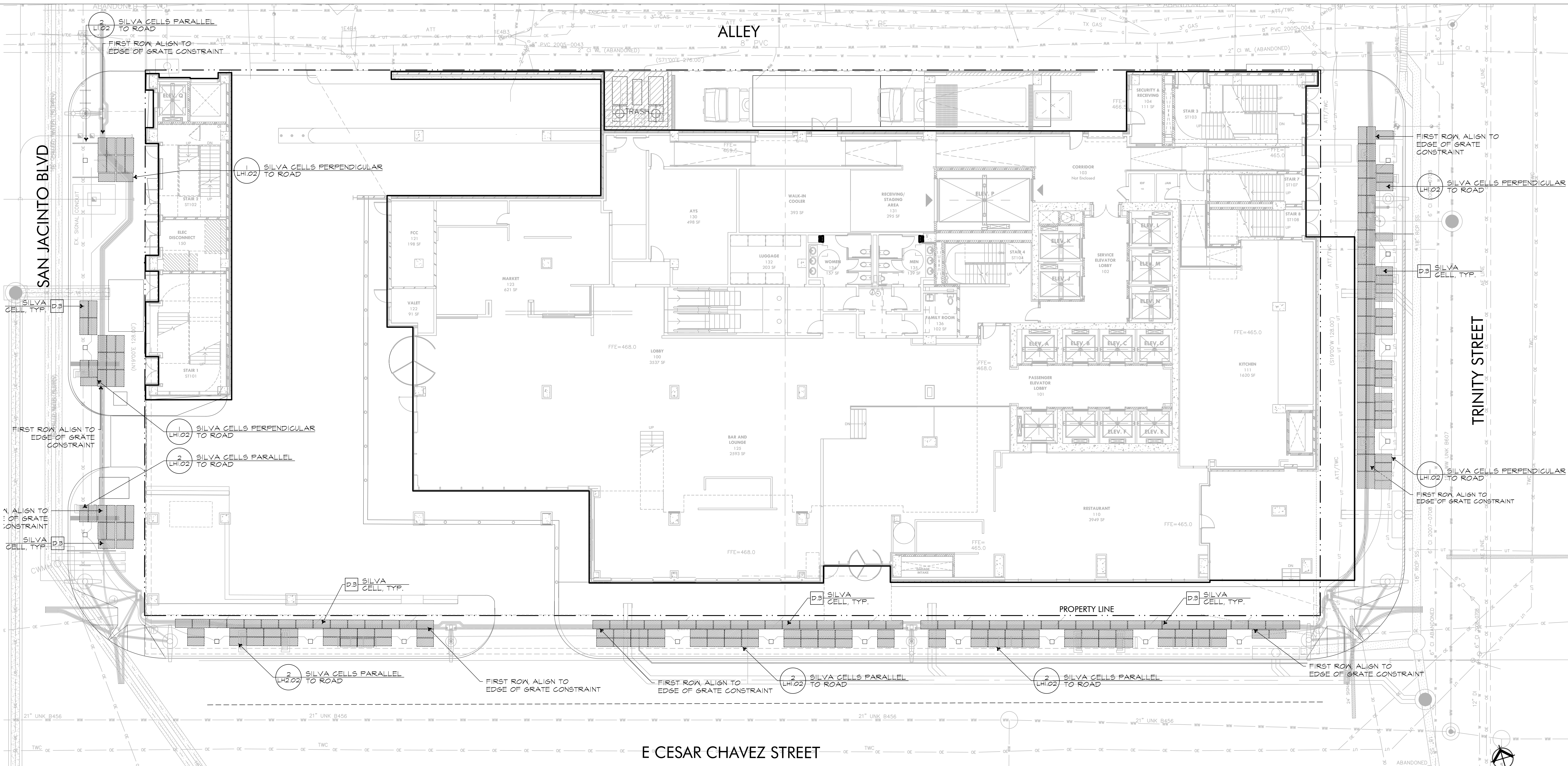
Seal of the City of Austin

04/18/2017

LANDSCAPE CITY SUBMITTAL
PLAN

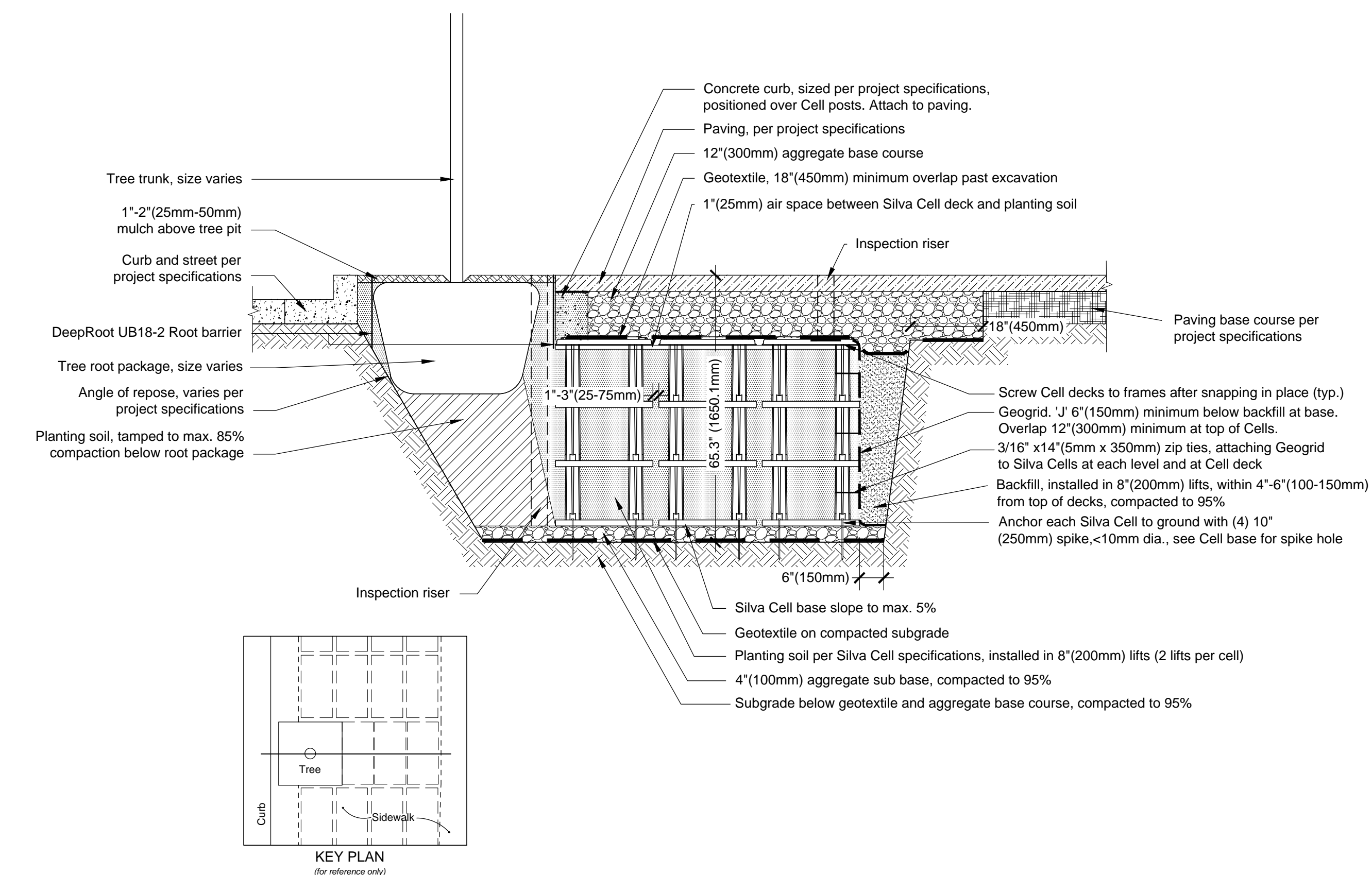
MARRIOTT HOTEL
CESAR CHAVEZ
AUSTIN, TEXAS 78701

DRAWN BY:	CT
DESIGNED BY:	AH
QA / QC:	AH
PROJECT NO.:	222010160
SHEET 35 OF 39	



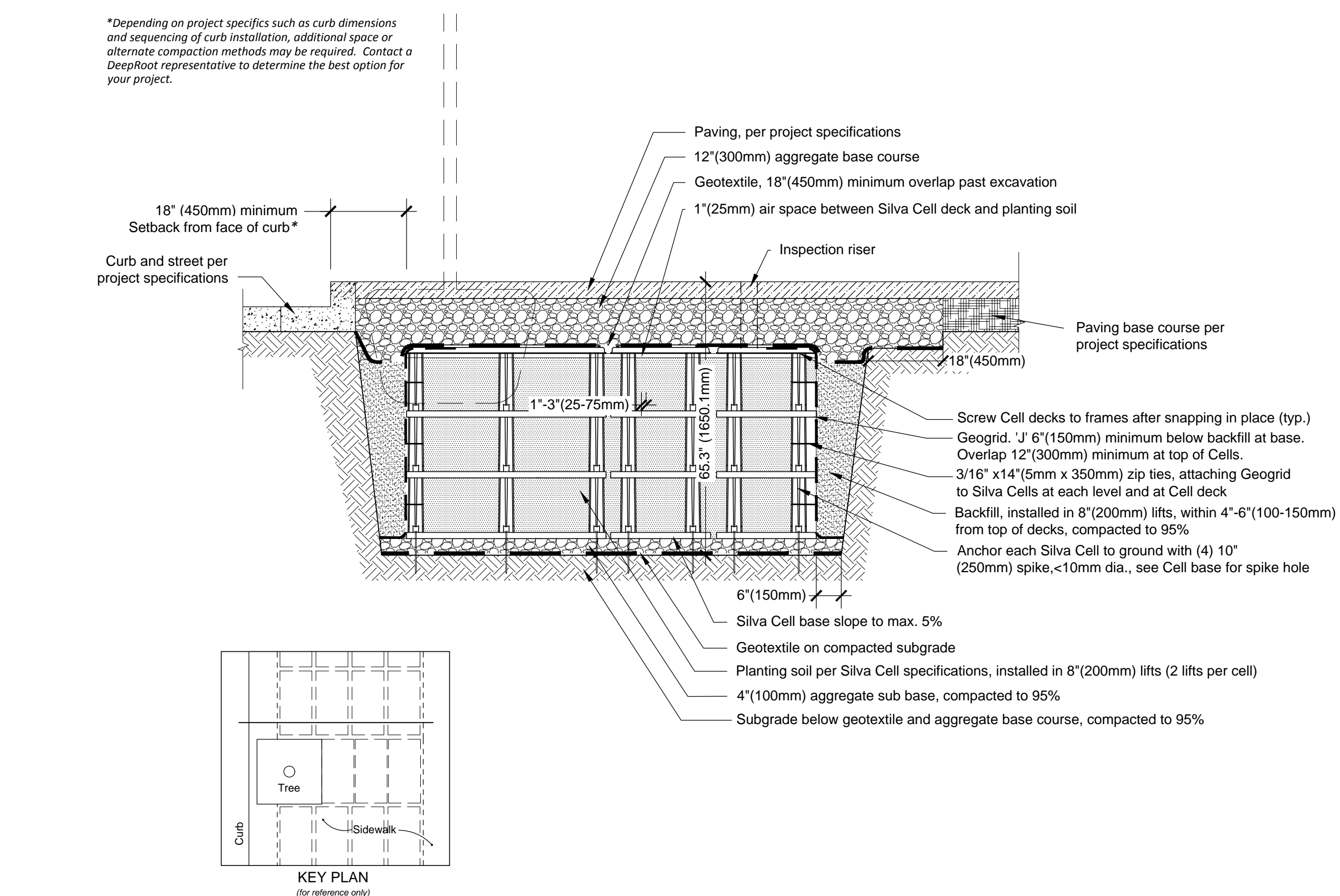
3 SILVA CELL LAYOUT PLAN

SCALE: 1"=10'-0"



2 SILVA CELLS @ PARALLEL TO CURB PLAN

SCALE: N.T.S.



1 SILVA CELLS - PERPENDICULAR TO CURB PLAN

SCALE: N.T.S.

SILVA CELLS				
STREET	TOTAL FRAMES	TOTAL DECKS	TOTAL TREES	CF / TREE
TRINITY	195	65	4	488
SAN JACINTO	114	38	3	380
CESAR CHAVEZ	343	131	10	343
PROJECT TOTAL FRAMES				702
PROJECT TOTAL DECKS				234

Silva Cell Estimating Worksheet Marriott Cesar Chavez

Buyer/Contractor acknowledges that DeepRoot Green Infrastructure, LLC is providing an Estimating Worksheet as an optional tool for use by Buyer/Contractor, that Buyer/Contractor is free to use or not use this tool, or any other tool or information of its choosing, and that Buyer/Contractor, not DeepRoot Green Infrastructure, LLC, is solely responsible for the quantity of materials and product that they estimate and order for this Project. The soil compaction densities and depths of placement of soil lifts and aggregate layers specified are for the support of the Silva Cell product alone and any higher standard specified by the geotechnical, civil or structural engineers on the Project should be followed.

ITEM	QUANTITY	UNIT PRICE	TOTAL
Mobilization	1.00 x	\$ 2,000.00 =	\$ 2,000.00
Move equipment and materials to and from site			
Excavation	cy 245.00 x	\$ 10.00 =	\$ 2,450.00
(width of Silva Cell area + 1.5 ft oversize on either side) x (length of Silva cell area + 1.5 Ft of oversize at either end) x depth			
Depths:			
1x system = Pavement thickness + aggregate thickness + 21"			
2x system = Pavement thickness + aggregate thickness + 35"			
3x system = Pavement thickness + aggregate thickness + 47"			
Geotextile fabric (2x)	sf 3500.00 x	\$ 0.10 =	\$ 350.00
One layer goes below sub base aggregate.			
One layer goes over the Silva Cell decks, just below the aggregate base for the pavement			
Width x length of the Silva Cell area (including oversizing) x 2			
Sub base aggregate	cy 85.00 x	\$ 32.00 =	\$ 2,720.00
The 4" thick layer of aggregate at the bottom of the excavation that the lowest layer of Silva Cells rests on			
Compacted to 95 % density.			
Width x length of the Silva Cell area (including oversizing) x 4" divided by 27 = cubic yards			
Silva Cell bases (included in DeepRoot quote)	ea 234.00 x	= \$	54,288.00
24" x 48" base units.			
Silva Cell anchoring assembly (included in DeepRoot quote)	x	=	
Threaded pin + crossbar. Use 2 per each base unit			
Silva Cell posts (included in DeepRoot quote)	x	=	
Round vertical pieces that span between the bases and decks. 6 posts per base unit*			
They come in 2 different lengths based on the height of system.			
3x* (uses a combined 1x plus 2x leg. Requires 6-1X legs and 6 -2X legs per base unit)			
Silva Cell decks (included in DeepRoot quote)	x	=	
24" x 48" top pieces that attach to posts. Used on top layer only (1 deck per base unit).			
Strongbacks (included in DeepRoot quote)	20.00 x	= \$	1,040.00
Temporary plastic forms that stabilize the posts during placement of the soil (removed as the decks are installed).			
Geogrid	x	=	
Wrapped vertically around the perimeter of the Silva Cell area .			
Separates the soil inside the Silva Cell system from the surrounding compacted soils.			
(length of perimeter around cells) x (height of cells + 6" overlap at bottom and 12" overlap at top)			
1x = length around perimeter x 36"			
2x = length around perimeter x 48"			
3x = length around perimeter x 72"			
Planting soil	cy 245.00 x	\$ 35.00 =	\$ 8,575.00
Specified soil placed inside of the Silva Cells.			
Placed in approximately 12" lifts and compacted by walking around over it (approximately 80% density)			
Each frame holds approximately 10 cu ft of soil.			
(quantity of frames x 10) divided by 27 = cu yds of planting soil required			
Backfilling and Compacting	cy 245.00 x	\$ 10.00 =	\$ 2,450.00
Backfilling between the outside perimeter of the Silva Cells and the walls of the excavated area with compactable soil			
Place compactable soil in lifts and compact to 95% density or to the specified density for hardscape areas whichever is greater.			
Soil may be excess form the excavation provided it can be compacted to the required density and that no other material is specified			
Inspection riser	17.00 x	\$ 10.00 =	\$ 170.00
A vertical pipe installed near each tree opening used for monitoring water levels, adding water, adding fertilizer, etc			
4" plastic pipe with fabric sock and drain holes in the lower 12" and a screw on plastic cap on top			
Root Barrier (included in DeepRoot quote)	x	=	
Plastic panels that slide together to form a circle inside of the tree opening. Installed when the trees are planted.			
Prevents tree roots from growing directly under the pavement by guiding them down to the soil inside the Silva Cells.			
Items That May Or May Not Be The Responsibility Of The Silva Cell Contractor			
Aggregate base for pavement	x	=	
The layer of aggregate placed over the top of the Silva Cells or directly below the pavement surface.			
Sub surface drainage pipe	x	=	
A perforated plastic pipe or weeping pipe installed at the bottom of the Silva Cell system and connected to the storm sewer			
Irrigation piping	x	=	
Piping for either a pressurized or passive irrigation system looped through the top layer of Silva Cells just below the decks			
TOTAL		\$	74,043.00

DeepRoot Green Infrastructure, LLC
101 Montgomery Street, Suite 2850
San Francisco, CA 94104
(415) 781-9700



MEMORANDUM

Date: May 17, 2017
To: Austin Design Commission
From: Planning & Urban Design Working Group
Subject: Working Group Density Bonus Program review of "The Marriott Hotel at Cesar Chavez" for substantial compliance with the Urban Design Guidelines.
Meeting Date: May 12, 2017; 12:00 pm
Applicant: Richard T. Suttle, Jr.- Armbrust & Brown, PLLC
Architect: HKS

The project location is 304 E. Cesar Chavez Street.

Existing zoning for the project is CBD. The project design includes office, retail uses and public parking. The lot area is 0.42 acres (35,411 sq ft), and the total proposed project area is 204,000 gross sq ft; 62,447 sf meeting space, 9,765 hotel (613 rooms), 2,000 sf fitness.

The FAR for this project is 13:1, above the 8:1 maximum allowance for CBD zoning, so an increase in FAR of 5:1 is being requested.

The proposed building height is 380.5 feet; 31 stories.

Per the Density Bonus Program ordinance, the applicant is required to provide streetscape improvements along all public street frontages consistent with the Great Streets Standards, and the applicant shall commit to a minimum of 2 star Green Building rating. The Mayor and City Council and the Planning & Development Review Director will determine appropriate bonus area in light of community benefits to be provided.

DESIGN COMMISSION WORKING GROUP COMMENTS REGARDING PROJECT'S COMPLIANCE WITH URBAN DESIGN GUIDELINES

AREA WIDE GUIDELINES

1. Create dense development-
The denser development is intended to encourage walkability and reduce reliance on cars, which was not addressed. This project partially complies with this guideline.
2. Create mixed-use development-
Mixed-use is provided although appears it's mainly focused on convention attendees and not the general public. Concern was expressed that the Convention Center "zone" appears to be "dead" when conventions are not scheduled, and this adversely affects the urban vitality of this side of Downtown. This project partially complies with this guideline.
3. Limit development which closes downtown streets-
No street closures planned. Project complies with this guideline
4. Buffer neighborhood edges-
Not applicable to this Project.
5. Incorporate civic art in both public and private development- Project does not comply with this guideline
6. Protect important public views-
Not applicable to this Project.

7. Avoid historical misrepresentations-
Project complies with this guideline
8. Respect adjacent historic buildings-
No adjacent historic buildings; this guideline not applicable to this Project.
9. Acknowledge that rooftops are seen from other buildings and the street-
Not addressed by applicant. Unclear if Project complies with this guideline.
10. Avoid the development of theme environments-
Project complies with this guideline.
11. Recycle existing building stock-
This guideline not applicable to this Project.

GUIDELINES FOR THE PUBLIC STREETScape

1. Protect the pedestrian where the building meets the street-
Continuous overhead protection not provided at sidewalk around entire building. This Project partially complies with this guideline.
2. Minimize curb cuts-
There are 3 curb cuts, one on the alley. While not minimal, it's understood that the 3 curb cuts are intended to spread out parking entry and exiting at different locations. The possible conflict of maintenance operations and the alley curb cut were discussed. This Project partially complies with this guideline.
3. Create a potential for two-way streets-
The applicant understands the possibility of two-way streets, but no special emphasis was presented. This Project partially complies with this guideline.
4. Reinforce pedestrian activity-
Incorporation of Great Streets reinforces existing pedestrian activity but appears it's mainly focused on convention attendees and not the general public. Concern was expressed that the Convention Center "zone" appears to be "dead" when conventions are not scheduled, and this affects the urban vitality of this side of Downtown. This project partially complies with this guideline.
5. Enhance key transit stops-
A transit map was presented, but enhancement of transit stops was not address. This project partially complies with this guideline.
6. Enhance the streetscape-
Incorporation of Great Streets enhances the streetscape but existing trees are not being utilized and are being removed. More input was requested from Great Streets Coordinator and City Arborist. This Project partially complies with this guideline
7. Avoid conflicts between pedestrians and utility equipment-
There are no conflicts. This Project complies with this guideline.
8. Install street trees-
Installation of "new" street trees was proposed but existing street trees are not being utilized and are being removed. Also, a heritage oak in the middle of the lot is being removed, which was of concern. More input was requested from Great Streets Coordinator and City Arborist. This Project partially complies with this guideline
9. Provide pedestrian-scaled lighting-
Pedestrian scaled lighting included with incorporation of Great Streets. This Project complies with this guideline
10. Provide protection from cars/promote curbside parking-
Curbside parking not possible due to incorporation of Great Streets. This Project complies with this guideline
11. Screen mechanical and utility equipment-
This Project complies with this guideline
12. Provide generous street-level windows-
This Project complies with this guideline
13. Install pedestrian-friendly materials at street level-
Incorporation of Great Streets provides pedestrian-friendly materials in ROW. This Project complies with this guideline.

GUIDELINES FOR PLAZAS AND OPEN SPACE

Not applicable.

GUIDELINES FOR BUILDINGS

1. Build to the street-
Incorporates Great Streets so cannot build to street but builds up to sidewalk ROW. This Project complies with this guideline
2. Provide multi-tenant, pedestrian-oriented development at the street level-
Mixed-use is provided although appears it's mainly focused on convention attendees and not the general public. Concern was expressed that the Convention Center "zone" appears to be "dead" when conventions are not scheduled, and this adversely affects the urban vitality of this side of Downtown. This project partially complies with this guideline.
3. Accentuate primary entrances-
This project complies with this guideline.
4. Encourage the inclusion of local character-
This project partially complies with this guideline.
5. Control on-site parking-
Project appears to control on-site parking and underground parking was praised. This project complies with this guideline.
6. Create quality construction-
This Project appears to comply with this guideline.
7. Create buildings with human scale-
This Project appears to comply with this guideline.

OTHER CONCERNS/ISSUES BROUGHT UP BY WORKING GROUP

- Building encroachment into ROW on east about 8' into 20' walk. Concerns about view corridor in street and overhang impacts on street trees.
- Non-active east façade at level 1, 2. Applicant proposes using glass for a more interesting material, not solid wall/door material.
- Non-active façade to west at stairs at level 1. Applicant proposes using glass for stair walls/doors and implementing a branded elevator to provide access to public space at the roof.
- Visibility is limited for vehicle exit onto alley. This could be a safety issue.
- Amount of vehicle space at south west corner at ground level is not pedestrian friendly, so it is important to have the food trailer shown, or notch out corner for a tree and green space.

The Working Group appreciates this opportunity to review and comment on this project and we have determined that this project, as presented, is in substantial compliance with the Urban Design Guidelines .

Respectfully submitted,



Evan Taniguchi, Chair
Planning & Urban Design Working Group of the Design Commission

cc: Working Group Commissioners- David Carroll, Bart Whatley
Katie Mullholland, Executive Liaison to the Design Commission
Anne Milne, Density Bonus Program Coordinator