

**ORDINANCE NO. 20170615-057**

**AN ORDINANCE AMENDING CITY CODE SECTION 12-4-64(D) TO ESTABLISH A MAXIMUM SPEED LIMIT OF 35 MILES PER HOUR ON A PORTION OF METLINK DRIVE.**

**BE IT ORDAINED BY THE CITY COUNCIL OF THE CITY OF AUSTIN:**

**PART 1.** City Code Section 12-4-64(D) (*Table of Speed Limits*) is amended to add:

Metlink Drive from Metro Center Drive to Metropolis Drive. (35 MPH Speed Limit)

**PART 2.** The amendments made in this ordinance are based on the results of a traffic engineering investigation, or "speed study," attached as Exhibit "A".

**PART 3.** The amendments made in this ordinance shall be incorporated in alphabetical order and the existing entries reordered accordingly.

**PART 4.** This ordinance takes effect on June 26, 2017.

**PASSED AND APPROVED**

\_\_\_\_\_, June 15, 2017

§  
§  
§

\_\_\_\_\_  
Steve Adler  
Mayor

**APPROVED:**

\_\_\_\_\_  
Anne L. Morgan  
City Attorney

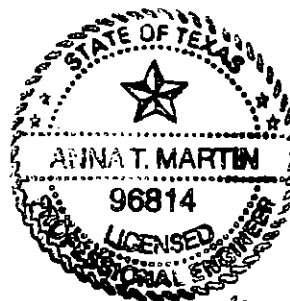
**ATTEST:**

\_\_\_\_\_  
Jannette S. Goodall  
City Clerk

## EXHIBIT A



### MEMORANDUM



*Anna Martin*  
3-10-17

**To:** Traffic Study Files

**From:** Anna Martin, P.E., PTOE, South Austin Engineer  
Traffic Engineering Division  
Austin Transportation Department

**Date:** March 9, 2017

**Subject:** SPEED ZONE INVESTIGATION

**Location:** Metlink Drive – Metro Center Drive to Metropolis Drive

**Date(s) of Previous Investigation:** None

A Traffic Engineering Investigation has been conducted by the Traffic Engineering Division to determine the appropriate speed limit on Metlink Drive from Metro Center Drive to Metropolis Drive. Figure 1 represents a map of the study area. A speed limit had not been established by an engineering study, therefore the prima facie speed limit is 30 miles per hour (mph).

#### Location Conditions:

Metlink Drive is a four-lane roadway that generally runs in a north-south direction between Metro Center Drive and Metropolis Drive. Metlink Drive primarily services an office park with parking lots and seven driveways that have access to Metlink Drive.

Figure 1



## Speed and Volume Data

A speed study was conducted in accordance with the Texas Procedures for Establishing Speed Zones. Speed and volume data were collected in January 2017 to determine the appropriate posted speed limit for Metlink Drive. In 2017, an average of over 2,300 vehicles per day were recorded on Metlink Drive from Metro Center Drive to Metropolis Drive.

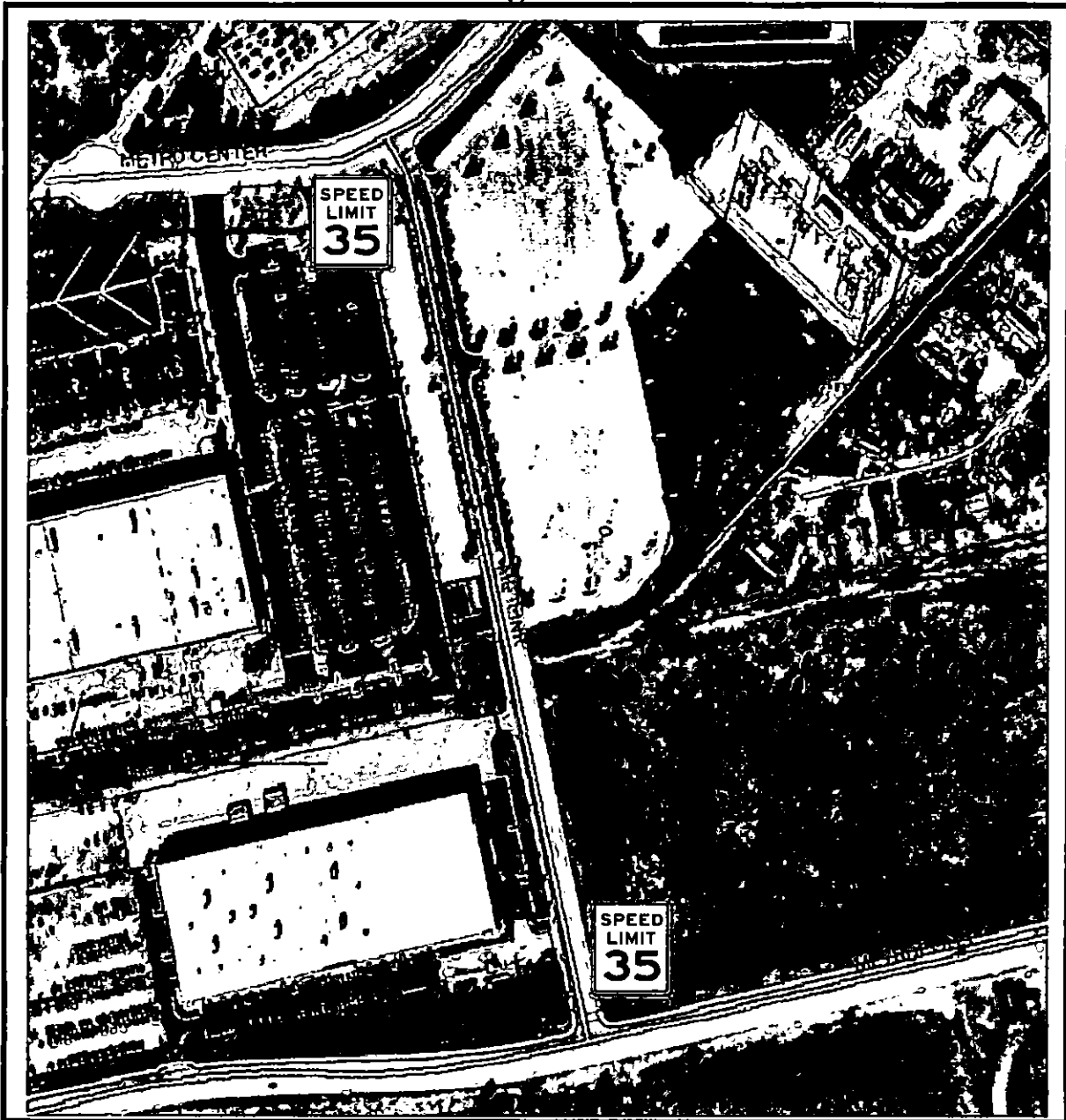
As shown in Table 1, the 85<sup>th</sup> percentile speed on the northbound and southbound lanes was recorded in the range of 39 mph to 42 mph. The average 85<sup>th</sup> percentile speeds on Metlink Drive was recorded at 40.5 mph for the northbound and southbound lanes of traffic.

**Table 1.**

Block Number	Street Segment	Existing Speed Limit	85% Speed		Traffic Volumes
			NB	SB	
3000	From Metro Center Dr. to Metropolis Dr.	None	39	42	2376

Figure 2 presents a map of the study area and the proposed speed limit based on the collected data and analysis.

**Figure 2**



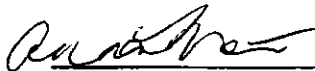
Austin Transportation Department  
Speed Zone Map  
Metlink Drive

**General Comments:**

Metlink Drive provides a uniform design of a four-lane arterial with a double yellow centerline from Metro Center Drive to Metropolis Drive and is approximately 1600 feet long. Adjacent land along Metlink Drive are two large parking lots on both sides of the road to serve a large office complex on the west side. There is currently undeveloped land on the east side of the roadway.

Based on the analysis of this information, it is my engineering judgement that the speed limit on Metlink Drive should be 35 miles per hour from Metro Center Drive to Metropolis Drive.

Respectfully submitted,

 3-10-17

Anna Martin, P.E., PTOE      Date  
South Austin Engineer  
Traffic Engineering Division

AUSTIN TRANSPORTATION DEPARTMENT