



City of Austin City Council Worksession

Phase I Update

June 20, 2017



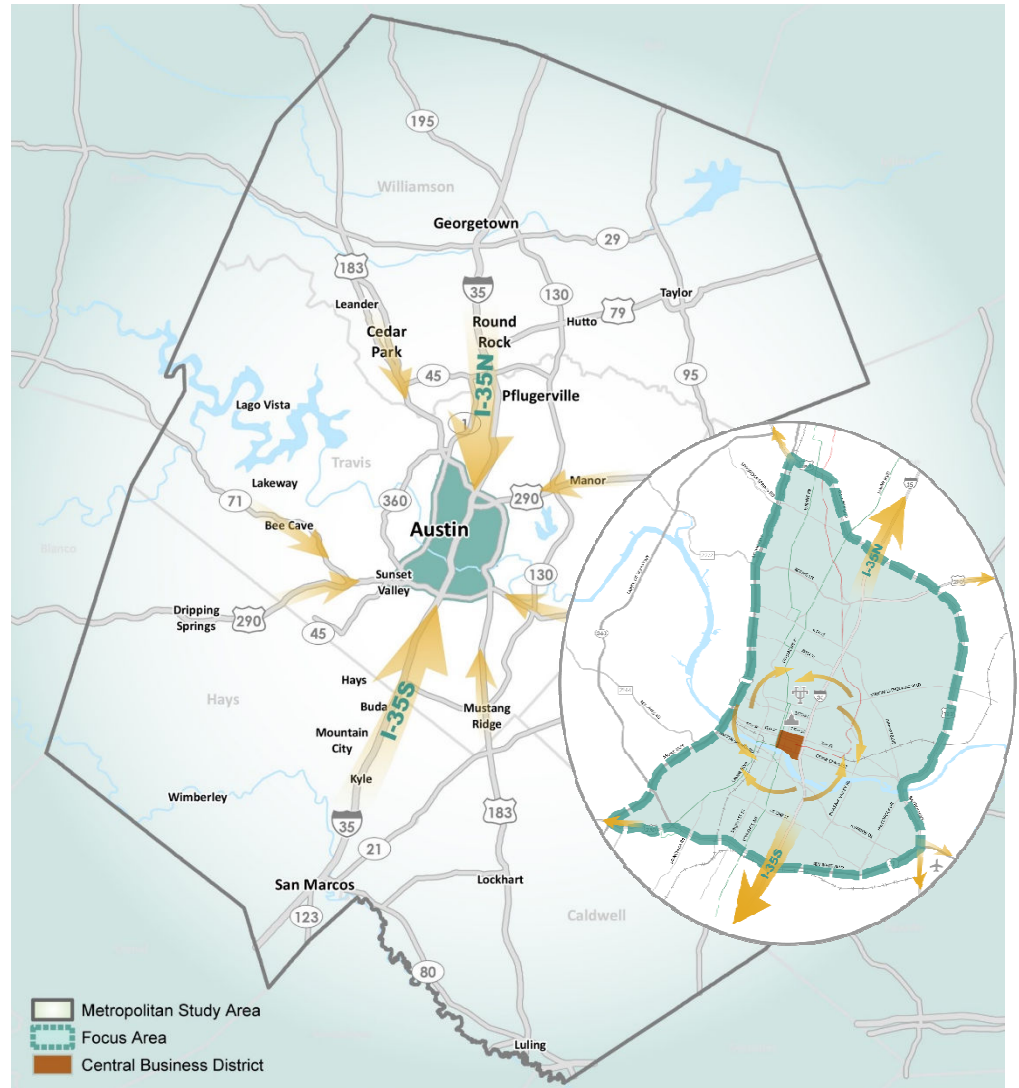


What are we doing?

- Refining Project Connect Plan
- Coordinating with Austin Strategic Mobility Plan

Why?

- Select high-capacity transit solutions for travel into, out of, and within central Austin from surrounding metro region





Bus



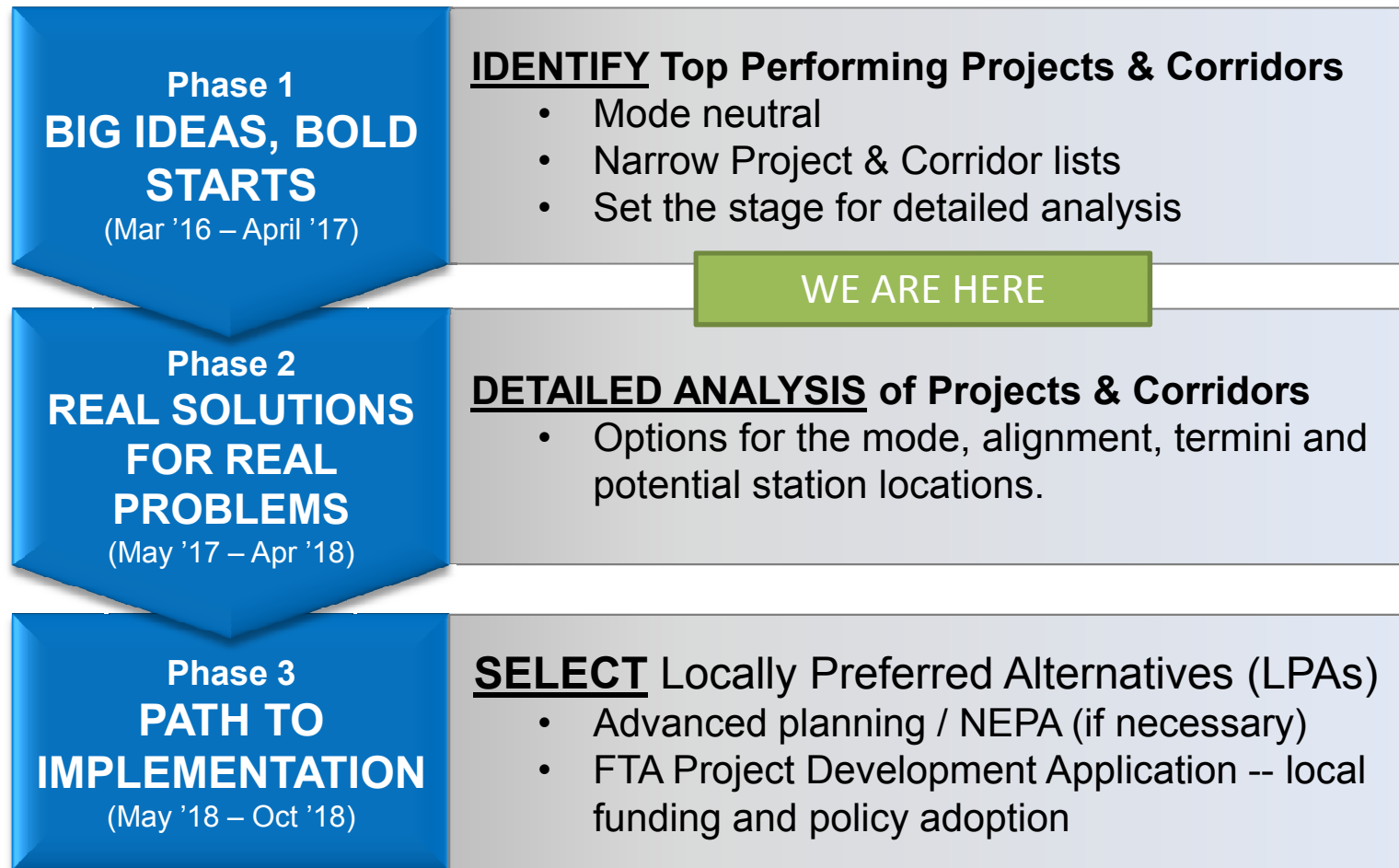
Private Car



Uber/Lyft Car



Phased Approach to Project Development



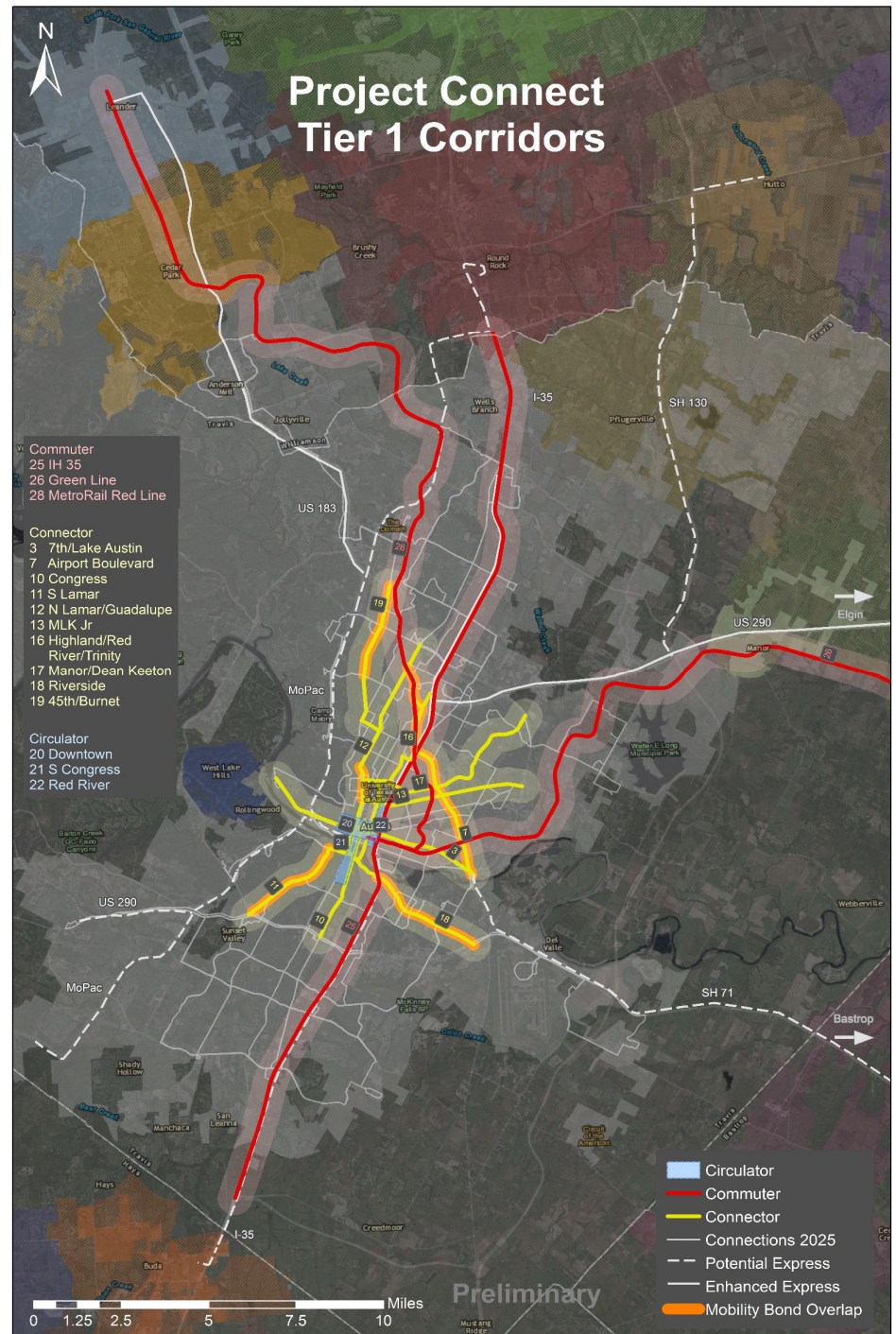
WE ARE HERE

Public Involvement



Phase 1: Preliminary Results (Investment Corridors) – Region

- COMMUTERS
- CONNECTORS
- - - CIRCULATORS
- - - POTENTIAL EXPRESS





Phase I Recommendations- Investment Corridors



Commuter

- IH 35
- Red Line (double track)
- Green Line



Circulator

- Downtown Circulator
- Red River Circulator
- S Congress Circulator



Connector

- N Lamar/Guadalupe
- Highland/Red River/Trinity
- Congress
- Riverside
- Martin Luther King Jr
- Airport Blvd
- 7th/Lake Austin
- Manor/Dean Keeton
- 45th/Burnet
- S Lamar



Phase I Recommendations- Enhancement Projects



MetroRapid

- Guadalupe/Lavaca - transit signal priority
- Guadalupe/Lavaca - extend existing transit priority lanes
- S 1st St - priority treatments
- W MLK Jr Blvd (Guadalupe/Lavaca) - intersection upgrades



MetroExpress

- W 5th St & W Cesar Chavez, Mopac to Guadalupe
- 183 N



MetroRail

- Rail station capacity projects

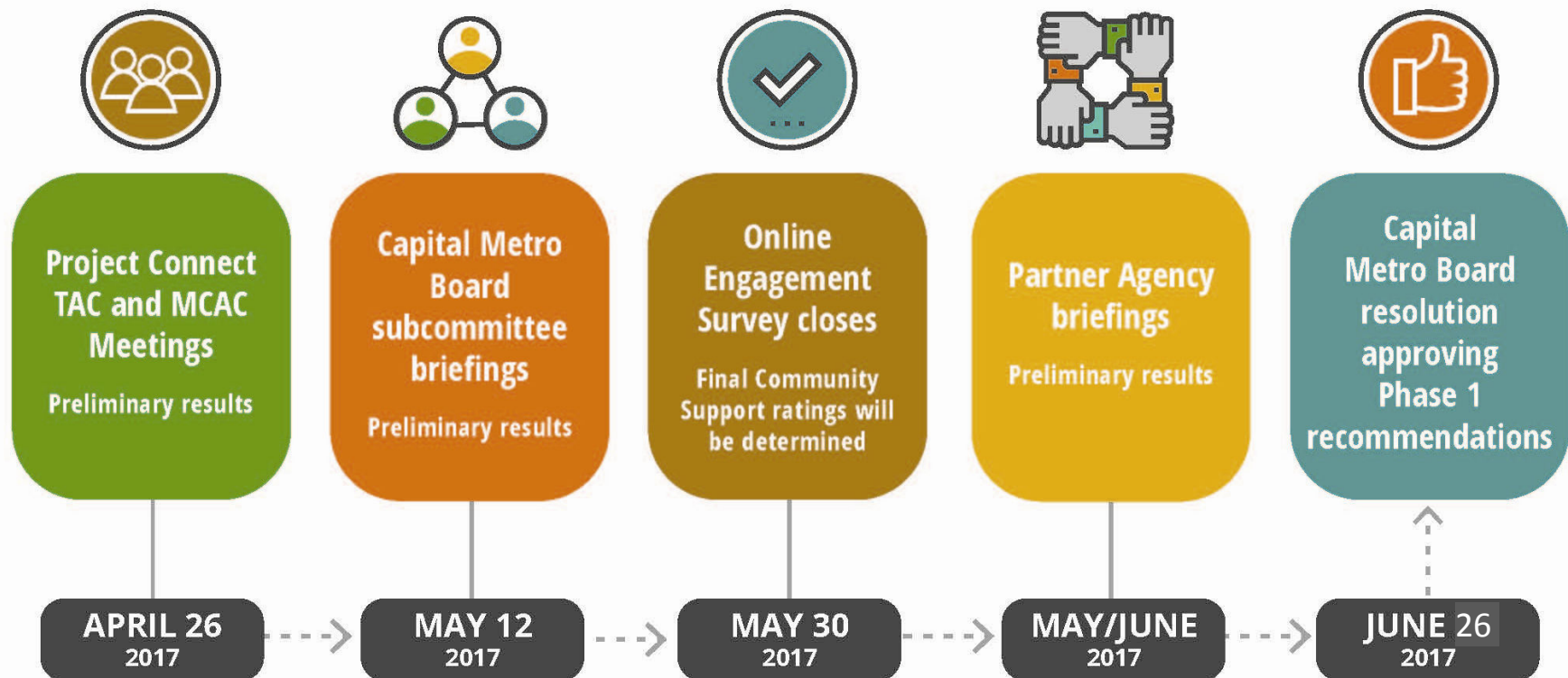


Mobility Hub

- W 4th St (Republic Square)
- W 4th Street
- North Lamar Transit Center
- W 4th St (DT MR Station)
- Leander Station
- Crestview
- Westgate



Phase I Results & Recommendations- Process



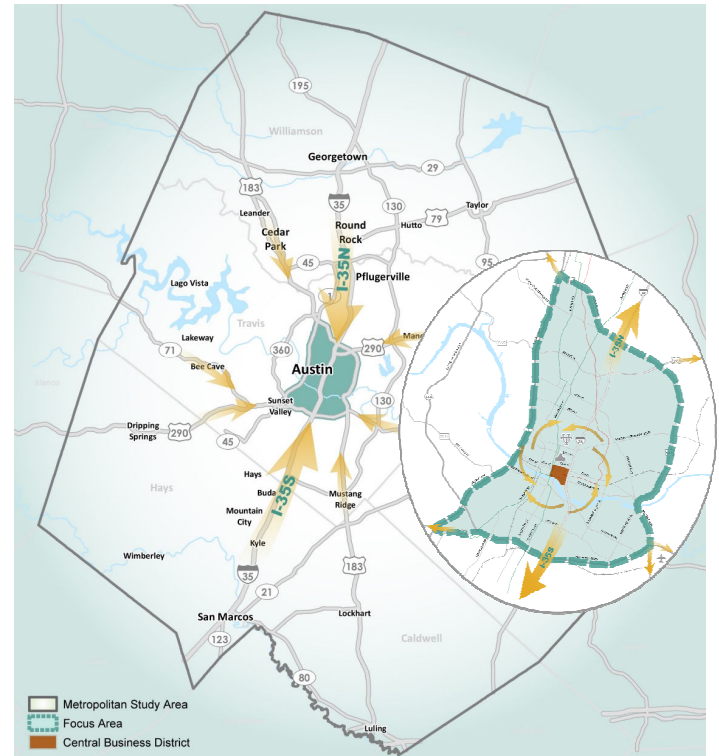


Today's Status

- Phase One findings
- Continue coordination in Phase II

Next Steps

- Initiate Phase II
- Begin detailed analysis of Investment Corridors and Enhancement Projects





What's the Connection to Austin City Council?

Priority Outcomes

1. Economic opportunity and affordability
2. Mobility
3. Safety
4. Health
5. Cultural and learning opportunities
6. Trustworthy government





projectconnect

New Transit Options for a Greater Austin

