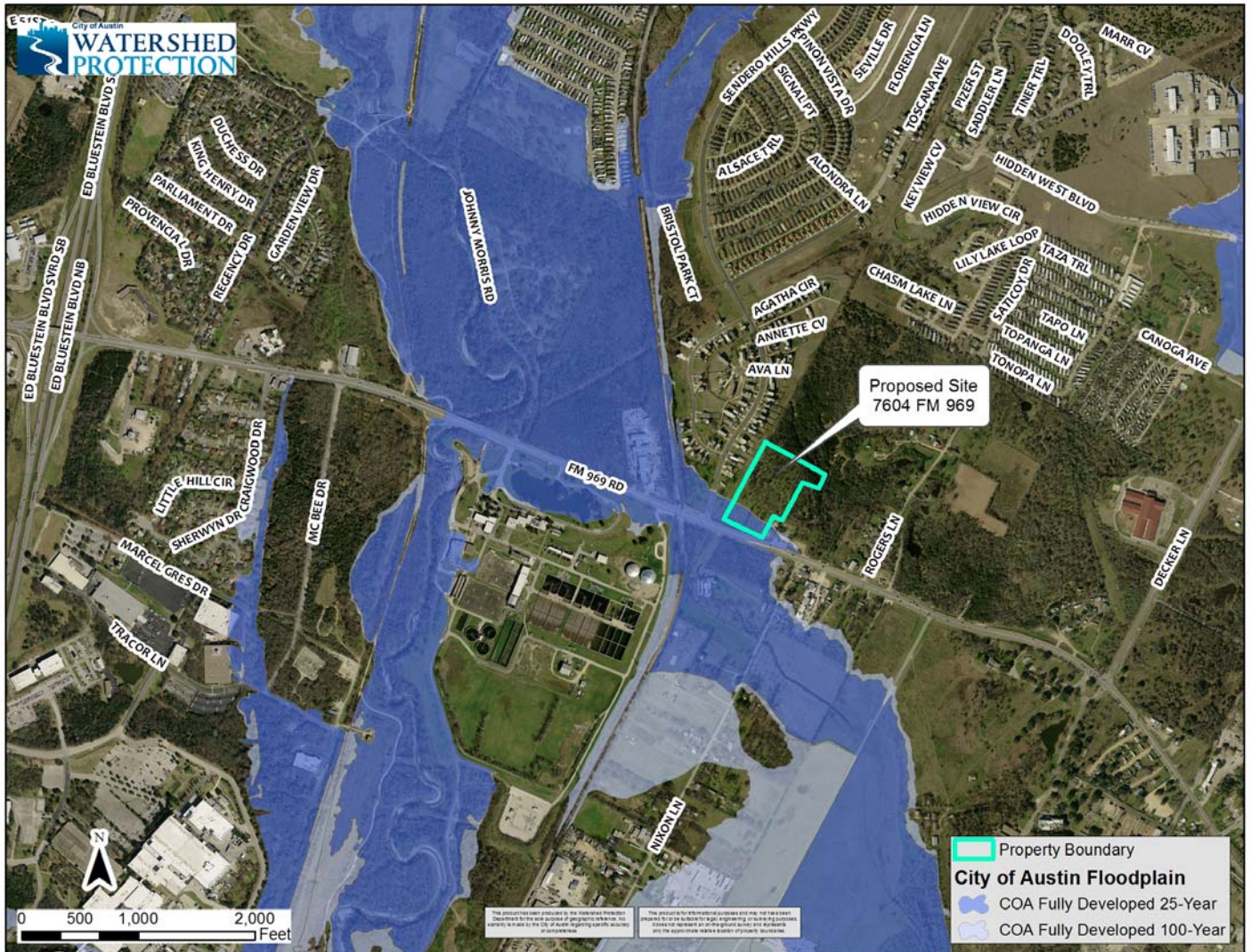


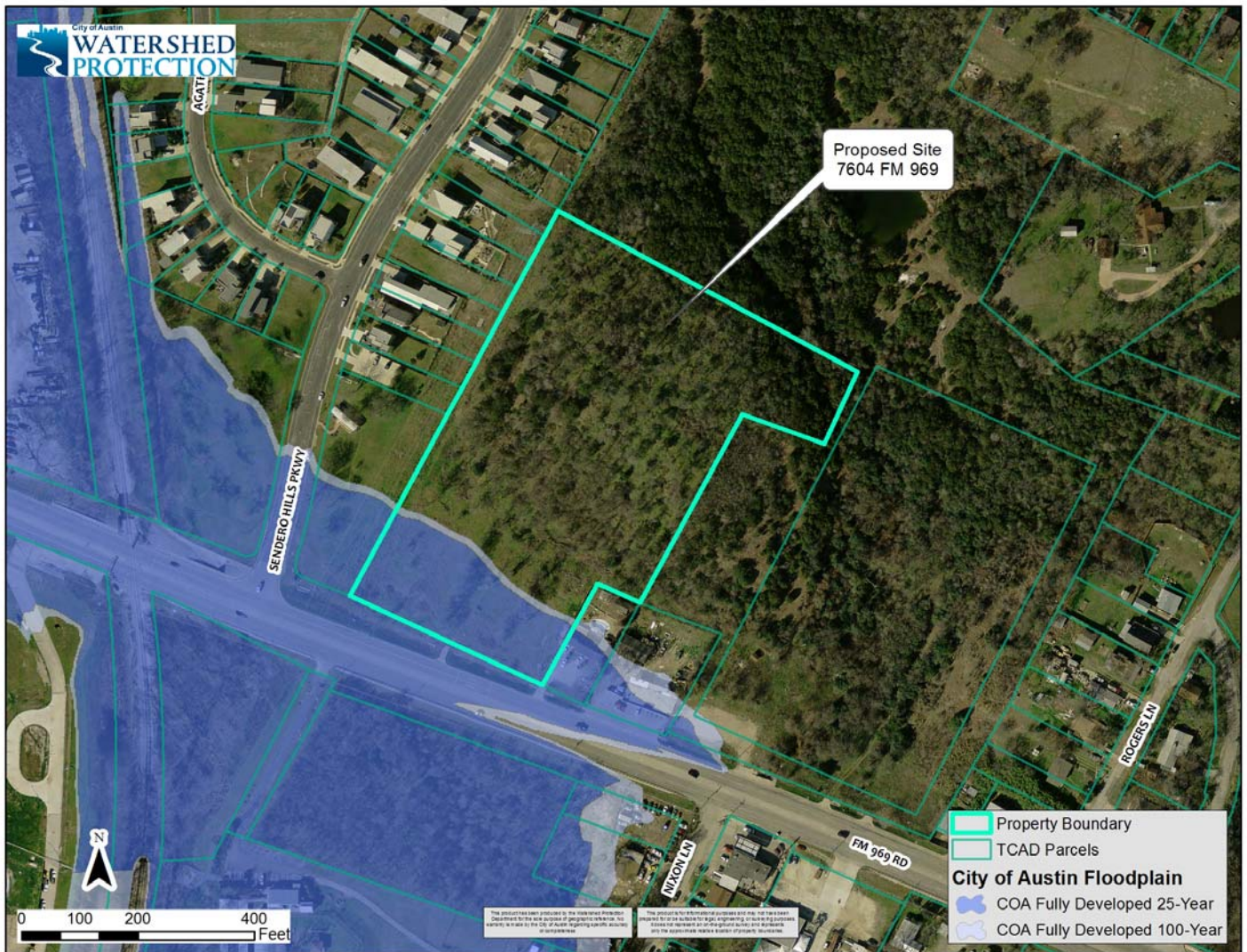
Backup Information Packet

Concerning a public hearing to consider an ordinance authorizing a floodplain variance to construct a church, which would not have safe access through the Walnut Creek 100-year floodplain.

Site Location Map for Church at 7604 FM 969



Zoomed in Site Location Map for Church at 7604 FM 969



Zoomed in Site Location Map of Proposed Improvements

