

Customer Driven. Community Focused.



# Low-Income Community Solar Discount Proposal

Briefing to EUC

Danielle Murray, CES – Solar, 11/13/17





# Community Solar Program

- AE's Community Solar program launched Dec 2016 with the 185 kW Palmer solar array; 2.5 MW La Loma project under construction
- Residential customers can subscribe to the program, pay Community Solar Adjustment instead of Power Supply Adjustment (PSA) on their bill
- Community Solar rate is fixed for 15 years, stabilizing participants' power supply costs, and providing an opportunity to save money over the long run
- The Community Solar rate is currently a premium over the PSA, adding \$10-19 to the average participant's bill
- Proposing a low-income carve out at a discounted rate to expand access to underserved markets, per Council Resolution No. 20171005-033.





# Low Income Community Solar Carve Out

**Proposal:** Allocate half of La Loma capacity to CAP customers at 1.5 cent/kWh discount

	Market-Rate	Low-Income
<b>Capacity (MW)</b>	1.25 MW	1.25 MW
<b>Est. # of Participants</b>	200	200
<b>Community Solar Rate</b>	\$0.0427 / kWh	\$0.0277 / kWh
<b>Δ vs 2018 PSA</b>	+\$0.013 / kWh	-\$0.002 / kWh
<b>Eligibility</b>	Any residential customer that opts-in, while capacity remains.	Income-verified CAP customers that opt-in before 3/31/18, while capacity remains.
<b>Terms</b>	15 years, fixed. Moves with customer w/in AE territory. May cancel at any time without penalty.	15 years, fixed, so long as in CAP program. Moves with customer w/in AE territory. May transfer to market rate if no longer CAP customer. May cancel at any time without penalty.



# Next Steps

- Refine customer eligibility
- Finalize tariff revision language and RCA
- Revised tariff to EUC Dec 11 and Council Dec 14 for public hearing and approval
- Billing project to add new rate to CCB
- Outreach to CAP community
- CAP customers enrolled in February

Running on **SUNSHINE**

Make locally-generated  
**COMMUNITY SOLAR**  
YOUR energy choice

[austinenergy.com/go/communitysolar](http://austinenergy.com/go/communitysolar)  
**512-482-5346**

The graphic is a colorful illustration for a community solar program. It features a woman in a yellow shirt and purple pants running on a path. In the background, there are solar panels, a city skyline, and residential buildings. The text "Running on SUNSHINE" is at the top, and "Make locally-generated COMMUNITY SOLAR YOUR energy choice" is in the middle. The Austin Energy logo is at the bottom, along with the website and phone number.





**City of Austin - Austin Energy  
Customer Energy Solutions**

Danielle Murray

Solar Program Manager

p. 512.322.6055

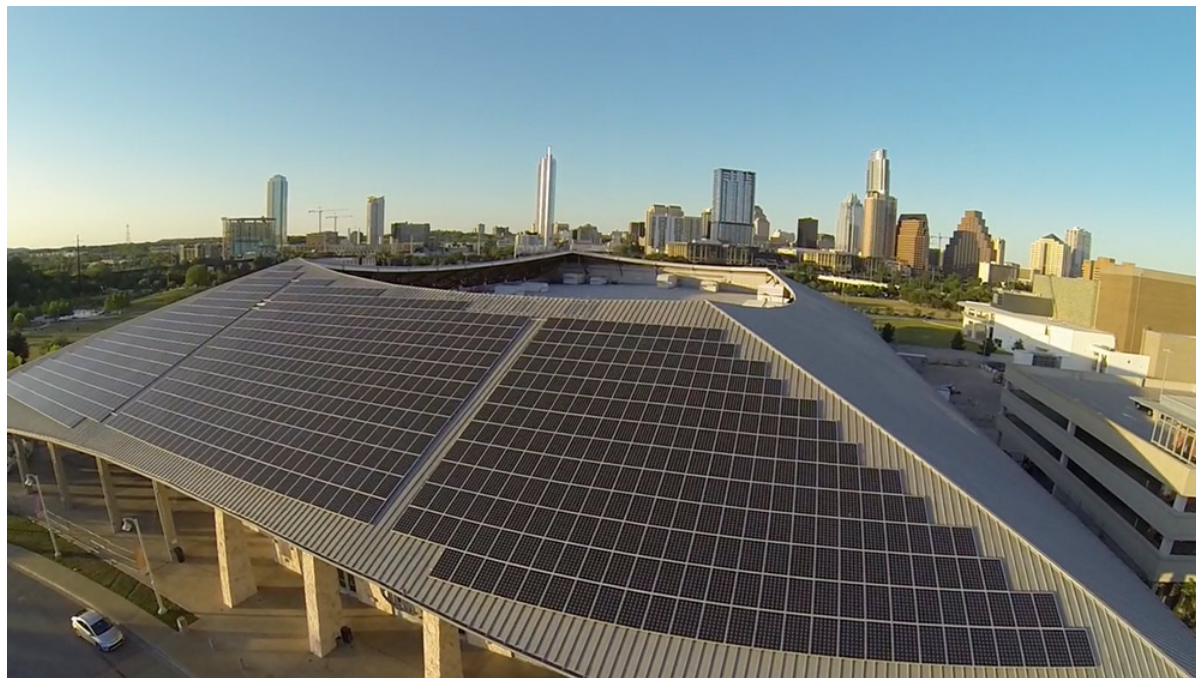
e. [danielle.murray@austinenergy.com](mailto:danielle.murray@austinenergy.com)

Twitter

 [@austinenergy](https://twitter.com/austinenergy)

Facebook

 [facebook.com/austinenergy](https://facebook.com/austinenergy)



# Questions?