

Pleasant Valley / Elmont Intersection Safety Project Updates to Bicycle Advisory Council

Upal Barua, M.Sc., P.Eng., P.E.
Engineering Supervisor
Austin Transportation Department

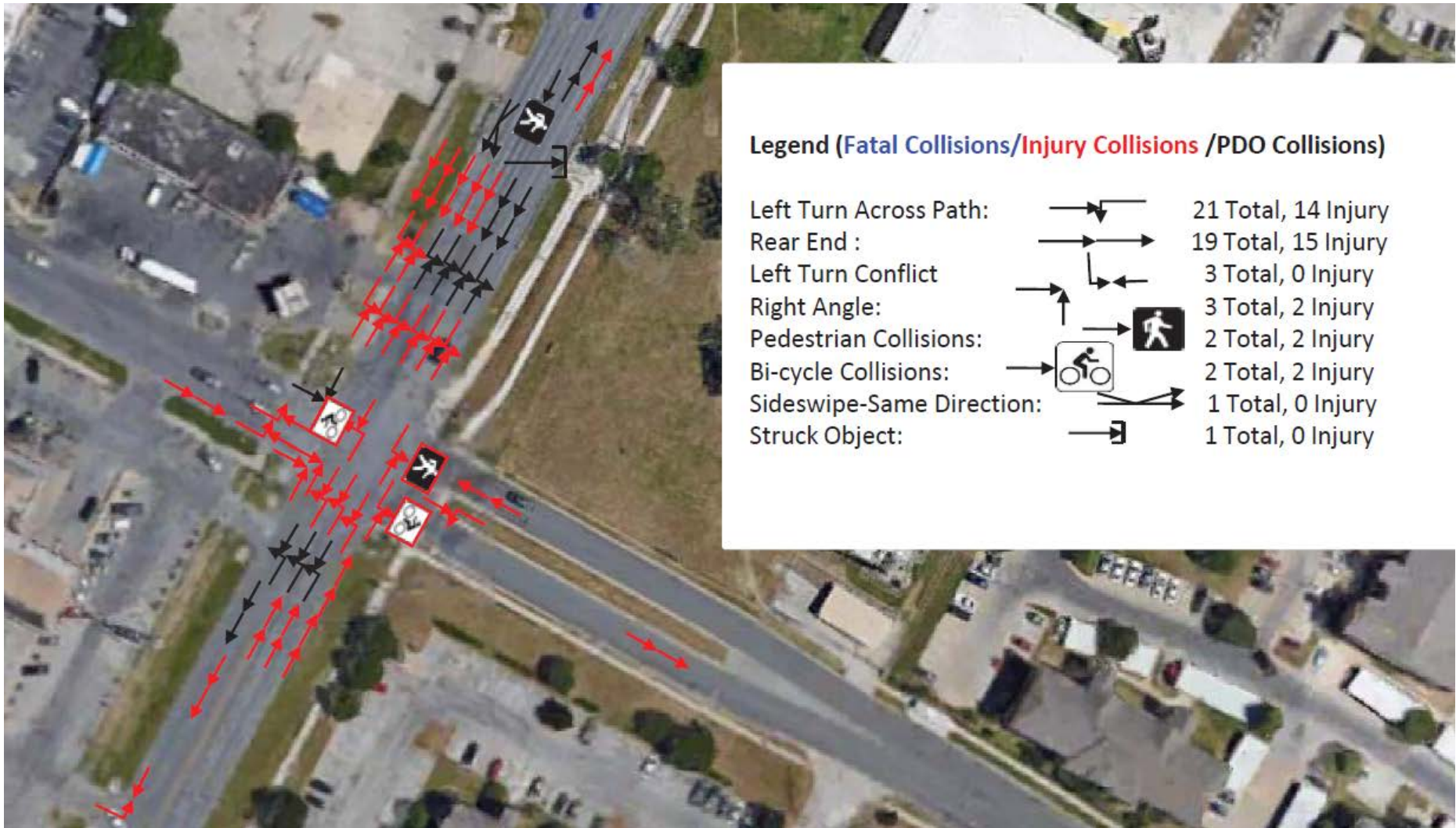


2016 Bond Intersection Safety Program

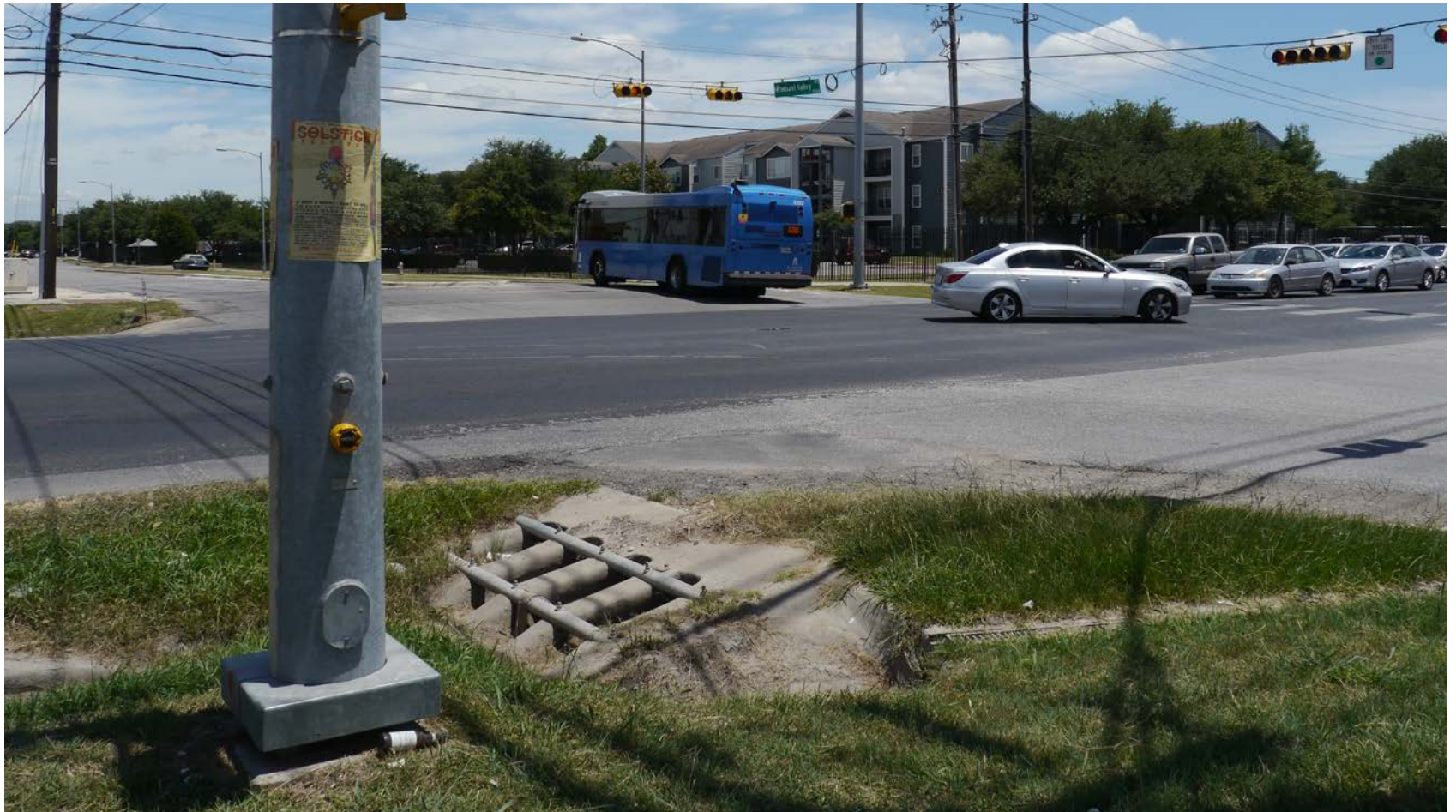
- \$15 Million Bond Fund
- 28 High Priority Intersections
- Crash Frequency, Rates and Severity Levels
- Pleasant Valley Road / Elmont Drive Intersection:

One of the Early-out Projects

Crash Diagram



Before Conditions



Before Conditions - Continued

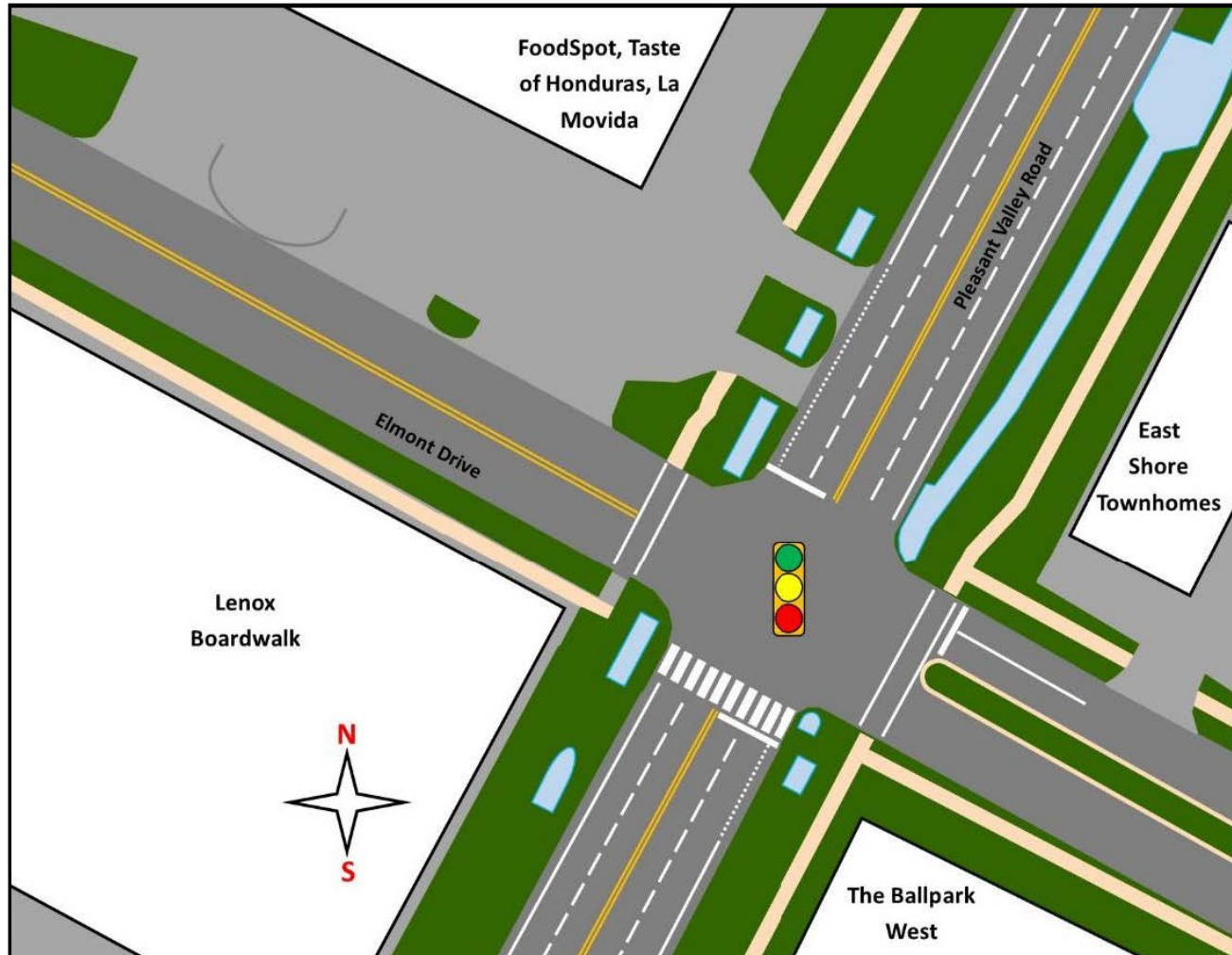


Before Conditions - Continued



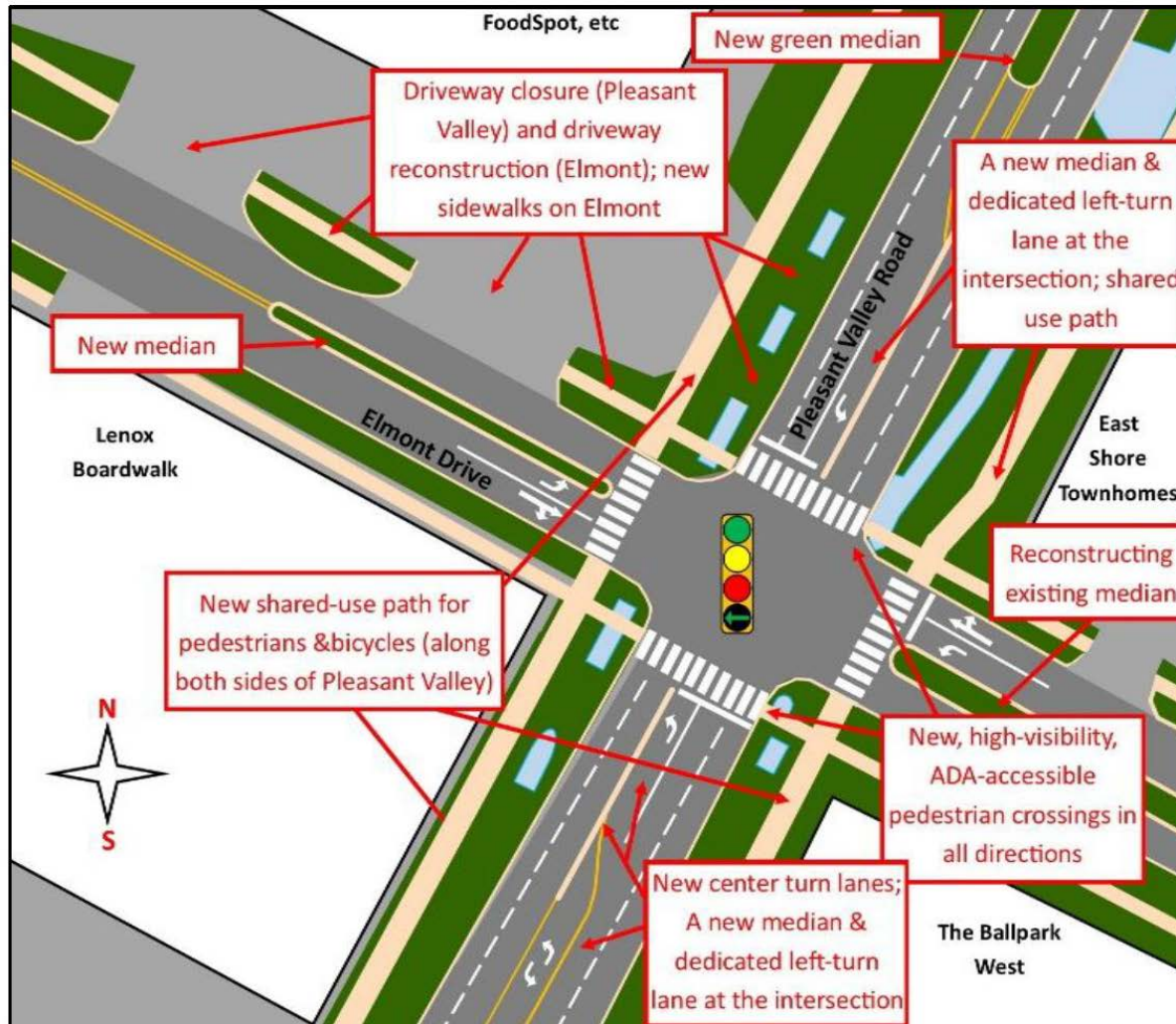
Before Condition - Schematic

BEFORE



Improvement Plan - Schematic

AFTER



Images/maps are not drawn to scale or intended to be used for engineering purposes. For illustration only.

After Condition - Schematic

EXISTING CORNER CONFIGURATION



After Condition - Schematic

EXISTING ENTRANCE CONFIGURATION



Construction



Construction



Construction



Questions??