

Austin, Texas

Vibrant City with Cultural Heritage

Austin Vibrant City with Cultural Heritage



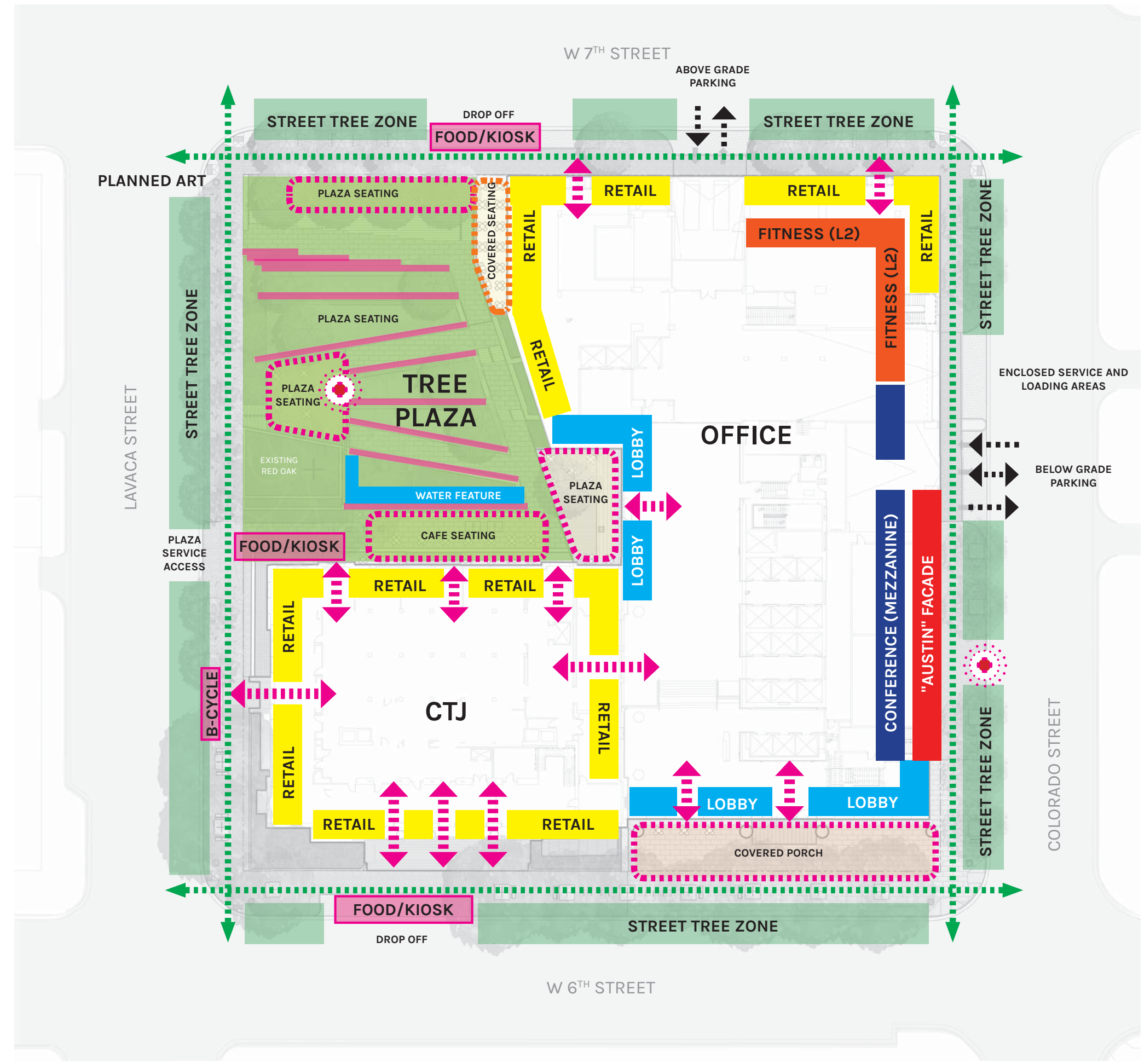


BLOCK71

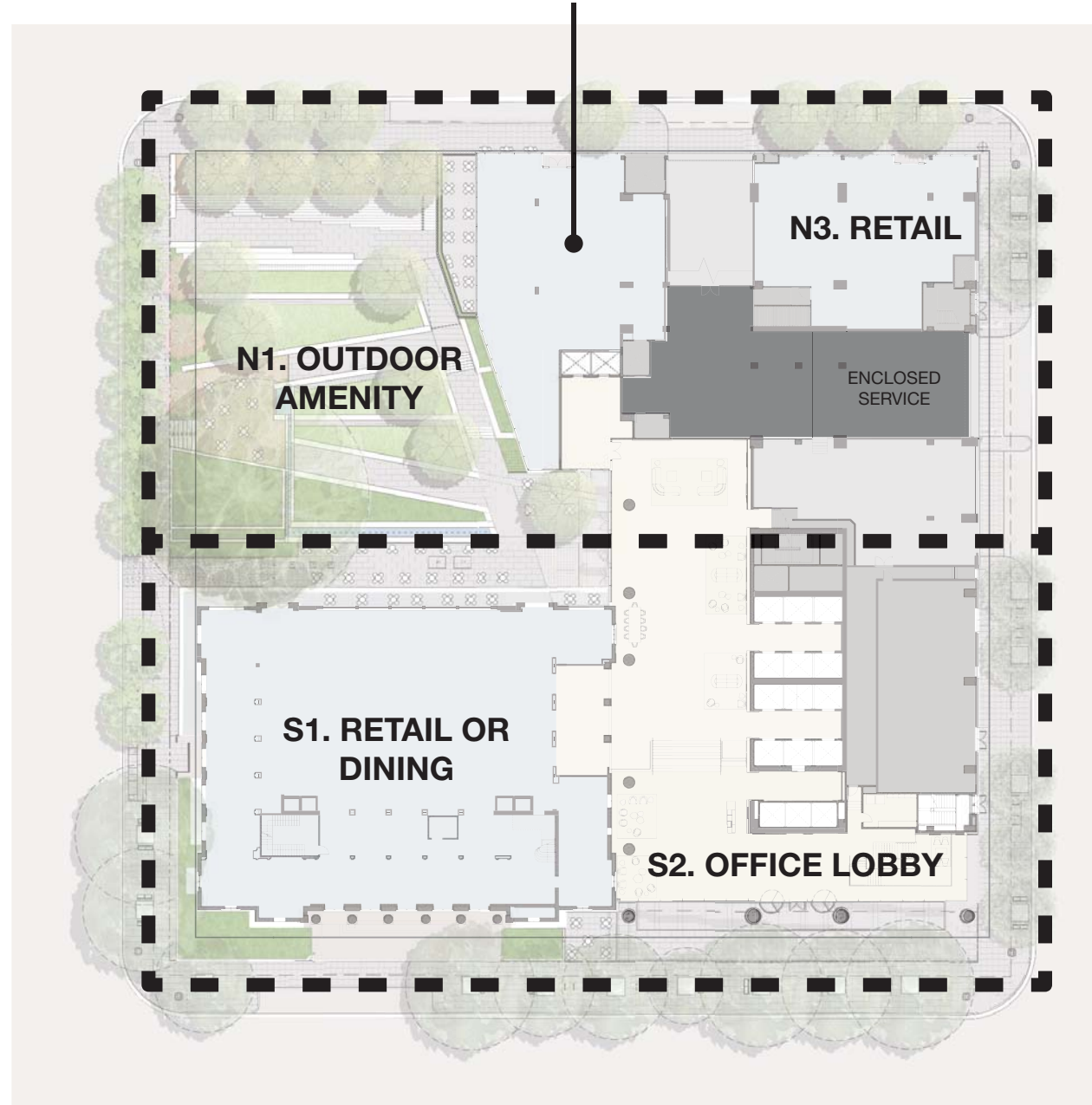
200 WEST SIXTH
AUSTIN TEXAS







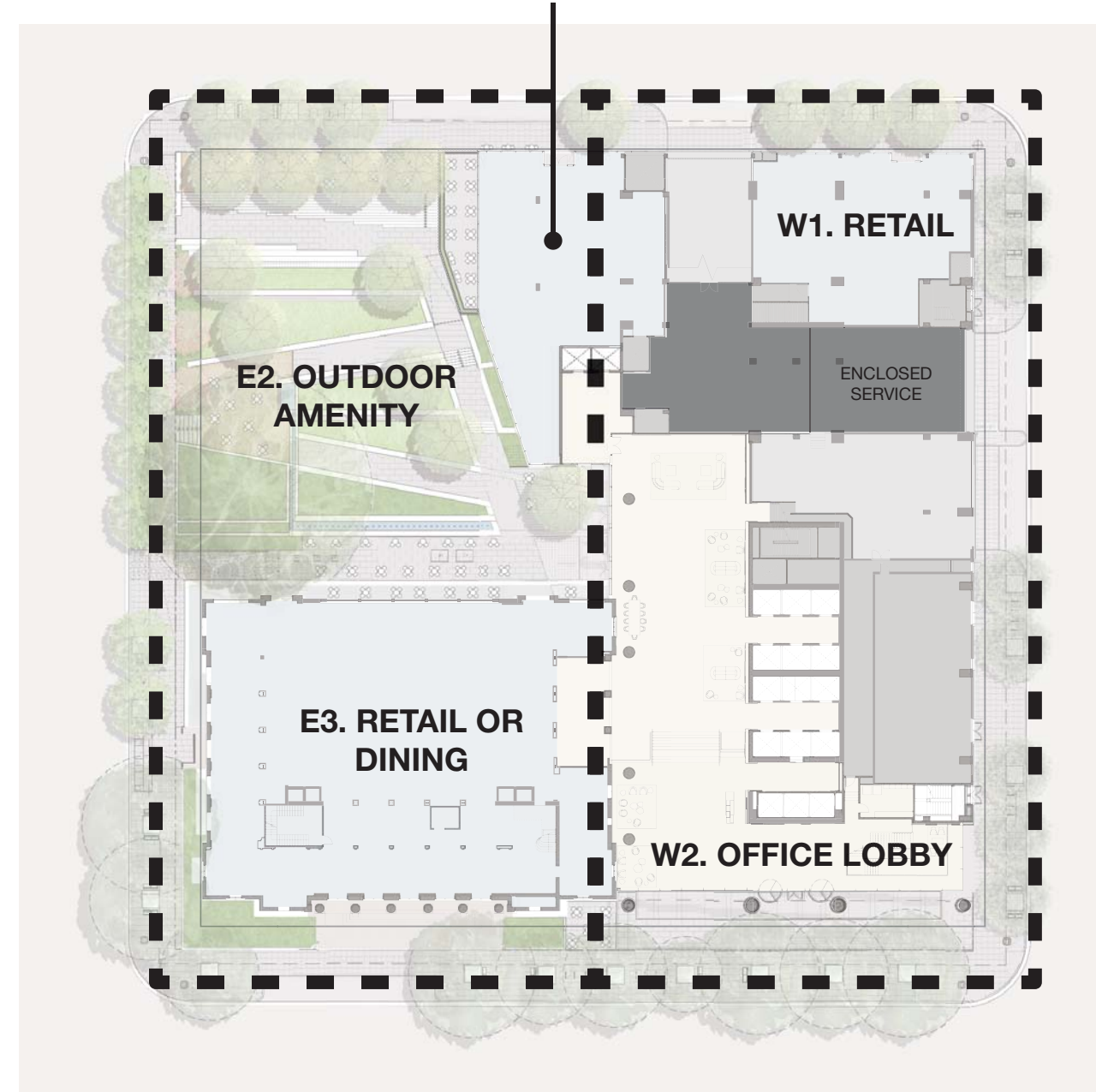
N2. RETAIL OR DINING
WITH OUTDOOR
SEATING



NORTH AND SOUTH BLOCK HALVES

AT LEAST TWO DIFFERENT USES PER HALF BLOCK ARE
REQUIRED

E1. RETAIL OR DINING
WITH OUTDOOR
SEATING



EAST AND WEST BLOCK HALVES





EXISTING PEDESTRIAN ORIENTED USE: MINIMAL

DRY FOUNTAIN AND IMPERVIOUS PLAZA



PROPOSED PEDESTRIAN ORIENTED USE: EXTENSIVE

NEW RETAIL 6000 SF)
 NEW RETAIL 4500 SF)
 OUTDOOR DINING + FOOD TRUCK AREAS
 ADAPTIVE REUSE - RETAIL/DINING (UP TO 15,000SF)
 OUTDOOR AMENITY + PLAZA EVENT SPACE





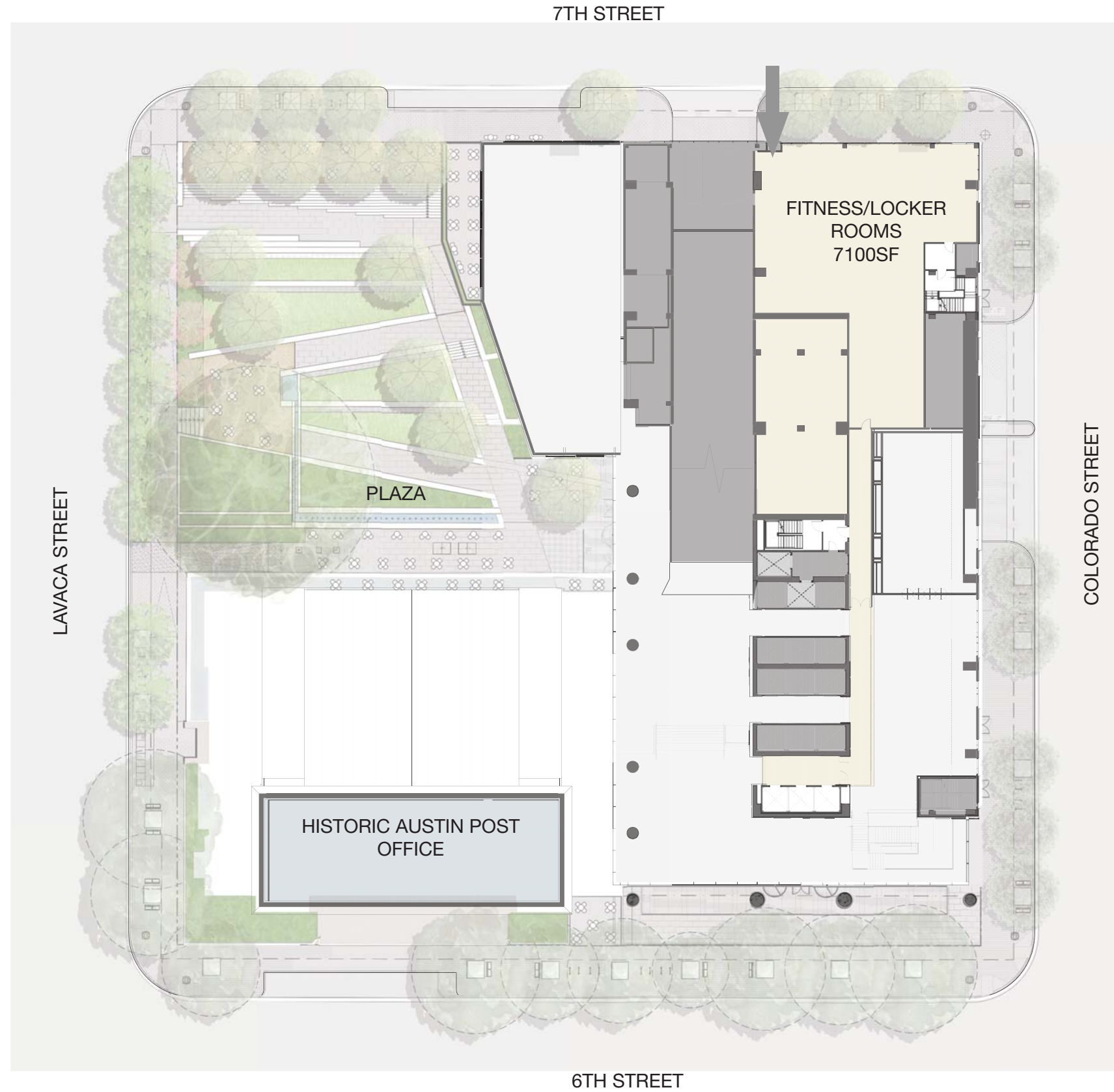
PLANNED ART

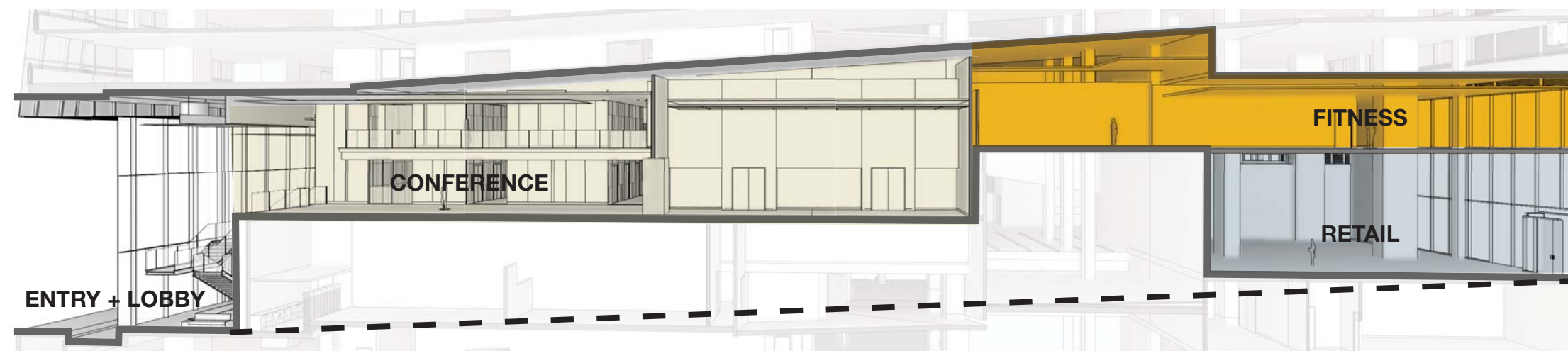
























INCLUSION OF LOCAL CHARACTER

SITE SPECIFIC DESIGN INCLUDES MAJOR FEATURING OF HISTORIC AUSTIN POST OFFICE IN LOBBY AND IDENTITY OF BUILDING





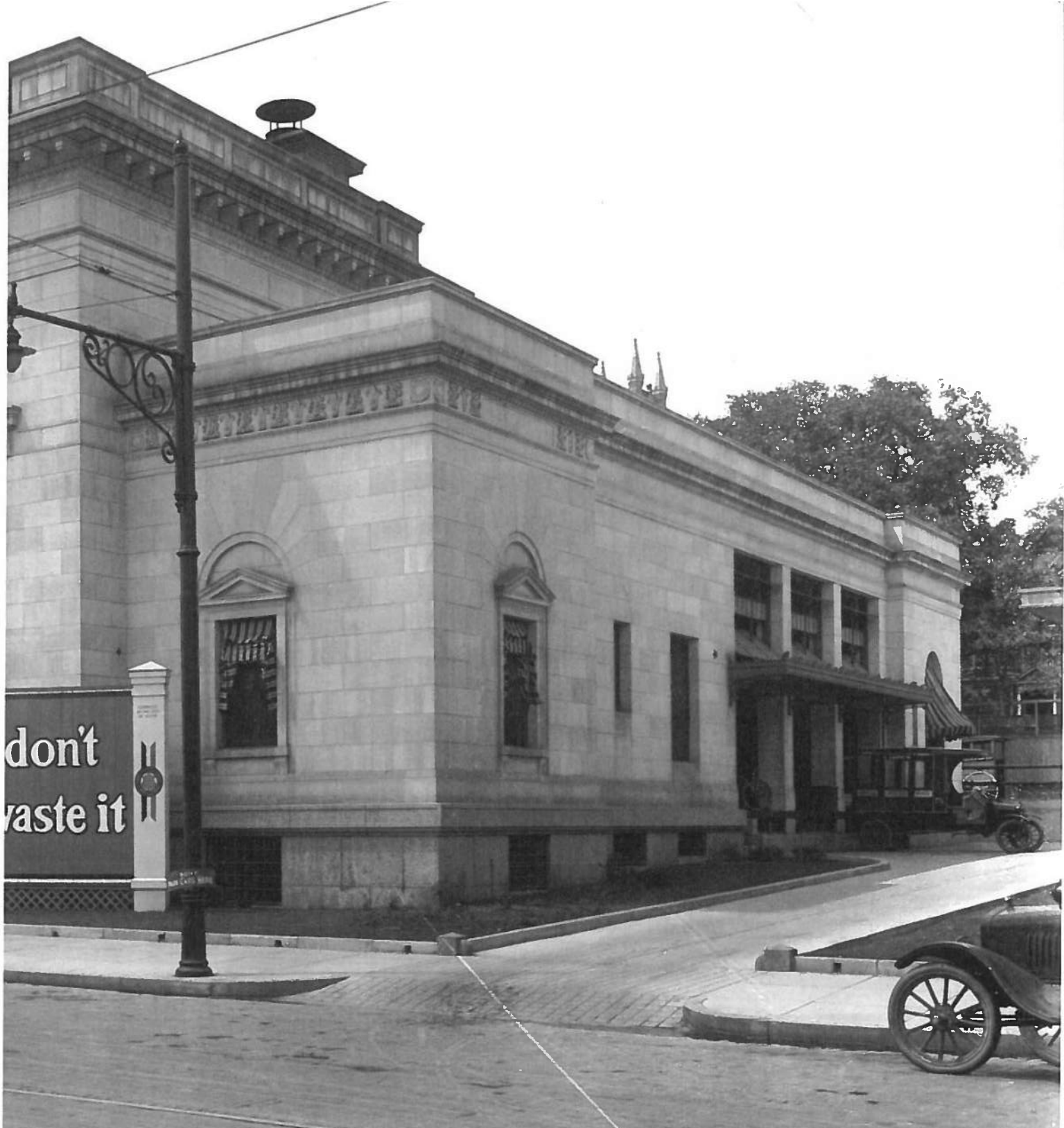


Appendix

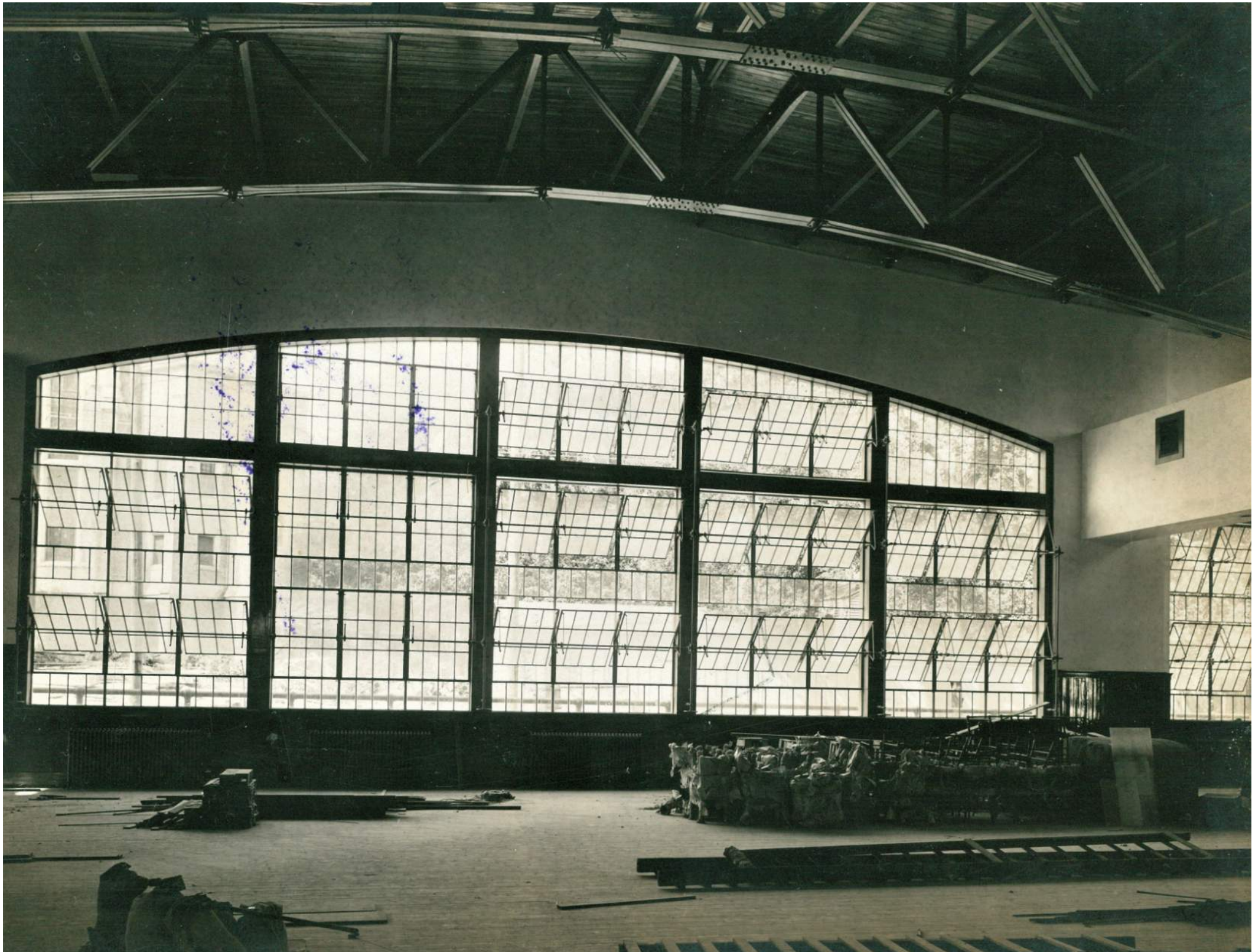
Claudia Taylor Johnson Building
Historical Photo



Claudia Taylor Johnson Building
Historical Photo

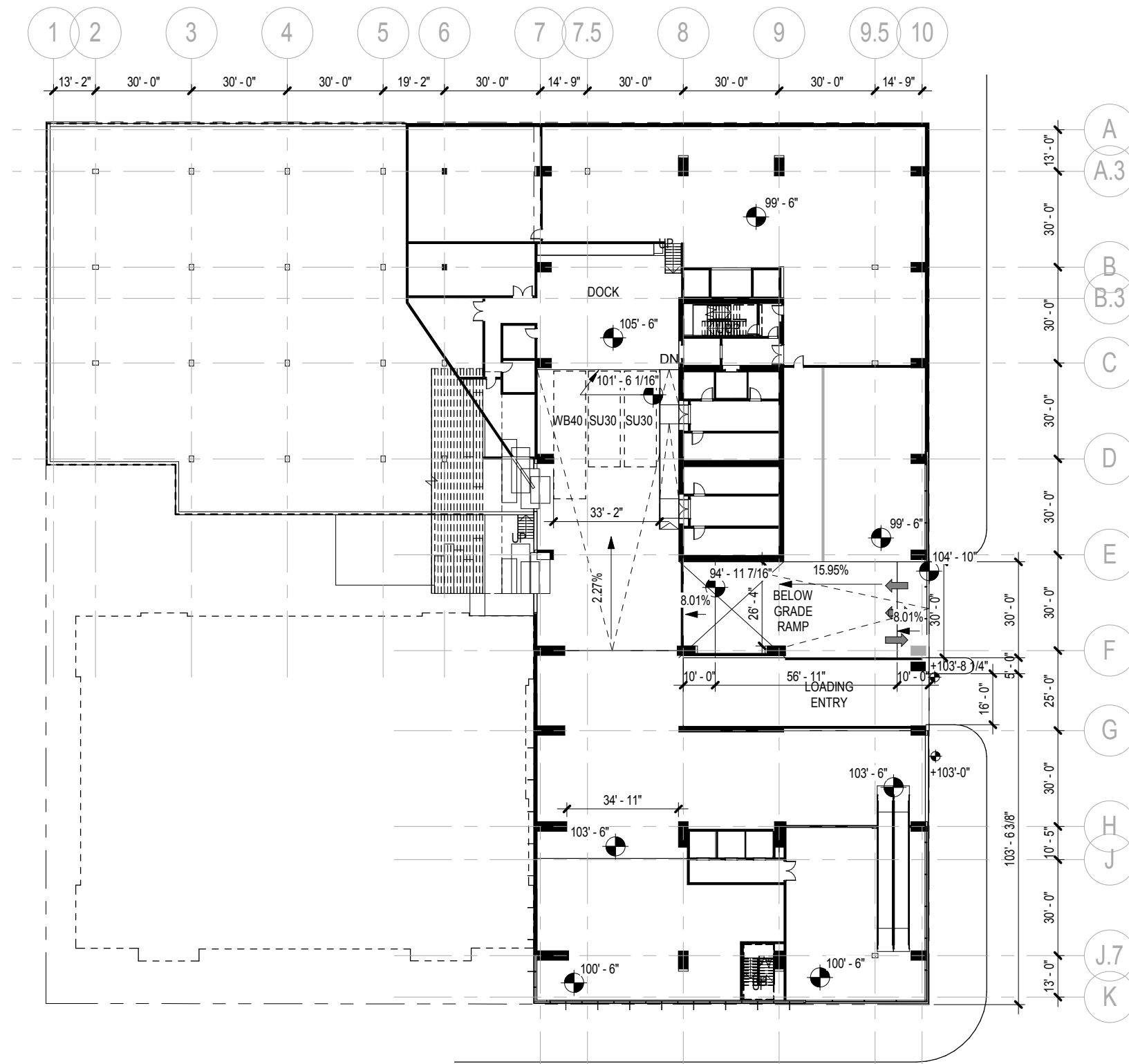


Claudia Taylor Johnson Building
Historical Photo

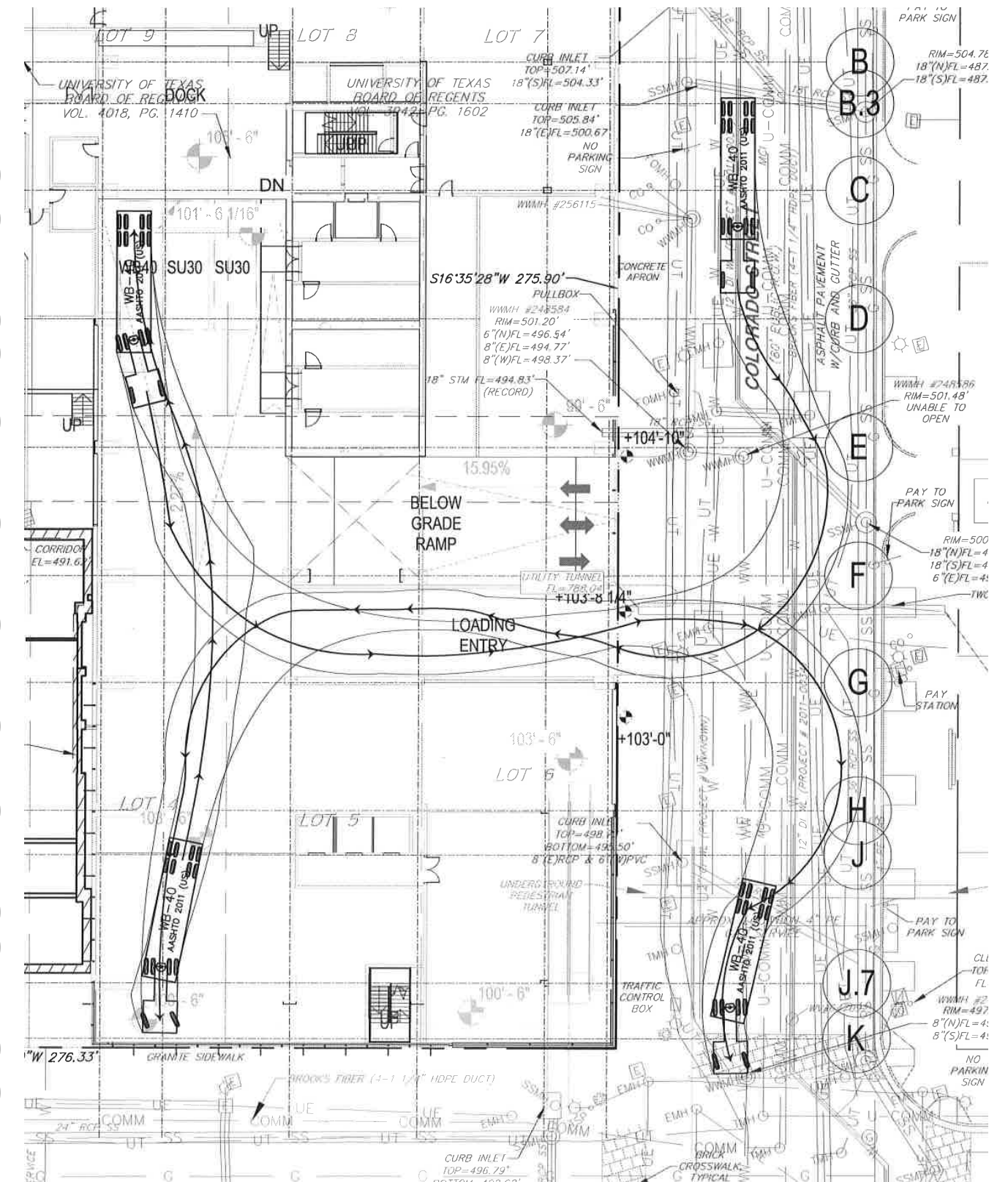




Loading



Level 1 - 6th Street Lobby / Loading & BOH



WB-40 Turn Analysis

