

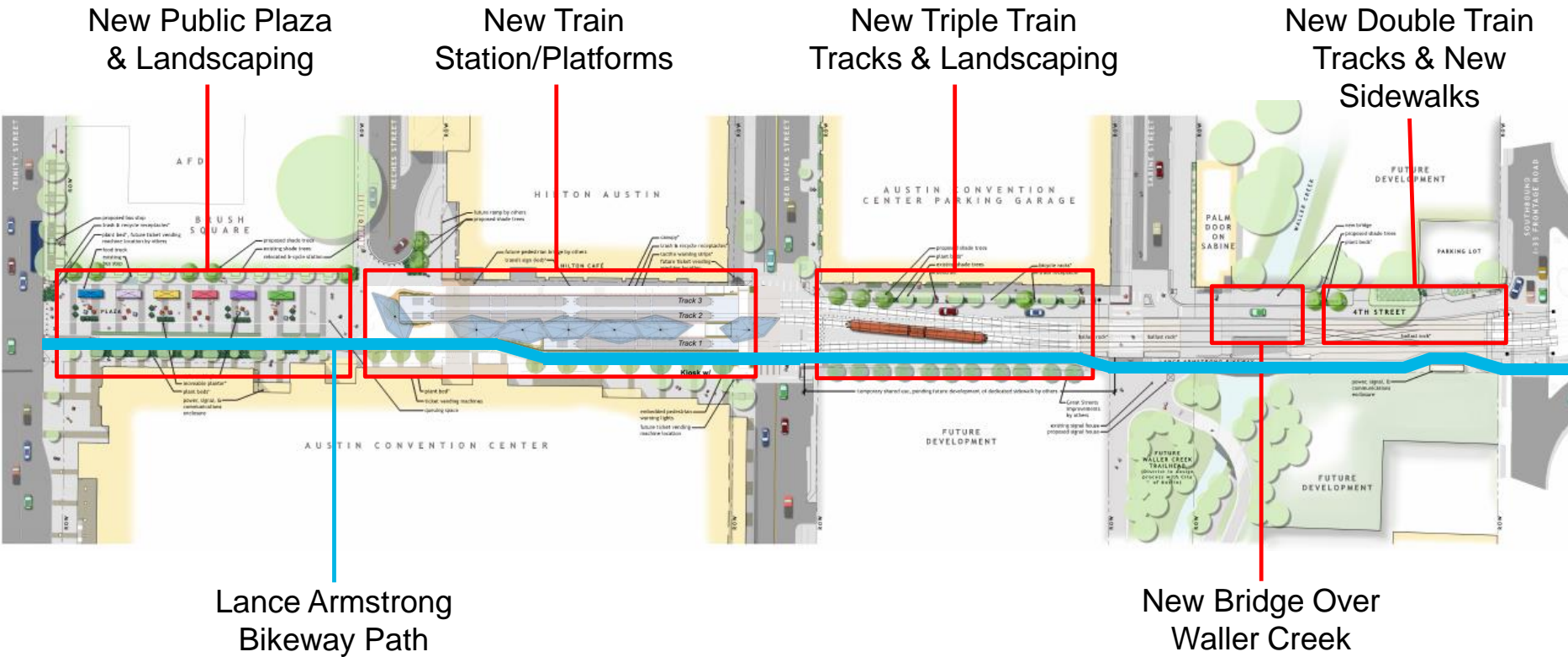


Capital Metro Downtown Station Improvements

Project Update - December 2017
(90% Design Phase)



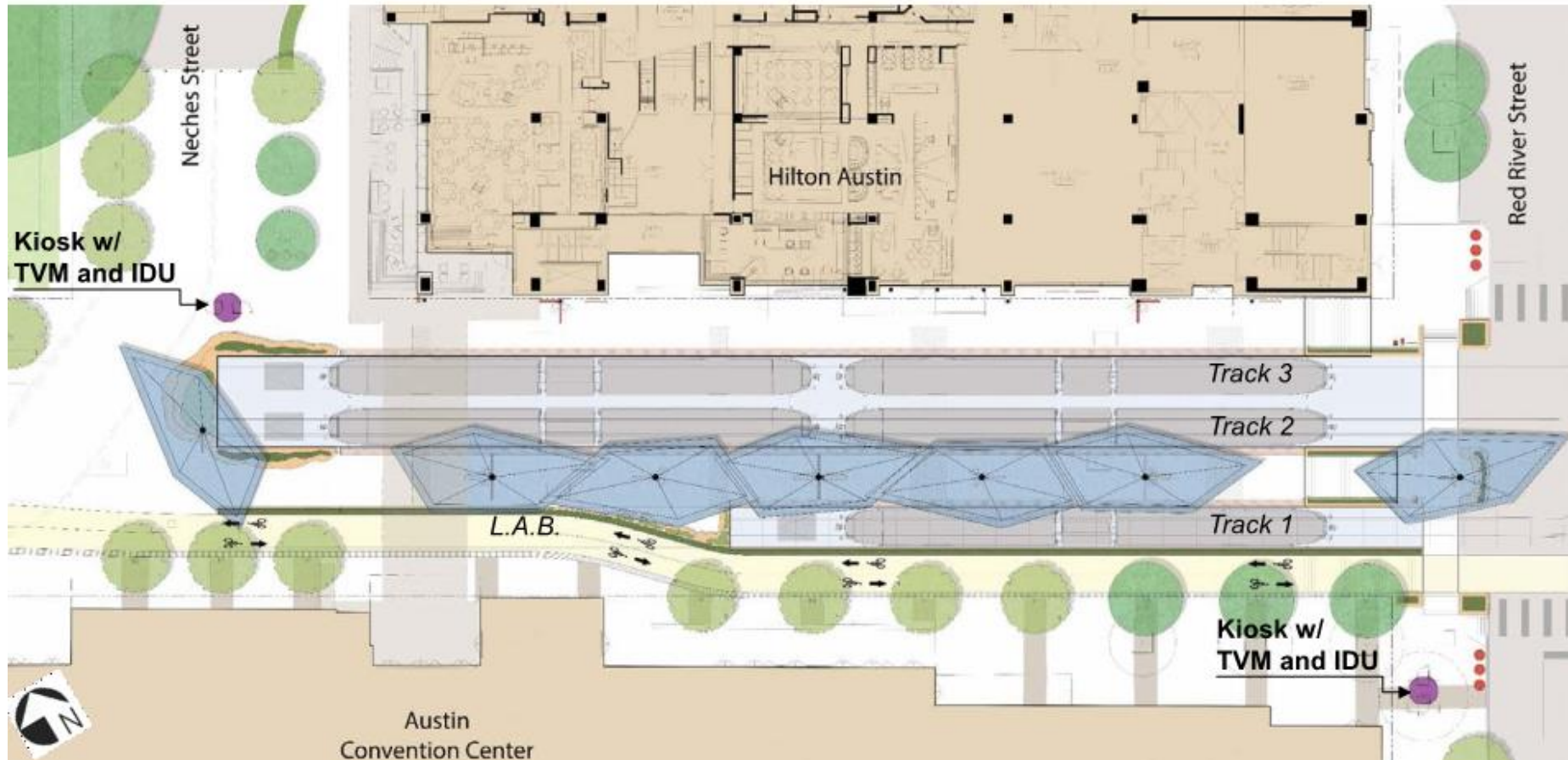
Overall Site Plan



Platform Site Plan

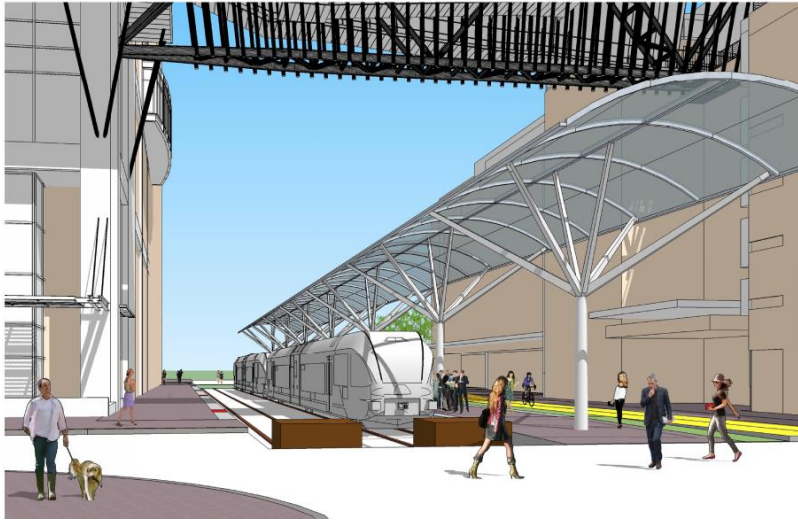
Extends East to West along Center Platform & Trackways

- 7 total parasols: 5 protecting entire Center Platform + 2 at entries
- 1 high parasol at both east & west entries
- Detached kiosk with TVMs, IDUs, station name & Capital Metro logo, telephone
- 2 – 4 validators located at approaches to platforms



Early Platform Canopy Concepts

Three Design Options



"Barrel Vault"



"Tilted Vault"



"Parasols"

Selection process included public surveys, open houses, City of Austin staff, CMTA staff/executives, & community entities



Preferred Platform Canopy Design "Parasols"

View along center
platform



View from Red River Street looking west

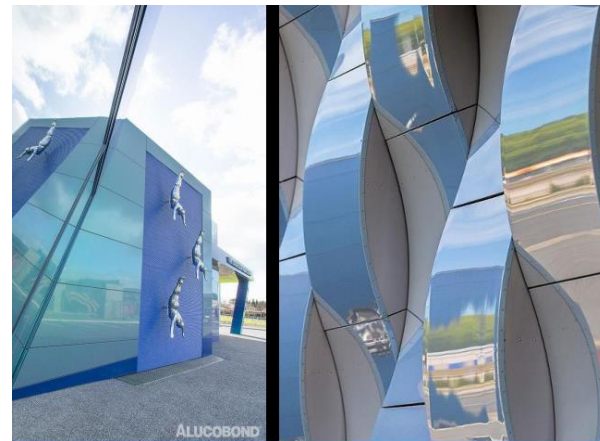
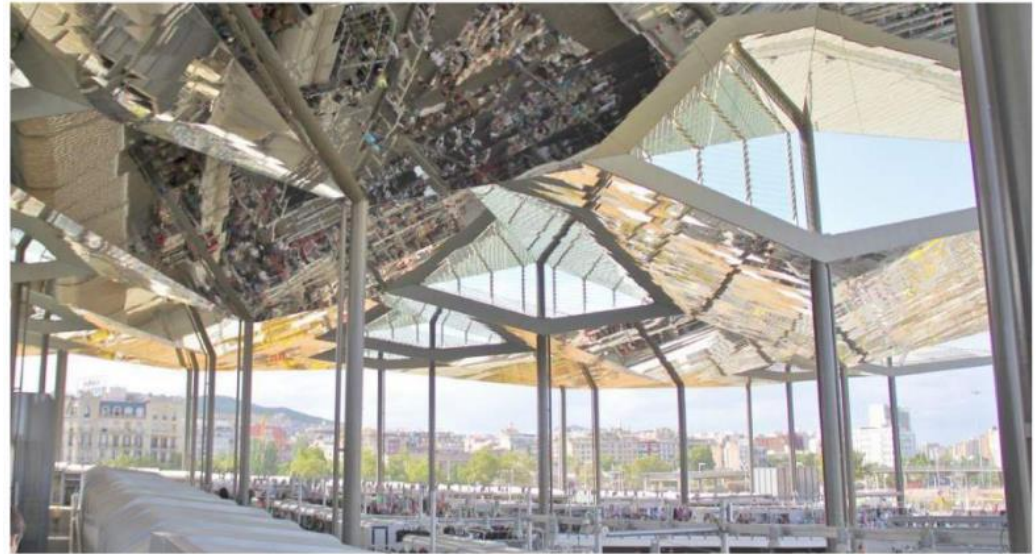
Platform Canopy Design

Similar Structures & Materials



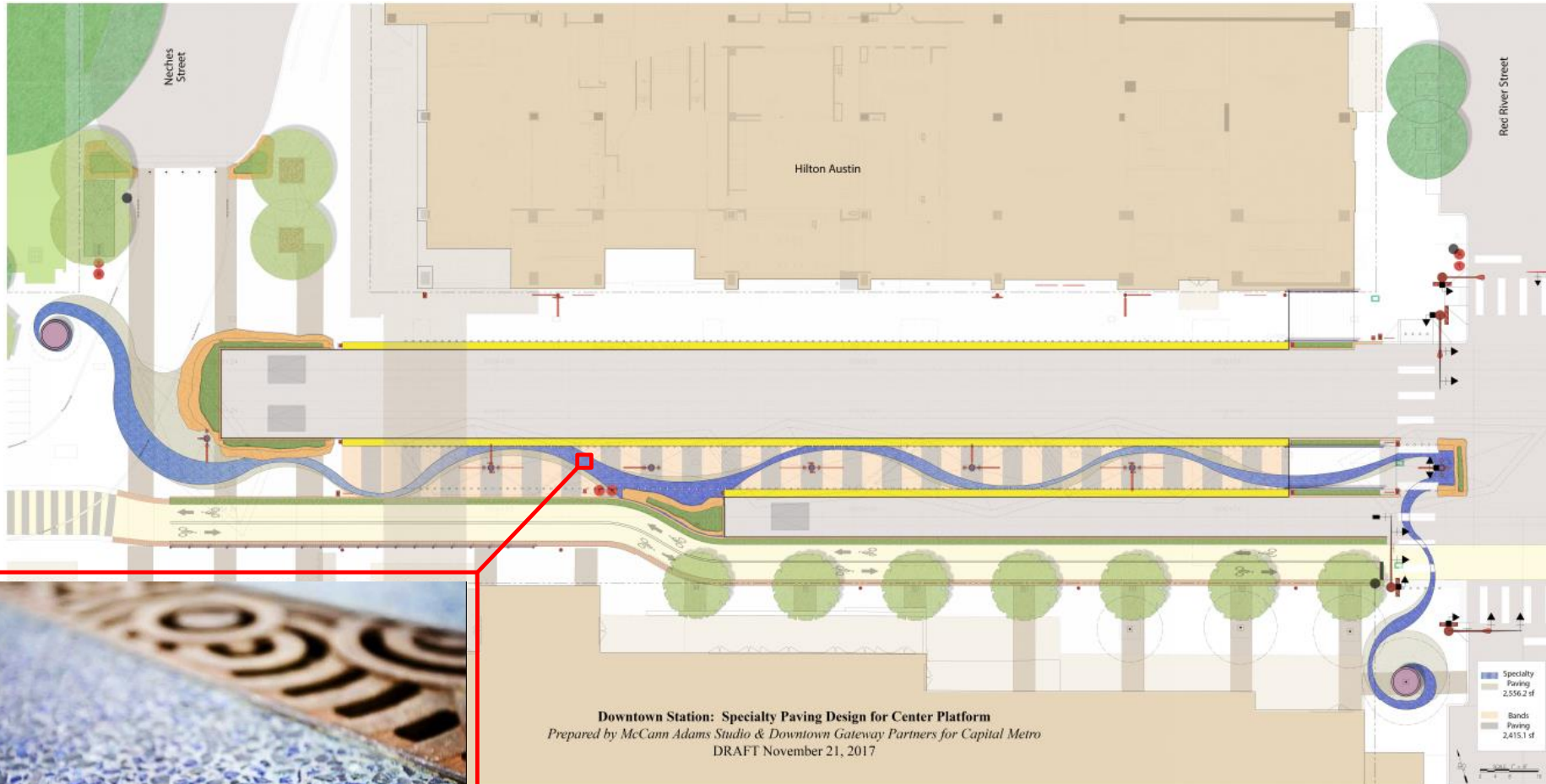
Mercat dels Encants (Barcelona, Spain)

Mercat dels Encants (Barcelona, Spain)



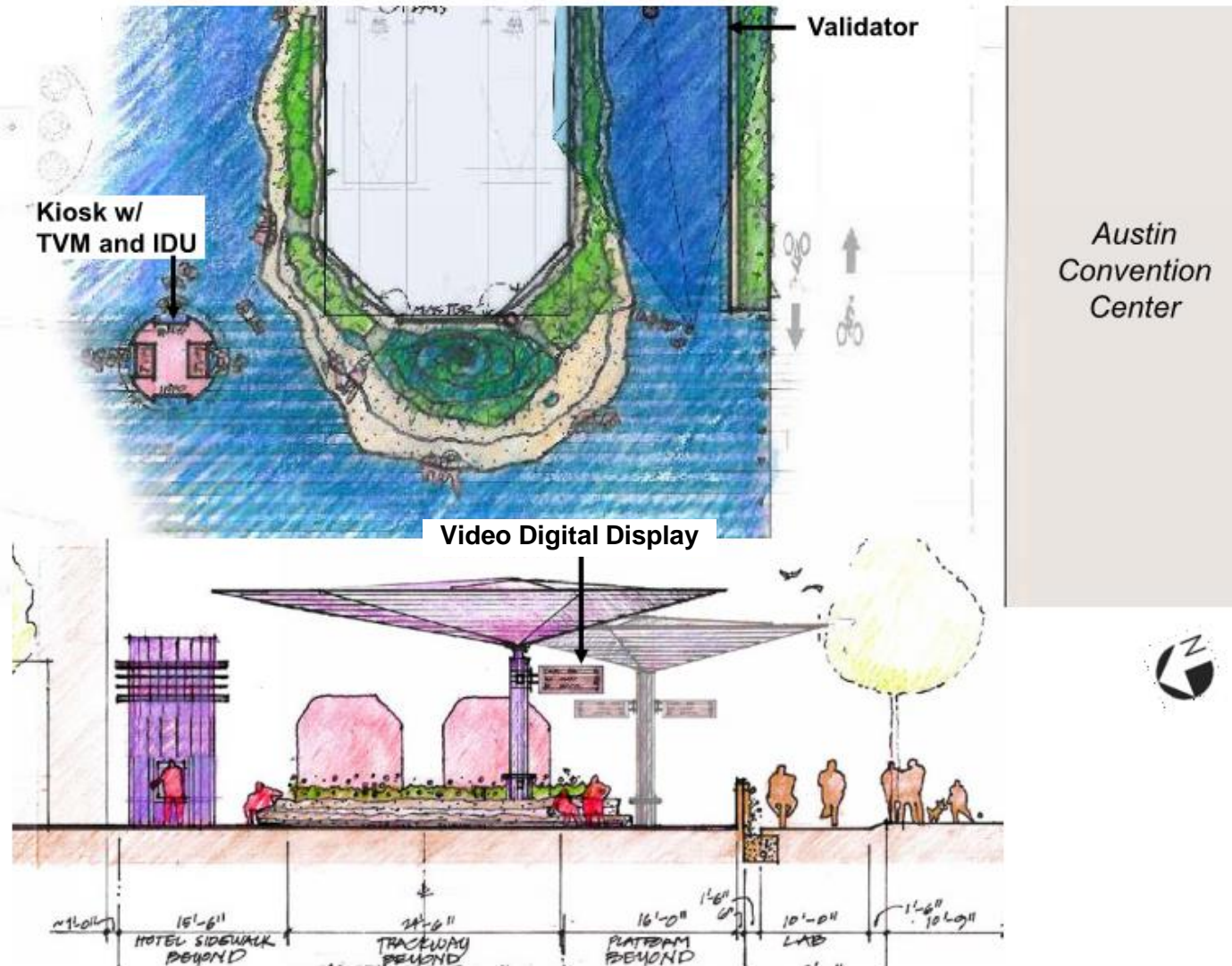
Decorative Paving at Platform

“Lithocrete” Paving



Example of Lithocrete Product
(final colors TBD)

“Stone Oasis” at Station Entry at Neches Street

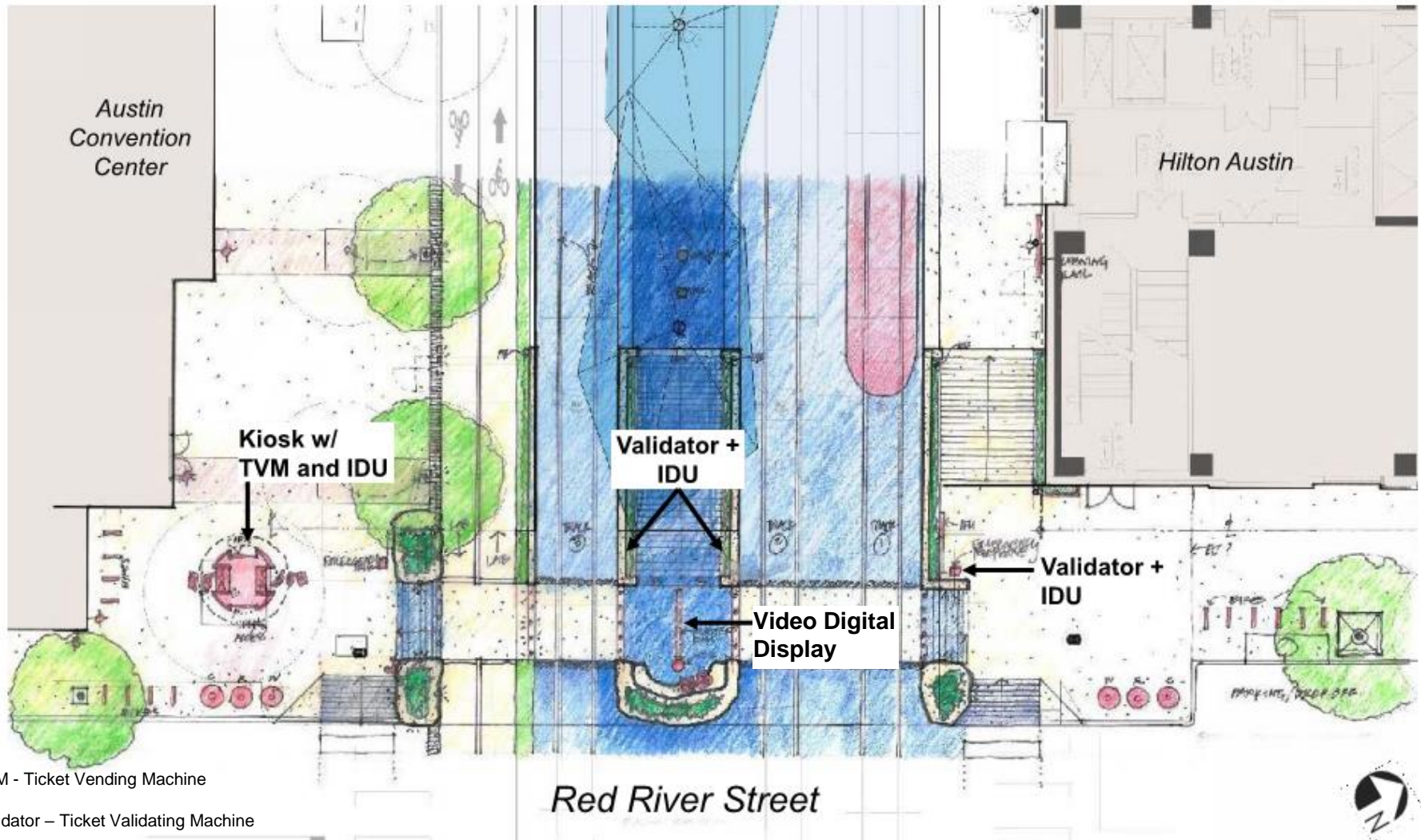


TVM - Ticket Vending Machine

Validator – Ticket Validating Machine

IDU – Information Display Unit (Static)

“Stone Oasis” at Station Entry at Red River Street



TVM - Ticket Vending Machine

Validator - Ticket Validating Machine

IDU - Information Display Unit (Static)

Entry Features



Examples of decorative stone seating with landscaping



Examples of decorative lighting at the ticketing kiosk

Plaza Design – “One Plaza, Many Opportunities”



PLAZA PROGRAMMING OPPORTUNITY - ONE



PLAZA PROGRAMMING OPPORTUNITY - TWO

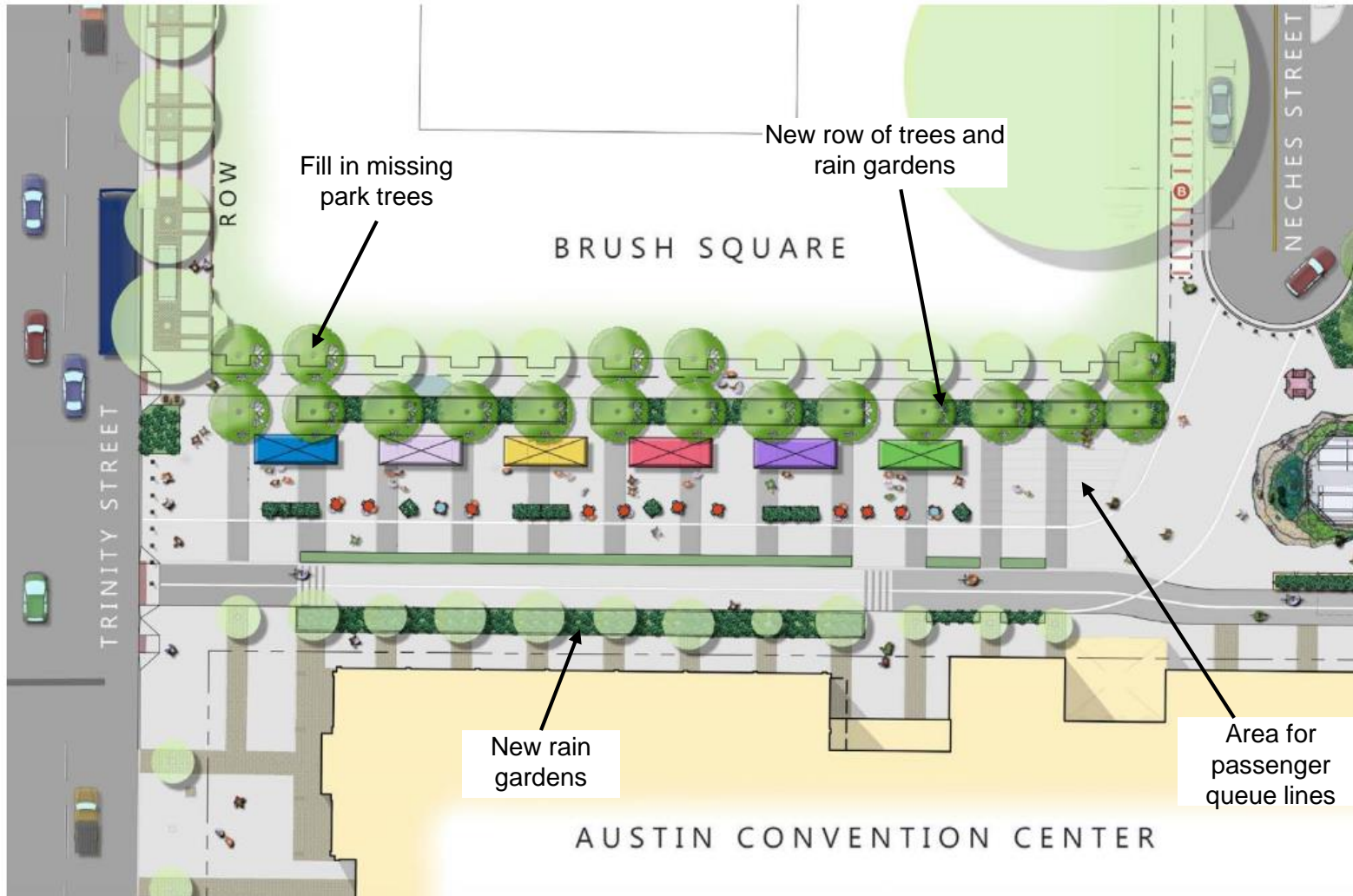


PLAZA PROGRAMMING OPPORTUNITY - THREE



Design process included open house events, City of Austin staff, CMTA staff/executives, community entities, Waller Creek Conservancy

Plaza Design

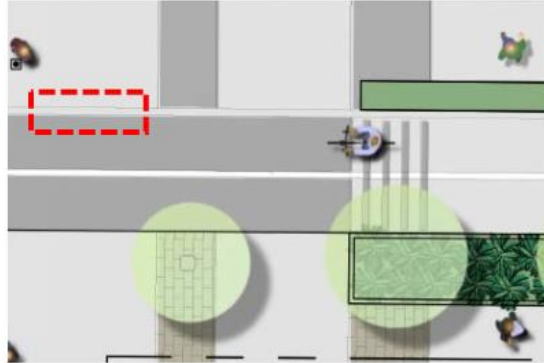


Site plan of proposed plaza between Trinity Street & Neches Street

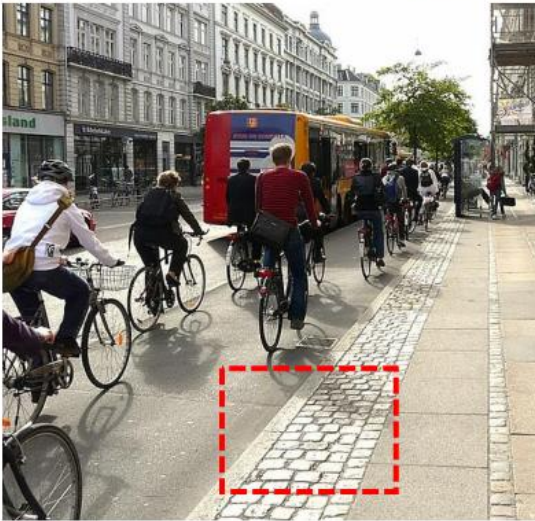
Plaza Designs

Bikeway and Crosswalk Details

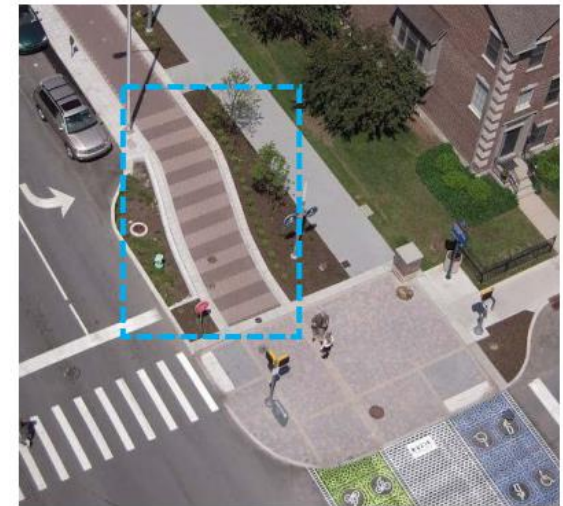
Bikeway Edge Treatment



Bikeway Pedestrian Crossing Paving



Examples of pavers delineating the edge of the bikeway path



Examples of clear pedestrian crossing identification

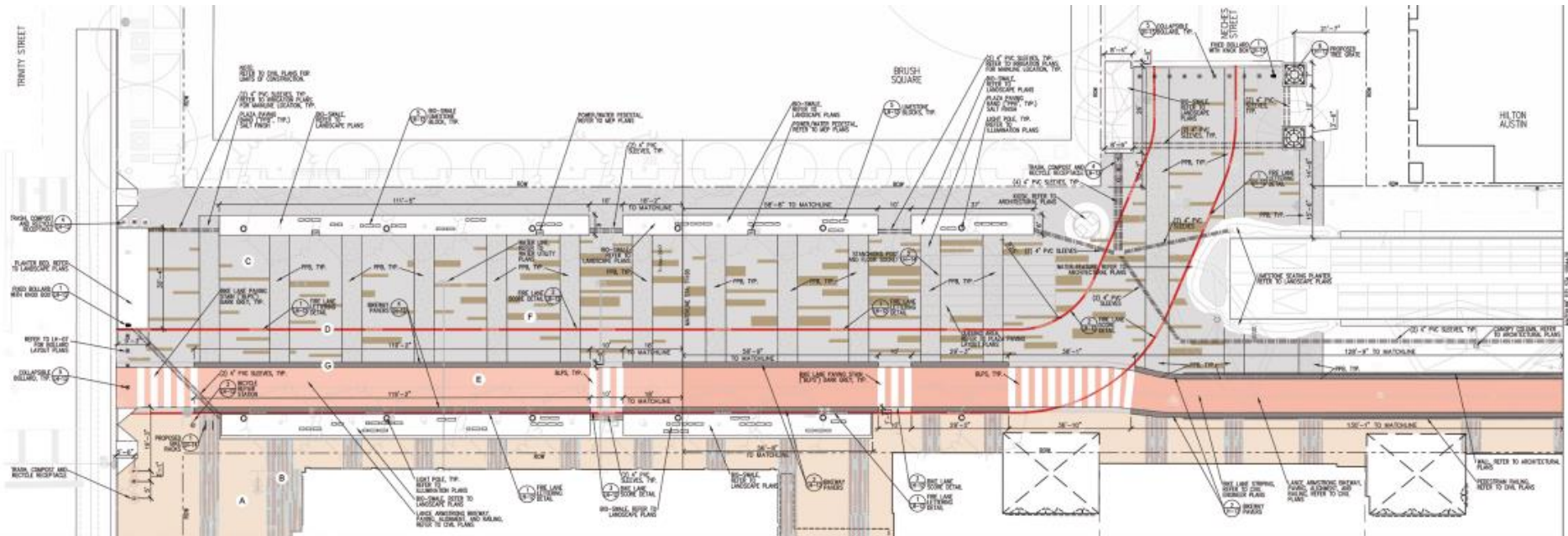
Plaza Designs



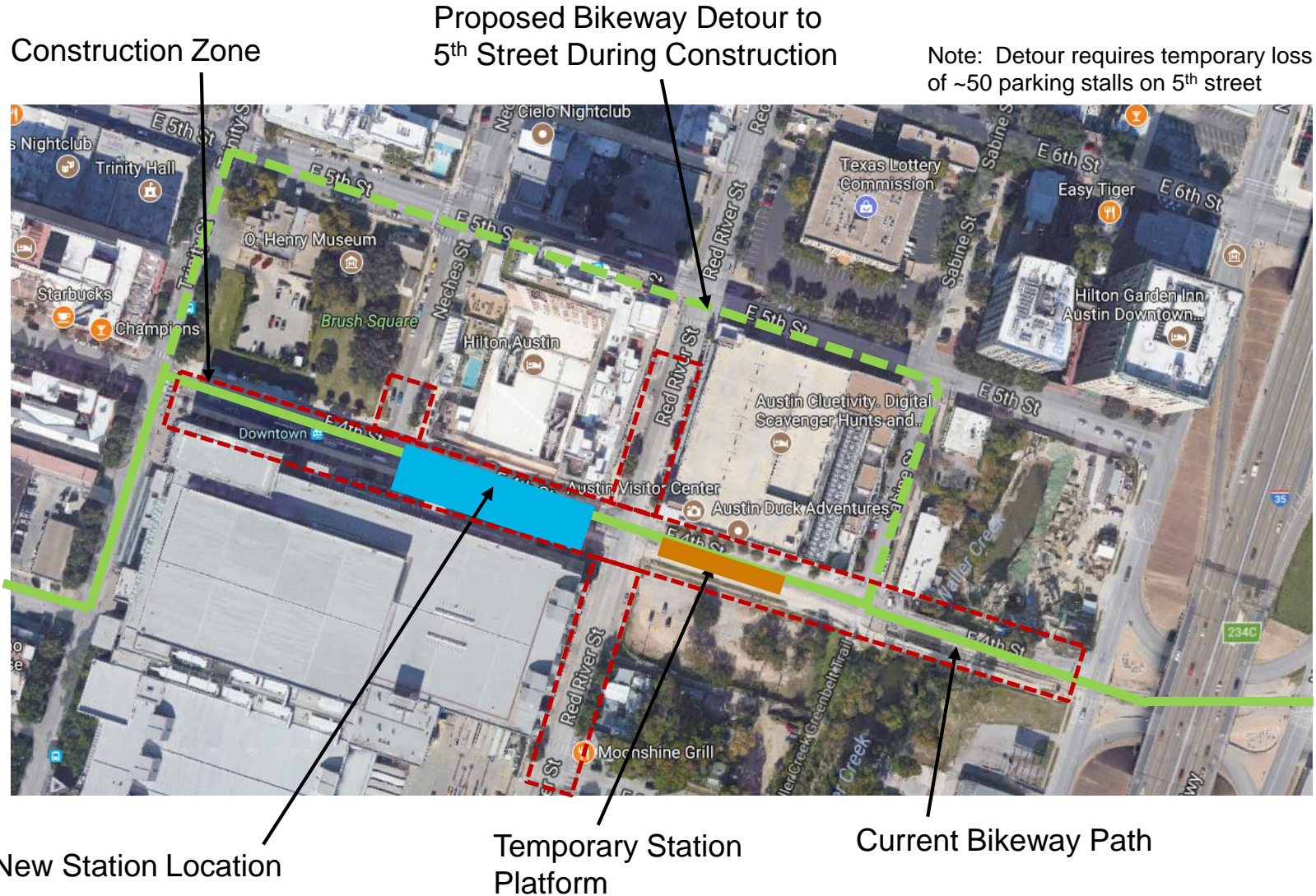
Examples of bioswales (“rain gardens”) at landscape areas



Examples of overhead pendant lighting in Plaza



Construction Phasing & Temporary Bikeway Detour

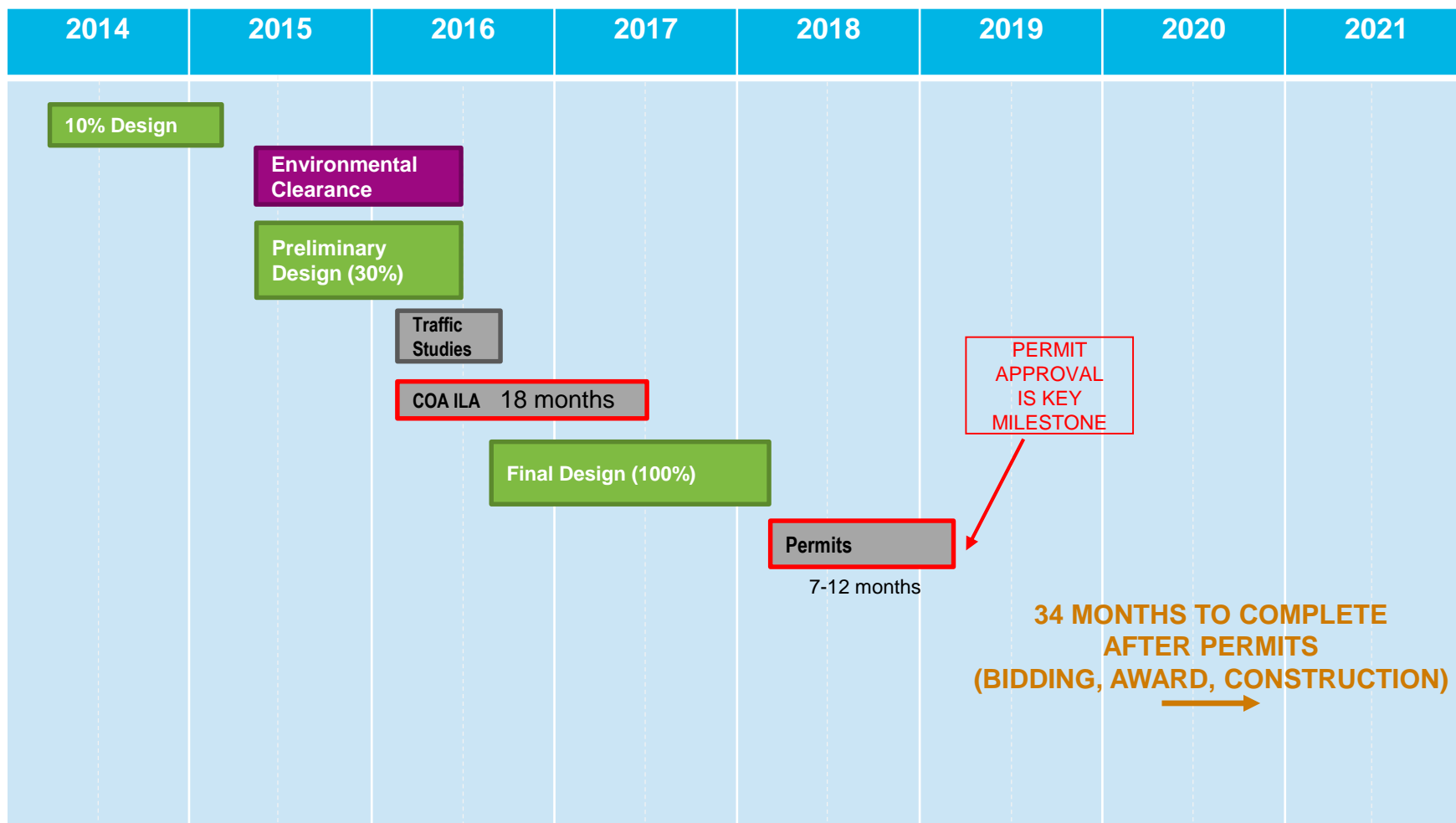


Current Project Timeline

Bidding & Construction Contingent on Timely Permits



METRORAIL



SCHEDULE CONTINGENCY INCLUDED ABOVE

Next Steps



- Informational meetings for bikeway detour
- Public open house
- Complete 100% designs & permitting
- Begin construction



Thank you

Capital Metro Project Manager:
Marcus A. Guerrero, AIA, PMP, LEED AP

Design Team: Downtown Gateway Partners
(joint venture with HNTB & Alliance Transportation Group)

For more information visit:
<https://www.capmetro.org/plans-development/>

Downtown Multimodal Station

