

# 2018 LOCAL MOBILITY ANNUAL PLAN (LMAP)

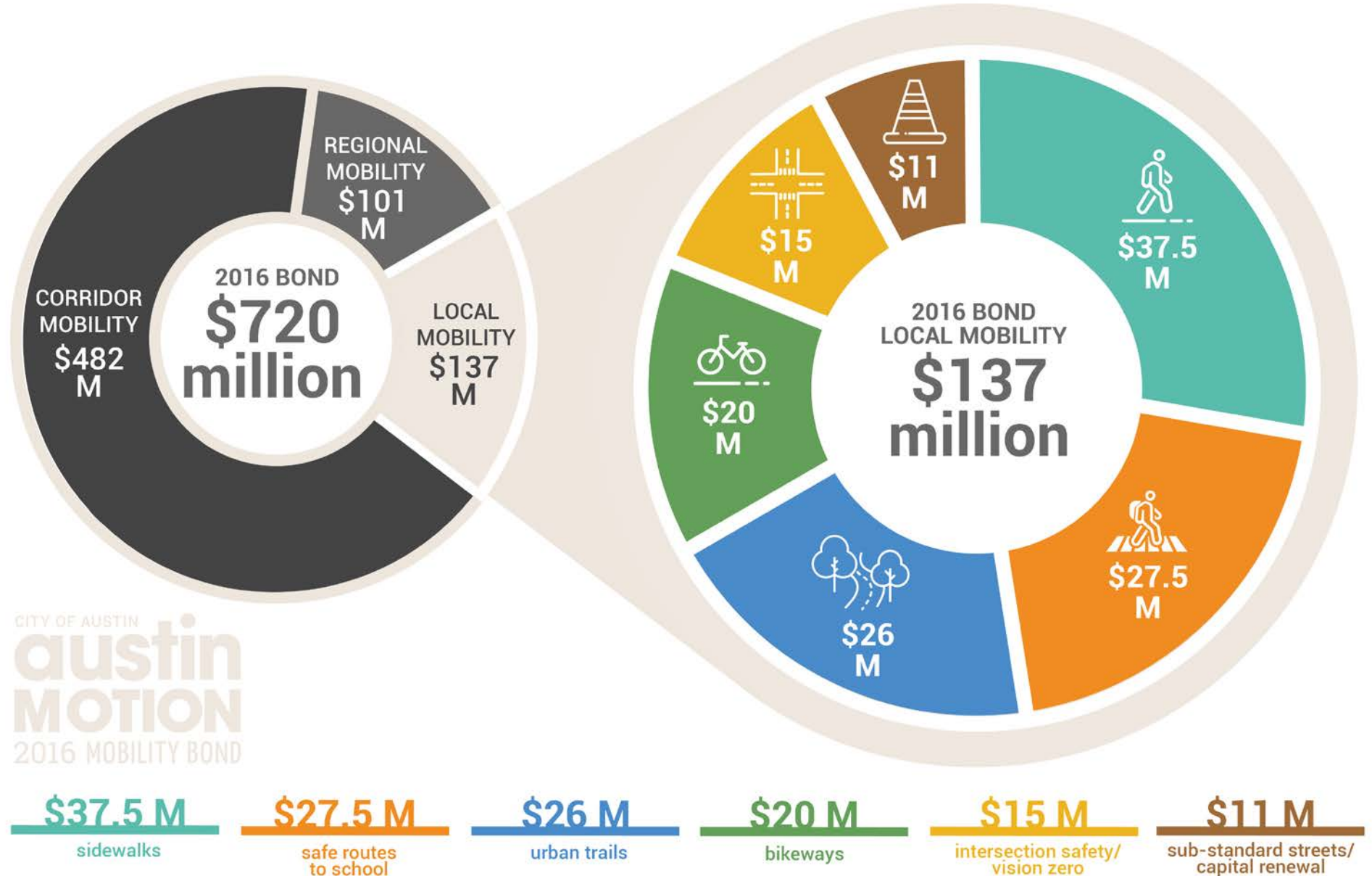
Bicycle Advisory Council Briefing



---

TUESDAY DECEMBER 19<sup>TH</sup>, 2017

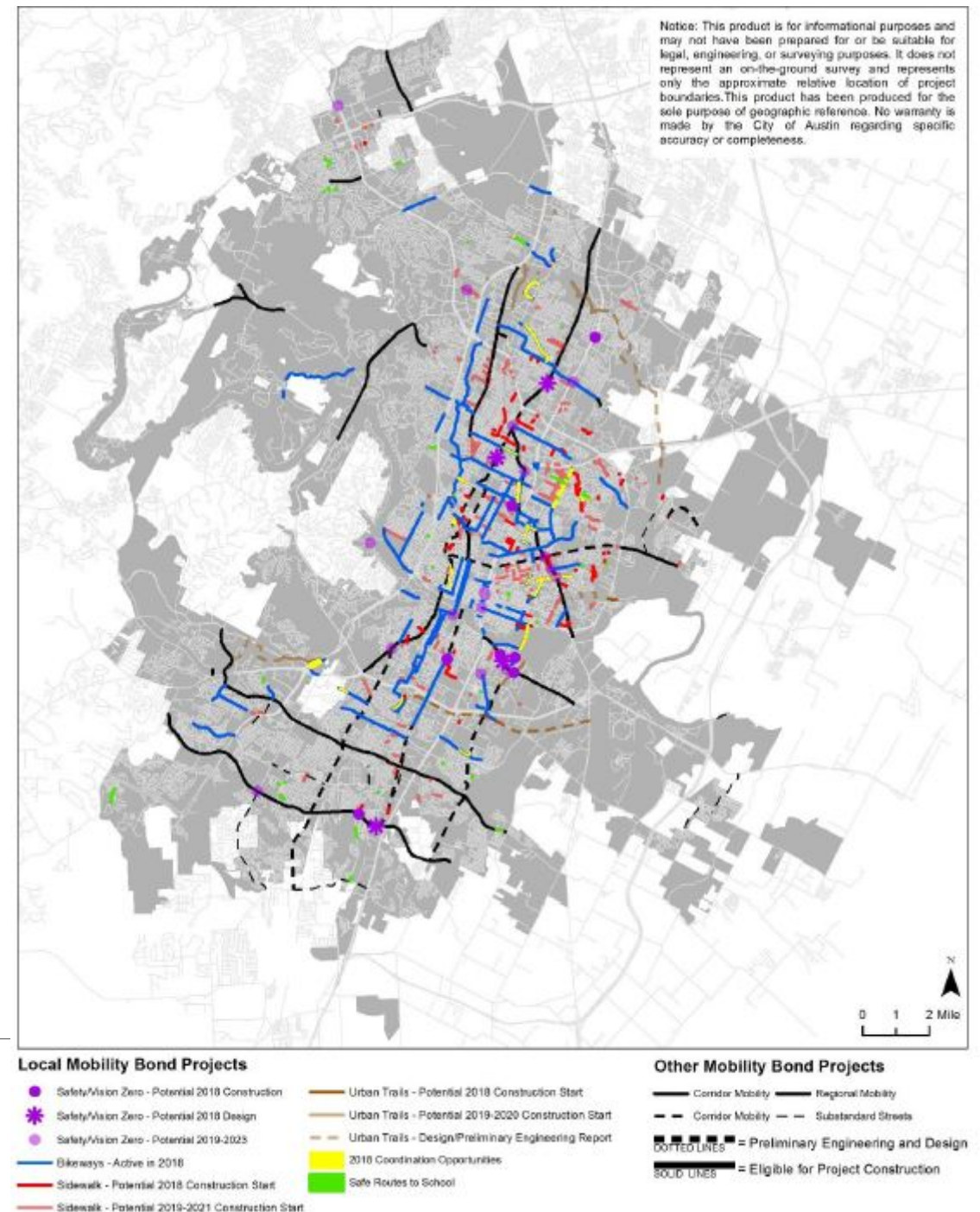
# 2016 MOBILITY BOND [ LOCAL MOBILITY BREAKDOWN ]



# WHAT IS THE LMAP?

- An annual coordination process among Local Mobility programs of the 2016 Mobility Bond;
- Designed to identify active transportation and safety projects for further development in the year ahead;
- Repeated annually to maintain flexibility, with transparency, accountability and responsiveness to the community.

## 2018 LMAP – BICYCLE ADVISORY COUNCIL BRIEFING



# AUSTINTEXAS.GOV/LMAP



View the  
LMAP Report



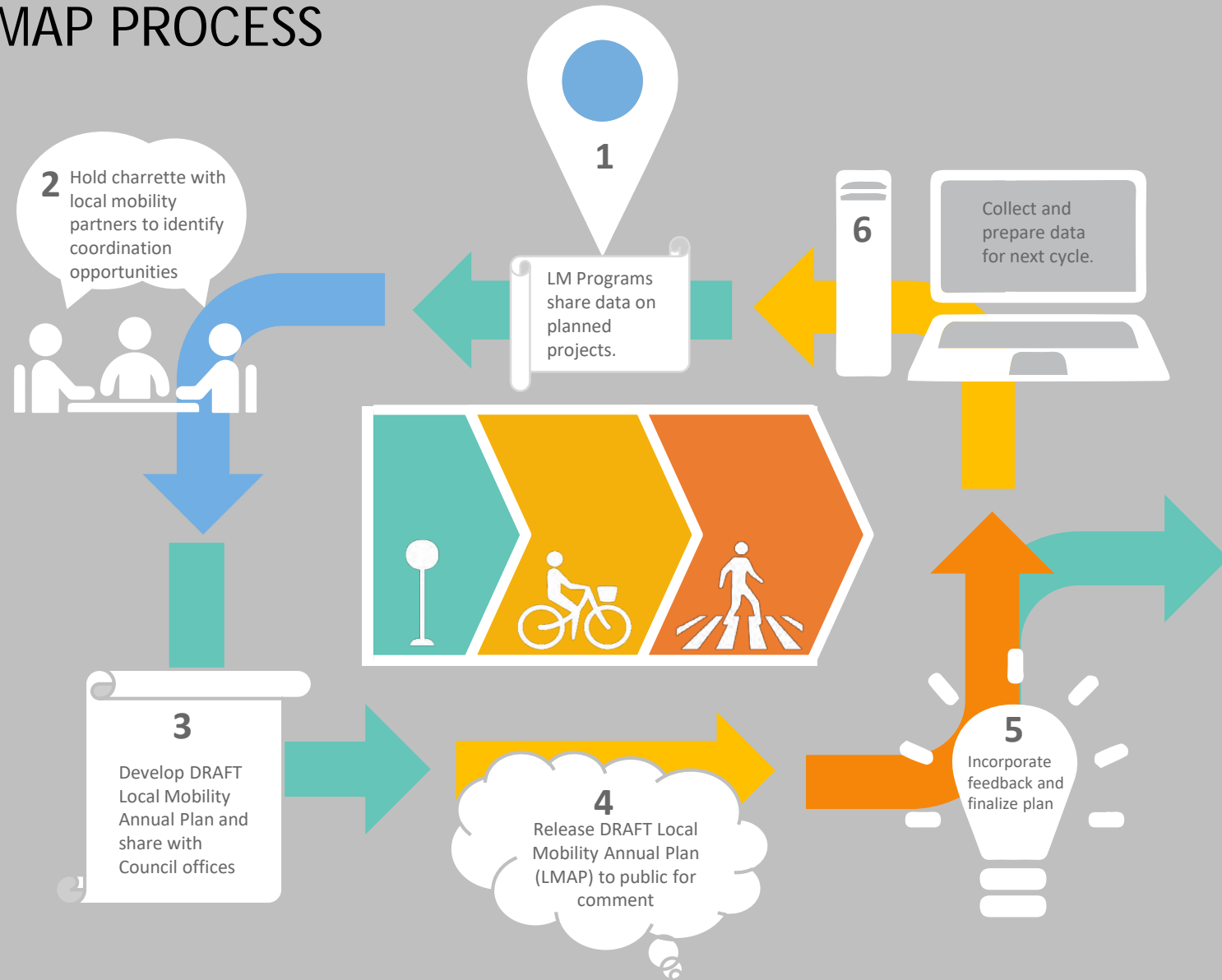
View the Interactive  
Project Map



Share Your  
Feedback



# LMAP PROCESS

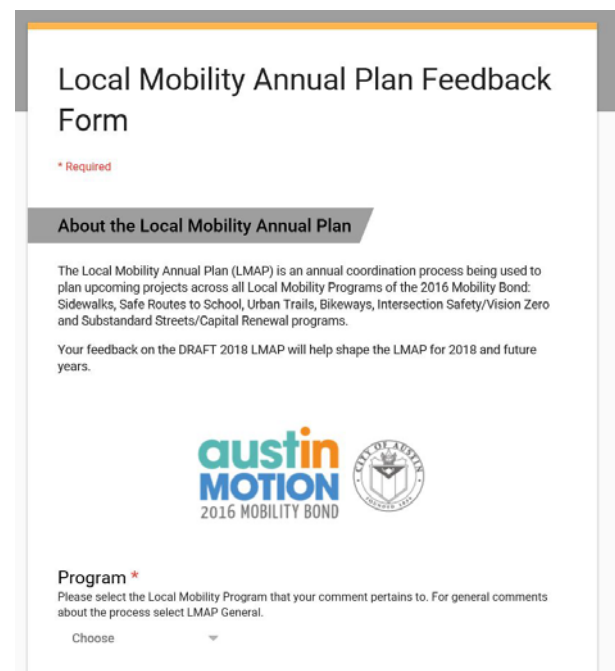
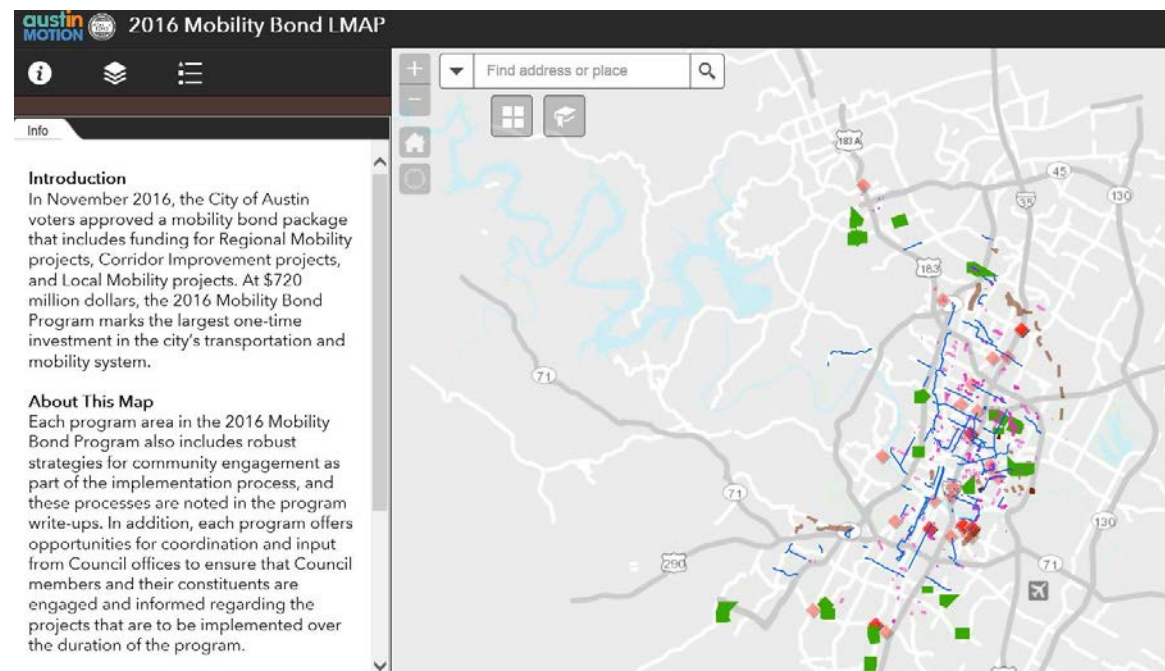


**Project Development and Delivery:** Project specific design, public process, and/or construction notification, installation.





# WEB MAP & FEEDBACK FORM





# CAPITAL PROJECT EXPLORER

capitalprojects.austintexas.gov

[austintexas.gov](#) [Get Updates](#) [FAQ](#)

74 Projects 100% On-Budget 100% On-Schedule

Home

All Projects

2016 BOND

Select All

Regional Mo...

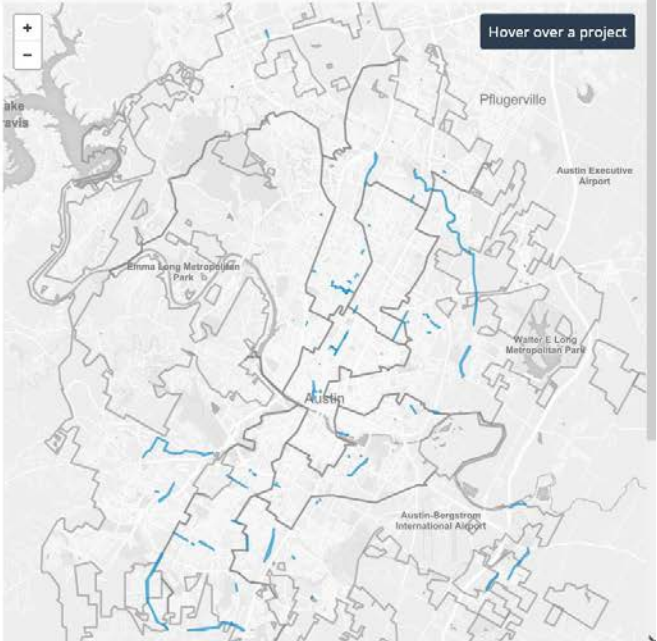
Corridor Mob...

Local Mobi...

COUNCIL DISTRICT

Project Name	Cost Status	Schedule Status
2016 Bond Sidewalk Program - Future Projects	✓	✓
2016 Bond Sidewalk Program - Program Management and Project Development	✓	✓
Akins High School - S 1st St Pedestrian Improvements	✓	✓
Berkman from 51st St. to HW 290 Mobility and Safety Improvements	✓	✓
Bikeway Improvements - 2016 Bond	✓	✓
Blazier Elementary - Nuckols Crossing Rd sidewalks	✓	✓
Brentwood Neighborhood ADA Sidewalk and Curb Ramp Improvements	✓	✓
Brodie Lane Improvements	✓	✓
Burton and Freidrich ADA Sidewalk and Curb Ramp Improvements	✓	✓
Chesterfield Ave ADA Sidewalk and Curb Ramp Improvements	✓	✓
Circle S Road Substandard Street Preliminary Engineering	✓	✓
Cooper Lane Substandard Street Preliminary Engineering	✓	✓
Country Club Creek Trail - Elmont Dr to E Oltorf St	✓	✓

Hover over a project





## LOCAL MOBILITY ANNUAL PLAN

2018

PUBLIC INPUT DRAFT



# COORDINATED PROJECTS



DRAFT 2018 LOCAL MOBILITY ANNUAL PLAN (LMAP)  
AUSTIN IN MOTION / CITY OF AUSTIN 2016 MOBILITY BOND



## COORDINATED PROJECTS

The 2018 LMAP represents the result of an annual coordinated process across all Local Mobility programs to maximize the ability deliver more complete projects. A number of coordinated projects are listed with a short description in the following section. Partnering programs are identified by their icon in the programs column with the lead program indicated at the top of each row.



Sidewalks



Safe Routes to School



Urban Trails






Bikeways



Safety/Vision Zero



Substandard Streets/Capital Renewal

PROJECT NAME	DESCRIPTION & LIMITS	LENGTH (MI)	PROGRAMS	COUNCIL DISTRICT(S)
34th	Randolph Road to Cherrywood Road. This street follows the proposed Red Line Trail alignment, a cross-town trail which runs parallel to Capital Metro's existing Red Line Commuter Rail. For this short section, the Urban Trails, Sidewalks and Bikeways programs will be partnering to look at potential options for connectivity for trail users. Potential options could include a behind the curb trail or an in-street bicycle and pedestrian path.	0.4	  	9

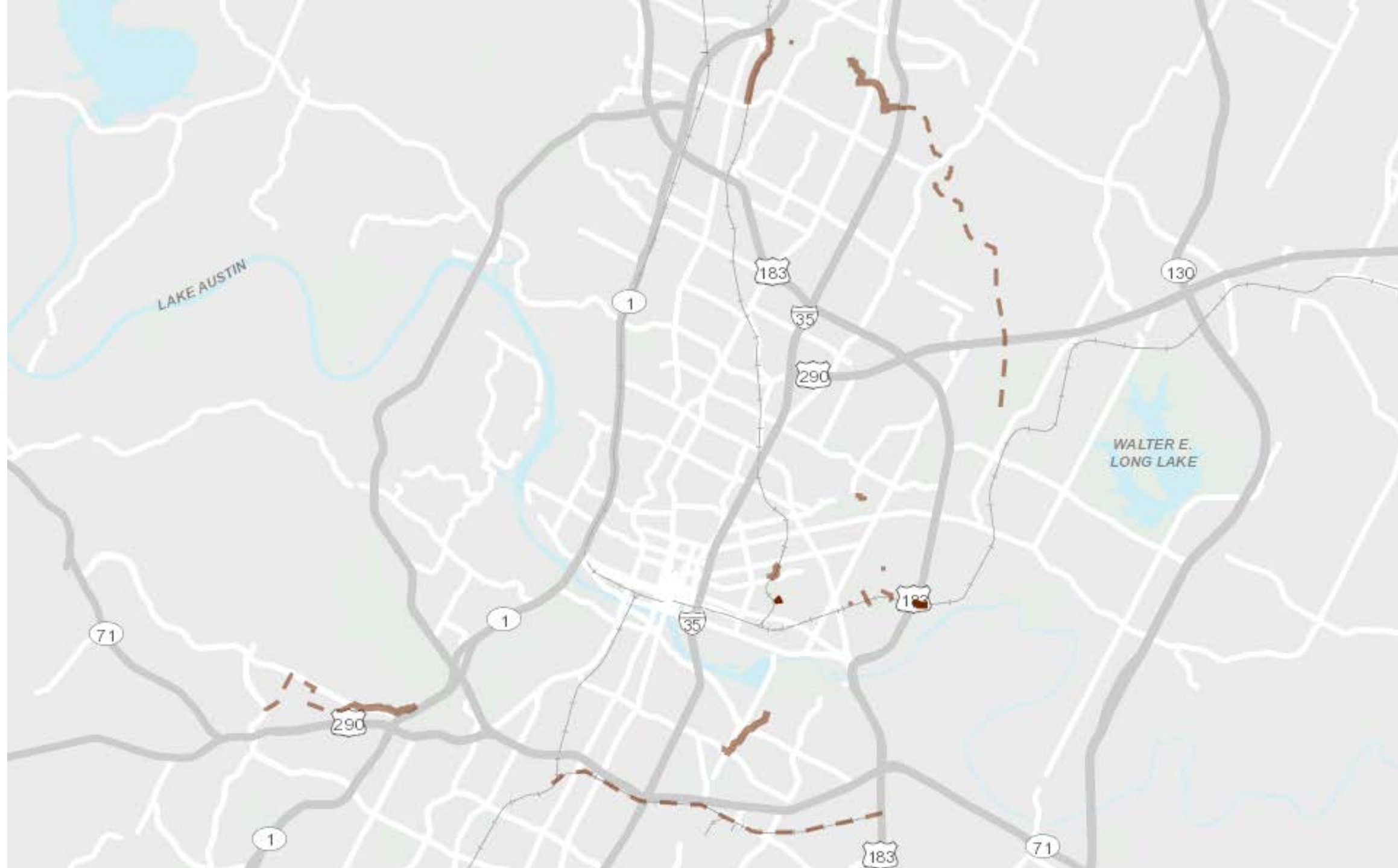


# PROGRAM OVERVIEWS

- Sidewalks Projects 2018 and 2019-2021
- Safe Routes to School
- Urban Trails
- Bikeways
- Intersection Safety/Vision Zero
- Substandard Streets & Capital Renewal

# URBAN TRAILS - 2016 BOND

Project	Budget	PER	Design	Construction
Country Club Creek Trail	\$6.75M	Complete	2019	2021
Shoal Creek Trail (5 <sup>th</sup> – 15 <sup>th</sup> ) <b>ON- HOLD</b>	\$2M	Complete	2019	Future \$
La Loma Trail	\$500k	2018	Future \$	Future \$
Redline Trail - Walnut Creek Trail to Braker	\$5M	2018	2019	2022
Northern Walnut Creek Trail Phase 2	\$2.5M	Complete	2018	2020
Northern Walnut Creek Trail Phase 3	\$1M	2018	Future \$	Future \$
Southern Walnut Creek Trail Renovation	\$1M	N/A	2017	2018
YBC Trail	\$6.5M	Complete	2019	2022
Urban Trail Connectors	\$0.75M		Ongoing	Ongoing
<b>TOTAL</b>	<b>\$26M</b>			





# BARTON CORRIDOR

## *YBC Trail*

- **\$6.5M for Design and Partial Construction**
- Approximately 1.5 mile
- UTMP – Tier I

## *Mopac Bridge over Gaines Creek*



- Coordinated project with Bikeways



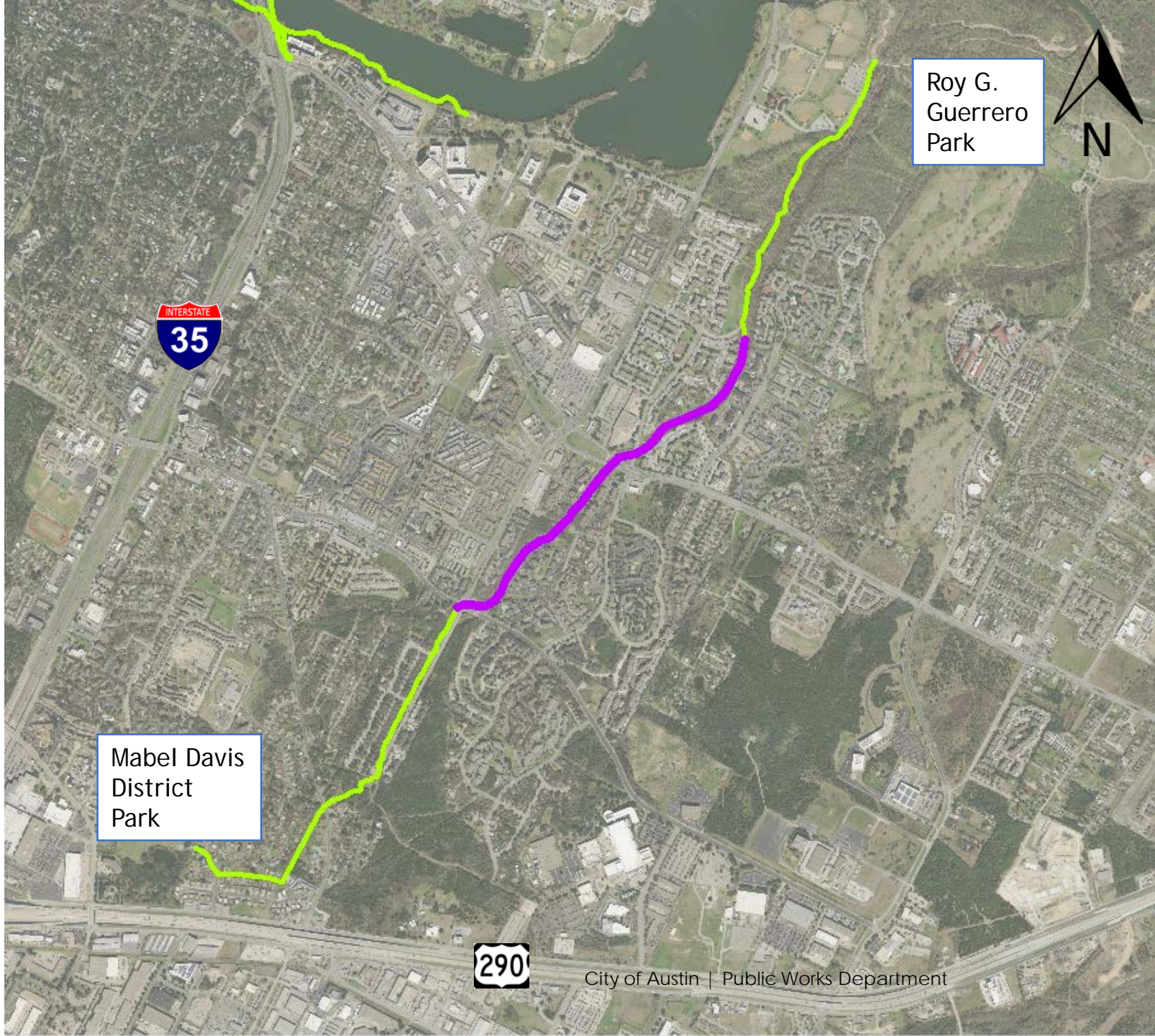


Proposed protected 2-way  
cycletrack on TxDOT shoulder

Proposed protected 2-way cycletrack on TxDOT shoulder

 Proposed Bike Improvements  
 MoPac Bridges Trail





Roy G.  
Guerrero  
Park



Mabel Davis  
District  
Park



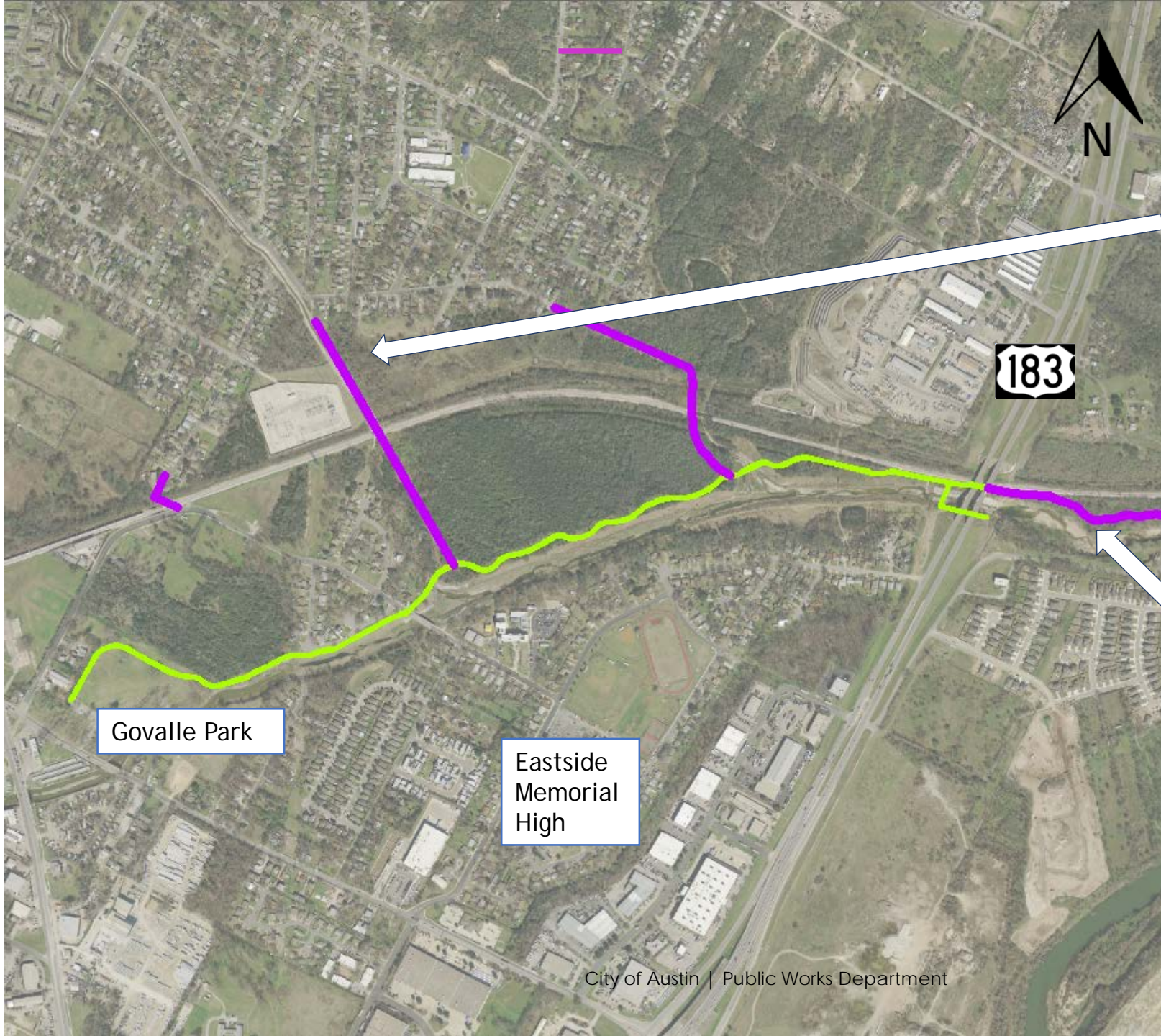
City of Austin | Public Works Department

# COUNTRY CLUB CREEK TRAIL

## *CCC Phases 2 & 3*

- **\$6.75 M for Design and Construction**
- Approximately 1 Mile
- UTMP- Tier I





# Walnut Creek Trail

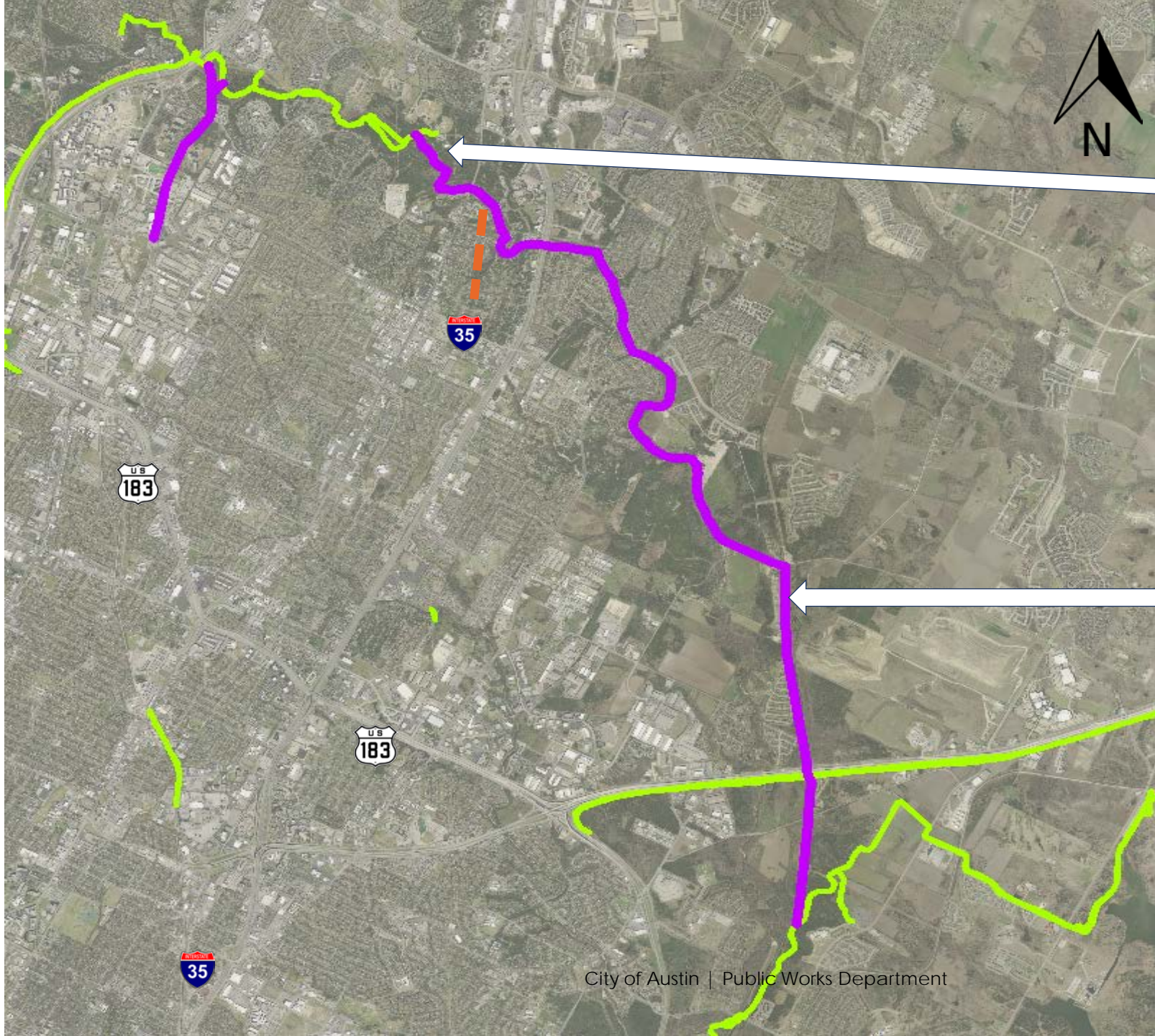
## **LA LOMA**

- **Funded through PER -500K**
- Three potential connections
- Alternative 1 – 0.5 Mile
- UTMP- Tier I

## **SWCT Renovation**

- **Funded through Construction - \$1M**





# Walnut Creek Trail

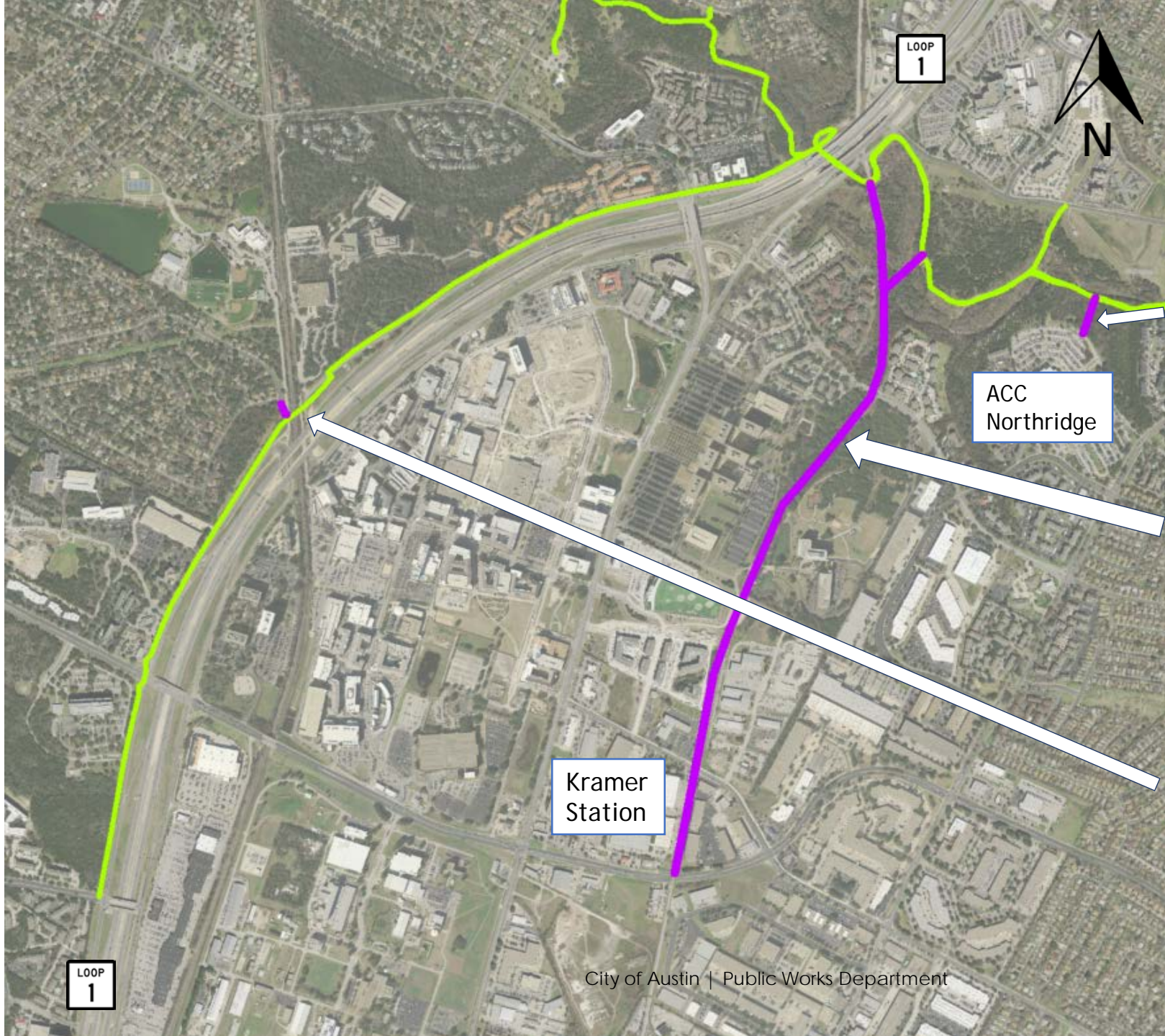
## NWCT PH 2

- **Funded through construction - \$2.5M**
- Approximately 1.8 Miles
- UTMP Tier I

## NWCT PH 3

- **Funded through PER - \$1M**
- Approximately 7 miles
- UTMP- Tier I





# RED LINE TRAIL

## *ACC Northridge Connector*

- Potential connector

## *Red Line -NWCT to Braker*

- **Funded through construction - \$5M**
- Approximately 1.5 Miles
- UTMP – Tier I

## *Calle Verde Drive Connector*

- Potential connector



# SHOAL CREEK TRAIL

---

## *Shoal Creek 5<sup>th</sup> to 15<sup>th</sup> Design*

- **ON-HOLD** – Approved through Change Control Process
  - Approximately 1 Mile
  - UTMP Tier I
- 

## *Shoal Creek Trail Improvements*





## NORTH AUSTIN AREA

---

### *Woods of Century Park Connector*

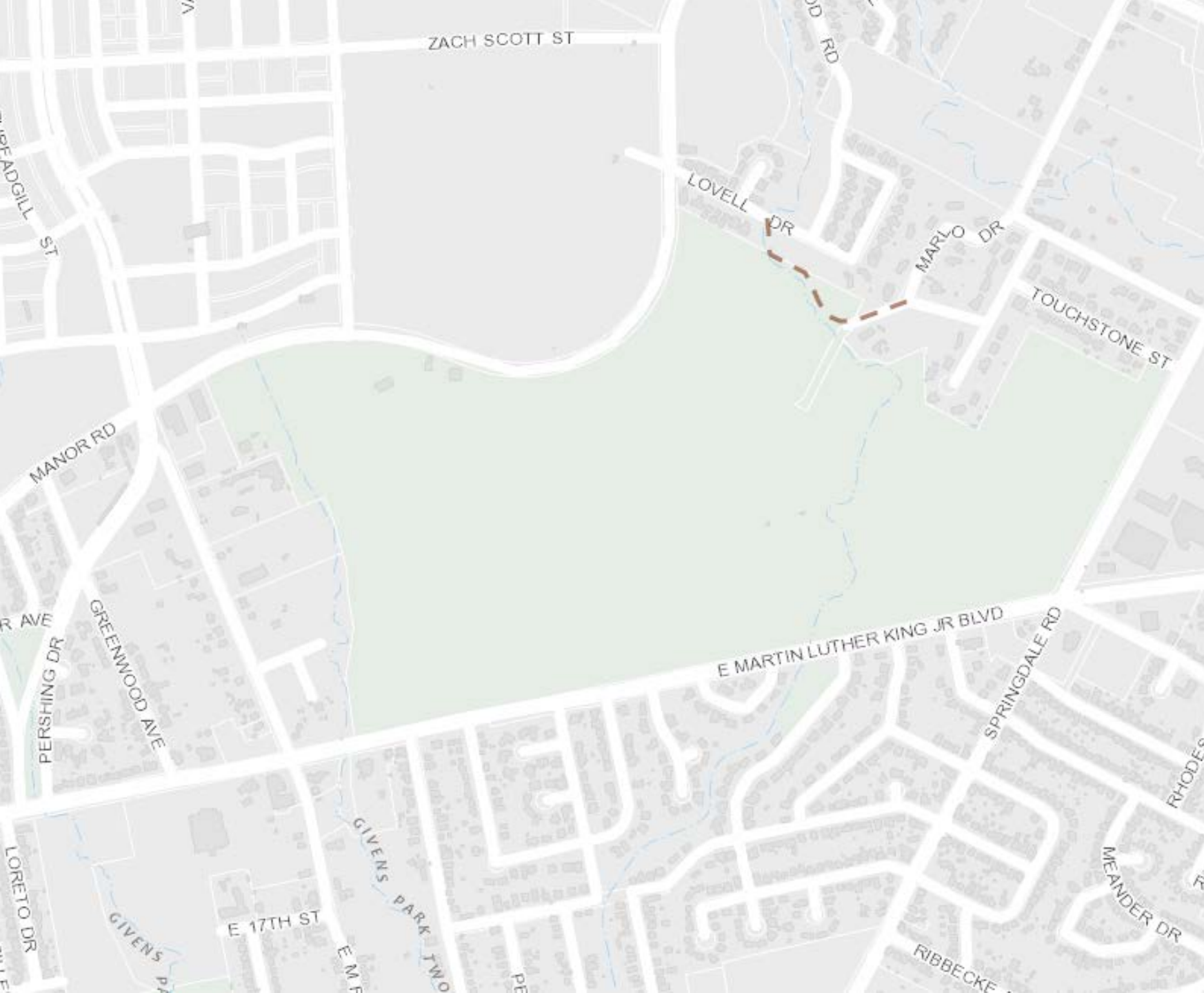
- Potential neighborhood connection
- UTMP – Tier I

# NORTH AUSTIN AREA

---

## *Woods of Century Park Connector*

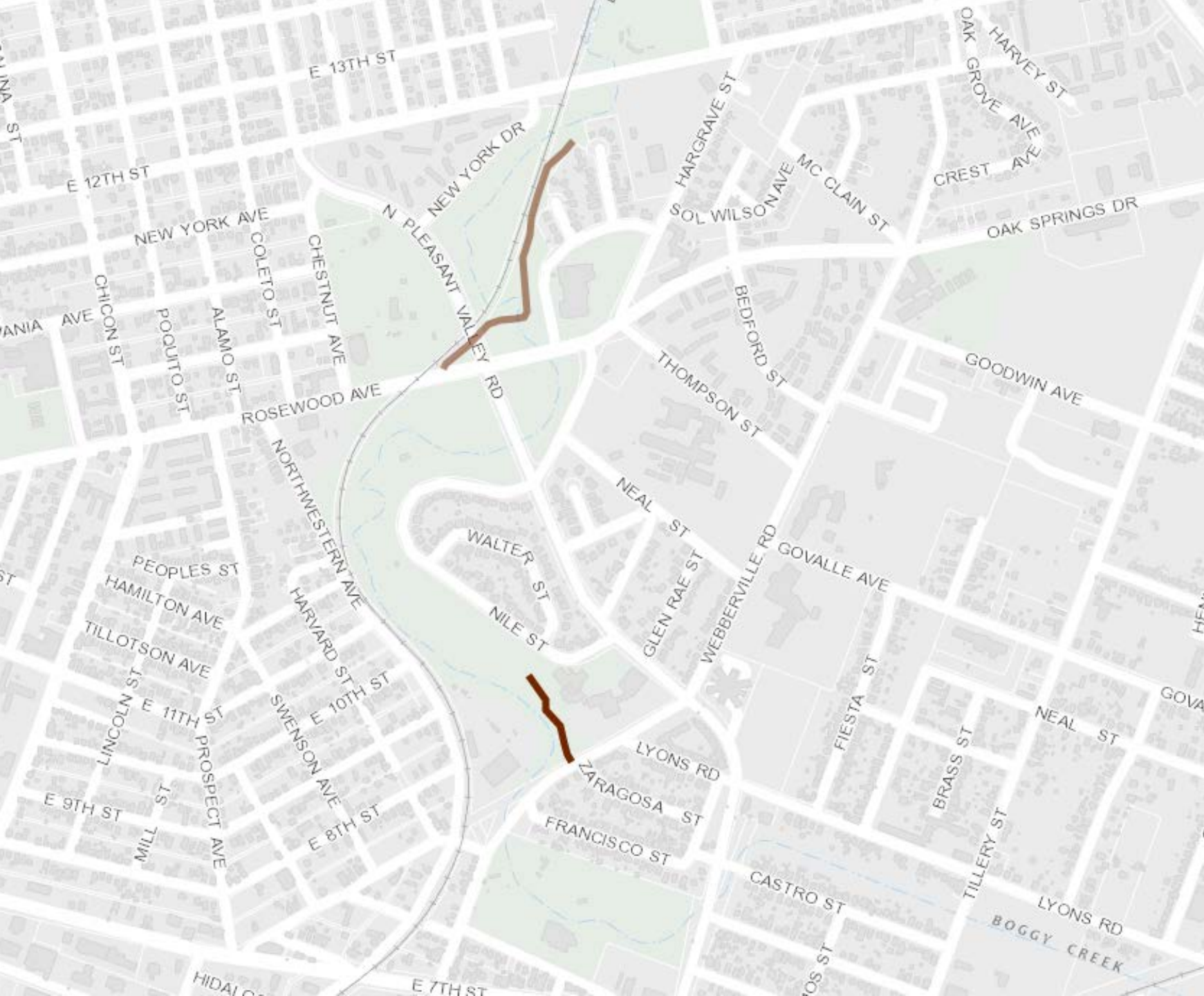
- Potential neighborhood connection
- UTMP – Tier I



# MUELLER AREA

## ***Morris Williams Golf Course Trail***

- Potential neighborhood connector
- UTMP – Tier II



## RED LINE TRAIL

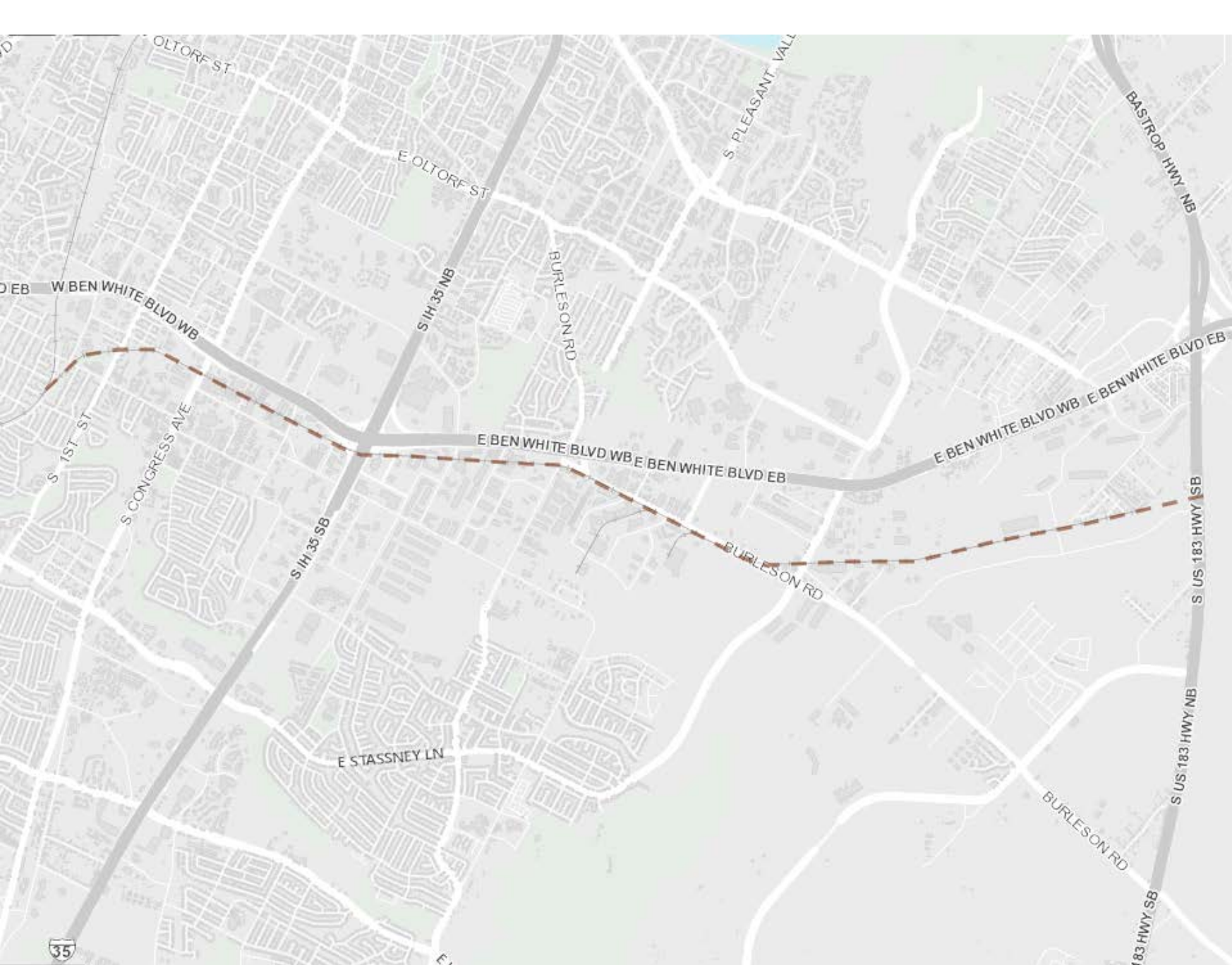
### *Boggy Creek Trail*

- Potential trail segment
- UTMP – Tier I

### *Webberville Connector*

- **No longer included in 2018 LMAP- completed in 2017**
- UTMP – Tier I





# Bergstrom Spur

## *Bergstrom Spur*

- Planning and ROW Acquisition
- UTMP Tier 1



# BIKEWAYS

- \$20M for bikeways for transportation and mobility purposes
- 6 year program
- Project prioritization through a Bicycle Implementation Framework



# BICYCLE PRIORITIZATION

Factors used to prioritize projects are as follows:

<u>Support of Bike Plan Goals</u>	<u>Support Bike Plan Sub Goals</u>	<u>Other Prioritization Criteria</u>
<ul style="list-style-type: none"> <li>• Increase ridership (4)</li> <li>• Improve safety (2)</li> <li>• Increase connectivity (1)</li> <li>• Support equity (9)</li> <li>• Support of Imagine Austin</li> </ul>	<ul style="list-style-type: none"> <li>• Create an All Ages and Abilities Network (6)</li> <li>• Remove barriers in Network (3)</li> <li>• Integrate and support transit (7)</li> <li>• Expand the bike share system</li> </ul>	<ul style="list-style-type: none"> <li>• Support affordability (8)</li> <li>• Degree of public support</li> <li>• Support of modal plans</li> <li>• Support of other programs</li> <li>• Opportunity to coordinate</li> <li>• Competitive cost-benefit</li> <li>• Policy directives</li> <li>• Network buildout (5)</li> </ul>

*(#) denotes the rank of the top priorities identified through the Implementation Framework public process.*



# BIKEWAYS PROJECTS

- All Ages and Abilities Priority Projects
- Priority Barrier Projects
- Multimodal Coordination Projects



# THANK YOU

THE 2016 MOBILITY BOND LOCAL MOBILITY PROGRAM TEAM

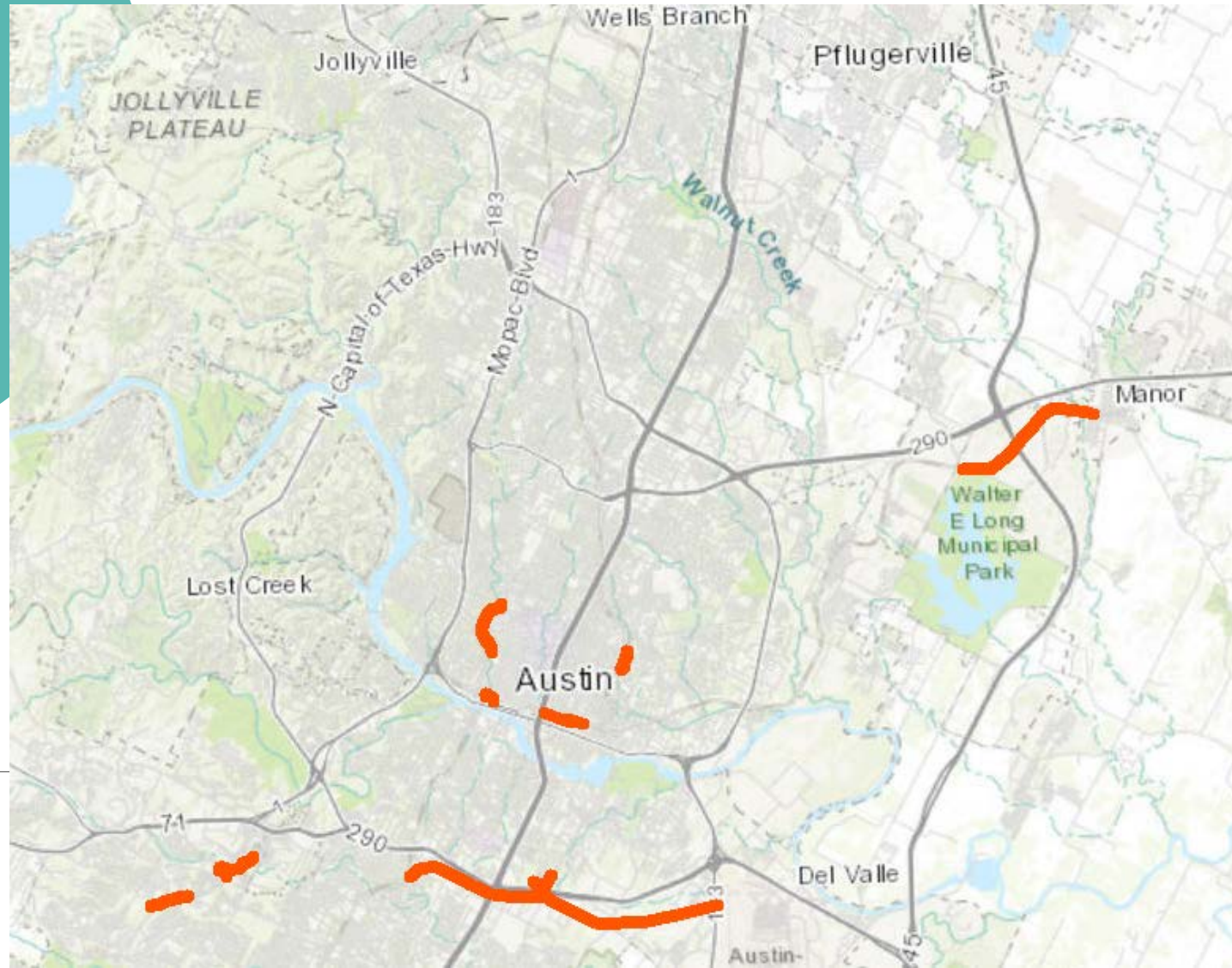




# URBAN TRAILS -OTHER

Project	Funded Through	Estimate	Status
Shoal Creek Gap Project (0.15 Miles)	Construction	\$7M	90% Construction
Violet Crown Trail South (0.75 Miles)	Construction	\$1.8M	50% Construction
Country Club Trail -Burleson to Ventura (0.5 Miles)	Construction	\$1M	0% Construction
Upper Boggy Creek (0.5 Miles)	Construction	\$4M	0% Construction
NWCT Ph 1-A (0.5 Miles)	Construction	\$1.25M	Bidding
Violet Crown Trail North (1 Mile)	Construction	\$1.7M	60% Design
Austin to Manor Ph 2 (3 Miles)	Design	\$5M	95% Design
Pleasant Valley Bridge	PER	TBD	0% PER
LAB –Plaza Saltillo (0.5 Miles) (Developer)	Construction	N/A	0% Construction
Redline Trail through Avery Ranch (0.75 Miles) (Developer)	Construction	N/A	0% Construction

# URBAN TRAILS -OTHER



# URBAN TRAILS -COMBINED

