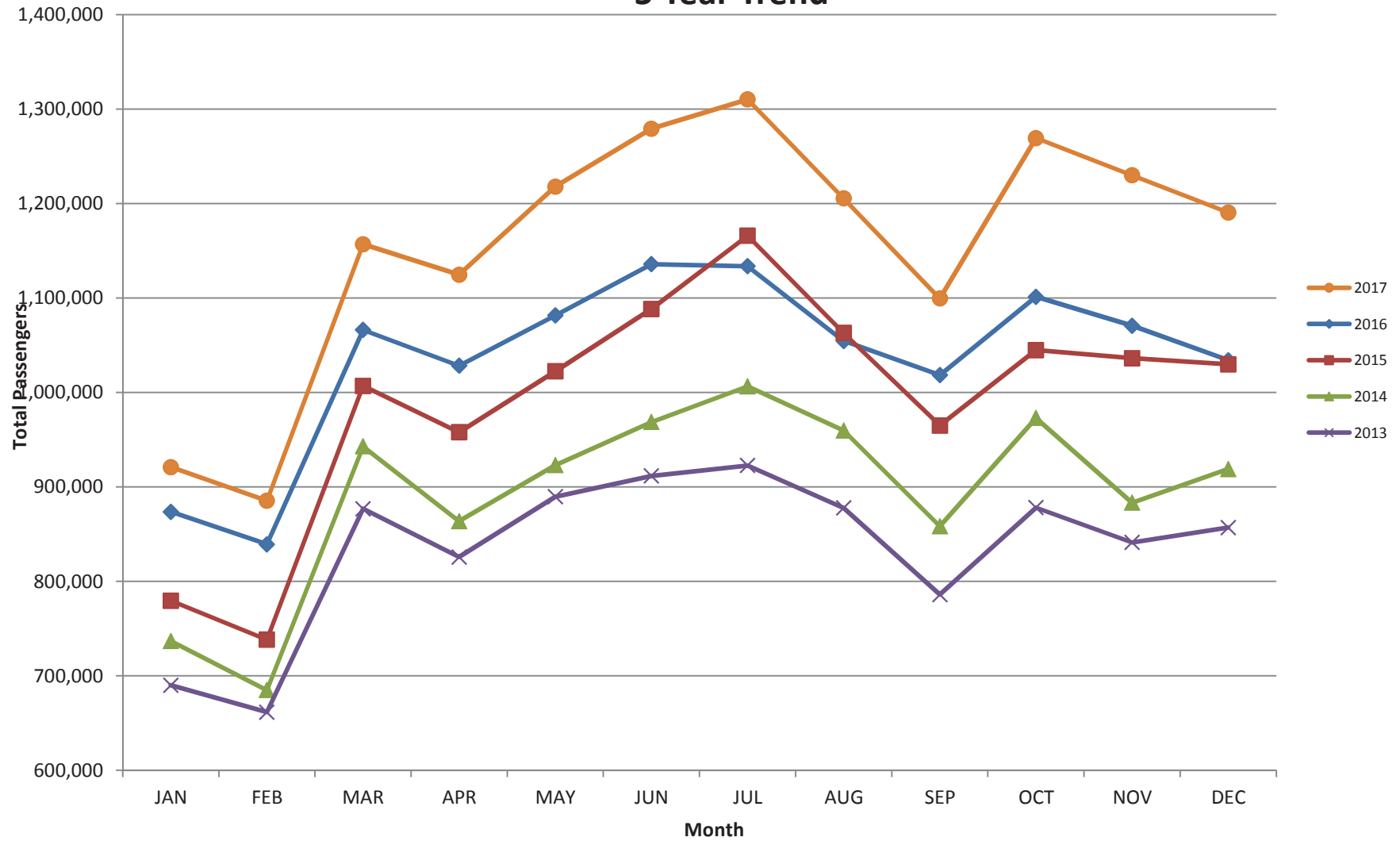


AUSTIN PASSENGER TRAFFIC 5 Year Trend



**Austin-Bergstrom International Airport
Aviation Activity Report
Calendar Year 2017 vs 2016**

Combined Terminals

	12/2017	12/2016	Percent Change	01/2017 - 12/2017	01/2016 - 12/2016	Percent Change
ABIA						
Total Passenger Activity						
Domestic Enplaned Revenue	571,768	501,413	14.03	6,538,285	5,960,465	9.69
Domestic Deplaned Revenue	541,042	483,986	11.79	6,489,151	5,937,917	9.28
International Enplaned Revenue	12,014	12,072	-0.48	143,011	112,910	26.66
International Deplaned Revenue	10,873	10,915	-0.38	142,708	118,184	20.75
Domestic Enplaned Non-Revenue	13,395	11,074	20.96	161,702	131,708	22.77
Domestic Deplaned Non-Revenue	12,809	11,020	16.23	154,379	131,465	17.43
International Enplaned Non-Revenue	99	66	50.00	1,181	939	25.77
International Deplaned Non-Revenue	96	64	50.00	1,007	928	8.51
Intl Enplaned Pre-Cleared Revenue	1,729	1,557	11.05	20,158	19,673	2.47
Intl Deplaned Pre-Cleared Revenue	1,802	1,834	-1.74	21,316	22,034	-3.26
Intl Enplaned Pre-Cleared Non-Revenue	17	29	-41.38	276	307	-10.10
Intl Deplaned Pre-Cleared Non-Revenue	29	37	-21.62	291	319	-8.78
South Terminal Domestic Enplaned Revenue	12,848	0	0.00	108,451	0	0.00
South Terminal Domestic Deplaned Revenue	11,985	0	0.00	107,309	0	0.00
South Terminal Domestic Enplaned Non-Revenue	3	0	0.00	51	0	0.00
South Terminal Domestic Deplaned Non-Revenue	4	0	0.00	29	0	0.00
ABIA Passenger Totals	1,190,513	1,034,067	15.13	13,889,305	12,436,849	11.68
<i>ABIA Enplaned Passenger Totals</i>	<i>611,873</i>	<i>526,211</i>	<i>16.28</i>	<i>6,973,115</i>	<i>6,226,002</i>	<i>12.00</i>
<i>ABIA Deplaned Passenger Totals</i>	<i>578,640</i>	<i>507,856</i>	<i>13.94</i>	<i>6,916,190</i>	<i>6,210,847</i>	<i>11.36</i>
<i>ABIA Domestic Passenger Totals</i>	<i>1,163,854</i>	<i>1,007,493</i>	<i>15.52</i>	<i>13,559,357</i>	<i>12,161,555</i>	<i>11.49</i>
<i>ABIA International Passenger Totals</i>	<i>26,659</i>	<i>26,574</i>	<i>0.32</i>	<i>329,948</i>	<i>275,294</i>	<i>19.85</i>

CURRENT PASSENGER RECORD = 1,310,174 RECORD SET = JULY 2017

Total Aircraft Operations

Air Carrier	10,608	9,540	11.19	123,441	113,427	8.83
Commuter & Air Taxi	1,311	1,258	4.21	15,334	16,322	-6.05
Military	557	603	-7.63	9,619	10,354	-7.10
General Aviation						
Itinerant	3,356	3,429	-2.13	48,881	49,213	-0.67
Local	124	150	-17.33	2,357	2,716	-13.22
Total G.A.	3,480	3,579	-2.77	51,238	51,929	-1.33
Total Operations	15,956	14,980	6.52	199,632	192,032	3.96

**Austin-Bergstrom International Airport
Aviation Activity Report
Calendar Year 2017 vs 2016**

By Terminal

	12/2017	12/2016	Percent Change	01/2017 - 12/2017	01/2016 - 12/2016	Percent Change
<u>Barbara Jordan Terminal (BJT)</u>						
Passenger Activity						
Domestic Enplaned Revenue	571,768	501,413	14.03	6,538,285	5,960,465	9.69
Domestic Deplaned Revenue	541,042	483,986	11.79	6,489,151	5,937,917	9.28
International Enplaned Revenue	12,014	12,072	-0.48	143,011	112,910	26.66
International Deplaned Revenue	10,873	10,915	-0.38	142,708	118,184	20.75
Domestic Enplaned Non-Revenue	13,395	11,074	20.96	161,702	131,708	22.77
Domestic Deplaned Non-Revenue	12,809	11,020	16.23	154,379	131,465	17.43
International Enplaned Non-Revenue	99	66	50.00	1,181	939	25.77
International Deplaned Non-Revenue	96	64	50.00	1,007	928	8.51
Intl Enplaned Pre-Cleared Revenue	1,729	1,557	11.05	20,158	19,673	2.47
Intl Deplaned Pre-Cleared Revenue	1,802	1,834	-1.74	21,316	22,034	-3.26
Intl Enplaned Pre-Cleared Non-Revenue	17	29	-41.38	276	307	-10.10
Intl Deplaned Pre-Cleared Non-Revenue	29	37	-21.62	291	319	-8.78
Barbara Jordan Terminal Passenger Totals	1,165,673	1,034,067	12.73	13,673,465	12,436,849	9.94
<i>BJT Enplaned Passenger Totals</i>	<i>599,022</i>	<i>526,211</i>	<i>13.84</i>	<i>6,864,613</i>	<i>6,226,002</i>	<i>10.26</i>
<i>BJT Deplaned Passenger Totals</i>	<i>566,651</i>	<i>507,856</i>	<i>11.58</i>	<i>6,808,852</i>	<i>6,210,847</i>	<i>9.63</i>
<i>BJT Domestic Passenger Totals</i>	<i>1,139,014</i>	<i>1,007,493</i>	<i>13.05</i>	<i>13,343,517</i>	<i>12,161,555</i>	<i>9.72</i>
<i>BJT International Passenger Totals</i>	<i>26,659</i>	<i>26,574</i>	<i>0.32</i>	<i>329,948</i>	<i>275,294</i>	<i>19.85</i>
<u>South Terminal (ST)</u>						
Passenger Activity						
South Terminal Domestic Enplaned Revenue	12,848	0	0.00	108,451	0	0.00
South Terminal Domestic Deplaned Revenue	11,985	0	0.00	107,309	0	0.00
South Terminal Domestic Enplaned Non-Revenue	3	0	0.00	51	0	0.00
South Terminal Domestic Deplaned Non-Revenue	4	0	0.00	29	0	0.00
South Terminal Passenger Totals	24,840	0	0.00	215,840	0	0.00
<i>ST Enplaned Passenger Totals</i>	<i>12,851</i>	<i>0</i>	<i>0</i>	<i>108,502</i>	<i>0</i>	<i>0</i>
<i>ST Deplaned Passenger Totals</i>	<i>11,989</i>	<i>0</i>	<i>0</i>	<i>107,338</i>	<i>0</i>	<i>0</i>

Austin-Bergstrom International Airport

Aviation Activity Report

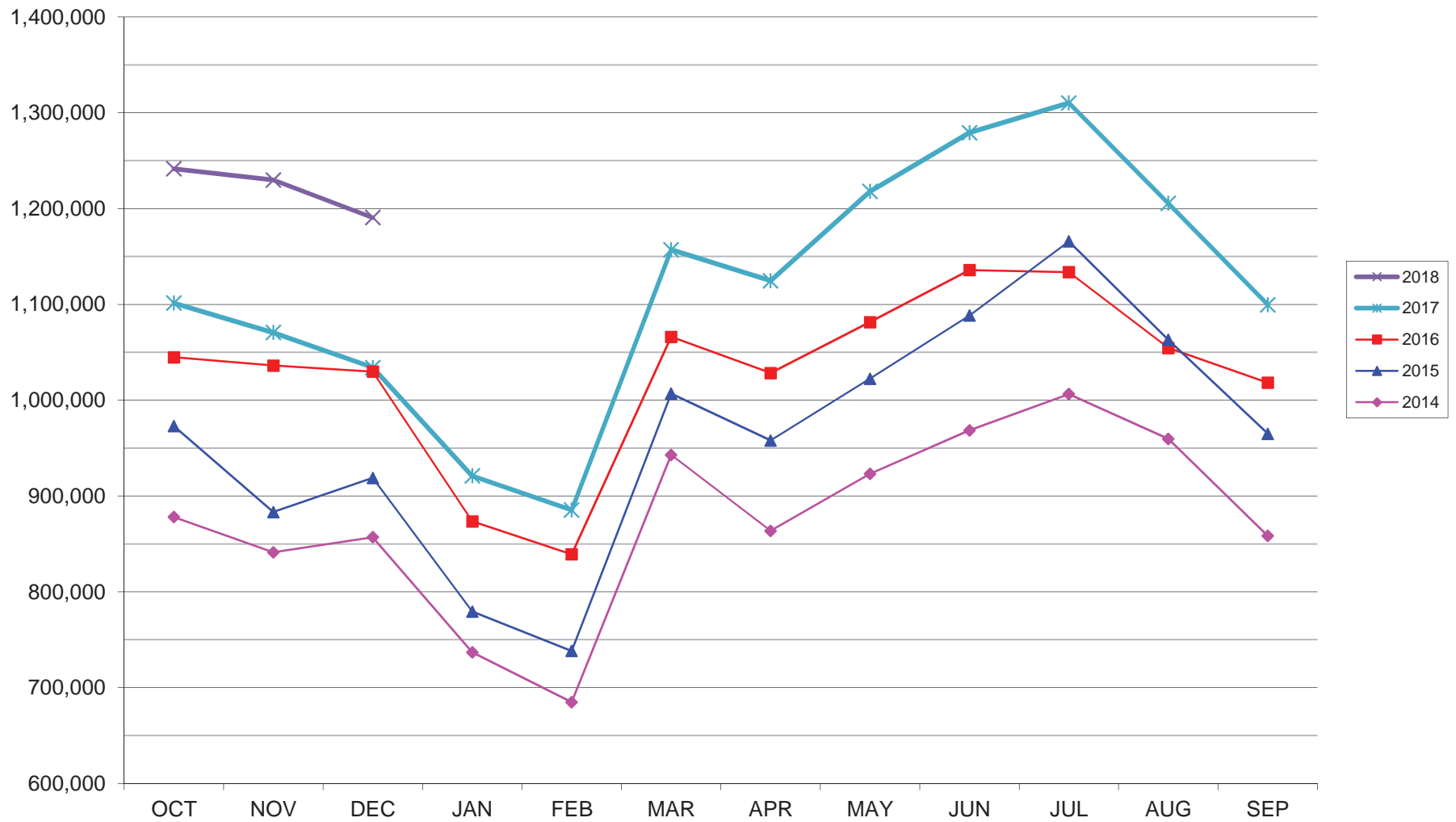
Calendar Year 2017 vs 2016

	12/2017	12/2016	Percent Change	01/2017 - 12/2017	01/2016 - 12/2016	Percent Change
<u>Total Cargo Activity</u>						
Mail						
Domestic Enplaned Mail	235,378	210,594	11.77	2,342,691	1,699,864	37.82
Domestic Deplaned Mail	469,510	325,370	44.30	4,669,097	3,053,925	52.89
International Enplaned Mail	0	0	0.00	0	0	0.00
International Deplaned Mail	0	0	0.00	2	2	0.00
South Terminal-Intl Enplaned Mail	0	0	0.00	0	0	0.00
South Terminal-Intl Deplaned Mail	0	0	0.00	0	0	0.00
Mail Totals	704,888	535,964	31.52	7,011,790	4,753,791	47.50
Cargo						
Domestic Enplaned Cargo	5,102,655	5,382,879	-5.21	61,468,707	62,582,157	-1.78
Domestic Deplaned Cargo	7,289,487	7,826,890	-6.87	84,821,679	80,022,905	6.00
International Enplaned Cargo	693,009	527,282	31.43	9,222,215	6,007,466	53.51
International Deplaned Cargo	284,869	321,953	-11.52	5,163,334	4,505,762	14.59
South Terminal-Intl Enplaned Cargo	0	0	0.00	0	0	0.00
South Terminal-Intl Deplaned Cargo	0	0	0.00	0	0	0.00
Cargo Totals	13,370,020	14,059,004	-4.90	160,675,935	153,118,290	4.94
Belly Freight						
Domestic Enplaned Belly Freight	303,970	252,270	20.49	3,431,250	2,907,650	18.01
Domestic Deplaned Belly Freight	473,280	459,994	2.89	6,060,077	5,502,554	10.13
International Enplaned Belly Freight	321,862	194,104	65.82	3,384,848	1,736,088	94.97
International Deplaned Belly Freight	740,648	857,021	-13.58	8,798,737	6,721,309	30.91
South Terminal-Intl Enplaned Belly Freight	0	0	0.00	0	0	0.00
South Terminal-Intl Deplaned Belly Freight	0	0	0.00	0	0	0.00
Belly Freight Totals	1,839,760	1,763,389	4.33	21,674,912	16,867,601	28.50
Cargo Totals (Mail, Cargo, Belly Freight)	15,914,668	16,358,357	-2.71	189,362,637	174,739,682	8.37
<i>Enplaned Cargo Totals</i>	<i>6,656,874</i>	<i>6,567,129</i>	<i>1.37</i>	<i>79,849,711</i>	<i>74,933,225</i>	<i>6.56</i>
<i>Deplaned Cargo Totals</i>	<i>9,257,794</i>	<i>9,791,228</i>	<i>-5.45</i>	<i>109,512,926</i>	<i>99,806,457</i>	<i>9.73</i>
<i>Domestic Cargo Totals</i>	<i>13,874,280</i>	<i>14,457,997</i>	<i>-4.04</i>	<i>162,793,501</i>	<i>155,769,055</i>	<i>4.51</i>
<i>International Cargo Totals</i>	<i>2,040,388</i>	<i>1,900,360</i>	<i>7.37</i>	<i>26,569,136</i>	<i>18,970,627</i>	<i>40.05</i>

CURRENT CARGO RECORD = 40,215,518

RECORD SET = MARCH 2001

AUSTIN PASSENGER TRAFFIC 5 Year Trend



Austin-Bergstrom International Airport
Aviation Activity Report
Fiscal Year 2018 vs 2017
Combined Terminals

ABIA

Total Passenger Activity

	12/2017	12/2016	Percent Change	10/2017 - 12/2017	10/2016 - 12/2016	Percent Change
Domestic Enplaned Revenue	571,768	501,413	14.03	1,743,392	1,550,303	12.45
Domestic Deplaned Revenue	541,042	483,986	11.79	1,716,728	1,525,855	12.51
International Enplaned Revenue	12,014	12,072	-0.48	31,560	28,138	12.16
International Deplaned Revenue	10,873	10,915	-0.38	30,432	27,485	10.72
Domestic Enplaned Non-Revenue	13,395	11,074	20.96	39,740	31,616	25.70
Domestic Deplaned Non-Revenue	12,809	11,020	16.23	38,195	30,743	24.24
International Enplaned Non-Revenue	99	66	50.00	294	203	44.83
International Deplaned Non-Revenue	96	64	50.00	250	189	32.28
Intl Enplaned Pre-Cleared Revenue	1,729	1,557	11.05	5,271	5,318	-0.88
Intl Deplaned Pre-Cleared Revenue	1,802	1,834	-1.74	5,673	5,942	-4.53
Intl Enplaned Pre-Cleared Non-Revenue	17	29	-41.38	75	69	8.70
Intl Deplaned Pre-Cleared Non-Revenue	29	37	-21.62	77	57	35.09
South Terminal Domestic Enplaned Revenue	12,848	0	0.00	39,308	0	0.00
South Terminal Domestic Deplaned Revenue	11,985	0	0.00	38,432	0	0.00
South Terminal Domestic Enplaned Non-Revenue	3	0	0.00	14	0	0.00
South Terminal Domestic Deplaned Non-Revenue	4	0	0.00	16	0	0.00
ABIA Passenger Totals	1,190,513	1,034,067	15.13	3,689,457	3,205,918	15.08

<i>ABIA Enplaned Passenger Totals</i>	<i>611,873</i>	<i>526,211</i>	<i>16.28</i>	<i>1,859,654</i>	<i>1,615,647</i>	<i>15.10</i>
<i>ABIA Deplaned Passenger Totals</i>	<i>578,640</i>	<i>507,856</i>	<i>13.94</i>	<i>1,829,803</i>	<i>1,590,271</i>	<i>15.06</i>
<i>ABIA Domestic Passenger Totals</i>	<i>1,163,854</i>	<i>1,007,493</i>	<i>15.52</i>	<i>3,615,825</i>	<i>3,138,517</i>	<i>15.21</i>
<i>ABIA International Passenger Totals</i>	<i>26,659</i>	<i>26,574</i>	<i>0.32</i>	<i>73,632</i>	<i>67,401</i>	<i>9.24</i>

CURRENT PASSENGER RECORD = 1,310,174 RECORD SET = JULY 2017

Total Aircraft Operations

Air Carrier	10,608	9,540	11.19	31,676	28,477	11.23
Commuter & Air Taxi	1,311	1,258	4.21	4,320	4,167	3.67
Military	557	603	-7.63	2,044	2,255	-9.36
General Aviation						
Itinerant	3,356	3,429	-2.13	11,961	13,060	-8.42
Local	124	150	-17.33	378	750	-49.60
Total G.A.	3,480	3,579	-2.77	12,339	13,810	-10.65
Total Operations	15,956	14,980	6.52	50,379	48,709	3.43

Austin-Bergstrom International Airport
Aviation Activity Report
Fiscal Year 2018 vs 2017

By Terminal

	12/2017	12/2016	Percent Change	10/2017 - 12/2017	10/2016 - 12/2016	Percent Change
<u>Barbara Jordan Terminal (BJT)</u>						
Passenger Activity						
Domestic Enplaned Revenue	571,768	501,413	14.03	1,743,392	1,550,303	12.45
Domestic Deplaned Revenue	541,042	483,986	11.79	1,716,728	1,525,855	12.51
International Enplaned Revenue	12,014	12,072	-0.48	31,560	28,138	12.16
International Deplaned Revenue	10,873	10,915	-0.38	30,432	27,485	10.72
Domestic Enplaned Non-Revenue	13,395	11,074	20.96	39,740	31,616	25.70
Domestic Deplaned Non-Revenue	12,809	11,020	16.23	38,195	30,743	24.24
International Enplaned Non-Revenue	99	66	50.00	294	203	44.83
International Deplaned Non-Revenue	96	64	50.00	250	189	32.28
Intl Enplaned Pre-Cleared Revenue	1,729	1,557	11.05	5,271	5,318	-0.88
Intl Deplaned Pre-Cleared Revenue	1,802	1,834	-1.74	5,673	5,942	-4.53
Intl Enplaned Pre-Cleared Non-Revenue	17	29	-41.38	75	69	8.70
Intl Deplaned Pre-Cleared Non-Revenue	29	37	-21.62	77	57	35.09
Barbara Jordan Terminal Passenger Totals	1,165,673	1,034,067	12.73	3,611,687	3,205,918	12.66
<i>BJT Enplaned Passenger Totals</i>	<i>599,022</i>	<i>526,211</i>	<i>13.84</i>	<i>1,820,332</i>	<i>1,615,647</i>	<i>12.67</i>
<i>BJT Deplaned Passenger Totals</i>	<i>566,651</i>	<i>507,856</i>	<i>11.58</i>	<i>1,791,355</i>	<i>1,590,271</i>	<i>12.64</i>
<i>BJT Domestic Passenger Totals</i>	<i>1,139,014</i>	<i>1,007,493</i>	<i>13.05</i>	<i>3,538,055</i>	<i>3,138,517</i>	<i>12.73</i>
<i>BJT International Passenger Totals</i>	<i>26,659</i>	<i>26,574</i>	<i>0.32</i>	<i>73,632</i>	<i>67,401</i>	<i>9.24</i>
<u>South Terminal (ST)</u>						
Passenger Activity						
South Terminal Domestic Enplaned Revenue	12,848	0	0	39,308	0	0
South Terminal Domestic Deplaned Revenue	11,985	0	0	38,432	0	0
South Terminal Domestic Enplaned Non-Revenue	3	0	0	14	0	0
South Terminal Domestic Deplaned Non-Revenue	4	0	0	16	0	0
South Terminal Passenger Totals	24,840	0	0.00	77,770	0	0.00
<i>ST Enplaned Passenger Totals</i>	<i>12,851</i>	<i>0</i>	<i>0</i>	<i>39,322</i>	<i>0</i>	<i>0</i>
<i>ST Deplaned Passenger Totals</i>	<i>11,989</i>	<i>0</i>	<i>0</i>	<i>38,448</i>	<i>0</i>	<i>0</i>

Austin-Bergstrom International Airport
Aviation Activity Report
Fiscal Year 2018 vs 2017

	12/2017	12/2016	Percent Change	10/2017 - 12/2017	10/2016 - 12/2016	Percent Change
<u>Total Cargo Activity</u>						
Mail						
Domestic Enplaned Mail	235,378	210,594	11.77	603,689	528,426	14.24
Domestic Deplaned Mail	469,510	325,370	44.30	1,348,881	992,204	35.95
International Enplaned Mail	0	0	0.00	0	0	0.00
International Deplaned Mail	0	0	0.00	0	0	0.00
South Terminal-Intl Enplaned Mail	0	0	0.00	0	0	0.00
South Terminal-Intl Deplaned Mail	0	0	0.00	0	0	0.00
Mail Totals	704,888	535,964	31.52	1,952,570	1,520,630	28.41
Cargo						
Domestic Enplaned Cargo	5,102,655	5,382,879	-5.21	14,669,131	16,247,734	-9.72
Domestic Deplaned Cargo	7,289,487	7,826,890	-6.87	21,561,150	22,201,339	-2.88
International Enplaned Cargo	693,009	527,282	31.43	3,317,309	2,642,826	25.52
International Deplaned Cargo	284,869	321,953	-11.52	1,534,375	1,149,915	33.43
South Terminal-Intl Enplaned Cargo	0	0	0.00	0	0	0.00
South Terminal-Intl Deplaned Cargo	0	0	0.00	0	0	0.00
Cargo Totals	13,370,020	14,059,004	-4.90	41,081,965	42,241,814	-2.75
Belly Freight						
Domestic Enplaned Belly Freight	303,970	252,270	20.49	934,597	768,966	21.54
Domestic Deplaned Belly Freight	473,280	459,994	2.89	1,477,313	1,318,666	12.03
International Enplaned Belly Freight	321,862	194,104	65.82	1,323,146	400,022	230.77
International Deplaned Belly Freight	740,648	857,021	-13.58	2,382,858	2,271,148	4.92
South Terminal-Intl Enplaned Belly Frt	0	0	0.00	0	0	0.00
South Terminal-Intl Deplaned Belly Frt	0	0	0.00	0	0	0.00
Belly Freight Totals	1,839,760	1,763,389	4.33	6,117,914	4,758,802	28.56
Cargo Totals (Mail, Cargo, Belly Freight)	15,914,668	16,358,357	-2.71	49,152,449	48,521,246	1.30
<i>Enplaned Cargo Totals</i>	<i>6,656,874</i>	<i>6,567,129</i>	<i>1.37</i>	<i>20,847,872</i>	<i>20,587,974</i>	<i>1.26</i>
<i>Deplaned Cargo Totals</i>	<i>9,257,794</i>	<i>9,791,228</i>	<i>-5.45</i>	<i>28,304,577</i>	<i>27,933,272</i>	<i>1.33</i>
<i>Domestic Cargo Totals</i>	<i>13,874,280</i>	<i>14,457,997</i>	<i>-4.04</i>	<i>40,594,761</i>	<i>42,057,335</i>	<i>-3.48</i>
<i>International Cargo Totals</i>	<i>2,040,388</i>	<i>1,900,360</i>	<i>7.37</i>	<i>8,557,688</i>	<i>6,463,911</i>	<i>32.39</i>

CURRENT CARGO RECORD = 40,215,518

RECORD SET = MARCH 2001



BUSINESS DEVELOPMENT AND TENANT MANAGEMENT
Austin Airport Advisory Commission Report
February 13, 2018

Tenant Updates and Business Development Events

1. On January 18th, ViaAir started a new nonstop service between The South Terminal at Austin-Bergstrom International Airport (AUS) and Tucson, Arizona (TUS). The AUS to TUS service started on Thursday, Jan. 18, 2018. The ViaAir nonstop service from AUS to TUS will operate three days per week, on Thursdays, Fridays, and Mondays. The flight will depart Austin's South Terminal at 10:50 a.m. and arrive in Tucson at 12:20 p.m. Flights will depart Tucson at 1:05 p.m. and arrive at Austin's South Terminal at 4:10 p.m.
2. On January 25th, Southwest Airlines has announced that it will increase its seasonal nonstop service between Austin-Bergstrom International Airport (AUS) to Cancun, Mexico (CUN) with an additional Saturday flight for June and July 2018. Southwest currently operates a daily nonstop flight between AUS – CUN from November to July and will add a second nonstop flight on Saturdays effective June 9, 2018. The new schedule begins with the first Saturday nonstop departing Austin at 7:55 a.m. and arriving in Cancun at 10:25 a.m. The second Saturday flight will depart Austin at 11:55 a.m. and arrive in Cancun at 2:25 p.m.
3. On February 5, Delta Air Lines has announced new nonstop service between Austin-Bergstrom International Airport (AUS) and Cincinnati / Northern Kentucky (CVG) International Airport, beginning May 1, 2018. Delta's new, year-round, nonstop flight will depart Austin at 11:55 a.m. and arrive in Cincinnati, Ohio at 3:25 p.m. Flights depart Cincinnati at 9:50 a.m. and arrive in Austin at 11:25 a.m. The flight will operate six days per week, Sundays – Fridays, using a CRJ700 aircraft.

AGENDA



Recommendation for Council Action

AUSTIN CITY COUNCIL

Regular Meeting : February 15, 2018

Item Number: 009

Capital Contracting Office

Authorize negotiation and execution of a professional services agreement with the following six staff recommended firms (or other qualified responders) for Request for Qualifications Solicitation No. CLMP236: Terracon Consultants, Inc., Raba Kistner Consultants, Inc., HVJ South Central Texas - M&J (DBE/MA), Inc., Kleinfelder, Inc., Rodriguez Engineering Laboratories LLC (DBE/MH), and Fugro USA Land, Inc., for engineering services for the ABIA Construction Materials, Geotechnical and Forensic Engineering Services Rotation List, for an estimated period of four years, or until financial authorization is expended, with the total amount not to exceed \$15,000,000 divided among the six firms. [Note: This contract will be awarded in compliance with the Disadvantaged Business Enterprise (DBE) Program requirements (49 CFR Part 26) by meeting the goals with 13.42% DBE participation.]

District(s) Affected: District 2

Lead Department	Capital Contracting Office <u>Managing Department(s)</u> Department of Aviation
Fiscal Note	Funding is available in the Fiscal Year 2017-2018 Capital Budget of the Department of Aviation.
Purchasing Language	Staff recommendation is selection of the six most qualified firms out of nine firms evaluated through the City's qualification-based selection process.
For More Information	Inquiries should be directed to the City Manager's Agenda Office, at 512-974-2991 or AgendaOffice@austintexas.gov. NOTE: Respondents to this solicitation, and their representatives, shall direct inquiries to Rolando Fernandez, 512-974-7749, Aiden

	Cohen, 512-974-1929, or the Project Manager, Robert Mercado, 512-530-2515.
Council Committee, Boards and Commission Action	To be reviewed by the Airport Advisory Commission on February 13, 2018.

Additional Backup Information:

Since the opening of Austin-Bergstrom International Airport in 1999, there has been significant growth in the region and large increases in both domestic and international air service. The number of flights, passengers, and cargo has grown rapidly over the past few years at an annual 10%, 11% and nearly 12% growth rate. This growth in demand has necessitated significant investments in infrastructure projects to meet the region's current and expected airline service needs. The Airport's capital improvement plan anticipates approximately \$850M of spending for new projects through fiscal year 2022. These future projects will require substantial geotechnical, steel, concrete, and other materials testing services prior to, during, and potentially after construction.

The total funding authority for the Austin-Bergstrom International Airport Construction Materials, Geotechnical and Forensic Engineering Services Rotation List is \$15,000,000 with the authority for each of the six recommended firms to be approximately \$2,500,000.

The recommended firms can provide professional services for the following:

Construction Materials Testing

The City anticipates a combination of services required for site-specific development and building construction projects for both City Capital Improvement Program and certain privately-funded developer projects. The services associated with this category will typically include collecting samples or inspections, laboratory and field testing of construction materials, and preparations of testing and inspection reports.

The City requires the selected firms to provide "call-out" sampling, laboratory and field investigations, and preparation of reports indicating whether materials meet the requirements of the Construction Documents. Work in this area may include one or more of the following: soil, rock, concrete, Hot Mix Asphalt Concrete, welding, and flexible base stockpiles.

Geotechnical Engineering

A combination of services for Geotechnical Engineering for Capital Improvements Program

projects including subsurface exploration, laboratory and field-testing of soil and rock, and geotechnical engineering analyses and recommendations. Firms selected for this category may:

- Conduct field investigations of subsurface soil and rock
- Perform tests to determine soil properties and accurately depict existing subsurface conditions
- Perform hardness and other specialized tests as required
- Prepare written reports which contain facts (laboratory test results), interpretations (shrink/swell potential, stratigraphy, geologic structural features), and recommendations (preferred pipe bedding materials, influence of groundwater and adjacent structures, allowable loads, and permissible slopes)

Other services may be required based on the specific needs of the project, including, but not limited to, field inspections of drilled piers and other foundation excavations

Forensic Engineering

The firms selected for Forensic Engineering will provide services related to determining causes of failure of constructed structures, including providing expert witness testimony. Services may include:

- Determine scope of tests and data required to assess the cause of failure
- Field sampling, laboratory testing, and engineering observation
- Evaluations using petrography, scanning electron microscopy, x-ray spectroscopy, and other test methods
- Assessment of all collected data and determination of the cause of failure
- Preparation and submittal of a report with findings and recommendations to the City of Austin Law Department as a document with attorney-client privilege

A delay in approval of this item will lead to delays in Department of Aviation capital improvement projects.

As a standard business practice, the City routinely engages the services of professional engineering firms to perform analysis, design and support services associated with construction or improvement of City capital assets. Rotation List contracting allows the City to always have a group of qualified consultants available to perform a specific type of recurring work in a timely manner to meet the project and operational needs of the City.

Prior to issuing, this solicitation was reviewed by the City's Rotation List Advisory Committee, which is made up of staff from the Capital Contracting Office, Small and Minority Business Resource Department, Public Works Department, and other user departments. The total authorization amount, the number of firms to be recommended for selection, and the authorization amount per firm were discussed and reviewed by the Committee. The Capital Contracting Office expects the user department will require these services to meet current and future engineering testing needs. These projects will require external engineering services to properly plan, evaluate, design, and implement.

This request allows for the negotiation and execution of a professional services agreement with

each of the six recommended firms for an estimated period of four years, or until financial authorization is expended. Initial project assignments will be based on the firm's final ranking as determined during the Request for Qualifications evaluation (highest to lowest), the maximum cumulative contracted amount in comparison to the estimated task budget for that firm, and the firm's availability at time of project need. Allocation of funds per firm may be increased or decreased based on business needs and will follow established rotation list policies and procedures. If the City is unsuccessful in negotiating a satisfactory agreement with the recommended firm(s), or if a selected firm ceases practice during the contract period, or if the City elects to terminate its agreement with one of the selected firms, the remaining financial authorization and future assignments will be permanently assigned to the remaining firm(s).

RECOMMENDED FIRMS:

Terracon Consultants Inc., is located in Austin, TX.

Raba Kistner Consultants Inc., is located in Austin, TX.

HVJ South Central Texas - M&J, Inc. is located in Austin, TX.

Kleinfelder, Inc., is located in Austin, TX.

Rodriguez Engineering Laboratories, LLC is located in Austin, TX.

Furgo USA Land, Inc., is located in Austin, TX.

Information on this solicitation is available through the City's Austin Finance Online website.

Link: Solicitation Documents

<https://www.ci.austin.tx.us/financeonline/vendor_connection/solicitation/solicitation_details.cfm?sid=121368>.