

Roy G. Guerrero Park

Channel Stabilization Work & Tree Impacts

Urban Forestry Commission

February 7th, 2018



City of Austin

**WATERSHED
PROTECTION**

Recap: The Problems

- Country Club Creek West is a man-made channel in Roy G. Guerrero Colorado River Park.
- The channel has caused erosion problems for decades
- Severe erosion began during 2015 floods
- Bike/Pedestrian bridge washed out
- Erosion continues to progress with each rain

Recap: The Solutions

- Watershed Protection and Parks and Recreation are partnering in a \$13M capital project to stabilize the channel and replace the bridge.
- Construction will begin in 2020
- Interim measures are needed to “hold the line”
 - WPD Interim Project No. 1 – completed in May 2017
 - WPD Interim Project No. 2 – underway and to be completed in March 2018

Overview



Erosion Impacts

- Loss of pedestrian bridge



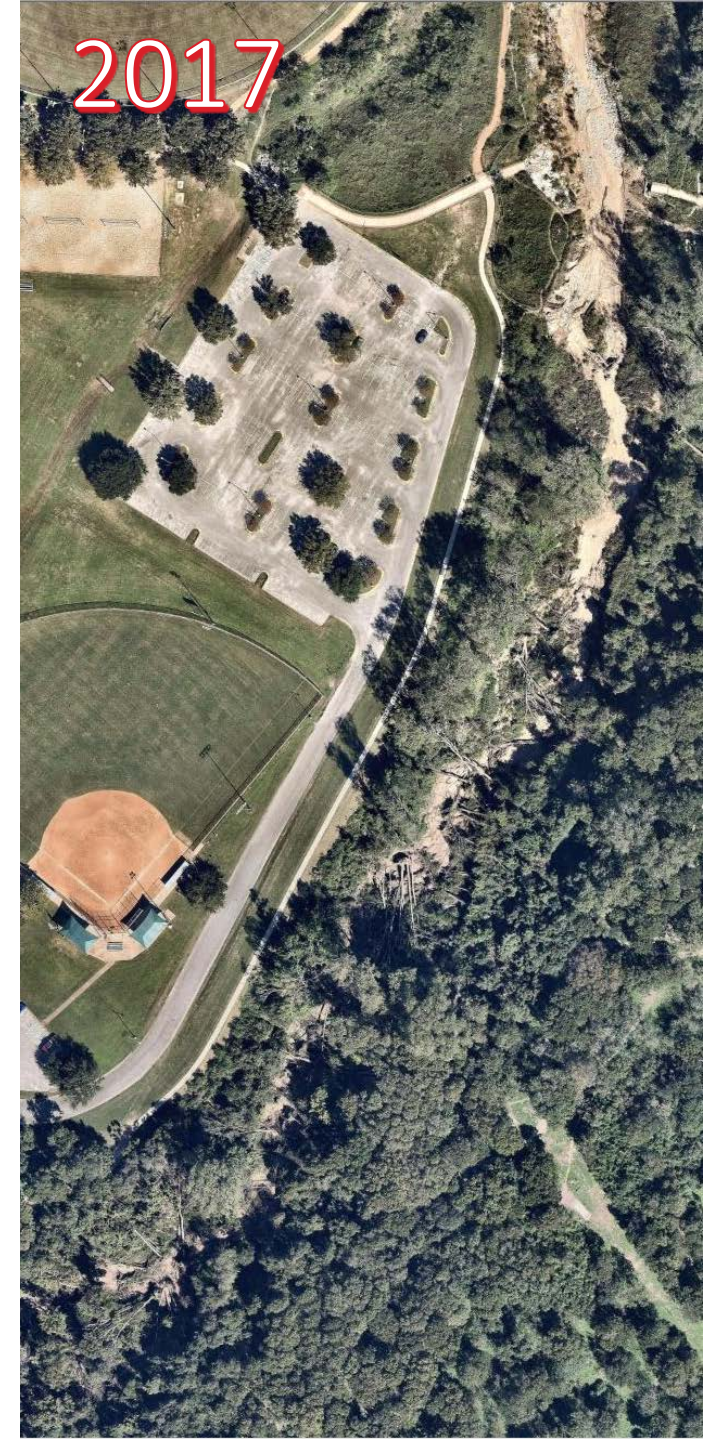
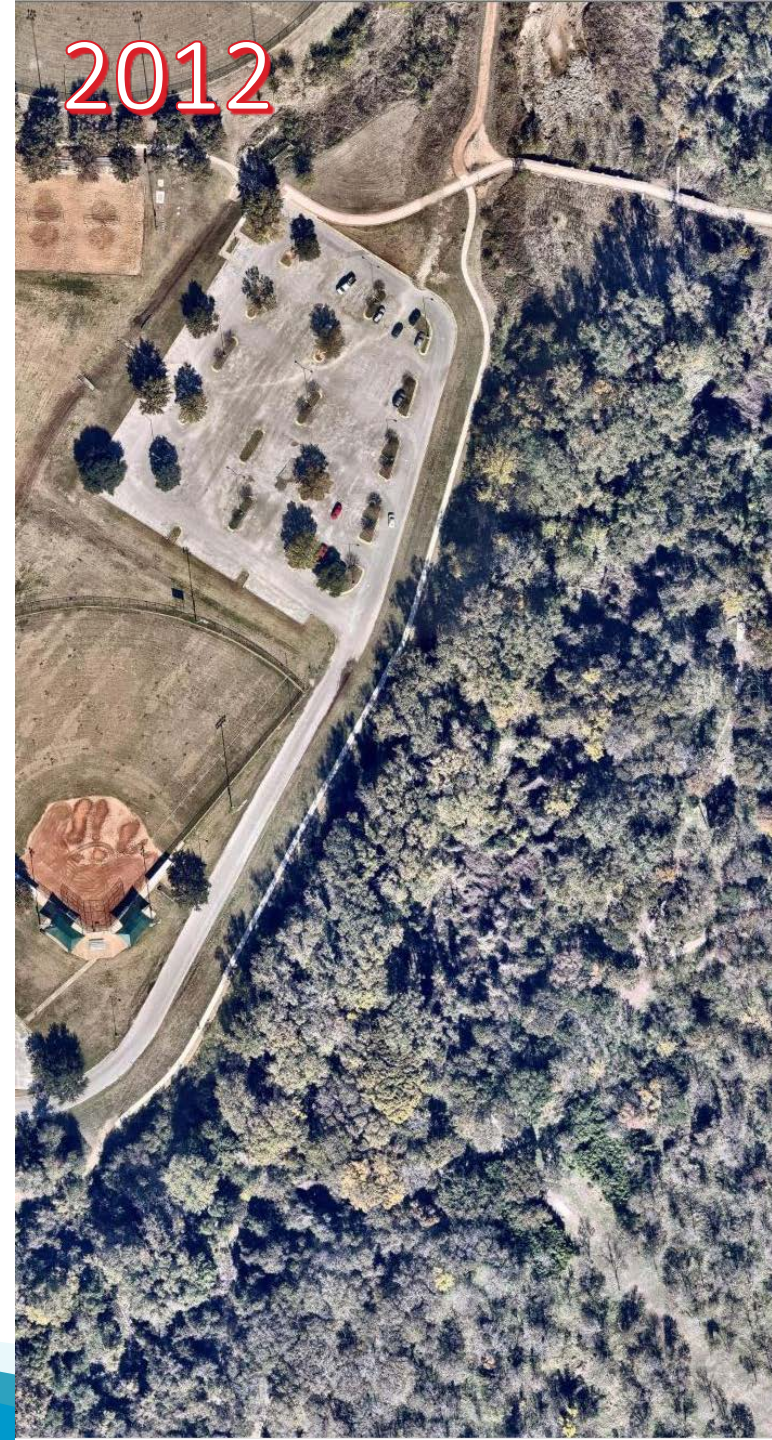
Erosion Impacts

- Unraveling of ~1500' of channel



Erosion Impacts

- 100s of trees fallen



Construction Impacts

- No tree impacts for first interim project (2017)
- Complete tree survey in October 2017
- Second interim project:
 - Trees removed through General Permit notification in Nov. 2017
 - Reviewed by PARD Forestry Staff
 - No Heritage Trees Removed
 - 19 Protected Trees removed
 - Many multi-stem
 - 4 Box Elder, 1 American Elm, 10 Ash (Arizona, Green, or Hybrid), 1 Texas Mulberry, 1 Black Willow, 1 Cottonwood

A rock and a hard place.

- Tree removal was necessary to construct second interim project.
- Purpose of this project is to prevent certain continued loss of trees and parkland upstream.

