

# Austin Fire Department CodeNEXT and Wildfire Safety

Austin Planning Commission  
February 7, 2018

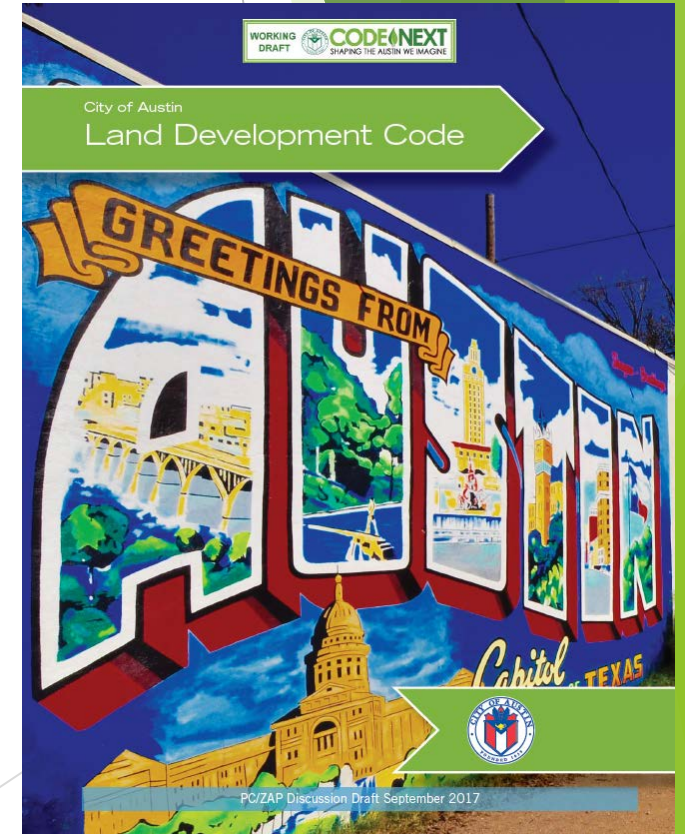
Mark Baker  
Wildland-Urban Interface Coordinator



# Austin Fire Department CodeNEXT and Wildfire Safety

## Wildfire Planning

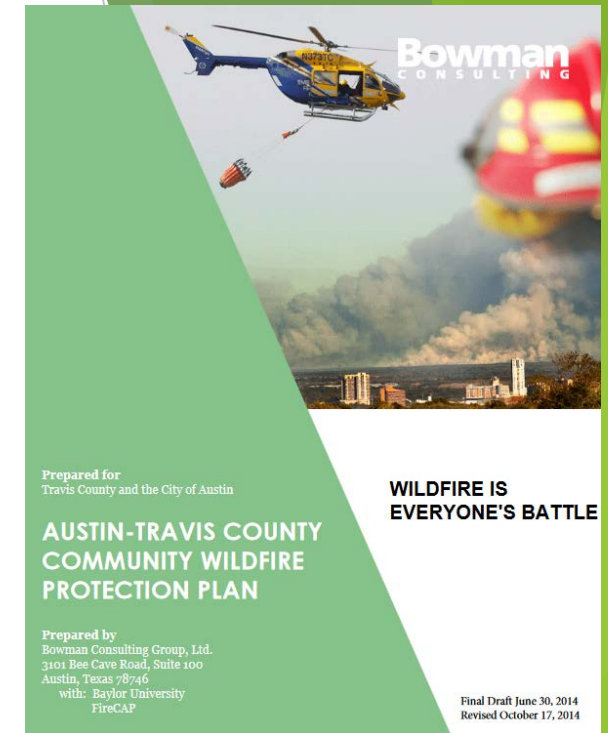
- Imagine Austin
  - GIPPIT
  - Strategic Outcomes
- City Plans
  - Hazard - Evacuation Plan
  - Land Use
  - Climate Resilience
- CodeNEXT (Technical Code)



# Austin Fire Department CodeNEXT and Wildfire Safety

## Wildfire Planning Support

- Community Wildfire Protection Plan
- City Council Resolution
- Risk Analysis and Mapping
- Community Planning Assistance for Wildfire Recommendations
- Austin Firewise Alliance



## Community Planning Assistance for Wildfire Recommendations for Austin, Texas



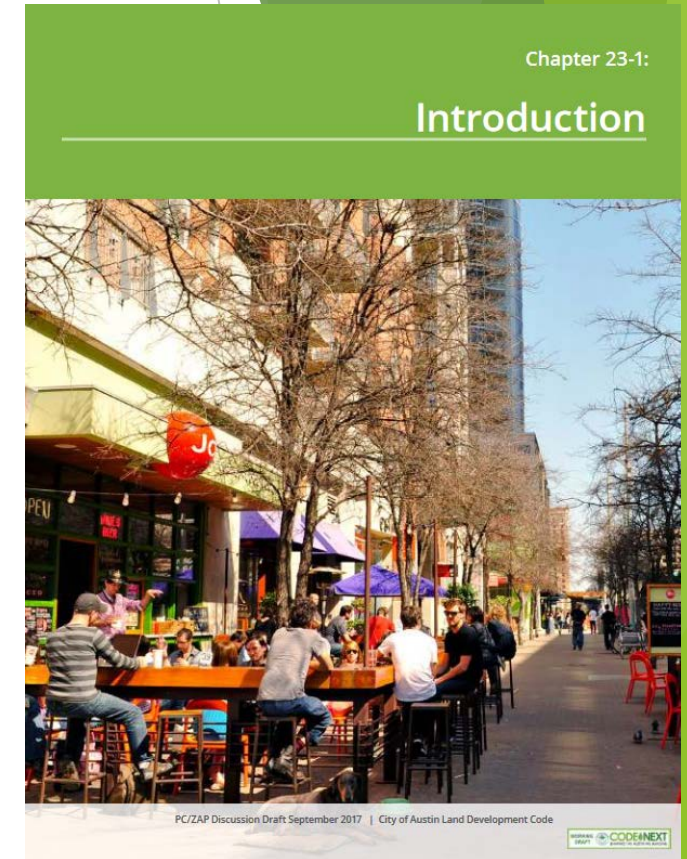
October 2016

Prepared by:  
Clarion Associates  
Wildfire Planning International  
Wildland Professional Solutions

## 23-1 Introduction

### 23-1A-1020 Purpose

Provide for the safe, orderly, and healthful subdivision of land, in a manner consistent with the goals and policies of the Comprehensive Plan; ... and protect lives, property, and the natural environment by reducing the impact of floods, **wildfire**, erosion, and water pollution



## 23-3 General Planning Standards for All

### 23-3A-1010 Purpose

... parkland; protection and replenishment of urban forest resources; protection of water quality and protection from flooding and **wildfire**; ...

Chapter 23-3:

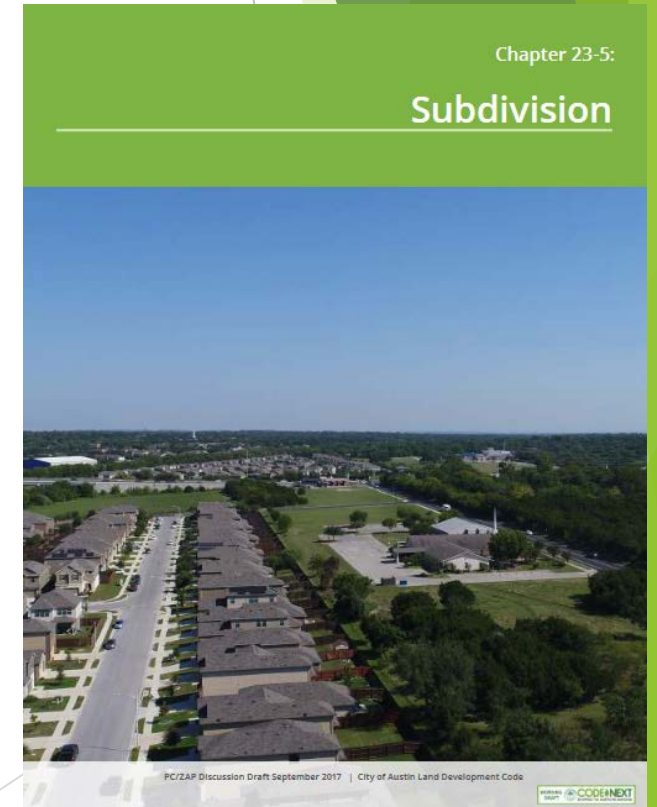
### General Planning Requirements



# Austin Fire Department CodeNEXT and Wildfire Safety

## Subdivision

- Staff Team
- Minimum access points
- Recommendations moved to Transportation
- Firewise Alliance Recommendations



# 23-9 Transportation

## Division 23-9B-1 General Provisions

### 23-9B-1080 Alignment

(B) The alignment of right-of-way is based on:

(2) Engineering criteria, including grade, sight distance, turning radii, curvature, existing green infrastructure, and the existence of a flood plain or wildfire hazard.



23-9 Transportation  
23-9H Street Layout  
Division 23-9H-1 Connectivity  
23-9H-1030 Access Streets

(A)(1) subdivisions or site plan at least 2 points of access

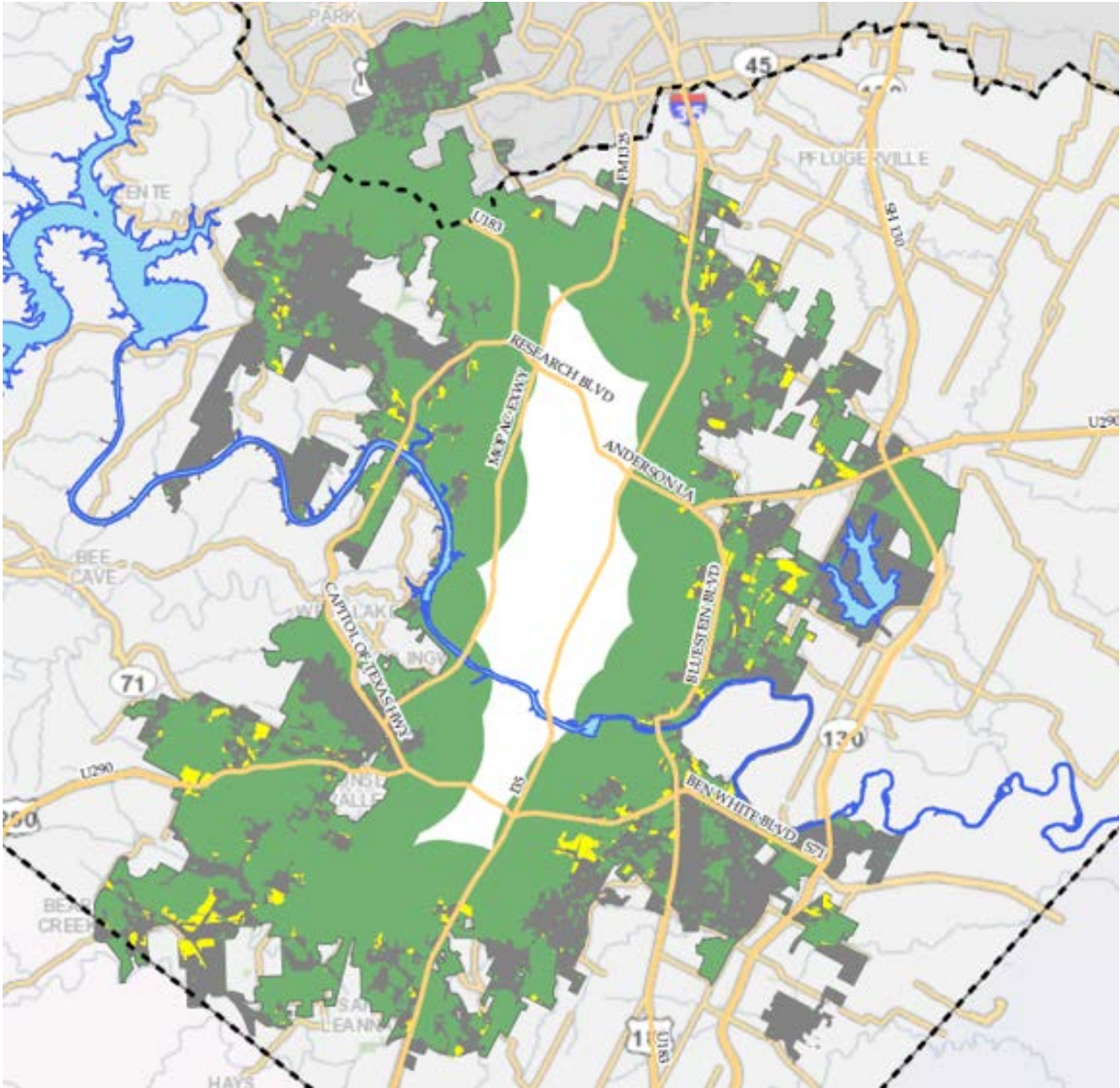
(C) (1) single access allowed if with Director determines is safe, and **does not cross a wildfire risk area**

- 2008 (current) referred to NFPA, National Fire Protection Association Standards
- CodeNEXT Draft 1 and 2 CWPP, Community Wildfire Protection Plan
- CodeNEXT draft 3 to reference AFD risk map





# Wildland-Urban Interface - Draft



- Undeveloped Lands (Potential WUI)
- Wildlands
- Wildland Urban Interface

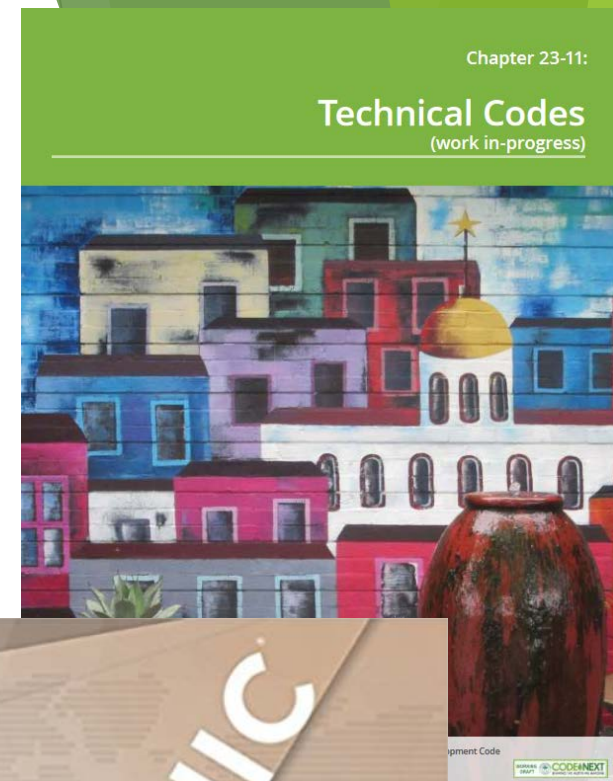
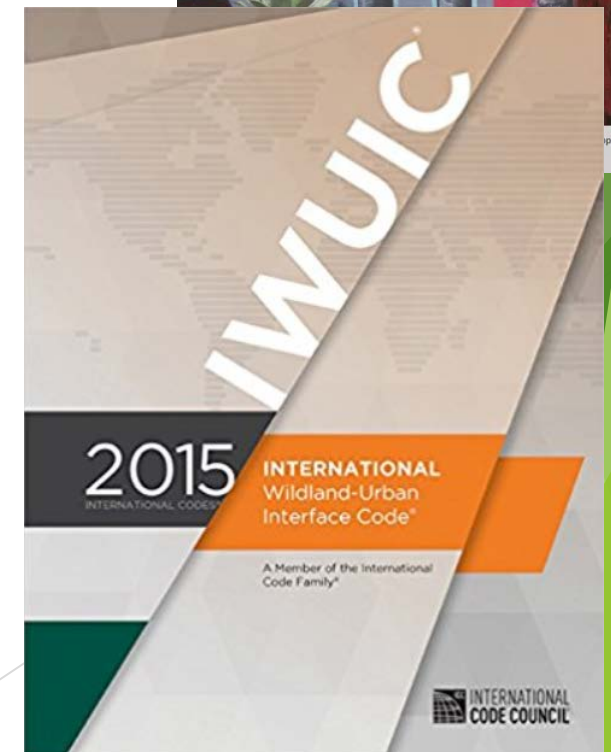
60% of the city of Austin is classified as wildland urban interface

0 2.5 5 10 Miles



# Wildland-Urban Interface (WUI) Code

- Technical Code - not part of CodeNEXT
  - Permit Review
  - Risk Map
  - Area requirements - access, water
  - Structure Hardening
  - Defensible Space



Thank you

Mark Baker  
Wildland-Urban Interface Coordinator

