

Little Stacy Park: Sunset Lane Road Removal and Creekside Restoration

*Parks and Recreation Board
February 27, 2018*



City of Austin

**WATERSHED
PROTECTION**

The short story...

- Sunset Lane follows the bank of Blunn Creek behind Little Stacy Park
- Two high-priority erosion sites threaten the roadway
- Options:
 - Repair bank
 - Close road
- Road Closure:
 - Coordinates with PARD improvements to Little Stacy Park
 - Included in Neighborhood Plan
 - Improved pedestrian safety and experience
 - Allows for expansion of park space
 - Connection of park users to the creek
 - Restored riparian zone and reduced pollutant loading



Typical Solutions – Eastside Drive



BEFORE



AFTER

Before Construction ... Destruction



Unique Stream Features

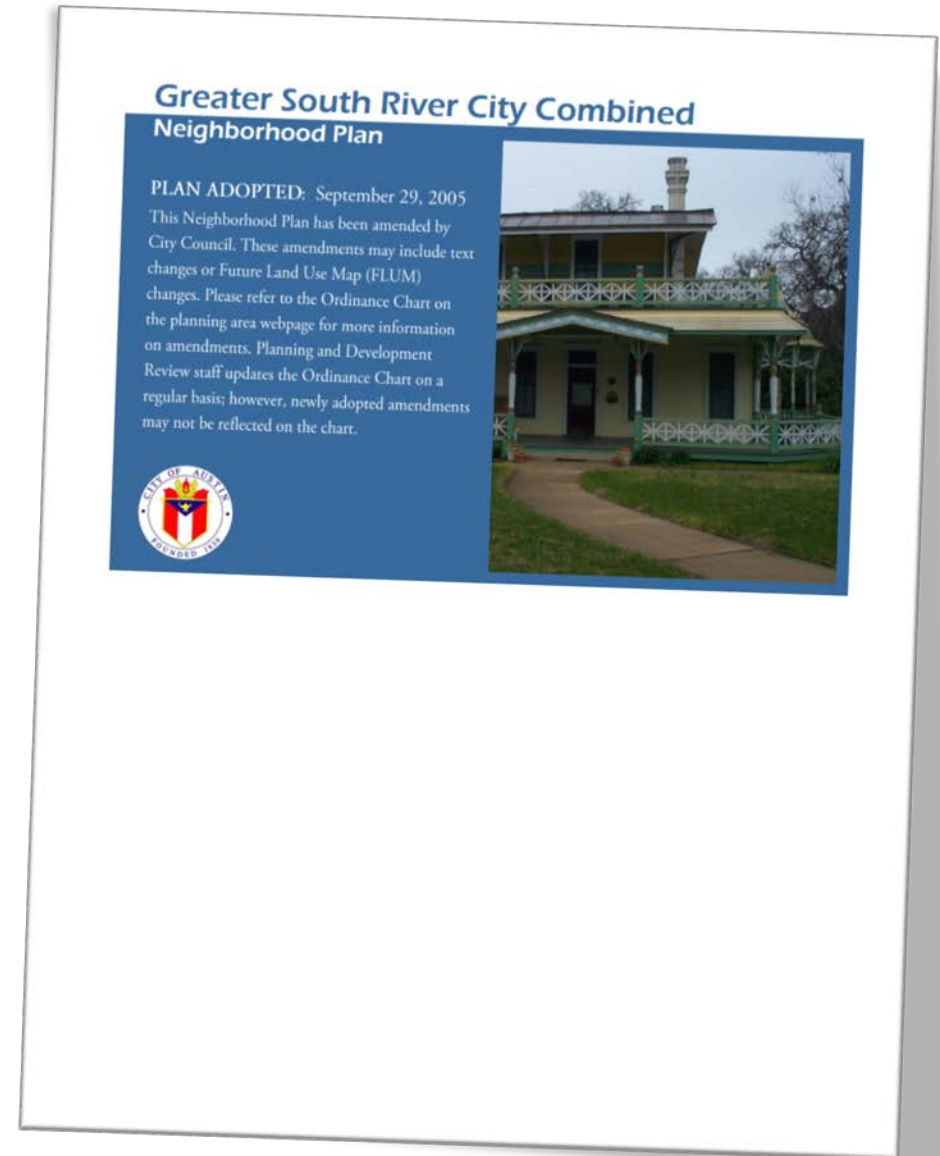


Design Challenges



Greater South River City Neighborhood Plan

- **#E20:** Close Sunset Lane between East Side Dr. and Alameda Ave., remove the pavement and extend Little Stacy Park to mitigate the increasing erosion problem in the area.

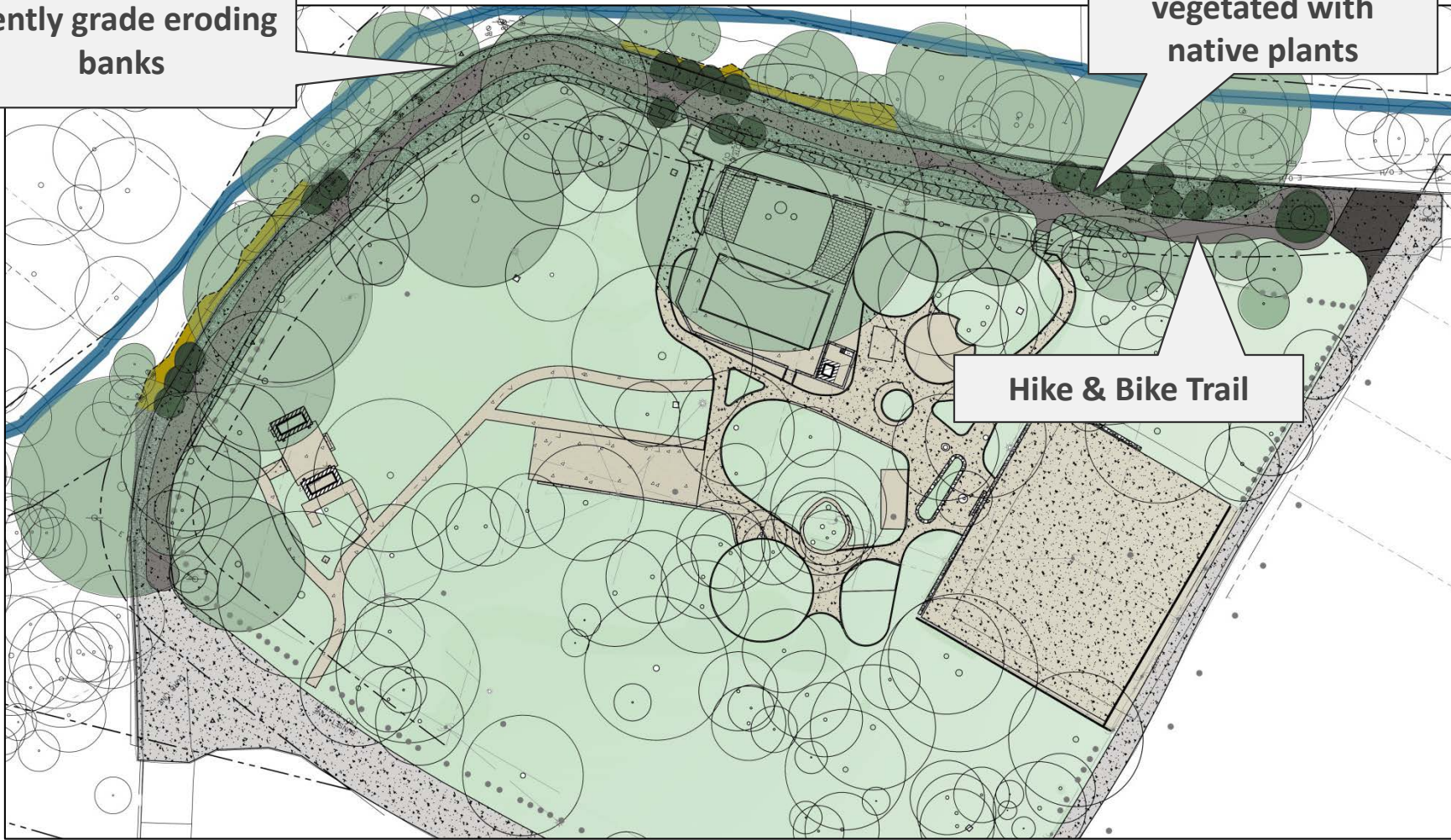


Conceptual Plan

Gently grade eroding banks

"Grow Zone"
vegetated with
native plants

Hike & Bike Trail



PROPOSED



EXISTING



Schedule

- Design Complete – Fall 2017
- Permitting – Spring 2018
- Construction – Fall 2018