

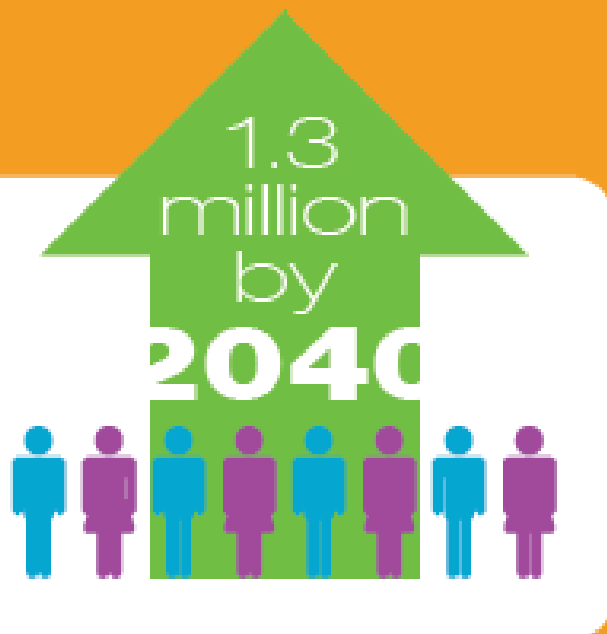


Austin Strategic Mobility Plan



Joint Sustainability Committee | February 28, 2018
Austin Transportation Department





Austin's population is expected to almost **DOUBLE** over the next 30 years.

Given this growth, maintaining current levels of traffic congestion will require a 50% mode share – with half of all residents using alternative transportation methods such as walking, biking, or taking transit.

Final Products

At the end of the ASMP process we will have:

- A Plan adopted by City Council, amending Imagine Austin
- A coordinated transportation strategy for all modes that supports the growth concept of Imagine Austin



+ An Updated, Multimodal Roadway Table

Where are we now

2016

2017

2018

Oct Nov Dec Jan Feb Mar Apr May Jun Jul Aug Sep Oct Nov Dec Jan Feb Mar Apr May Jun Jul Aug Sep Oct Nov Dec

Establish
Advisory
Committee &
Public
Engagement
Plan

Phase 1
Outreach
begins

Phase 1
Outreach
closes

Phase 2
Outreach
begins

Mobility
Strategy
review

Approval
Process
starts

Project Initiation &
Phase 1 Public Outreach

Scenario
Planning/Analysis &
Phase 2 Public Outreach

Preferred
Strategy

Plan
Review
&
Adoption



Goals



Affordability

Lower the cost of living, working, and traveling in Austin.



Travel Choice

Promote a balanced transportation network and the ability to make informed choices based upon personal needs and preferences.



Economic Prosperity

Promote future growth through strategic investments in transportation networks that meet the needs of the 21st century.



Commuter Delay

Reduce the amount of time workers spend traveling between home and work.



Health & Safety

Protect Austinites by lowering the risk of travel-related injury and promoting public health.



Innovation

Draw inspiration from forward-looking cities around the world, change the way we think about what's possible, and set an example for the rest of the Country.



Placemaking

Build a transportation network that encourages social interaction through quality urban design, and connects users to the many places that make Austin unique.



Sustainability

Promotes integrated designs and quality additions to the built environment while reducing impacts and promoting efficient use of public resources.

Top Priorities

From all Participants
(in-person and online)

- 1 Commuter Delay
- 2 Affordability
- 3 Health and Safety
- 4 Travel Choice
- 5 Sustainability
- 6 Placemaking
- 7 Economic Prosperity
- 8 Innovation

From Underserved
Communities
(in-person and online)

- 1 Affordability
- 2 Commuter Delay
- 3 Travel Choice
- 4 Health and Safety
- 5 Sustainability
- 6 Placemaking
- 7 Economic Prosperity
- 8 Innovation

Scenario Planning Process



What is Scenario Planning?



Scenario Planning |

Def: A method to explore how well different **mobility strategies** make progress towards achievement of **goals and objectives**.

Projects + Programs + Policies

A few things to remember...

- Further Imagine Austin
- Ingredients = projects, programs, and policies.
- Opportunity to understand more than just transportation performance
- We aren't selecting a scenario to become the "plan"
- This is a two part process*

Scenario Testing

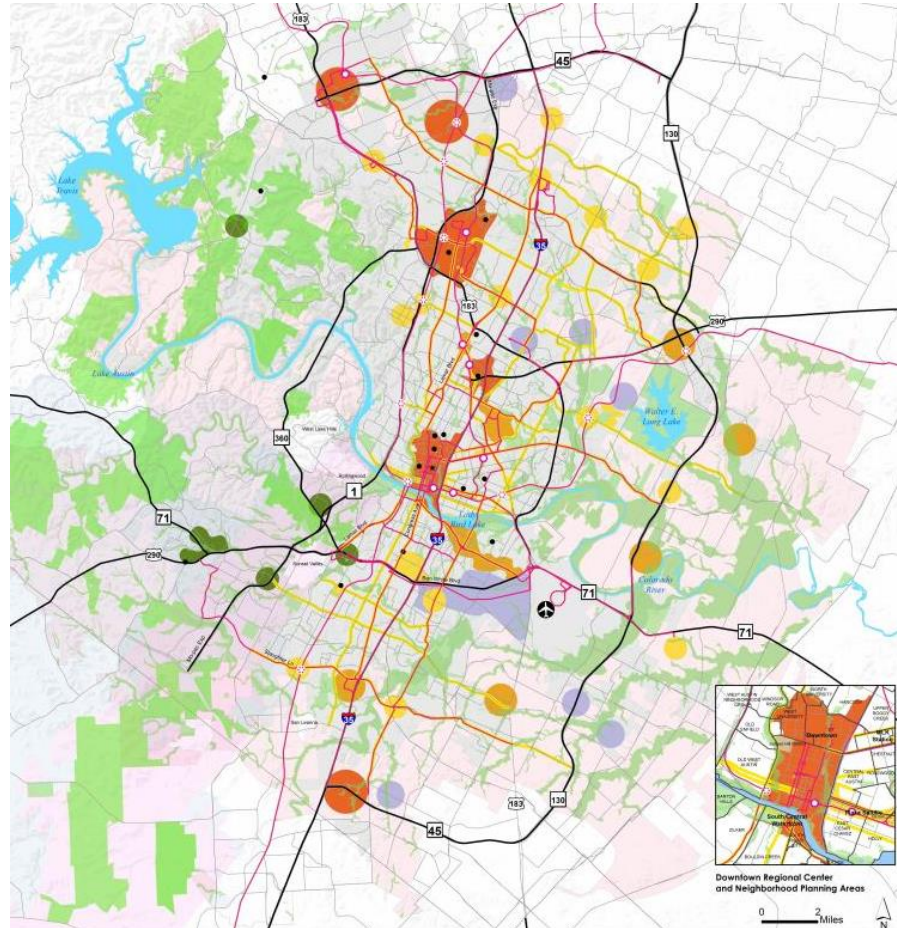
Build Scenarios

Evaluate Supply Influences*

Communicate Performance

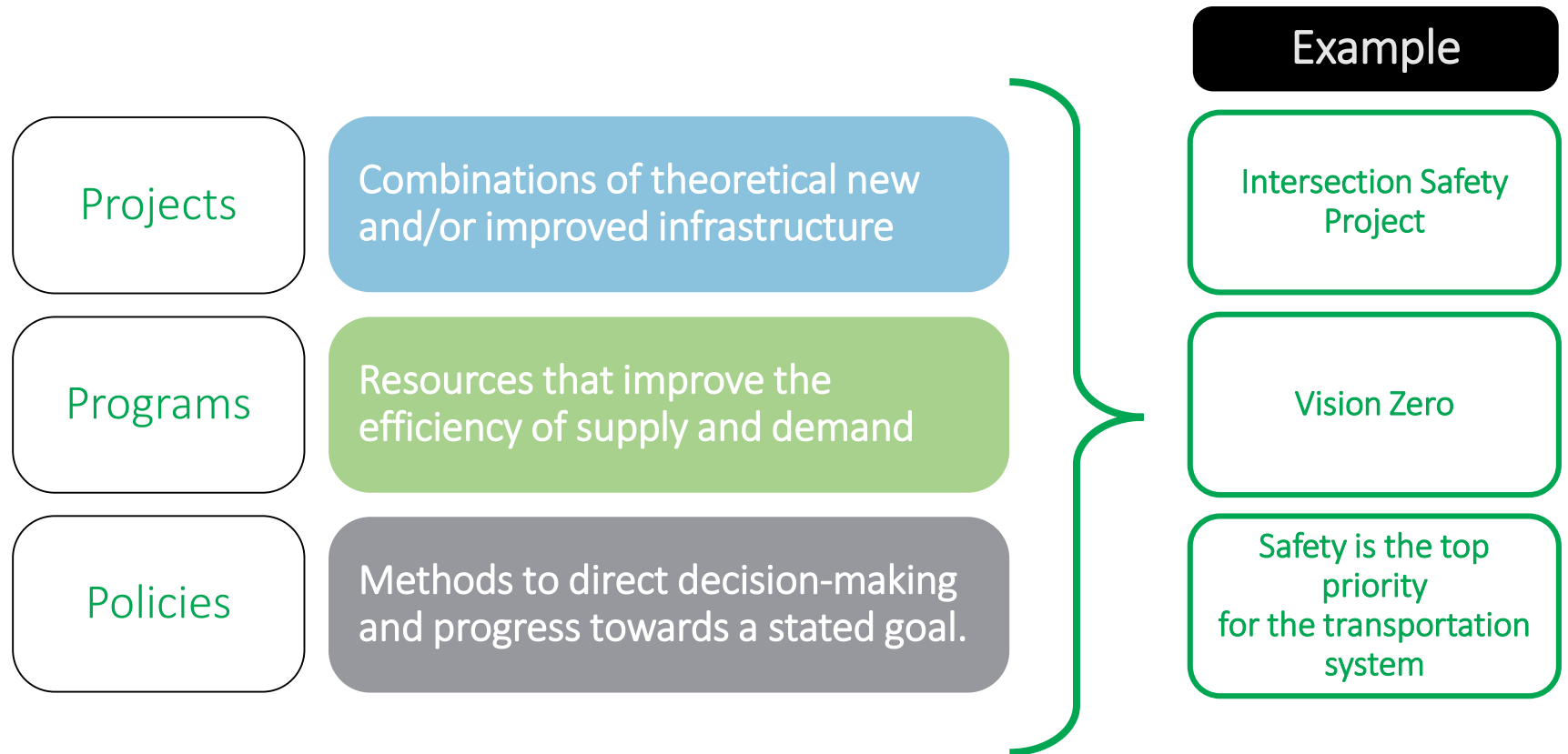
Building our Scenarios

Learn from
Imagine Austin
Scenarios,
developing the
Mobility Vision



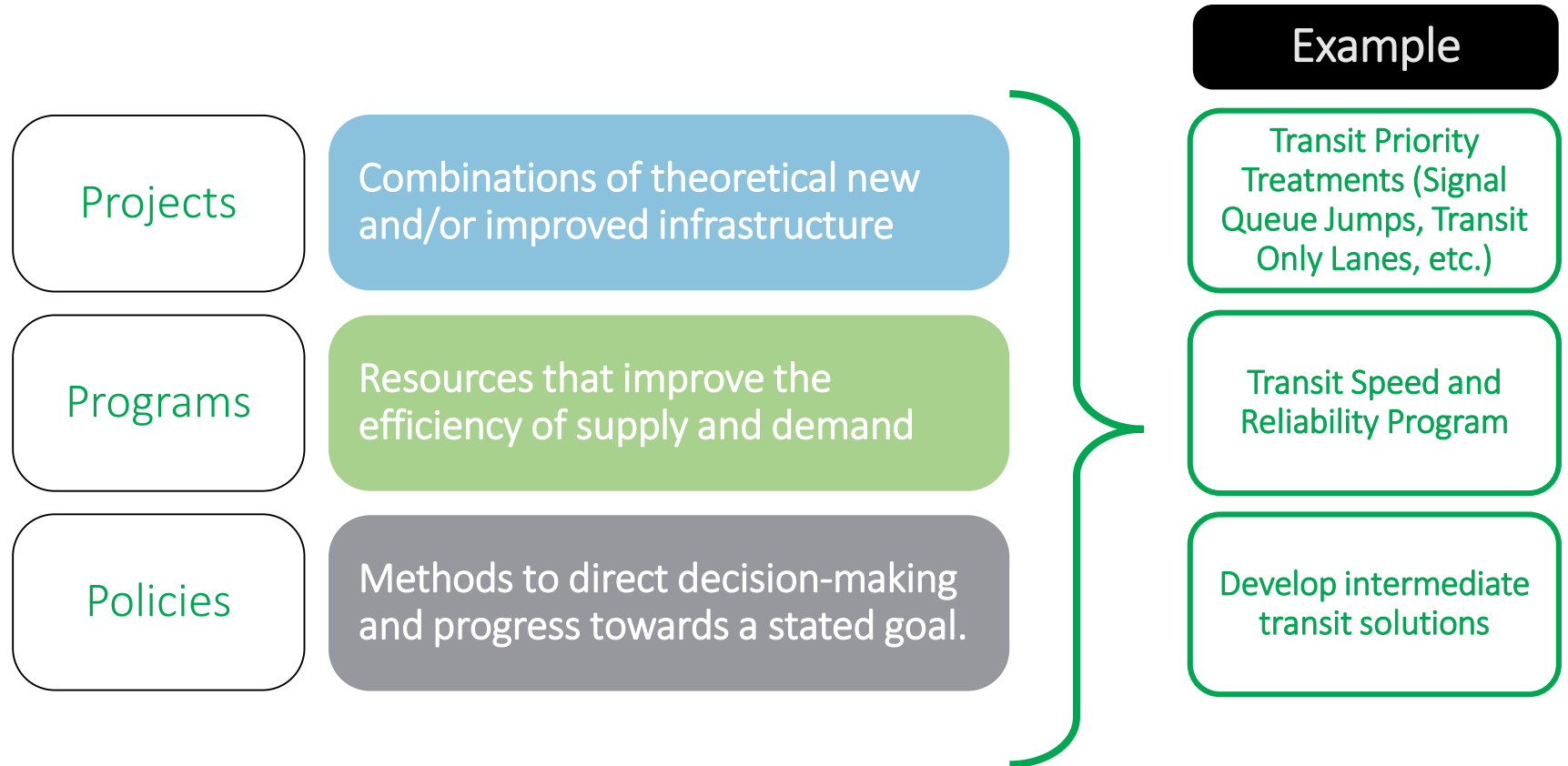
Mobility Strategies

Safety

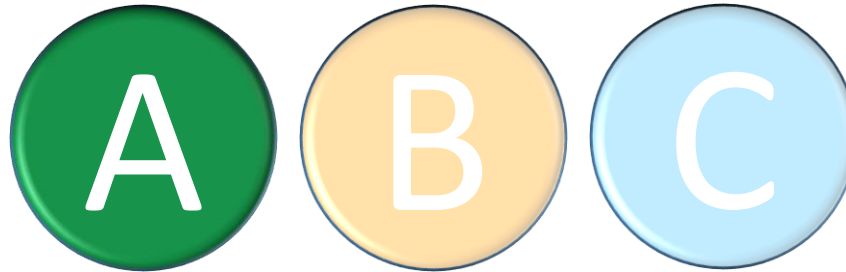


Mobility Strategies

Supply: Transit



Scenarios



Scenario A

Assumptions: Scenario A continues the current trend of transportation programming, investments and policy in Austin. This scenario assumes implementation of projects for roadways, public transit, bicycle, and pedestrian systems throughout the city. The scenario maintains the current trend of investments for all modes, existing levels of transportation demand management programming, and anticipates a small impact from automated and connected vehicles.

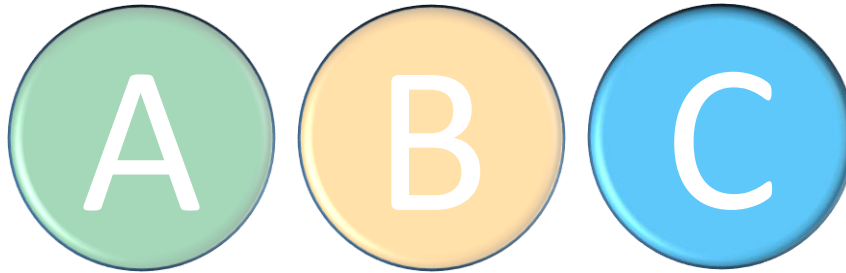
Scenarios



Scenario B

Assumptions: Scenario B modifies transportation programming, investment, and policy in Austin. This scenario increases the distribution of support for roadway, public transit, bicycle, and pedestrians along Imagine Austin Activity Corridors and within Activity Centers. The scenario assumes higher levels of transportation demand management programming and a modest impact from automated and connected vehicles.

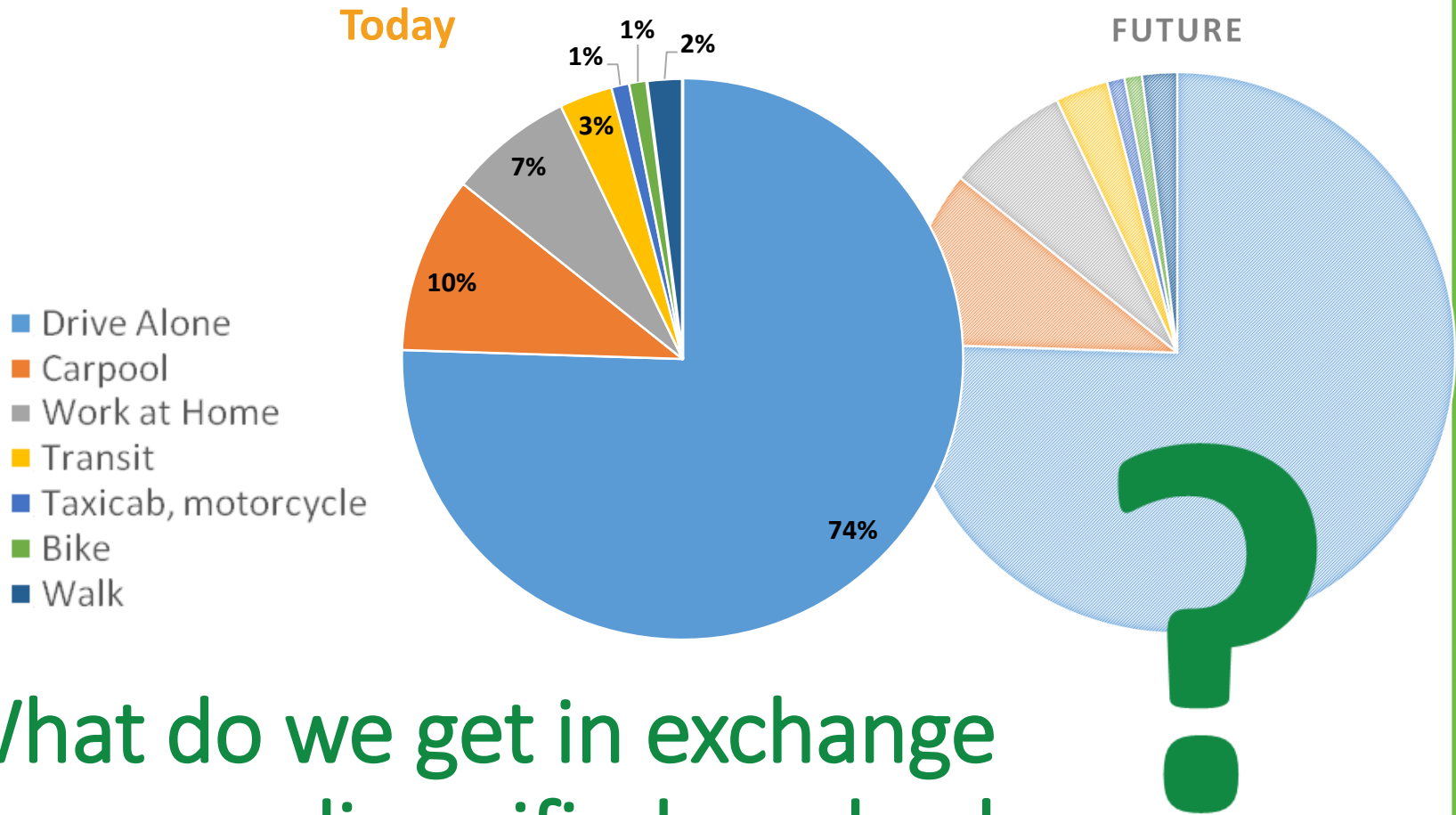
Scenarios



Scenario C

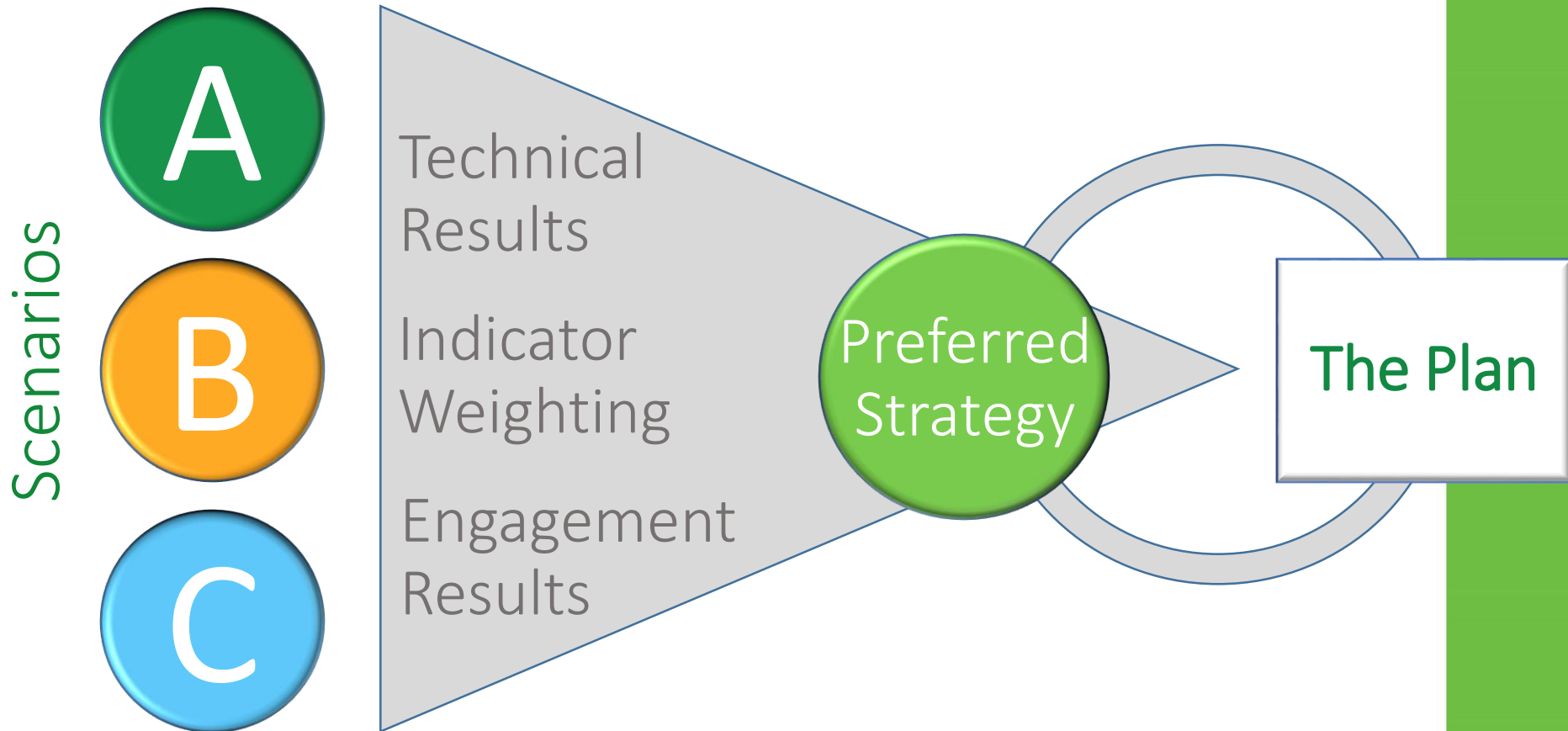
Assumptions: Scenario C significantly modifies transportation programming, investment, and policy in Austin. This scenario includes the highest degree of distribution amongst roadway, public transit, bicycle, and pedestrians along Imagine Austin Activity Corridors and within Activity Centers. The scenario assumes the highest level of transportation demand management programming and the highest impact of automated and connected vehicles on public transit, ridesharing and freight.

Motivation behind the Scenarios



What do we get in exchange
for more diversified mode-share

Evaluating our Scenarios



Public Engagement



Phase II Public Engagement

- Traffic Jam – Mar. 28 (Central Library)
- MetroQuest Survey
- Historically marginalized communities focus
 - Focus groups
 - Employer-based engagement
 - Coordination w/ Project Connect mobile engagement



Next Steps



Next Steps

- Share results
 - February: MCAC reviewed scenarios
 - Late March – End of May: Phase II Public Engagement
 - **Online Survey**
- Create preferred mobility strategy
 - Develop internal/external review processes
 - Draft ASMP plan document
 - Winter 2018/2019: Formal Adoption Process



Questions?



Joint Sustainability Committee | February 28, 2018
Austin Transportation Department

