

Cap Metro Proposed June 2018 Service Changes For Mueller

Prepared by Dave Neider

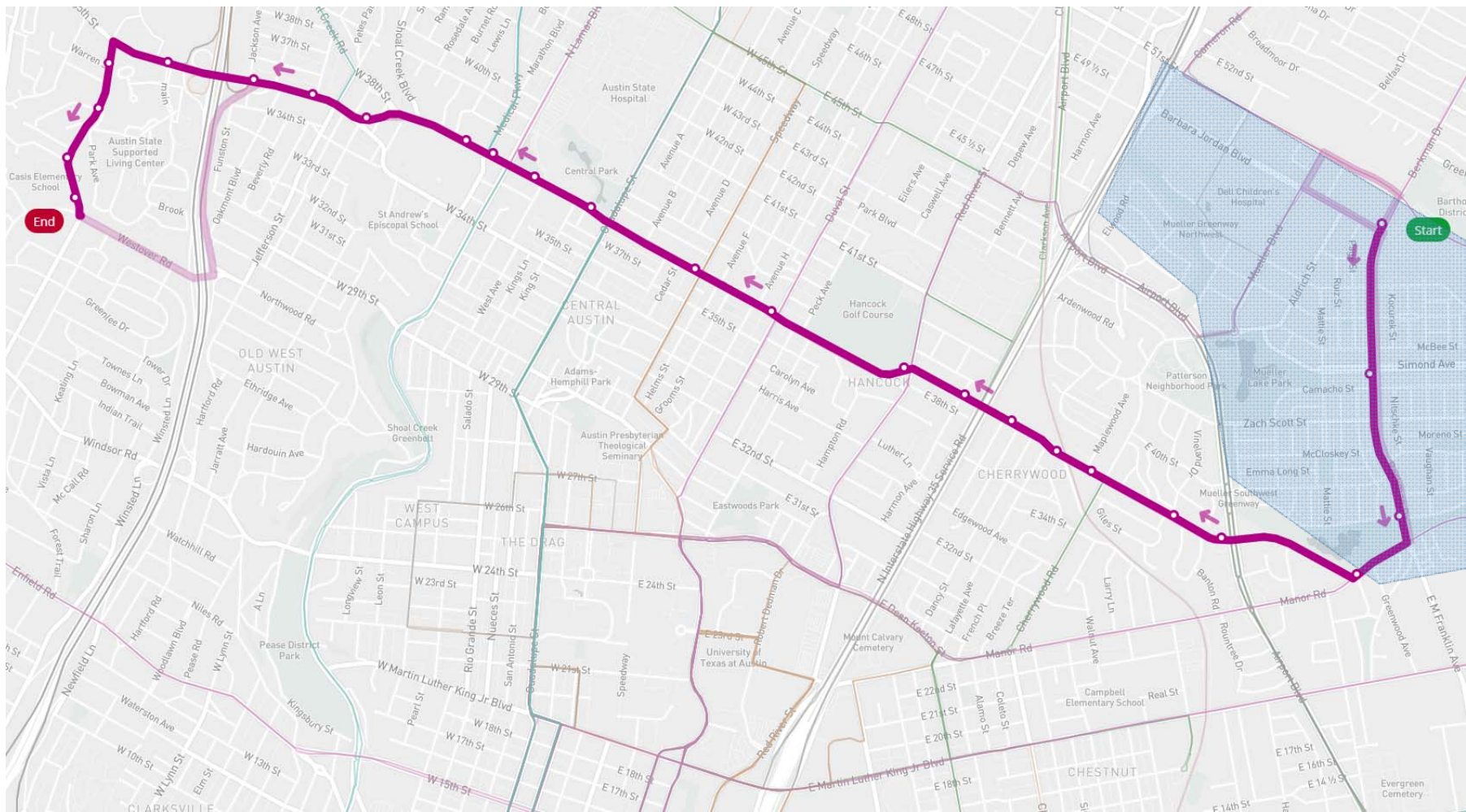
Proposed Changes Mueller Routes

Existing Route	Future Route in June Proposal (HF – High Frequency at least every 15min / 7 days)	Proposed Change
37		No longer serves Mueller
	10 (HF)	Replaces 37 on Mueller Blvd, serving east side of DT
350	350	No longer serves airport
20	20 (HF)	Will serve airport
320		Eliminated, replaced by 322 that doesn't directly serve Mueller
	300 (HF)	Added service along 51st
	335 (HF)	Added service along Berkman
485	485	
135	135	
492		Eliminated
Pickup	?	Pilot program

The proposal will go before the Capital Metro board of directors on Nov 15. If approved, the changes would take effect Sunday, June 3, 2018.

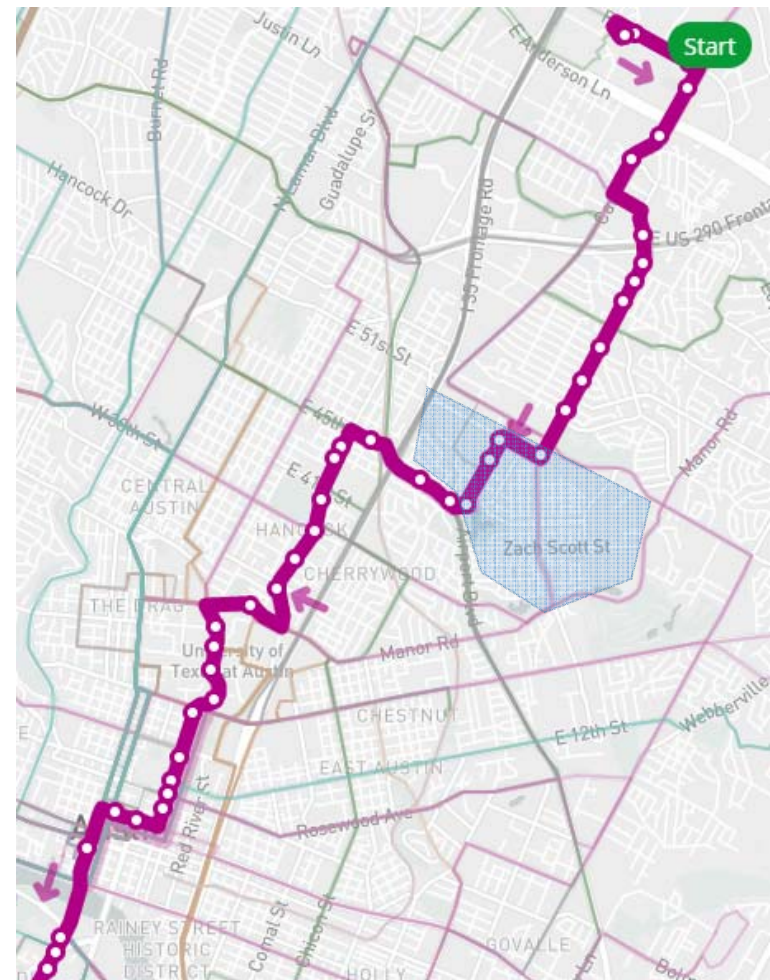
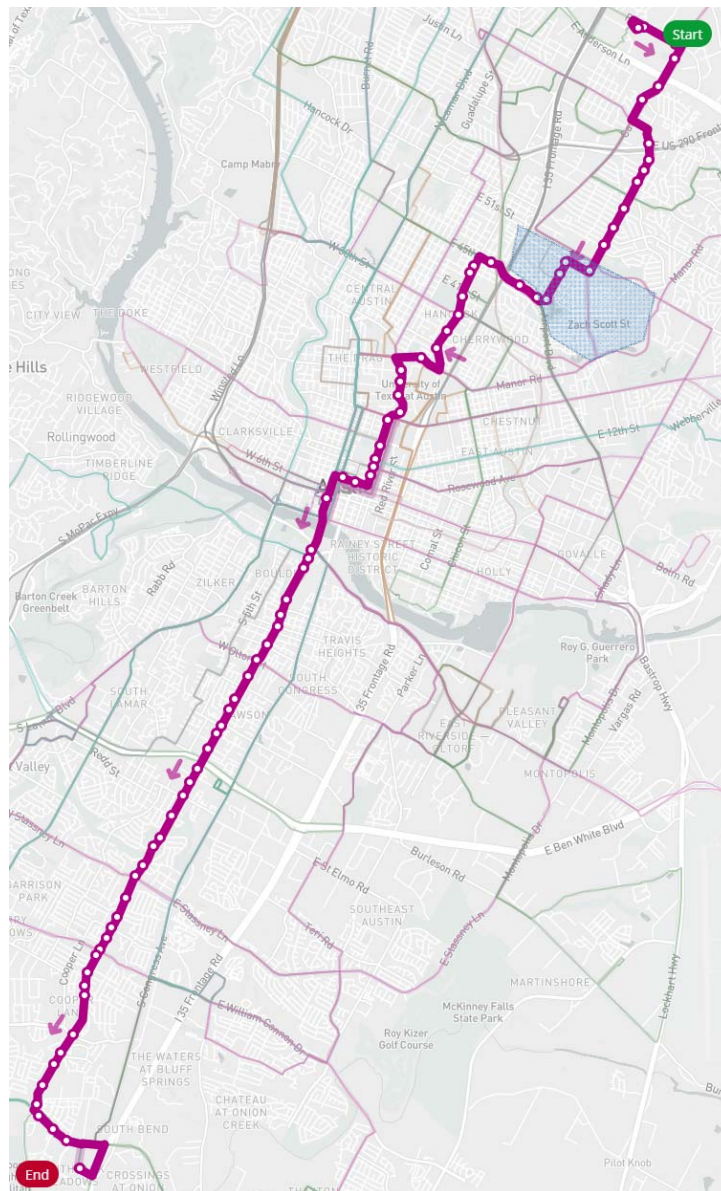
335

New Route Serves Berkman



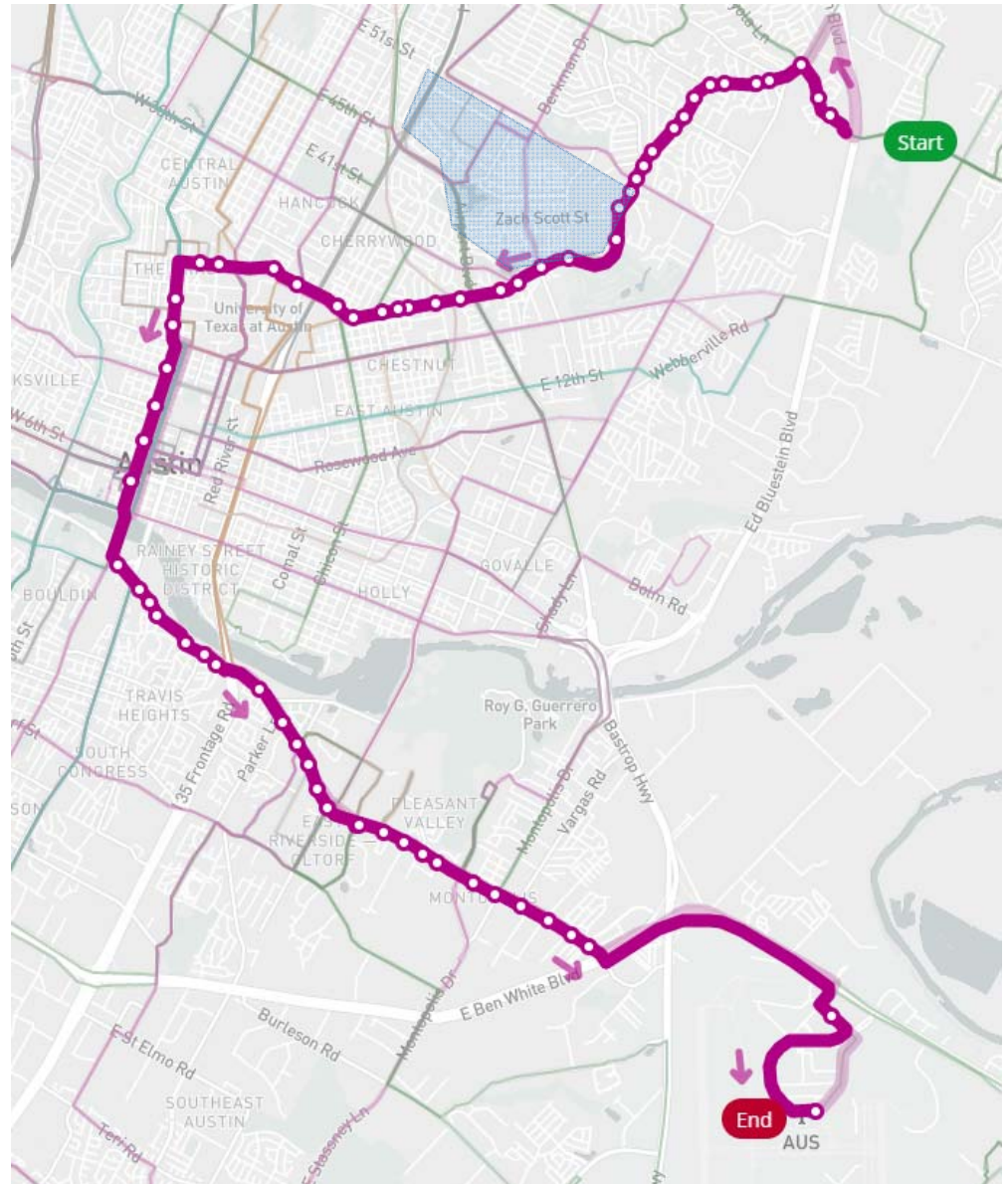
10

Replaces 37 on Mueller Blvd, serving east side of DT



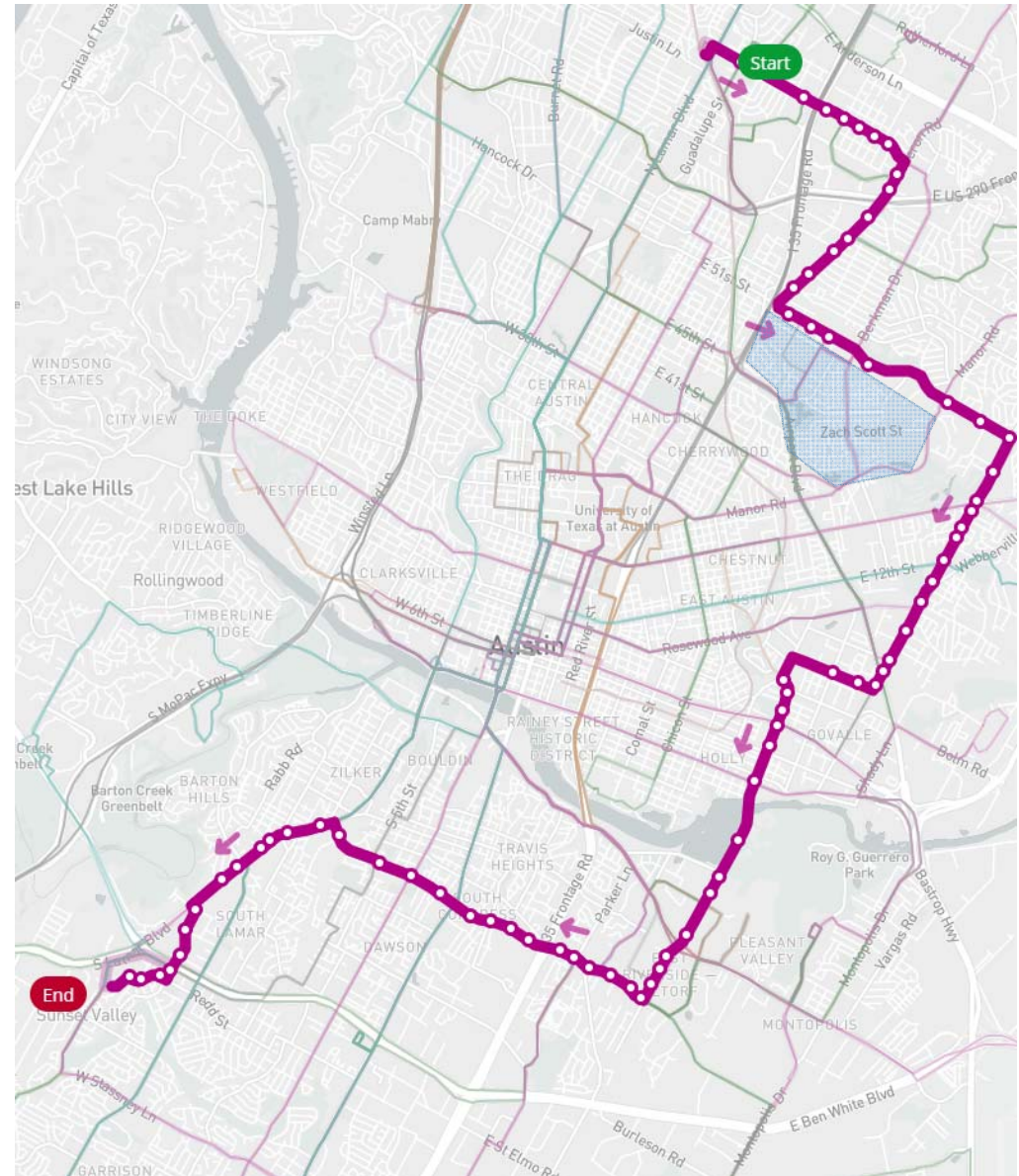
20

Will serve airport



300

Added service along 51st



Proposed system

June Service Change Portal

<https://www.capmetro.org/june2018/>

System Map

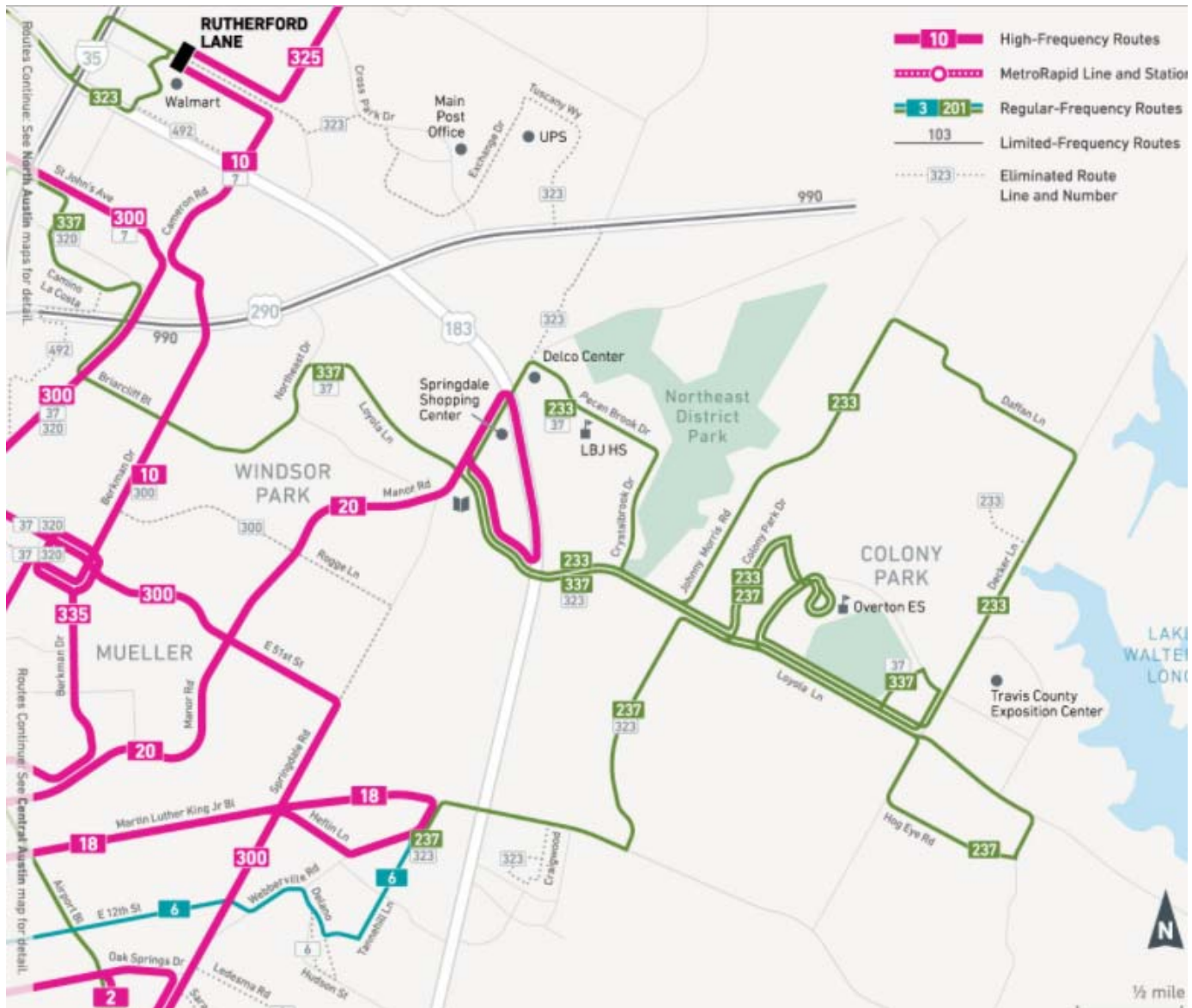
[https://www.capmetro.org/uploadedFiles/New2016/Plans and Development/Service Changes/Proposed-June-2018 System-Map.pdf](https://www.capmetro.org/uploadedFiles/New2016/Plans_and_Development/Service_Changes/Proposed-June-2018_System-Map.pdf)

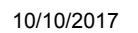
Interactive Map

<https://platform.remix.com/map/fe3d4c4?latlng=30.31125,-97.6894,z12>

Backup







300

