



B D G

Babendure Design Group
8140 Walnut Hill Ln. #950
Dallas, Texas 75231
214.265.1960
214.265.5552 (fax)
www.babendure.com



SOUTH ELEVATION – High Level Sign, Illuminated



**EAST ELEVATION – High Level Sign, Illuminated
and Mid Level Sign, Illuminated**



NORTH ELEVATION – High Level Sign, Illuminated



WEST ELEVATION - High Level Sign, Illuminated

The Castillian - An American Campus Community

- Located on the corner of San Antonio Street and West 24th Street.
- This building has 4 High Level Illuminated Signs; 1 each on the North, South, West and East elevations, and 1 Mid-Level Illuminated Sign on the East elevation.
- Low Level Signs include 1 Illuminated projecting flag identity located at the northwest corner, 1 Illuminated identity located on the West side, and vinyl applied to glass on the West side.



Low Level Sign - Non-Illuminated vinyl applied to glass in checkerboard pattern.



Low Level Sign - Illuminated Identification Sign located at the Leasing Center entrance. on the West side.



Low Level Sign - Illuminated Flag Sign at the northwest corner.

The Castillian - An American Campus Community
2323 San Antonio Street



B D G

Babendure Design Group
8140 Walnut Hill Ln. #950
Dallas, Texas 75231
214.265.1960
214.265.5552 (fax)
www.babendure.com



WEST ELEVATION - High Level Sign, Illuminated

**The Castillian - An American Campus Community
Night View**

- Located on the corner of San Antonio Street and West 24th Street.
- This building has 4 High Level Illuminated Signs, 1 each on the North, South, West and East elevations, and 1 Mid-Level Illuminated Sign on the East elevation.
- Low Level Signs include 1 Illuminated projecting flag identity located at the northwest corner, 1 Illuminated identity located on the West side, and vinyl applied to glass on the West side.



EAST ELEVATION - High Level Sign, Illuminated and Mid Level Sign, Illuminated



SOUTH ELEVATION - High Level Sign, Illuminated
NOTE: The Sign located on the North Elevation is the same design, also illuminated.

The Castillian - An American Campus Community
2323 San Antonio Street



BDG

Babendure Design Group
8140 Walnut Hill Ln. #950
Dallas, Texas 75231
214.265.1960
214.265.5552 (fax)
www.babendure.com

The Callaway House

- Located on the corner of West 22nd Street, San Antonio Street and Nueces Street.
- This building has 1 High Level Illuminated Sign on the East side.
- There are 2 Low Level signs, both illuminated. One is Channel Letters with white faces and dark returns, and the other is a projecting flag identity for Parking.



WEST ELEVATION - Low Level Sign, Non-Illuminated



EAST ELEVATION - High Level Sign, Non-Illuminated Letters.



NORTH ELEVATION - Low Level Sign, Illuminated Channel Letter Identity Sign

The Callaway House
505 West 22nd Street

Variance Support
The Callaway House

Marriott AC/ The Otis Hotel
Austin, Texas
Exterior Signage

April 9, 2018

31

B01/50



B D G

Babendure Design Group
8140 Walnut Hill Ln. #950
Dallas, Texas 75231
214.265.1960
214.265.5552 (fax)
www.babendure.com

The Callaway House - Night View

- Located on the corner of West 22nd Street, San Antonio Street and Nueces Street.
- This building has 1 High Level Illuminated Sign on the East side.
- There are 2 Low Level signs, both illuminated. One is Channel Letters with white faces and dark returns, and the other is a projecting flag identity for Parking.



EAST ELEVATION - High Level Sign, Non-Illuminated Letters.

The Callaway House
505 West 22nd Street



BDG

Babendure Design Group
8140 Walnut Hill Ln. #950
Dallas, Texas 75231
214.265.1960
214.265.5552 (fax)
www.babendure.com

The Crest at Pearl

- Located on the corner of San Antonio Street and West Martin Luther King Jr. Blvd.
- This building has 1 High Level Illuminated Sign at the southeast corner.
- There is one Low Level Non-Illuminated Sign at the main entrance.



SOUTHEAST ELEVATION - High Level Sign, Illuminated.



SOUTHEAST ELEVATION - Low Level Sign, Non-Illuminated

The Crest at Pearl

2323 San Antonio Street



BDG

Babendure Design Group
8140 Walnut Hill Ln. #950
Dallas, Texas 75231
214.265.1960
214.265.5552 (fax)
www.babendure.com

The Crest at Pearl - Night View

- Located on the corner of San Antonio Street and West Martin Luther King Jr. Blvd.
- This building has 1 High Level Illuminated Sign at the southeast corner.
- There is one Low Level Non-Illuminated Sign at the main entrance.



SOUTHEAST ELEVATION - High Level Sign, Illuminated.

**Variance Support
Crest at Pearl**

Marriott AC/ The Otis Hotel
Austin, Texas
Exterior Signage

April 9, 2018

B01/53

34

The Crest at Pearl
2323 San Antonio Street



BDG

Babendure Design Group
8140 Walnut Hill Ln. #950
Dallas, Texas 75231
214.265.1960
214.265.5552 (fax)
www.babendure.com

Variance Support
University House

Marriott AC/ The Otis Hotel
Austin, Texas
Exterior Signage

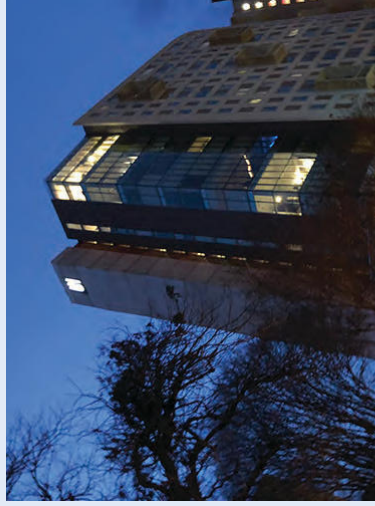
April 9, 2018



EAST ELEVATION - Low Level Sign, Illuminated Identity at Leasing Center entrance.

University House

- Located on the corner of San Antonio Street and West 21st Street.
- This building has 1 High Level Illuminated Identity Sign on the South side.
- There is 1 Low Level Sign, Illuminated Identity, at the Leasing Center Entrance on the East side.



SOUTH ELEVATION - Night View



SOUTH ELEVATION - High Level Sign, Illuminated Identity.

University House
2100 San Antonio Street