



Capital Metro – Project Connect Update
Austin City Council Mobility Committee
April 17, 2018





The benefits of regional transit investments

Affordability



Health



Neighborhoods



Economy

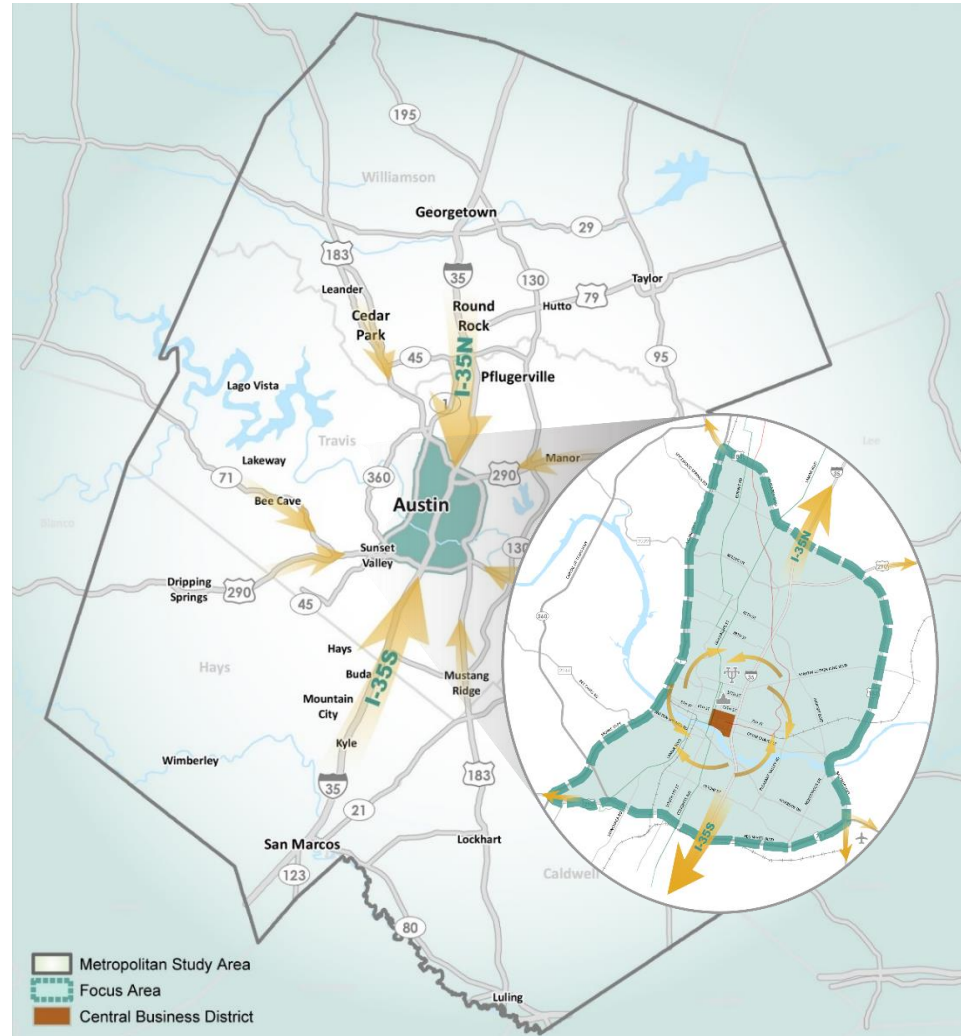


Safety



Environment

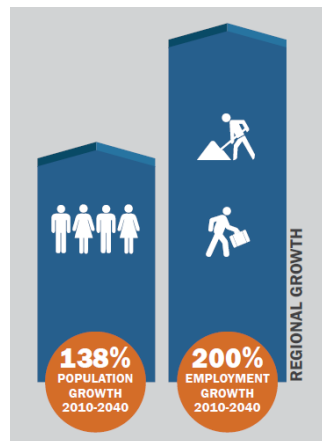




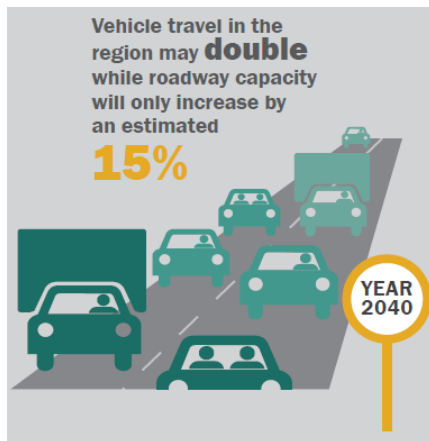


Addresses regional & local needs

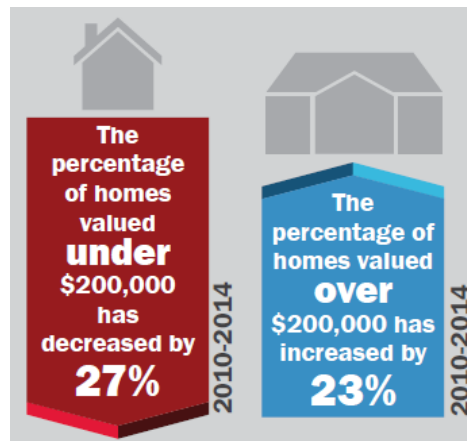
Explosive growth



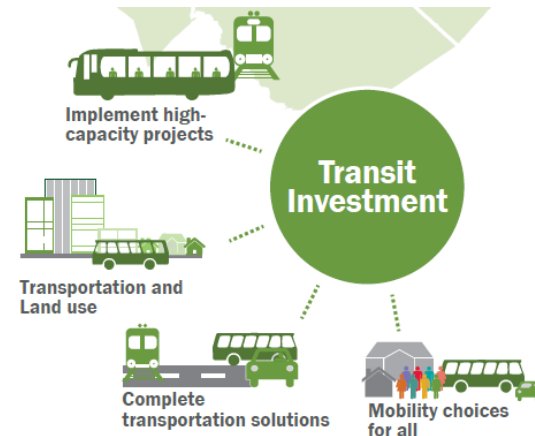
Limited ability to build more roads



Issues of affordability & cost of living

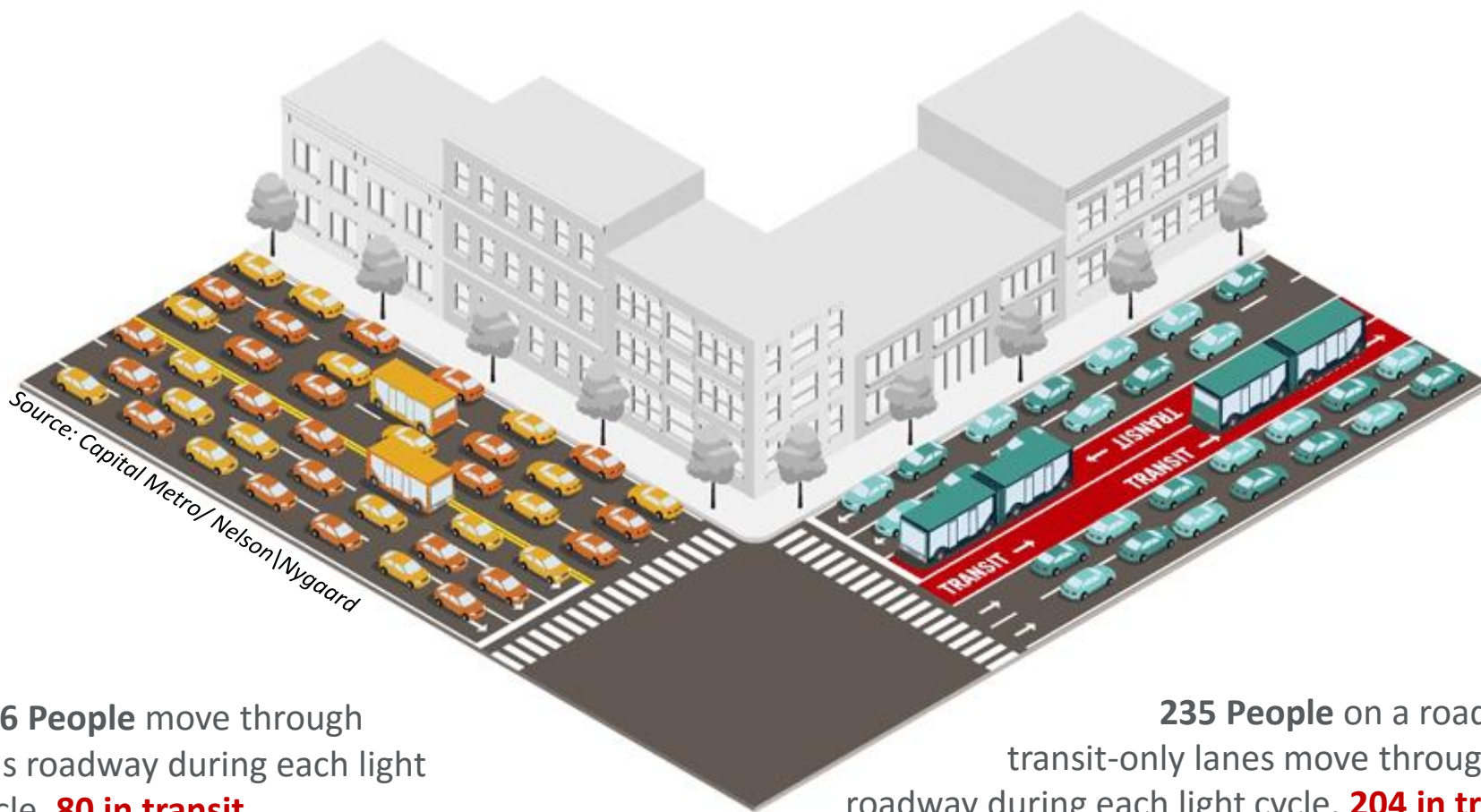


A regional transit system is needed

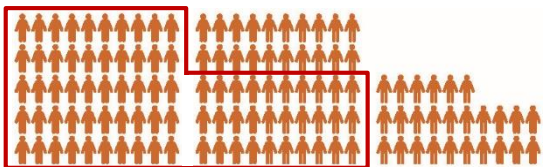




Moving people, not just cars



126 People move through this roadway during each light cycle. **80 in transit.**

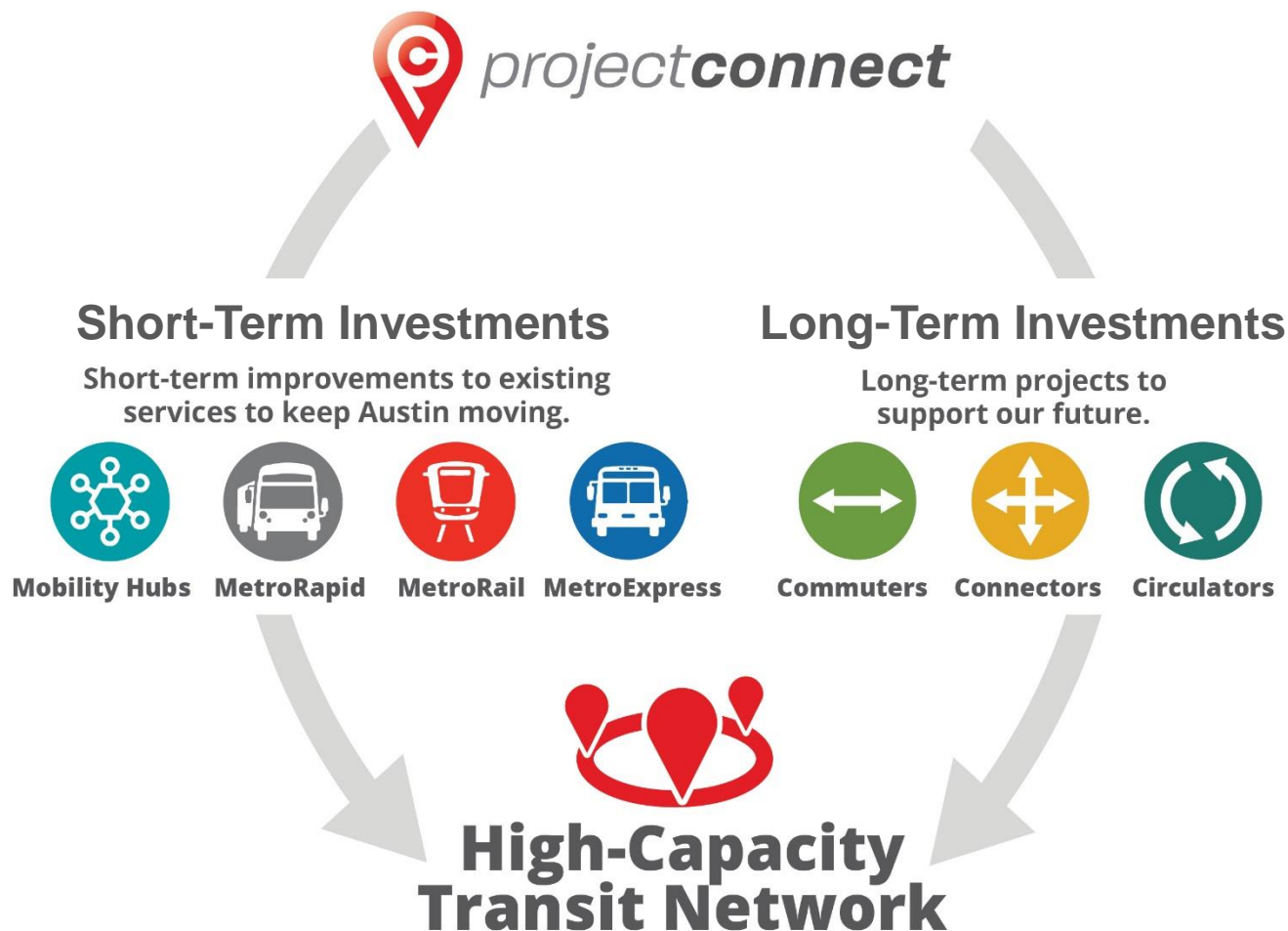


235 People on a road with transit-only lanes move through this roadway during each light cycle. **204 in transit.**





Project Connect's outcome





PROCESS & RESULTS



METRO



projectconnect

Local approach to project development

Step 1

Big Ideas, Bold Start

(Mar '16 – May '17)

Feasibility Analysis

- Corridor-based
- Mode neutral
- Based on previous plans and studies

Step 2

Real Solutions for Real Problems

(Jun '17 – Jun '18)

System Plan Analysis

- Link corridors
- Define right-of-way requirements
- Identify demand and costs

Step 3

Path to Implementation

(Jul '18 – Sep '18)

Finalizing Program of Projects









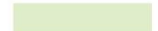
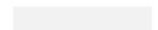
- Phasing and prioritization
- Funding opportunities

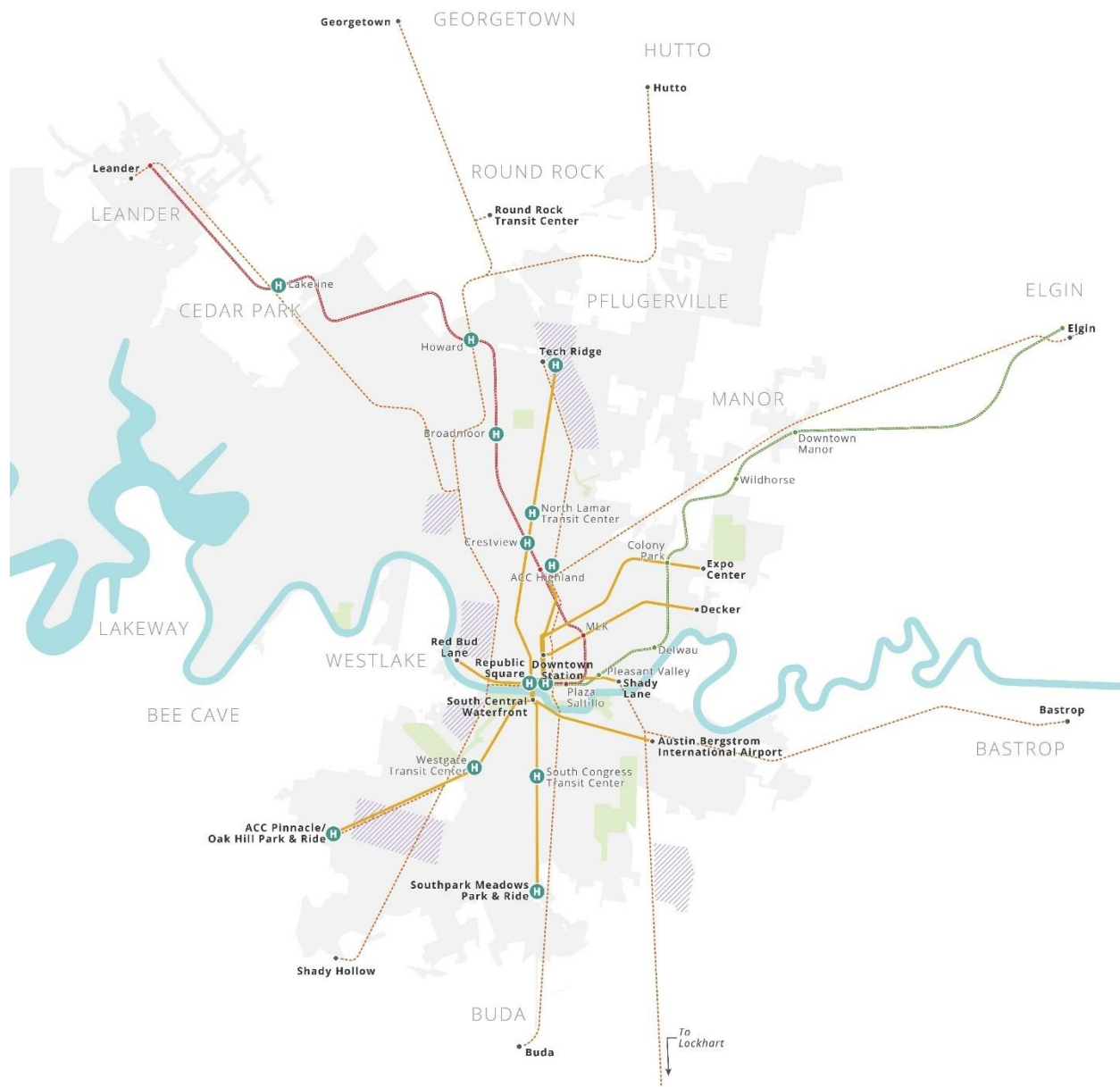
Public Involvement



Project Connect's potential: The regional perspective

LEGEND









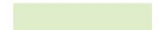
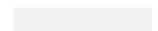
-  Connector Route
-  MetroRail
-  MetroExpress
-  Cap Remap Bus Route
-  Mobility Hub
-  Major Station
-  Mobility Innovation Zone
-  Water
-  Parks & Green Space
-  City of Austin

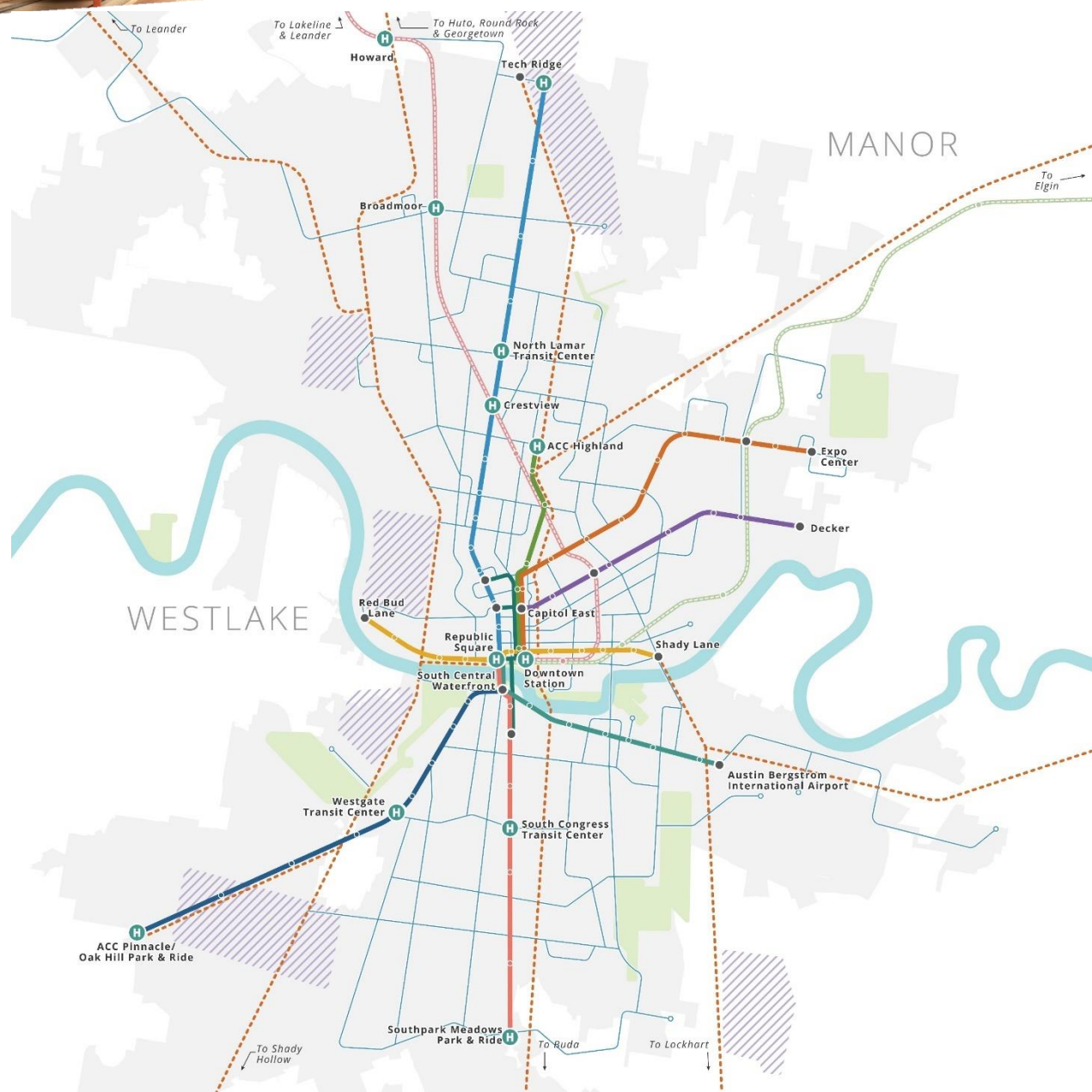




Project Connect's potential: The urban perspective

LEGEND









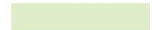
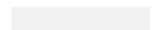
-  Connector Route
-  MetroRail
-  MetroExpress
-  Cap Remap Bus Route
-  Mobility Hub
-  Major Station
-  Mobility Innovation Zone
-  Water
-  Parks & Green Space
-  City of Austin





Project Connect's potential: The downtown perspective

LEGEND

-  Connector Route
-  MetroRail
-  MetroExpress
-  Cap Remap Bus Route
-  Mobility Hub
-  Major Station
-  Mobility Innovation Zone
-  Water
-  Parks & Green Space
-  City of Austin





Project Connect Draft System Plan



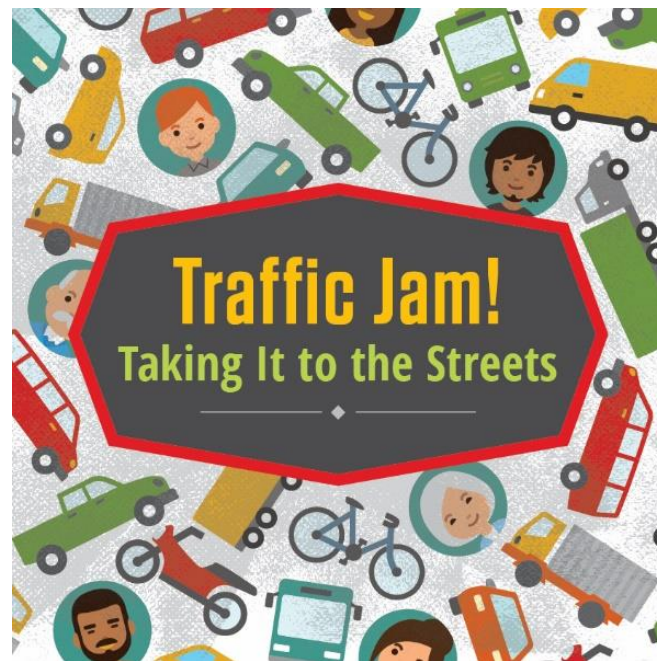


NEXT STEPS



Upcoming community involvement events

- Traffic Jam: Taking it the Streets
 - March 28, 4-8 at Central Library
- Six "Mini" Traffic Jams
 - **April 18, 6:30-8 at Turner Roberts Recreation Center**
 - Other meetings in April/May





Multiple feedback opportunities



- Online survey through projectconnect.com
- Telephone survey
- Door-to-Door outreach
- "Join the Movement" bus at over 30 locations



Ongoing partner coordination

- Austin Strategic Mobility Plan (ASMP)

- Meet **bi-weekly** since summer **2016**
- **3** Traffic Jams
- **6** MCAC meetings
- **Co-present** at neighborhood meetings

- Corridor Program Office (2016 Mobility Bond)

- Meeting since **spring 2017**
- **5** Cost & risk assessment meetings





Getting to 2020: Program of projects, phasing & prioritization



Capital Metro
Board
Resolution
Adopting High
Capacity
Transit System
Plan

JUNE
2018



Program of
Projects
Selection,
Prioritization
and Phasing

June-Sept
2018



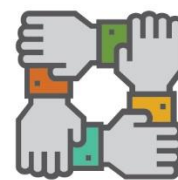
Engagement
Bus and
Community
Outreach for
Public
Feedback

June-Sept
2018



Capital Metro
Board
Resolution
Approving
Program of
Projects,
Prioritization
and Phasing

September
2018

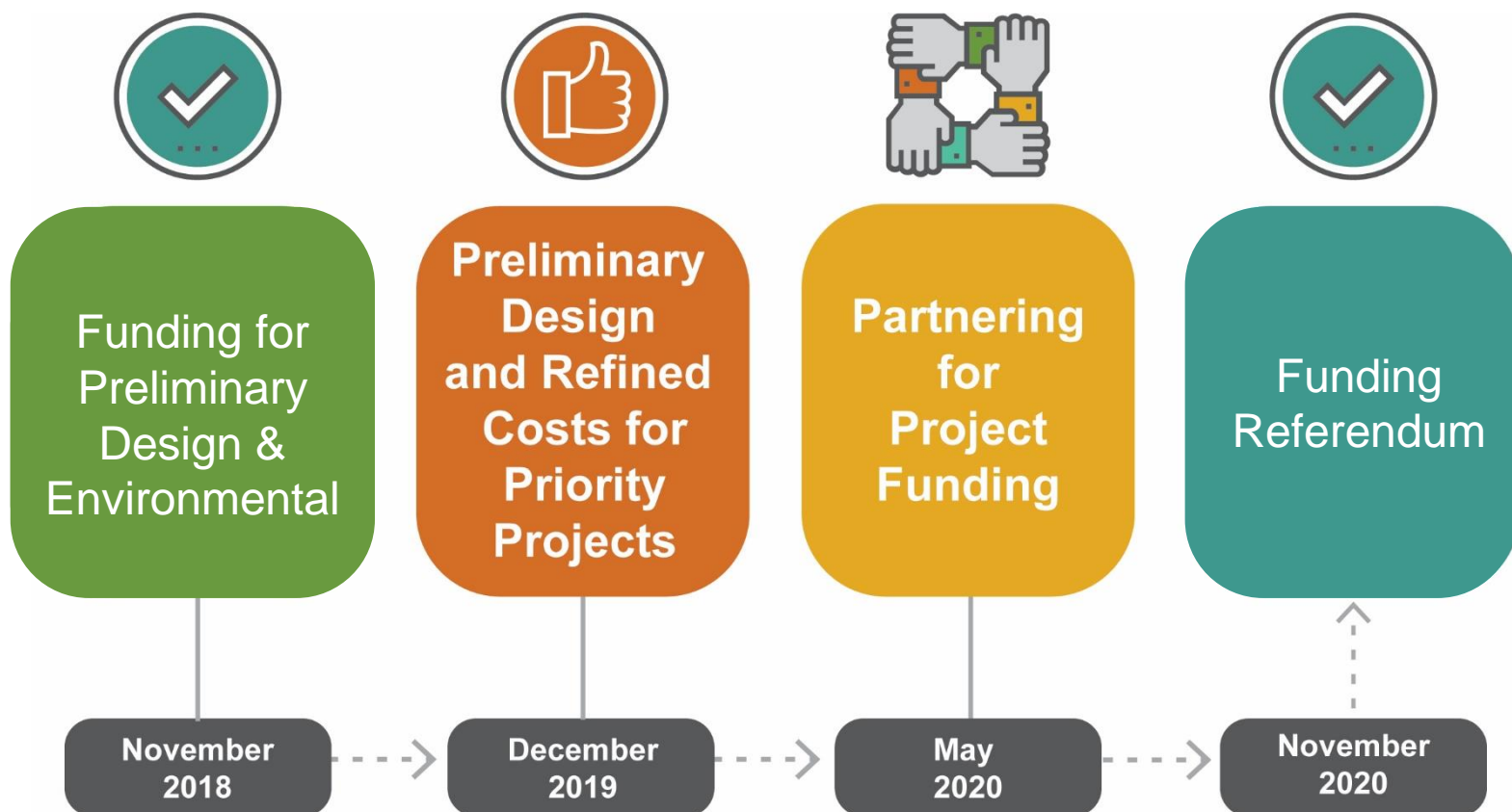


Partner
Agency
Adoption and
Support of
Program of
Projects

Sept/Dec
2018



Getting to 2020: Building community support





Thanks for your time and feedback!