



*Barton Springs
Bathhouse*
REHABILITATION

BARTON SPRINGS BATHHOUSE REHABILITATION PROJECT PURPOSE

Rehabilitation of Barton Springs Bathhouse

In accordance with the 2009 Barton Springs Master Plan and
the 2016 Zilker Bathhouse Zone Feasibility Study



BARTON SPRINGS POOL MASTER PLAN

GOALS STATEMENT

- Return site to its rightful glory with cleaner water and more enjoyable experience
- Propose appropriate additions and renovations to pool, buildings and grounds
- Respect unique natural and historical setting
- Accommodate significant demands on Austin's most popular park amenity



ZILKER BATHHOUSE ZONE FEASIBILITY STUDY

PROJECT PLANNING PRIORITIES

- Focus on grounds and facilities on the north side of Barton Springs Pool and how they interact
- Provide safe, durable park facilities capable of handling increasing use for 50 years
- Appreciate the special environment and history of the Barton Springs zone
- Increase ability of facilities and staff to deliver enhanced programs and amenities
- Plan for exemplary, sustainable facilities
- Leverage resources with public/private partners



ZILKER BATHHOUSE ZONE FEASIBILITY STUDY

INFRASTRUCTURE KEY FINDINGS

- Water quality elements should be considered
- Pedestrian circulation is conflicted and major pathways are inadequate
- Public restrooms and amenities need improvement
- Primary electric supply is old and overloaded
- Directional and Interpretive signage should be enhanced
- Vehicle circulation is hazardous; consider realignment and develop transit options
- Bike storage and parking could be improved



ZILKER PARK BATHHOUSE PARKING LOT RECONFIGURATION



ZILKER BATHHOUSE ZONE FEASIBILITY STUDY

BATHHOUSE KEY FINDINGS

- Sheffield spaces, attic workshop and some storage elements are non-conforming use and construction
- Consider pedestrian entry(s) relocation with more automated control
- More exits are required for building and pool users
- Plumbing systems should be replaced
- Additional family restrooms are needed
- Visitor/information function needs staffing and possibly improved location

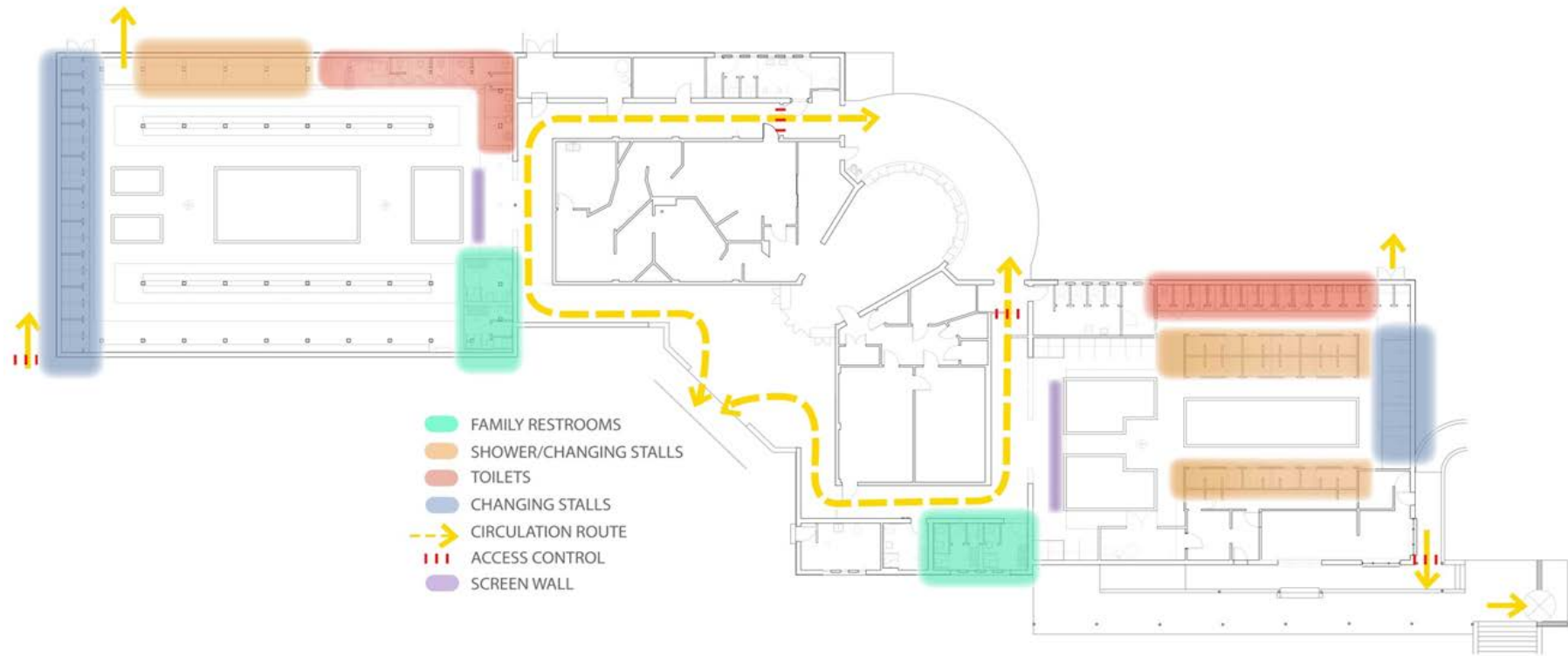


ZILKER BATHHOUSE ZONE FEASIBILITY STUDY

BATHHOUSE KEY FINDINGS CONT.

- Aquatics needs adequate and expanded spaces for staff, first aid and storage
- Both dressing areas are larger than current usage
- Most changing stalls need major repairs and/or modifications
- Number of shower stalls should be increased
- Canopy structures need significant repairs
- Some (west facing) bathhouse walls may need reinforcing
- Watershed biologist space should be included in the bathhouse

Barton Springs Bathhouse Areas Of Repair



BATHHOUSE REHABILITATION TENTATIVE SCHEDULE

