



BCP PARTNER EDUCATION SUMMARY

FY 2018 First Quarter: October 1- December 31, 2017

City of Austin, Travis County, The Nature Conservancy, Travis Audubon, Westcave & Wild Basin

Outreach & Education (All Partners)

Activity	Location	Events	Youth	Adults	Volunteer Hours
Guided Hikes	Onsite	147	497	1,252	333
Programs / Presentations	Onsite	28	609	306	20
	Offsite	14	443	579	110
Land Stewardship	Onsite	67	6	135	789.5
Ecological Monitoring	Onsite	29		49	176
Visiting Groups / Educators	Onsite	12	42	66	100
Administrative Help	Onsite			6	11.5
Campouts	Onsite	1	8	12	
Training	Onsite	1		8	3
	Offsite	1		24	
Oct – Dec 2017 Total		300	1,605	2,437	1,543

Monetary value of volunteer work (\$25.11/hour): **\$38,744.73**

SELF-GUIDED PUBLIC ACCESS (Estimated Annual Visitation)

These numbers are not included in the Outreach & Education chart above. They represent a sample of BCP areas with public access – we hope to include more complete visitation numbers in future reports.

Hamilton Pool (Travis County): 173,136

Wild Basin (St. Edward's Univ. & Travis County): 10,000+

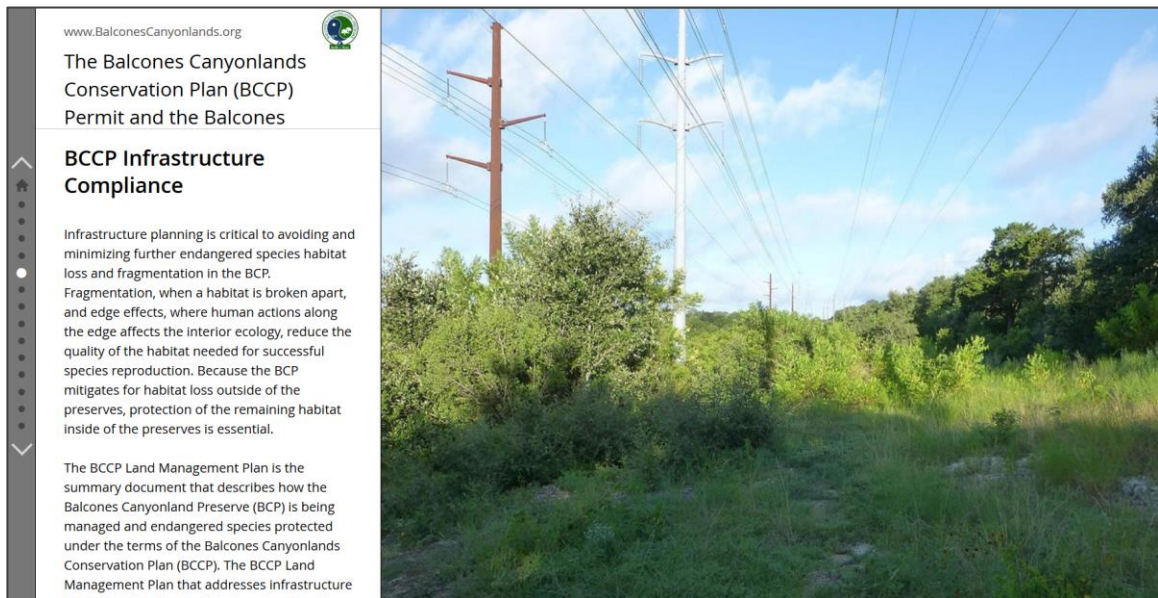
Baker Sanctuary (Travis Audubon): 468

Westcave - BCP portion (LCRA): 6,840



1st Quarter Highlights

CITY OF AUSTIN



- In October, BCP partners hosted a workshop for 128 field staff and managers from local infrastructure providers. This training promotes compliance with BCCP mitigation requirements and for the first time this year included an online toolkit (pictured above), which can be viewed at <https://goo.gl/W5w77q>
- This year's City Wildland Conservation Division appreciation dinner and awards were preceded by staff-led guided hikes – and a guided cave visit – for dedicated volunteers. More than 2,000 hours of volunteer service were recorded on the Wildlands (which includes the Balcones Canyonlands Preserve) last year including golden-cheeked warbler surveys, land stewardship and native plant nursery work, and leading guided hikes.



BAKER SANCTUARY (TRAVIS AUDUBON)



- In November, the 4th grade class of Deer Creek Elementary (LISD) visited Baker Sanctuary (pictured above). They learned about central Texas flora and fauna, invasive species, and human impacts on the environment as part of their Ecology unit.
- More than 230 4th grade students at Deer Creek and Cypress Elementary Schools (LISD) got to see presentations on golden-cheeked warbler natural history and central Texas ecology.
- A new kiosk sign was installed at the Baker Spring trailhead to educate hikers about the golden-cheeked warbler and the history of Baker Sanctuary.



BCP PARTNER EDUCATION SUMMARY

FY 2018 First Quarter: October 1- December 31, 2017

City of Austin, Travis County, The Nature Conservancy, Travis Audubon, Westcave & Wild Basin

TRAVIS COUNTY



- At the beginning of November, 23 Oracle employees came out to volunteer on the preserve (pictured above). They worked for three hours removing invasive vinca, creating space for diverse native plants to grow.
- Travis County is partnering with Concordia University and the City of Austin to provide a series of free educational lectures for BCP neighbors. The first event of the series featured City of Austin Park Ranger LaJuan Tucker giving an engaging presentation about ways to attract butterflies, birds and other wildlife to residential yards. Each lecture will focus on a different aspect of living with the natural world, from preventing oak wilt to the benefits of landscaping with native plants. Each lecture is paired with an interpretive hike on the preserve.
- The BCCP and BCP will be featured in a new textbook for high school and university students. Travis County staff was invited to contribute a profile of the BCCP as an example of cooperative federalism. The book is designed to meet the Texas Higher Education Authority learning objectives for United States Government courses and will ultimately be available on the internet for any interested student or faculty member, including home-schooled students.



BCP PARTNER EDUCATION SUMMARY

FY 2018 First Quarter: October 1- December 31, 2017

City of Austin, Travis County, The Nature Conservancy, Travis Audubon, Westcave & Wild Basin

BARTON CREEK HABITAT PRESERVE (THE NATURE CONSERVANCY)



- Visitors from the China State Forestry Administration (pictured above) toured two projects of The Nature Conservancy in Texas, including the Barton Creek Habitat Preserve, where they learned about the BCP.
- St. Edward's University, Huston-Tillotson University, and Trinity University used the Barton Creek Habitat Preserve for course work or research.



BCP PARTNER EDUCATION SUMMARY

FY 2018 First Quarter: October 1- December 31, 2017

City of Austin, Travis County, The Nature Conservancy, Travis Audubon, Westcave & Wild Basin

WILD BASIN WILDERNESS PRESERVE



- UT environmental science student, Ayu Larasati, pictured above left setting up a motion-triggered game camera, is conducting her senior capstone research project at Wild Basin by studying wildlife movements across the boundaries of the preserve, looking at the impacts of residential areas, fencing, and other barriers on movement patterns of different species.
- Wild Basin hosted a volunteer appreciation hike and lunch at McKinney Roughs on December 20th (pictured above right) to celebrate our many dedicated and hard-working volunteers who work in our trail guiding and land stewardship programs.
- With support from 3M, the Wild Basin Creative Research Center is collaborating with AISD High School science specialists, teachers, and students to engage them in the "Austin Wildlife Watch" project. Austin Wildlife Watch is a collaboration of Wild Basin, the City of Austin, Texas Parks and Wildlife, Austin Science and Nature Center, and The Nature Conservancy. The partnership trains AISD science teachers and specialists in utilizing the Austin Wildlife Watch project in their classrooms and field trips, integrates STEM high school students and the public into the scientific process, and trains environmental science undergraduate students to serve as guides on high school field trips.



BCP PARTNER EDUCATION SUMMARY

FY 2018 First Quarter: October 1- December 31, 2017

City of Austin, Travis County, The Nature Conservancy, Travis Audubon, Westcave & Wild Basin

WESTCAVE PRESERVE



- The Westcave Christmas Bird Count (pictured above) was a success with 121 birds species identified. The circle is 15 miles in diameter and covers 122,000 acres.
- In late October, our cave researcher from the University of Texas Jackson School of Geosciences provided an update presentation and cave tour to staff, interns, and some of our volunteers. This has enhanced our knowledge and provided new material to share with our guests.
- Thanksgiving Weekday Tours: Since most local school districts were out the full week of Thanksgiving, we offered for the first time two tours per day on the Monday, Tuesday, and Wednesday before Thanksgiving. Average attendance was just over 18 people and about 40% were children. We plan to repeat in 2018.
- As 2017 ended, our attendance report shows that we had record overall attendance, and both our adult and child attendance was up for the year.



BCP PARTNER EDUCATION SUMMARY

FY 2018 First Quarter: October 1- December 31, 2017

City of Austin, Travis County, The Nature Conservancy, Travis Audubon, Westcave & Wild Basin

ACTIVITY DEFINITIONS

Guided Hikes

Hikes on the BCP guided by staff or volunteers; includes education about the BCP, wildlife, and land management practices.

Programs / Presentations

Presentations by staff or volunteers about the BCP and related scientific and land management topics; includes educational events and programs.

Land Stewardship

Volunteer work on the BCP that includes removing invasive species, preparing for prescribed burns, creating fuel breaks, restoring habitat, patrolling, and maintenance of grounds, trails & facilities.

Ecological Monitoring

Includes surveys of endangered species, vegetation, and nuisance species such as cowbirds, hogs and red imported fire ants.

Campouts

Campouts on the BCP, usually organized by outside groups such as the Boy Scouts.

Visiting Groups / Educators

Groups visiting or hosting an event on the BCP that was not organized by BCP staff.

Administrative Help

Volunteer help with administrative work such as office work, research, and event coordination.

Training

Volunteer training & other trainings that support the BCCP's mission. Examples include educating emergency response and infrastructure maintenance staff about protecting sensitive environmental features and complying with clearing restrictions.