

# START IT UP!

How the Seaholm Waterfront Can Get Back to Work for Austin



**AUSTIN  
PARKS  
FOUNDATION**



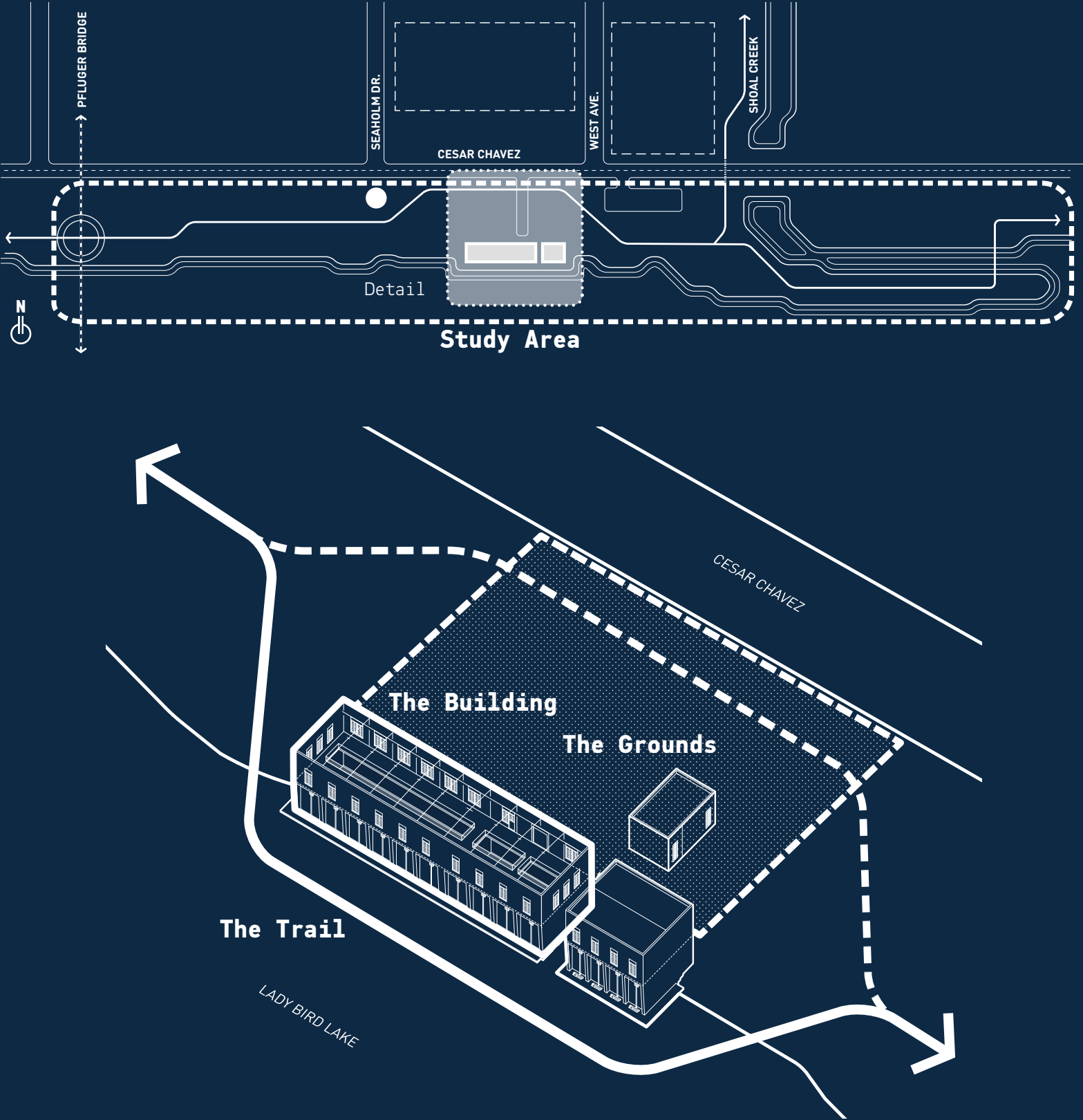
**The Trail  
Foundation**



**Studio Gang**



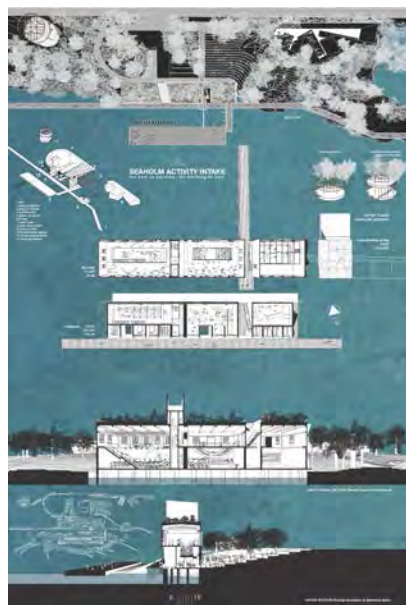
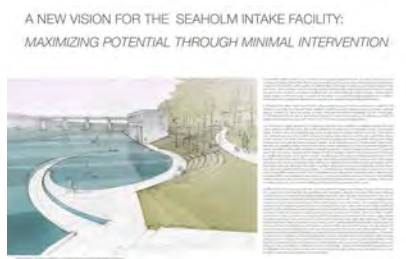
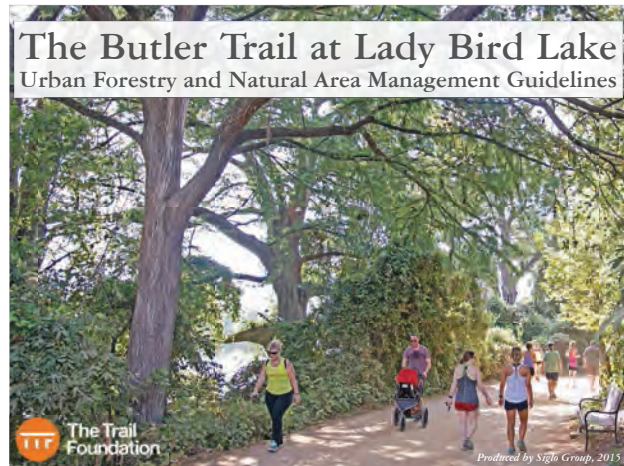
# START IT UP!





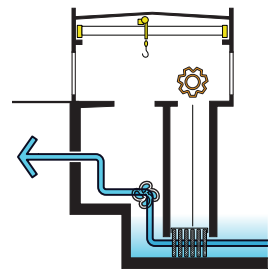
## Study the Work of Others

Plans for the Seaholm District and Ann and Roy  
Butler Trail from 2001 to the present

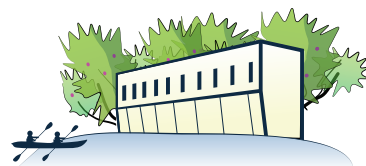


# Designing A New Future

## Principles and Process



**DISCOVER WHAT’S THERE**  
Look for inspiration from the Intake Building and site and the unique components of its design. Repurpose past functions for a new future.



**EMBRACE HISTORIC INTEGRITY**  
Identify the character-defining features of the Intake Building for preservation and reimagine what the balance of these features could become.



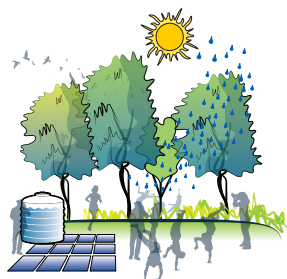
**RESTORE AND DIVERSIFY ECOLOGY**  
Implement native planting strategies to restore the landscape and lake edge. Supplement the existing heritage trees to create areas of shade and microclimates.



**LISTEN TO COMMUNITY + EXPERTS**  
Build on the diversity and knowledge of the people who know the city best by including residents and local experts in an inclusive engagement and design process.



**CONVERGE CITY, TRAIL, AND LAKE**  
Network with nearby assets, such as the new Central Library, to connect the city, trail, and lake. Work to cross-pollinate programs and activities.



**BUILD IN SUSTAINABILITY**  
Build sustainable principles into both design and operational models. Explore ways that native landscape and ecology can be linked within the design and consider opportunities to support revenue generation.



# Listening and Learning

## Research and Engagement



Open House and survey event, June 2017



Community discussion at an Open House event, September 2017



Presentation to design community, September 2017



Open House event at the Intake Building, December 2017

41 on-site workshops, presentations, open houses, and technical reviews  
+  
+1100 online survey responses

### 2017 ENGAGEMENT DATES

#### MAY

Seaholm Waterfront Press Event at City Hall: Project is launched, APF/TTF partnership is announced, Major Adler voices support

Planning Partners Meeting #1

Seaholm Waterfront Open House #1: The community shares ideas about what they would like to do at the Seaholm Intake Building and surrounding parkland.

Survey conducted as a follow up to Open House #1 asks the community, 'What do you want to do at the Seaholm Waterfront?'

#### AUGUST

Asian American Focus Group

#### SEPTEMBER

African American Focus Group

Hispanic Community Focus Group

Technical Advisory Group Meeting #1 & Design Community Salon

Planning Partners Meeting #2

Seaholm Waterfront Open House #2: Initial findings are shared and feedback is gathered on potential activities and uses of this unique civic asset.

#### OCTOBER

Survey conducted as a follow up to Open House #2 asks community to provide feedback on activities and uses presented at the open house (September 23- October 31).

#### NOVEMBER

Planning Partners Meeting #3

Technical Advisory Group Meeting #2

#### DECEMBER

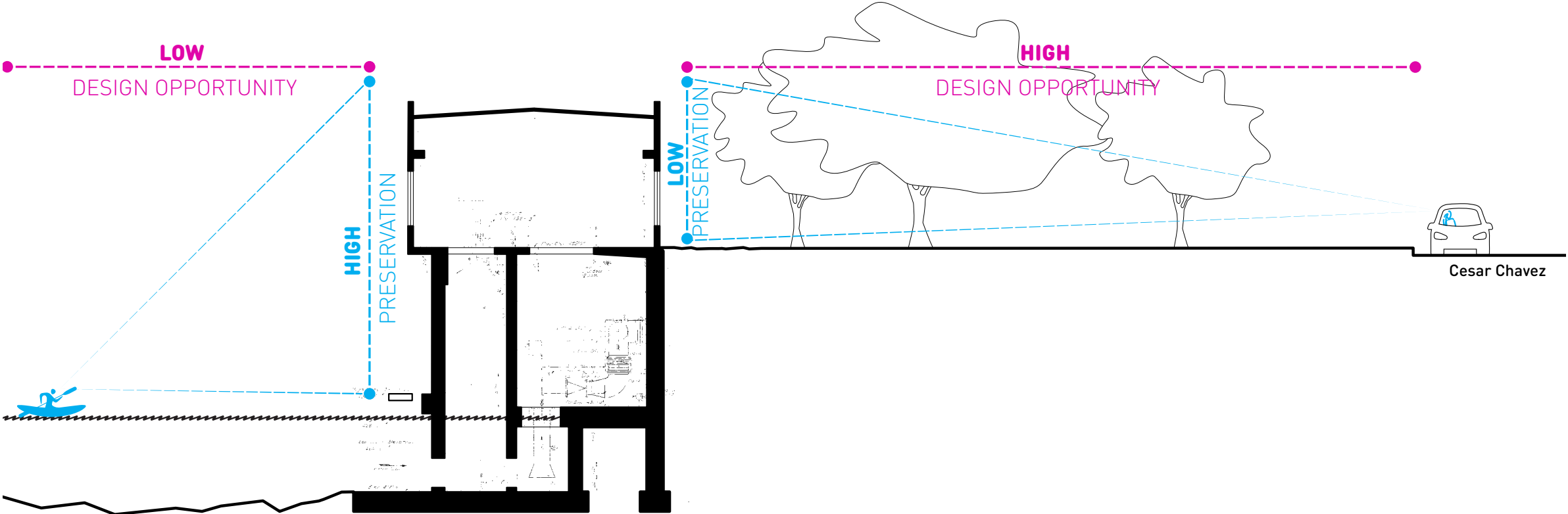
Seaholm Waterfront Open House #3: Three proposed design options are shared with the community to gather feedback to help refine the final design options.

Survey conducted as a follow up to Open House #3 asks community to provide feedback on designs and programming presented at the open house.

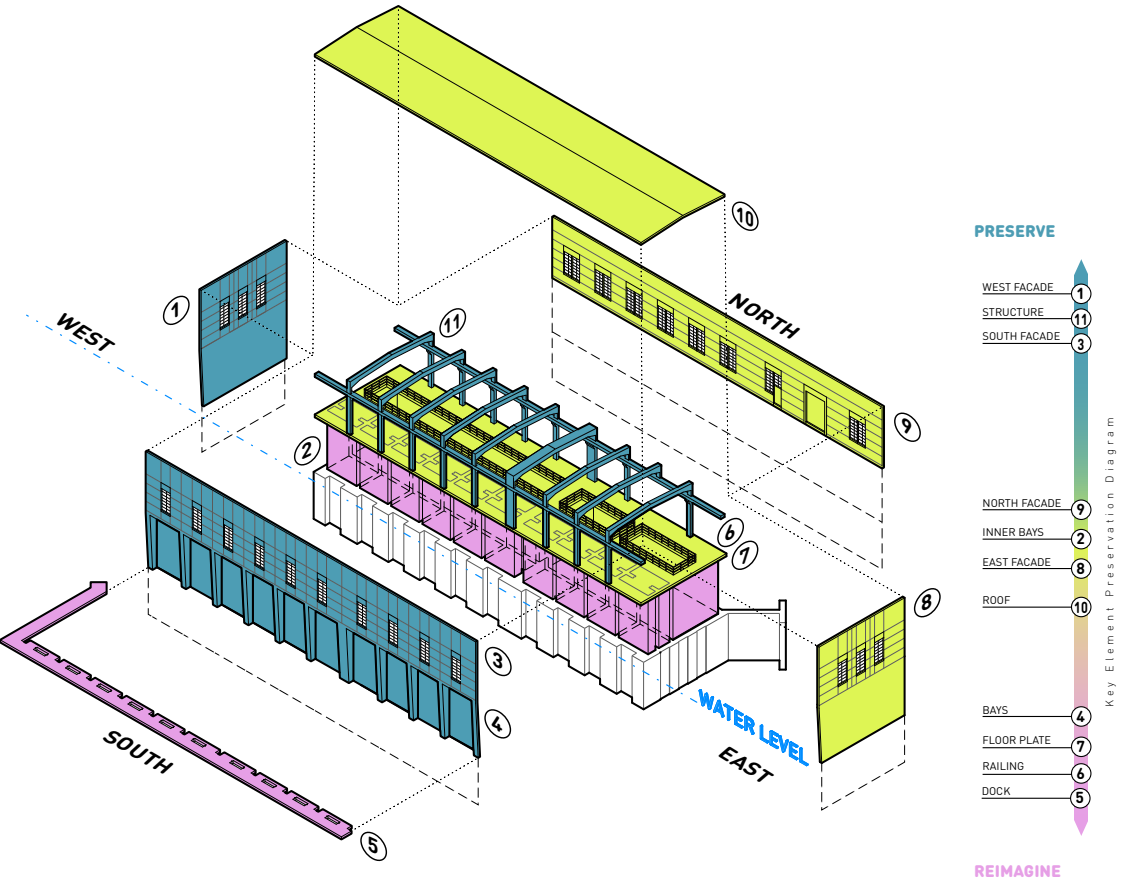


PRESERVATION

# Preservation Priorities



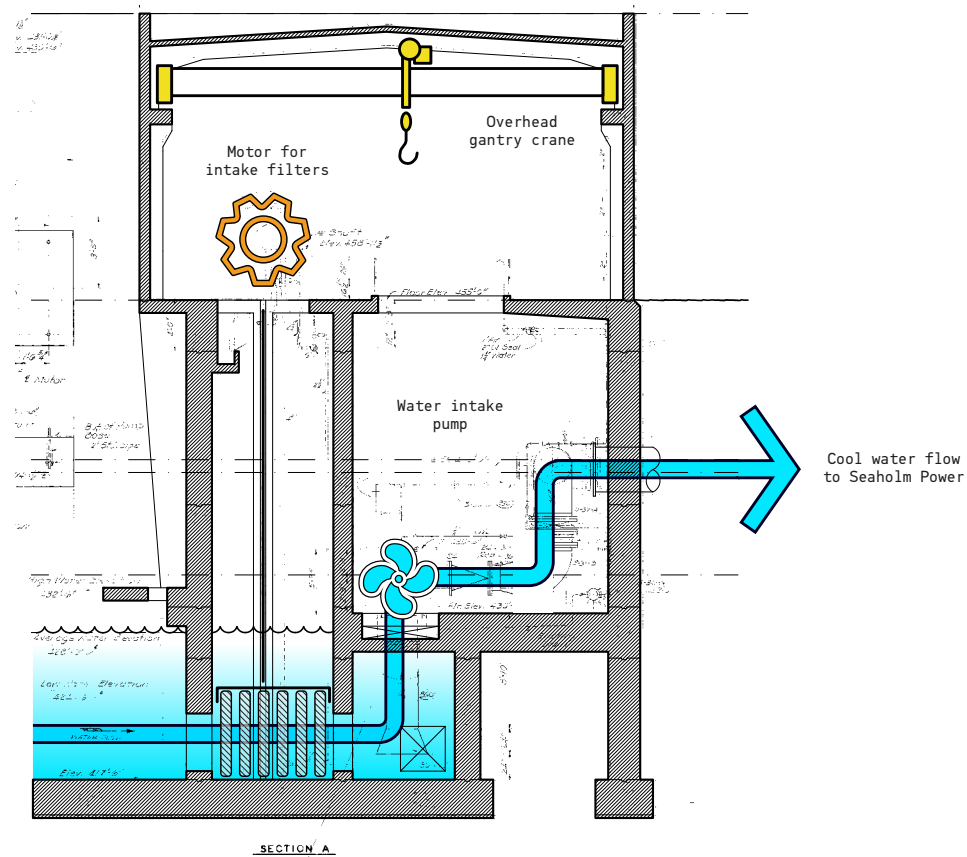
Seaholm Intake Building Section - Lady Bird Lake to Cesar Chavez



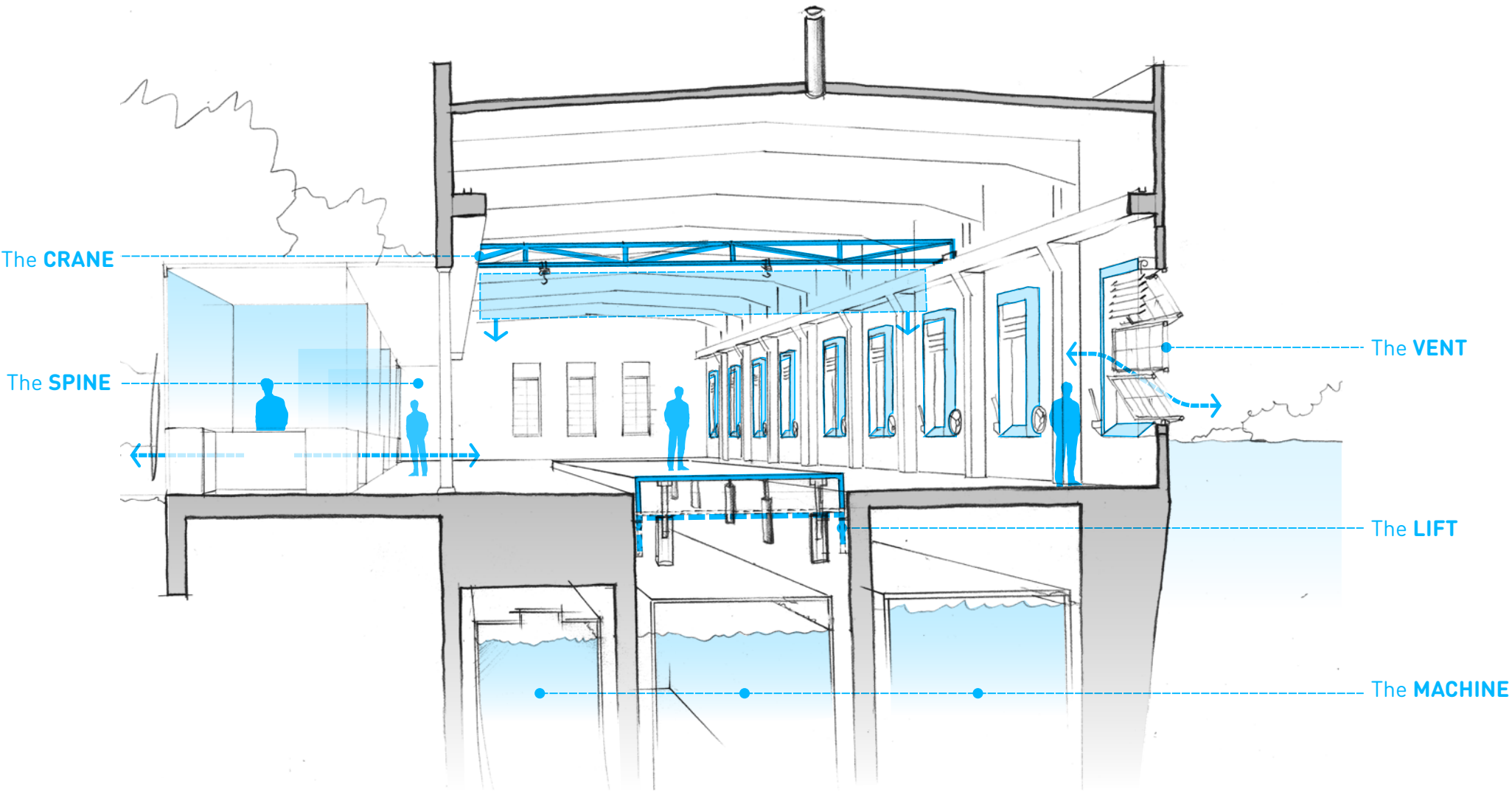


# Purpose and Possibility

The shell of the former Intake Building is highly adaptable. Its upper level is directly accessible from a flat, wide plateau off Cesar Chavez. The lower level is deep below the upper level at the water's edge and framed by thick concrete, offering a surprising opportunity to make the upper level comfortable year-round with a passive lake cooling system.



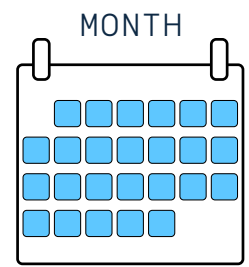
The purpose of the Intake Building was to bring in water to cool power turbines.



The possibility is to make a new machine with unique elements from the building's past.

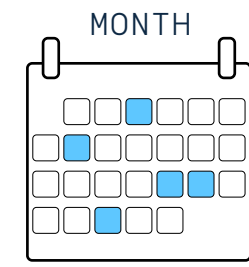
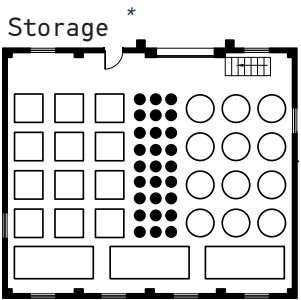
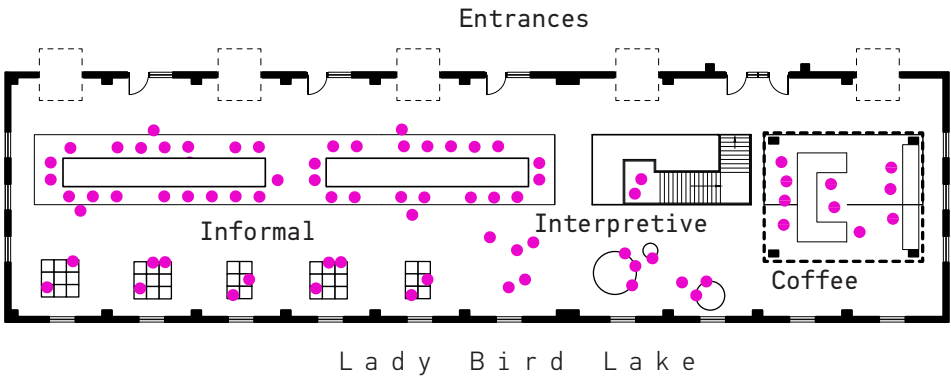


# Open and Flexible



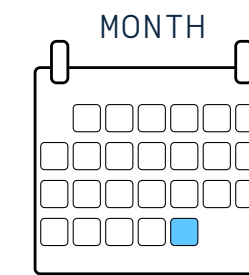
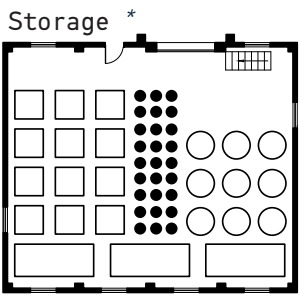
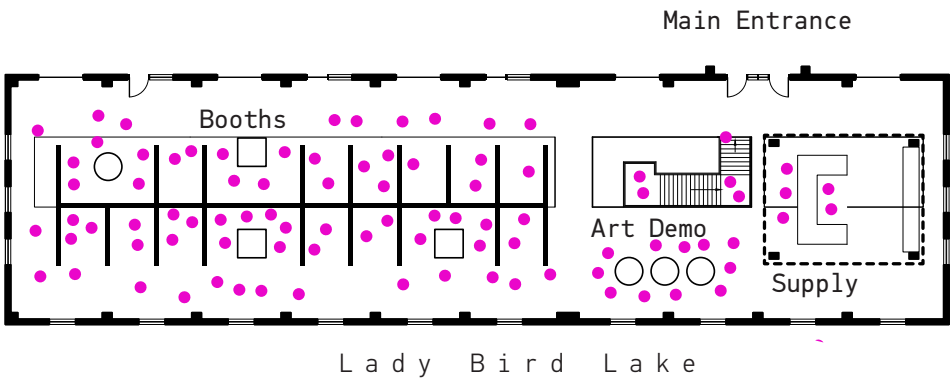
## ANY DAY

ANY DAY events could happen each day of the week. The building and site can be designed to make the space easy and flexible.



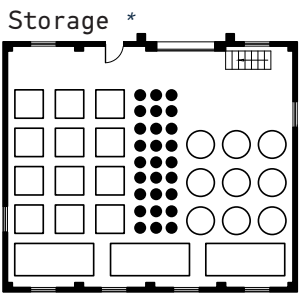
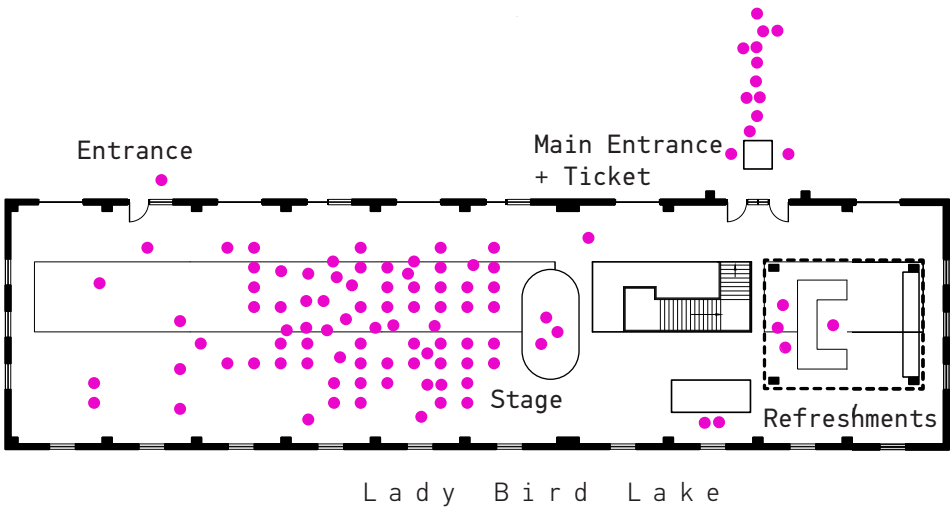
## NOW AND THEN

NOW AND THEN activities could take advantage of this new flexibility, allowing for periodic signature programs and events.

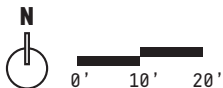


## ON OCCASION

ON OCCASION events would be less common but could take advantage of the building's ability to accommodate large gatherings.



\*Building B is not inhabitable due to overhead power lines.





## ANY DAY

The Intake Building will host meet ups and gatherings, with free WiFi and a place to grab a snack and a coffee.





## ANY DAY

The Intake Building will be open for people to come in and work individually or collectively. Unique elements from the building's past will be on display for people to experience.





**NOW AND THEN**

The Intake Building will be able to accommodate larger events simultaneously, such as an art fair and youth art camp.





## ON OCCASION

Large events can be held at the Intake Building, with support services located outside.

