

# Zilker Metro Park Maintenance Barn Replacement

Design Commission Project Review Submittal  
July 2018

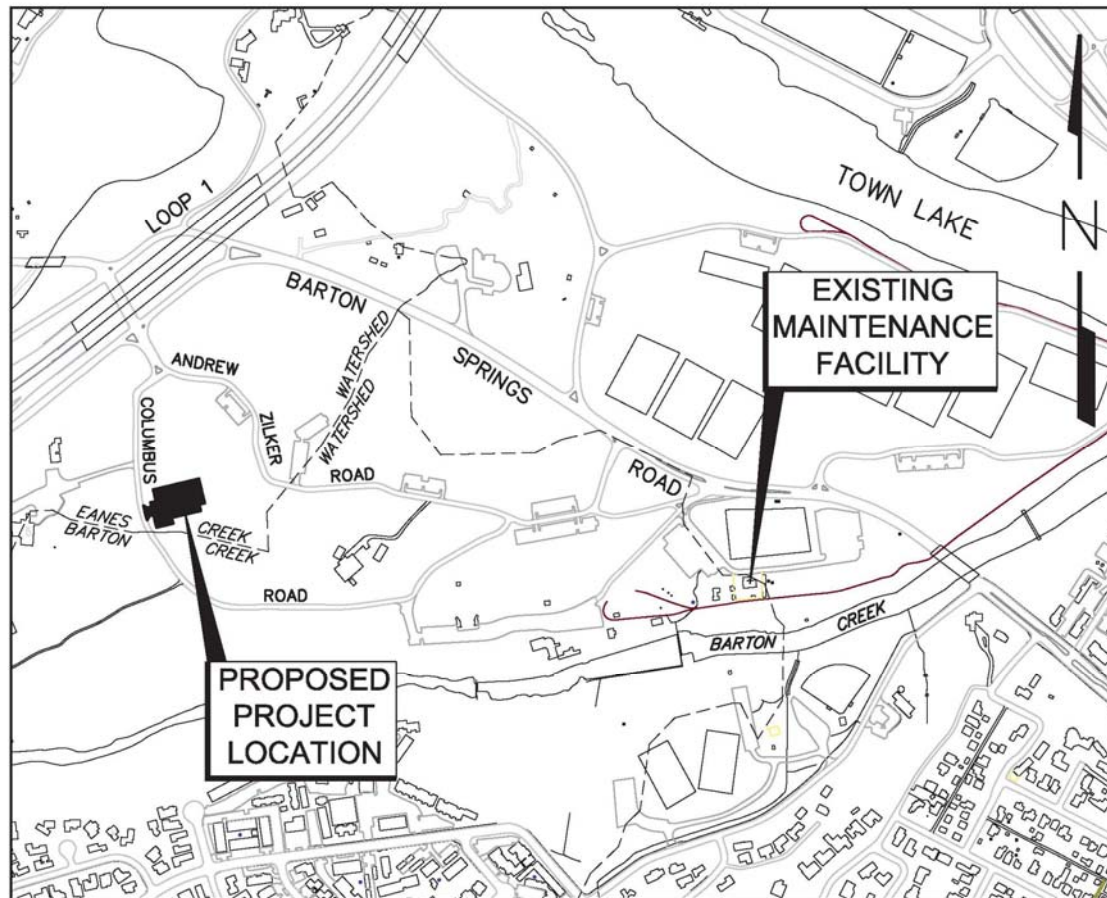


# Project Description

- The Parks and Recreation Department's (PARD) existing maintenance barn is undersized for Zilker Park maintenance staff's current needs. The barn is also located within the Barton Creek Watershed, very near Barton Springs Pool.
- The maintenance barn staff is responsible to maintain the entire Zilker Park including the pool, grounds and buildings.
- The new maintenance barn will be located within the Eanes Creek Watershed, in a less-trafficked area of Zilker Park and will consist of more office space, work space, and storage space.
- The building is expected to achieve LEED Silver.

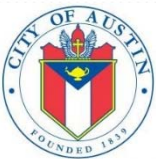
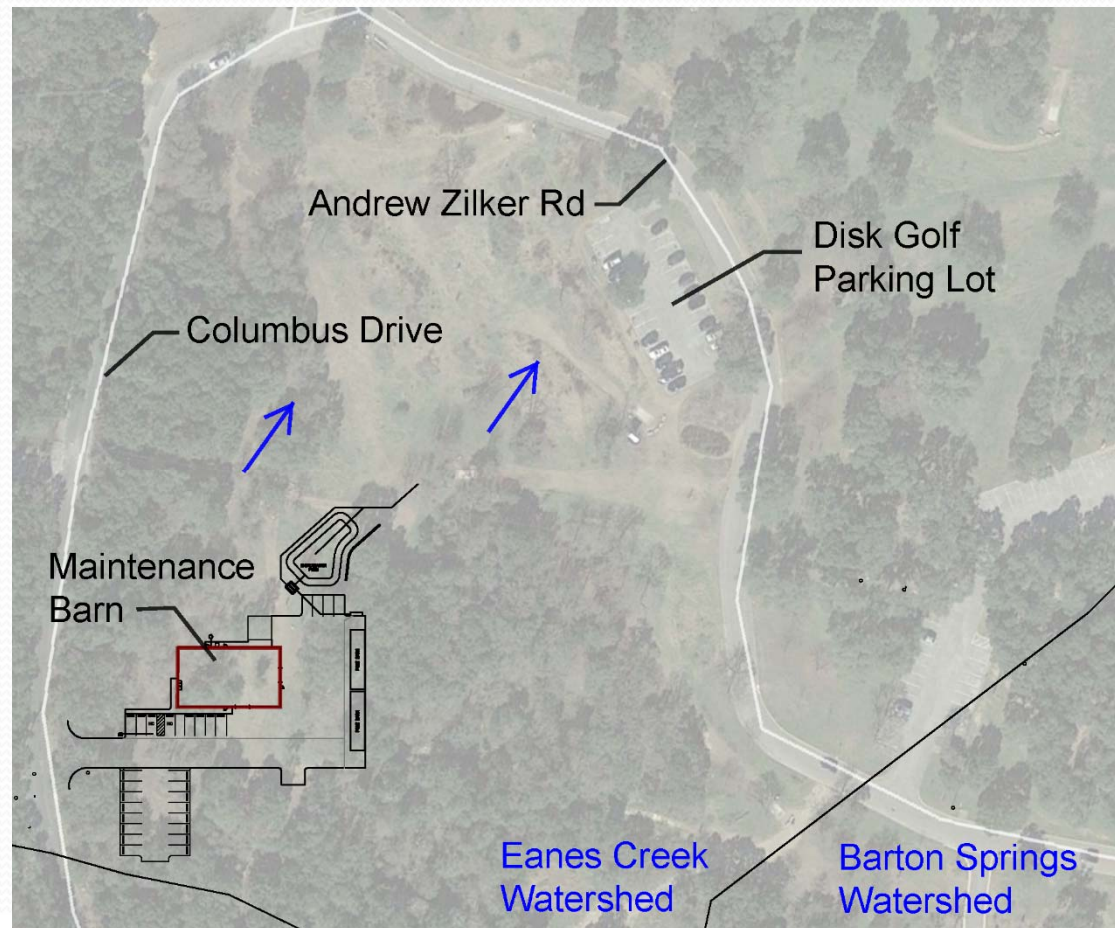


# Project Location



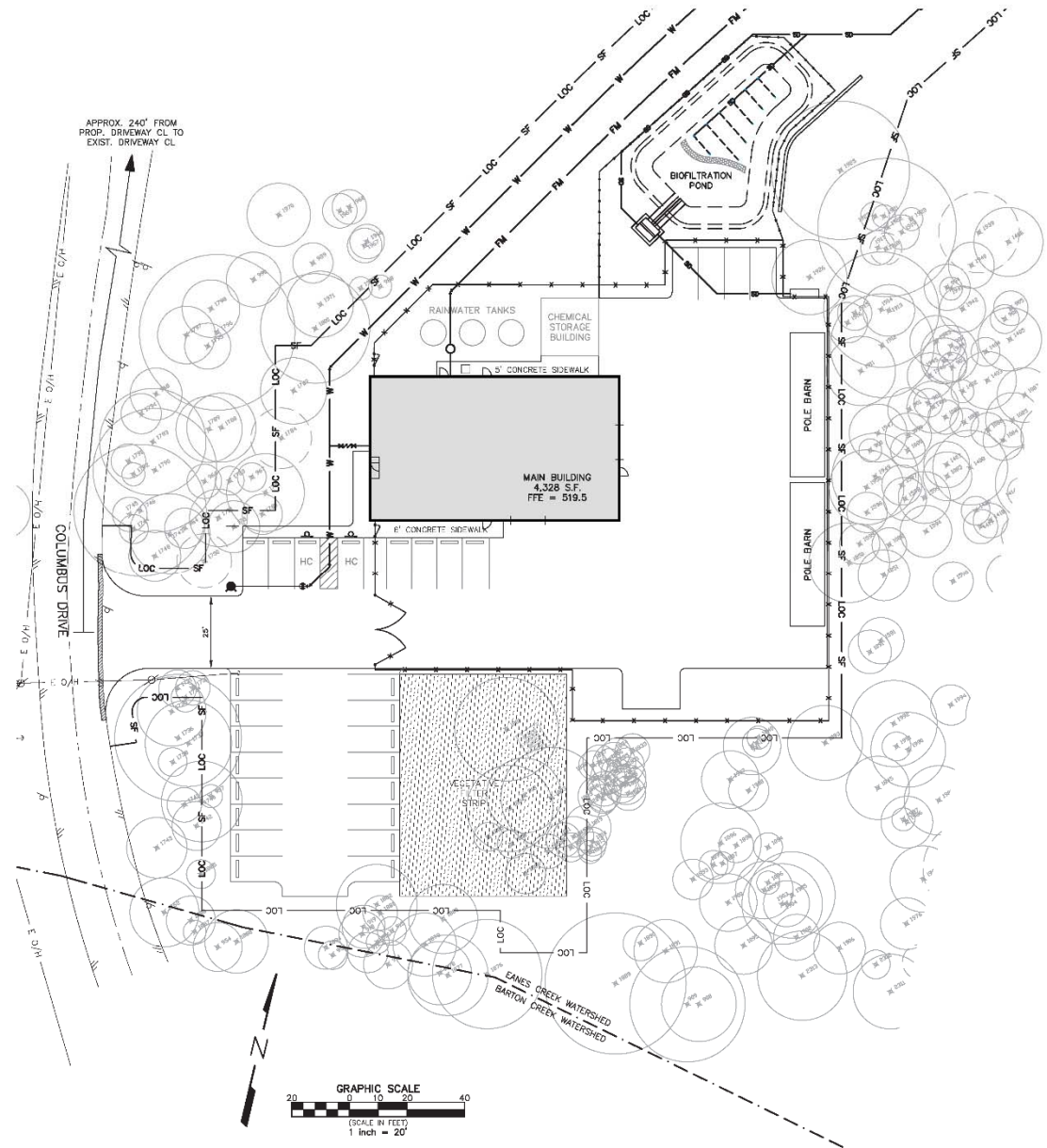


# Project Location with Aerial



# Site Plan

- 1,780 SF office space
- 2,548 SF maintenance bay
- 2 pole barns for storage
- Biofiltration pond for stormwater quality
- Parking for staff
- Vegetative Filter Strips
- Rainwater collection and solar power in progress

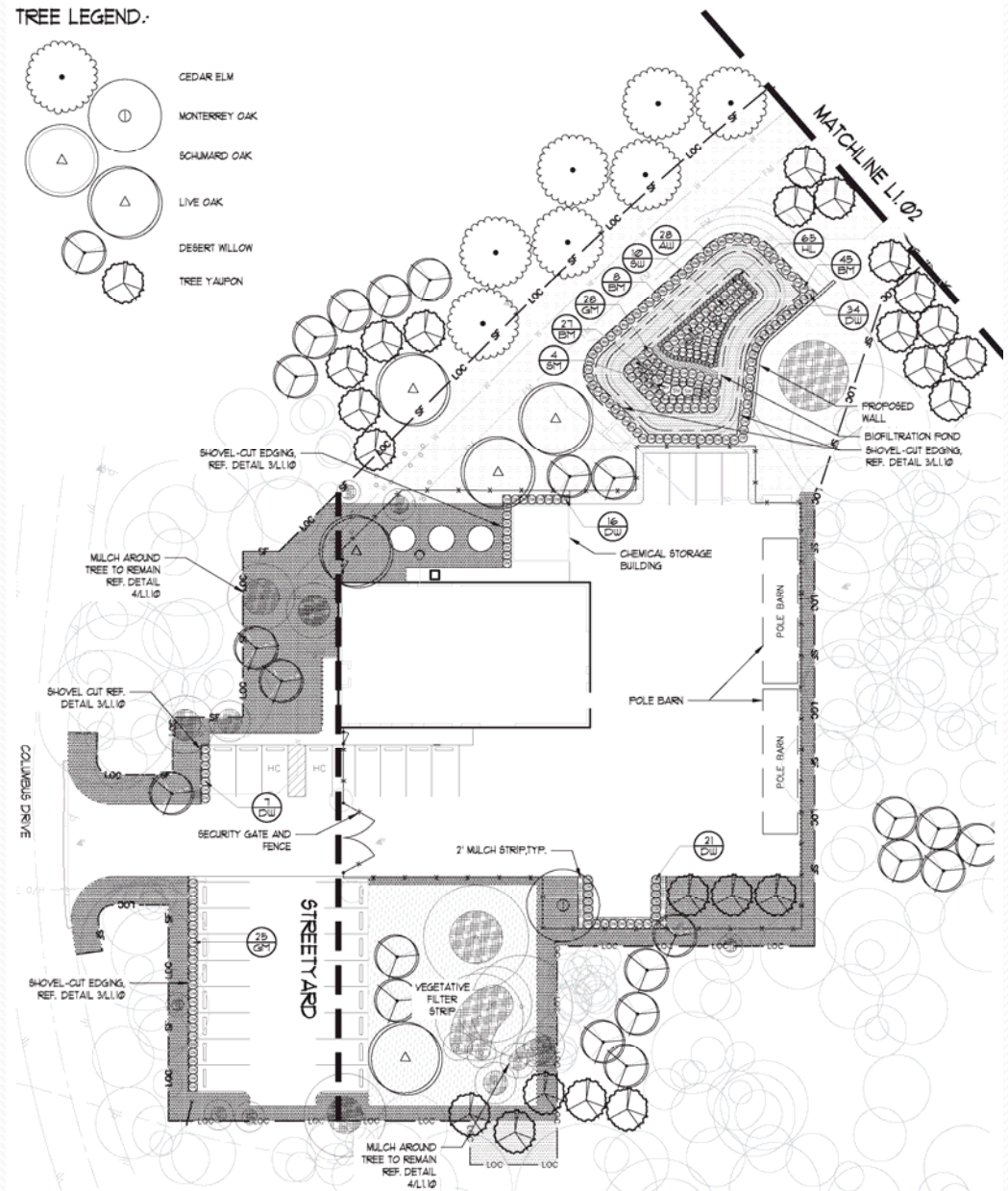




# Site Views

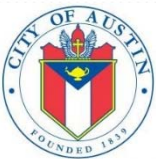


Trees removed to accommodate the construction of the facility will be replaced at rates indicated by the Environmental Criteria Manual. No heritage trees will be removed.

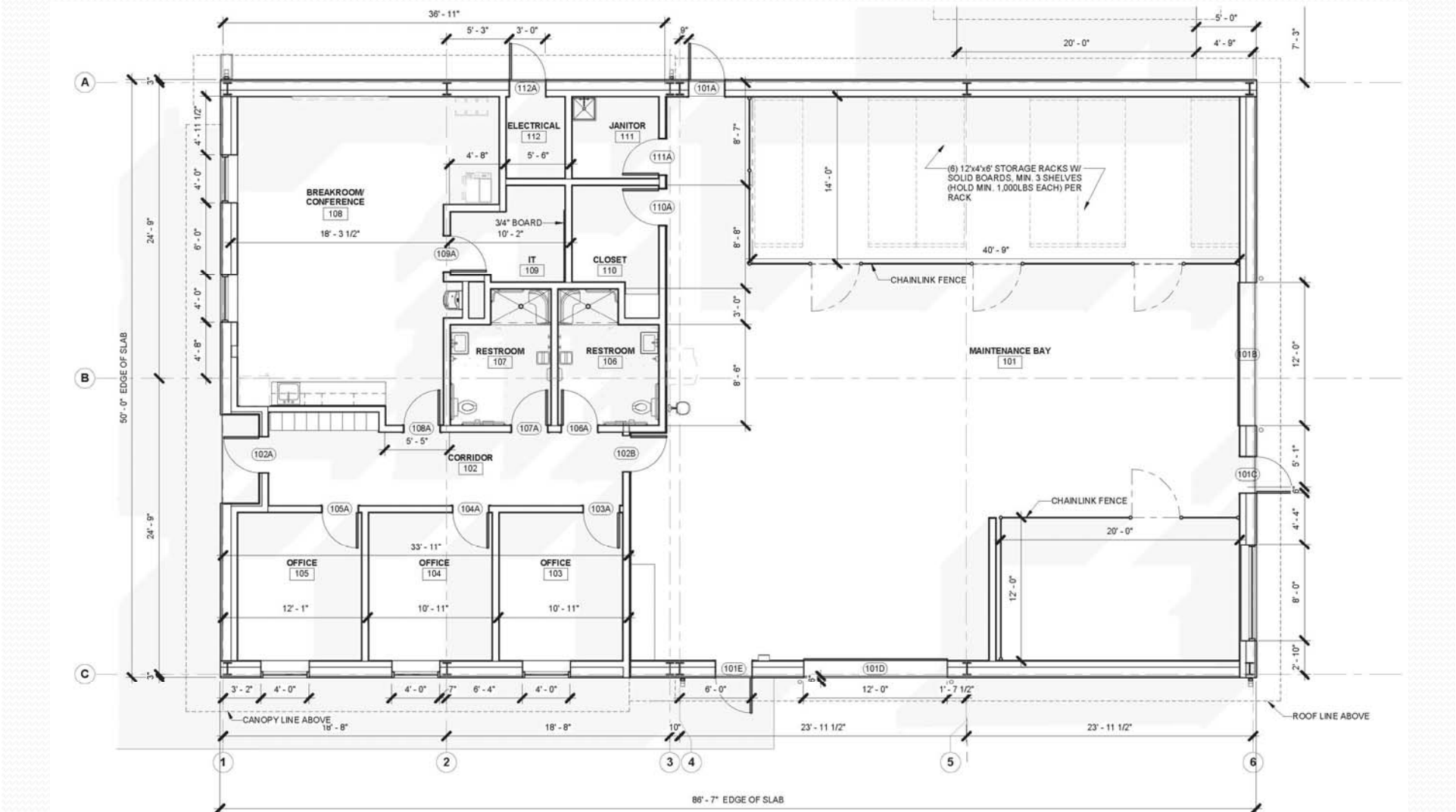




# Building Perspective View

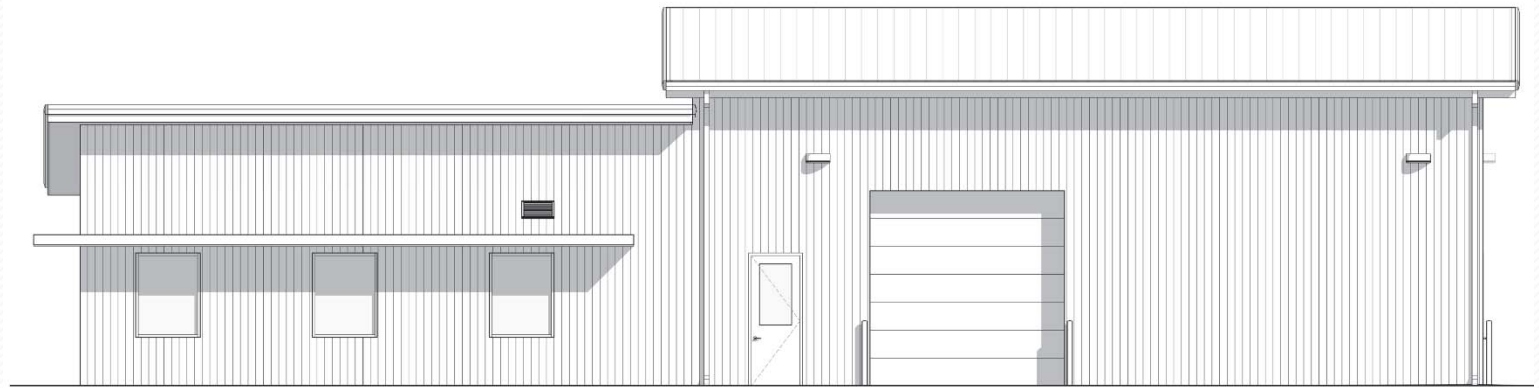




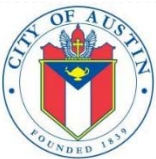
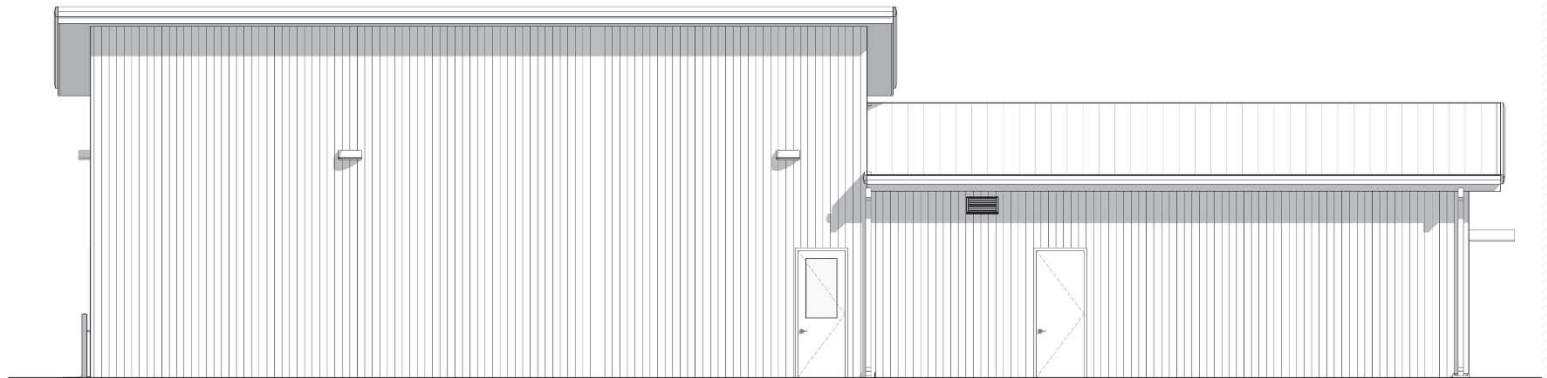


# Building Exterior Elevations

South  
View



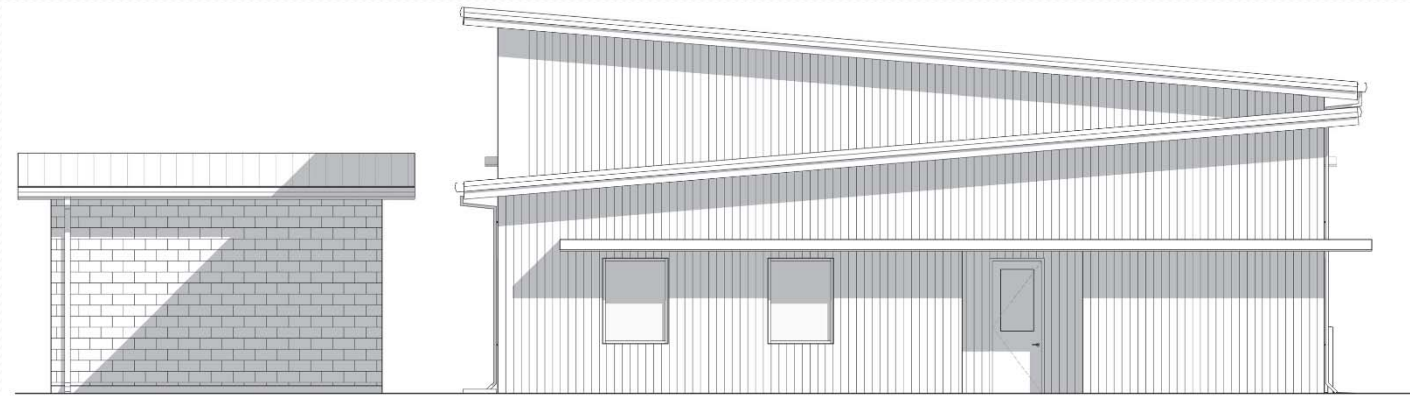
North  
View



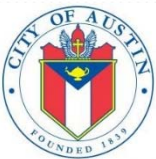
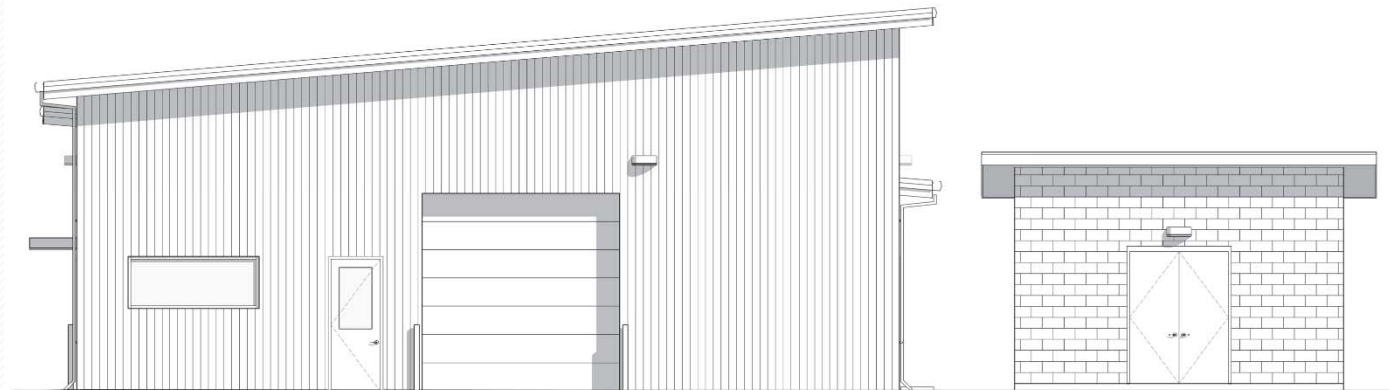


# Building Exterior Elevations

West View,  
front door



East View



# Sustainable Construction and Design

- Bicycle racks and showers for PARD staff
- Stormwater quality protected with biofiltration pond
- Electric vehicle charging station
- Native and non-invasive adapted, drought-tolerant landscaping
- High-reflectance roofing
- Using concrete as a Heat Island Reduction instead of asphalt
- Indoor and outdoor water use reduction
- Improved energy performance
- Recycling collection
- Occupant-controlled lighting
- Ample daylight in the office space
- During construction, use products with recycled content and regional sourcing
- FSC-certified wood
- Low-emitting materials, including paint, adhesives/sealants/coatings, and flooring systems
- Dark-sky compliant outdoor light fixtures
- 75% of construction waste to be recycled or salvaged

