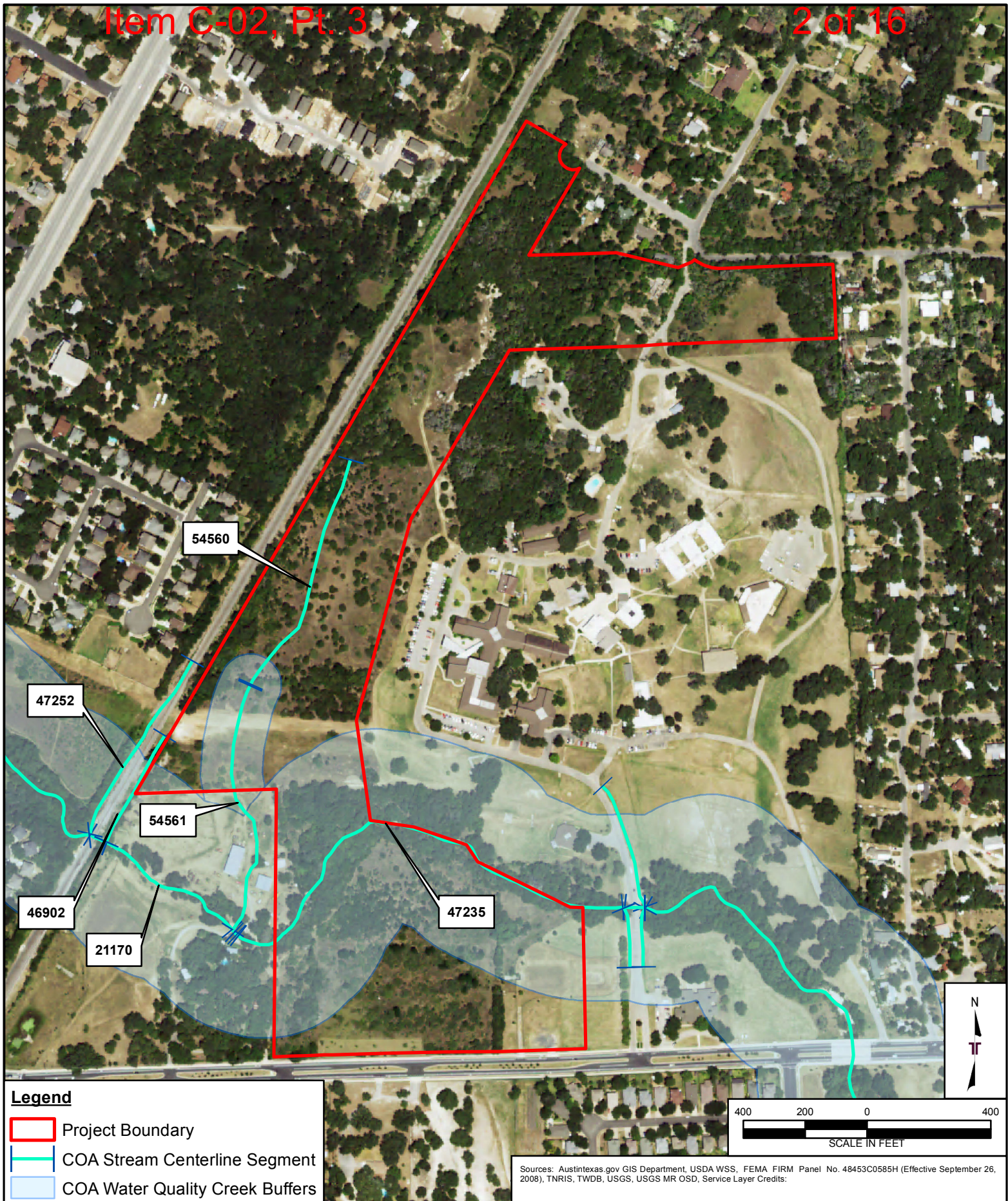


Project Mng:	JC	Project No:	96167629
Drawn By:	JC	Scale:	AS SHOWN
Checked By:	JC	File No.:	96167629
Approved By:	HJ	Date:	Aug 9, 2016

Terracon
Consulting Engineers & Scientists
5307 INDUSTRIAL OAKS BLVD. - #160 AUSTIN, TX 78735
PH. (512) 442-1122 FAX. (512) 442-1181

FEMA Floodplain Map
Approximately 40-Acre Tract West Dittmar Road Austin, Travis County, Texas

EXHIBIT
5



Project Mngn:	JC	Project No:	96167629
Drawn By:	JC	Scale:	AS SHOWN
Checked By:	JC	File No.:	96167629
Approved By:	HJ	Date:	Aug 9, 2016

Terracon
Consulting Engineers & Scientists
5307 INDUSTRIAL OAKS BLVD. - #160 AUSTIN, TX 78735
PH. (512) 442-1122 FAX. (512) 442-1181

Water Quality Zones
Approximately 40-Acre Tract
West Dittmar Road
Austin, Travis County, Texas

EXHIBIT
6

**APPENDIX C
SITE PHOTOGRAPHS**



Photo 1 View of the north portion of the site.



Photo 2 View of the south portion of the site.



Photo 3 View of the east portion of the site.



Photo 4 View of the west portion of the site.



Photo 5 View of R-1.



Photo 6 View of upland excavated pond.



Photo 7 View of the detention pond.



Photo 8 View of the drainage swale.

**APPENDIX D
CREDENTIALS**

JARED COBB

STAFF SCIENTIST

PROFESSIONAL EXPERIENCE

Mr. Cobb is a Staff Scientist working in the Environmental Department of Terracon's Austin, Texas office. Mr. Cobb has three years of experience as an environmental consultant regarding natural and cultural resources and ArcGIS spatial data.

Mr. Cobb completed two internships with Terracon before joining the firm full time. The first internship was comprised of working in the construction materials testing laboratory. The second internship was with the Natural Resources division. He assisted the Natural Resources team with wetland determinations and environmental assessments. Mr. Cobb is proficient in GIS and other tools used in wetland determinations.

He is also knowledgeable in writing technical reports pursuant to City of Austin Environmental Resources Inventory (ERI) Regulations, National Environmental Protection Act (NEPA), the Clean Water Act and the Rivers and Harbors Act, Environmental Assessments (EA), Categorical Exclusions (CE), Environmental Site Assessments (ESA), Storm Water Pollution Prevention Plans (SWPPP), Wetland Mitigation Plans and U.S. Army Corps of Engineers (USACE) Section 404 Permits.

Mr. Cobb has provided services to private industry and public sector clients both locally and throughout the nation.

PROJECT EXPERIENCE

MX3 Homes – Austin, Texas

Performed and wrote a City of Austin Environmental Resources Investigation. Assessed 12 tracts of land (approximately 6 acres) for critical environmental features, including wetlands, rimrock, bluffs, recharge features, seeps and springs to assist client in feasibility of proposed residential development.

Austin Achieve Charter School – Austin, Texas

Performed and wrote a City of Austin Environmental Resources Investigation. Assessed approximately 25 acres for critical environmental features, including wetlands, rimrock, bluffs, recharge features, seeps and

Cypress Creek Renewables, LLC - Texas and North Carolina

Performed Waters of the U.S. (WOUS) delineations and determinations for proposed solar farm sites around Texas and North Carolina. Assisted writing and submitting Jurisdictional Determination (JD) packages to various USACE Districts including Fort Worth, Galveston, Tulsa, and Wilmington. Coordinated with USACE in obtaining final determinations.

Montgomery County Community Development (Neighborhood Development) – Willis, Texas

Prepared an Environmental Assessment (EA) document pursuant to the NEPA required by the U.S. Department of Housing and Urban Development (HUD) and Texas Department of Housing and Community Affairs (TDHCA) for a proposed housing and community development and

Education

Bachelor of Science, Agriculture, 2011, Texas A&M University

Wetland Delineation Training Class – Richard Chinn Environmental Training, Inc.

Geographic Information Systems Associate of Applied Science, Current, Lone Star College

Associates of Science, 2009, Lone Star College

Certification

U.S. Army Corps of Engineers Wetland Delineation Manual Program Training

Affiliations

Real Estate Council of Austin (RECA)

Young Professionals in Transportation (YPT) Austin Chapter

Society of American Military Engineers (SAME), 2013-2014 Environment Committee; Young Members (YM) Group; Wetlands Workshop Chair

North Houston Association (NHA) – Environment Committee

Texas Association of Environmental Professionals (TAEP) Young Environmental Professionals (YEP)

Work History

Terracon, Staff Scientist, September 2013-Present

Terracon, Field Scientist, June 2012-September 2013

Terracon, Summer Internship, May 2011 - August 2011

Texas A&M University, Student Farmer, February 2011 – May 2012

performed site visit and GIS map-making and analysis.

West Independent School District – West, Texas

Explosion. Assisted with writing and creating FEMA EA documents and exhibits. Also assisted with USFWS consultation on threatened and endangered species and their habitat.

Advanced Services, Inc. (Austin-Bergstrom International Airport) – Austin, Texas

Assisted in writing an EA and wrote corresponding NEPA document for a proposed Fixed Base Operator Facility as part of an airport expansion project at the Austin-Bergstrom International Airport (ABIA) pursuant to Federal Aviation Administration (FAA) compliance requirements; performed site visit including a Threatened and Endangered Species/Migratory Bird Species Habitat Assessment and GIS map-making and analysis; published a public notice of the proposed project; concluded with a Finding of No Significant Impact.

Lone Star Circle of Care – Bastrop, Texas

Wrote an environmental assessment document pursuant to the National Environmental Policy Act (NEPA) required by the Health Resources and Services Administration (HRSA) for a proposed community health center and performed site visit and GIS map-making and analysis.

Montgomery County Community Development (Health Center) – Conroe, Texas

Wrote an environmental assessment document pursuant to NEPA required by the HUD and TDHCA for a proposed community health center and performed site visit and GIS map-making and analysis.

Leander Fire Department – Leander, Texas

Prepared a Phase I Environmental Site Assessment (ESA) on approximately 2.5 acres of undeveloped land. Performed field reconnaissance, site owner interview and historic data research to identify Recognized Environmental Conditions for a proposed Fire Station.

The Urban Companies – Houston, Texas

Prepared a Phase I Environmental Site Assessment (ESA) on approximately 4.6 acres of undeveloped land. Performed field reconnaissance, site owner interview and historic data research to identify Recognized Environmental Conditions.

EDUCATIONAL EXPERIENCE**Horticulture Bachelors of Science – Texas A&M University**

Program focused on horticulture and engineered landscaping. Coursework included Plant Identification, Plant Physiology, Entomology, Plant Pathology, Soil Science, Genetics, Physics, Organic Chemistry, and Chemistry. Field experience in the Brazos County focused on sustainable farming and maintaining botanical gardens.

Wetland Delineation Training Class – Richard Chinn Environmental Training, Inc.

Focused on the three criteria of wetlands. Program concentrated on the 1987 COE Wetlands Delineation Manual and the Atlantic Gulf Coastal Plain Regional Supplement with both classroom and field components.

Associate of Applied Science – Lone Star College

Degree focusing on general Biology, Chemistry, Physics and Computer Sciences with classes in math and English.

ADDITIONAL SKILLS

Experience with ArcGIS 2010, USACE Galveston Wetland Functional Assessments, USACE Galveston Stream Functional Assessments, COA FAFH tool, and Microsoft Office

APPENDIX E
GENERAL COMMENTS

The City of Austin (COA) Environmental Resource Inventory (ERI) was performed in accordance with generally accepted scientific and engineering evaluation practices of this profession undertaken in similar studies at the same time and in the same geographical area. The limitations of this ERI should be recognized.

In conducting the limited scope of services described herein, certain sources of information and public records were not reviewed. The scope of this ERI was conducted in general accordance with the City of Austin's Land Development Code (LDC), Section 25-8-121 (A), and the City of Austin Title 30-5. The service's scope is not intended to be compliant or consistent with the State of Texas Edwards Aquifer Rule (30 TAC 213, Subchapter B; pertaining to Travis County, Texas) or the Texas Commission on Environmental Quality (TCEQ) Edwards Aquifer Protection Program. Field identification of Critical Environmental Features (CEFs) as defined by the COA can be seasonally influenced. Due to seasonal changes, Terracon cannot guarantee areas to exhibit or not to exhibit CEF characteristics at all times of the year.

CEF wetlands were evaluated using the USACE 1987 Manual and Great Plains Regional Supplement. The manuals provide assistance for identifying wetlands based on the three criteria discussed. However, the manuals alone may not have provided enough information to document whether or not the three criteria were met. Various physical properties or other visual signs used to evaluate whether the three wetland identification criteria areas were satisfied may not be straightforward, especially in disturbed or problem areas. The manuals also allow the user to visually estimate certain indicators, such as the percentage of area covered by dominant species for the entire community. Terracon did not attempt to identify every plant species and did not classify soil types by laboratory methods.

This report is for the exclusive use of the client and any relying government entities for the project being discussed. No warranties, either expressed or implied, are intended or made.

Applicant Photographs





