

Rental Housing Development Assistance Program

Updating the Application and Scoring Guidelines

Housing and Planning Committee

August 14, 2018

Neighborhood Housing and Community Development Department

RHDA Program

18 years

3300
Units

< 50%
MFI

RHDA Funded 9% LIHTC – 2018

< 30% MFI =
46 Units

< 50% MFI =
176 Units

27 Housing
First Units

13 PSH (Non-
Housing First)
Units

32 Family-
Friendly Units

RHDA Funds
= \$6.7M

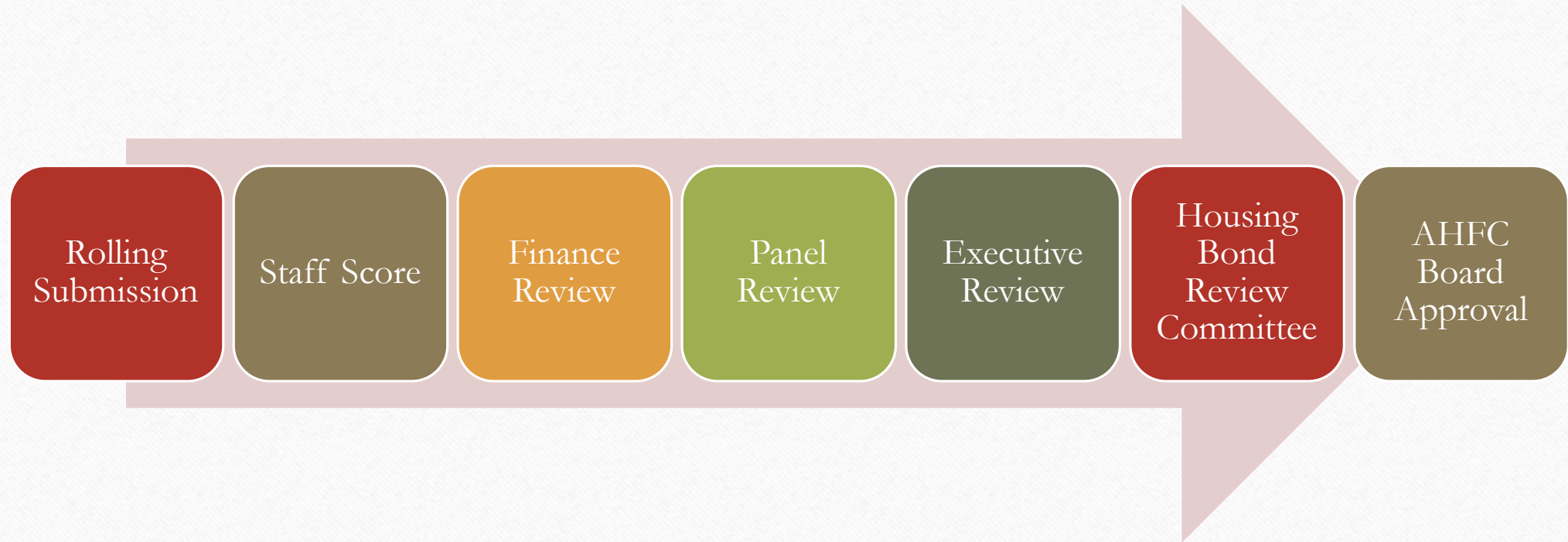
RHDA Scoring (Current)

2011 Update

Multiple Priorities

Unclear/Outdated
Metrics

RHDA Process (Current)



2018 Update

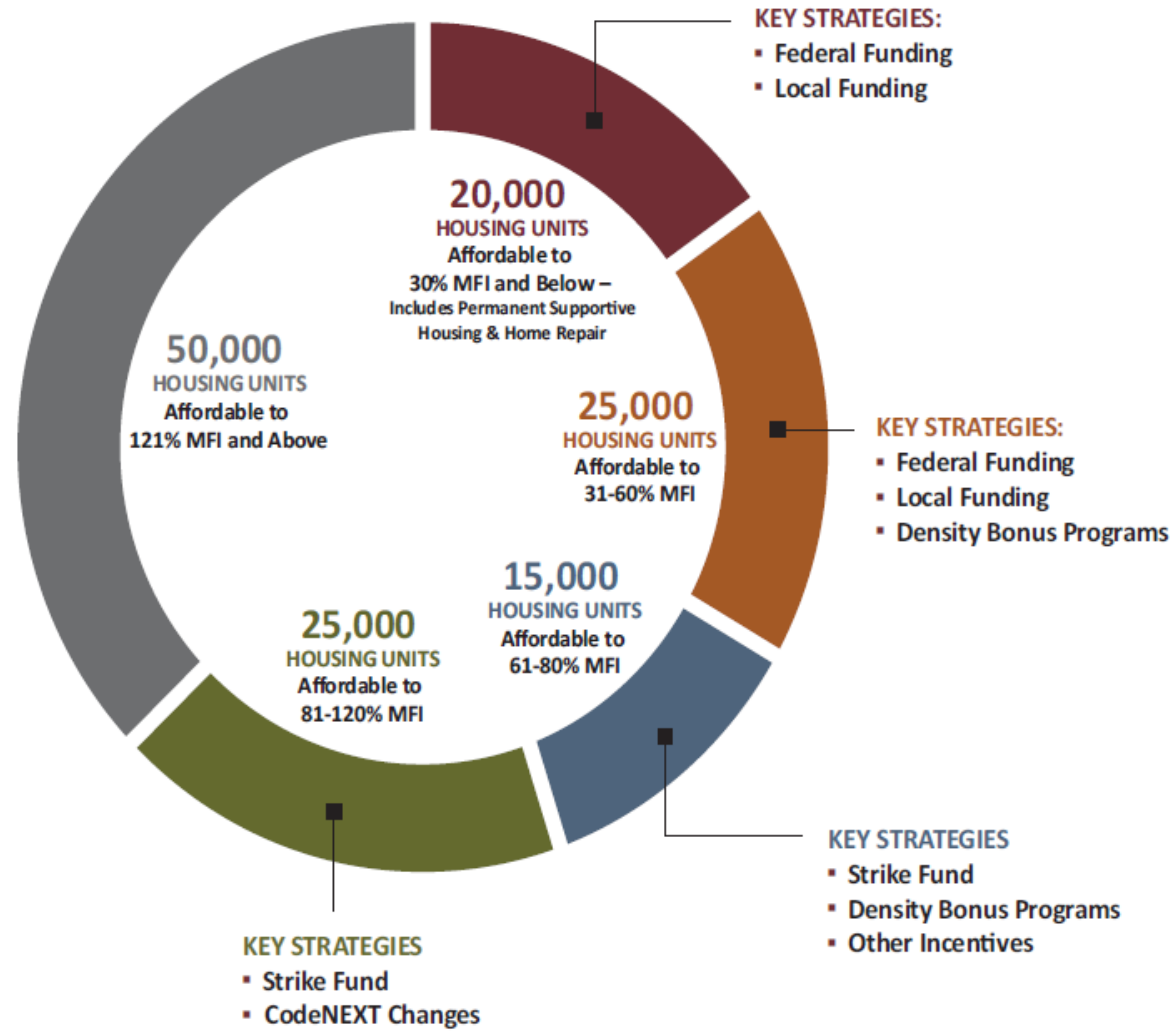
Strategic
Housing
Blueprint

Austin
Strategic
Direction 2023

Technology

Clarity

Ease of
Access



Geographic Priorities

Imagine
Austin

High
Opportunity
Areas

High-
Frequency
Transit

Geographic
Distribution

Priorities and Initiatives

Accessibility

Family-
Friendly

Permanent
Supportive
Housing

RHDA Scoring (Proposed)

Units

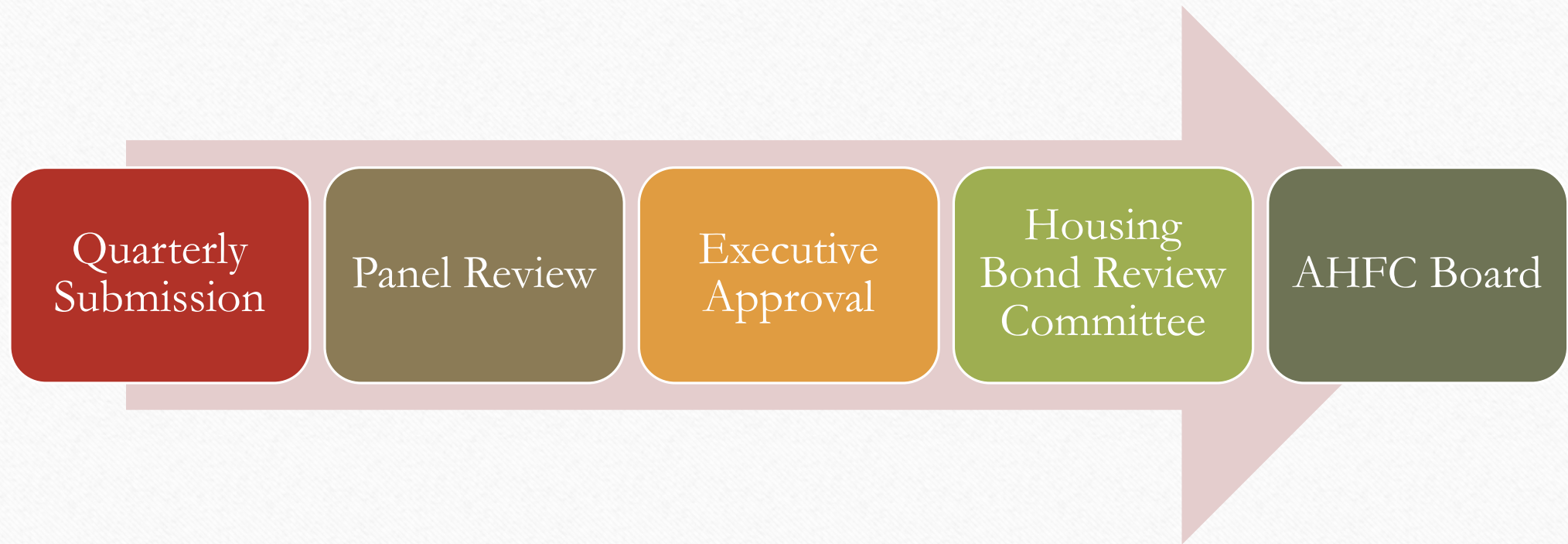
Geography

Priorities

Underwriting

Qualitative

RHDA Process (Proposed)



Process Comparison



Next Steps

Internal
Verification

Stakeholder
Review

New
Application –
10/2018

Quarterly
Deadline Begins
12/2018