



July 24/2018.



Austin Strategic Mobility Plan Status Update

HISPANIC/LATINO QUALITY OF LIFE COMMISSION
JULY 24, 2018



Austin's population is expected to almost **DOUBLE** over the next 30 years.


Given this growth, even maintaining current levels of traffic congestion will require significant shifts in how we get around, utilizing all modes of transportation such as driving, walking, bicycling, and using public transit.

How will we get around in the future?

What is the Austin Strategic Mobility Plan?

The ASMP is the City's new transportation plan, covering all the ways we get around Austin. It will:

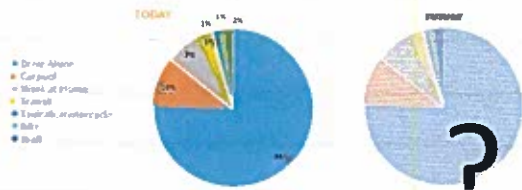
- Guide our transportation policies, programs, projects, and investments
- Have a 20+ year horizon
- Be adopted by City Council, amending Imagine Austin



ASMP

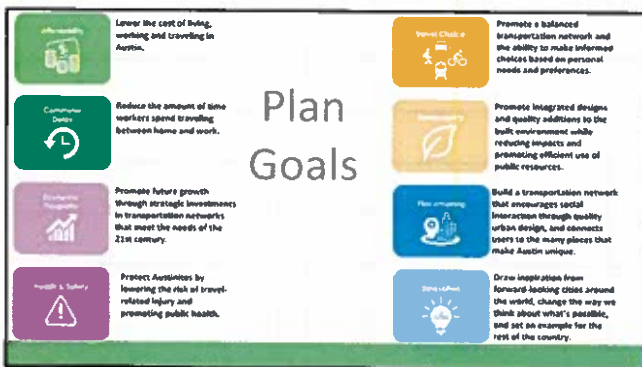
POLICIES PROGRAMS PROJECTS ACTION ITEMS

Motivation behind the Plan



What do we get in exchange for more diversified mode-share

Plan Goals



Where are we now?




Targeted Engagement

Youth
(24 and younger)

Seniors
(65 and older)

People of Color

People with Mobility Impairments



What did we hear?

Top Strategies	Plan Goal	Times Selected
Provide more public transit service and enhance connections to/from public transit	Travel Choice	224
Offer more choices in how we travel to reduce personal costs associated with car ownership	Affordability	221
Prioritize travel choices, such as taking public transit, walking, or bicycling, making them more convenient and efficient	Commuter Delay	206
Promote transportation modes that reduce reliance on fossil fuels (such as bicycling, walking, transit and electric vehicles)	Sustainability	203

What did we hear?

"More Transit"

"More Multimodal"

"More Street Capacity"

"More Balanced"

"More Bicycling"

"More Sidewalks"

Next Steps

- Currently developing the ASMP's Policies, Programs, Projects and Actions based on public feedback and technical analysis
- Reveal to public this fall for further feedback
- Return to Boards and Commissions in Winter
- Send to Council for adoption in early 2019

10

We'd like your help

- We are trying to work with more organizations that are composed of, represent, and serve Hispanic/Latino community members
- ATD is currently working on building relationships with Hispanic/Latino groups, but doesn't want to miss these voices in the meantime
- We had fewer survey respondents in heavily Hispanic/Latino Districts (2 & 4)

11

Questions?

12