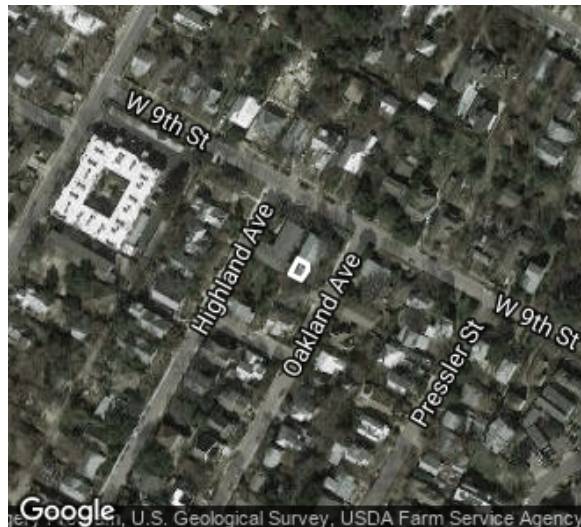


1501 W 9TH ST



Date recorded: Oct 2017

Image ID: 7875

Coordinates: 30.2766482, -97.7596841

IDENTIFICATION

| | |
|----------------------|---|
| CAD Parcel ID | 106709 |
| Legal description | LOT 1 BLK C OLT 3 DIV Z TERRACE PARK |
| Acreage | 0.2066 |
| Building name | None |
| Identification notes | None |

INTEGRITY

| | |
|-----------------|--------------|
| Alterations | None visible |
| Additions | None visible |
| Integrity notes | None |

HISTORY

| | |
|---------------|------|
| History notes | None |
|---------------|------|

CLASSIFICATION

| | |
|-----------------------|---------------------------------|
| Current use | Residential |
| Original use | Residential |
| Year built | 1970 |
| Source for year built | TCAD |
| Type | Back house |
| Form | One-room |
| Stylistic influences | No stylistic influences visible |

PRIOR DOCUMENTATION

| | |
|--------------------|---|
| Prior designations | Non-contributing to West Line National Register Historic District |
|--------------------|---|

LOCAL RECOMMENDATIONS

| | |
|--------------------------------|---|
| Recommended local designations | Recommended non-contributing to a local historic district |
| Local recommendation notes | None |

DESCRIPTION

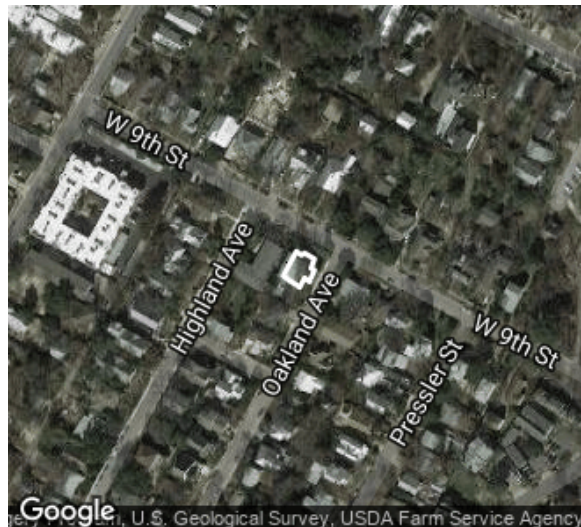
| | |
|-------------------------|-------------|
| Stories | 1 |
| Roof form | Side-gabled |
| Exterior wall materials | Wood |

1501 W 9TH ST



Oct 2017

1501 W 9TH ST



Date recorded: Oct 2017

Image ID: 7873

Coordinates: 30.2767503, -97.7595561

IDENTIFICATION

| | |
|----------------------|---|
| CAD Parcel ID | 106709 |
| Legal description | LOT 1 BLK C OLT 3 DIV Z TERRACE PARK |
| Acreage | 0.2066 |
| Building name | None |
| Identification notes | None |

CLASSIFICATION

| | |
|-----------------------|---|
| Current use | Residential |
| Original use | Residential |
| Year built | 1910 |
| Source for year built | West Line National Register Historic District nomination |
| Type | Single-family house |
| Form | Massed plan |
| Stylistic influences | Classical Revival |

DESCRIPTION

| | |
|-------------------------|--------------|
| Stories | 2 |
| Roof form | Front-gabled |
| Exterior wall materials | Wood |

INTEGRITY

| | |
|-----------------|---|
| Alterations | Porch altered, Fenestration pattern altered, windows replaced, converted to apartments |
| Additions | Rear addition |
| Integrity notes | None |

HISTORY

| | |
|---------------|------|
| History notes | None |
|---------------|------|

PRIOR DOCUMENTATION

| | |
|--------------------|--|
| Prior designations | Non-contributing to a NRHP district |
|--------------------|--|

LOCAL RECOMMENDATIONS

| | |
|--------------------------------|--|
| Recommended local designations | Recommended non-contributing to a local historic district |
| Local recommendation notes | None |

1501 W 9TH ST



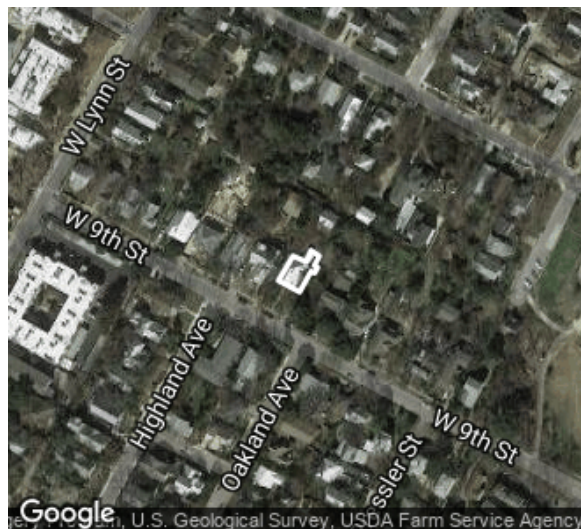
Oct 2017

1501 W 9TH ST



Oct 2017

1502 W 9TH ST



Date recorded: Oct 2017

Image ID: 8094

Coordinates: 30.2772443, -97.7593189

IDENTIFICATION

| | |
|----------------------|-------------------------------|
| CAD Parcel ID | 109272 |
| Legal description | LOT 10 OLT 4 DIV Z WENDLANDTS |
| Acreage | 0.3005 |
| Building name | Mary Nelson House |
| Identification notes | None |

INTEGRITY

| | |
|-----------------|---|
| Alterations | Exterior wall materials replaced, Porch altered |
| Additions | Rear addition |
| Integrity notes | None |

HISTORY

| | |
|---------------|------|
| History notes | None |
|---------------|------|

CLASSIFICATION

| | |
|-----------------------|--|
| Current use | Residential |
| Original use | Residential |
| Year built | 1915 |
| Source for year built | West Line National Register Historic District nomination |
| Type | Single-family house |
| Form | Bungalow |
| Stylistic influences | Craftsman |

PRIOR DOCUMENTATION

| | |
|--------------------|---|
| Prior designations | Local landmark, Contributing to a NRHP district |
|--------------------|---|

LOCAL RECOMMENDATIONS

| | |
|--------------------------------|---|
| Recommended local designations | Recommended contributing to a local historic district |
| Local recommendation notes | None |

DESCRIPTION

| | |
|-------------------------|--------------|
| Stories | 2 |
| Roof form | Front-gabled |
| Exterior wall materials | Stucco |

1502 W 9TH ST



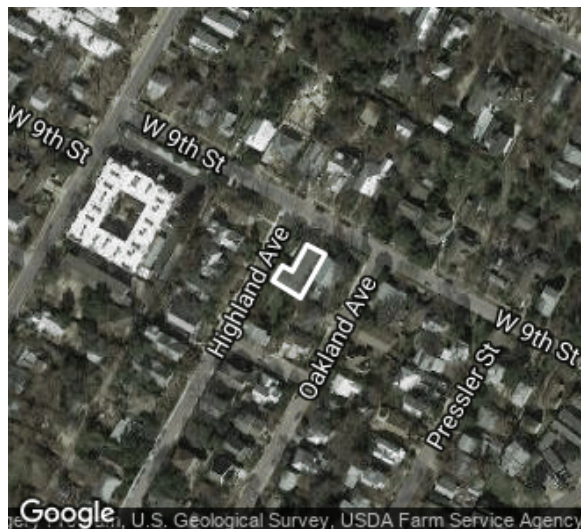
Oct 2017

1502 W 9TH ST



Oct 2017

1503 W 9TH ST



Date recorded: Oct 2017

Image ID: 8045

Coordinates: 30.2767601, -97.7597794

IDENTIFICATION

| | |
|----------------------|---|
| CAD Parcel ID | 759538 |
| Legal description | TERRACE 9 CONDOMINIUMS AMENDED PLUS 8.3333 % INT IN COM AREA |
| Acreage | 0.0172 |
| Building name | None |
| Identification notes | Condo units, TCAD ID 759539 through 759550 |

CLASSIFICATION

| | |
|-----------------------|---------------------------------|
| Current use | Residential |
| Original use | Residential |
| Year built | 1966 |
| Source for year built | Building permit |
| Type | Low-rise apartment building |
| Form | Massed plan |
| Stylistic influences | No stylistic influences visible |

DESCRIPTION

| | |
|-------------------------|-------------|
| Stories | 2 |
| Roof form | Hipped |
| Exterior wall materials | Brick, Wood |

INTEGRITY

| | |
|-----------------|-------------------------|
| Alterations | Windows likely replaced |
| Additions | None visible |
| Integrity notes | None |

HISTORY

| | |
|---------------|------|
| History notes | None |
|---------------|------|

PRIOR DOCUMENTATION

| | |
|--------------------|---|
| Prior designations | Non-contributing to West Line National Register Historic District |
|--------------------|---|

LOCAL RECOMMENDATIONS

| | |
|--------------------------------|---|
| Recommended local designations | Recommended non-contributing to a local historic district |
| Local recommendation notes | None |

1503 W 9TH ST



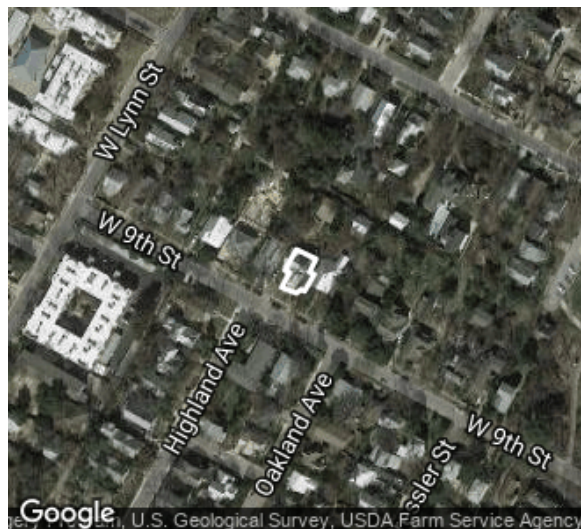
Oct 2017

1503 W 9TH ST



Oct 2017

1504 W 9TH ST



Date recorded: Oct 2017

Image ID: 8096

Coordinates: 30.277267, -97.7595166

IDENTIFICATION

| | |
|----------------------|---------------------------------|
| CAD Parcel ID | 109273 |
| Legal description | LOT 9 OLT 4 DIV Z WENDLANDTS |
| Acreage | 0.3088 |
| Building name | None |
| Identification notes | None |

INTEGRITY

| | |
|-----------------|--|
| Alterations | None visible |
| Additions | Rear 1st and 2nd story additions (2000); rear 1st and 2nd story deck and balcony addition (2008) |
| Integrity notes | None |

HISTORY

| | |
|---------------|------|
| History notes | None |
|---------------|------|

CLASSIFICATION

| | |
|-----------------------|---|
| Current use | Residential |
| Original use | Residential |
| Year built | 1920 |
| Source for year built | west Line National Register Historic District nomination |
| Type | Single-family house |
| Form | Bungalow |
| Stylistic influences | Craftsman |

PRIOR DOCUMENTATION

| | |
|--------------------|-------------------------------------|
| Prior designations | Non-contributing to a NRHP district |
|--------------------|-------------------------------------|

LOCAL RECOMMENDATIONS

| | |
|--------------------------------|--|
| Recommended local designations | Recommended contributing to a local historic district |
| Local recommendation notes | Previous non-contributing designation based on different integrity standards |

DESCRIPTION

| | |
|-------------------------|--------------|
| Stories | 2 |
| Roof form | Front-gabled |
| Exterior wall materials | Wood |

1504 W 9TH ST



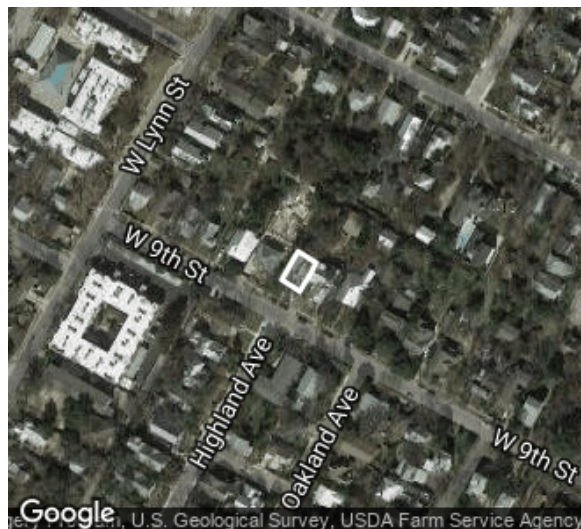
- Oct 2017

1504 W 9TH ST



Oct 2017

1506 W 9TH ST



Date recorded: Oct 2017

Image ID: 8098

Coordinates: 30.2773514, -97.7596781

IDENTIFICATION

| | |
|----------------------|---------------------------------|
| CAD Parcel ID | 109274 |
| Legal description | LOT 8 OLT 4 DIV Z WENDLANDTS |
| Acreage | 0.303 |
| Building name | None |
| Identification notes | None |

INTEGRITY

| | |
|-----------------|----------------------------------|
| Alterations | Exterior wall materials replaced |
| Additions | Rear addition |
| Integrity notes | None |

HISTORY

| | |
|---------------|------|
| History notes | None |
|---------------|------|

CLASSIFICATION

| | |
|-----------------------|---|
| Current use | Residential |
| Original use | Residential |
| Year built | 1920 |
| Source for year built | West Line National Register Historic District nomination |
| Type | Single-family house |
| Form | Bungalow |
| Stylistic influences | Craftsman |

PRIOR DOCUMENTATION

| | |
|--------------------|---------------------------------|
| Prior designations | Contributing to a NRHP district |
|--------------------|---------------------------------|

LOCAL RECOMMENDATIONS

| | |
|--------------------------------|---|
| Recommended local designations | Recommended contributing to a local historic district |
| Local recommendation notes | None |

DESCRIPTION

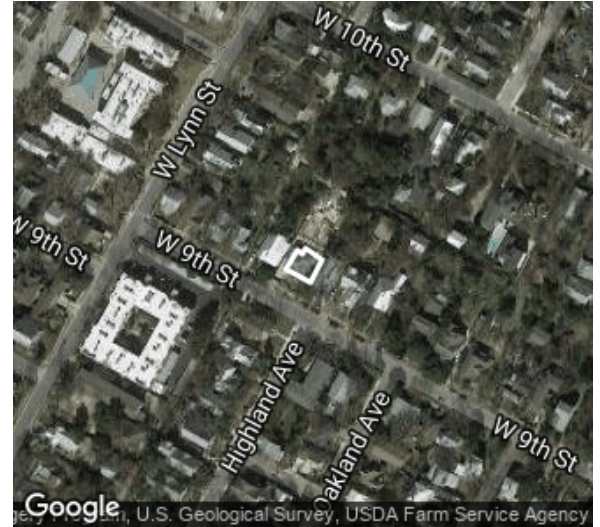
| | |
|-------------------------|--------------|
| Stories | 2 |
| Roof form | Front-gabled |
| Exterior wall materials | Wood |

1506 W 9TH ST



Oct 2017

1508 W 9TH ST



Date recorded: Oct 2017

Image ID: 8099

Coordinates: 30.277407, -97.7598406

IDENTIFICATION

| | |
|----------------------|---------------------------------|
| CAD Parcel ID | 109275 |
| Legal description | LOT 7 OLT 4 DIV Z WENDLANDTS |
| Acreage | 0.3016 |
| Building name | None |
| Identification notes | None |

INTEGRITY

| | |
|-----------------|---------------|
| Alterations | Porch altered |
| Additions | None visible |
| Integrity notes | None |

HISTORY

| | |
|---------------|------|
| History notes | None |
|---------------|------|

CLASSIFICATION

| | |
|-----------------------|---|
| Current use | Residential |
| Original use | Residential |
| Year built | 1915 |
| Source for year built | West Line National Register Historic District nomination |
| Type | Single-family house |
| Form | Center passage |
| Stylistic influences | Greek Revival |

PRIOR DOCUMENTATION

| | |
|--------------------|------------------------------------|
| Prior designations | Contributing to a NRHP district |
|--------------------|------------------------------------|

LOCAL RECOMMENDATIONS

| | |
|--------------------------------|--|
| Recommended local designations | Recommended contributing to a local historic district |
| Local recommendation notes | None |

DESCRIPTION

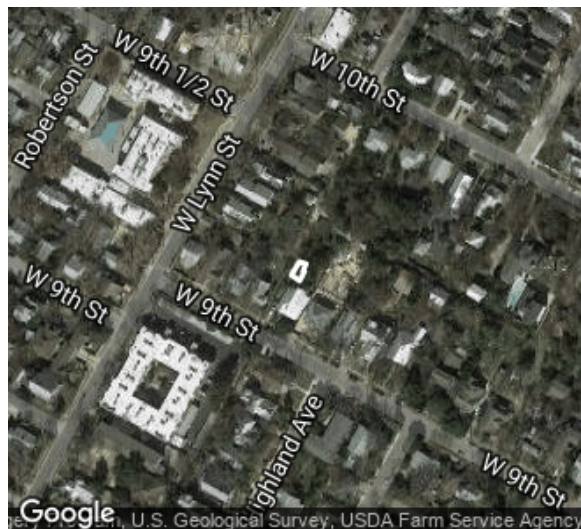
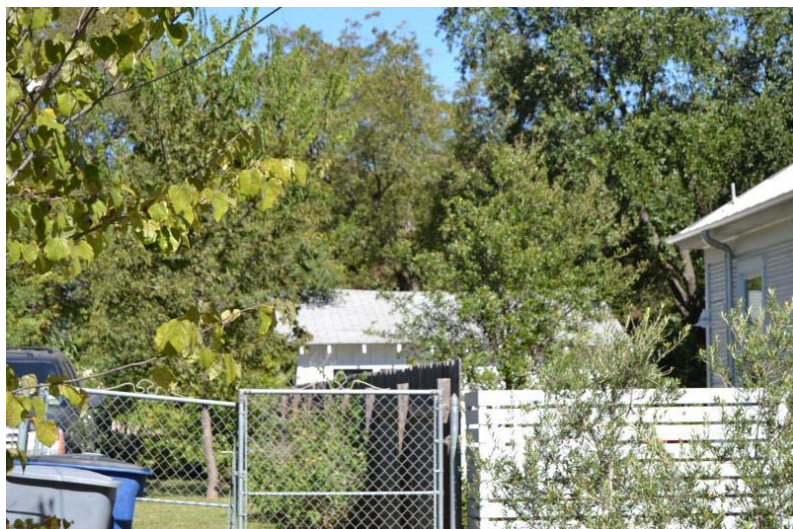
| | |
|-------------------------|--------|
| Stories | 2 |
| Roof form | Hipped |
| Exterior wall materials | Wood |

1508 W 9TH ST



Oct 2017

1510 W 9TH ST



Date recorded: Oct 2017

Image ID: 8103

Coordinates: 30.2776564, -97.7599873

IDENTIFICATION

| | |
|----------------------|---------------------------------|
| CAD Parcel ID | 109276 |
| Legal description | LOT 6 OLT 4 DIV Z WENDLANDTS |
| Acreage | 0.3078 |
| Building name | None |
| Identification notes | None |

INTEGRITY

| | |
|-----------------|--------------|
| Alterations | None visible |
| Additions | None visible |
| Integrity notes | None |

HISTORY

| | |
|---------------|------|
| History notes | None |
|---------------|------|

CLASSIFICATION

| | |
|-----------------------|---|
| Current use | Residential |
| Original use | Residential |
| Year built | 1920 |
| Source for year built | West Line National Register Historic District nomination |
| Type | Garage |
| Form | One-room |
| Stylistic influences | Craftsman |

PRIOR DOCUMENTATION

| | |
|--------------------|---|
| Prior designations | Non-contributing to West Line National Register Historic District |
|--------------------|---|

LOCAL RECOMMENDATIONS

| | |
|--------------------------------|--|
| Recommended local designations | Recommended contributing to a local historic district |
| Local recommendation notes | None |

DESCRIPTION

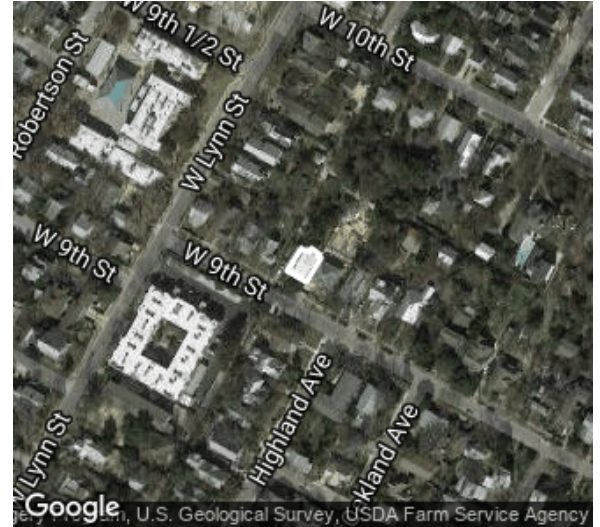
| | |
|-------------------------|-------------|
| Stories | 1 |
| Roof form | Side-gabled |
| Exterior wall materials | Wood |

1510 W 9TH ST



Oct 2017

1510 W 9TH ST



Date recorded: Oct 2017

Image ID: 8100

Coordinates: 30.2774718, -97.7600071

IDENTIFICATION

| | |
|----------------------|---------------------------------|
| CAD Parcel ID | 109276 |
| Legal description | LOT 6 OLT 4 DIV Z WENDLANDTS |
| Acreage | 0.3078 |
| Building name | None |
| Identification notes | None |

INTEGRITY

| | |
|-----------------|-----------------------------|
| Alterations | None visible |
| Additions | Dormer added, rear addition |
| Integrity notes | None |

HISTORY

| | |
|---------------|------|
| History notes | None |
|---------------|------|

CLASSIFICATION

| | |
|-----------------------|---|
| Current use | Residential |
| Original use | Residential |
| Year built | 1915 |
| Source for year built | West Line National Register Historic District nomination |
| Type | Single-family house |
| Form | L-plan |
| Stylistic influences | Folk Victorian, Classical Revival |

PRIOR DOCUMENTATION

| | |
|--------------------|------------------------------------|
| Prior designations | Contributing to a NRHP district |
|--------------------|------------------------------------|

LOCAL RECOMMENDATIONS

| | |
|--------------------------------|--|
| Recommended local designations | Recommended contributing to a local historic district |
| Local recommendation notes | None |

DESCRIPTION

| | |
|-------------------------|--------|
| Stories | 2 |
| Roof form | Hipped |
| Exterior wall materials | Wood |

1510 W 9TH ST



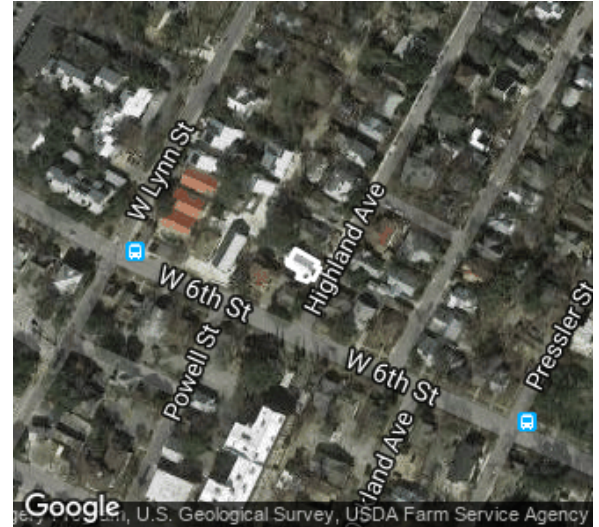
Oct 2017

1510 W 9TH ST



Oct 2017

602 HIGHLAND AVE



Date recorded: Oct 2017

Image ID: 7988

Coordinates: 30.2747675, -97.7614827

IDENTIFICATION

| | |
|----------------------|--|
| CAD Parcel ID | 106627 |
| Legal description | LOT 17 BLK B OLT 3 DIV Z TERRACE PARK |
| Acreage | 0.1645 |
| Building name | None |
| Identification notes | None |

INTEGRITY

| | |
|-----------------|---------------|
| Alterations | None visible |
| Additions | Rear addition |
| Integrity notes | None |

HISTORY

| | |
|---------------|------|
| History notes | None |
|---------------|------|

CLASSIFICATION

| | |
|-----------------------|---|
| Current use | Residential |
| Original use | Residential |
| Year built | 1915 |
| Source for year built | West Line National Register Historic District nomination |
| Type | Single-family house |
| Form | Bungalow |
| Stylistic influences | Craftsman |

PRIOR DOCUMENTATION

| | |
|--------------------|------------------------------------|
| Prior designations | Contributing to a NRHP district |
|--------------------|------------------------------------|

LOCAL RECOMMENDATIONS

| | |
|--------------------------------|--|
| Recommended local designations | Recommended contributing to a local historic district |
| Local recommendation notes | None |

DESCRIPTION

| | |
|-------------------------|--------------|
| Stories | 1 |
| Roof form | Front-gabled |
| Exterior wall materials | Wood |

602 HIGHLAND AVE



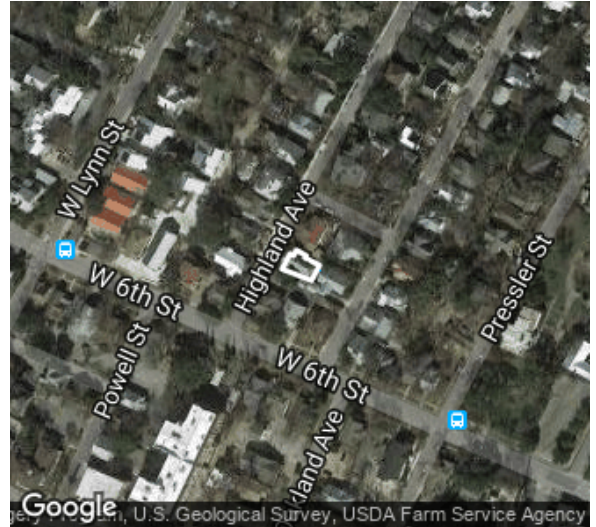
Oct 2017

602 HIGHLAND AVE



Oct 2017

603 HIGHLAND AVE



Date recorded: Oct 2017

Image ID: 7981

Coordinates: 30.2747633, -97.7610759

IDENTIFICATION

| | |
|----------------------|-----------------------------|
| CAD Parcel ID | 106687 |
| Legal description | 60 X 75 FT OLT 3 DIVISION Z |
| Acreage | 0.1041 |
| Building name | None |
| Identification notes | None |

INTEGRITY

| | |
|-----------------|--|
| Alterations | Porch partially enclosed, Porch altered |
| Additions | None visible |
| Integrity notes | None |

HISTORY

| | |
|---------------|------|
| History notes | None |
|---------------|------|

CLASSIFICATION

| | |
|-----------------------|---|
| Current use | Residential |
| Original use | Residential |
| Year built | 1925 |
| Source for year built | West Line National Register Historic District nomination |
| Type | Single-family house |
| Form | Bungalow |
| Stylistic influences | Craftsman |

PRIOR DOCUMENTATION

| | |
|--------------------|------------------------------------|
| Prior designations | Contributing to a NRHP district |
|--------------------|------------------------------------|

LOCAL RECOMMENDATIONS

| | |
|--------------------------------|--|
| Recommended local designations | Recommended contributing to a local historic district |
| Local recommendation notes | None |

DESCRIPTION

| | |
|-------------------------|--------------|
| Stories | 1 |
| Roof form | Cross-gabled |
| Exterior wall materials | Wood, Brick |

603 HIGHLAND AVE



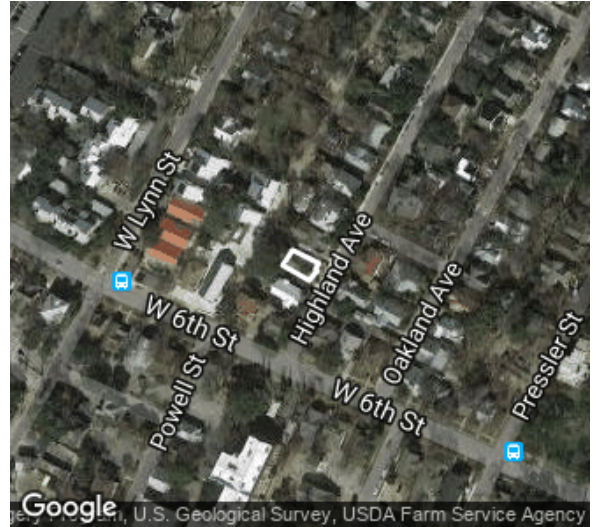
Oct 2017

603 HIGHLAND AVE



Oct 2017

604 HIGHLAND AVE



Date recorded: Oct 2017

Image ID: 7994

Coordinates: 30.274927, -97.7614148

IDENTIFICATION

| | |
|----------------------|--|
| CAD Parcel ID | 106626 |
| Legal description | LOT 16 BLK B OLT 3 DIV Z TERRACE PARK |
| Acreage | 0.1622 |
| Building name | None |
| Identification notes | None |

INTEGRITY

| | |
|-----------------|----------------|
| Alterations | Doors replaced |
| Additions | Rear addition |
| Integrity notes | None |

HISTORY

| | |
|---------------|------|
| History notes | None |
|---------------|------|

CLASSIFICATION

| | |
|-----------------------|---|
| Current use | Residential |
| Original use | Residential |
| Year built | 1925 |
| Source for year built | West Line National Register Historic District nomination |
| Type | Single-family house |
| Form | Hall-and-parlor |
| Stylistic influences | Classical Revival |

PRIOR DOCUMENTATION

| | |
|--------------------|------------------------------------|
| Prior designations | Contributing to a NRHP district |
|--------------------|------------------------------------|

LOCAL RECOMMENDATIONS

| | |
|--------------------------------|--|
| Recommended local designations | Recommended contributing to a local historic district |
| Local recommendation notes | None |

DESCRIPTION

| | |
|-------------------------|-------------|
| Stories | 1 |
| Roof form | Side-gabled |
| Exterior wall materials | Wood |

604 HIGHLAND AVE



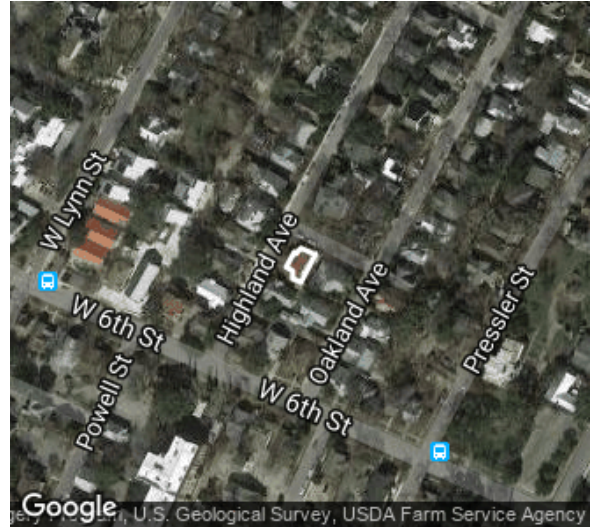
Oct 2017

604 HIGHLAND AVE



Oct 2017

605 HIGHLAND AVE



Date recorded: Oct 2017

Image ID: 7993

Coordinates: 30.274932, -97.7609662

IDENTIFICATION

| | |
|----------------------|-----------------------------|
| CAD Parcel ID | 106688 |
| Legal description | 80 X 75 FT OLT 3 DIVISION Z |
| Acreage | 0.1328 |
| Building name | None |
| Identification notes | None |

INTEGRITY

| | |
|-----------------|---------------|
| Alterations | Porch altered |
| Additions | Side addition |
| Integrity notes | None |

HISTORY

| | |
|---------------|------|
| History notes | None |
|---------------|------|

CLASSIFICATION

| | |
|-----------------------|--|
| Current use | Residential |
| Original use | Residential |
| Year built | 1920 |
| Source for year built | West Line National Register Historic District nomination |
| Type | Single-family house |
| Form | Bungalow |
| Stylistic influences | Craftsman |

PRIOR DOCUMENTATION

| | |
|--------------------|---------------------------------|
| Prior designations | Contributing to a NRHP district |
|--------------------|---------------------------------|

LOCAL RECOMMENDATIONS

| | |
|--------------------------------|---|
| Recommended local designations | Recommended contributing to a local historic district |
| Local recommendation notes | None |

DESCRIPTION

| | |
|-------------------------|--------------|
| Stories | 1 |
| Roof form | Cross-gabled |
| Exterior wall materials | Wood, Brick |

605 HIGHLAND AVE



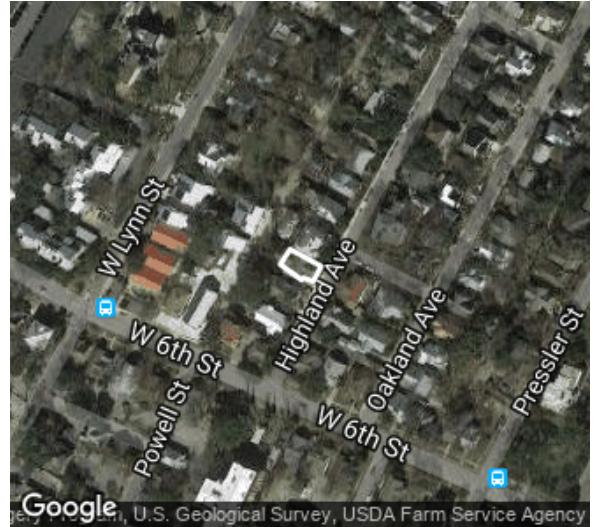
Oct 2017

605 HIGHLAND AVE



Oct 2017

606 HIGHLAND AVE



Date recorded: Oct 2017

Image ID: 7999

Coordinates: 30.2750645, -97.7613169

IDENTIFICATION

| | |
|----------------------|--|
| CAD Parcel ID | 106625 |
| Legal description | LOT 15 BLK B OLT 3 DIV Z TERRACE PARK |
| Acreage | 0.1649 |
| Building name | None |
| Identification notes | None |

INTEGRITY

| | |
|-----------------|--|
| Alterations | Doors replaced |
| Additions | Rear addition, basement addition (2018) |
| Integrity notes | None |

HISTORY

| | |
|---------------|------|
| History notes | None |
|---------------|------|

CLASSIFICATION

| | |
|-----------------------|---|
| Current use | Residential |
| Original use | Residential |
| Year built | 1915 |
| Source for year built | West Line National Register Historic District nomination |
| Type | Single-family house |
| Form | Bungalow |
| Stylistic influences | Craftsman |

PRIOR DOCUMENTATION

| | |
|--------------------|------------------------------------|
| Prior designations | Contributing to a NRHP district |
|--------------------|------------------------------------|

LOCAL RECOMMENDATIONS

| | |
|--------------------------------|--|
| Recommended local designations | Recommended contributing to a local historic district |
| Local recommendation notes | None |

DESCRIPTION

| | |
|-------------------------|--------------|
| Stories | 1 |
| Roof form | Front-gabled |
| Exterior wall materials | Brick, Wood |

606 HIGHLAND AVE



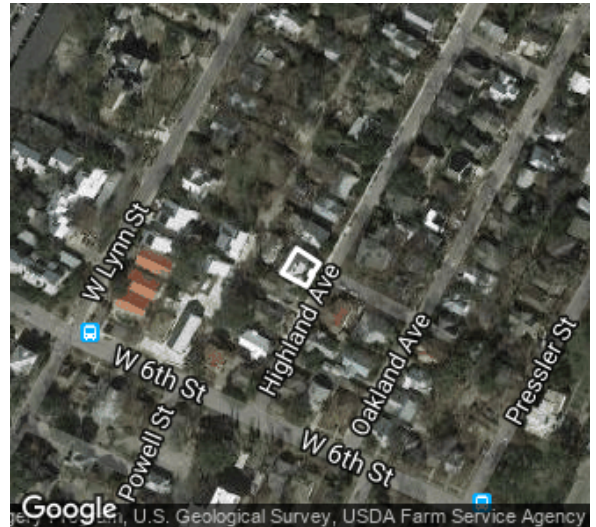
Oct 2017

606 HIGHLAND AVE



Oct 2017

608 HIGHLAND AVE



Date recorded: Oct 2017

Image ID: 8004

Coordinates: 30.2751825, -97.7612286

IDENTIFICATION

| | |
|----------------------|---|
| CAD Parcel ID | 540888 |
| Legal description | CITY COTTAGES ON HIGHLAND CONDOMINIUMS PLUS 50% INT IN COM AREA |
| Acreage | 0.0813 |
| Building name | None |
| Identification notes | Condo units TCAD ID 540889 and 540890 |

CLASSIFICATION

| | |
|-----------------------|-----------------|
| Current use | Residential |
| Original use | Residential |
| Year built | 2000 |
| Source for year built | Building permit |
| Type | Duplex house |
| Form | Massed plan |
| Stylistic influences | Craftsman |

DESCRIPTION

| | |
|-------------------------|--------------|
| Stories | 2 |
| Roof form | Front-gabled |
| Exterior wall materials | Wood |

INTEGRITY

| | |
|-----------------|--------------|
| Alterations | None visible |
| Additions | None visible |
| Integrity notes | None |

HISTORY

| | |
|---------------|------|
| History notes | None |
|---------------|------|

PRIOR DOCUMENTATION

| | |
|--------------------|---|
| Prior designations | Non-contributing to West Line National Register Historic District |
|--------------------|---|

LOCAL RECOMMENDATIONS

| | |
|--------------------------------|---|
| Recommended local designations | Recommended non-contributing to a local historic district |
| Local recommendation notes | None |

608 HIGHLAND AVE



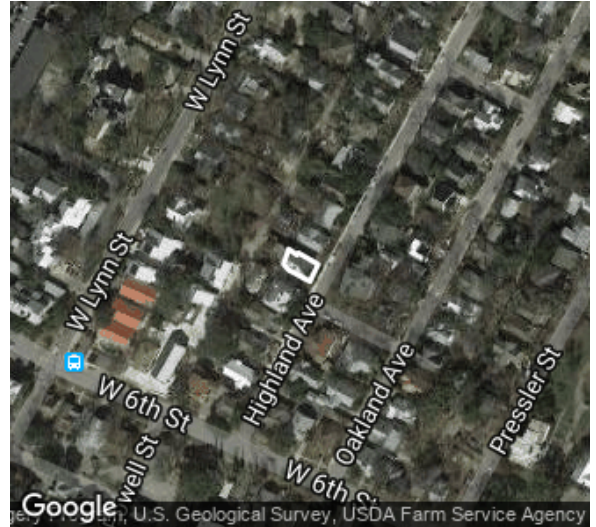
Oct 2017

608 HIGHLAND AVE



Oct 2017

610 HIGHLAND AVE



Date recorded: Oct 2017

Image ID: 8006

Coordinates: 30.2753508, -97.7611298

IDENTIFICATION

| | |
|----------------------|--|
| CAD Parcel ID | 106623 |
| Legal description | LOT 13 BLK B OLT 3 DIV Z TERRACE PARK |
| Acreage | 0.1643 |
| Building name | None |
| Identification notes | None |

INTEGRITY

| | |
|-----------------|------------------------------|
| Alterations | Fenestration pattern altered |
| Additions | Side dormer added |
| Integrity notes | None |

HISTORY

| | |
|---------------|------|
| History notes | None |
|---------------|------|

CLASSIFICATION

| | |
|-----------------------|---|
| Current use | Residential |
| Original use | Residential |
| Year built | 1915 |
| Source for year built | West Line National Register Historic District nomination |
| Type | Single-family house |
| Form | Bungalow |
| Stylistic influences | Craftsman |

PRIOR DOCUMENTATION

| | |
|--------------------|------------------------------------|
| Prior designations | Contributing to a NRHP district |
|--------------------|------------------------------------|

LOCAL RECOMMENDATIONS

| | |
|--------------------------------|--|
| Recommended local designations | Recommended contributing to a local historic district |
| Local recommendation notes | None |

DESCRIPTION

| | |
|-------------------------|--------------|
| Stories | 2 |
| Roof form | Front-gabled |
| Exterior wall materials | Stucco, Wood |

610 HIGHLAND AVE



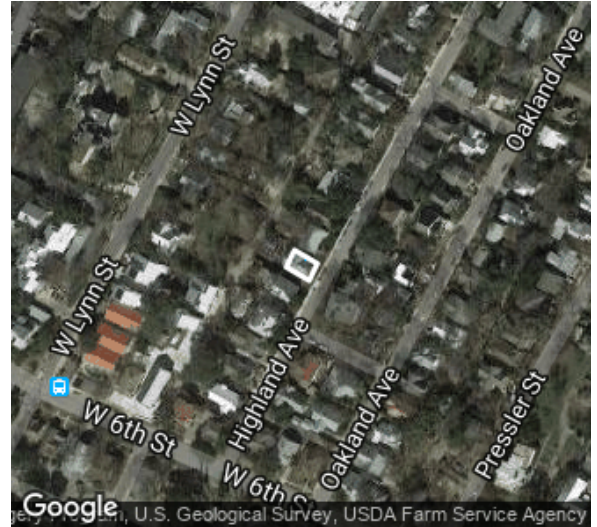
Oct 2017

610 HIGHLAND AVE



Oct 2017

612 HIGHLAND AVE



Date recorded: Oct 2017

Image ID: 8021

Coordinates: 30.2754824, -97.7610278

IDENTIFICATION

| | |
|----------------------|--|
| CAD Parcel ID | 106622 |
| Legal description | LOT 12 BLK B OLT 3 DIV Z TERRACE PARK |
| Acreage | 0.1646 |
| Building name | None |
| Identification notes | None |

INTEGRITY

| | |
|-----------------|---------------|
| Alterations | Porch altered |
| Additions | Rear addition |
| Integrity notes | None |

HISTORY

| | |
|---------------|------|
| History notes | None |
|---------------|------|

CLASSIFICATION

| | |
|-----------------------|---|
| Current use | Residential |
| Original use | Residential |
| Year built | 1915 |
| Source for year built | West Line National Register Historic District nomination |
| Type | Single-family house |
| Form | Bungalow |
| Stylistic influences | Craftsman |

PRIOR DOCUMENTATION

| | |
|--------------------|------------------------------------|
| Prior designations | Contributing to a NRHP district |
|--------------------|------------------------------------|

LOCAL RECOMMENDATIONS

| | |
|--------------------------------|--|
| Recommended local designations | Recommended contributing to a local historic district |
| Local recommendation notes | None |

DESCRIPTION

| | |
|-------------------------|--------------|
| Stories | 1 |
| Roof form | Front-gabled |
| Exterior wall materials | Wood |

612 HIGHLAND AVE



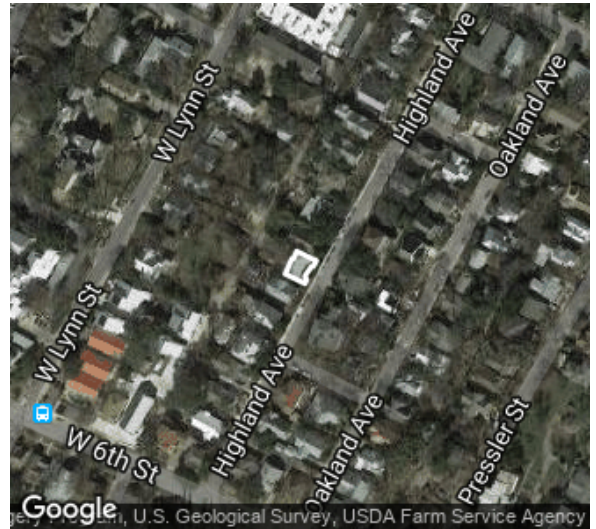
Oct 2017

612 HIGHLAND AVE



Oct 2017

614 HIGHLAND AVE



Date recorded: Oct 2017

Image ID: 8023

Coordinates: 30.2756118, -97.7609451

IDENTIFICATION

| | |
|----------------------|--|
| CAD Parcel ID | 106621 |
| Legal description | LOT 11 BLK B OLT 3 DIV Z TERRACE PARK |
| Acreage | 0.1646 |
| Building name | None |
| Identification notes | None |

INTEGRITY

| | |
|-----------------|--------------|
| Alterations | None visible |
| Additions | None visible |
| Integrity notes | None |

HISTORY

| | |
|---------------|------|
| History notes | None |
|---------------|------|

CLASSIFICATION

| | |
|-----------------------|---|
| Current use | Residential |
| Original use | Residential |
| Year built | 1960 |
| Source for year built | West Line National Register Historic District nomination |
| Type | Duplex house |
| Form | Ranch |
| Stylistic influences | Ranch Style |

PRIOR DOCUMENTATION

| | |
|--------------------|--|
| Prior designations | Non-contributing to a NRHP district |
|--------------------|--|

LOCAL RECOMMENDATIONS

| | |
|--------------------------------|--|
| Recommended local designations | Recommended non-contributing to a local historic district |
| Local recommendation notes | None |

DESCRIPTION

| | |
|-------------------------|-----------------------------------|
| Stories | 1 |
| Roof form | Flat |
| Exterior wall materials | Fiber cement siding (Asbestos) |

614 HIGHLAND AVE



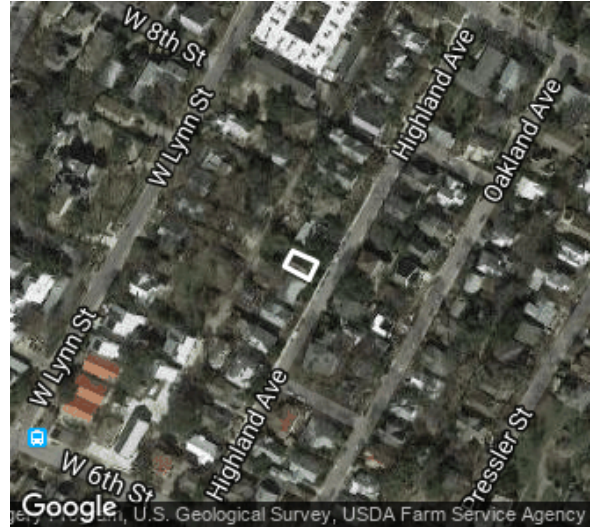
Oct 2017

614 HIGHLAND AVE



Oct 2017

616 HIGHLAND AVE



Date recorded: Oct 2017

Image ID: 8025

Coordinates: 30.2757528, -97.7609046

IDENTIFICATION

| | |
|----------------------|---|
| CAD Parcel ID | 106620 |
| Legal description | S 54 FT OF LOT 10 BLK B OLT 3 DIV Z TERRACE PARK |
| Acreage | 0.1477 |
| Building name | None |
| Identification notes | None |

INTEGRITY

| | |
|-----------------|--------------|
| Alterations | None visible |
| Additions | None visible |
| Integrity notes | None |

HISTORY

| | |
|---------------|------|
| History notes | None |
|---------------|------|

CLASSIFICATION

| | |
|-----------------------|---|
| Current use | Residential |
| Original use | Residential |
| Year built | 1915 |
| Source for year built | West Line National Register Historic District nomination |
| Type | Single-family house |
| Form | Bungalow |
| Stylistic influences | Craftsman |

PRIOR DOCUMENTATION

| | |
|--------------------|------------------------------------|
| Prior designations | Contributing to a NRHP district |
|--------------------|------------------------------------|

LOCAL RECOMMENDATIONS

| | |
|--------------------------------|--|
| Recommended local designations | Recommended contributing to a local historic district |
| Local recommendation notes | None |

DESCRIPTION

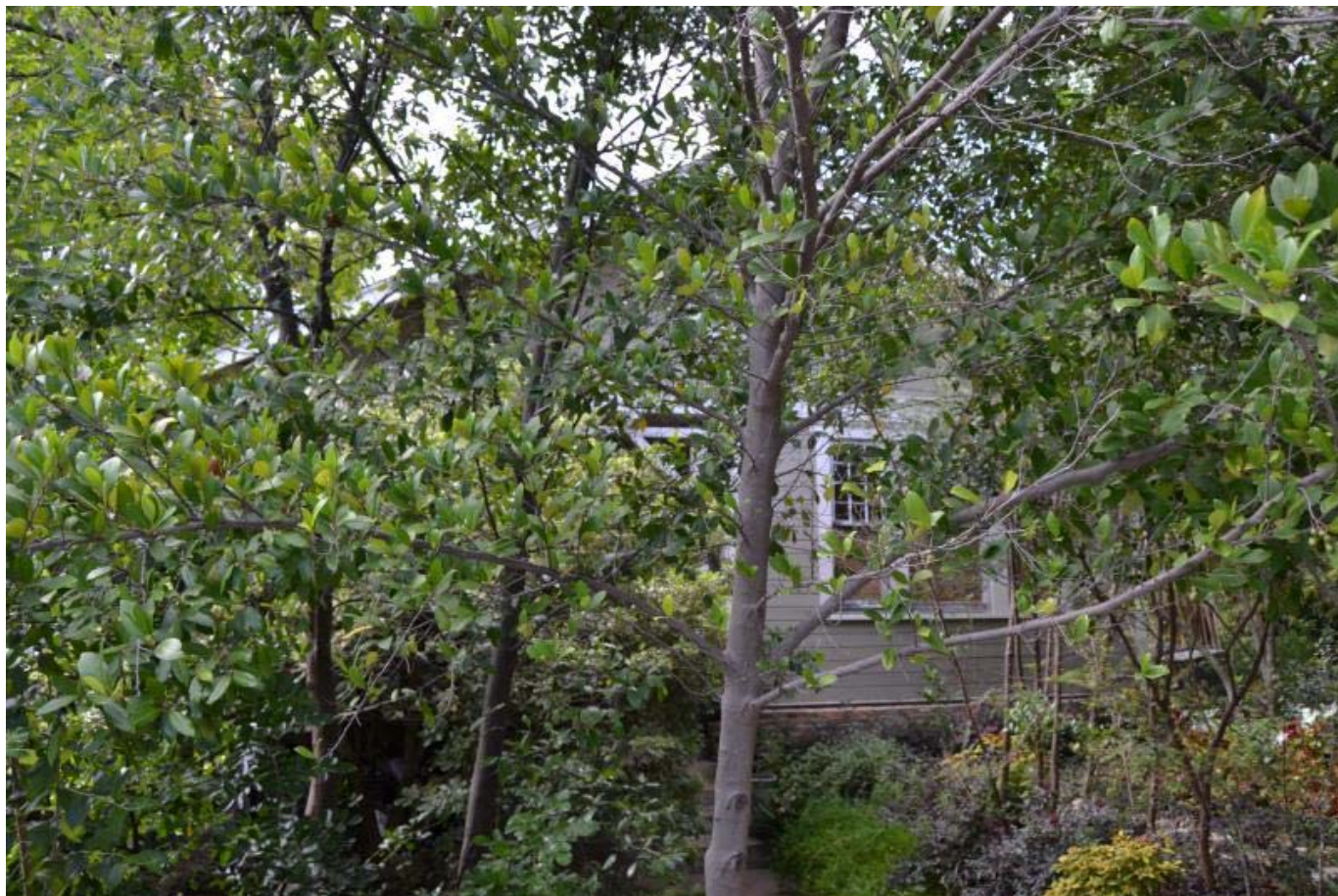
| | |
|-------------------------|--------------|
| Stories | 1 |
| Roof form | Front-gabled |
| Exterior wall materials | Wood |

616 HIGHLAND AVE



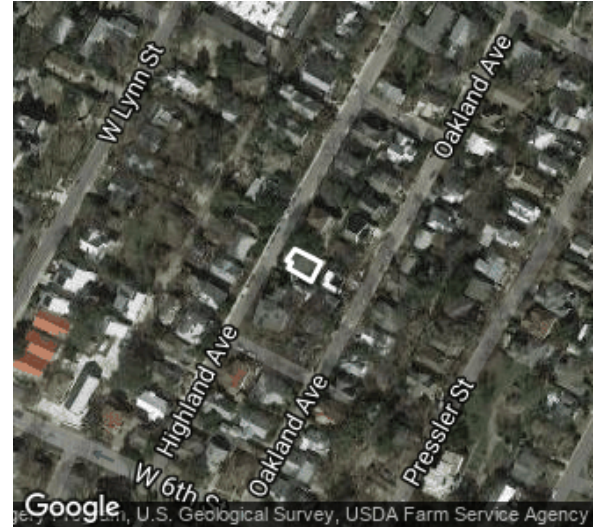
Oct 2017

616 HIGHLAND AVE



Oct 2017

617 HIGHLAND AVE



Date recorded: Oct 2017

Image ID: 8010

Coordinates: 30.2755244, -97.7605833

IDENTIFICATION

| | |
|----------------------|-----------------------------|
| CAD Parcel ID | 106695 |
| Legal description | 50 X 75 FT OLT 3 DIVISION Z |
| Acreage | 0.0919 |
| Building name | None |
| Identification notes | None |

INTEGRITY

| | |
|-----------------|---------------------------|
| Alterations | None visible |
| Additions | Front dormer likely added |
| Integrity notes | None |

HISTORY

| | |
|---------------|------|
| History notes | None |
|---------------|------|

CLASSIFICATION

| | |
|-----------------------|--|
| Current use | Residential |
| Original use | Residential |
| Year built | 1920 |
| Source for year built | West Line National Register Historic District nomination |
| Type | Single-family house |
| Form | Bungalow |
| Stylistic influences | Craftsman |

PRIOR DOCUMENTATION

| | |
|--------------------|---------------------------------|
| Prior designations | Contributing to a NRHP district |
|--------------------|---------------------------------|

LOCAL RECOMMENDATIONS

| | |
|--------------------------------|---|
| Recommended local designations | Recommended contributing to a local historic district |
| Local recommendation notes | None |

DESCRIPTION

| | |
|-------------------------|--------------|
| Stories | 2 |
| Roof form | Cross-gabled |
| Exterior wall materials | Wood, Stucco |

617 HIGHLAND AVE



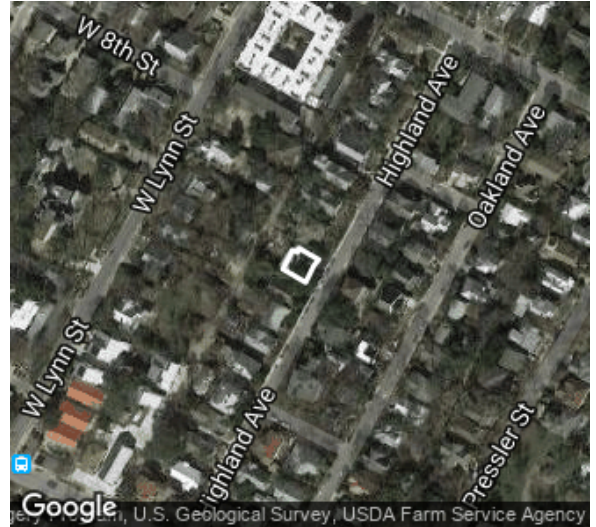
Oct 2017

617 HIGHLAND AVE



Oct 2017

700 HIGHLAND AVE



Date recorded: Oct 2017

Image ID: 8031

Coordinates: 30.2759015, -97.7608069

IDENTIFICATION

| | |
|----------------------|---|
| CAD Parcel ID | 106619 |
| Legal description | LOT 9 & N 5 FT OF LOT 10 BLK B OLT 3 DIV Z TERRACE PARK |
| Acreage | 0.1825 |
| Building name | None |
| Identification notes | None |

INTEGRITY

| | |
|-----------------|----------------|
| Alterations | Doors replaced |
| Additions | Side addition |
| Integrity notes | None |

HISTORY

| | |
|---------------|------|
| History notes | None |
|---------------|------|

PRIOR DOCUMENTATION

| | |
|--------------------|---------------------------------|
| Prior designations | Contributing to a NRHP district |
|--------------------|---------------------------------|

LOCAL RECOMMENDATIONS

| | |
|--------------------------------|---|
| Recommended local designations | Recommended contributing to a local historic district |
| Local recommendation notes | None |

CLASSIFICATION

| | |
|-----------------------|---|
| Current use | Residential |
| Original use | Residential |
| Year built | 1915 |
| Source for year built | West Line National Register Historic District nomination |
| Type | Single-family house |
| Form | Center passage |
| Stylistic influences | Classical Revival |

DESCRIPTION

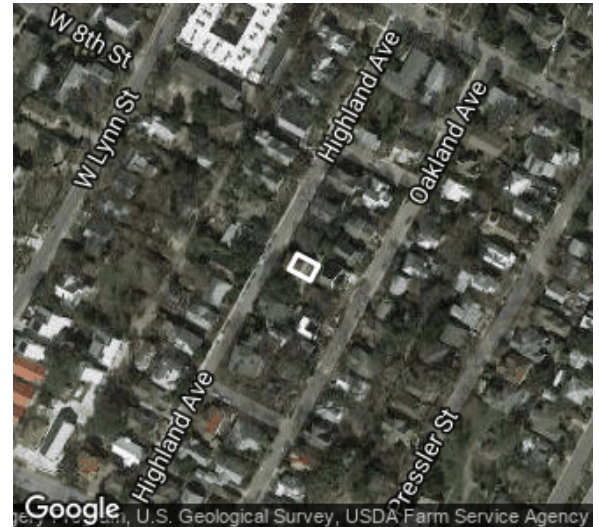
| | |
|-------------------------|-------------|
| Stories | 1 |
| Roof form | Side-gabled |
| Exterior wall materials | Wood |

700 HIGHLAND AVE



Oct 2017

701 HIGHLAND AVE



Date recorded: Oct 2017

Image ID: 8014

Coordinates: 30.2757554, -97.7604371

IDENTIFICATION

| | |
|----------------------|---|
| CAD Parcel ID | 106700 |
| Legal description | LOT 3 BLK D OLT 3 DIV Z TERRACE PARK |
| Acreage | 0.2054 |
| Building name | None |
| Identification notes | None |

INTEGRITY

| | |
|-----------------|---|
| Alterations | Fenestration pattern altered, windows replaced, converted to duplex |
| Additions | Rear addition |
| Integrity notes | None |

HISTORY

| | |
|---------------|------|
| History notes | None |
|---------------|------|

CLASSIFICATION

| | |
|-----------------------|---|
| Current use | Residential |
| Original use | Residential |
| Year built | 1915 |
| Source for year built | West Line National Register Historic District nomination |
| Type | Single-family house |
| Form | Massed plan |
| Stylistic influences | Prairie |

PRIOR DOCUMENTATION

| | |
|--------------------|---|
| Prior designations | Contributing to West Line National Register Historic District |
|--------------------|---|

LOCAL RECOMMENDATIONS

| | |
|--------------------------------|--|
| Recommended local designations | Recommended contributing to a local historic district |
| Local recommendation notes | None |

DESCRIPTION

| | |
|-------------------------|-------------|
| Stories | 2 |
| Roof form | Hipped |
| Exterior wall materials | Brick, Wood |

701 HIGHLAND AVE



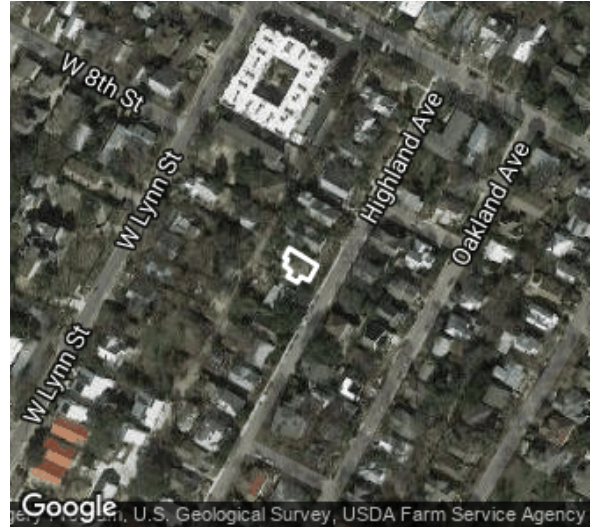
Oct 2017

701 HIGHLAND AVE



Oct 2017

702 HIGHLAND AVE



Date recorded: Oct 2017

Image ID: 8039

Coordinates: 30.2760799, -97.7607277

IDENTIFICATION

| | |
|----------------------|---|
| CAD Parcel ID | 106618 |
| Legal description | LOT 8 BLK B OLT 3 DIV Z TERRACE PARK |
| Acreage | 0.165 |
| Building name | None |
| Identification notes | None |

INTEGRITY

| | |
|-----------------|---------------|
| Alterations | None visible |
| Additions | Side addition |
| Integrity notes | None |

HISTORY

| | |
|---------------|------|
| History notes | None |
|---------------|------|

CLASSIFICATION

| | |
|-----------------------|---|
| Current use | Residential |
| Original use | Residential |
| Year built | 1915 |
| Source for year built | West Line National Register Historic District nomination |
| Type | Single-family house |
| Form | Bungalow |
| Stylistic influences | Craftsman |

PRIOR DOCUMENTATION

| | |
|--------------------|------------------------------------|
| Prior designations | Contributing to a NRHP district |
|--------------------|------------------------------------|

LOCAL RECOMMENDATIONS

| | |
|--------------------------------|--|
| Recommended local designations | Recommended contributing to a local historic district |
| Local recommendation notes | None |

DESCRIPTION

| | |
|-------------------------|--------|
| Stories | 2 |
| Roof form | Hipped |
| Exterior wall materials | Wood |

702 HIGHLAND AVE



Oct 2017

702 HIGHLAND AVE



Oct 2017