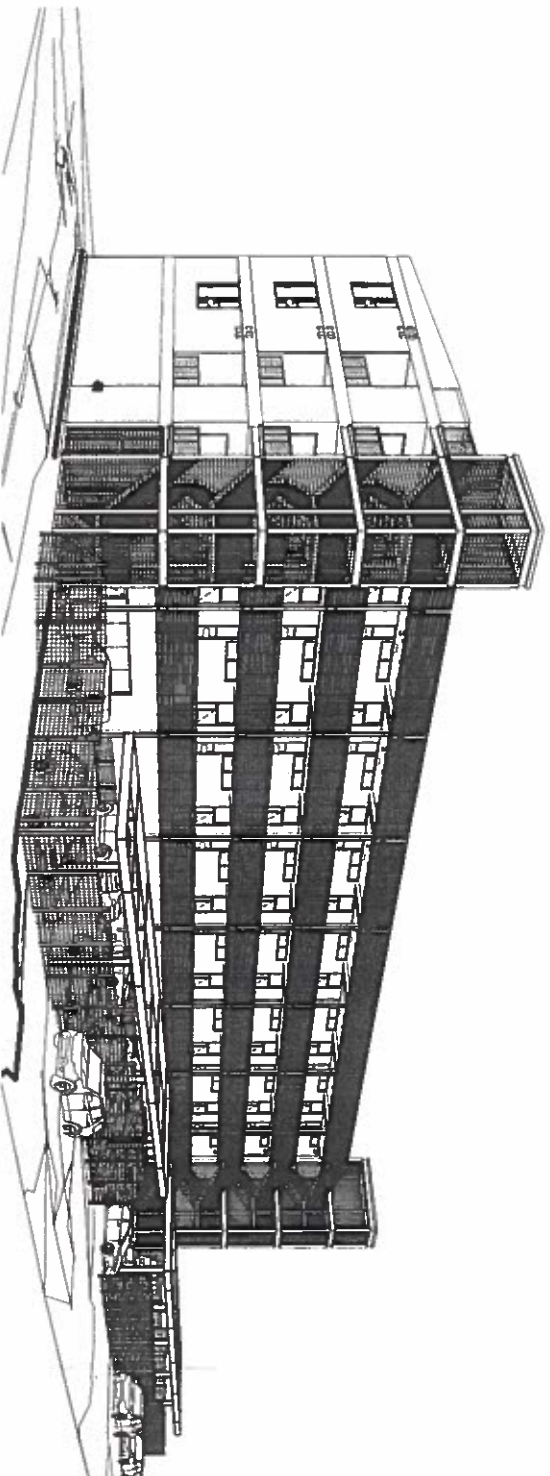


Sketch Rendering - Northwest Corner



Sketch Rendering - Northeast Corner



D+FORM

NOT A BUILDING PERMIT SET
AUSTIN, TEXAS 78701
DATE: 10/10/2017
PROJECT: 1322 EAST 12TH STREET, AUSTIN, TEXAS 78701

CONTRACT NO. 1322-13
PROJECT NO. 1322-13
SHEET NO. 1322-13
DATE: 10/10/2017
PROJECT: 1322 EAST 12TH STREET, AUSTIN, TEXAS 78701

NOTES

1. THIS SET OF PLANS IS THE PROPERTY OF D+FORM ARCHITECTS, P.C. AND IS NOT TO BE REPRODUCED OR COPIED IN ANY MANNER WITHOUT THE WRITTEN PERMISSION OF D+FORM ARCHITECTS, P.C.

NOT FOR CONSTRUCTION

1322 EAST
12TH STREET
AUSTIN, TEXAS

SP-2016-0469C

BUILDING PERMIT SET -
NOT FOR CONSTRUCTION



10/10/17

SCALE: 1/8" = 1'-0"

DATE: 10/10/2017

PROJECT NO. 1322-13

DATE: 10/10/2017

PROJECT NO. 1322-13

DATE: 10/10/2017

PROJECT NO. 1322-13

DATE: 10/10/2017

PROJECT NO. 1322-13

DATE: 10/10/2017

PROJECT NO. 1322-13

DATE: 10/10/2017

SP-2016-0469C

1322 EAST 12TH STREET

AUSTIN, TEXAS

10/10/2017

1322-13

10/10/2017

1322-13

10/10/2017

1322-13

10/10/2017

1322-13

10/10/2017

1322-13

10/10/2017

1322-13

10/10/2017

1322-13

10/10/2017

1322-13

10/10/2017

1322-13

10/10/2017

1322-13

10/10/2017

1322-13

10/10/2017

1322-13

10/10/2017

1322-13

10/10/2017

1322-13

10/10/2017

1322-13

10/10/2017

1322-13

10/10/2017

1322-13

10/10/2017

1322-13

10/10/2017

1322-13

10/10/2017

1322-13

10/10/2017

1322-13

D+FORM

As of 12/15/2017, the City of Austin has adopted the following standards for the exterior elevations of buildings. These standards are intended to provide a minimum level of quality and consistency for the exterior elevations of buildings in the City of Austin. The standards are not intended to be a substitute for the professional judgment of the architect or engineer, and they are not intended to be a substitute for the applicable building codes. The standards are intended to provide a minimum level of quality and consistency for the exterior elevations of buildings in the City of Austin.

Contractor and architect are responsible for obtaining all necessary permits and approvals from the City of Austin. The contractor and architect are responsible for ensuring that the exterior elevations of the building comply with the applicable building codes and the City of Austin standards. The contractor and architect are responsible for ensuring that the exterior elevations of the building are of high quality and are consistent with the City of Austin standards.

CONTACTS

PROJECT: 1322 EAST 12TH STREET, SUITE 202
OWNER: WILLIAM H. WATT, HANNAH
ARCHITECT: WILLIAM H. WATT, HANNAH
CONTRACT: WILLIAM H. WATT, HANNAH

ARCHITECT: WILLIAM H. WATT, HANNAH
CONTRACT: WILLIAM H. WATT, HANNAH
PROJECT: 1322 EAST 12TH STREET, SUITE 202

ARCHITECT: WILLIAM H. WATT, HANNAH
CONTRACT: WILLIAM H. WATT, HANNAH
PROJECT: 1322 EAST 12TH STREET, SUITE 202

ARCHITECT: WILLIAM H. WATT, HANNAH
CONTRACT: WILLIAM H. WATT, HANNAH
PROJECT: 1322 EAST 12TH STREET, SUITE 202

ARCHITECT: WILLIAM H. WATT, HANNAH
CONTRACT: WILLIAM H. WATT, HANNAH
PROJECT: 1322 EAST 12TH STREET, SUITE 202

ARCHITECT: WILLIAM H. WATT, HANNAH
CONTRACT: WILLIAM H. WATT, HANNAH
PROJECT: 1322 EAST 12TH STREET, SUITE 202

ARCHITECT: WILLIAM H. WATT, HANNAH
CONTRACT: WILLIAM H. WATT, HANNAH
PROJECT: 1322 EAST 12TH STREET, SUITE 202

ARCHITECT: WILLIAM H. WATT, HANNAH
CONTRACT: WILLIAM H. WATT, HANNAH
PROJECT: 1322 EAST 12TH STREET, SUITE 202

ARCHITECT: WILLIAM H. WATT, HANNAH
CONTRACT: WILLIAM H. WATT, HANNAH
PROJECT: 1322 EAST 12TH STREET, SUITE 202

ARCHITECT: WILLIAM H. WATT, HANNAH
CONTRACT: WILLIAM H. WATT, HANNAH
PROJECT: 1322 EAST 12TH STREET, SUITE 202

ARCHITECT: WILLIAM H. WATT, HANNAH
CONTRACT: WILLIAM H. WATT, HANNAH
PROJECT: 1322 EAST 12TH STREET, SUITE 202

ARCHITECT: WILLIAM H. WATT, HANNAH
CONTRACT: WILLIAM H. WATT, HANNAH
PROJECT: 1322 EAST 12TH STREET, SUITE 202

ARCHITECT: WILLIAM H. WATT, HANNAH
CONTRACT: WILLIAM H. WATT, HANNAH
PROJECT: 1322 EAST 12TH STREET, SUITE 202

ARCHITECT: WILLIAM H. WATT, HANNAH
CONTRACT: WILLIAM H. WATT, HANNAH
PROJECT: 1322 EAST 12TH STREET, SUITE 202

ARCHITECT: WILLIAM H. WATT, HANNAH
CONTRACT: WILLIAM H. WATT, HANNAH
PROJECT: 1322 EAST 12TH STREET, SUITE 202

ARCHITECT: WILLIAM H. WATT, HANNAH
CONTRACT: WILLIAM H. WATT, HANNAH
PROJECT: 1322 EAST 12TH STREET, SUITE 202

ARCHITECT: WILLIAM H. WATT, HANNAH
CONTRACT: WILLIAM H. WATT, HANNAH
PROJECT: 1322 EAST 12TH STREET, SUITE 202

ARCHITECT: WILLIAM H. WATT, HANNAH
CONTRACT: WILLIAM H. WATT, HANNAH
PROJECT: 1322 EAST 12TH STREET, SUITE 202

ARCHITECT: WILLIAM H. WATT, HANNAH
CONTRACT: WILLIAM H. WATT, HANNAH
PROJECT: 1322 EAST 12TH STREET, SUITE 202

ARCHITECT: WILLIAM H. WATT, HANNAH
CONTRACT: WILLIAM H. WATT, HANNAH
PROJECT: 1322 EAST 12TH STREET, SUITE 202

ARCHITECT: WILLIAM H. WATT, HANNAH
CONTRACT: WILLIAM H. WATT, HANNAH
PROJECT: 1322 EAST 12TH STREET, SUITE 202

ARCHITECT: WILLIAM H. WATT, HANNAH
CONTRACT: WILLIAM H. WATT, HANNAH
PROJECT: 1322 EAST 12TH STREET, SUITE 202

ARCHITECT: WILLIAM H. WATT, HANNAH
CONTRACT: WILLIAM H. WATT, HANNAH
PROJECT: 1322 EAST 12TH STREET, SUITE 202

ARCHITECT: WILLIAM H. WATT, HANNAH
CONTRACT: WILLIAM H. WATT, HANNAH
PROJECT: 1322 EAST 12TH STREET, SUITE 202

ARCHITECT: WILLIAM H. WATT, HANNAH
CONTRACT: WILLIAM H. WATT, HANNAH
PROJECT: 1322 EAST 12TH STREET, SUITE 202

ARCHITECT: WILLIAM H. WATT, HANNAH
CONTRACT: WILLIAM H. WATT, HANNAH
PROJECT: 1322 EAST 12TH STREET, SUITE 202

ARCHITECT: WILLIAM H. WATT, HANNAH
CONTRACT: WILLIAM H. WATT, HANNAH
PROJECT: 1322 EAST 12TH STREET, SUITE 202

ARCHITECT: WILLIAM H. WATT, HANNAH
CONTRACT: WILLIAM H. WATT, HANNAH
PROJECT: 1322 EAST 12TH STREET, SUITE 202

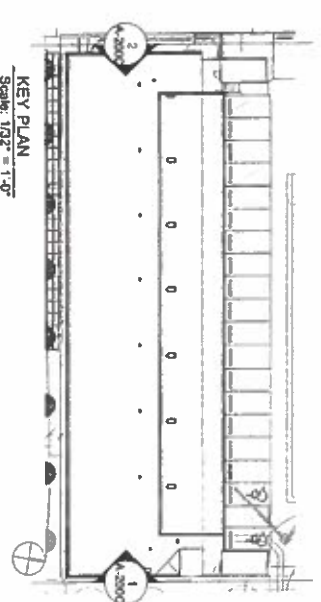
ARCHITECT: WILLIAM H. WATT, HANNAH
CONTRACT: WILLIAM H. WATT, HANNAH
PROJECT: 1322 EAST 12TH STREET, SUITE 202

ARCHITECT: WILLIAM H. WATT, HANNAH
CONTRACT: WILLIAM H. WATT, HANNAH
PROJECT: 1322 EAST 12TH STREET, SUITE 202

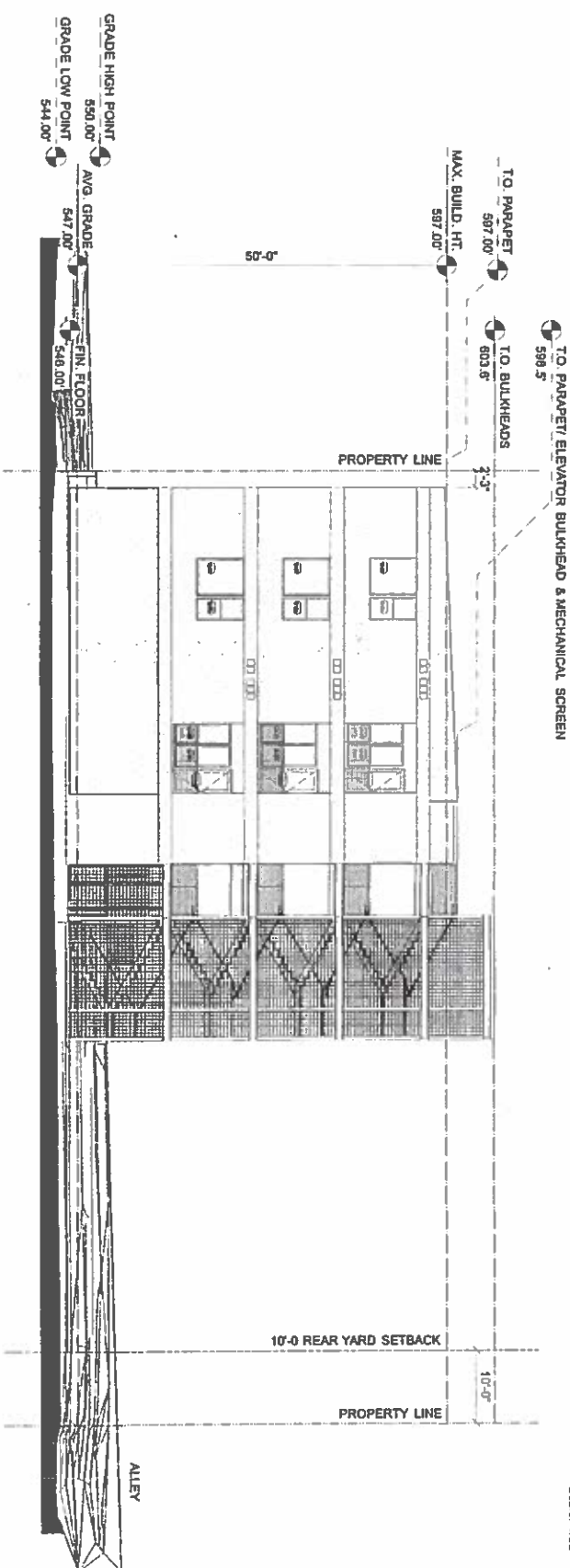
ARCHITECT: WILLIAM H. WATT, HANNAH
CONTRACT: WILLIAM H. WATT, HANNAH
PROJECT: 1322 EAST 12TH STREET, SUITE 202

ARCHITECT: WILLIAM H. WATT, HANNAH
CONTRACT: WILLIAM H. WATT, HANNAH
PROJECT: 1322 EAST 12TH STREET, SUITE 202

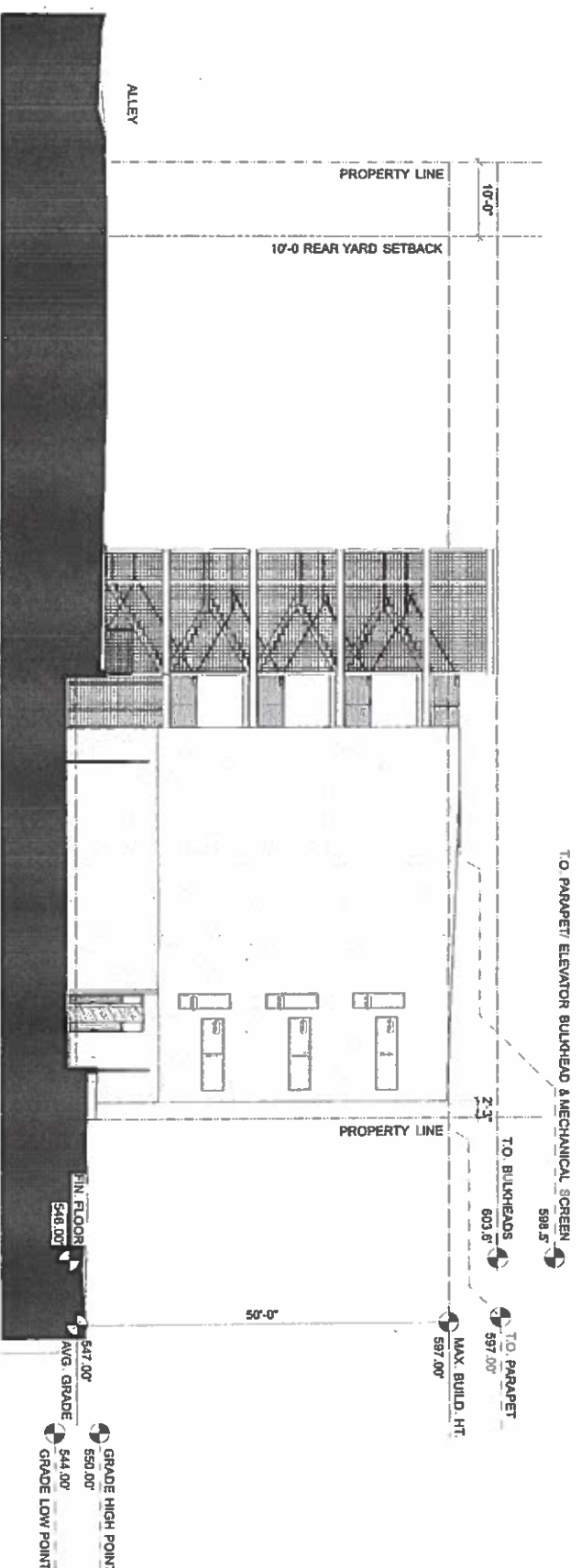
ARCHITECT: WILLIAM H. WATT, HANNAH
CONTRACT: WILLIAM H. WATT, HANNAH
PROJECT: 1322 EAST 12TH STREET, SUITE 202



KEY PLAN
Scale: 1/32" = 1'-0"



1 EAST ELEVATION
Scale: 3/32" = 1'-0"



2 WEST ELEVATION
Scale: 3/32" = 1'-0"

RELEASE OF THIS INFORMATION DOES NOT CONSTITUTE A
WARRANTY OF ANY KIND, NOR DOES IT CONSTITUTE A
RELEASE OF LIABILITY. THE ENGINEER OF RECORD IS SOLELY
RESPONSIBLE FOR THE COMPLETENESS, ACCURACY AND ADEQUACY
OF HIS/HER SUBMITTAL, WHETHER OR NOT THE APPLICATION IS
REVIEWED FOR CODE COMPLIANCE BY CITY ENGINEERS.

SITE NAME: 1322 EAST 12TH STREET, SUITE 202
SHEET: 2 OF 2
DATE: 10-1-16
APPROVED BY: [Signature]
CONTRACT: 1322 EAST 12TH STREET, SUITE 202
PROJECT: 1322 EAST 12TH STREET, SUITE 202
SCALE: 3/32" = 1'-0"

SP-2016-0469C



NOT FOR CONSTRUCTION
1322 EAST
12TH STREET
AUSTIN, TEXAS
SP-2016-0469C
BUILDING PERMIT SET -
NOT FOR CONSTRUCTION

REVISION	DATE	DESCRIPTION
1	10-1-16	ISSUED FOR PERMIT
2	10-1-16	ISSUED FOR PERMIT
3	10-1-16	ISSUED FOR PERMIT
4	10-1-16	ISSUED FOR PERMIT
5	10-1-16	ISSUED FOR PERMIT
6	10-1-16	ISSUED FOR PERMIT
7	10-1-16	ISSUED FOR PERMIT
8	10-1-16	ISSUED FOR PERMIT
9	10-1-16	ISSUED FOR PERMIT
10	10-1-16	ISSUED FOR PERMIT

SP-2016-0469C
A-200C
25 of 26

Q5. Response - City Staff