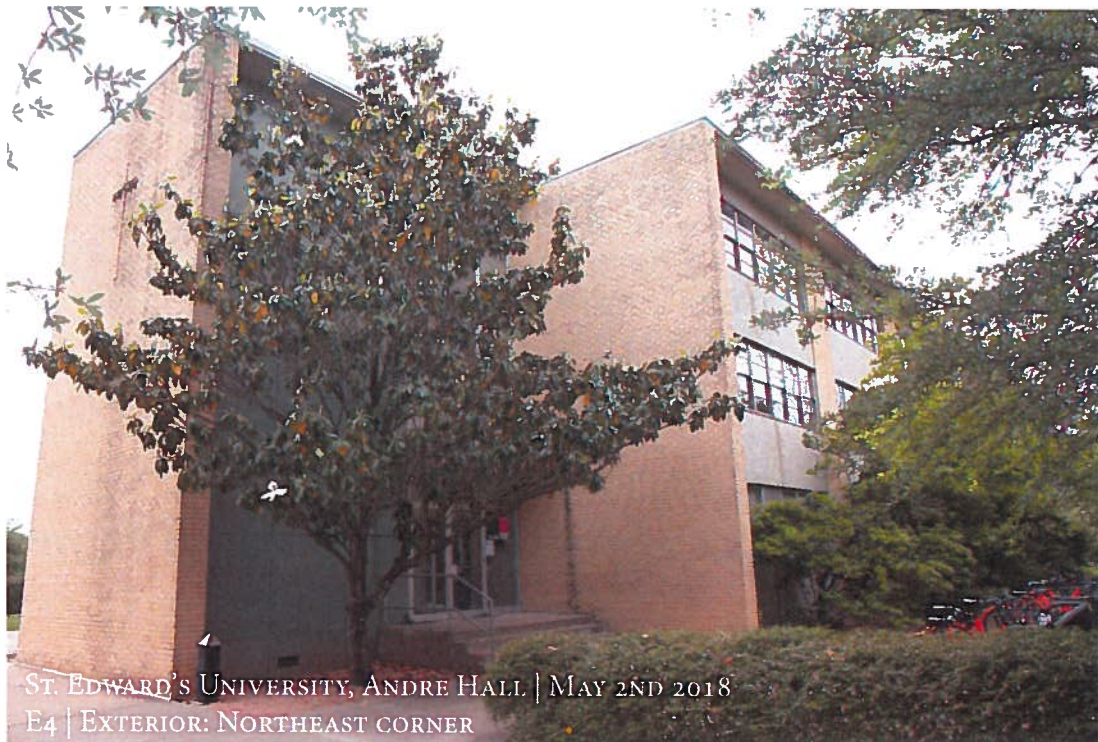
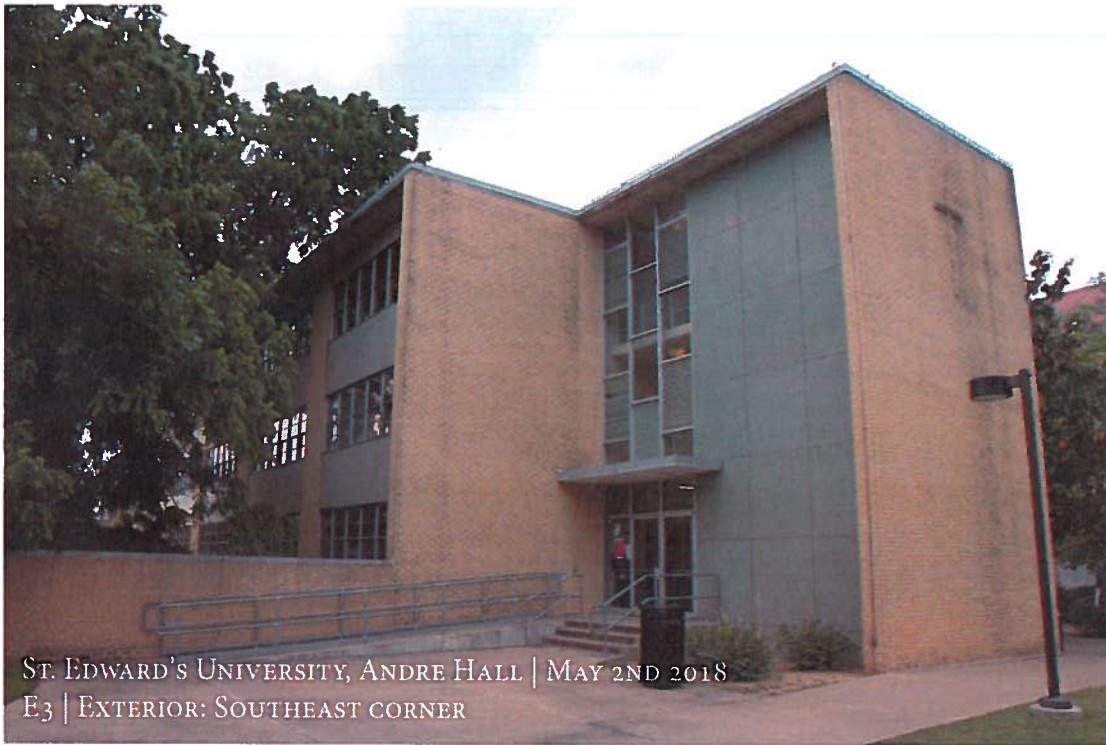


# St. Edward's University - Andre Hall

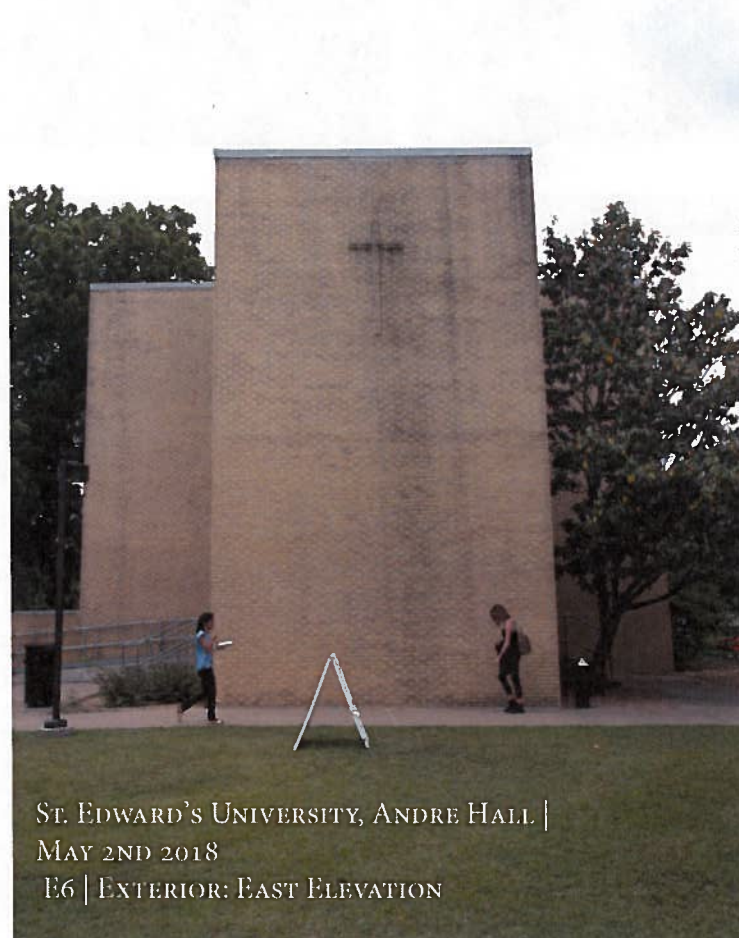
Application for Certificate of Appropriateness  
for a building older than 40 years old



## Exterior Color Photographs



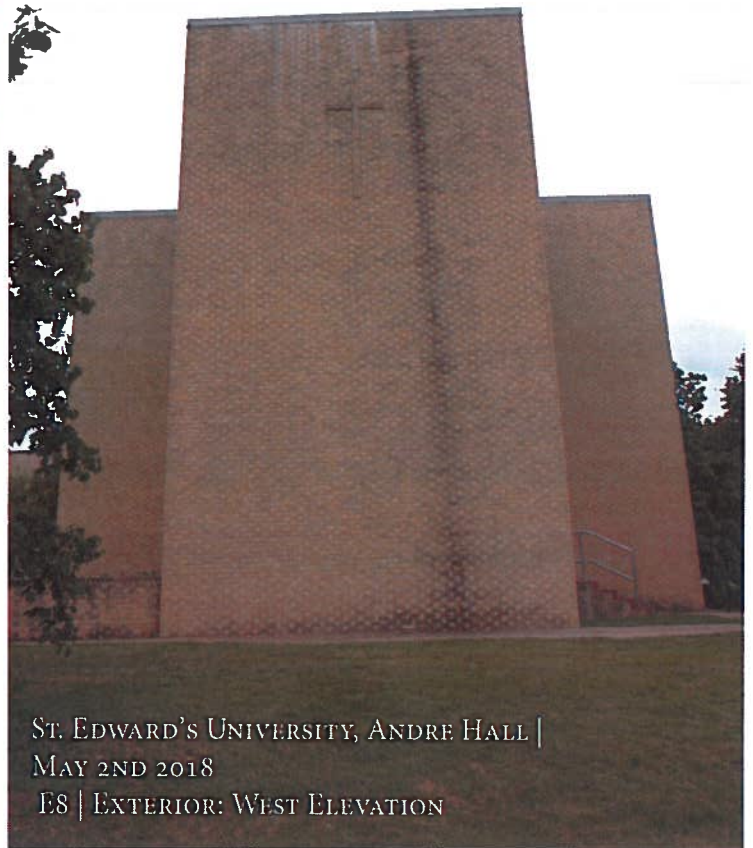




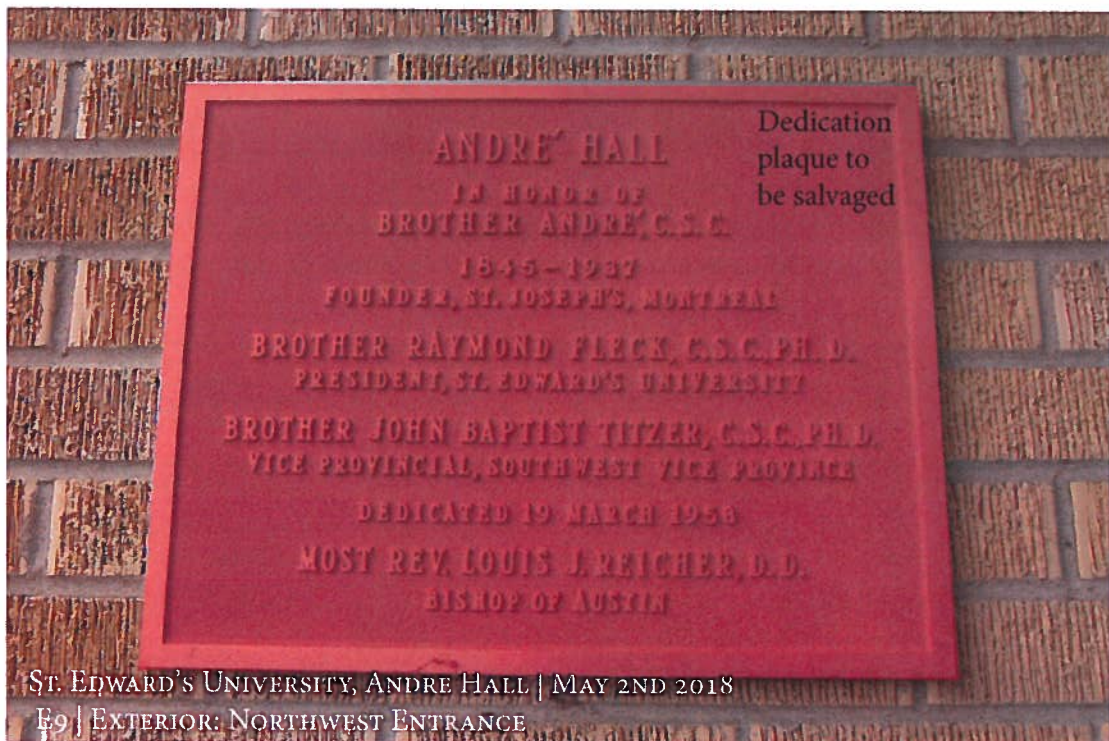




ST. EDWARD'S UNIVERSITY, ANDRE HALL |  
MAY 2ND 2018  
E7 | EXTERIOR: NORTHWEST ENTRANCE



ST. EDWARD'S UNIVERSITY, ANDRE HALL |  
MAY 2ND 2018  
E8 | EXTERIOR: WEST ELEVATION



ST. EDWARD'S UNIVERSITY, ANDRE HALL | MAY 2ND 2018  
E9 | EXTERIOR: NORTHWEST ENTRANCE

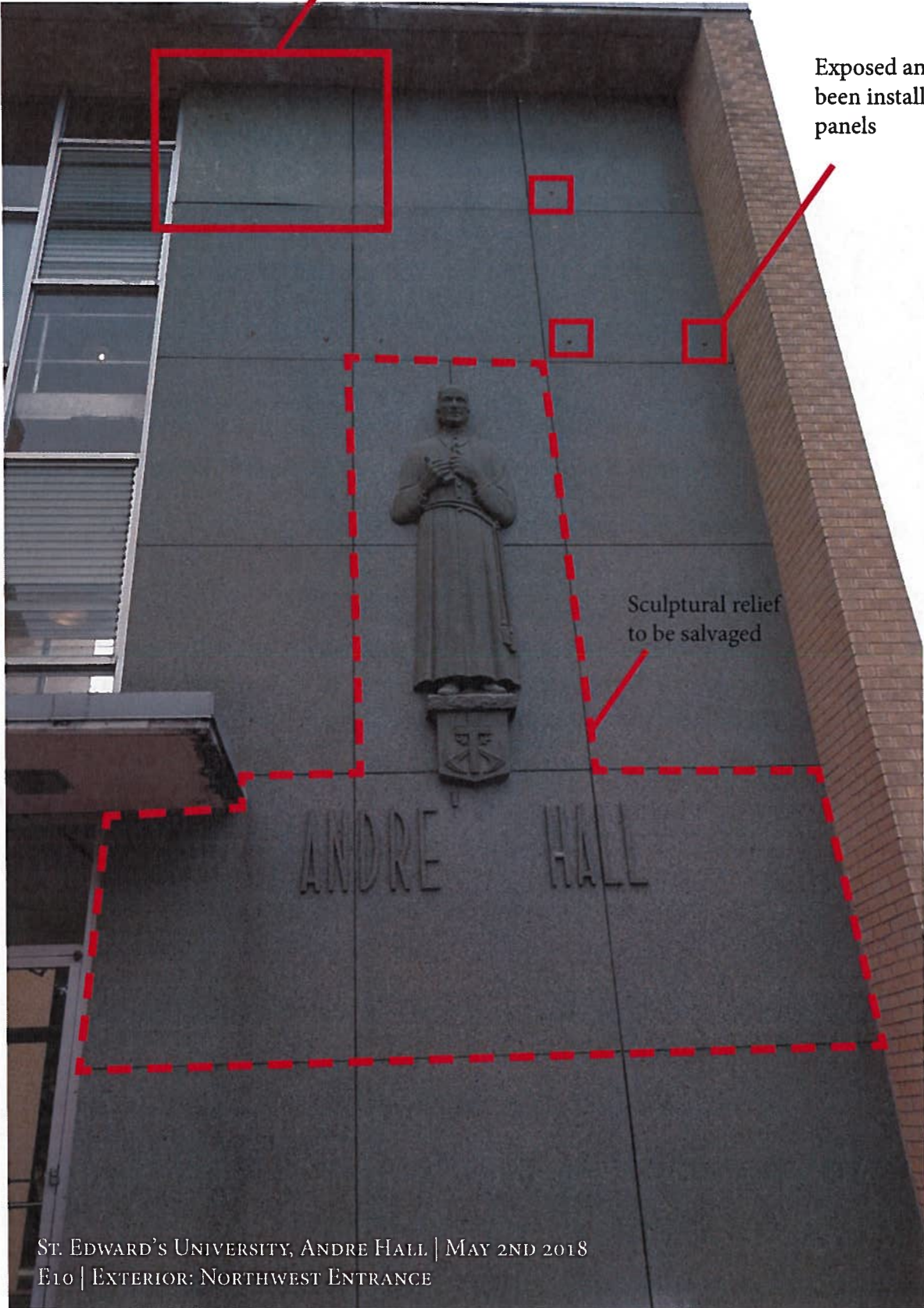


Original terazzo panel has been replaced  
with painted plywood painted

Exposed anchors have  
been installed at loose  
panels

Sculptural relief  
to be salvaged

ST. EDWARD'S UNIVERSITY, ANDRE HALL | MAY 2ND 2018  
E10 | EXTERIOR: NORTHWEST ENTRANCE







ST. EDWARD'S UNIVERSITY, ANDRE HALL | MAY 2ND 2018  
E11 | EXTERIOR: NORTHWEST ENTRANCE



ST. EDWARD'S UNIVERSITY, ANDRE HALL | MAY 2ND 2018  
E12 | EXTERIOR: SOUTHWEST ENTRY, OPENING IN A TERRAZZO PANEL





ST. EDWARD'S UNIVERSITY, ANDRE HALL | MAY 2ND 2018  
E13 | EXTERIOR: NORTHWEST ENTRY, NOTE ORGANIC GROWTH/IMPROPER DRAINAGE



ST. EDWARD'S UNIVERSITY, ANDRE HALL | MAY 2ND 2018  
E14 | EXTERIOR: NORTHWEST ENTRY, NOTE ORGANIC GROWTH/ IMPROPER DRAINAGE





ST. EDWARD'S UNIVERSITY, ANDRE HALL | MAY 2ND 2018  
E15 | EXTERIOR: SOUTH ELEVATION, CONDUIT THROUGHOUT EXTERIOR OF THE BUILDING



ST. EDWARD'S UNIVERSITY, ANDRE HALL | MAY 2ND 2018  
E16 | EXTERIOR: SOUTH ELEVATION, ACM IN THE WATERPROOFING BEHIND PANELS





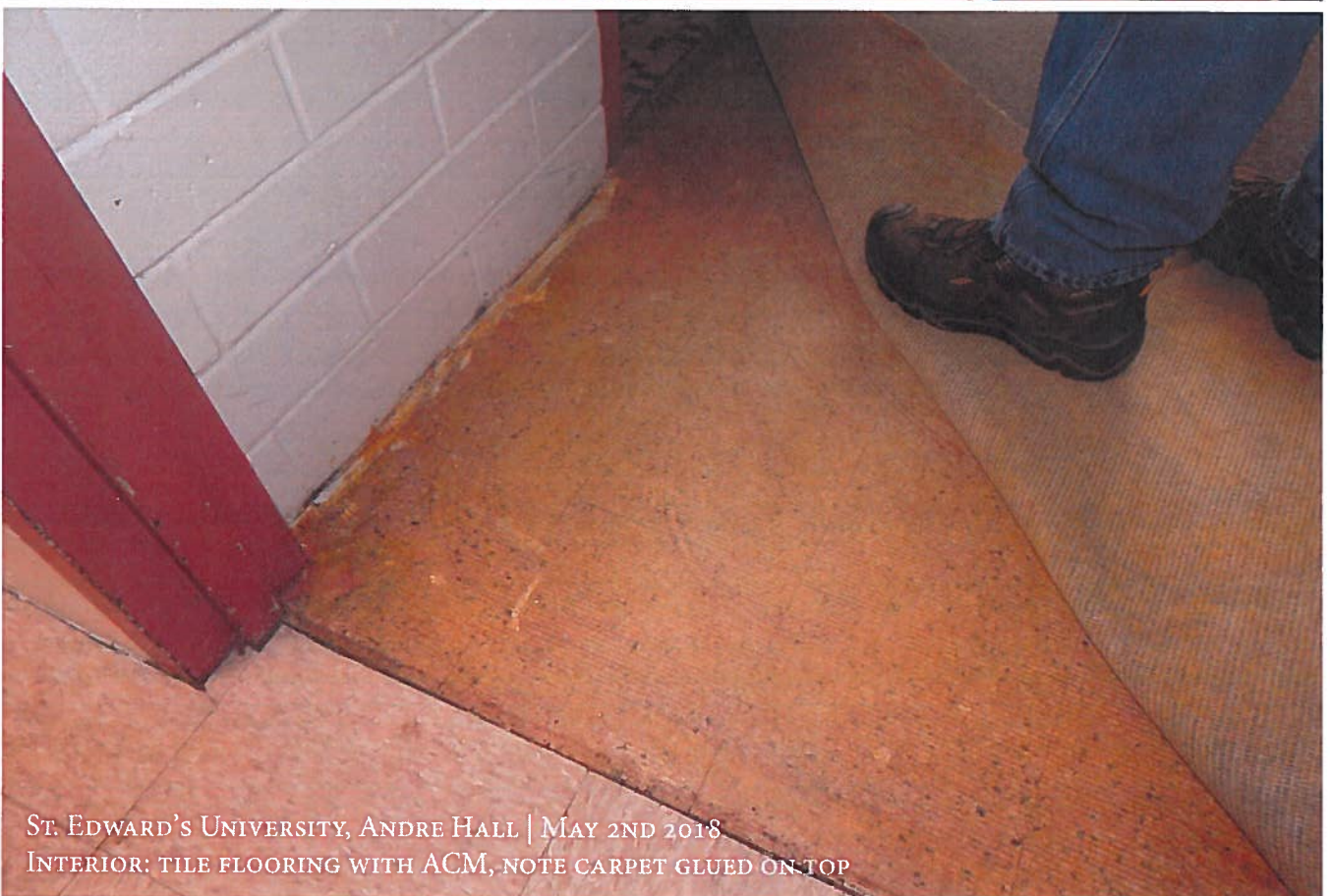
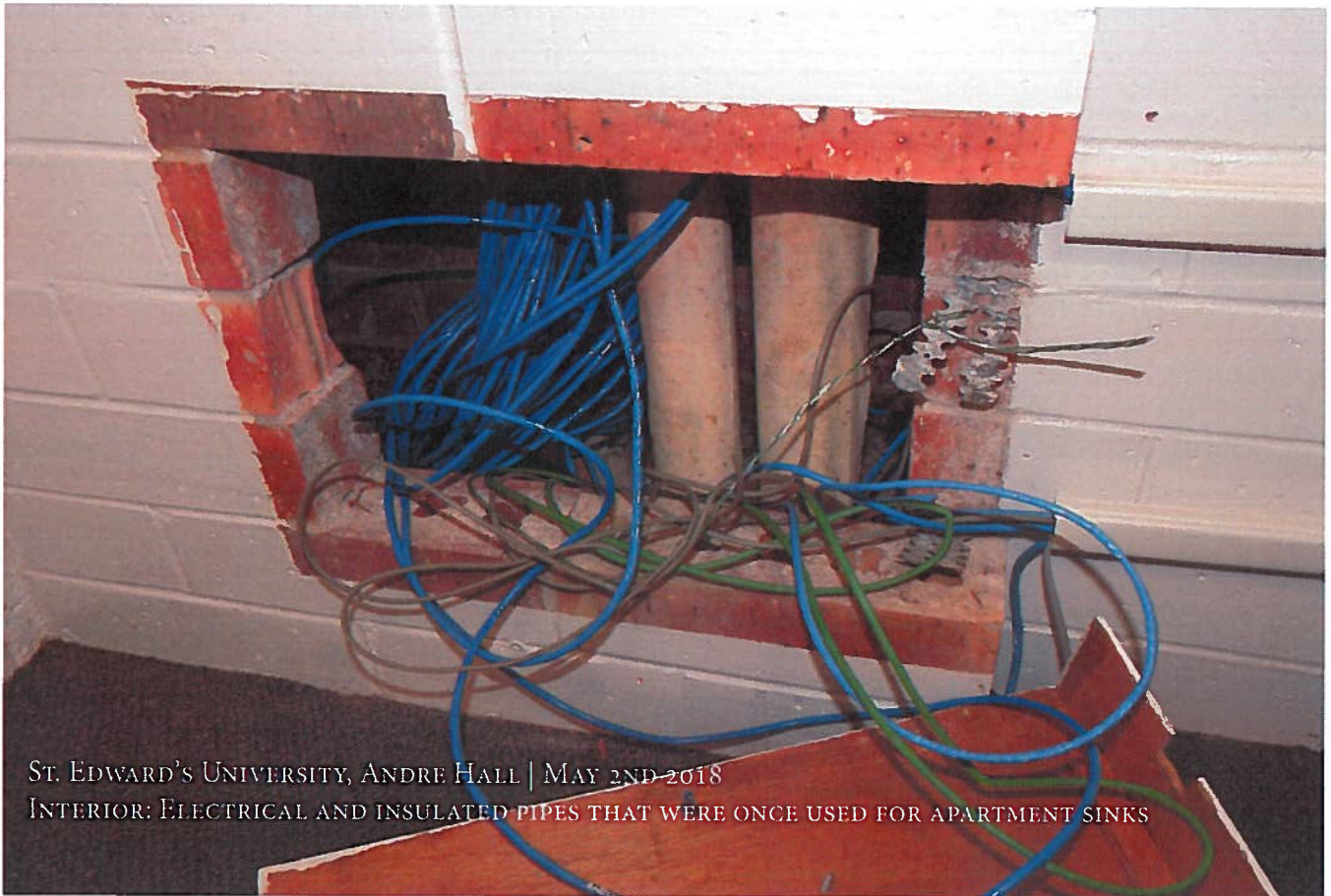
ST. EDWARD'S UNIVERSITY, ANDRE HALL | MAY 2ND 2018  
E17 | EXTERIOR: NORTHWEST ENTRY, NOTE ORGANIC  
GROWTH/ IMPROPER DRAINAGE



ST. EDWARD'S UNIVERSITY, ANDRE HALL | MAY 2ND 2018  
E18 | EXTERIOR: NORTH ELEVATION, DISPLACED PANELS



## Interior Color Photographs







ST. EDWARD'S UNIVERSITY, ANDRE HALL | MAY 2ND 2018

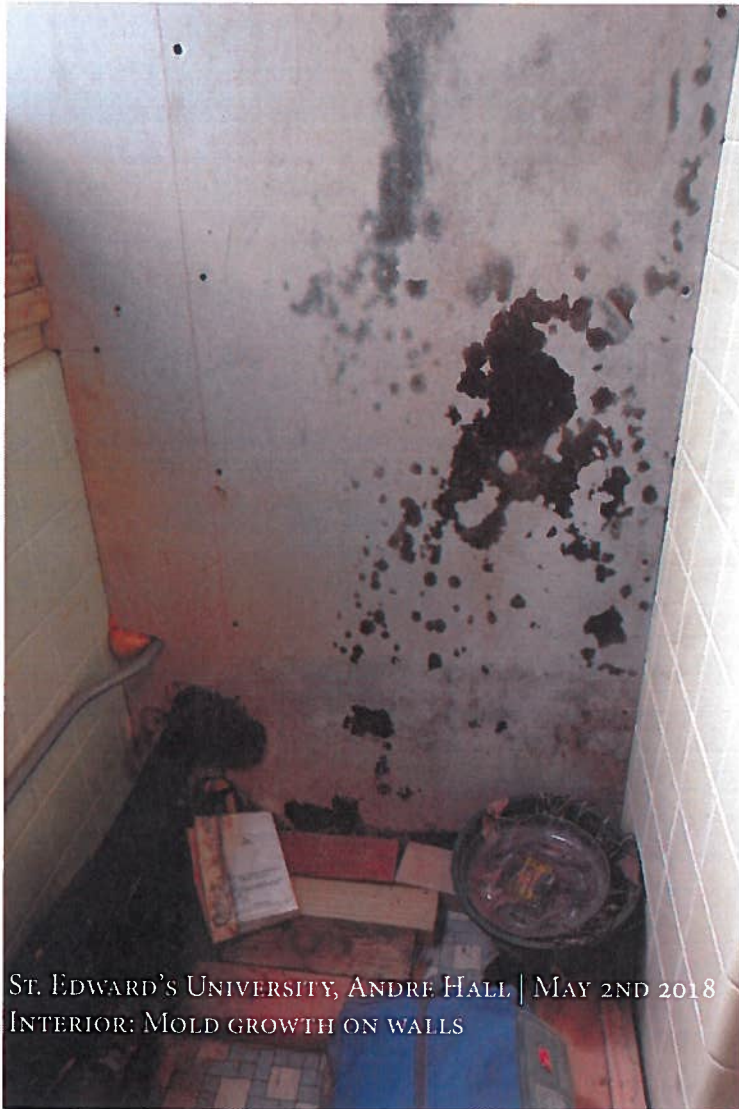
INTERIOR: ROOF LEAKS ARE PREVALENT THROUGHOUT THE BUILDING



ST. EDWARD'S UNIVERSITY, ANDRE HALL | MAY 2ND 2018

INTERIOR: ROOF LEAKS ARE PREVALENT THROUGHOUT THE BUILDING





ST. EDWARD'S UNIVERSITY, ANDRE HALL | MAY 2ND 2018  
INTERIOR: MOLD GROWTH ON WALLS



ST. EDWARD'S UNIVERSITY, ANDRE HALL | MAY 2ND 2018  
INTERIOR: EXPOSED PIPES WERE ADDED 15 YEARS AGO





ST. EDWARD'S UNIVERSITY, ANDRE HALL | MAY 2ND 2018  
INTERIOR: EXPOSED PIPES WERE ADDED 15 YEARS AGO

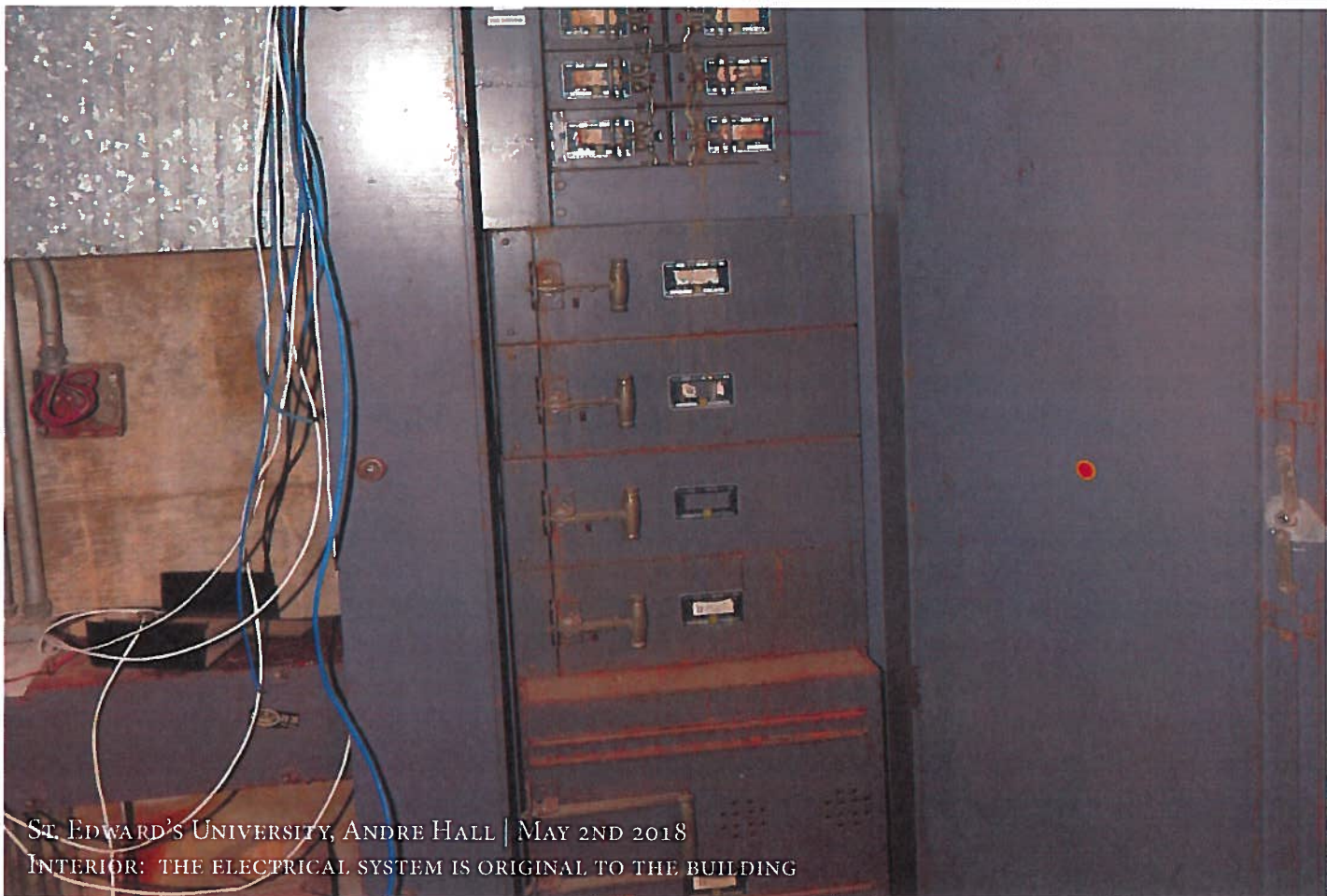


ST. EDWARD'S UNIVERSITY, ANDRE HALL | MAY 2ND 2018  
INTERIOR: CONCRETE STRUCTURAL COLUMN SHOWING SIGNS OF CRACKING





ST. EDWARD'S UNIVERSITY, ANDRE HALL | MAY 2ND 2018  
INTERIOR: THE ELECTRICAL SYSTEM IS ORIGINAL TO THE BUILDING



ST. EDWARD'S UNIVERSITY, ANDRE HALL | MAY 2ND 2018  
INTERIOR: THE ELECTRICAL SYSTEM IS ORIGINAL TO THE BUILDING