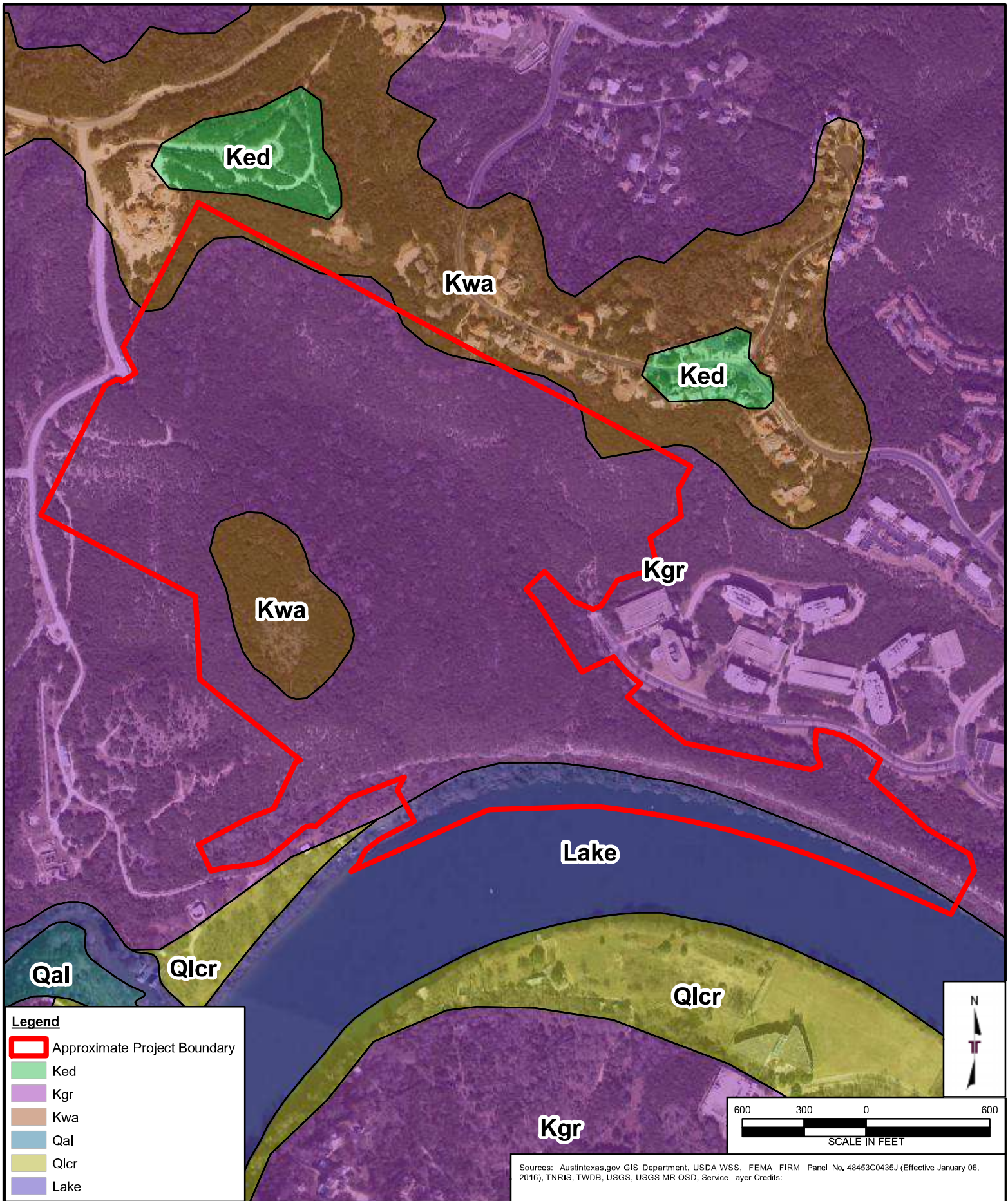


Project Mng'r:	MR
Drawn By:	Terracon
Checked By:	CG
Approved By:	AS
Project No.:	96187142
Scale:	AS SHOWN
File No.:	96187142
Date:	Jun 15, 2018

Terracon
Consulting Engineers & Scientists
 5307 INDUSTRIAL OAKS BLVD. - #160 AUSTIN, TX 78735
 PH. (512) 442-1122 FAX. (512) 442-1181

Site Specific Geologic Map with 2-ft Topography	EXHIBIT
Camelback Tract	1.0
Bridgepoint Parkway and Coldwater Canyon Parkway	
Austin, Travis County, Texas	



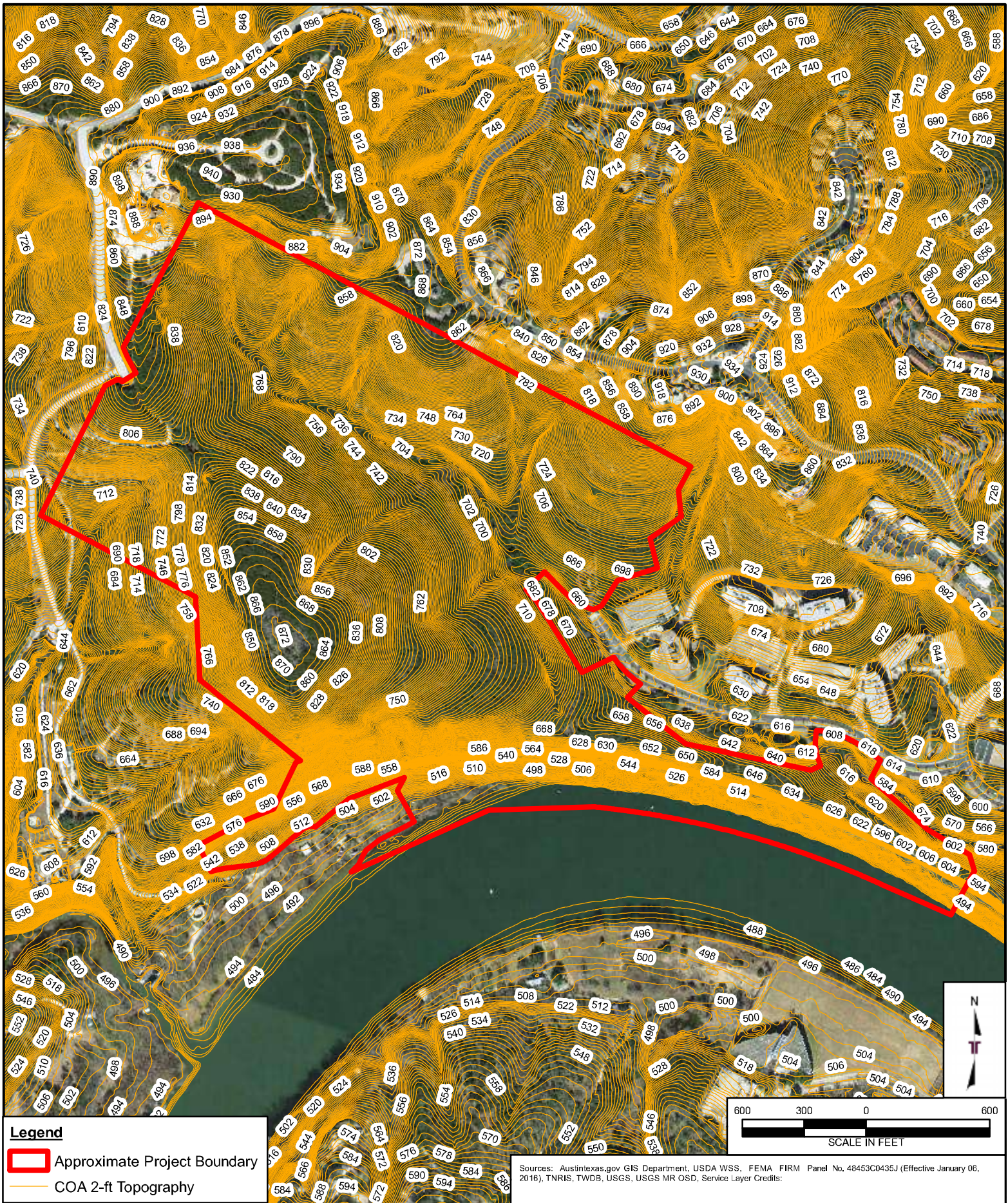
Project Mngr:	MR
Drawn By:	Terracon
Checked By:	CG
Approved By:	AS

Project No:	96187142
Scale:	AS SHOWN
File No:	96187142
Date:	Jun 15, 2018

Terracon
Consulting Engineers & Scientists
 5307 INDUSTRIAL OAKS BLVD. - #160 AUSTIN, TX 78735
 PH. (512) 442-1122 FAX. (512) 442-1181

Site Specific Geologic Map
Camelback Tract
Bridgepoint Parkway and Coldwater Canyon Parkway
Austin, Travis County, Texas

EXHIBIT
1.1



Project Mgr:	MR	Project No:	96187142
Drawn By:	Terracon	Scale:	AS SHOWN
Checked By:	CG	File No:	96187142
Approved By:	AS	Date:	Jun 15, 2018

Terracon
Consulting Engineers & Scientists
5307 INDUSTRIAL OAKS BLVD. - #160 AUSTIN, TX 78735
PH. (512) 442-1122 FAX. (512) 442-1181

Site Specific 2-ft Topography Map
Camelback Tract
Bridgepoint Parkway and Coldwater Canyon Parkway
Austin, Travis County, Texas

EXHIBIT
1.2