



The Norwood Project



Presentation to the City of Austin
Parks & Recreation Board
September 25, 2018

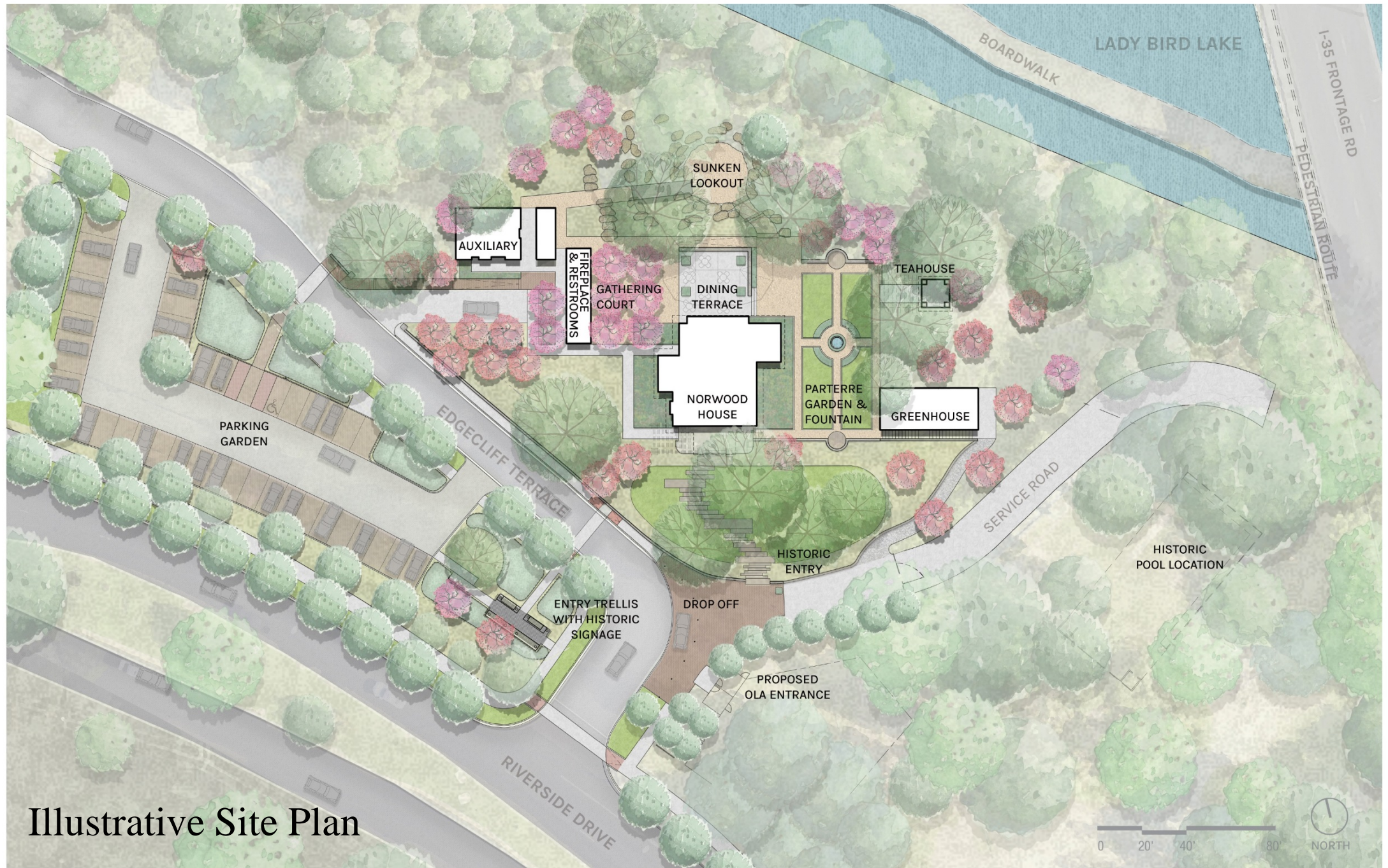
Presented by:
D'Anne Williams, Parks and Recreation
Teri O'Glee, Norwood Foundation
Cameron Campbell, Landscape Architect

The Norwood House
circa 1925
courtesy Austin History Center

Phase 1: completed !

The Norwood Project





Illustrative Site Plan



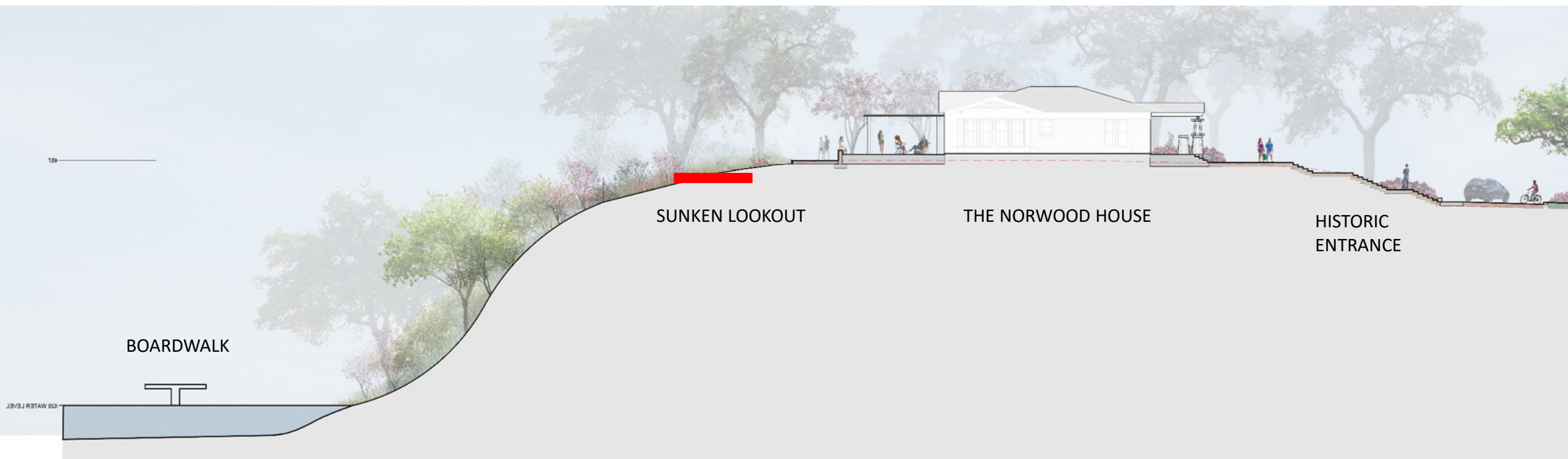
View of the House from the East Park Entrance



View of the back of the house from the east side gardens



View of the dining terrace from the rear west side



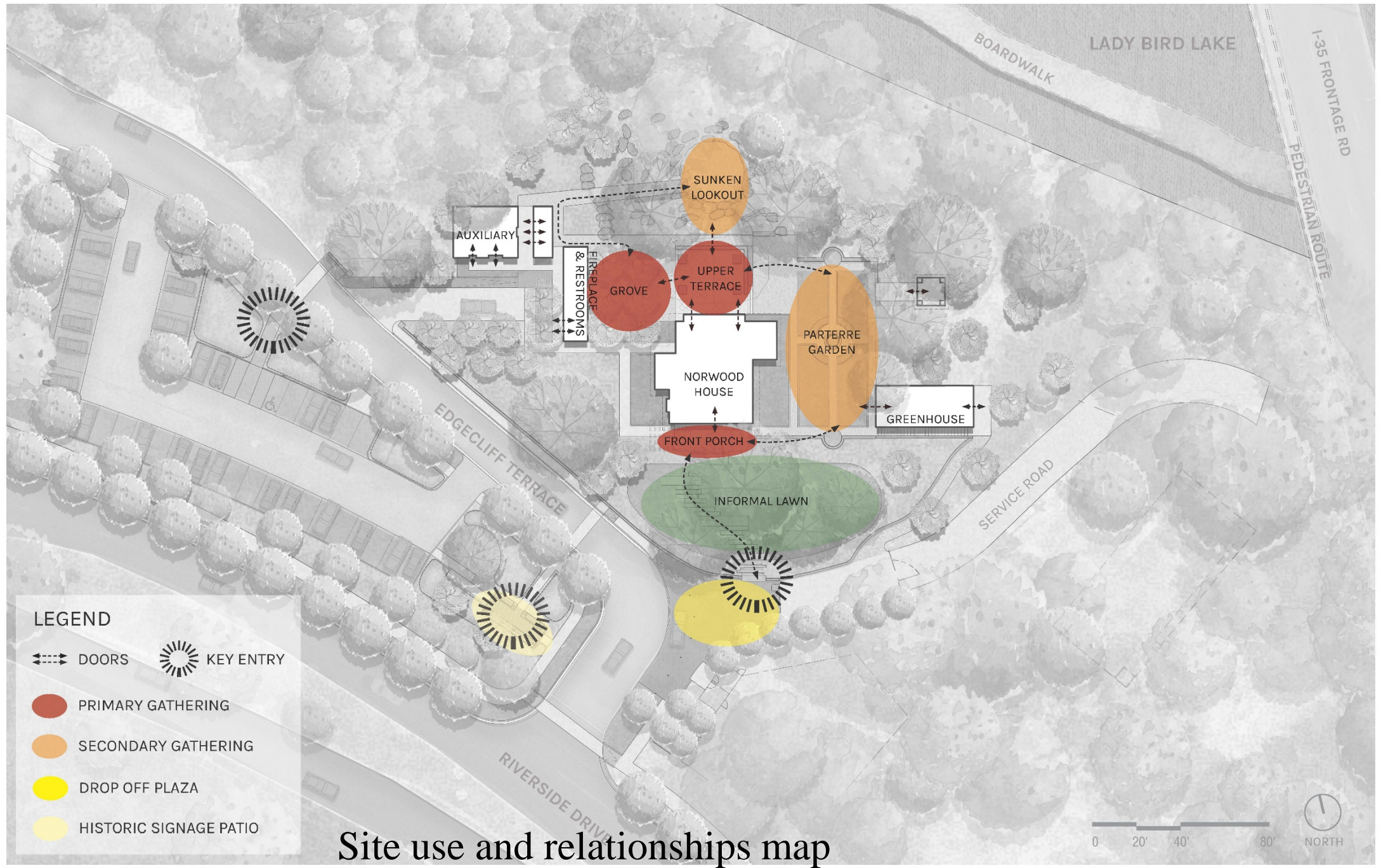
Elevations of the site and relationship to the Boardwalk



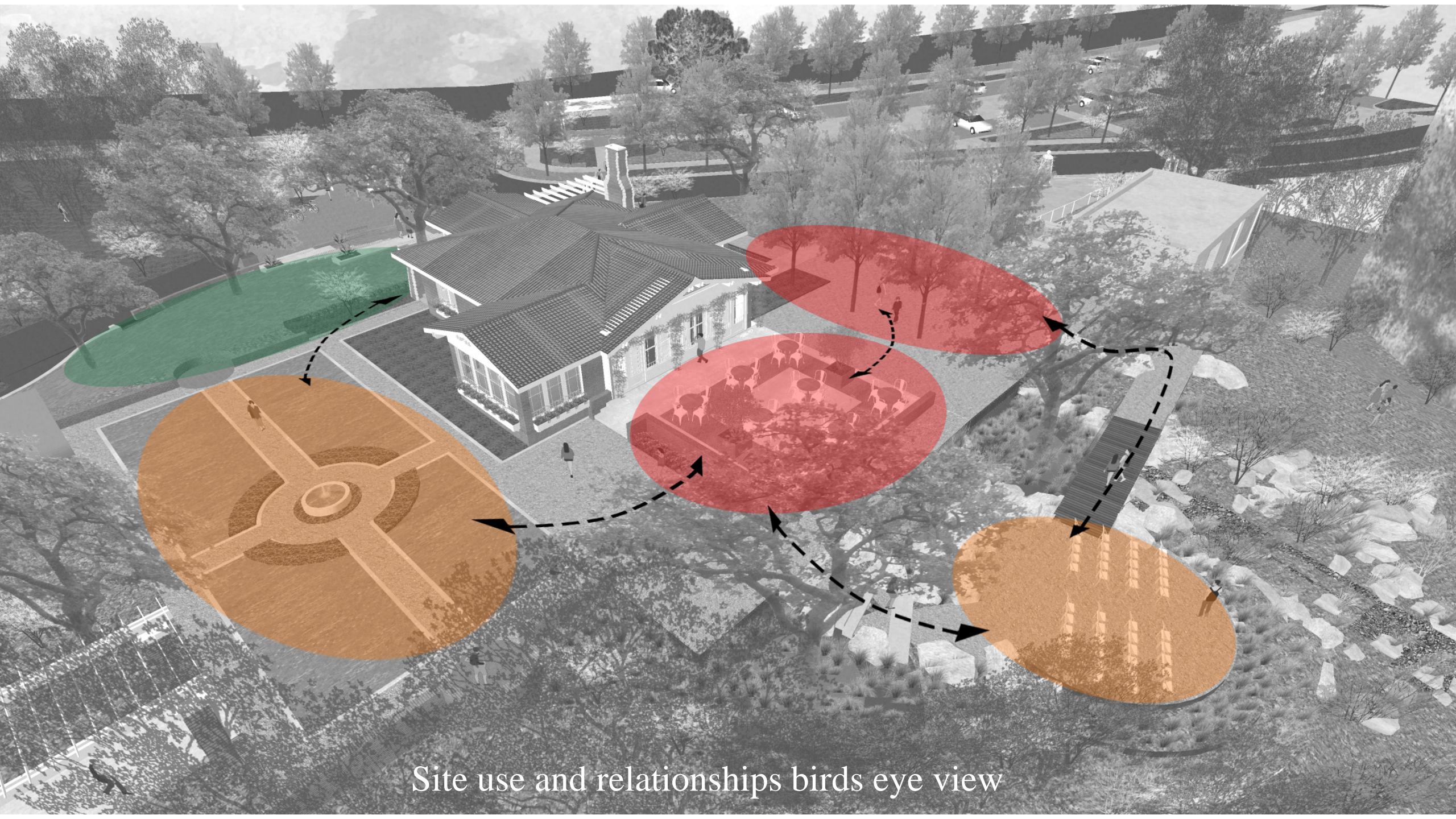
View of the dining terrace and sunken lookout



View of the bridge to the sunken lookout over a raingarden



Site use and relationships map



Site use and relationships birds eye view

Phase 2: in progress

ESTIMATED SCHEDULE:

Fundraising

The Norwood Project



*Early morning view from
the Norwood House*

