

Q16-2018-0004



**Monument Sign Variance Request for  
Richard T. Hopkins Behavioral Health Building  
Home to Psychiatric Emergency Services, a  
Walk-In Mental Health Urgent Care Clinic**

October 8, 2018



# Anne Nagelkirk

Director of Communications  
Integral Care



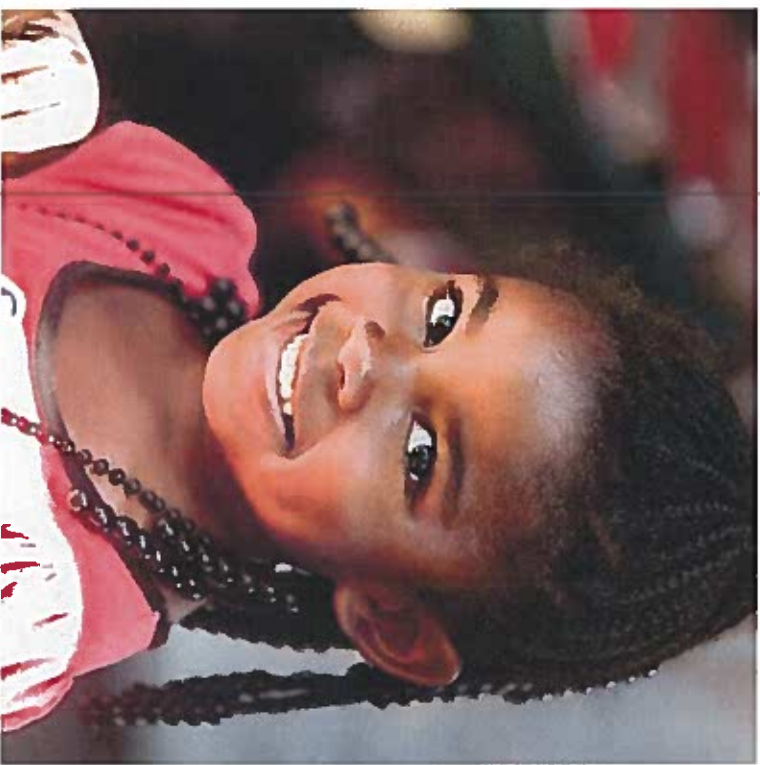
**Integral  
Care**

# About Integral Care

Integral Care supports adults and children living with:

- **mental illness**
- **substance use disorder**
- **intellectual and developmental disabilities**

We help people build health and well-being so everyone has the foundation to reach their full potential.





Founded in **1967**, we are the local mental health and intellectual and developmental disability authority for Travis County.

Last year, Integral Care served almost **26,000** people.

 Integral Care

# Integral Care's Crisis Services

Integral Care offers mental health crisis support 24 hours a day, 7 days a week – on the phone and in the community. Our crisis services help people recover from a mental health crisis and rebuild their well-being.



A helpline for anyone who needs immediate emotional support



Tools and resources to prevent suicide



Teams that go anywhere someone needs help



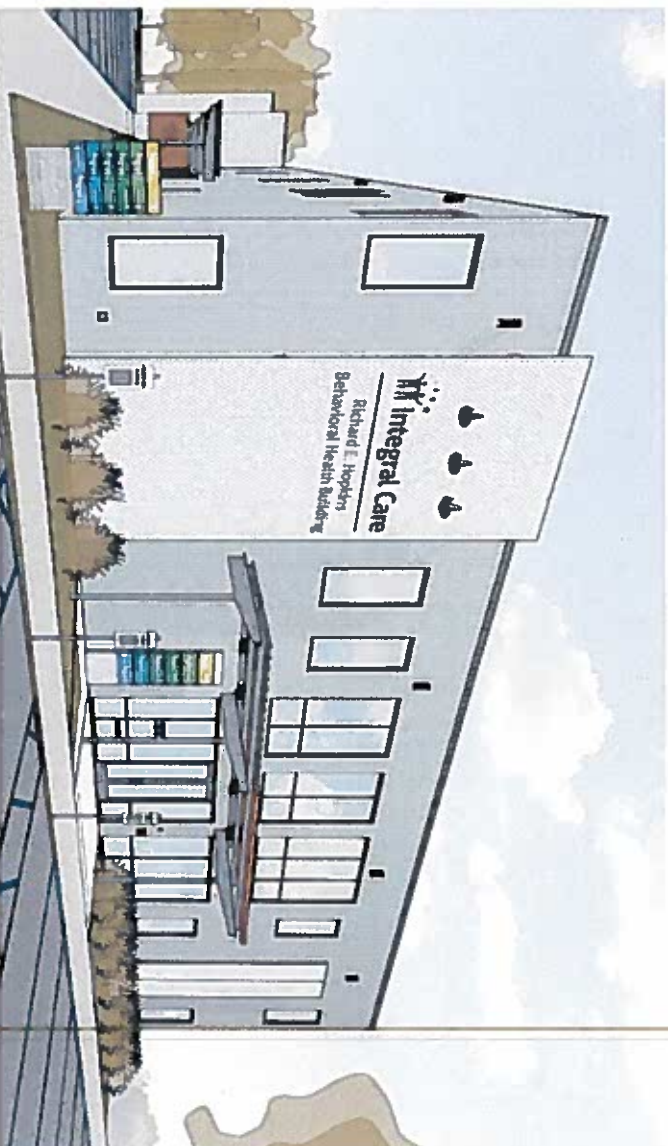
Mental Health Urgent Care

# Importance of Wayfinding Signage



- Can promote healing
- Can improve patient care and medical outcomes
- Can cause anxiety, stress and fear

# Our Goals



- Ensure people can safely and quickly access the health care they need to improve their well-being
- Ensure the sign is visible – day and night, traveling east and west

# Albert Morales

Design & Project Management  
Capital Architectural Signs





## Our Hardships

- Unique healthcare services at property with evening hours
- Visual barriers (natural landscape/ trees, bus stop)
- Property line set back 30 ft. from street
- Curve of Airport Blvd. at property



# Proposed Removable Monument Sign

1. Double-sided aluminum cabinet all copy is machine ruled from laser.

2. Internally illuminated white acrylic push through logo with 1/2" projection.

3. Internally illuminated address backed with vinylrylic inset 1/8" or thickness of cabinet.

Notes:  
 A. Concrete Foundation: 1-5" plainset concrete, epoxy grade, -1" O.C. direct embed with #4 rebar @ 12" O.C. - 2'-0" long with #4 rebar @ 18" O.C. T & R, each way.

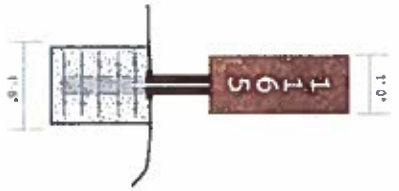
B. Illumination: bright white LEDs mounted inside cabinet faces and return; connected to power supplies comes to run main elect call via conduit. Must coordinate prior to pricing of concrete form.

C. Finish/Color: Cabinet is noted to match Weathered carbon stainless steel. Logo and address numerals are white acrylic as noted in descriptions 2 and 3.

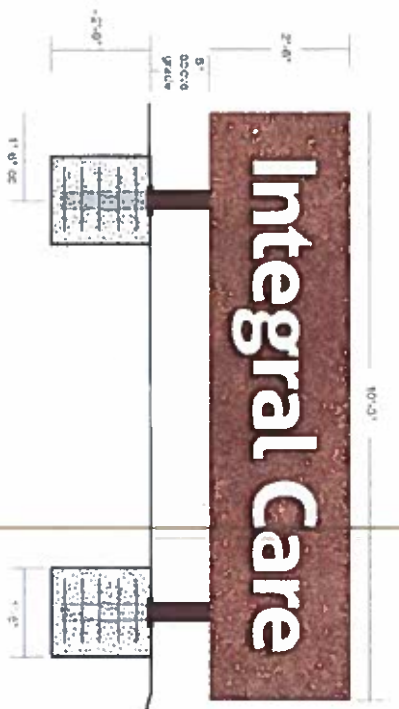
\*Cabinet face in the future shall appear as if several years exposure has taken place. All materials shall be guaranteed to match the actual process.



1 Reference Image  
Address Call Outs



2 Profile Section  
Scale: 1/2" = 1'-0"



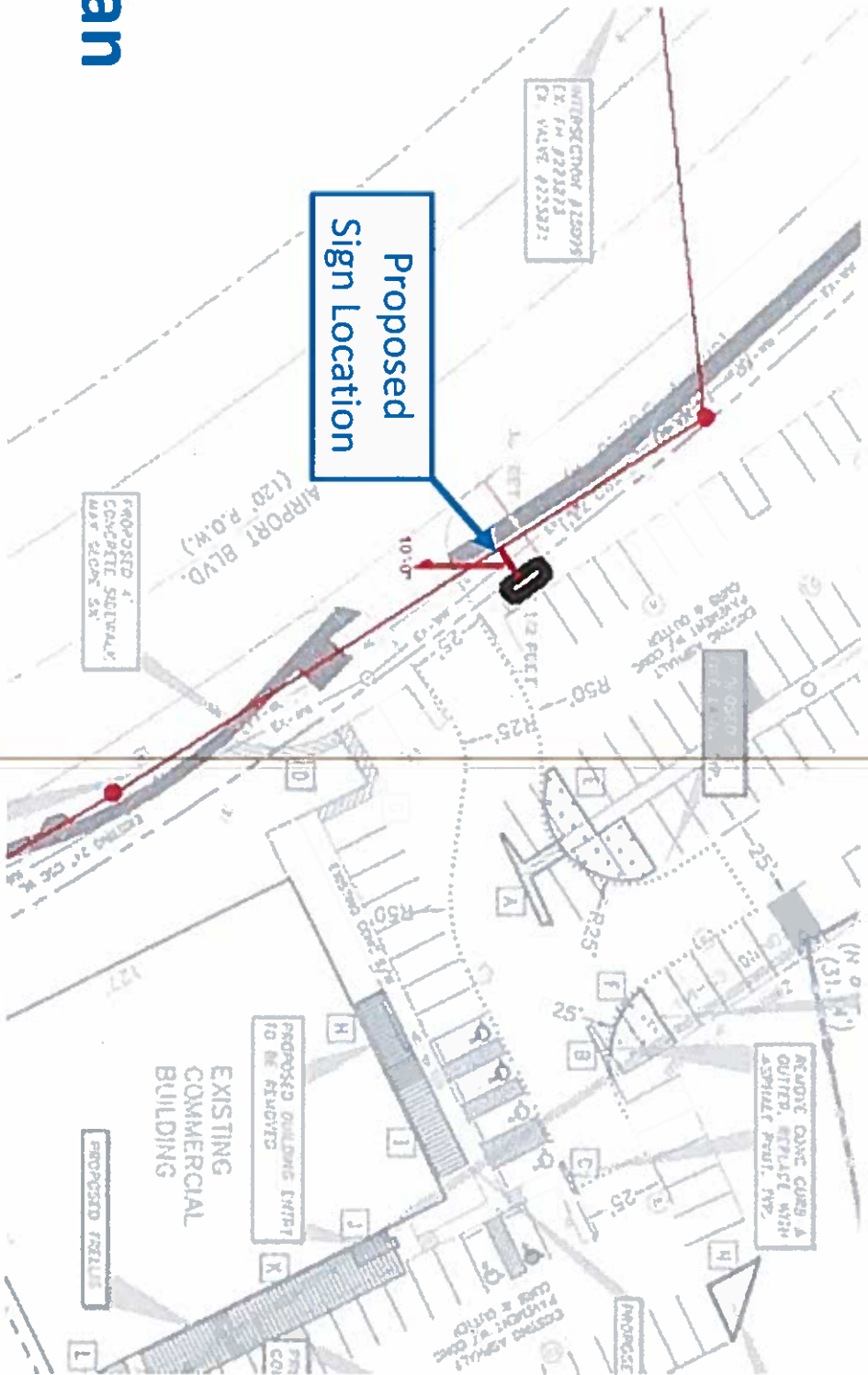
3 Elevation  
Scale: 1/2" = 1'-0"



4 Reference Image  
Push Through Letters



# Site Plan



# Proposed Sign Location (in yellow)

APPROVED BY  
AUSTIN ENERGY  
FOR BOA

DATE: \_\_\_\_\_

\_\_\_\_\_  
*[Signature]*

**REVIEWED**  
By Email Meeting on 11:07 am, Sep 03, 2018



Proposed  
Sign Location



**REVISED**  
27 AUGUST 18



**Proposed Sign Location (with utility lines)**



# Questions?



Thank You

