

B1

C16-2018-0005



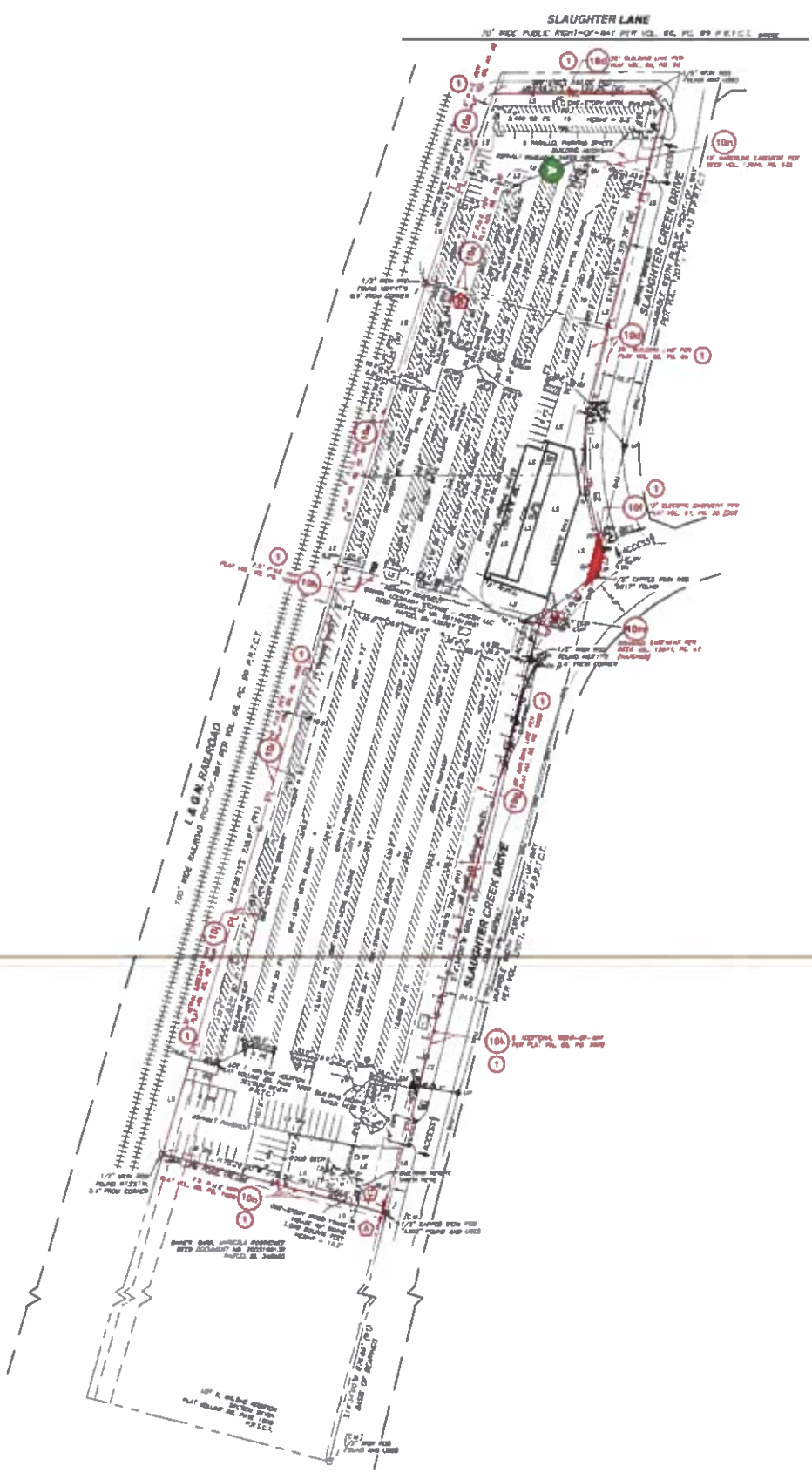
## Presentation

Extra Space Storage # 1795  
9910 Slaughter Creek Drive  
Austin, TX 78748

October 1, 2018

A 13'-4" x 22'-4" Pylon @ 60' OAH

Site Plan



Scale: 1" = 120'

Page 2 of 10

A 13'-4" x 22'-4" Pylon @ 60' OAH

Sign Setbacks



Scale: NTS

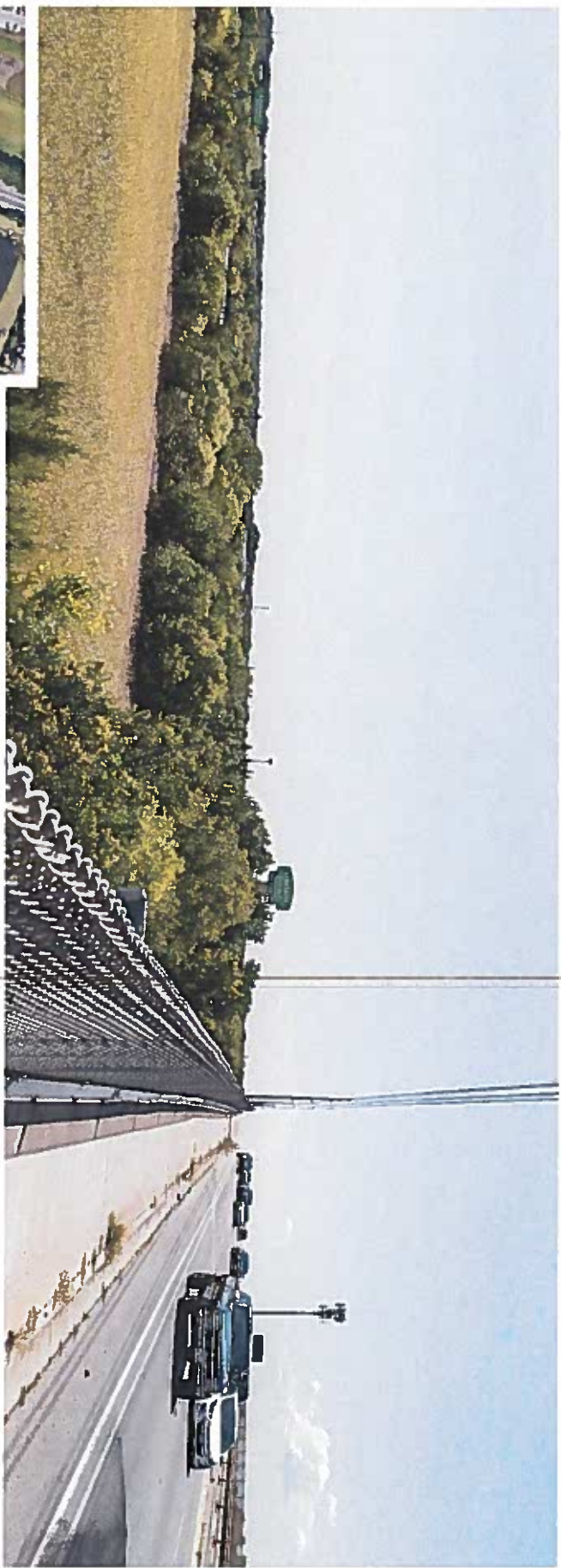
Page 3 of 10

Path of Travel



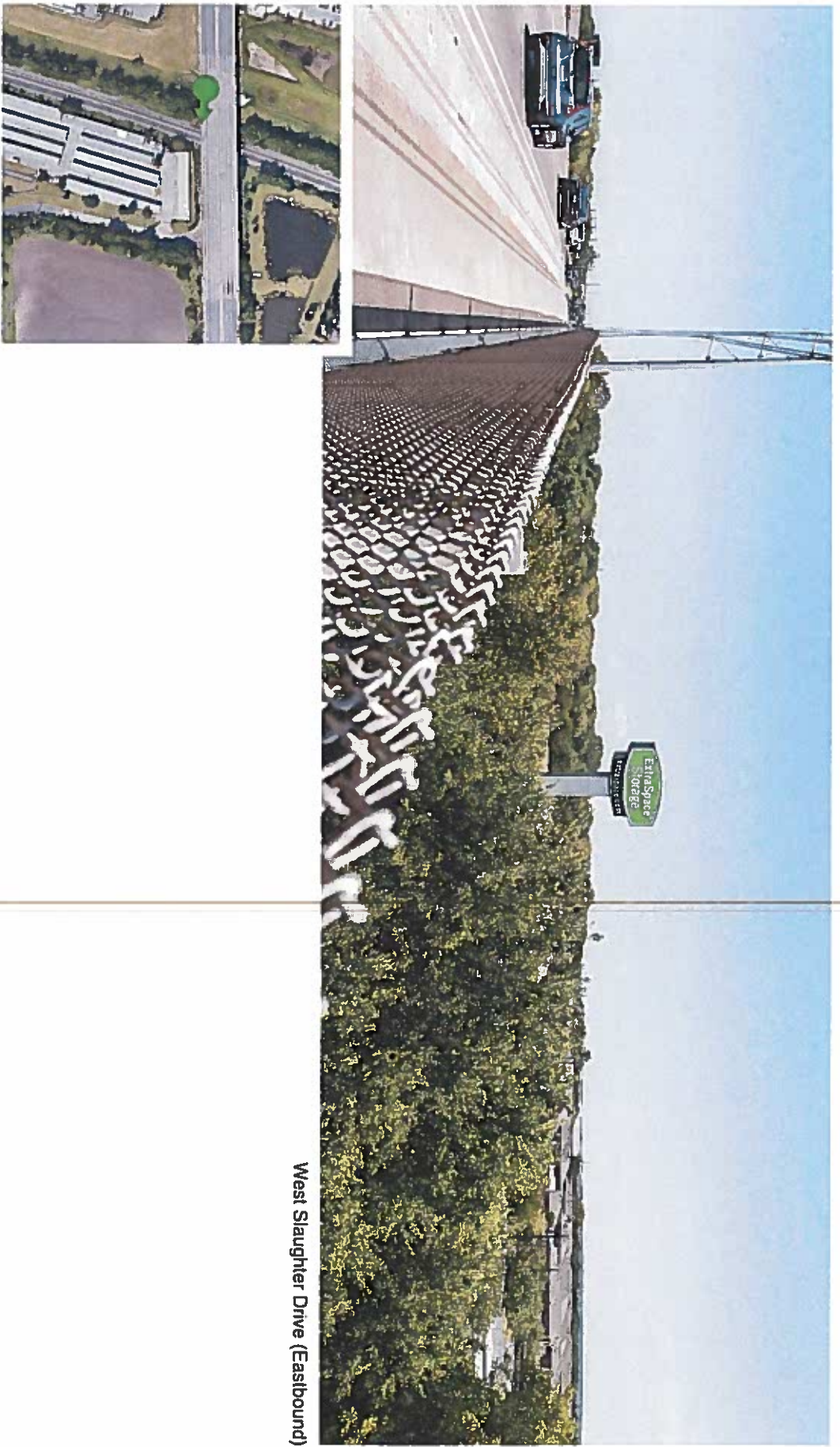
Scale: NTS

Page 4 of 10

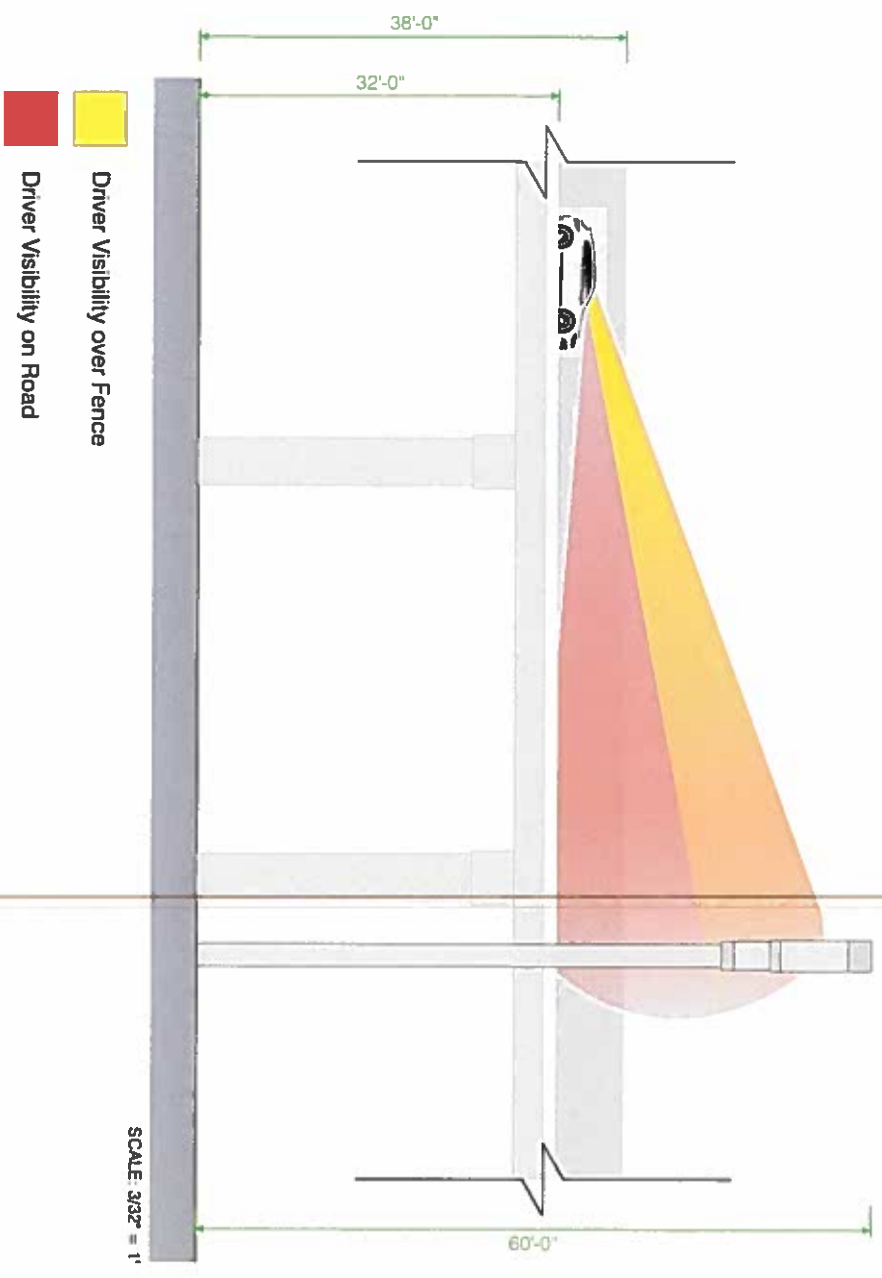


West Slaughter Drive (Westbound)





West Slaughter Drive (Eastbound)

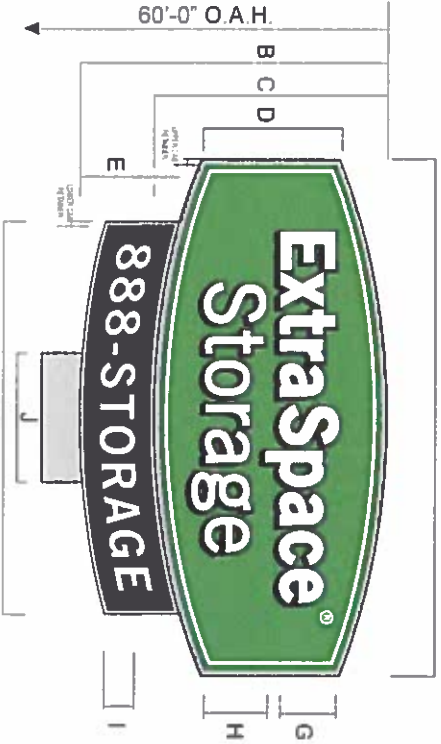


LAYOUT

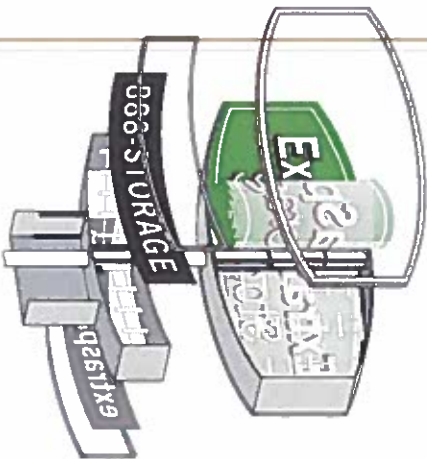


opposite side of subcabinet

extraspaces.com



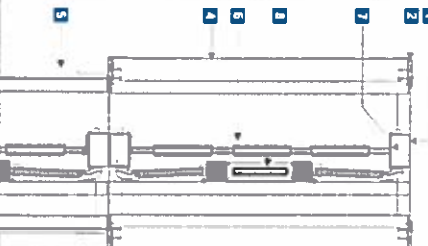
EXPLODED SECTION



SPECIFICATIONS

- 1 .500" ALUMINUM CABINET PAINTED SW 7067 CITY SCAPE
- 2 FABRIC AND RETAINERS PAINTED TO MATCH CABINET & SIGN COLOR. CAP SYSTEM
- 3 POLE CONCRETE PAINTED SW 7067 CITY SCAPE
- 4 WHITE FLEXFACE WITH APPLIED VINYL FINISHES (SEE SCHEDULE)
- 5 WHITE LEANFACE WITH APPLIED VINYL FINISHES (SEE SCHEDULE)
- 6 USGASKY APPROVED LED LIGHTING SYSTEM
- 7 LED LIGHTS 5-1/2" DIAMETER 110VAC 1/2HP 6000LM 8000K100 STRUCTURAL SUPPORT BRACKET W/ WIREWAY
- 8 ELECTRICAL POWER SUPPLY

SIDE SECTION VIEW



PYLON DIMENSIONS

A	B	C	D	E	F	G	H	I	J	MINIMUM CLEARANCE FROM SIGN	MINIMUM CLEARANCE FROM SIGN
22'-4"	13'-4"	10'-1"	6'-0"	4'-1"	16'-11"	2'-4"	2'-7"	1'-4"	5'-7"	1.5X	300
											15.8
											13

120v circuits are required for all signs

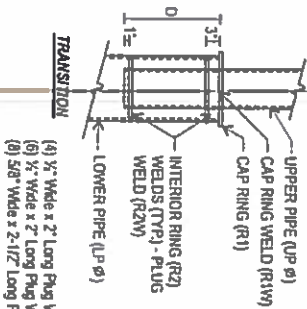
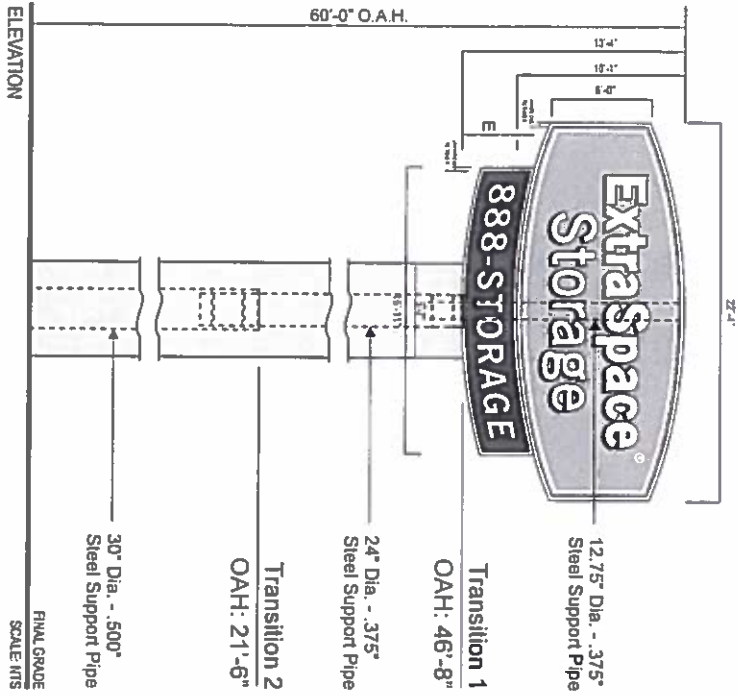
CABINET DEPTH

DEPTH	6"	8"	10"	12"
HEIGHT	24"	26"	30"	32"
LENGTH	14"	16"	20"	22"
WIDTH	10"	12"	16"	20"

COLOR SCHEDULE

- GREEN #2500-106 BRILLIANT
- GREY SW 7067 CITY SCAPE
- WHITE
- BLACK #2500-022 FINISH BY COLOR

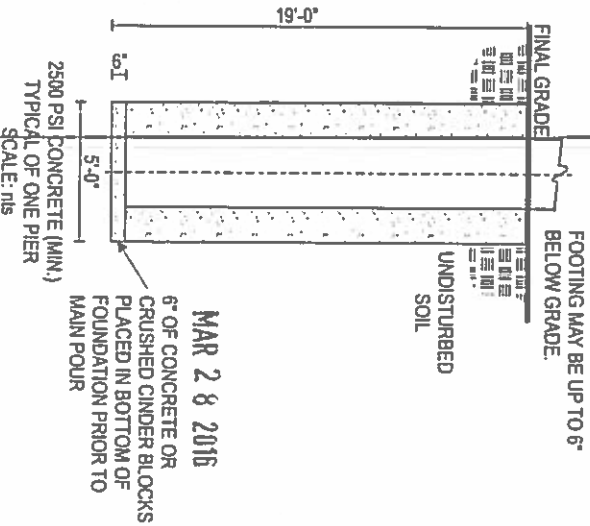




TRANSITION

(a) 3/4" Wide x 2" Long Plug Welds (<24" Dia.)  
 (b) 1/2" Wide x 2" Long Plug Welds (24" to 48" Dia.)  
 (c) 5/8" Wide x 2-1/2" Long Plug Welds (>48" Dia.)

TRANSITION TABLE		D	R1	R2	R1W	R2W	
#	UP Ø	LP Ø	D	R1	R2	R1W	R2W
1	12"	24"	3.0'	1"	3/4"	5/16"	5/16"
2	24"	30"	3.75'	1"	3/4"	3/8"	3/8"



A 13'-4" x 22'-4" Pylon @ 60' OAH



APPROVED BY  
AUSTIN ENERGY  
FOR BOA

DATE: *[Signature]*

**REVIEWED**  
By Eben Kellogg at 2:38 pm, Sep 27, 2018

**APPROVED BY EBEN KELLOGG**