

0645

# GIS Overlays

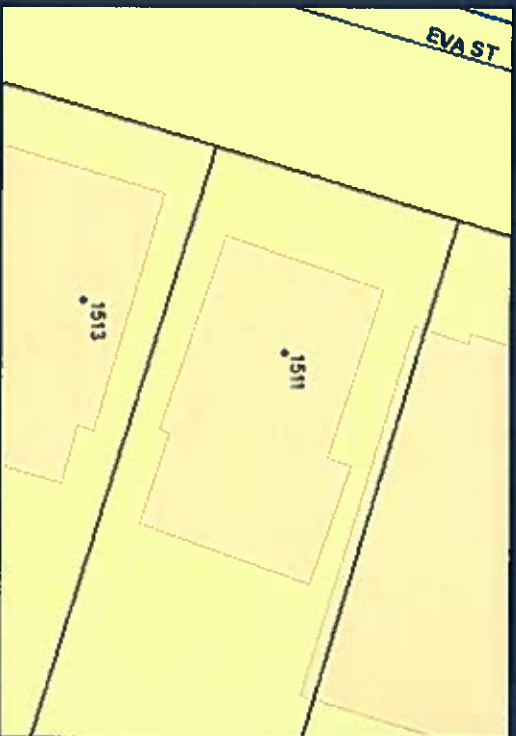


Pre-1996 Footprint



1996 Addition

# GIS Overlays (cont'd)



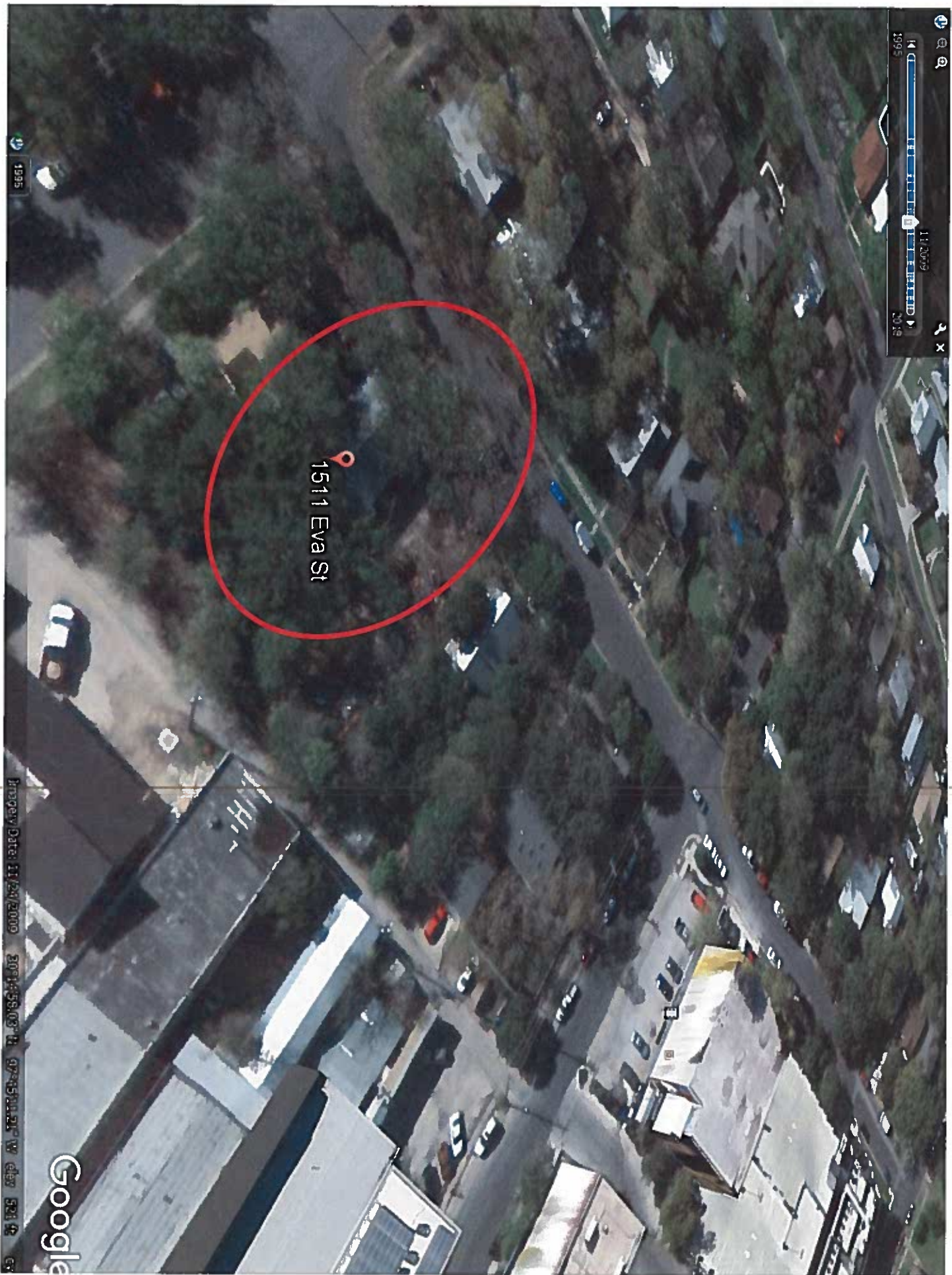
Present-day Footprint



Present-day Aerial



Images U.S. Geological Survey



11/20/09  
10.18

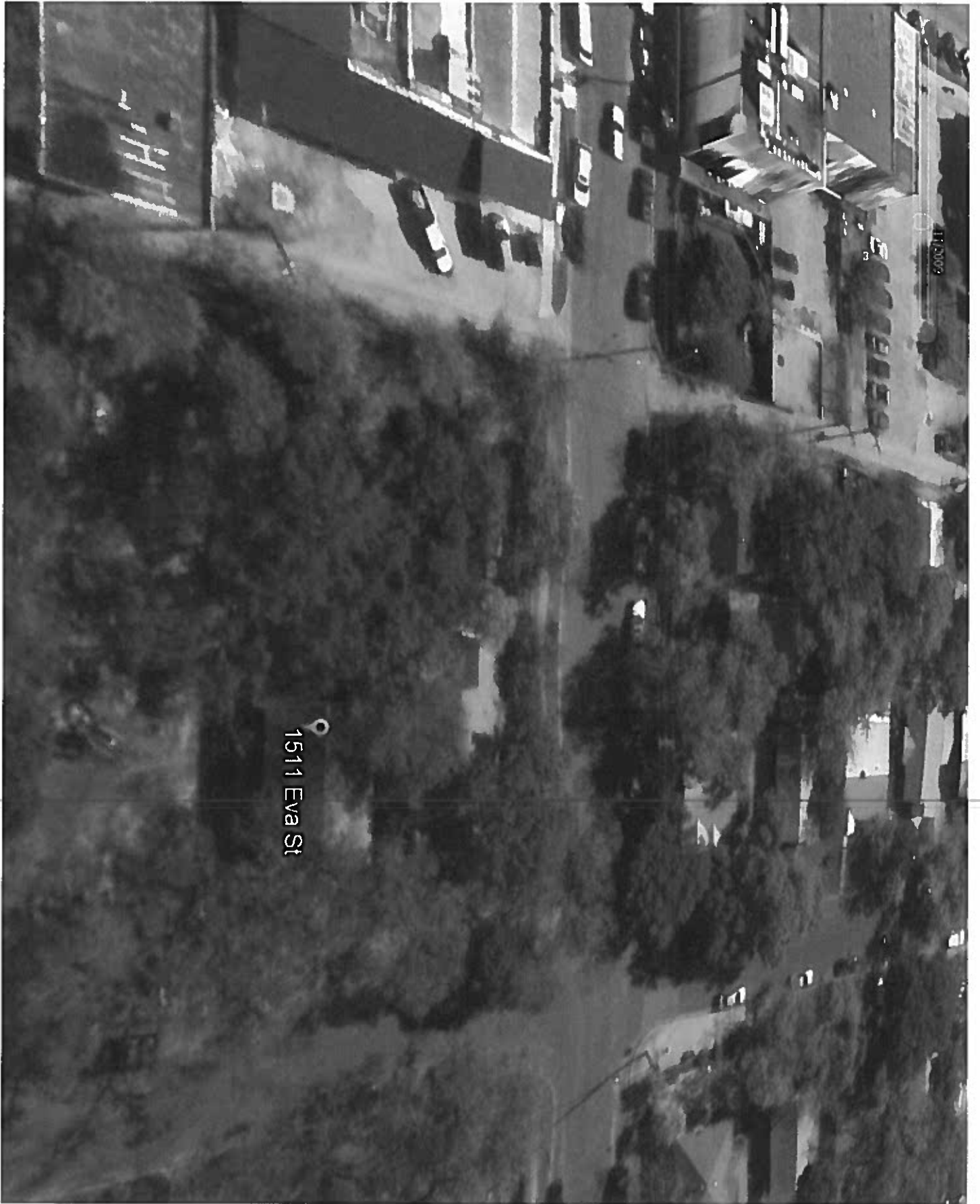
1511 Eva St

Image Date: 11/20/2009 30°14'58.03" N 97°45'00.21" W elev 521 ft

Google

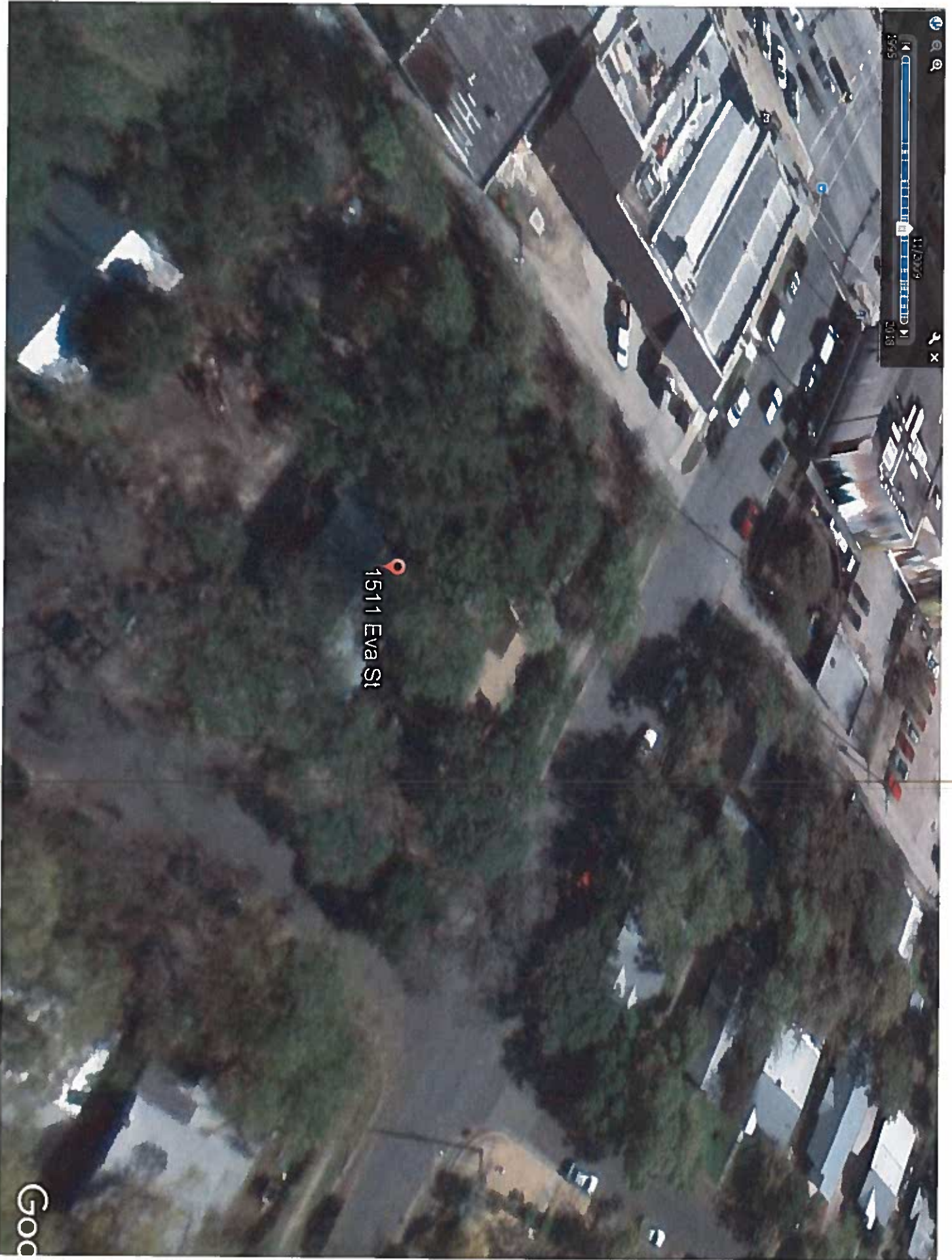


1511 Eva St



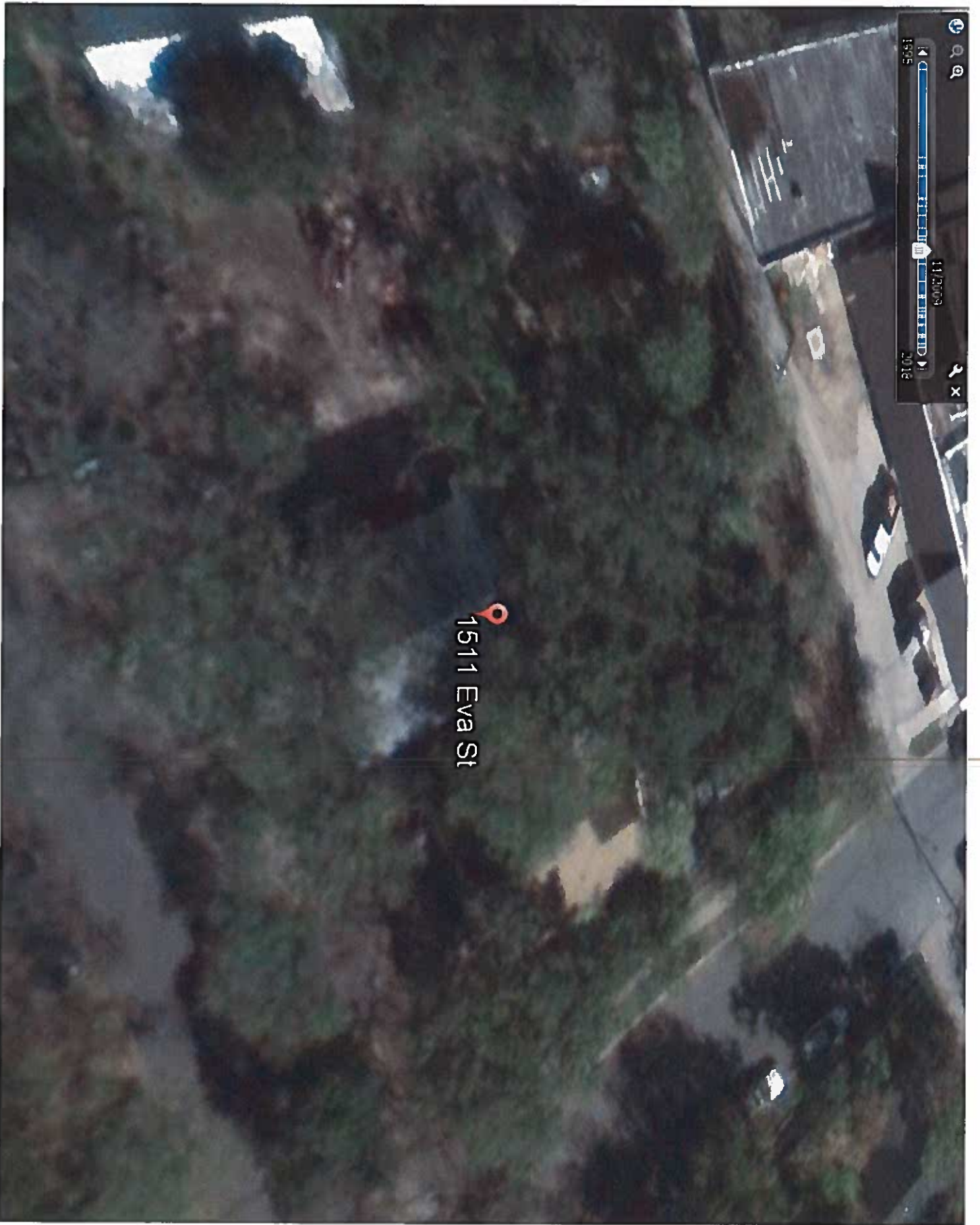
1511 Eva St

11/2002



Navigation and map controls including a search icon, a zoom slider, and a compass. The zoom level is set to 11/2009. The date and time are displayed as 10/18.

1511 Eva St



1511 Eva St

112009  
CLEAR  
2018





1511 Eva St



1511 Eva St

Navigation interface elements including a zoom slider, a date range selector showing '5/2011' and '2019', and various control icons.