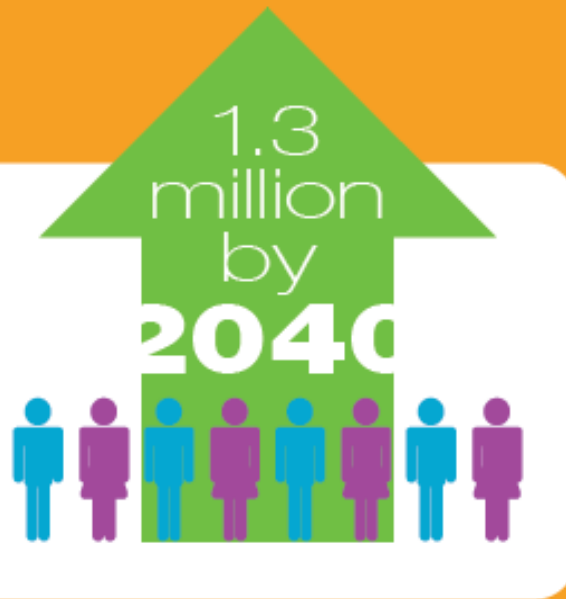




Austin Strategic Mobility Plan

COMMUNITY DEVELOPMENT COMMISSION

DECEMBER 11, 2018

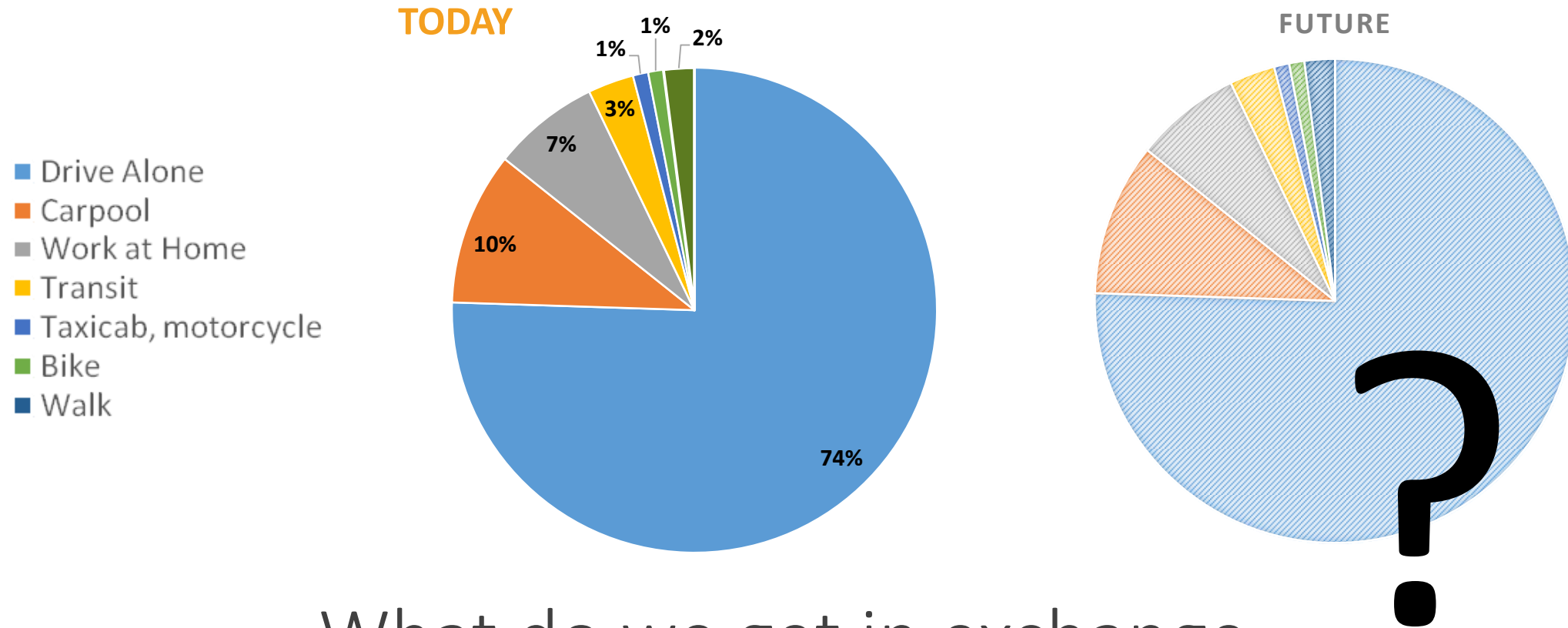


Austin's population is expected to almost **DOUBLE** over the next 30 years.

Given this growth, even maintaining current levels of traffic congestion will require significant shifts in how we get around, utilizing all modes of transportation such as driving, walking, bicycling, and taking public transit.

How will we get around in the future?

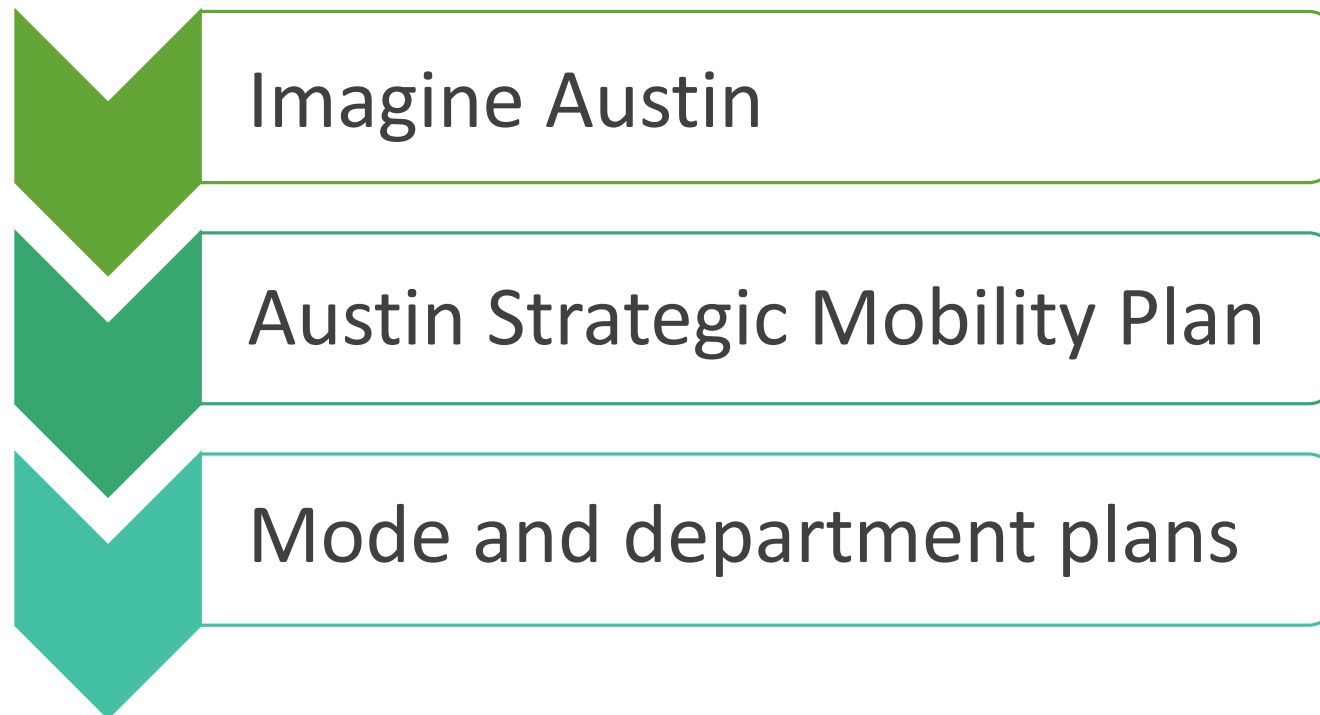
Motivation behind the Plan



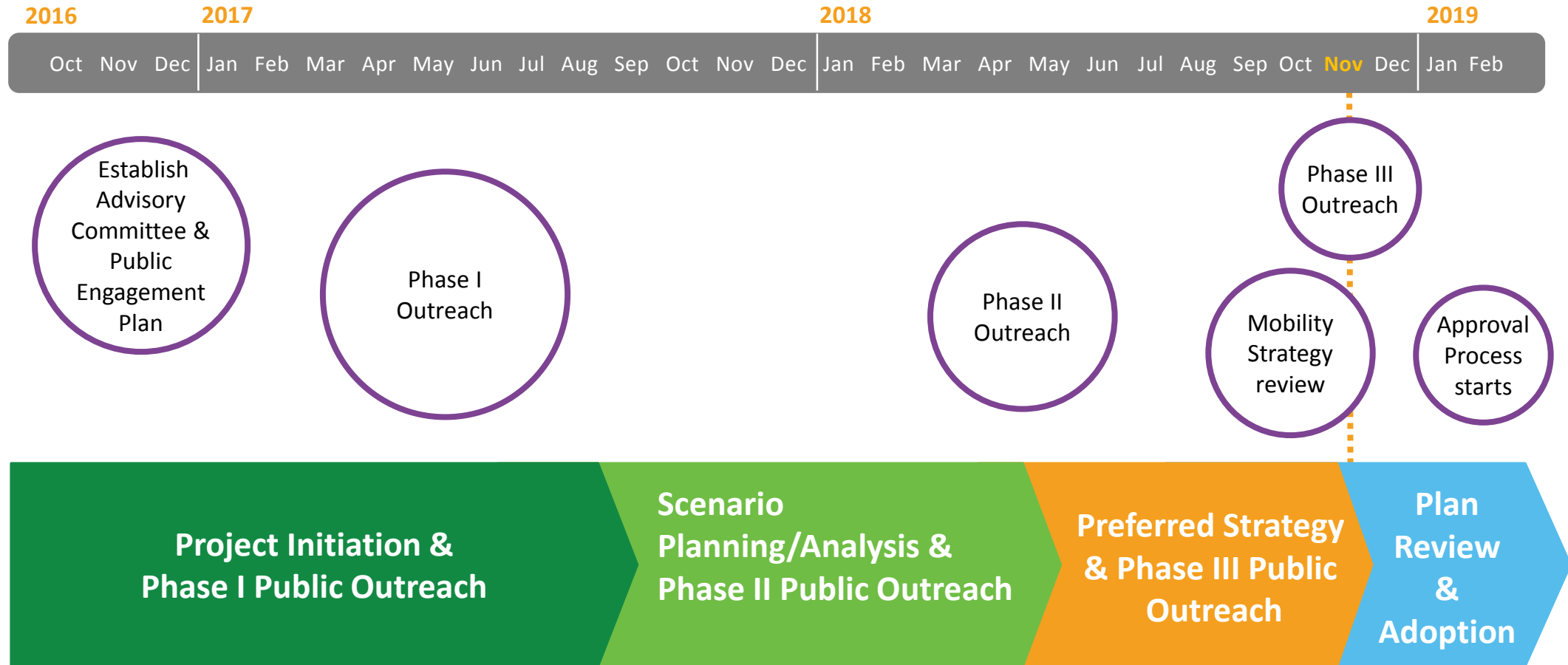
What do we get in exchange
for more diversified mode-share

What is the Austin Strategic Mobility Plan?

- The City's new, locally-focused transportation plan
- A “North Star” for the variety of transportation plans, projects, and programs in the City



Schedule



Planning Approach

Technical:

Scenario Planning

Identify
transportation
network
needs

Model
different
transportation
network
scenarios

Measure
performance
indicators for
scenarios

Public Engagement:

Targeted to Focus Populations

Youth
(24 and younger)

Seniors
(65 and older)

People of
Color

People with
Mobility
Impairments

Phase I

PLAN GOALS



Travel Choice



Affordability



Sustainability



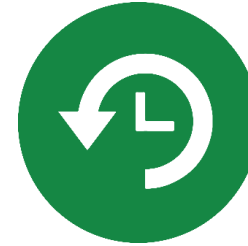
Economic Prosperity



Health & Safety



Innovation



Commuter Delay



Placemaking

Phase I Results

Overall Results



Commuter Delay



Affordability



Health & Safety



Travel Choice



Sustainability



Placemaking



Economic Prosperity



Innovation

Focus Populations



Affordability



Commuter Delay



Travel Choice



Health & Safety



Sustainability



Placemaking

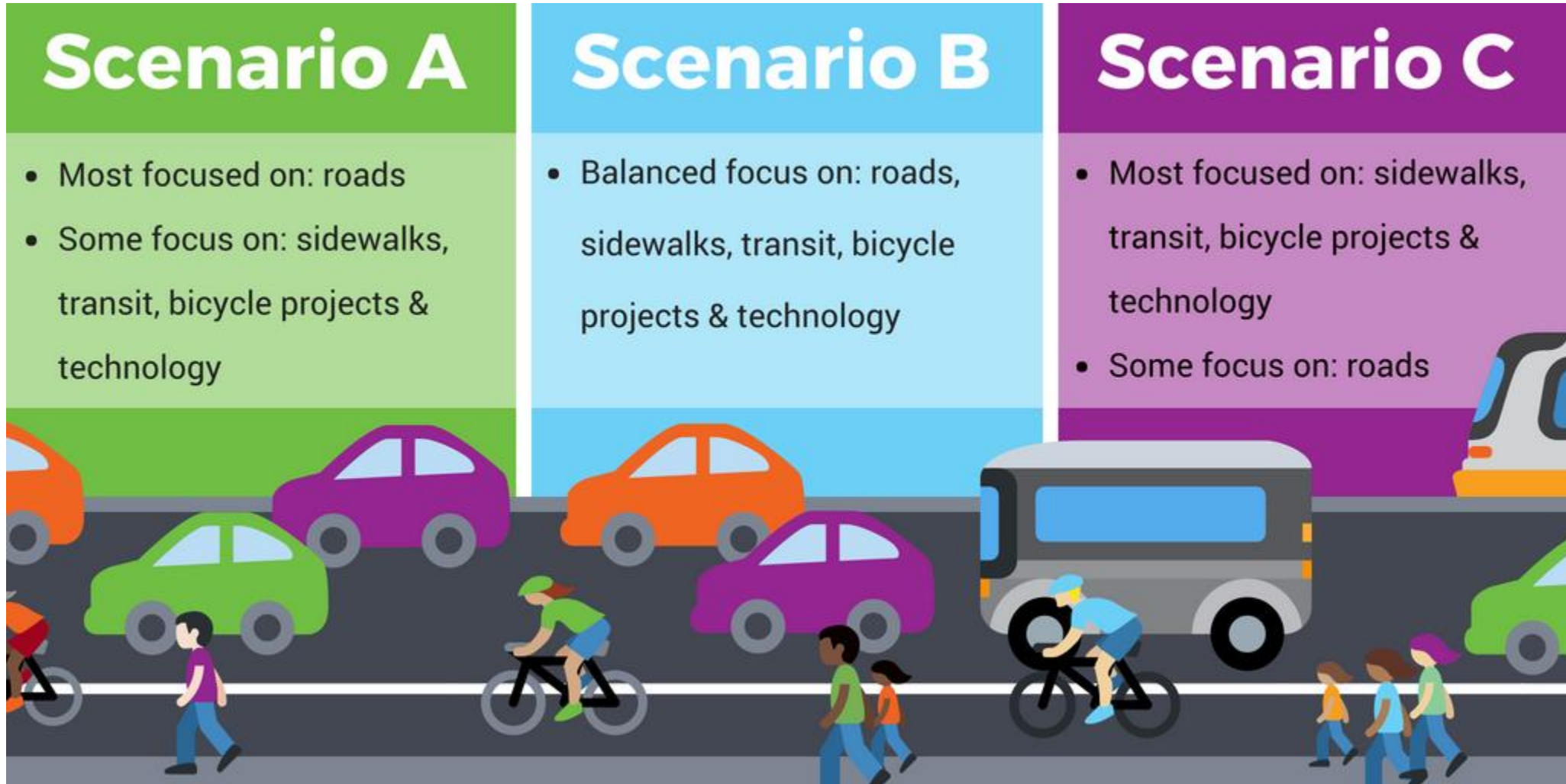


Economic Prosperity



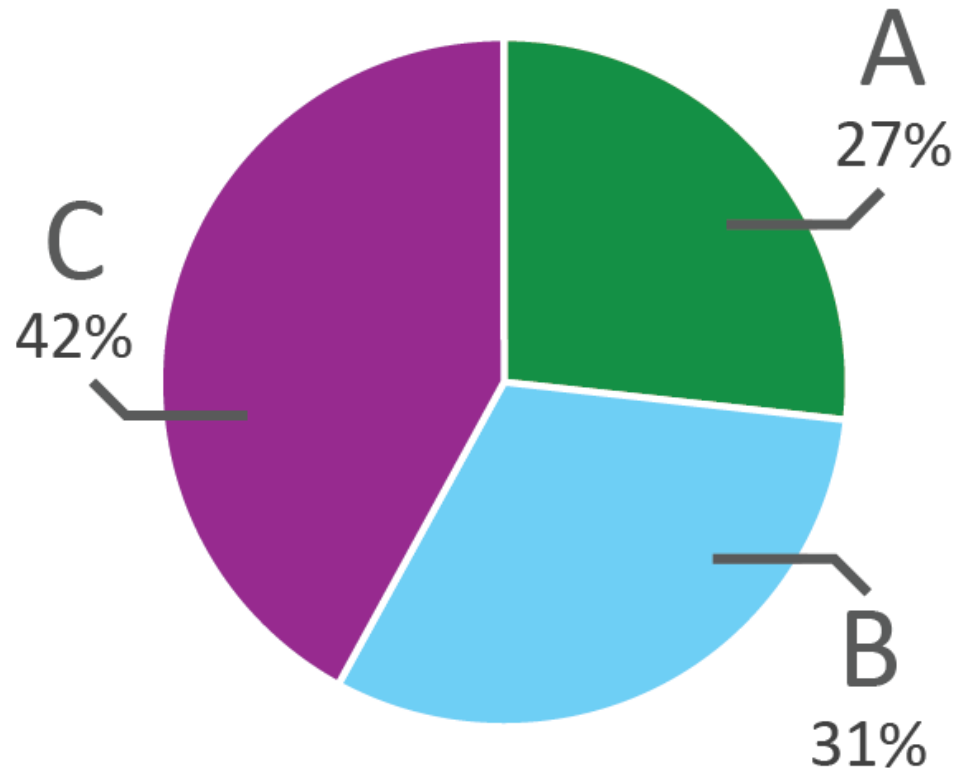
Innovation

Phase II

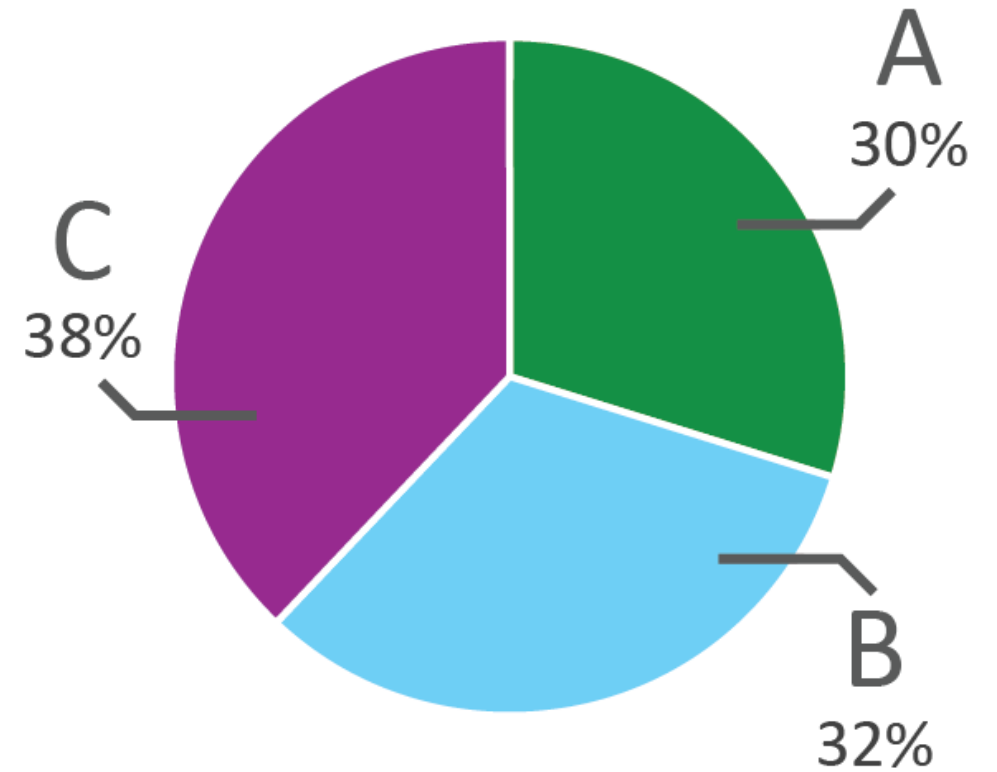


Phase II Results

Overall Population



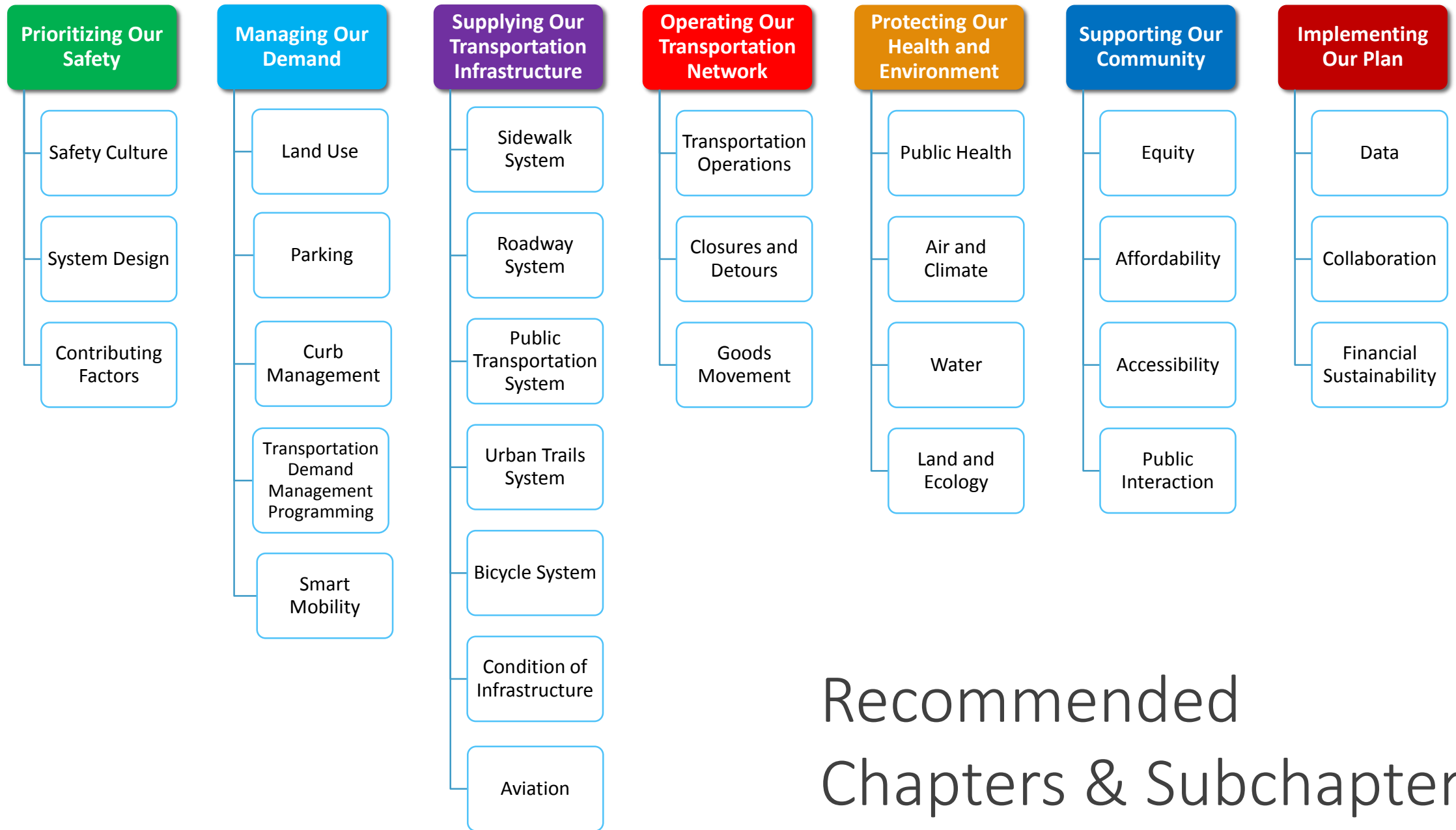
Focus Populations



Approach to Policy Development

Develop policies and programs that support the implementation of the transportation network:

- ✓ Identify chapters of the ASMP to address all 8 Goals
 - ✓ Review existing plans and inventory recommendations
 - ✓ Organize and make determinations of what items to keep, revise for ASMP
 - ✓ Identify gaps in existing policy and needed future policy
 - ✓ Meet with internal / external departments and agencies to review policies
- ☐ Gather feedback from community members and groups
 - ☐ Make adjustments based on feedback



Recommended Chapters & Subchapters

ASMP Table of Contents

Chapter 1: Prioritizing Our Safety

Chapter 2: Managing Our Demand

Chapter 3: Supplying Our Transportation Infrastructure

We want to know what the people think of these drafts!

Chapter 4: Operating Our Transportation Network

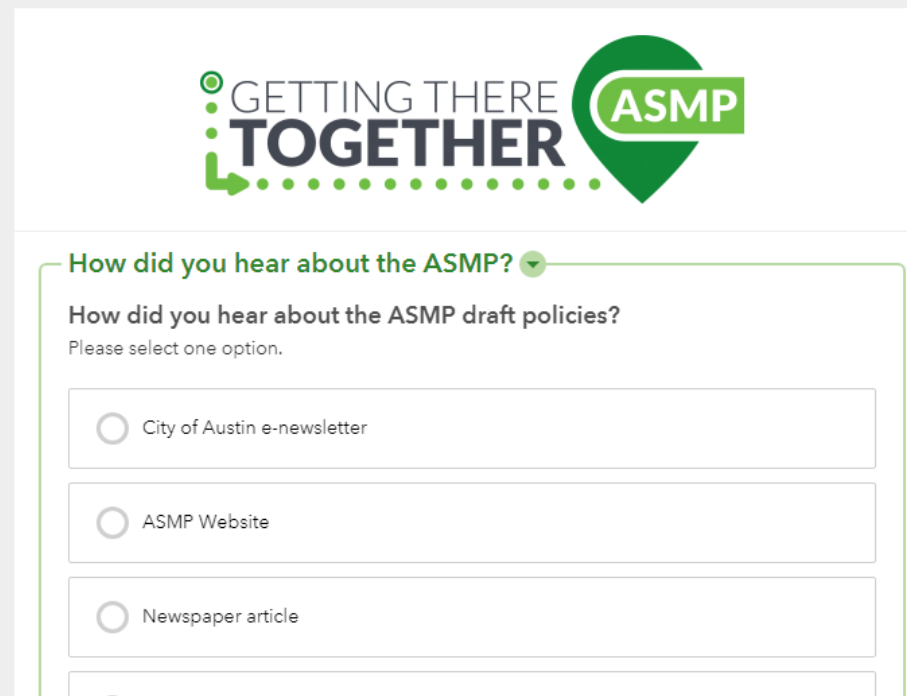
Chapter 5: Protecting Our Health and Environment

Chapter 6: Supporting Our Community

Chapter 7: Implementing Our Plan

Tell Us What You Think!

Please take the short survey below to provide feedback on the draft policies. If you are using a mobile device, [please take our mobile survey instead](#).



GETTING THERE TOGETHER ASMP

How did you hear about the ASMP? ▼

How did you hear about the ASMP draft policies?
Please select one option.

- ☐ City of Austin e-newsletter
- ☐ ASMP Website
- ☐ Newspaper article
- ☐

Austin Strategic Mobility Plan

Developing the Draft Transportation Network

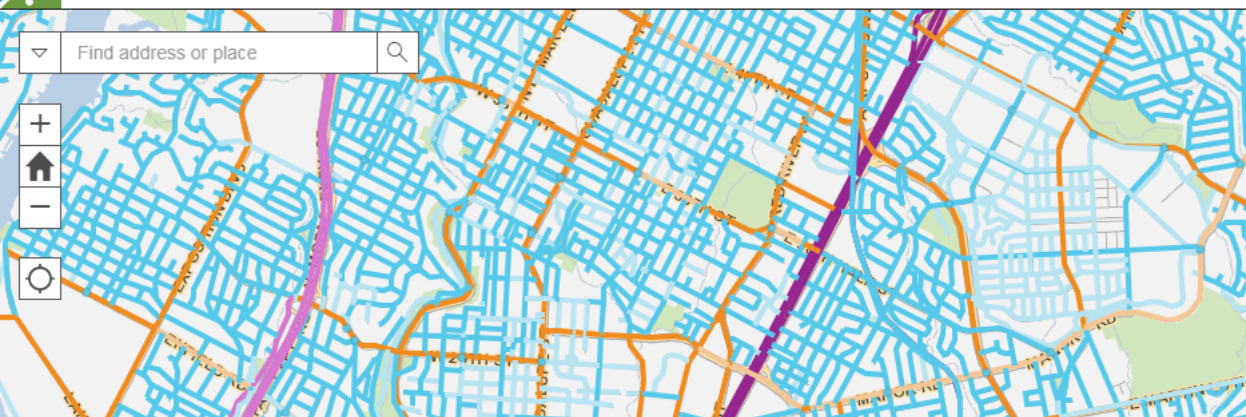
Welcome to Part Two of the draft recommendations for the Austin Strategic Mobility Plan (ASMP). This presentation is a series of maps of the draft ASMP transportation network which will help direct our transportation investments for years to come. Part One is a preview of the draft ASMP policy statements, and can be found at www.austintexas.gov/ASMP or by selecting the following link.

Developing the Draft Policies

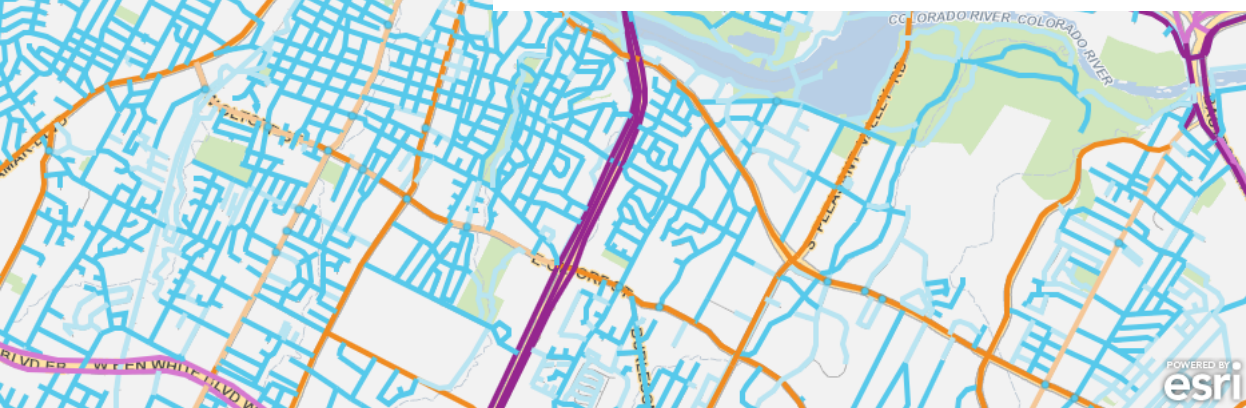
The ASMP is the City's new transportation plan. The ASMP will address the ways we get around Austin and guide our transportation policies, programs, projects, and investments for the next 20+ years. It will also build connections, improve our current systems, increase accountability, and plan for Austin's long-term transportation future.

We want to hear from you! At the end of this presentation, you can provide feedback in a map about the draft ASMP transportation network.





This is our feedback map.
It can be used to review
proposed projects or
suggest new projects for
all modes.



Filter list by map	
SHOAL CREEK TRAIL Urban Trail	10 ♥
S LAMAR BLVD Access Managem...	5 ♥
NEW BRIDGE OVER LADY BIRD ...	5 ♥
S MOPAC EXPY Highway Improve...	4 ♥
Red Line Commuter Rail	4 ♥
SHOAL CREEK TRAIL Urban Trail	3 ♥
CONGRESS AVE Corridor Mobil...	3 ♥
en Line Commuter Rail	3 ♥
NCHACA RD @ BARTON SKW...	2 ♥
IDSOR PARK NEIGHBORHOO...	2 ♥
ST AVE Sidewalk	2 ♥
LLER ST Bicycle Facilities	2 ♥
W OLTORF ST Bicycle Facilities	2 ♥
W 5TH ST Corridor Mobility Impro...	2 ♥
W 4TH ST Sidewalk	2 ♥
W 43RD ST New Roadway	2 ♥
W 38TH ST Access Management	2 ♥
S CONGRESS AVE Corridor Mobil...	2 ♥

Austin Strategic Mobility Plan

Provide Feedback in the Map

Please use this map to tell us what improvements you like or dislike, or what improvements you think are missing from the map! You can provide comments on any publicly-owned roads, whether we have recommended a project or not. Your feedback will be used to make adjustments to our recommendations before we bring the final draft to City Council in spring 2019.

The streets are divided into local, corridor, and regional categories, and you can comment regardless of their type. You cannot comment on privately-owned roadways because we and our other governmental partners do not have authority to make improvements.

Zoom into the map to select improvements or select them from the list. Read the description to see the type of improvement and what is recommended. Click the heart to show that you love a project. If you dislike a project, want to suggest a different one, or want to tell us why you love it, click the comment icon and follow instructions to provide your feedback.

Be sure to hit submit after selecting or writing your comment! Your comments will be anonymous, and you have the ability to see what fellow Austinites have said about the street, intersection, or proposed improvement you have selected.

If you are having difficulty viewing the map and providing comments, try opening the map in its own window by selecting the following link. It may be difficult to provide feedback from a mobile device. [Provide feedback in full screen mode.](#)

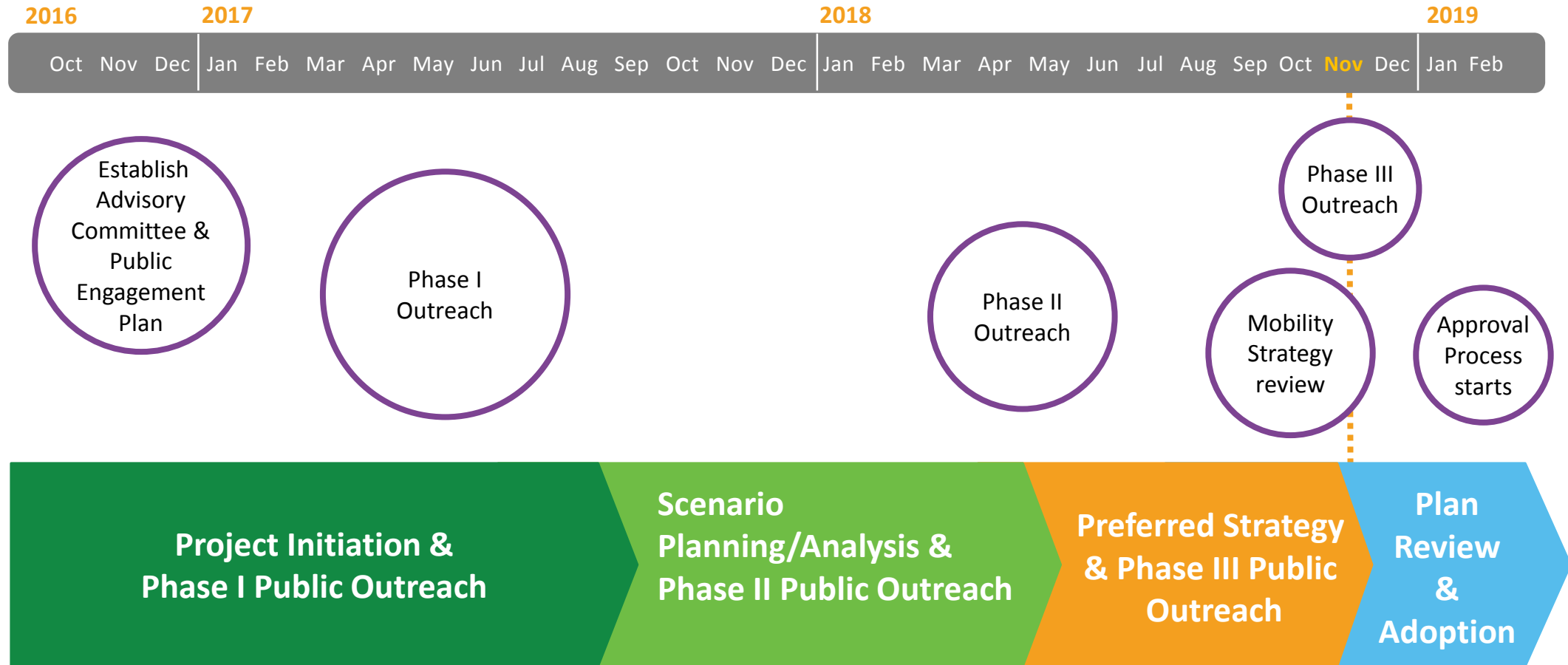
If you would like to provide comments on the draft ASMP policy statements, select the following link.

Draft Transportation Network

In addition to policies, a series of maps have been released:

- Safety Analysis
- Sidewalk System
- Roadway System
- Public Transportation System
- Bicycle System
- Urban Trail System
- Non-radioactive Hazardous Materials Routing

Schedule



Questions?

WARNER COOK

TRANSPORTATION PLANNER, AUSTIN TRANSPORTATION DEPT.

Warner.Cook@austintexas.gov