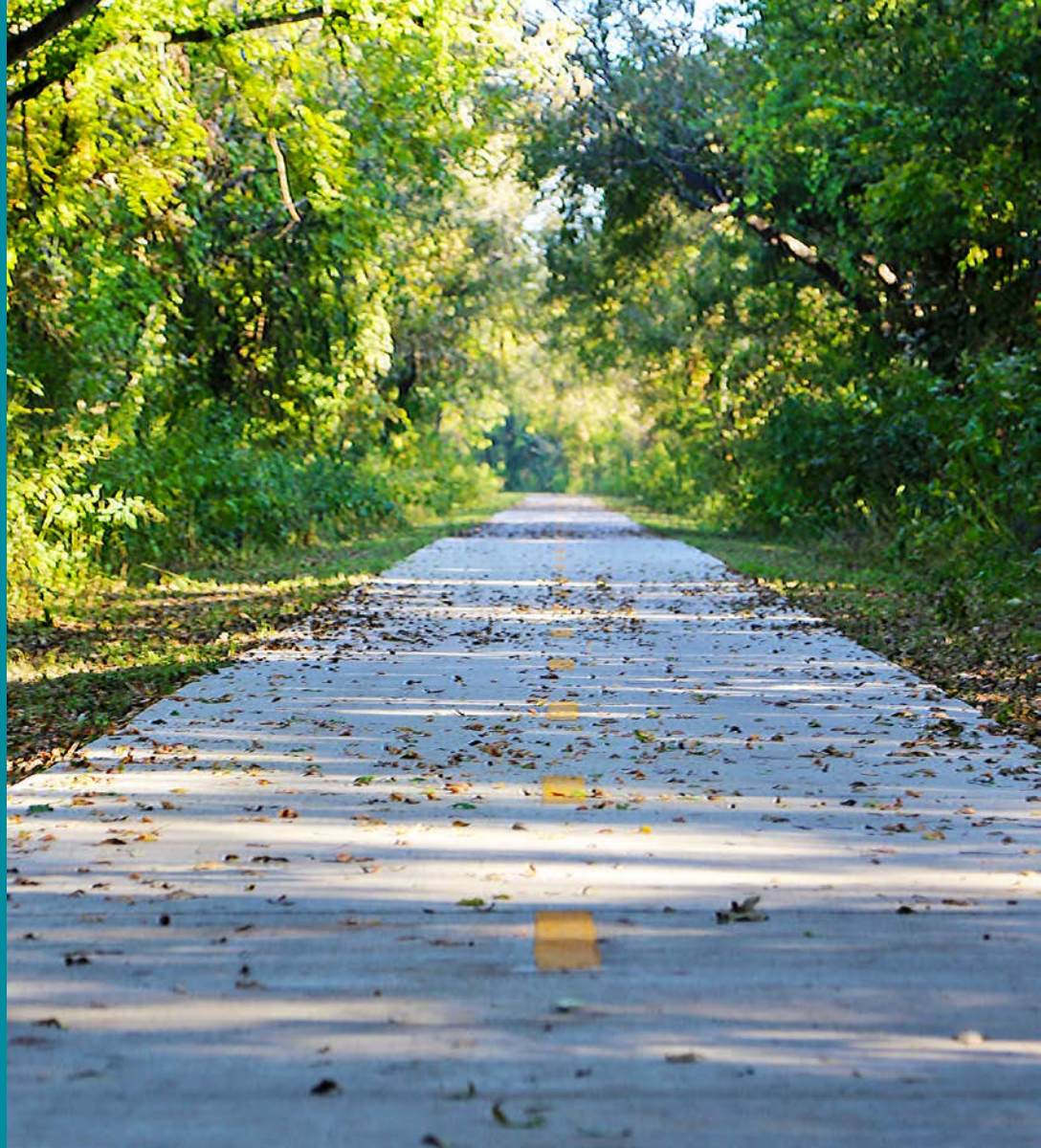


CITY OF AUSTIN
PUBLIC WORKS DEPARTMENT

Urban Trail Projects Updates

CONNECTING YOU
ALL AROUND AUSTIN



Agenda

- **Urban Trails Program Overview**
- **Urban Trails Master Plan requirements**
- **Project Updates**
 - **Austin to Manor Trail Ph 2**
 - **Country Club Creek Trail**
 - **Northern Walnut Creek Trail Ph 2**
 - **Violet Crown Trail – North**

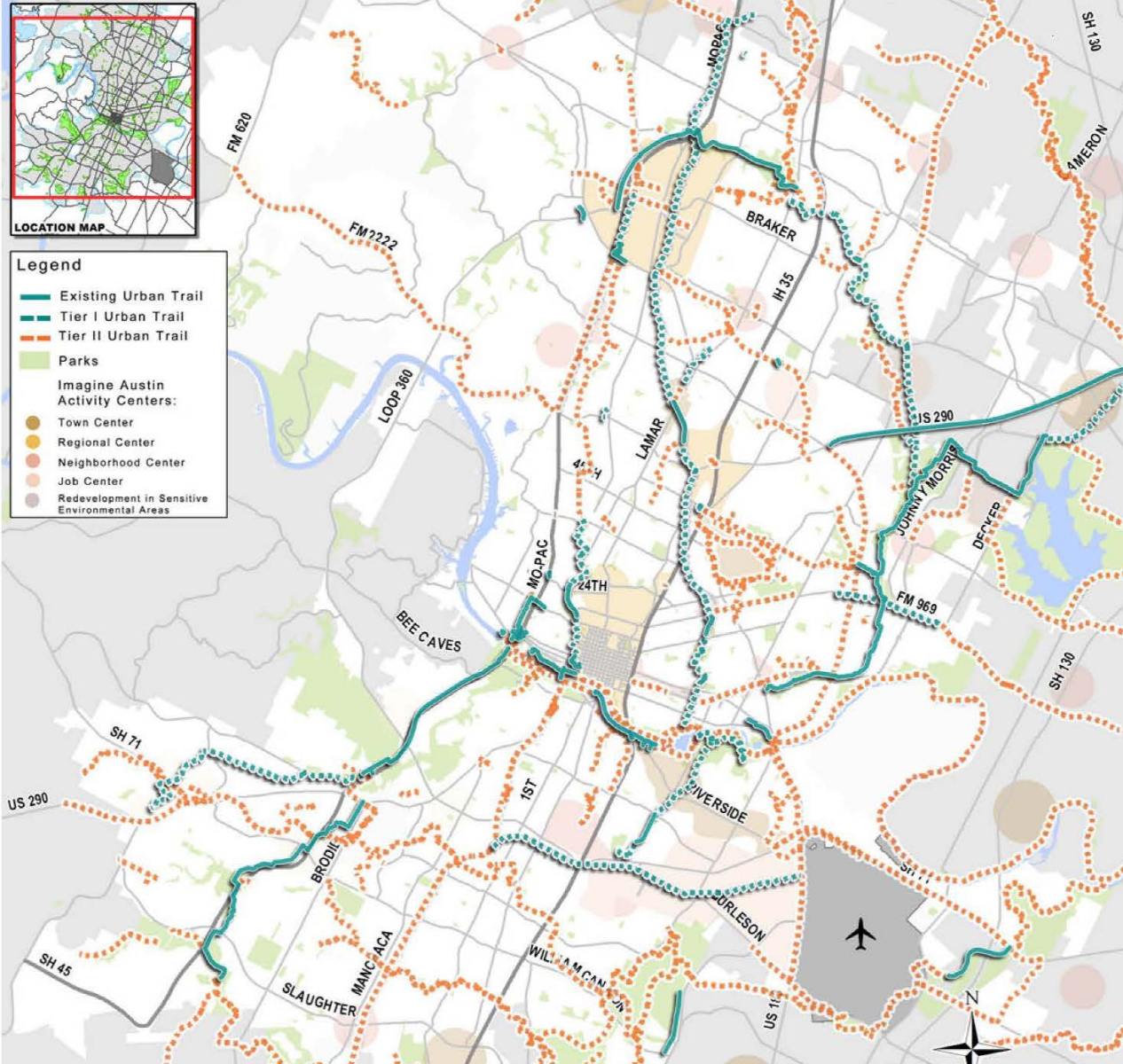
Goals of Urban Trail Program

1. Easy **access** to transportation + recreation users from all parts of the City.
2. **Connect** to on-street bicycle + sidewalk networks.
3. **Adequate width** to accommodate transportation + recreation users.
4. Include **trail amenities/features** that create unique greenways.
5. **Adequate funding** and resources to **maintain + operate**.
6. **Context-sensitive, environmentally sustainable, preservation + improvement upon wildlife** habitat.



Urban Trail Plan

- Completed October 2014
- 47 Miles -Tier I
- 360 Miles- Tier II



Urban Trail Implementation Plan

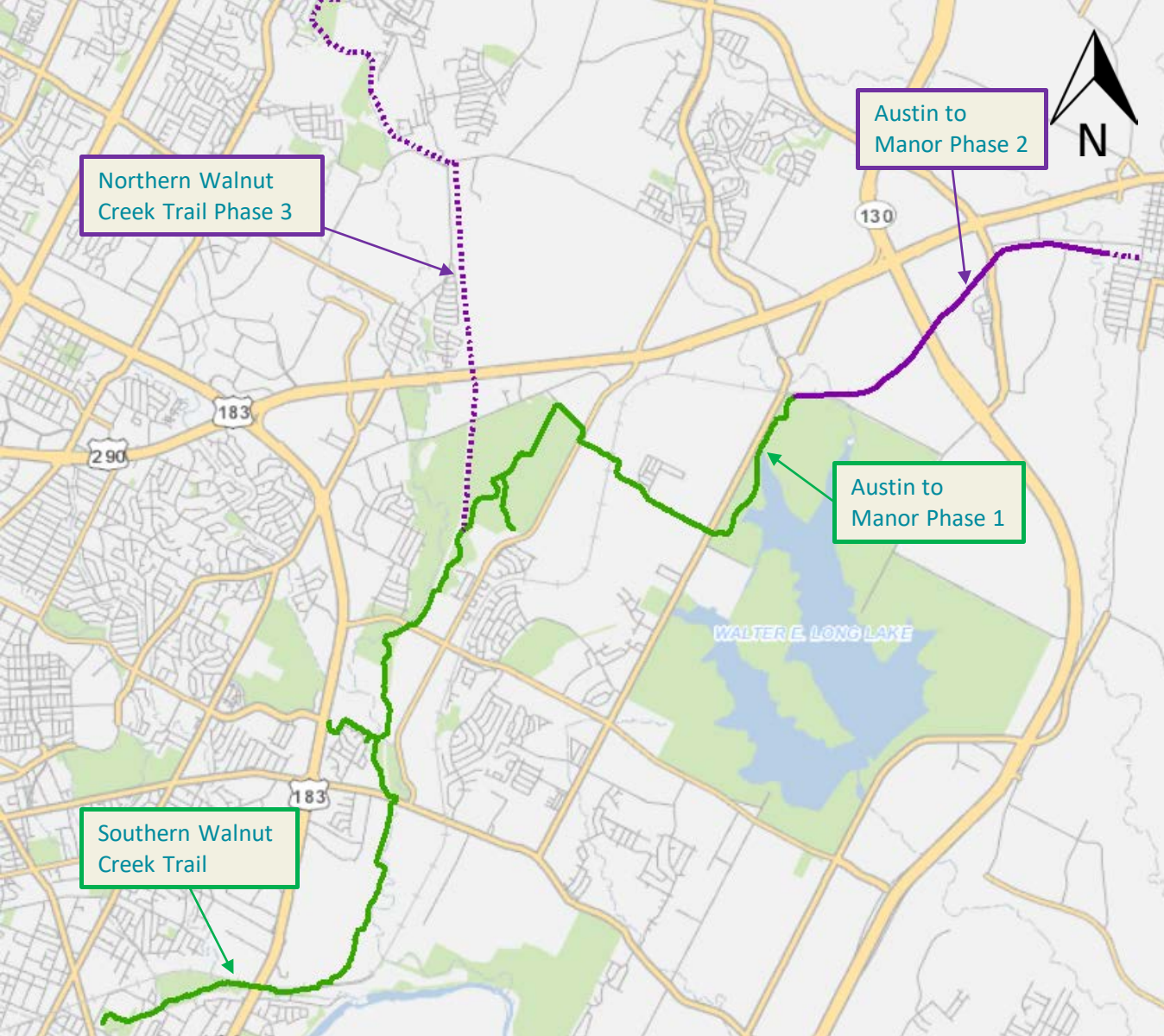


*Tier II Urban Trails were identified during the UTMP or previous planning processes. Development of Tier II Urban Trails will occur upon adjacent development, planning, or land use changes. All Urban Trails identified in the UTMP are conceptual in nature. Specific routing for Urban Trails is determined during the PER and design phases.

Urban Trail Implementation Plan

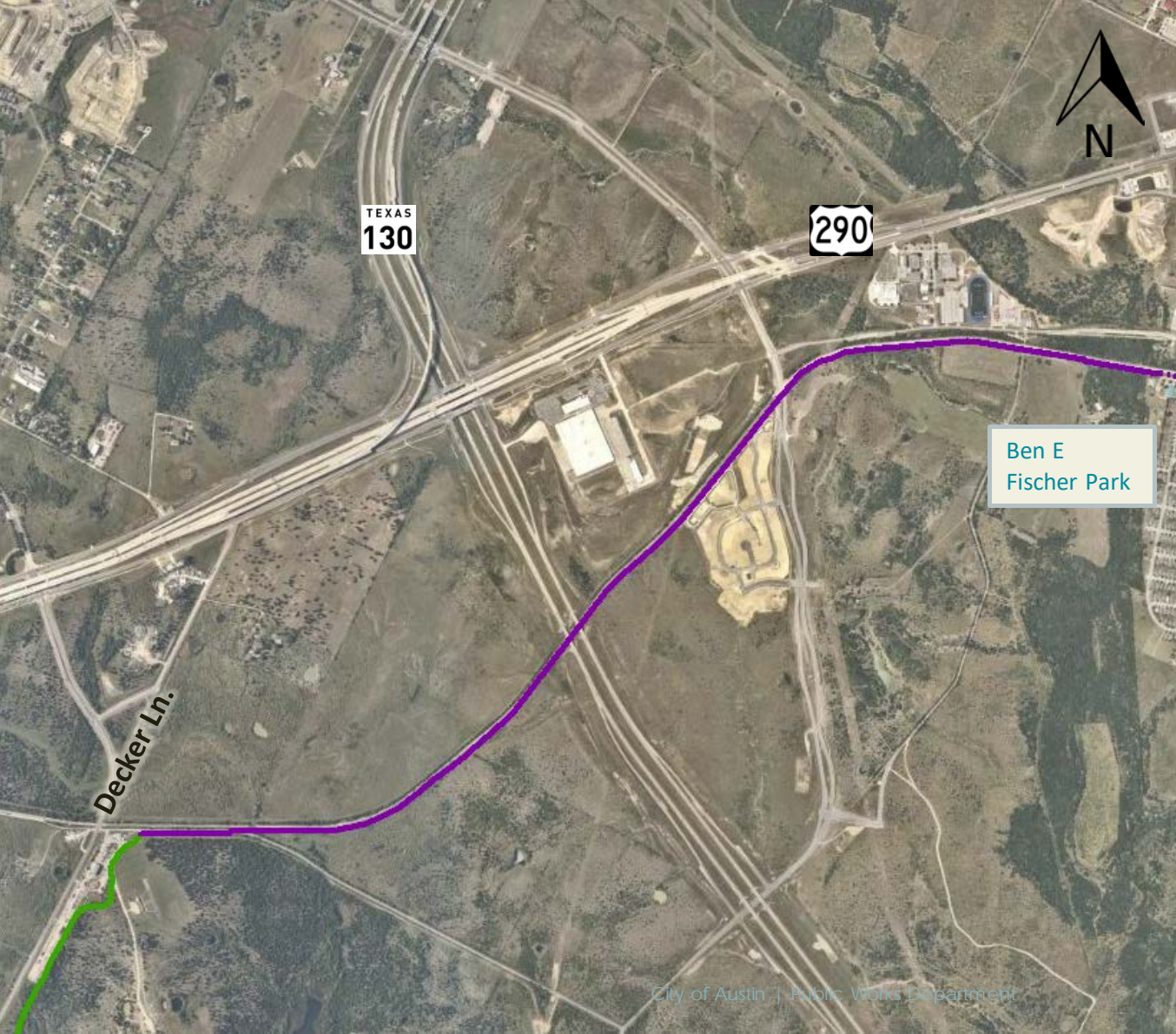


*Tier II Urban Trails were identified during the UTMP or previous planning processes. Development of Tier II Urban Trails will occur upon adjacent development, planning, or land use changes. All Urban Trails identified in the UTMP are conceptual in nature. Specific routing for Urban Trails is determined during the PER and design phases.



Austin to Manor Ph 2

Decker and Lindell Ln
– Ben E Fischer Park



Austin to Manor Ph 2

Decker and Lindell Ln
– Ben E Fischer Park

Ben E
Fischer Park

Project Background



Project Scope

- 11ft concrete trail
- 2.9 miles

Project Funding

- \$7.8M Total Cost
- \$370,000 - 2012 Bond - Design
- \$3.1M - 2016 Bond - Construction
- \$3.7M- CAMPO - Construction
- \$1.26M - Travis County - Construction

Status – 60% Design

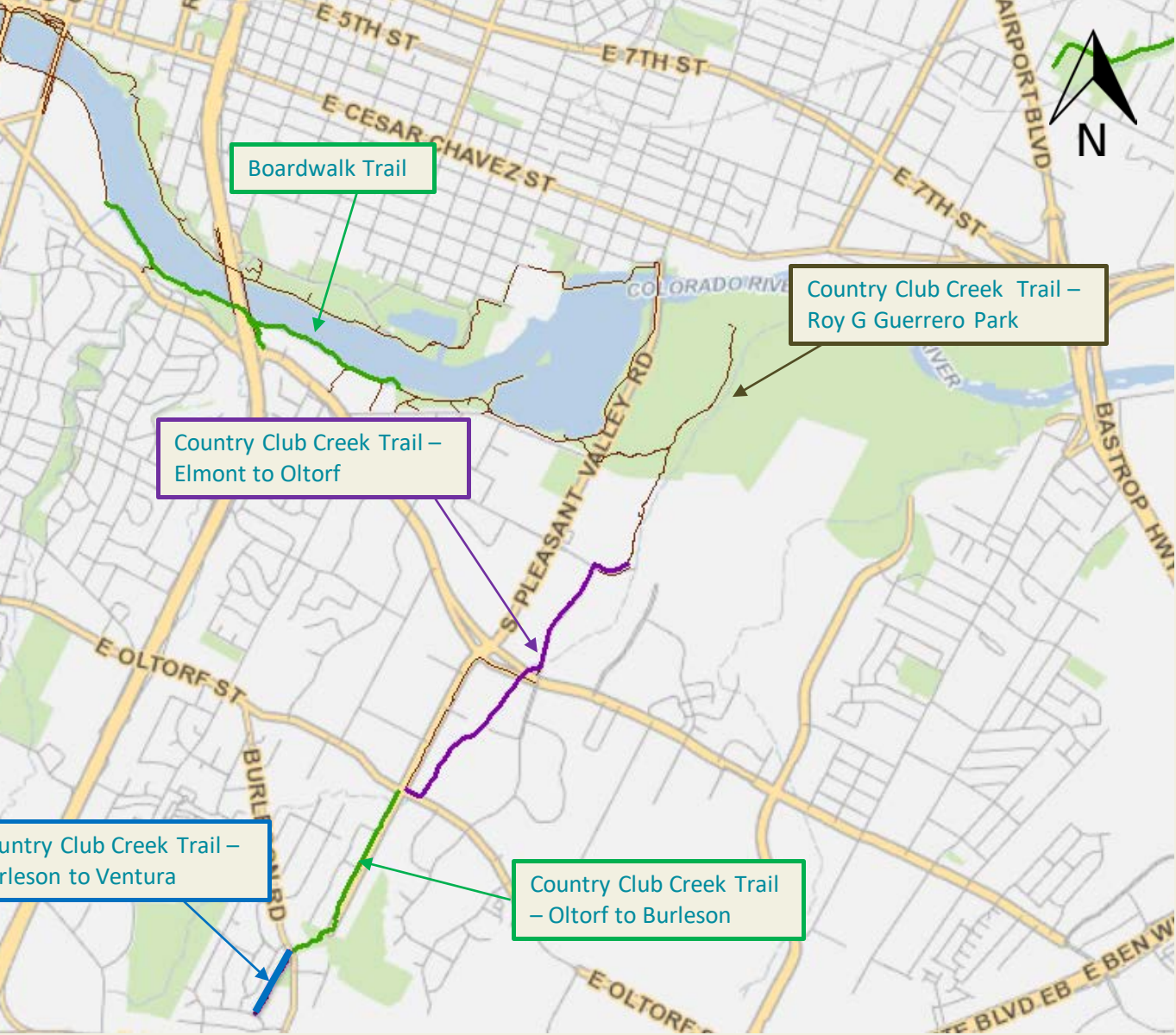
Public Outreach



- Outreach during Walnut Creek Trail phases during Austin to Manor Ph 1
 - Letter of support from Superintendent of Manor ISD
 - Stakeholder engagement
 - Travis County
 - Dwyer Realty Companies
 - City of Manor
 - CapMetro
-

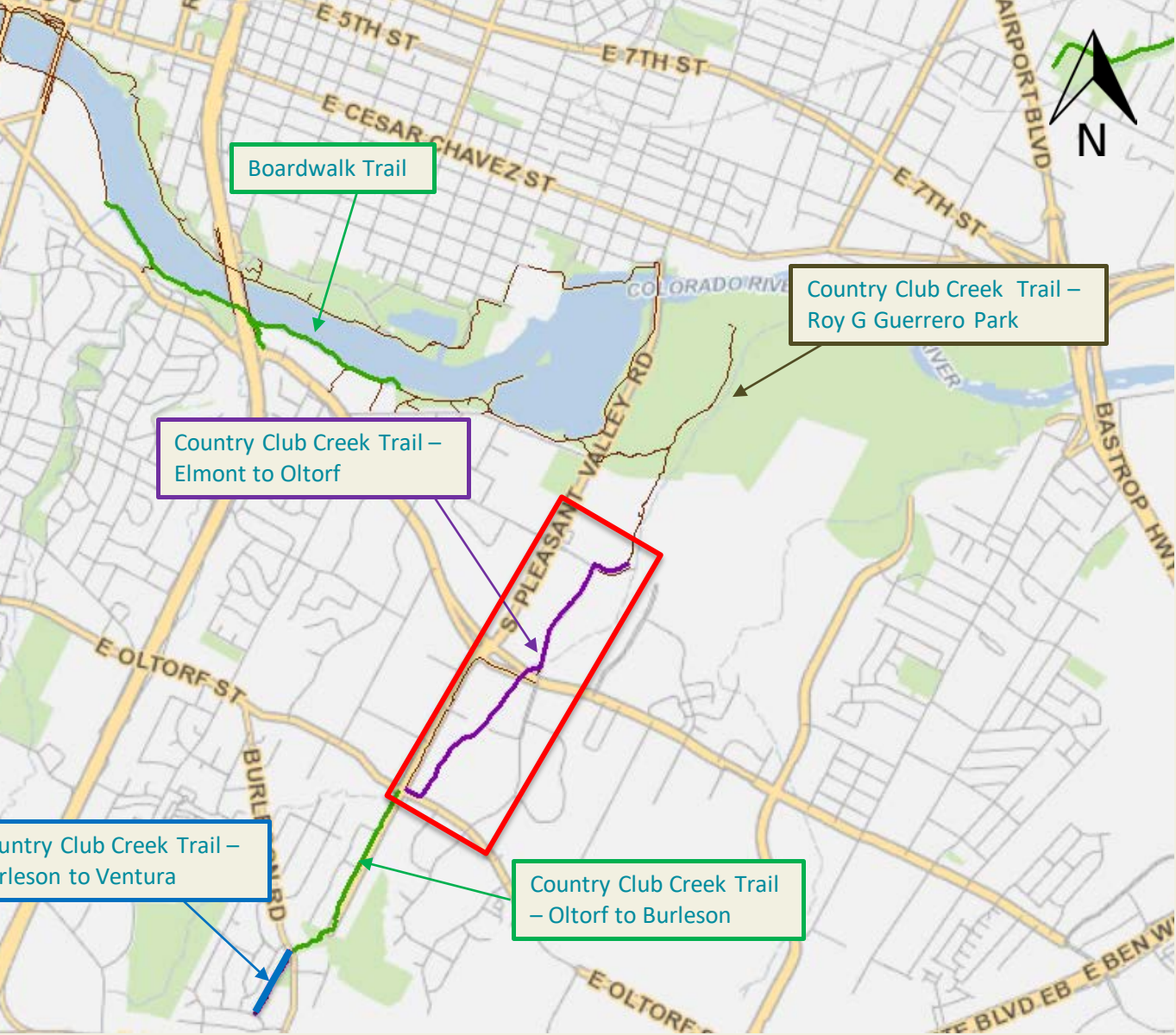
COUNTRY CLUB CREEK TRAIL

Elmont Dr – E Oltorf St



COUNTRY CLUB CREEK TRAIL

Elmont Dr – E Oltorf St



Boardwalk Trail

Country Club Creek Trail –
Roy G Guerrero Park

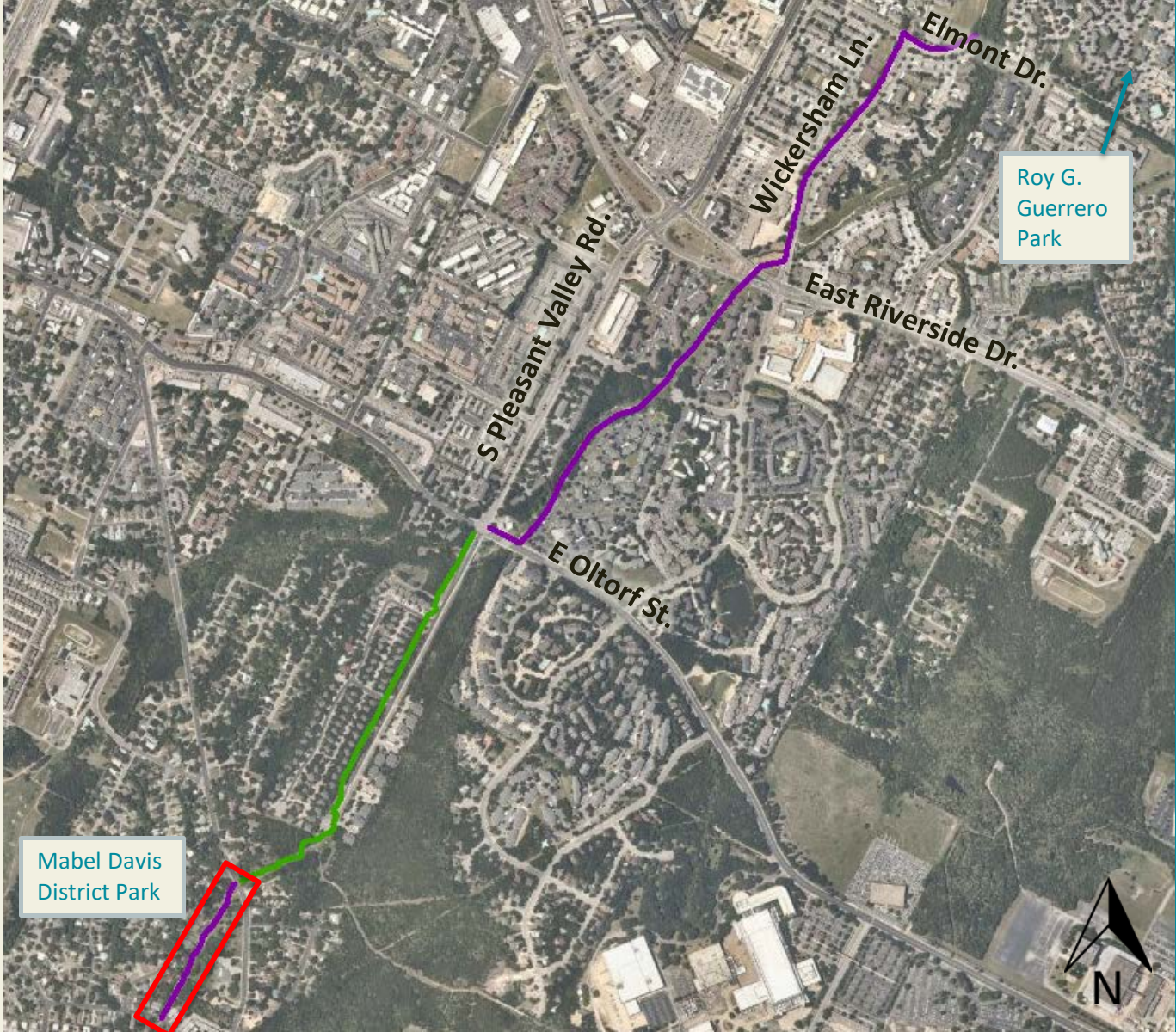
Country Club Creek Trail –
Elmont to Oltorf

Country Club Creek Trail –
Burleson to Ventura

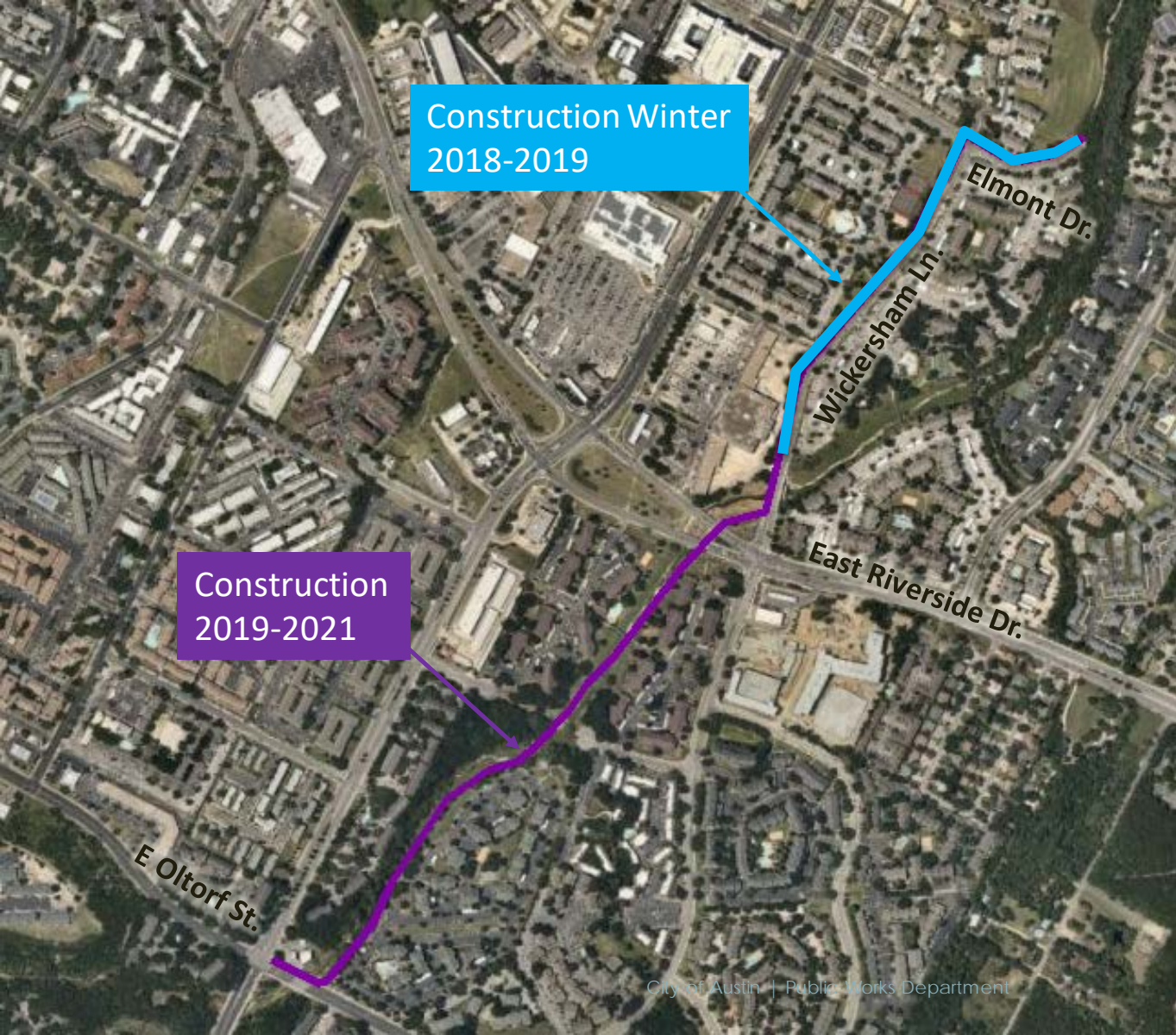
Country Club Creek Trail
– Oltorf to Burleson

COUNTRY CLUB CREEK TRAIL

Elmont Dr – E Oltorf
St – Burleson



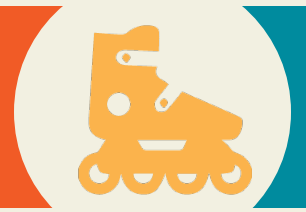
COUNTRY CLUB CREEK TRAIL



Construction Winter
2018-2019

Construction
2019-2021

Project Background



Project Scope

- 12ft wide concrete trail, 2ft grass shoulders
- 1 mile
- Lighting will be included but no specifics yet

Project Funding

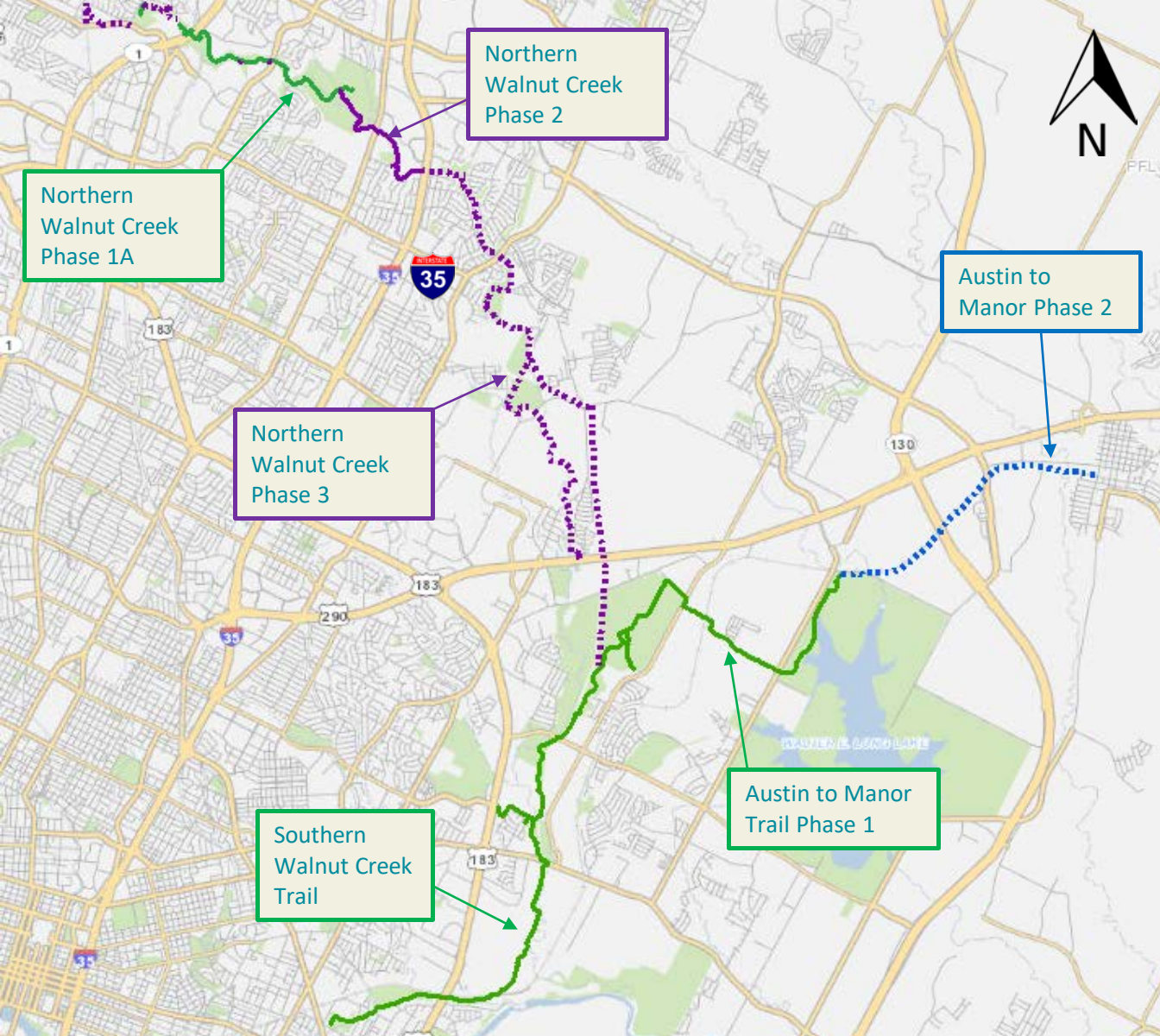
- \$6.25M Total Cost
- 2016 Bond

Status – Working toward 60% for E Riverside to E Oltorf section

Public Outreach

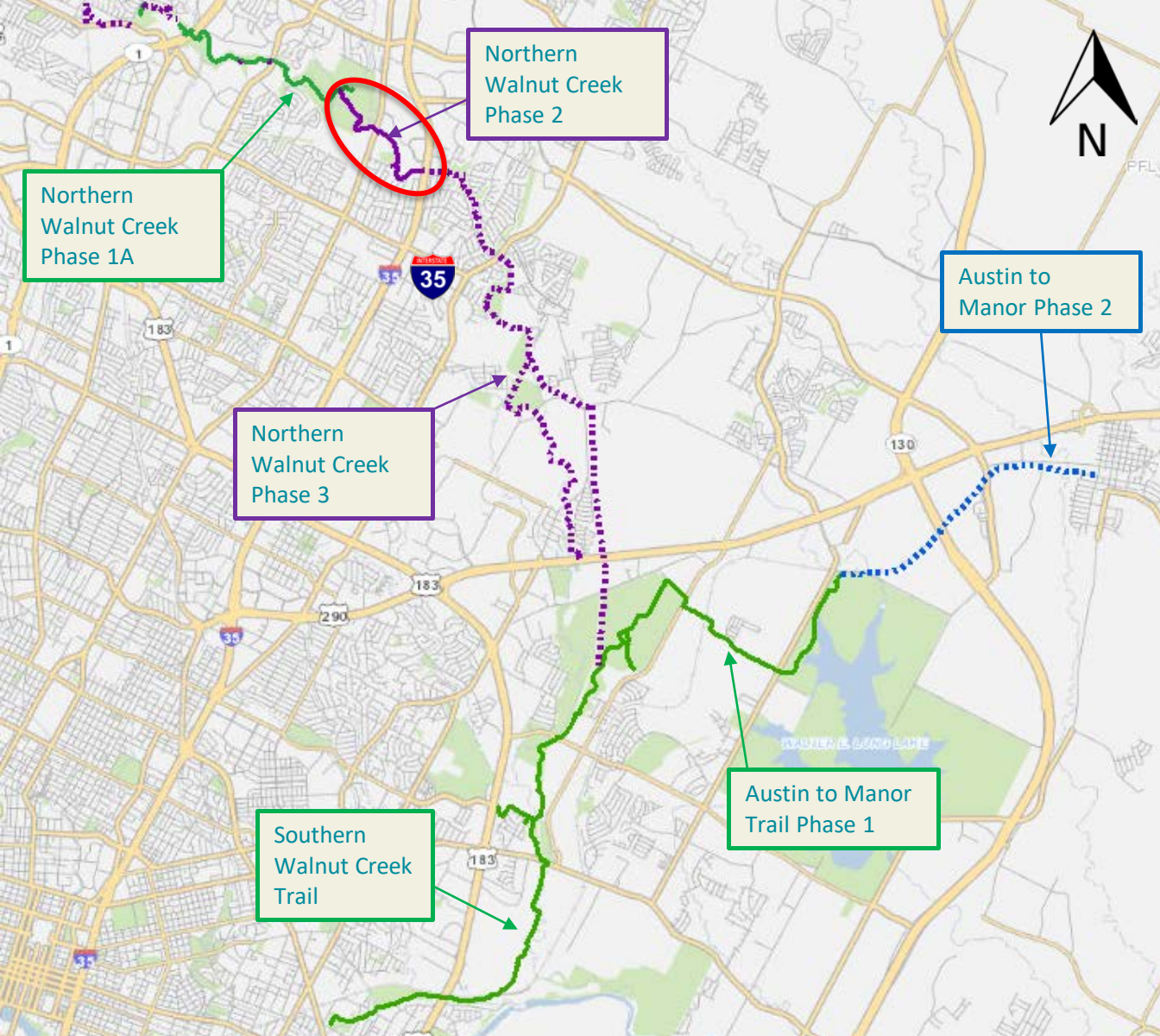


- 2 Public Meetings held in PER phase
- Completed outreach regarding removal of parking on Wickersham Lane
- 1 Public Meeting will be held at 60% Design
- 1 Pre-Construction Meeting will be held
- Landowner engagement
- Urban Trails website
 - <http://austintexas.gov/CountryClubCreekTrail>
 - Project specific newsletter



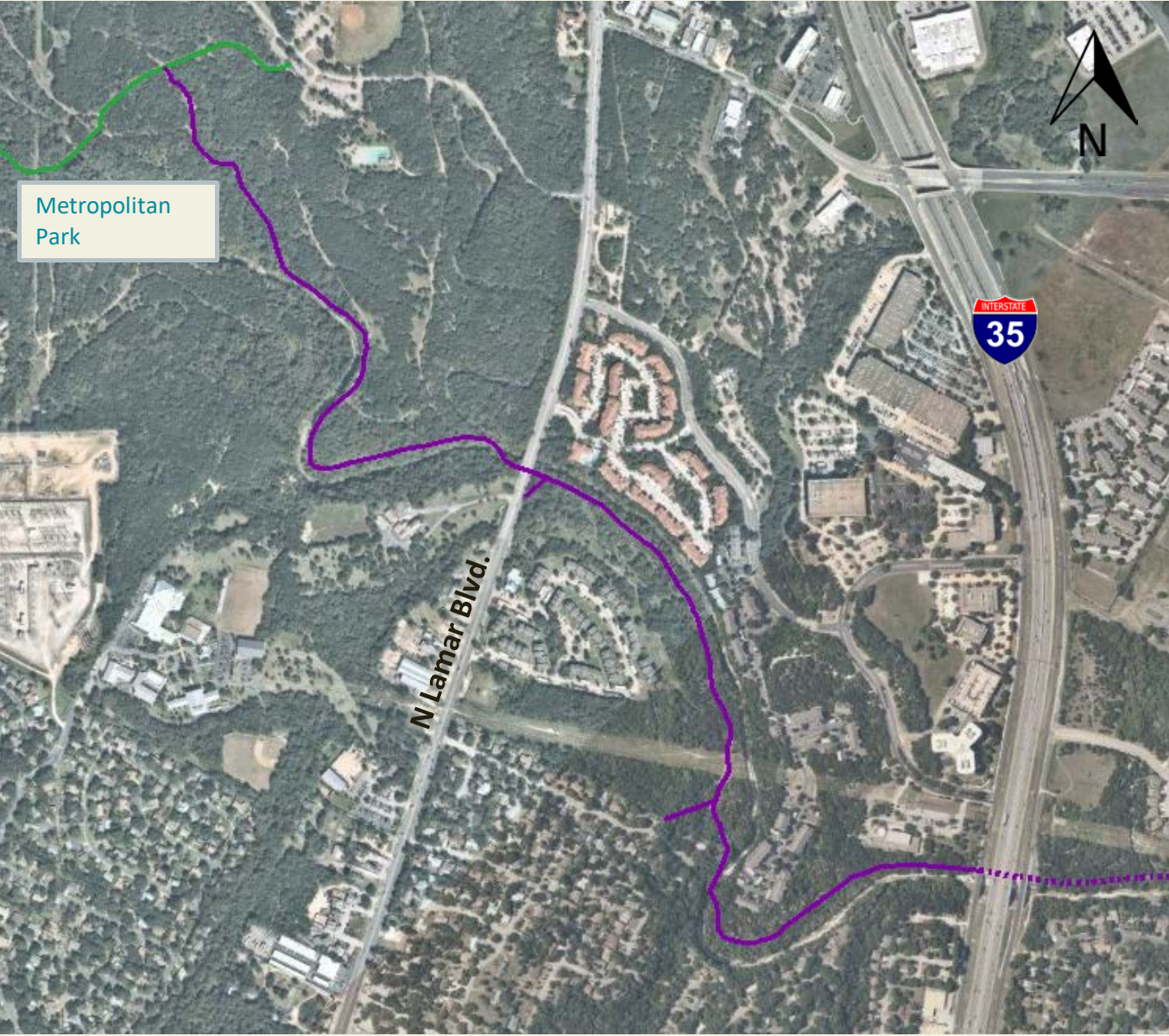
Northern Walnut Creek Trail Ph 2

Walnut Creek
Metropolitan Park –
IH-35



Northern Walnut Creek Trail Ph 2

Walnut Creek
Metropolitan Park –
IH-35



Metropolitan
Park

N Lamar Blvd.

INTERSTATE
35



Northern Walnut Creek Trail Ph 2

Walnut Creek
Metropolitan Park –
IH-35

Project Background



Project Scope

- 12ft wide concrete trail
- 1.67 miles

Project Funding–

- \$6.62M Total Cost
- \$2.5M – 2016 Bond – Design & Construction
- \$1.5M – TxDOT Grant
- \$86,000 PARD 2006 P3
- \$930,000 PARD – Park Dedication

Status – 60% Design

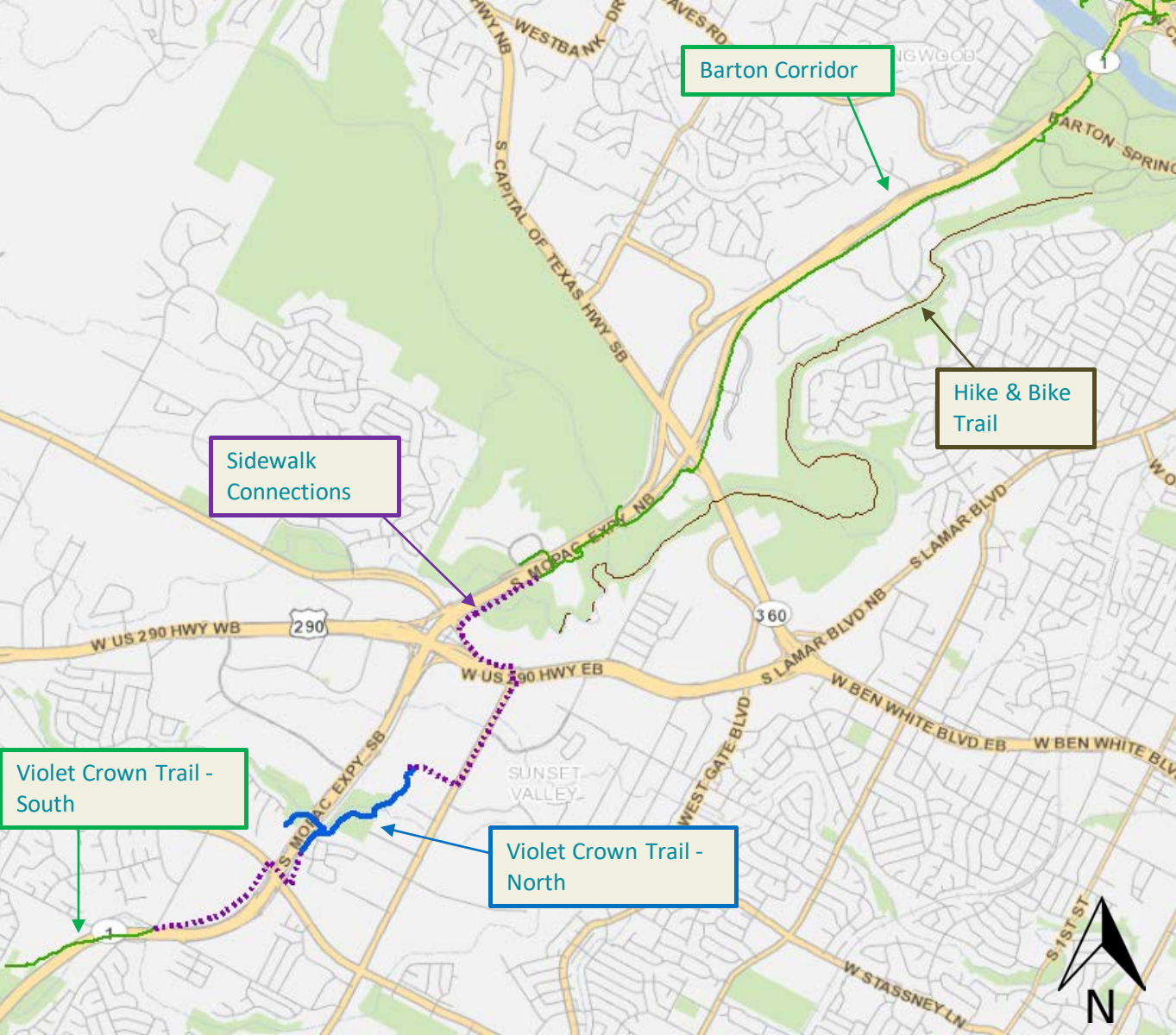
Public Outreach



- April 11, 2017 public meeting – Walnut Creek Elementary
- Next public meeting for 60% Status report – Winter 2019

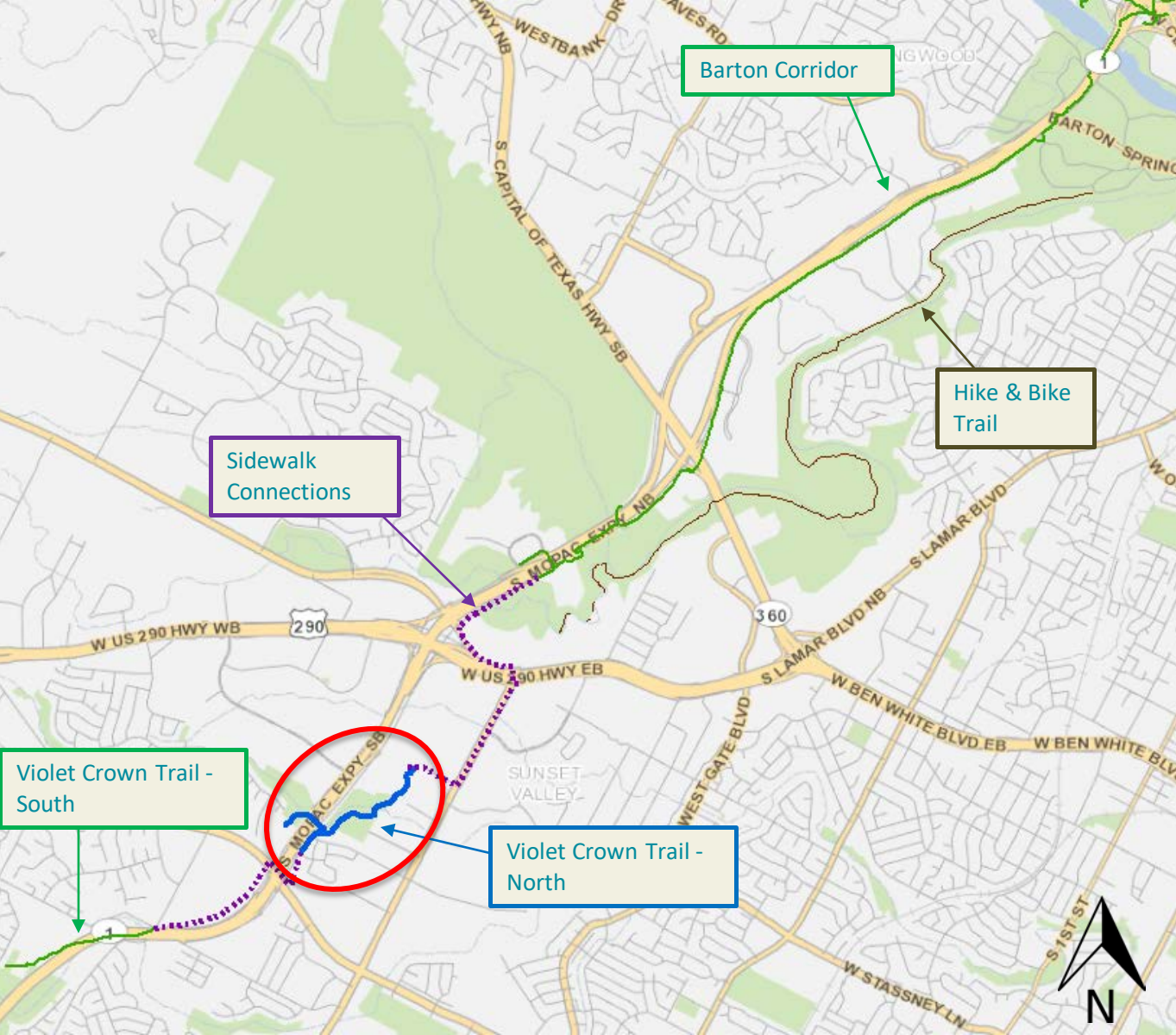
Violet Crown Trail - North

Home Depot Blvd –
MoPac Expressway &
William Cannon Dr



Violet Crown Trail - North

Home Depot Blvd –
MoPac Expressway &
William Cannon Dr





Violet Crown Trail - North

Home Depot Blvd –
MoPac Expressway &
William Cannon Dr

Project Background



Project Scope

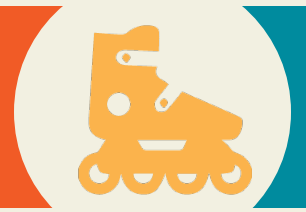
- 10-11ft wide Concrete & Stalok
- 1 mile

Project Funding

- \$2.6M Total Cost – \$1.5M Construction
- \$550,000 - 2012 Bond – Design
- \$1,000,000 - 2016 Bond – Construction
- \$1,200,000 - CAMPO – Construction

Status – 90% Design

Public Outreach



- July 30th 2014 Public Meeting – Hampton Public Library
 - Community feedback lead to change in trail alignment
- Close coordination and engagement from Hill Country Conservancy

All Current Projects



Project	Status
Austin to Manor – Phase 2	60% Design
Bergstrom Spur Study	Planning
Country Club Creek Trail – Phase 2	60% Design
La Loma Trail	90% PER
Northern Walnut Creek Trail – Phase 1A	Construction
Northern Walnut Creek Trail – Phase 2	60% Design
Northern Walnut Creek Trail – Phase 3	50% PER
Red Line Trail – Braker to Walnut Creek *	90% PER
Southern Walnut Creek Renovation	90% Design
Upper Boggy Creek – Red Line Trail	Construction
Violet Crown Trail – North	90% Design
YBC Trail *	10% Design



CITY OF AUSTIN
PUBLIC WORKS DEPARTMENT
CONNECTING YOU ALL AROUND AUSTIN

Questions?

Janae Spence
Urban Trails Program Manager
Janae.Spence@austintexas.gov
512.974.3159

