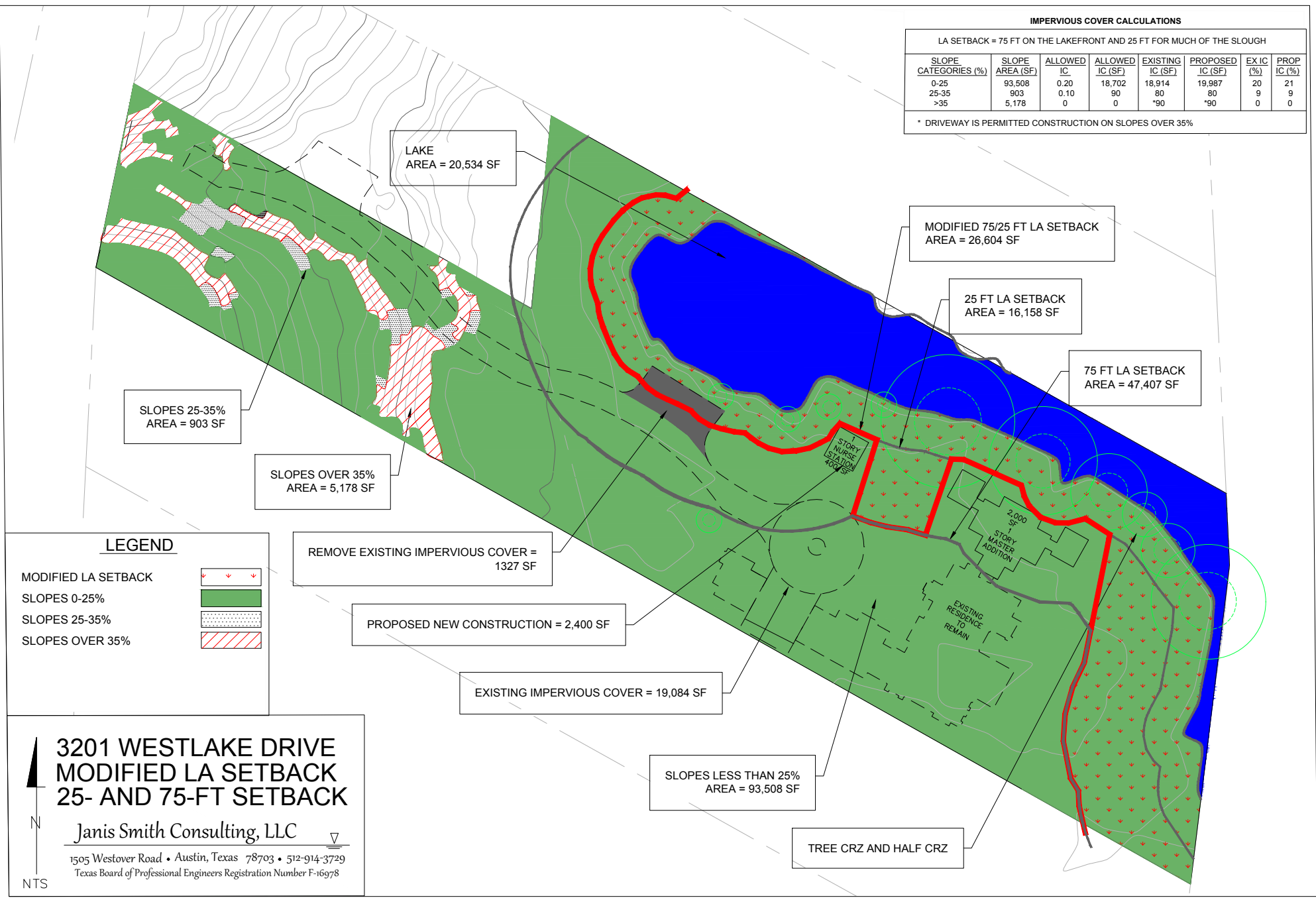


IMPERVIOUS COVER CALCULATIONS

LA SETBACK = 75 FT ON THE LAKEFRONT AND 25 FT FOR MUCH OF THE SLOUGH

SLOPE CATEGORIES (%)	SLOPE AREA (SF)	ALLOWED IC	ALLOWED IC (SF)	EXISTING IC (SF)	PROPOSED IC (SF)	EX IC (%)	PROP IC (%)
0-25	93,508	0.20	18,702	18,914	19,987	20	21
25-35	903	0.10	90	80	80	9	9
>35	5,178	0	0	*90	*90	0	0

* DRIVEWAY IS PERMITTED CONSTRUCTION ON SLOPES OVER 35%



LEGEND

- MODIFIED LA SETBACK
- SLOPES 0-25%
- SLOPES 25-35%
- SLOPES OVER 35%

REMOVE EXISTING IMPERVIOUS COVER = 1327 SF

PROPOSED NEW CONSTRUCTION = 2,400 SF

EXISTING IMPERVIOUS COVER = 19,084 SF

SLOPES LESS THAN 25% AREA = 93,508 SF

TREE CRZ AND HALF CRZ

**3201 WESTLAKE DRIVE
MODIFIED LA SETBACK
25- AND 75-FT SETBACK**

Janis Smith Consulting, LLC
 1505 Westover Road • Austin, Texas 78703 • 512-914-3729
 Texas Board of Professional Engineers Registration Number F-16978

