

West Campus Lighting Study

Staff update for Pedestrian Advisory Council

January 7th, 2019

Joel Meyer | Pedestrian Coordinator

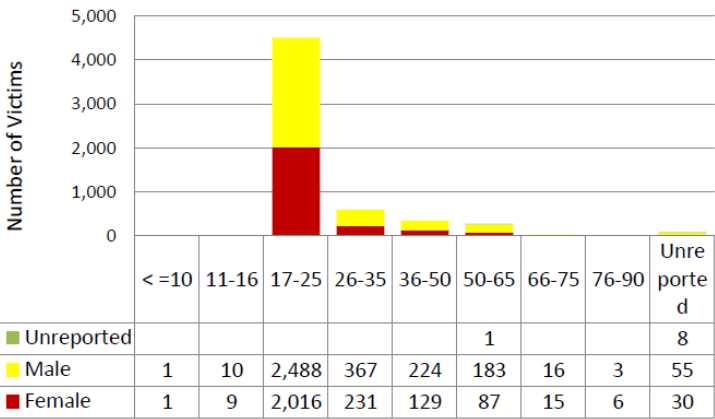
Austin Transportation Department

joel.meyer@austintexas.gov

West Campus Lighting Study

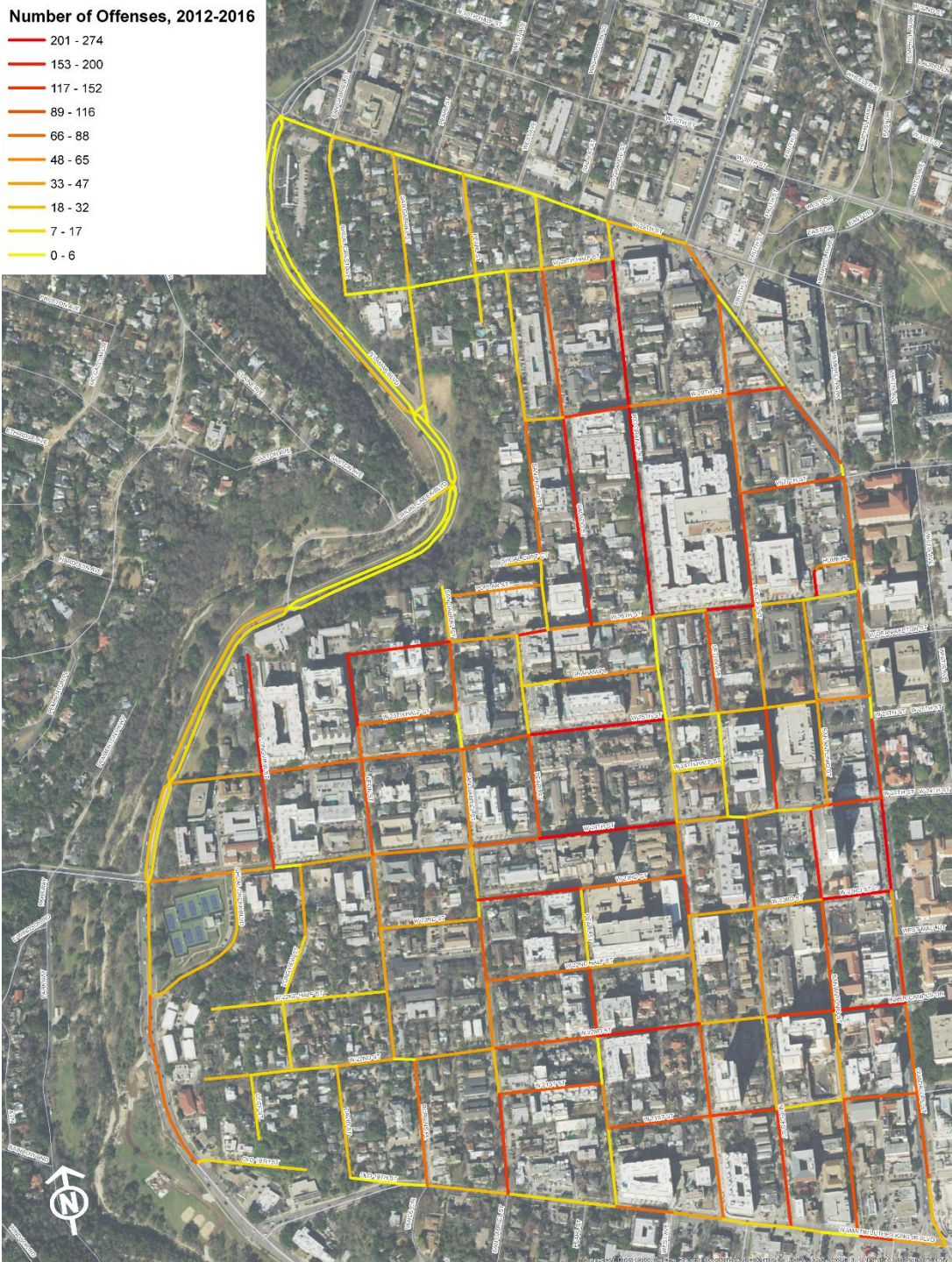
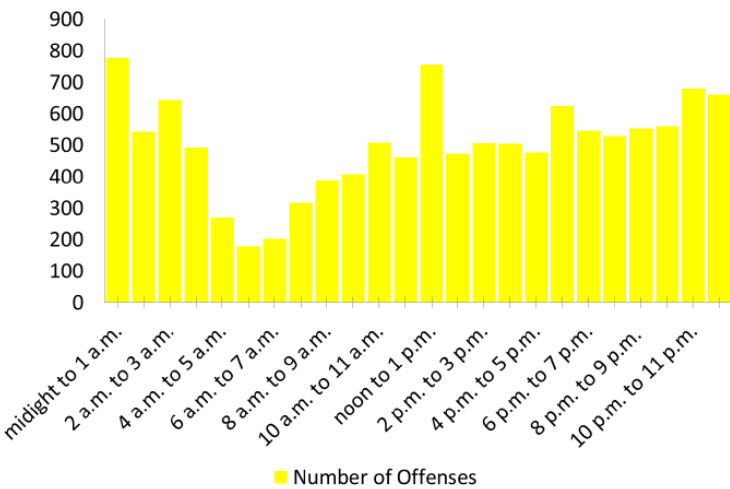
Victim Age and Sex, West Campus

APD, 2012-2016



Offenses by Time Of Day, West Campus

APD, 2012-2016

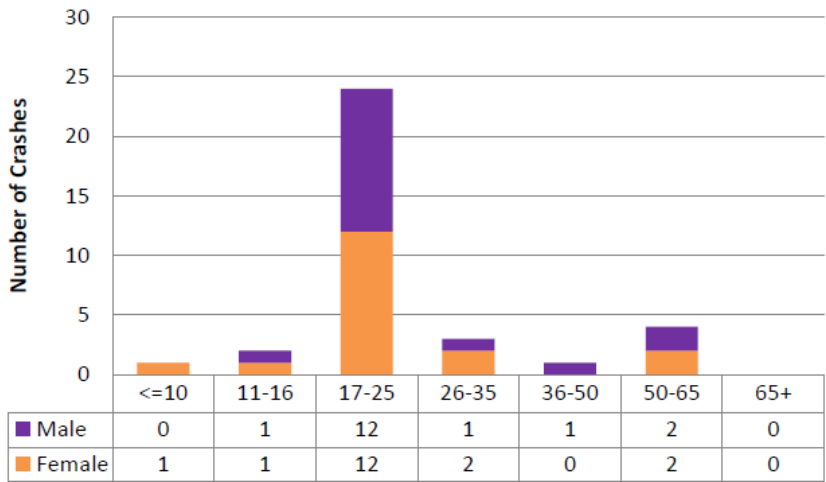


The data provided is for informational use only and is not considered official APD crime data as in official Texas DPS or FBI crime reports. APD's crime database is continuously updated, so reports run at different times may produce different results. Care should be taken when comparing against other reports as different data collection methods and different data sources may have been used. The Austin Police Department does not assume any liability for any decision made or action taken or not taken by the recipient in reliance upon any information or data provided.

West Campus Lighting Study

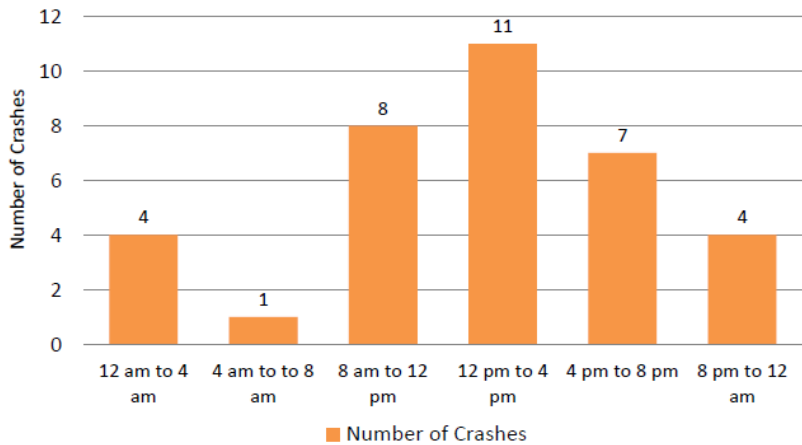
Crash Victim Age and Sex, West Campus

CRIS, 2012-2016



Pedestrian Crashes by Time Of Day, West Campus

CRIS, 2012-2016



West Campus Lighting Study



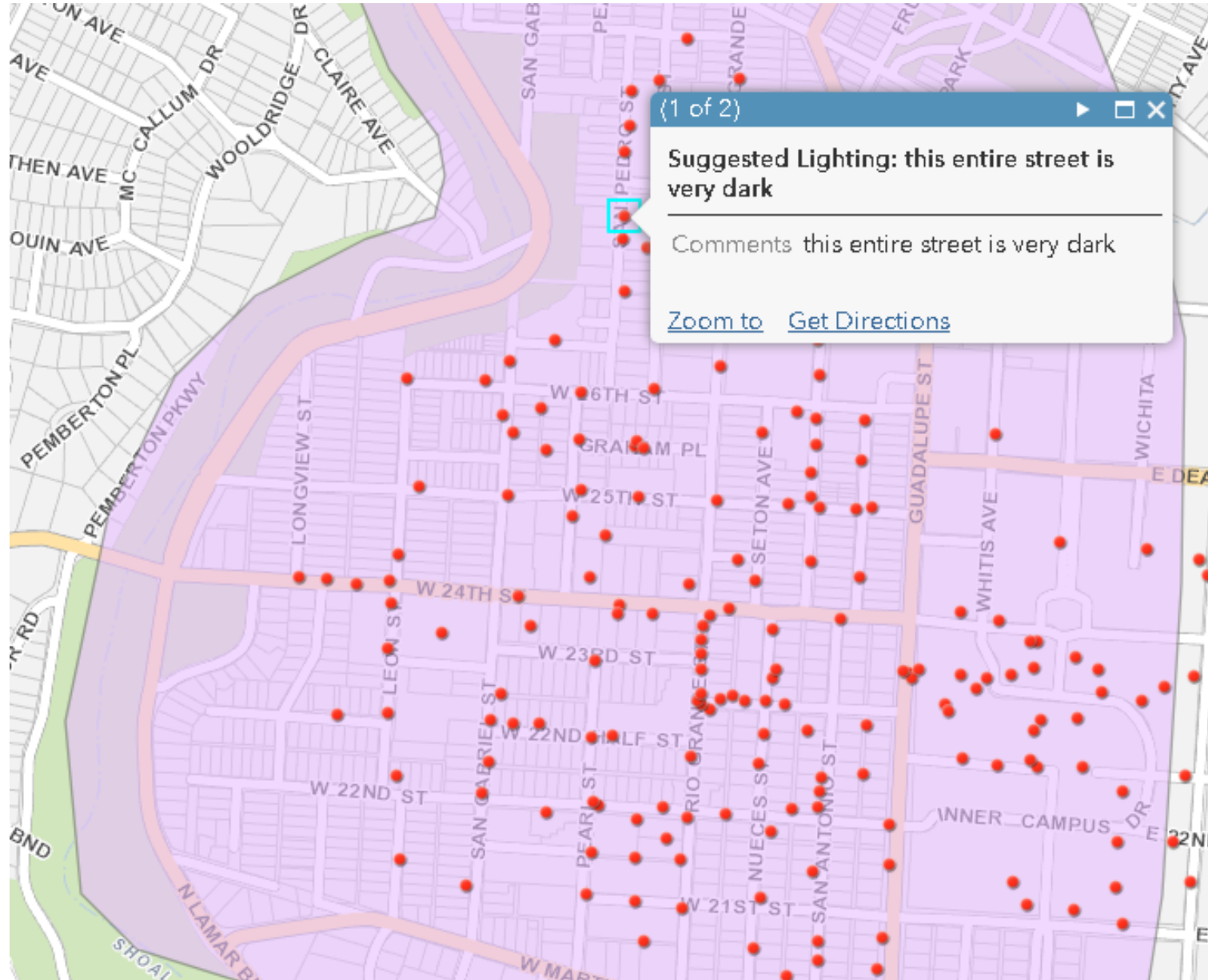
West Campus Neighborhood Night Walk, Jan. 2018

West Campus Lighting Study

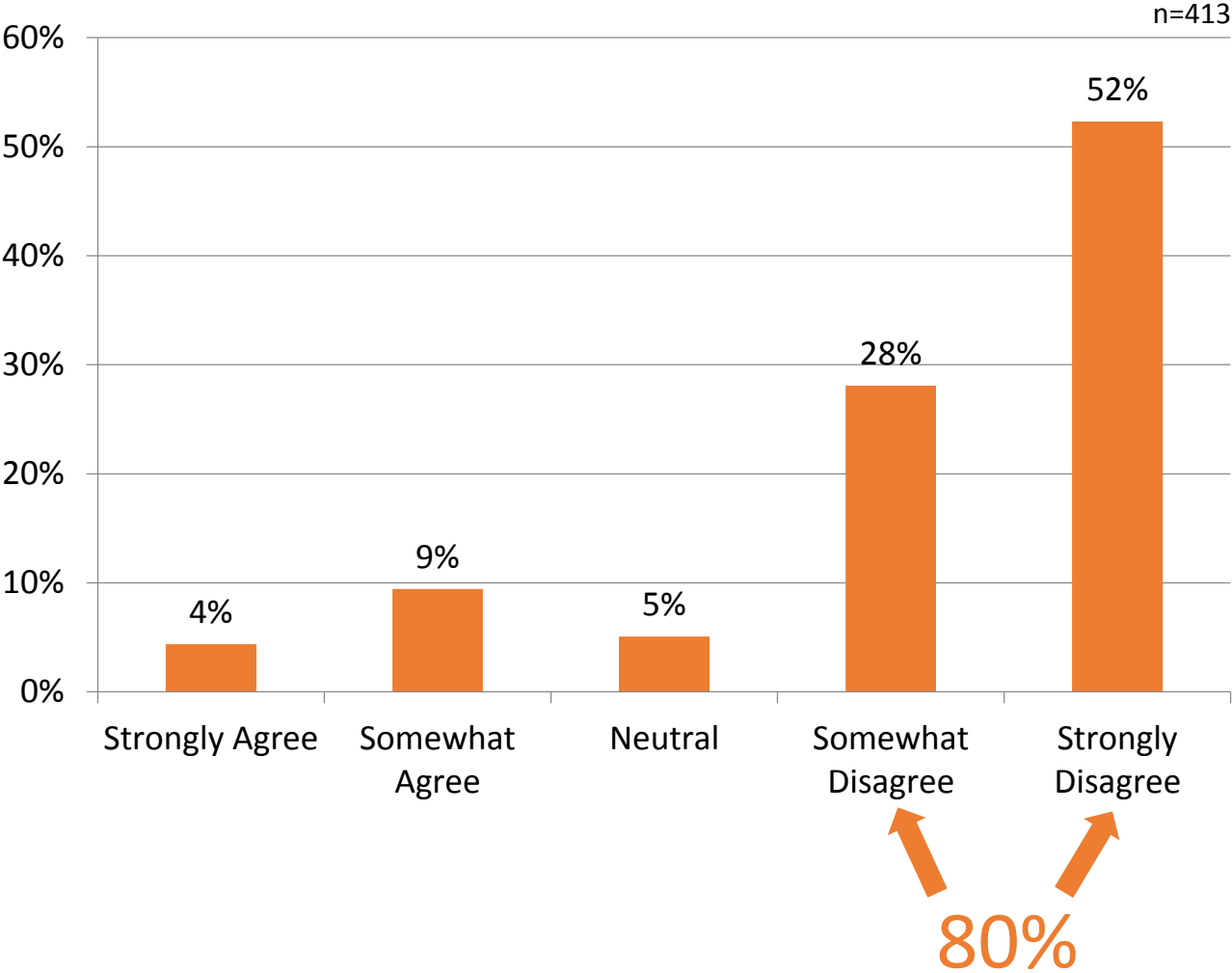


West Campus Neighborhood Night Walk, Jan. 2018

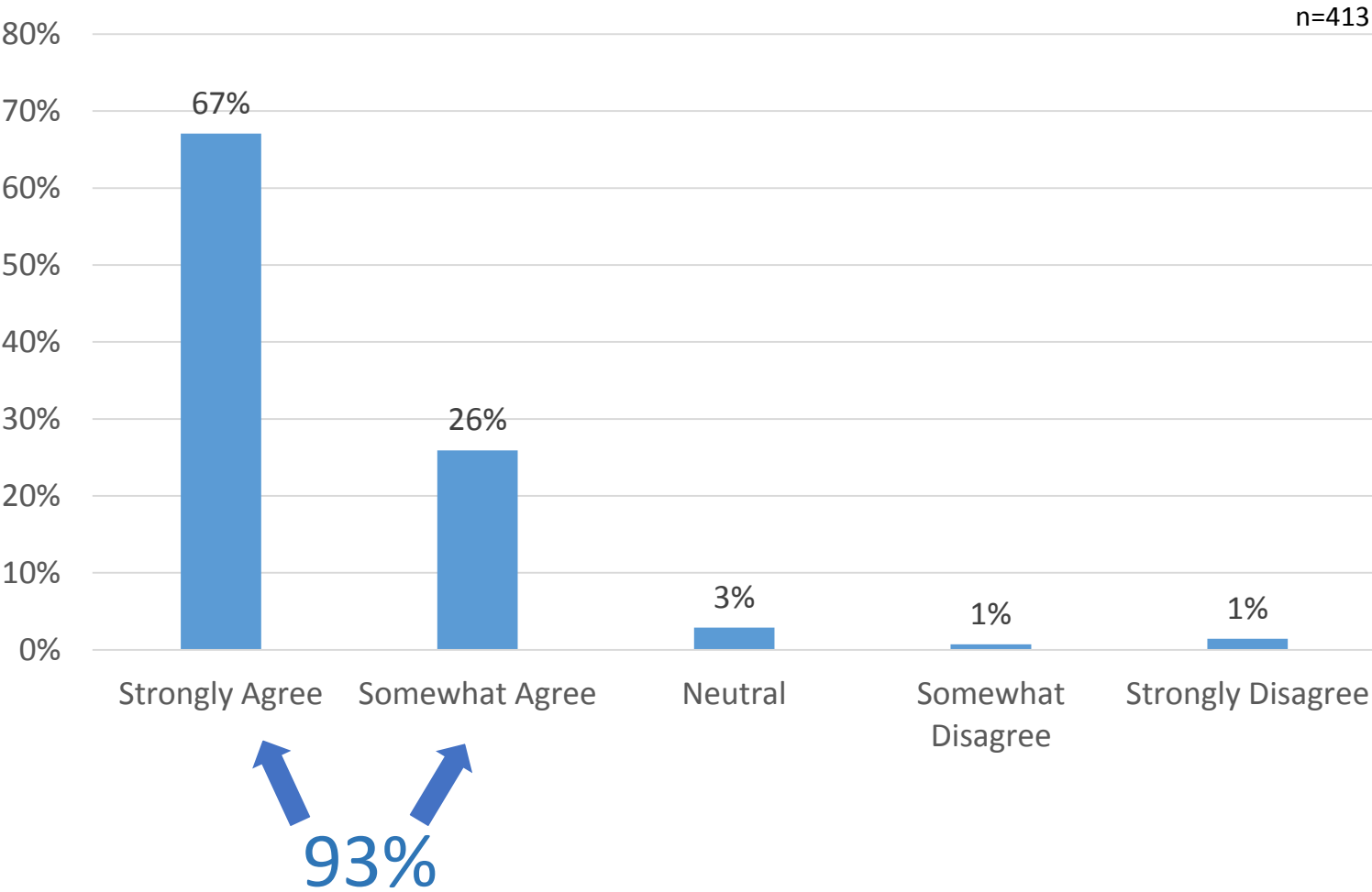
West Campus Lighting Study



Agree or Disagree?
“Existing street lighting in West Campus
is adequate for people walking at night.”



Agree or Disagree?
“In terms of personal safety and security, better or more lighting in West Campus would make me feel safer walking at night.”



West Campus Lighting Study



West Campus Lighting Study

Findings:

- 3% of existing lighting fixtures require immediate maintenance due to vandalism, weathering, physical damage, or absence of a fixture entirely.
- 8% were obstructed by trees or other objects.
- Nearly 10 percent were non-operational due to unknown factors.

Note that the lighting inventory represents a snapshot in time, and that ongoing construction activity in the neighborhood may have influenced whether a given fixture was turned on at the time of the inventory.



West Campus Lighting Study

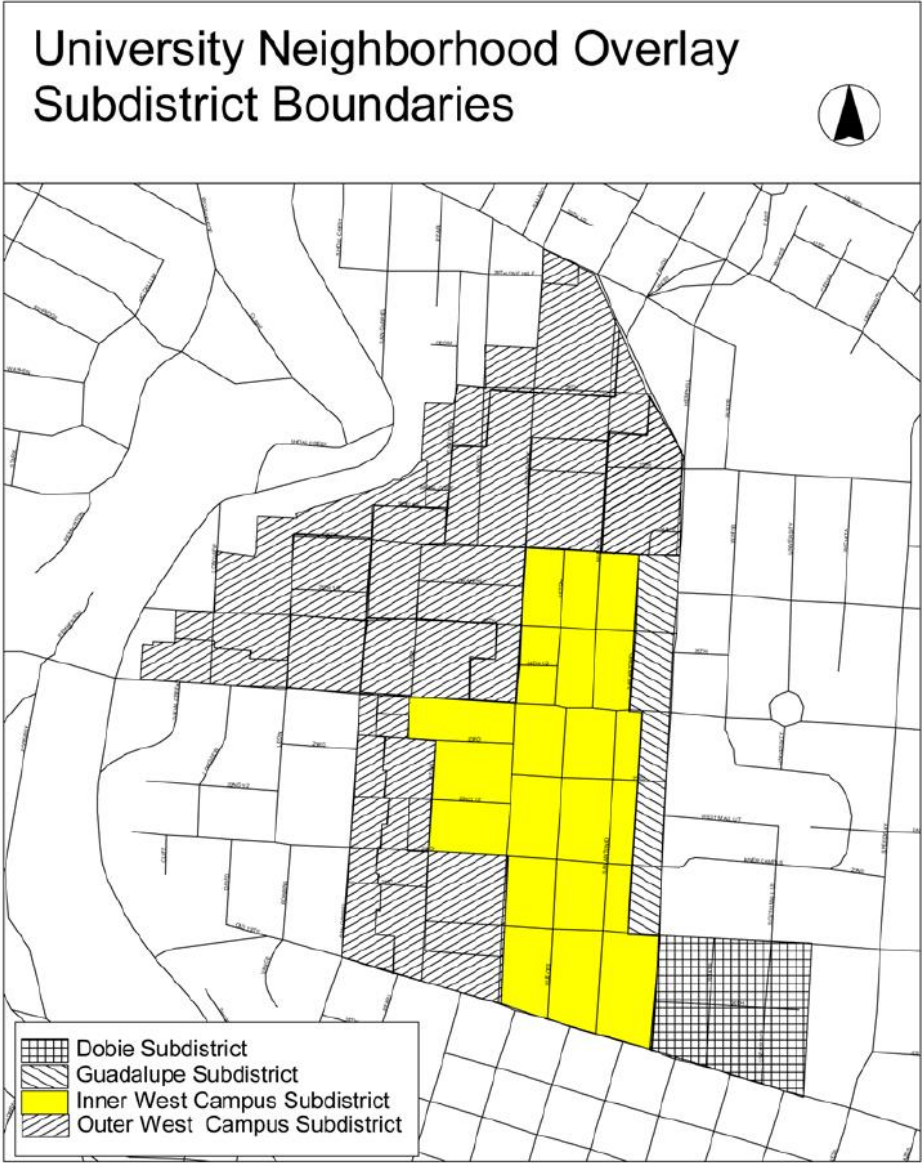
Findings:

- Approximately 228 new fixtures are needed to bring each block in the West Campus study area up to recommended lighting levels.
- ~\$580,000 for the fixtures themselves
- Additional costs for design, civil work, extra wire, a power source, permitting fees, or other infrastructure needed to install the lighting.
- Total estimated cost of \$1.7 million to \$2.3 million



Photo: Daily Texan

West Campus Lighting Study



West Campus Lighting Study



West Campus Lighting Study

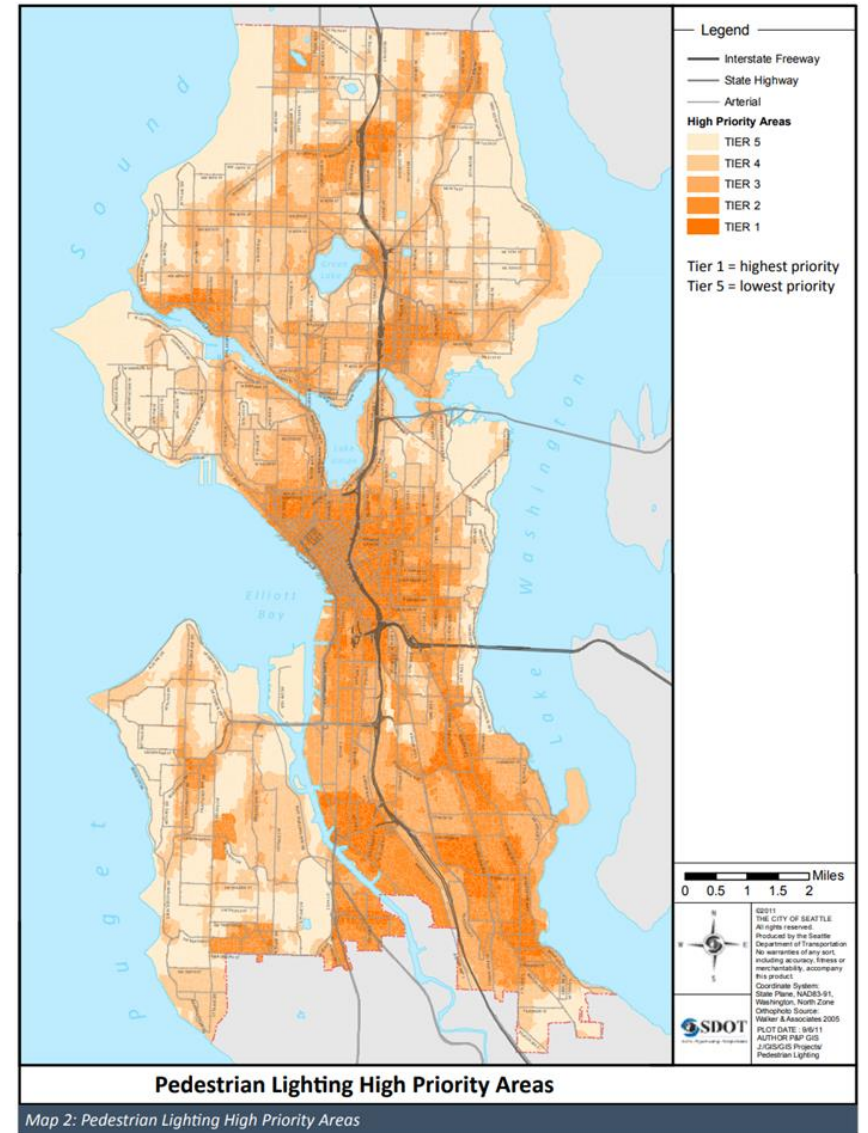
Study Recommendations:

Short Term

- Repair non-functioning fixtures
- Trim back trees obstructing existing lighting
- Construct additional lights needed to fill gaps
- Adopt accelerated LED re-lamping schedule
- Explore formation of a working group to address larger safety concerns in West Campus

Long term:

- Develop a Citywide Lighting Plan to serve as a holistic and sustainable strategy to improve lighting throughout Austin.



Seattle Pedestrian Lighting Citywide Plan

West Campus Lighting Study

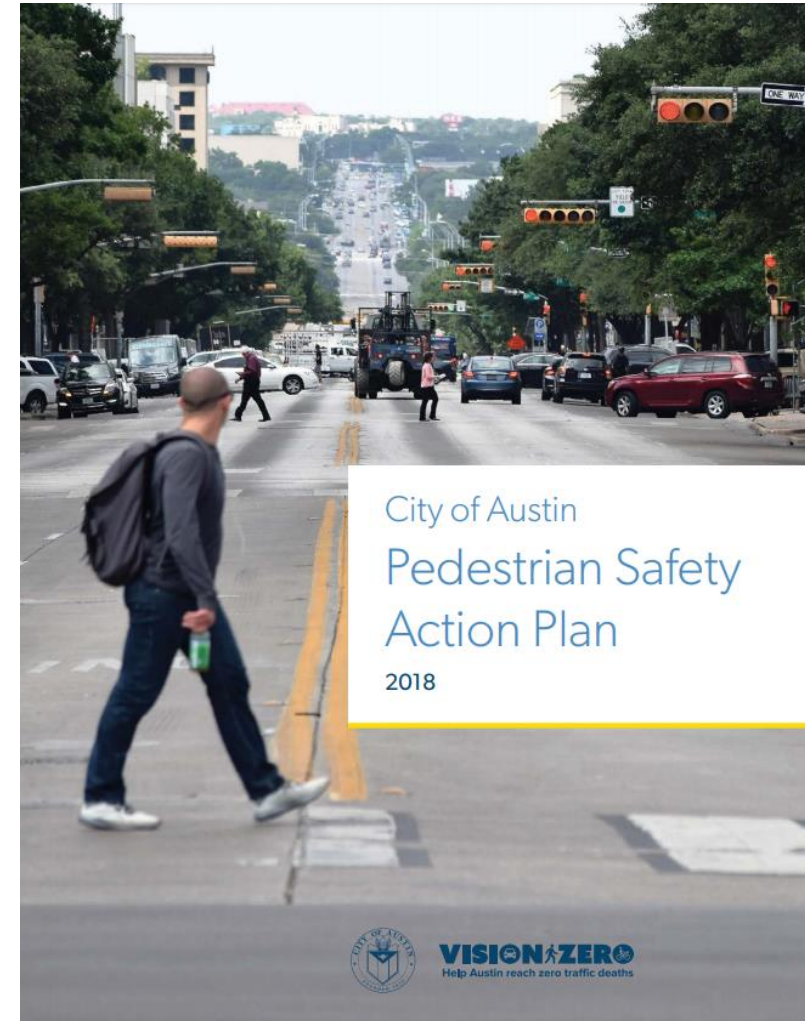
Next Steps:

- Finalize recommendations to Mayor and Council
- Begin implementing recommendations

Lighting and Pedestrian Safety

- In Austin, 82% of pedestrian fatalities and 56% of serious injuries occurred in dark conditions (2010-2015) (PSAP).
- The presence of street lighting was associated with an 8 percentage point reduction in the probability that pedestrian crashes occurring in otherwise dark conditions would result in a fatality or incapacitating injury (PSAP).
- Nighttime crash reduction factors for intersection lighting (all modes):
 - New lighting: 50% reduction
 - Upgraded lighting: 25% reduction

https://safety.fhwa.dot.gov/intersection/other_topics/fhwasa09020/chap_4.cfm



West Campus Lighting Study

Staff update for Pedestrian Advisory Council

January 7th, 2019

Joel Meyer | Pedestrian Coordinator

Austin Transportation Department

joel.meyer@austintexas.gov