

Brush Square Master Plan

Parks and Recreation  
Department

City of Austin

# Brush Square Master Plan

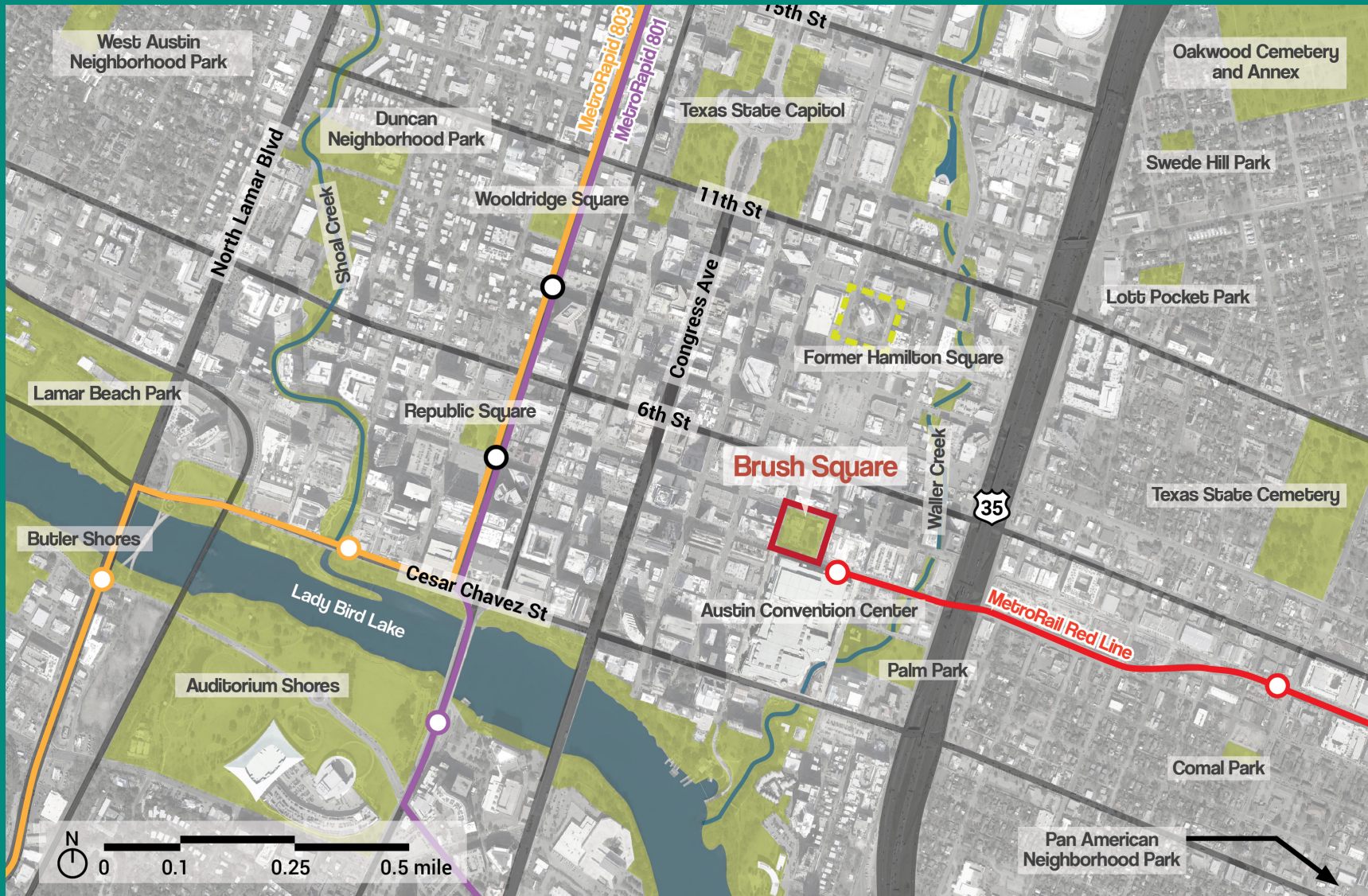
Presentation to boards, commissions, and City Council

For link to full plan, visit: <https://www.austintexas.gov/BrushSqMP>



## Brush Square Master Plan

# Context

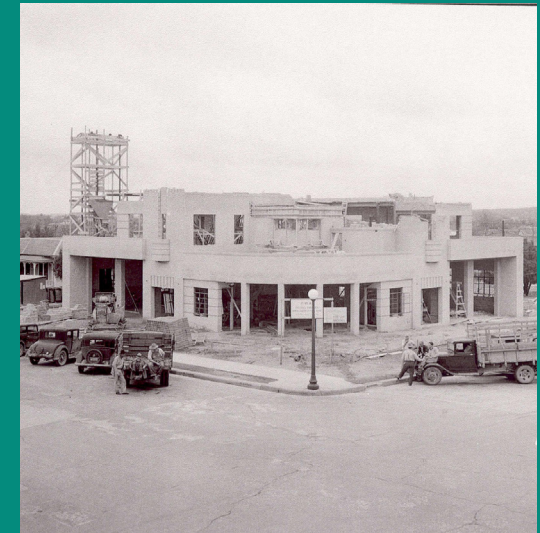
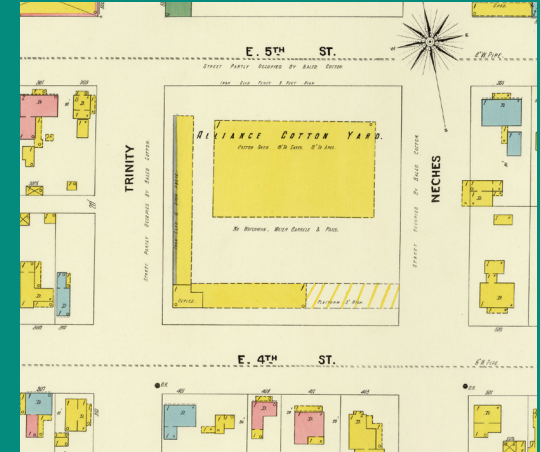
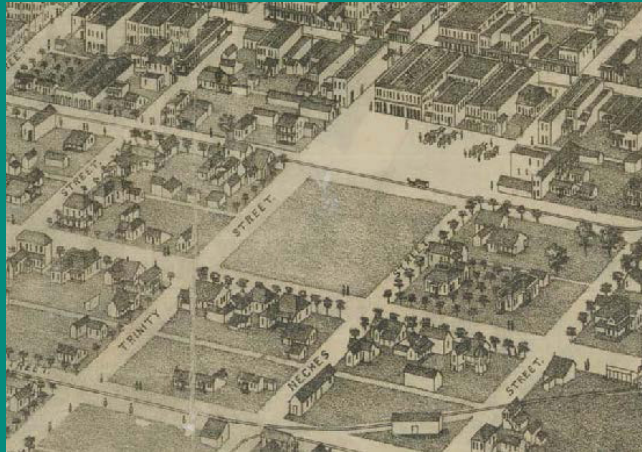




## Brush Square Master Plan

# History

- Seba Bogart Brush, cotton yards (prior to 1874)
- Alliance Cotton Yard (as late as 1900)
- Train tracks north of square (~1870's)
- Susanna Dickinson (active 1870s, structure added 2003) and O. Henry (active 1893-95, structure added 1934)
- Offices for Texas Department of Health (1930s)
- Central Fire Station (1938)
- Parking lot (1950s-60s)
- Southern Pacific locomotive moved to site (1956, since removed)





## Brush Square Master Plan

# Existing Conditions





# Ongoing Projects

### Ongoing Projects

- Downtown Station and Related Improvements
- Old Depot Hotel Mixed-Use Project
- Hilton Hotel Overhead Walkway
- Public Restroom Pilot
- East 5th Street Two-Way Conversion
- Fire Station #1 Relocation
- Austin Convention Center Long-Range Master Plan
- Waller Creek District Master Plan

### Recent Initiatives

- Our Austin Story
- Downtown Austin Vision Plan
- Urban Land Institute Technical Assistance Panel: Capital Metro: Downtown Multimodal Station Special Report
- Project Connect Long-Range Plan
- CapMetro Connections 2025
- Downtown Austin Wayfinding Master Plan (2013)
- The Downtown Austin Plan: Downtown Parks and Open Space Master Plan
- City of Austin Parks and Recreation Long Range Plan for Land, Facilities and Programs
- Imagine Austin





## Brush Square Master Plan

# Engagement

### Community Meeting 1



- April 7, 2018
- Susanna Dickinson Museum
- ~25 people

### Community Meeting 2



- June 16, 2018
- Brush Square
- ~35 people

### Future of Downtown Parks



- October 31, 2018
- Sunset Room
- ~150 people



## Brush Square Master Plan

# Engagement

### Planning Partners



- Austin Convention Center
- Austin Parks Foundation
- Brush Square Museums Foundation
- Congress for New Urbanism - CTX Chapter
- Downtown Austin Alliance
- Downtown Austin Neighborhood Association
- Hilton Austin
- Preservation Austin
- SXSW
- Travis County Historical Commission
- University of Texas-Austin Center for Sustainable Design
- Visit Austin
- 555 Homeowners Association

### Technical Advisory Group



- PARD Operations and Maintenance
- PARD Special Events
- PARD Park Development
- PARD Museums and Cultural Centers
- PARD Asset Management
- PARD Urban Forestry
- COA Urban Design
- Brush Square Museums
- Art in Public Places
- ATD
- Cap Metro
- AFD
- APD

### Additional Outreach



- 2 surveys (373 total responses)
- 2018 O. Henry Pun-Off
- Downtown Farmer's Market
- Focus Groups
- Intercept Outreach



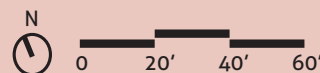
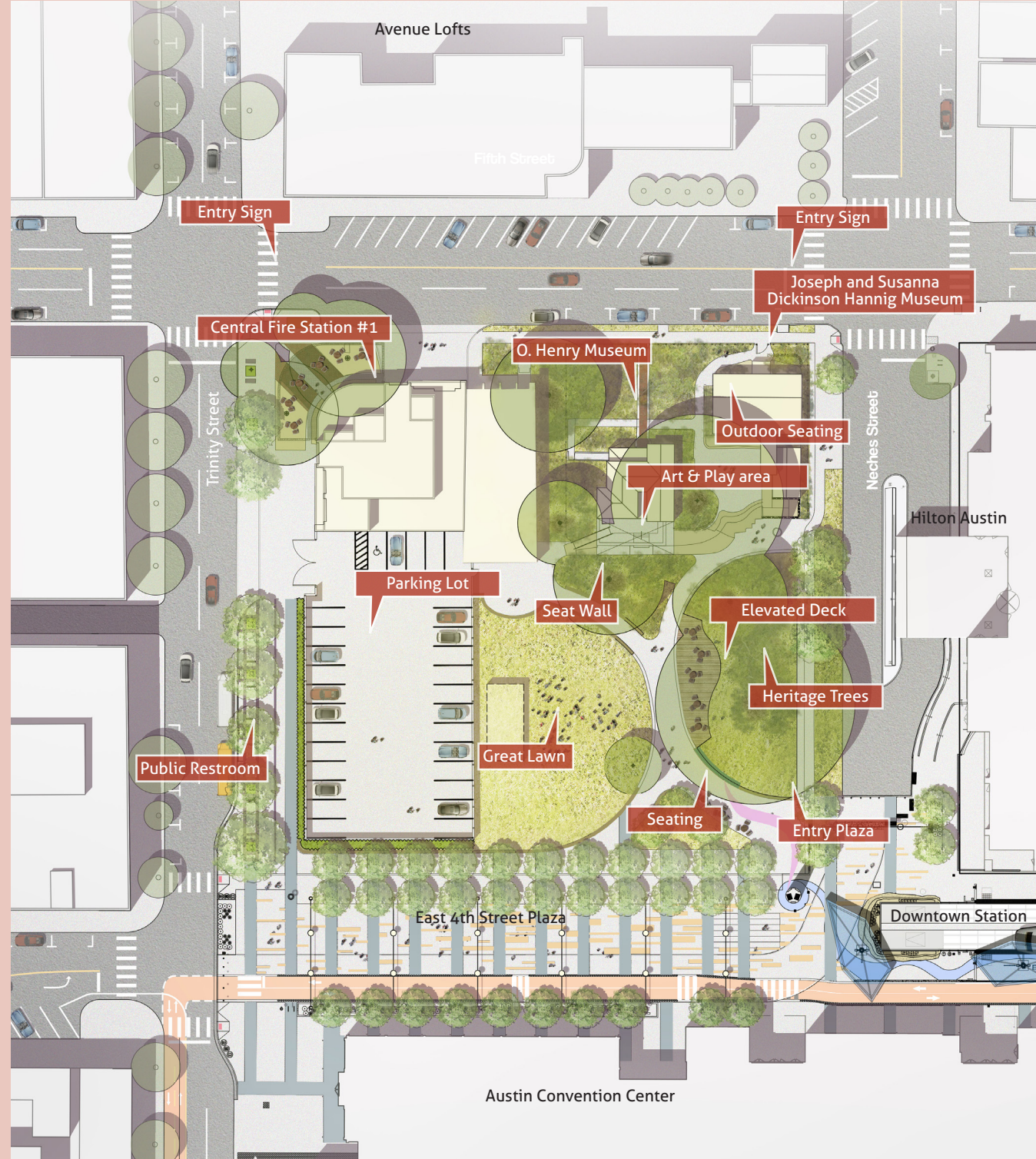
# Design Principles

- Ensure that the first phase of improvements results in a high quality open space befitting the historic stature of Brush Square.
- Improve the usability of the open space by reducing the footprint and impact of the parking lot.
- Improve circulation and visual access to and through the square and enhance the quality of the pedestrian environment with improved streetscapes and shade.
- Provide opportunities for passive and reflective uses while allowing for major civic celebrations.
- Protect existing trees and improve the ecological health, natural beauty, and environmental quality of the square.
- Preserve and enhance the existing museums and cultural assets.

## Brush Square Master Plan

# Preferred Concept Plan Phase 1

- Maintain operating Fire Station #1
- Relocate, reconstruct and better screen parking lot to increase usable park space
- Accessibility, circulation, lighting, and signage improvements
- Create “water wall” signature feature at southeast entry
- Additional tree planting
- Opinion of Probable Cost: \$3,101,328



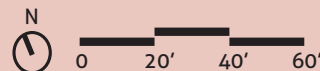
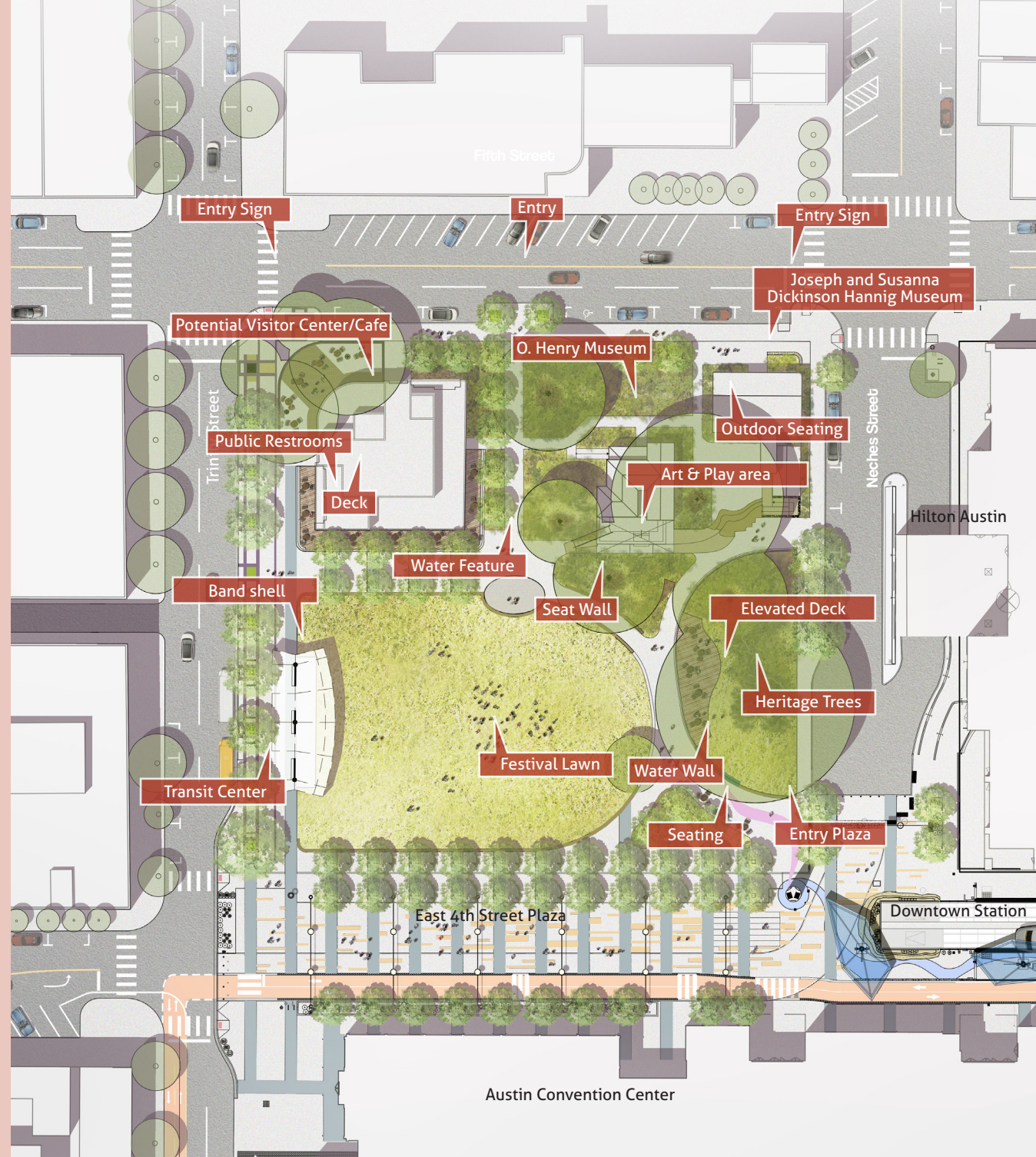
Preferred Concept - Phase I



## Brush Square Master Plan

# Preferred Concept Plan Phase 2

- Remove parking lot for park expansion
- Remove fire station annex to highlight original building and enhance entrance to the park
- Adapt historic fire station as a visitor center and cafe with indoor and outdoor seating
- Construct festival lawn with permanent band shell for events
- Increase access and visibility to Square
- Opinion of Probable Cost: \$2,693,874





## Brush Square Master Plan



View facing northwest from MetroRail Downtown Station (Phase II)



## Brush Square Master Plan



View facing southwest behind Dickinson Museum (Phase II)



## Brush Square Master Plan

# Implementation

### 1. Coordinate With Ongoing Improvement Projects\*

Phase	Partners
0-I	City of Austin, CapMetro, DAA, APF, ACCD, Waller Creek Conservancy

### 2. Secure Funding to Advance Phase I Design and Construction\*

Phase	Partners
I	PARD

### 3. Expedite Design and Construction of Phase I\*

Phase	Partners
I	PARD

### 4. Support Fire Station Relocation

Phase	Partners
II	Austin Fire Department, PARD

### 5. Determine Austin Convention Center Expansion Plans\*

Phase	Partners
I-II	Austin Convention Center, Economic Development Department, PARD

### 6. Consider partnership with Cap Metro to identify the downtown station with Brush Square\*

Phase	Partners
0-I	City of Austin, CapMetro, DAA

### 7. Coordinate with Trinity Street Changes\*

Phase	Partners
II	CapMetro, Transportation Department, PARD, DAA

### 8. Think Comprehensively About the Brush Square District\*

Phase	Partners
0-II	City of Austin, DAA, Visit Austin, Convention Center, Waller Creek Conservancy, others

### 9. Use Museums to better support park activity

Phase	Partners
0-II	City of Austin

\* Priority project



# Implementation

- Phase I implementation to begin in 2019
- Phase II—cannot be implemented until fire department is relocated
- Enhanced maintenance, operations and security
- Potential for partnerships and programming