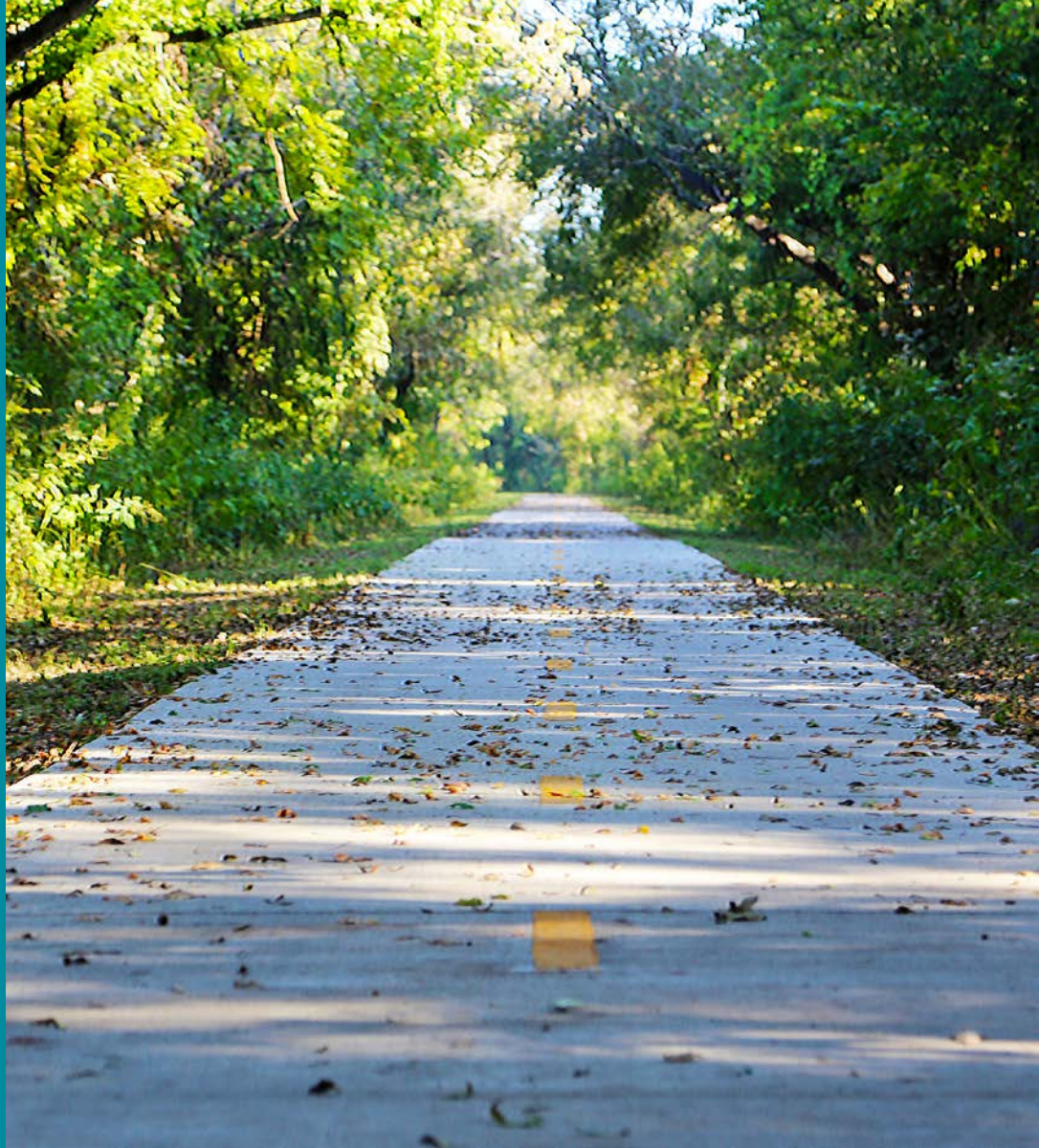


CITY OF AUSTIN
PUBLIC WORKS DEPARTMENT

Urban Trail Project Updates

CONNECTING YOU
ALL AROUND AUSTIN



Agenda

- **Urban Trails Program Overview**
- **Urban Trails Plan requirements**
- **Project Updates**
 - **Country Club Creek Trail – Elmont Dr. to Oltorf St.**
 - **Northern Walnut Creek Trail Ph 2- Walnut Creek Park to IH-35**
 - **Austin to Manor Trail Ph 2 – Lindell Ln to Manor**
 - **Violet Crown Trail North- William Cannon to Home Depot Blvd**

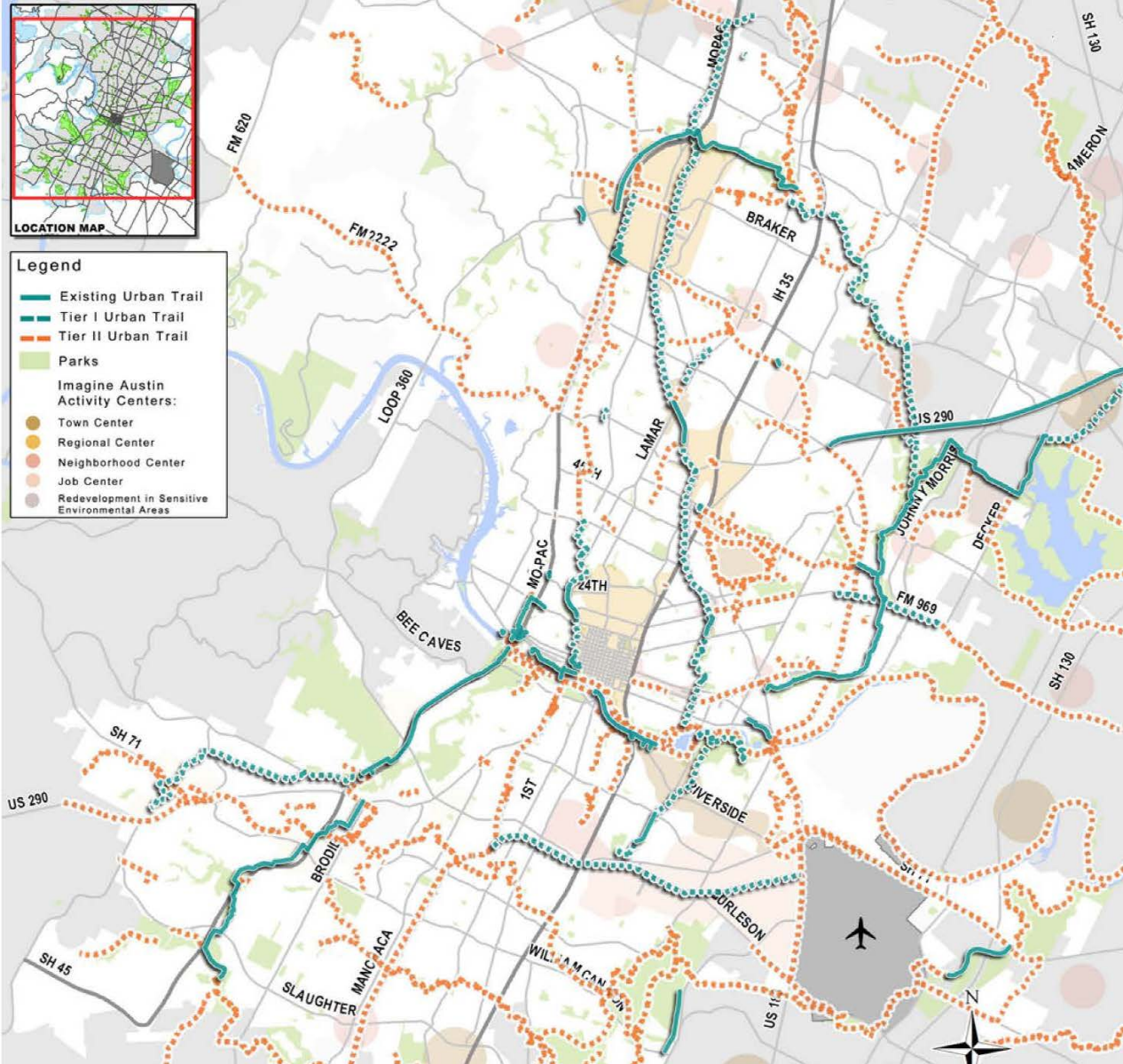
Goals of Urban Trail Program

1. Easy **access** to transportation + recreation users from all parts of the City.
2. **Connect** to on-street bicycle + sidewalk networks.
3. **Adequate width** to accommodate transportation + recreation users.
4. Include **trail amenities/features** that create unique greenways.
5. **Adequate funding** and resources to **maintain + operate**.
6. **Context-sensitive, environmentally sustainable, preservation + improvement upon wildlife habitat.**

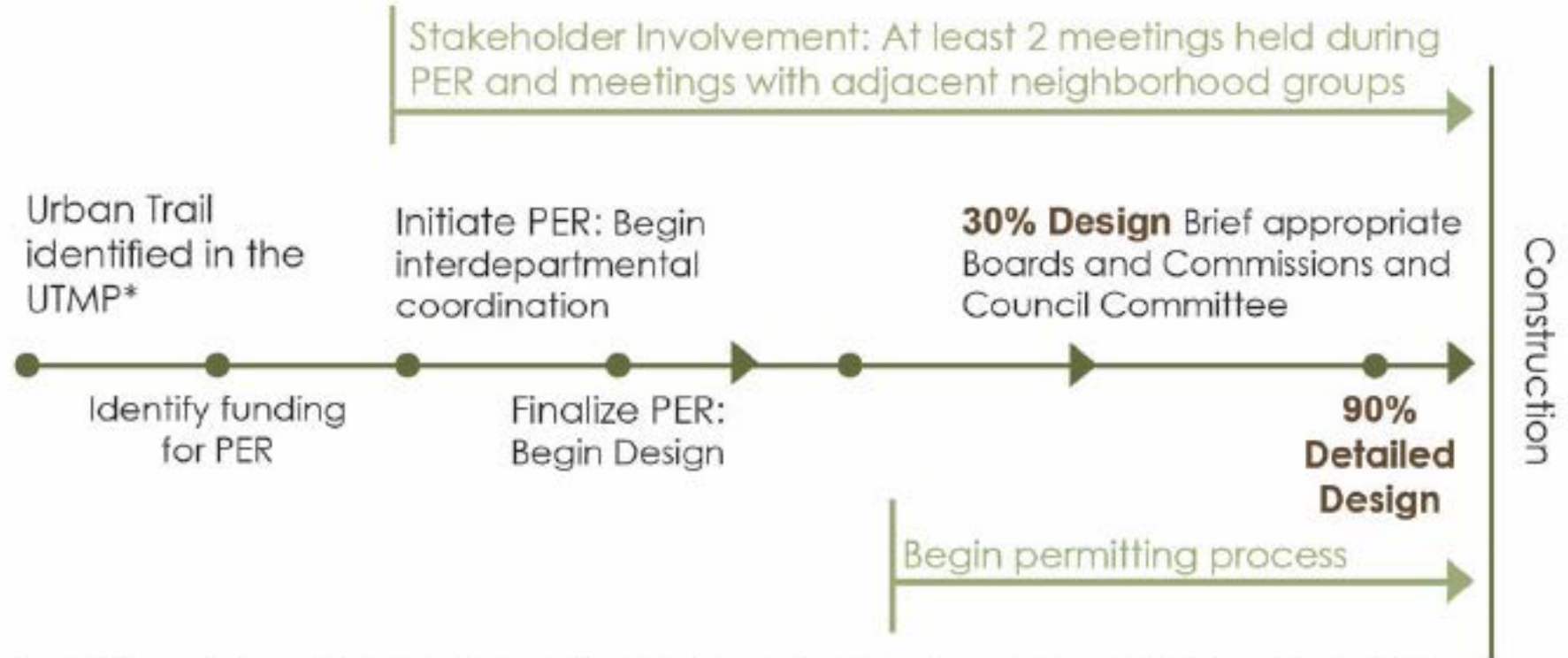


Urban Trail Plan

- Completed October 2014
- 47 Miles -Tier I
- 360 Miles- Tier II



Urban Trail Implementation Plan



*Tier II Urban Trails were identified during the UTMP or previous planning processes. Development of Tier II Urban Trails will occur upon adjacent development, planning, or land use changes. All Urban Trails identified in the UTMP are conceptual in nature. Specific routing for Urban Trails is determined during the PER and design phases.

Urban Trail Implementation Plan



*Tier II Urban Trails were identified during the UTMP or previous planning processes. Development of Tier II Urban Trails will occur upon adjacent development, planning, or land use changes. All Urban Trails identified in the UTMP are conceptual in nature. Specific routing for Urban Trails is determined during the PER and design phases.

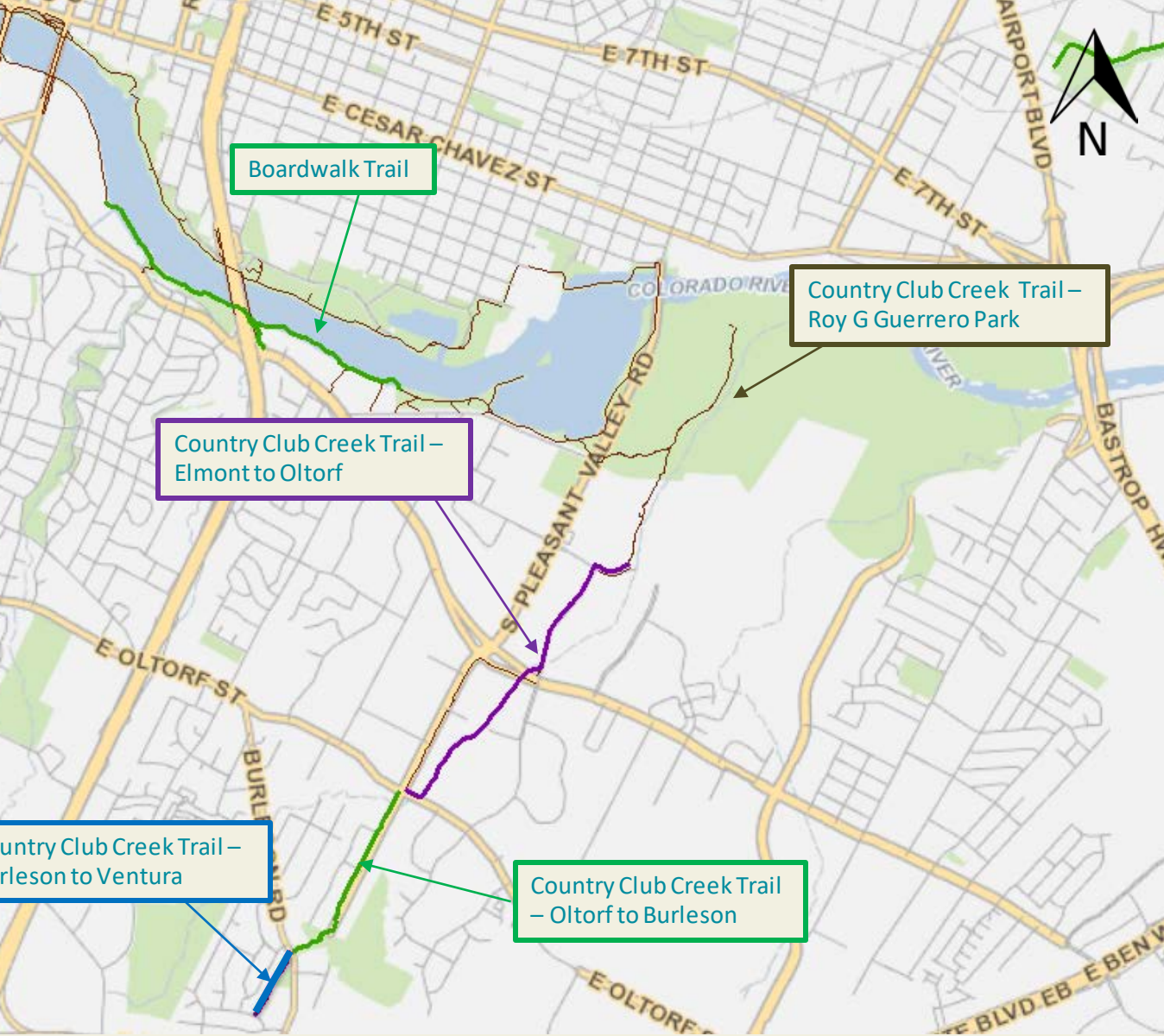
Project Briefings



- **Dec. 3, 2018 - Pedestrian Advisory Council**
- **Dec.11, 2018– Urban Transportation Commission**
- **Dec. 18, 2018 – Bicycle Advisory Council**
- **Feb. 28, 2019 – Mobility Committee**
- **April 3, 2019 – Environmental Commission (Tentative)**
 - Country Club Creek Trail – Elmont Dr. to Oltorf St.
 - Violet Crown Trail North- William Cannon to Home Depot Blvd
 - Northern Walnut Creek Trail Ph 2- Walnut Creek Park to IH-35

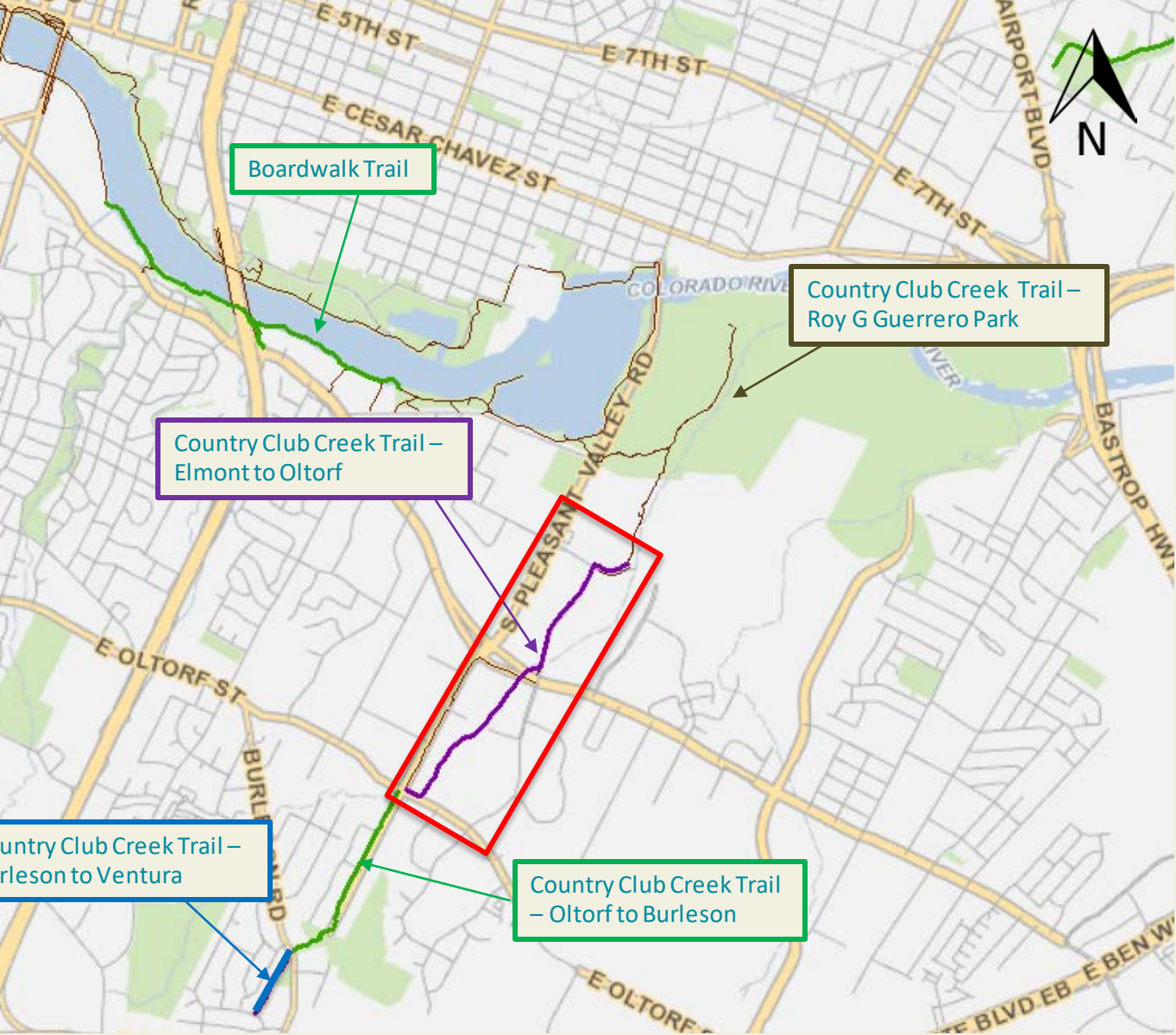
COUNTRY CLUB CREEK TRAIL

Elmont Dr – E Oltorf St



COUNTRY CLUB CREEK TRAIL

Elmont Dr – E Oltorf St



Boardwalk Trail

Country Club Creek Trail – Roy G Guerrero Park

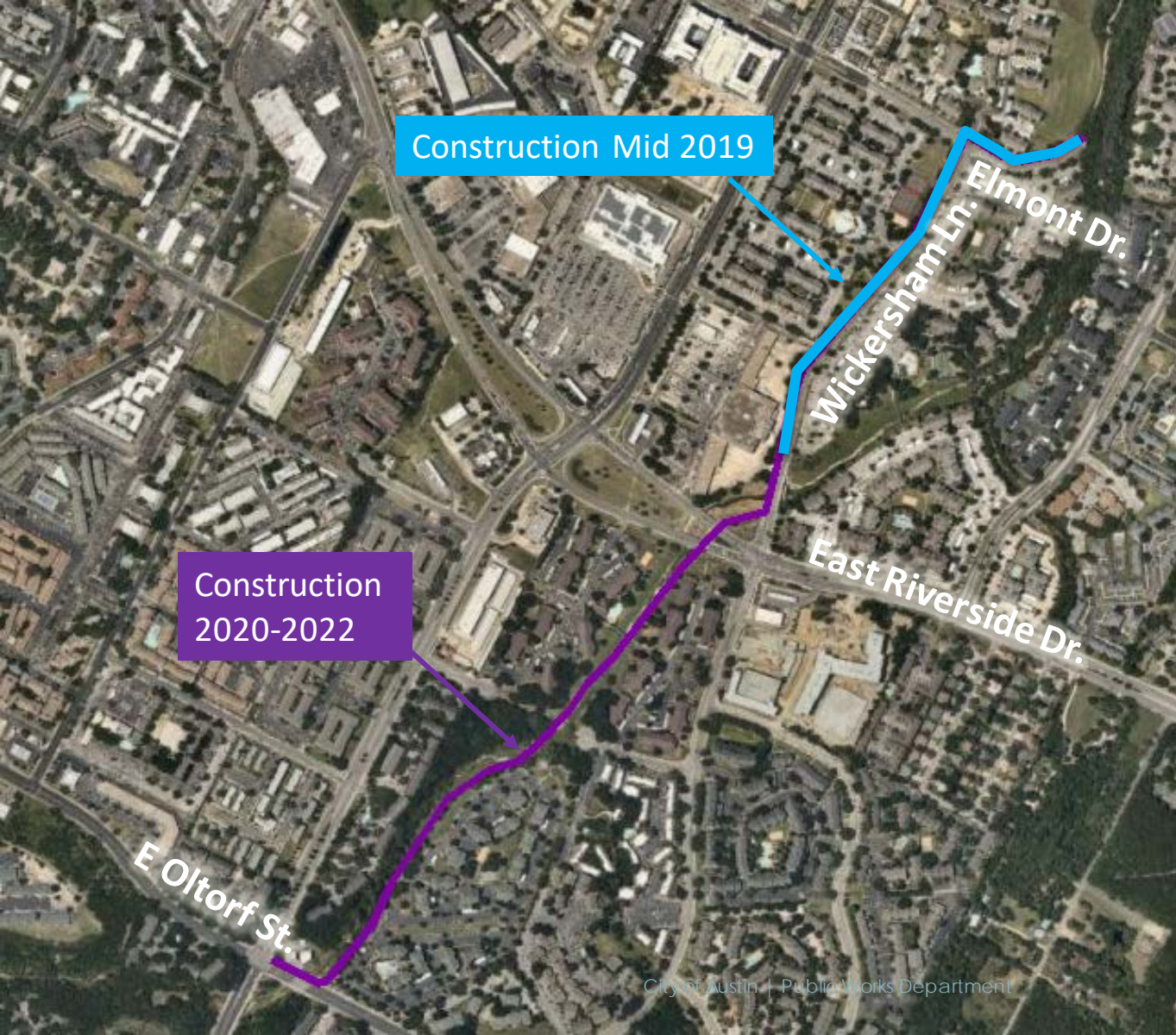
Country Club Creek Trail – Elmont to Oltorf

Country Club Creek Trail – Burleson to Ventura

Country Club Creek Trail – Oltorf to Burleson

COUNTRY CLUB CREEK TRAIL

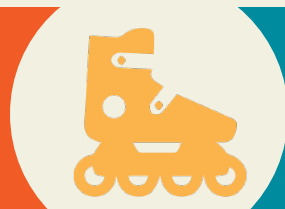
Elmont Dr – E Oltorf St



Construction Mid 2019

Construction
2020-2022

Country Club Creek Trail – Elmont Dr to E Oltorf St



Project Scope

- 12 ft. wide concrete trail
- Approximately 1 mile
- Lighting will be included

Project Funding

- \$6.25M total cost
 - \$6.25M - 2016 Bond – Design & Construction

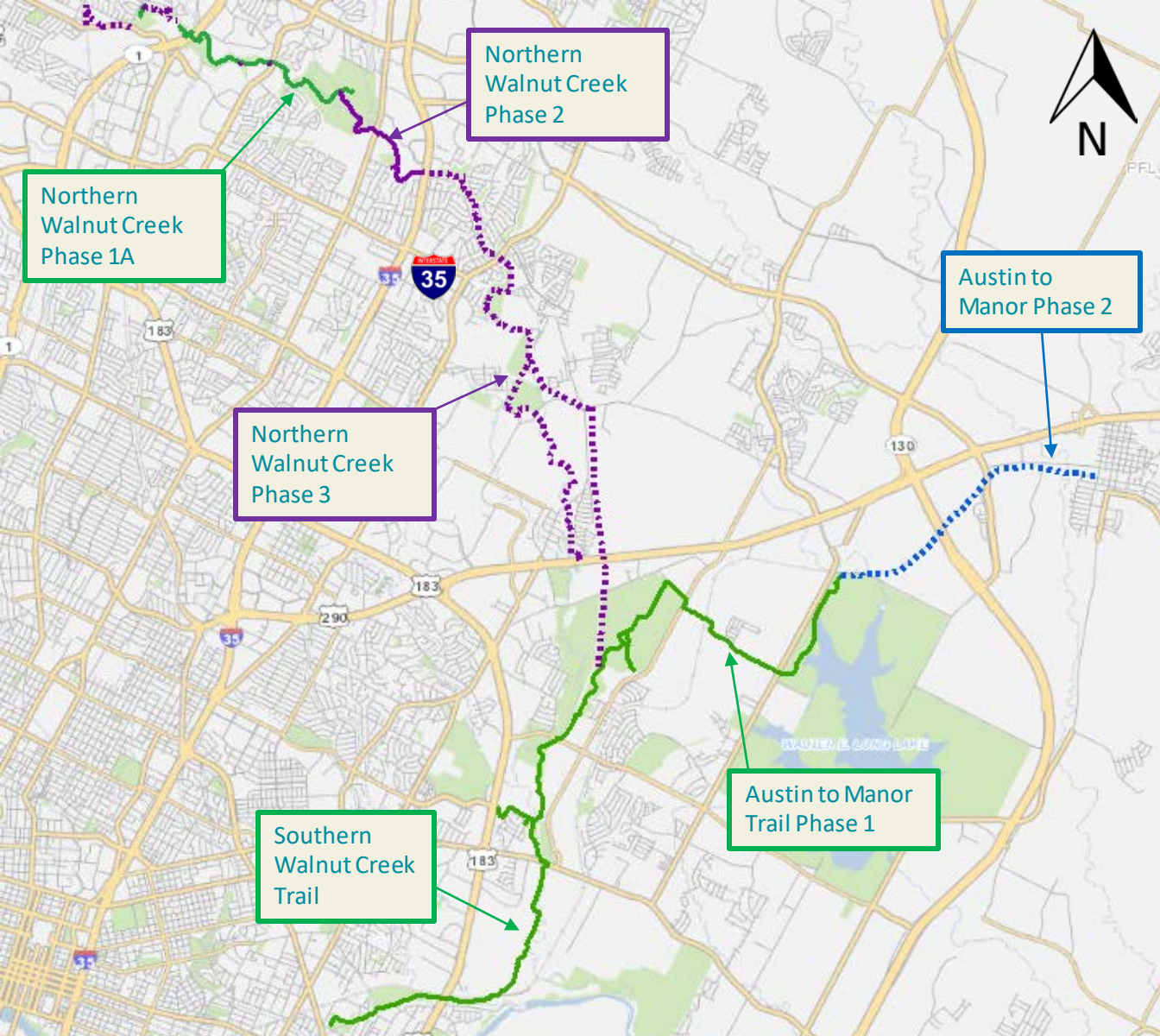
Status – 60% Design (E Riverside to E Oltorf section)

Tentative Construction Timeframe- Fall 2021 – Late 2022



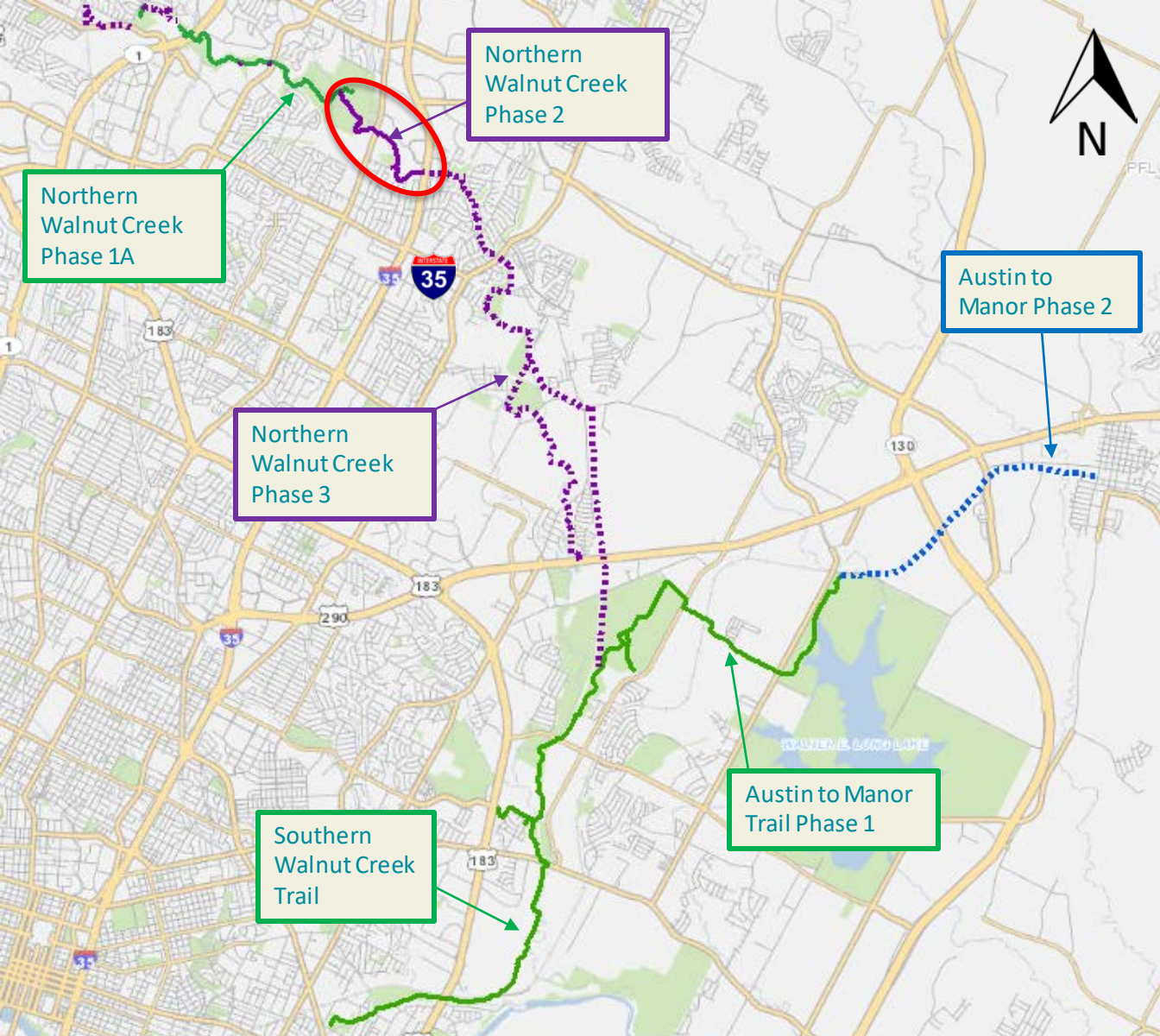
Public Outreach

- 2 Public Meetings held in Preliminary Engineering phase
- Outreach regarding removal of parking on Wickersham Lane
- 1 Public Meeting will be held at 60% Design- April/May
- 1 Pre-Construction Meeting will be held
- Landowner engagement
- Urban Trails website
 - <http://austintexas.gov/CountryClubCreekTrail>
 - Project specific newsletter



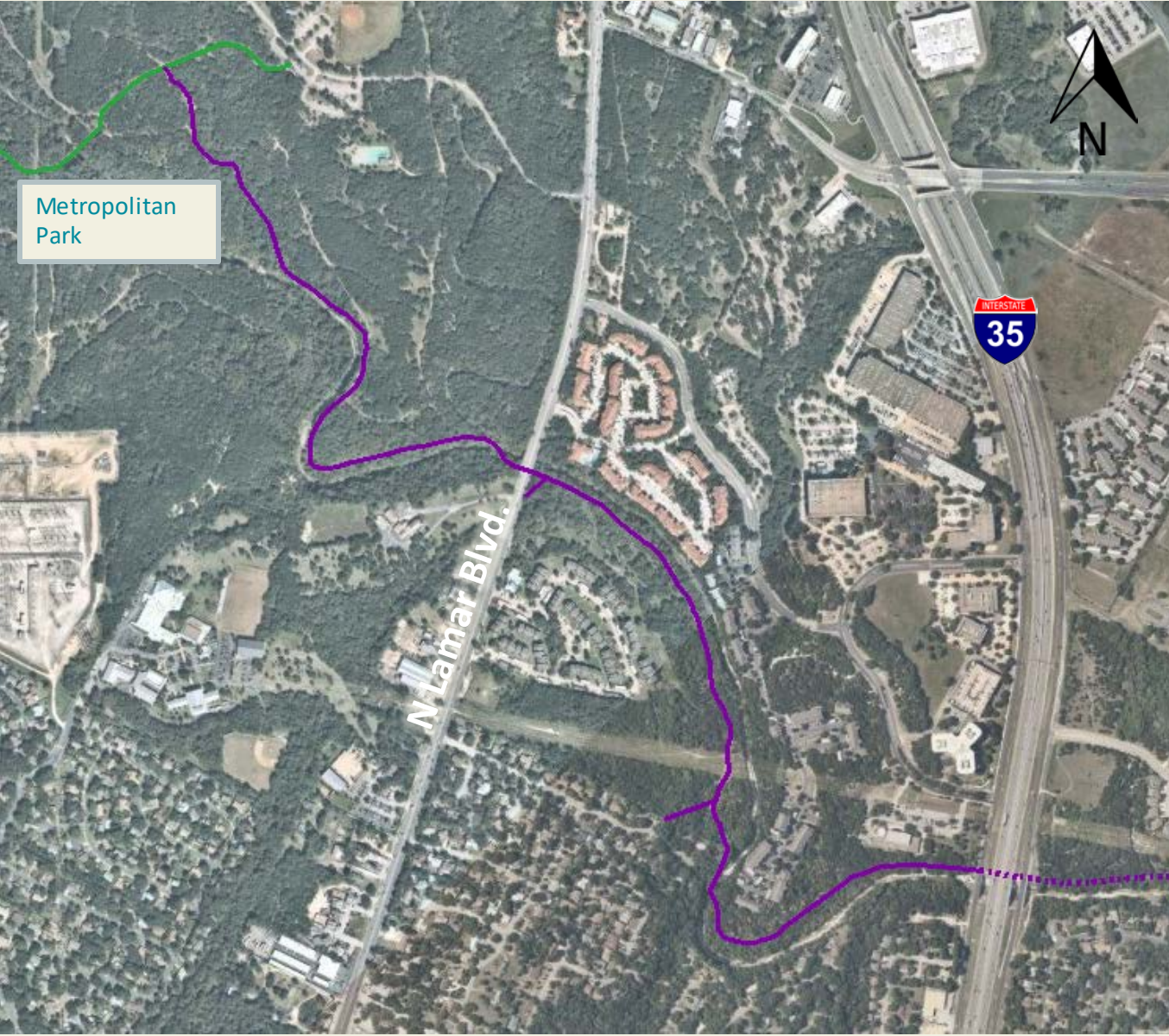
Northern Walnut Creek Trail Ph 2

Walnut Creek
Metropolitan Park –
IH-35



Northern Walnut Creek Trail Ph 2

Walnut Creek
Metropolitan Park –
IH-35



Metropolitan
Park

N Lamar Blvd.

INTERSTATE
35

Northern Walnut Creek Trail Ph 2

Walnut Creek
Metropolitan Park –
IH-35

Northern Walnut Creek Trail Ph 2

–Walnut Creek Park to IH-35



Project Scope

- 12 ft. wide concrete trail
- 1.67 miles

Project Funding–

- \$6.62M total cost
 - \$86,000 PARD 2006 P3 -Design
 - \$930,000 PARD – Park Dedication - Design
 - \$2.5M – 2016 Bond – Design & Construction
 - \$1.5M – TxDOT Grant - Construction

Status – 60% Design

Tentative Construction Timeframe- Mid 2020- Mid 2022

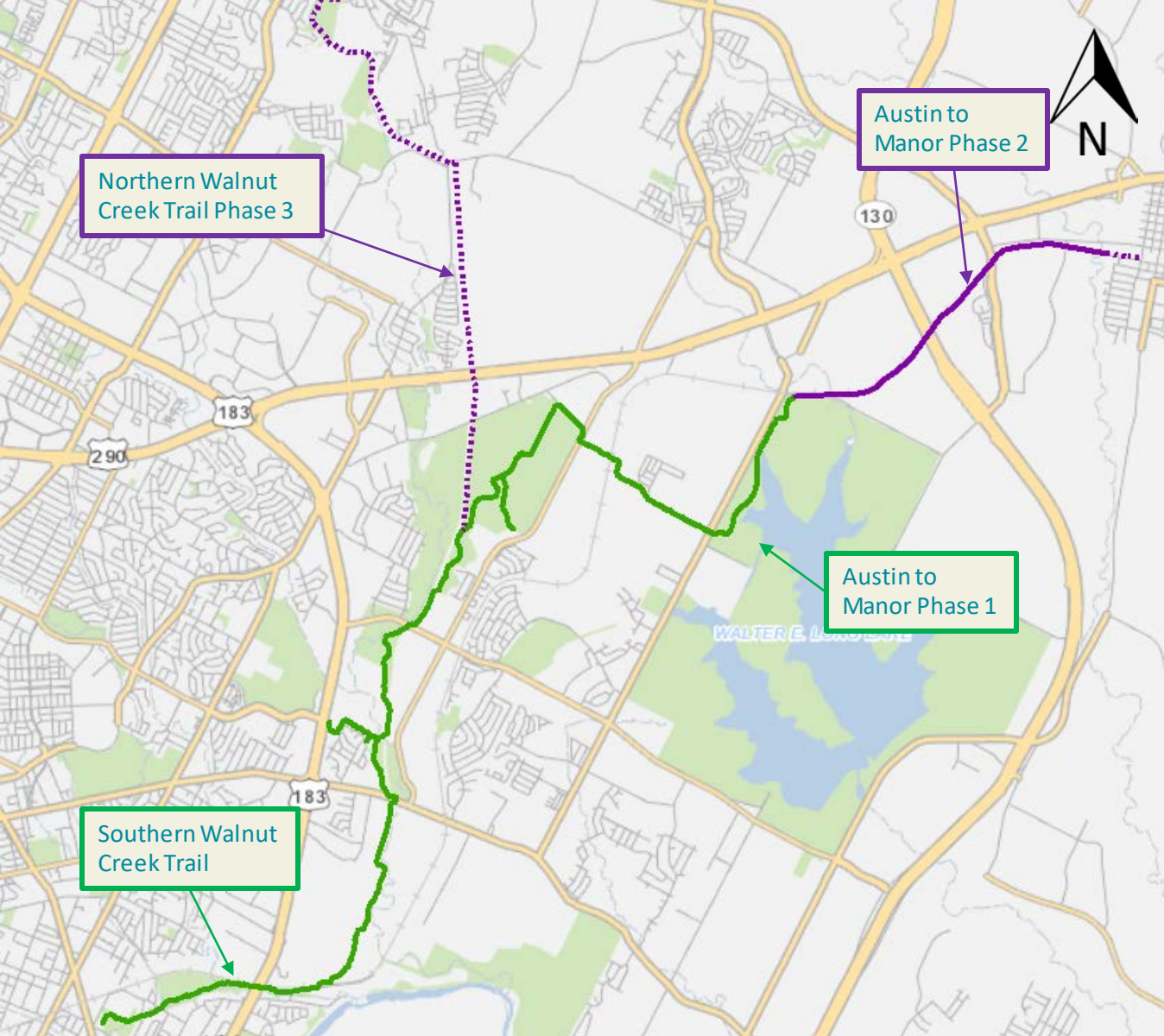
Northern Walnut Creek Trail Ph 2

–Walnut Creek Park to IH-35



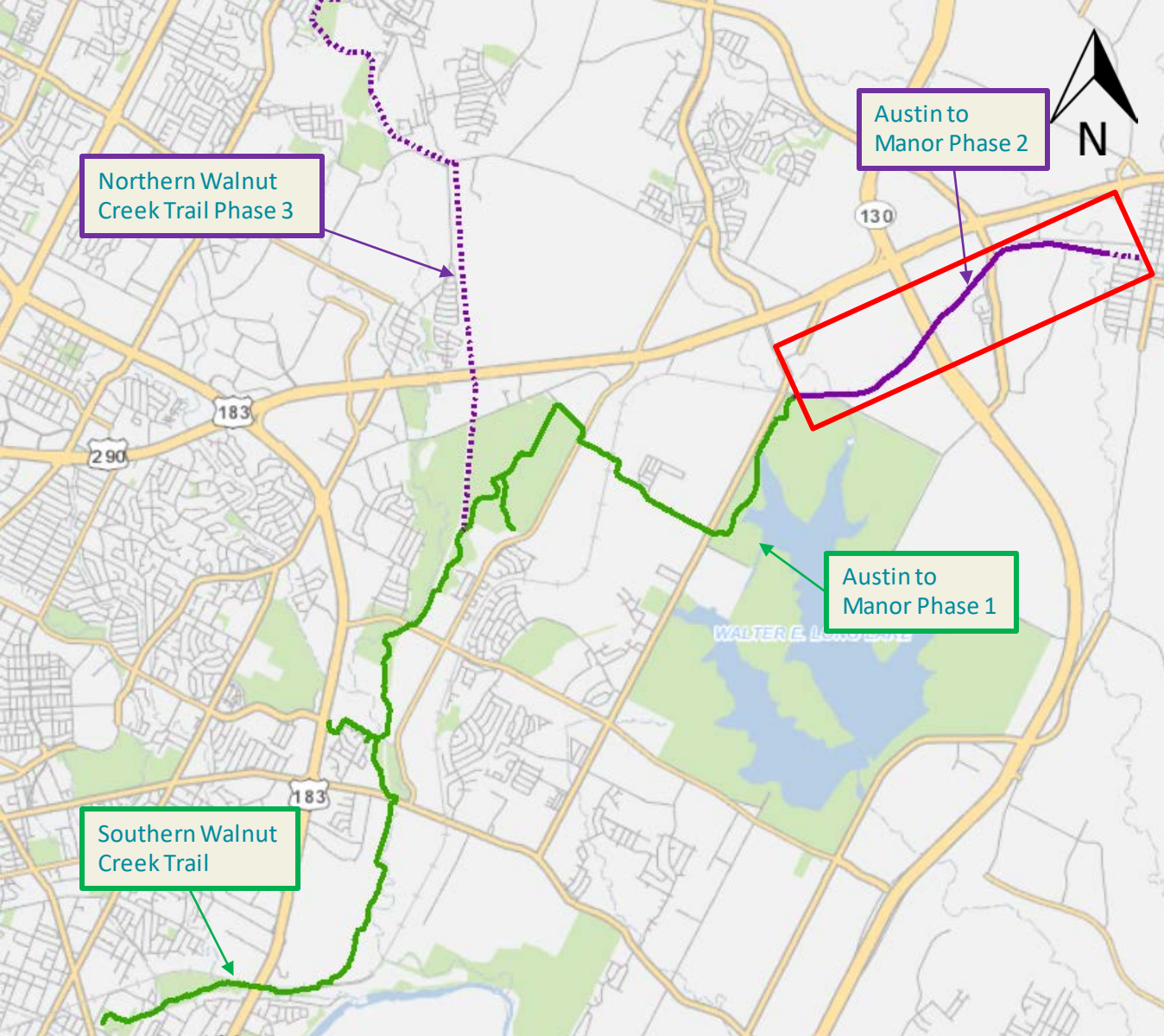
Public Outreach

- Jan. 2014: Information Meeting- Little Walnut Creek Library
- April 2017: Public Meeting – Walnut Creek Elementary
- Late 2019: Public Meeting for 60% design status report
- Outreach through implementation of Southern Walnut Creek, Northern Walnut Creek Ph 1, and Walnut Creek Ph 3 meetings.



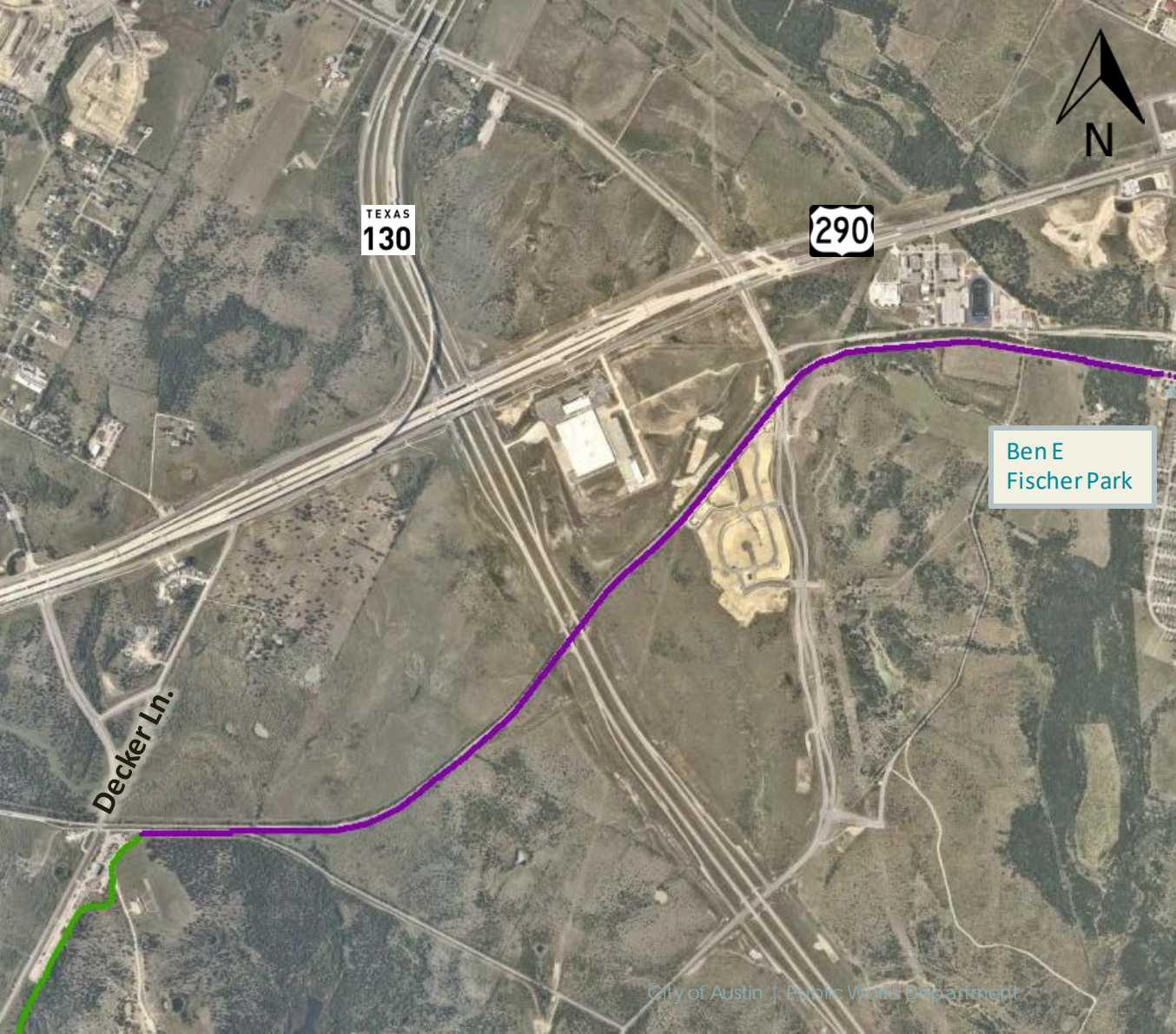
Austin to Manor Ph 2

Decker and Lindell Ln
– Ben E Fischer Park



Austin to Manor Ph 2

Decker and Lindell Ln
– Ben E Fischer Park



Austin to Manor Ph 2

Decker and Lindell Ln
– Ben E Fischer Park

Austin to Manor Ph 2 – Lindell Ln to Manor



Project Scope

- 11-12 ft. concrete trail
- 2.9 miles

Project Funding

- \$7.8M total cost
 - \$370,000 - 2012 Bond - Design
 - \$3.1M - 2016 Bond – Design & Construction
 - \$3.7M- CAMPO - Construction
 - \$1.26M - Travis County - Construction

Status – 60% Design

Tentative Construction Timeframe- Summer 2021 – Late 2022

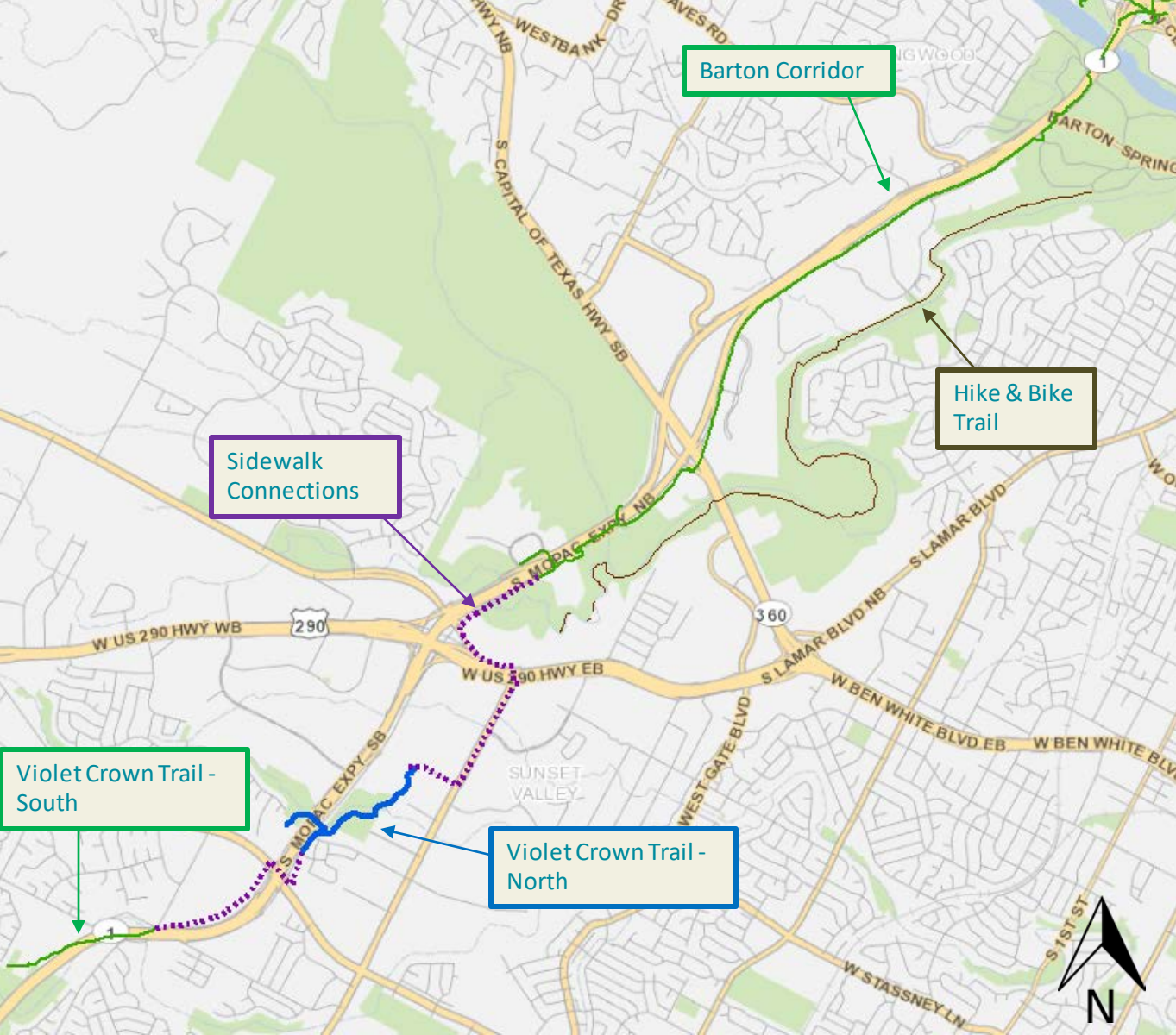


Public Outreach

- Outreach through implementation of Southern Walnut Creek, Northern Walnut Creek Ph 1, Walnut Creek Ph 3, and Austin to Manor Ph 1 meetings
- Letter of support from Superintendent of Manor ISD
- Stakeholder engagement
 - Travis County
 - Dwyer Realty Companies
 - City of Manor
 - CapMetro

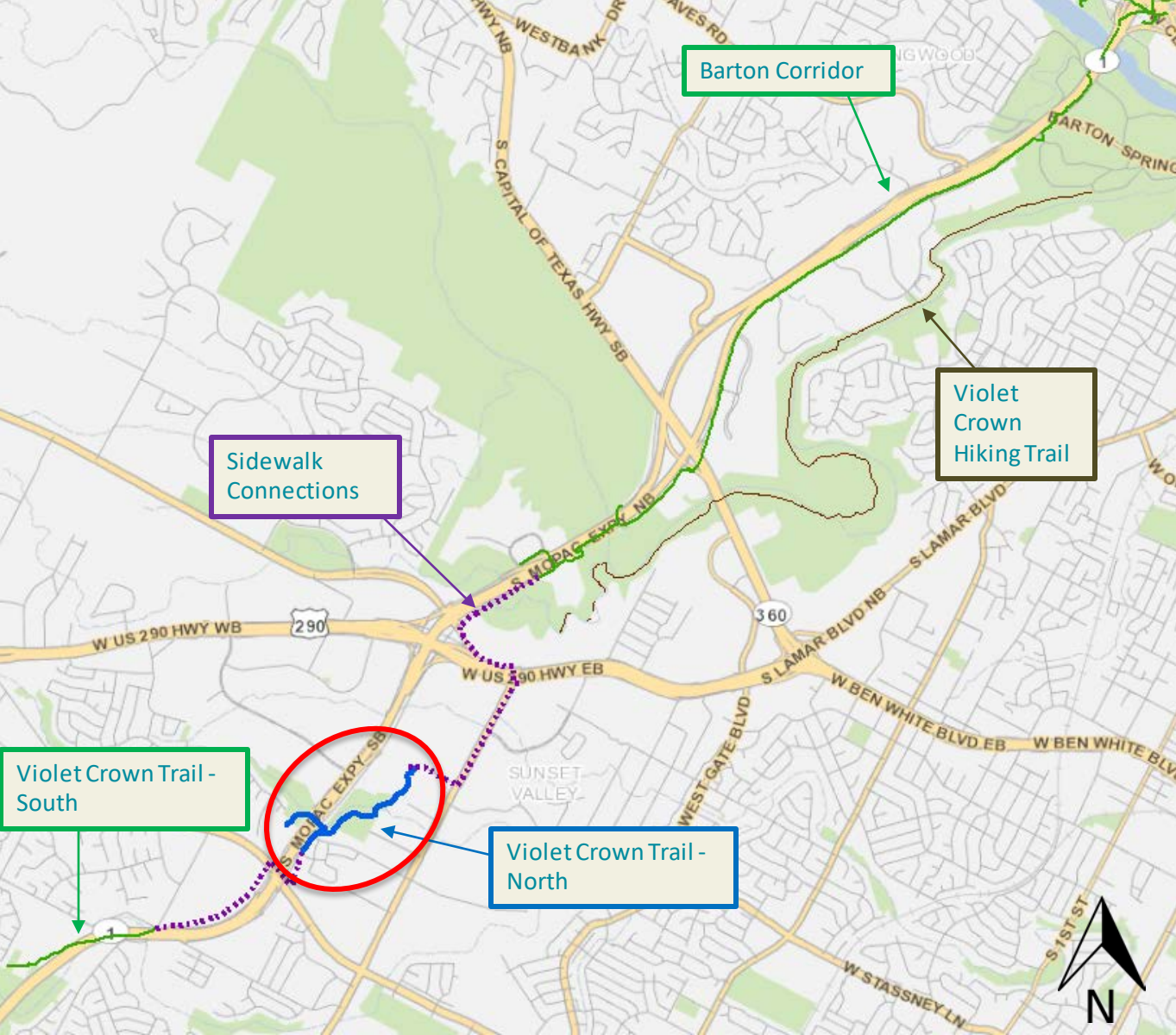
Violet Crown Trail - North

Home Depot Blvd –
MoPac Expressway &
William Cannon Dr




Violet Crown Trail - North

Home Depot Blvd –
MoPac Expressway &
William Cannon Dr





Legend

 Violet Crown Trail – North

Violet Crown Trail - North

Home Depot Blvd –
MoPac Expressway &
William Cannon Dr

Violet Crown Trail North – William Cannon to Home Depot Blvd



Project Scope

- 10-11ft. wide Concrete & Stalok
- 1 mile

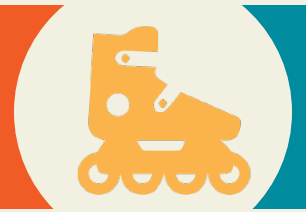
Project Funding

- \$2.7M total cost
 - \$550,000 - 2012 Bond – Design
 - \$1,000,000 - 2016 Bond – Design & Construction
 - \$1,200,000 - CAMPO – Construction

Status – 90% Design

Tentative Construction Timeframe- Early 2020 – Mid 2021

Violet Crown Trail North – William Cannon to Home Depot Blvd



Public Outreach

- July 2014: Public Meeting – Hampton Public Library
 - *Community feedback led to change in trail alignment*
- Jan. 2015: Public Meeting – Hampton Public Library
- Feb. 2015: Neighborhood Walkabout Meeting
- Sept. 2017: VCT South meeting- Hampton Public Library
- Late 2019: Next public meeting
- Close coordination and engagement from Hill Country Conservancy

All Current Projects



Project	Status
Austin to Manor – Phase 2	60% Design
Bergstrom Spur Study	Planning
Country Club Creek Trail – Burleson to Ventura	Substantially Complete
Country Club Creek Trail – Elmont to Oltorf	60% Design
La Loma Trail	100% PER
Northern Walnut Creek Trail – Phase 1A	Substantially Complete
Northern Walnut Creek Trail – Phase 2	60% Design
Northern Walnut Creek Trail – Phase 3	60% PER
Red Line Trail – Braker to Walnut Creek *	90% PER
Southern Walnut Creek Renovation	90% Design
Upper Boggy Creek – Red Line Trail	80% Construction
Violet Crown Trail – North	90% Design
YBC Trail *	10% Design



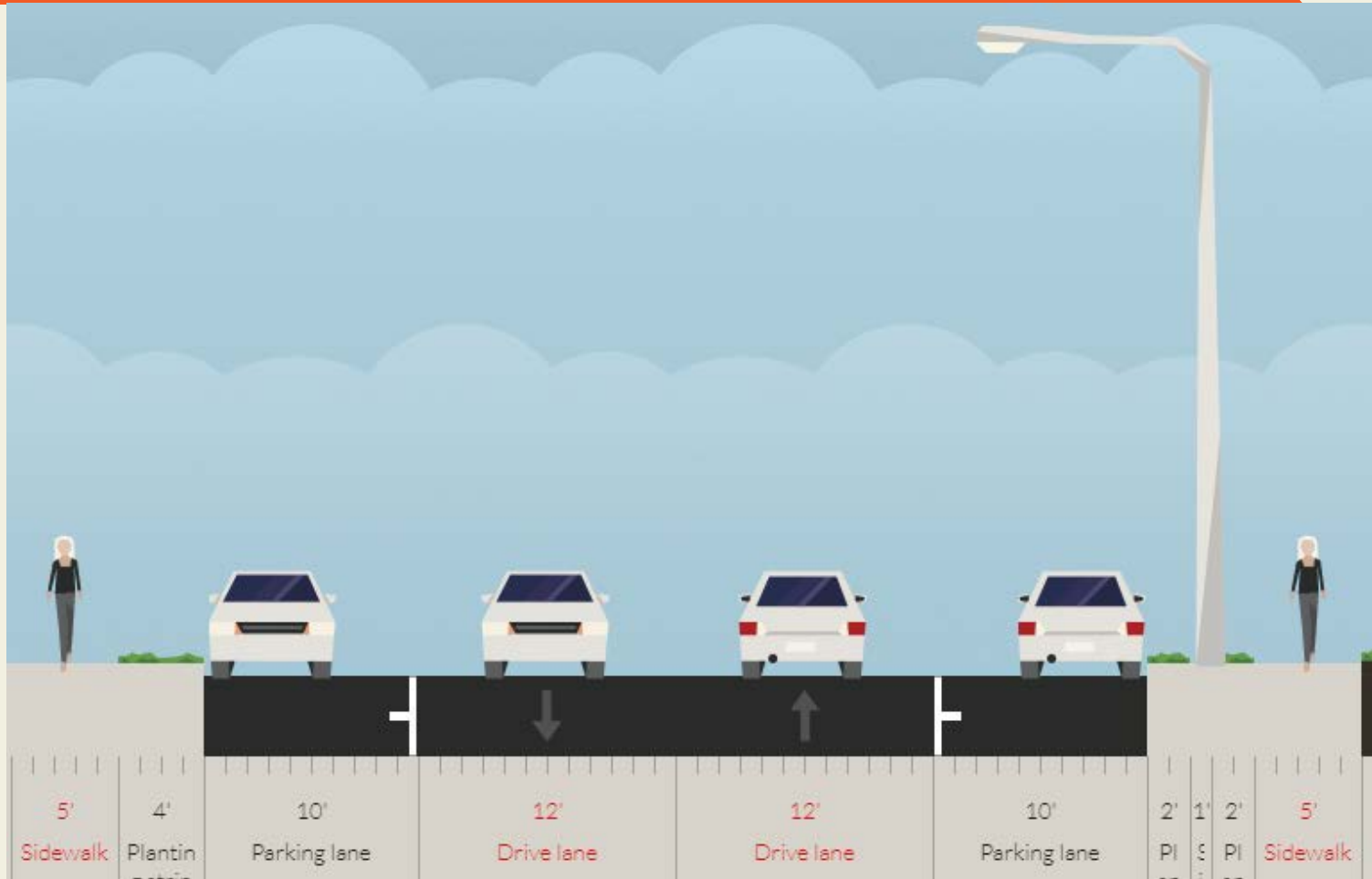
CITY OF AUSTIN
PUBLIC WORKS DEPARTMENT
CONNECTING YOU ALL AROUND AUSTIN

Questions?

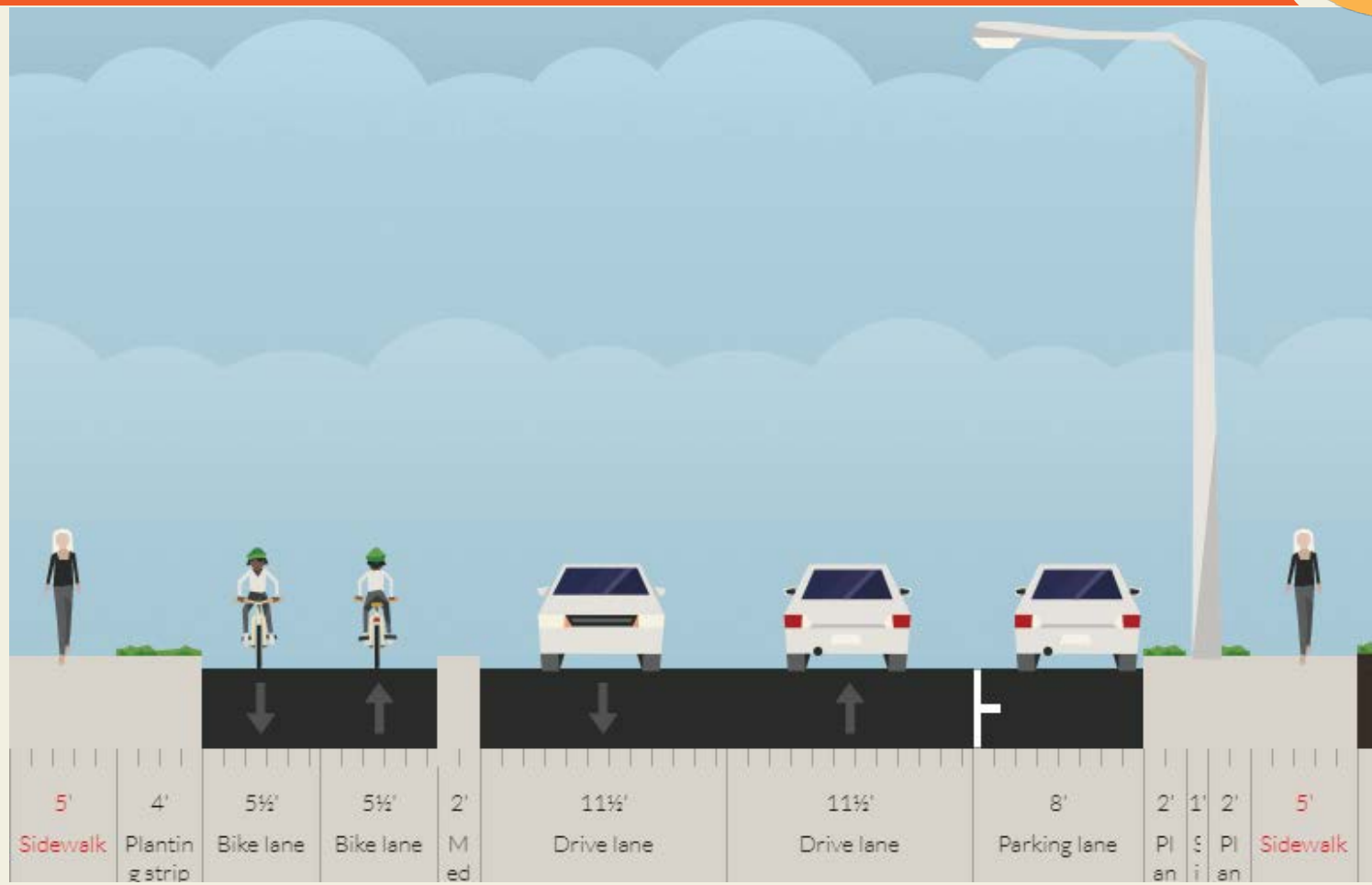
Janae Spence
Community Services Division Manager
Janae.Spence@austintexas.gov
512.974.3159



Wickersham Lane - Existing



Wickersham Lane - Proposed



Wickersham Lane – Existing Bus Stop



Wickersham Lane – Proposed Bus Stop

