



Austin Strategic Mobility Plan Final Draft Briefing

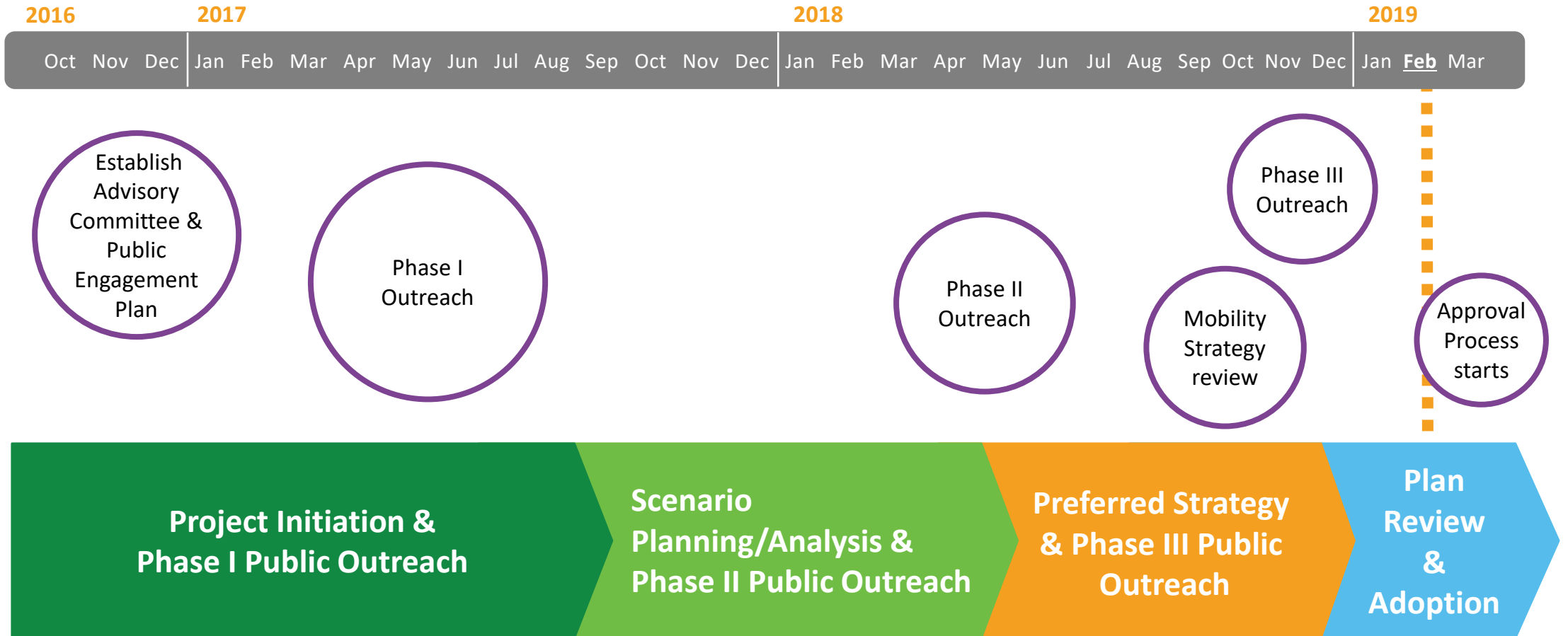
CITY COUNCIL MOBILITY COMMITTEE

FEBRUARY 28, 2019

Agenda

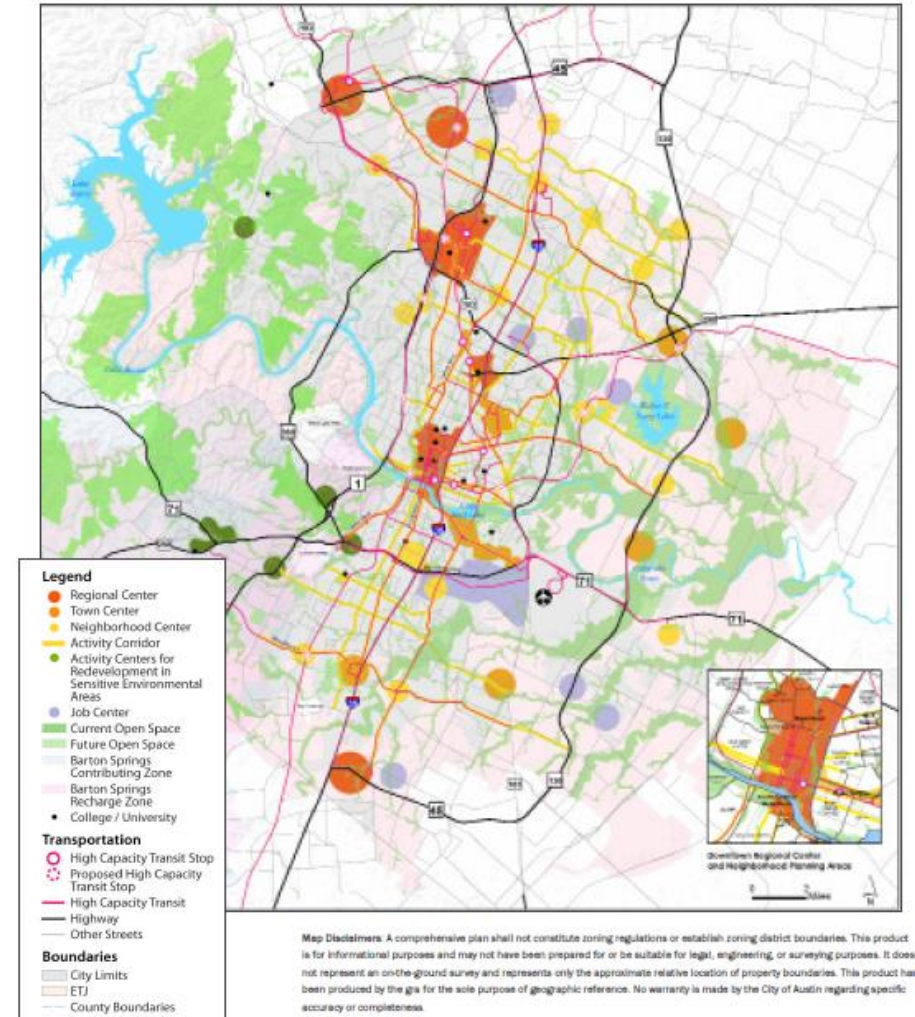
- Schedule
- Approach
- Community Engagement
- ASMP Draft
 - Motivation Behind the Plan
 - Content
 - Definitions
 - System Maps and Priority Networks
 - Network Ingredients
 - Street Network Table
- Top Strategies & SD23 Mobility Outcome
- Next Steps

Schedule



The Vision

- Imagine Austin
 - Transportation Element of Imagine Austin
 - Imagine Austin recommends the creation of the ASMP
- Austin Strategic Mobility Plan
 - Goals, Policies, Objectives, and Action Items



Imagine Austin Figure 4.5 – Growth Concept Map

Planning Approach

Technical:

Scenario Planning



Public Engagement:

Targeted to Historically Underserved/Underrepresented Populations

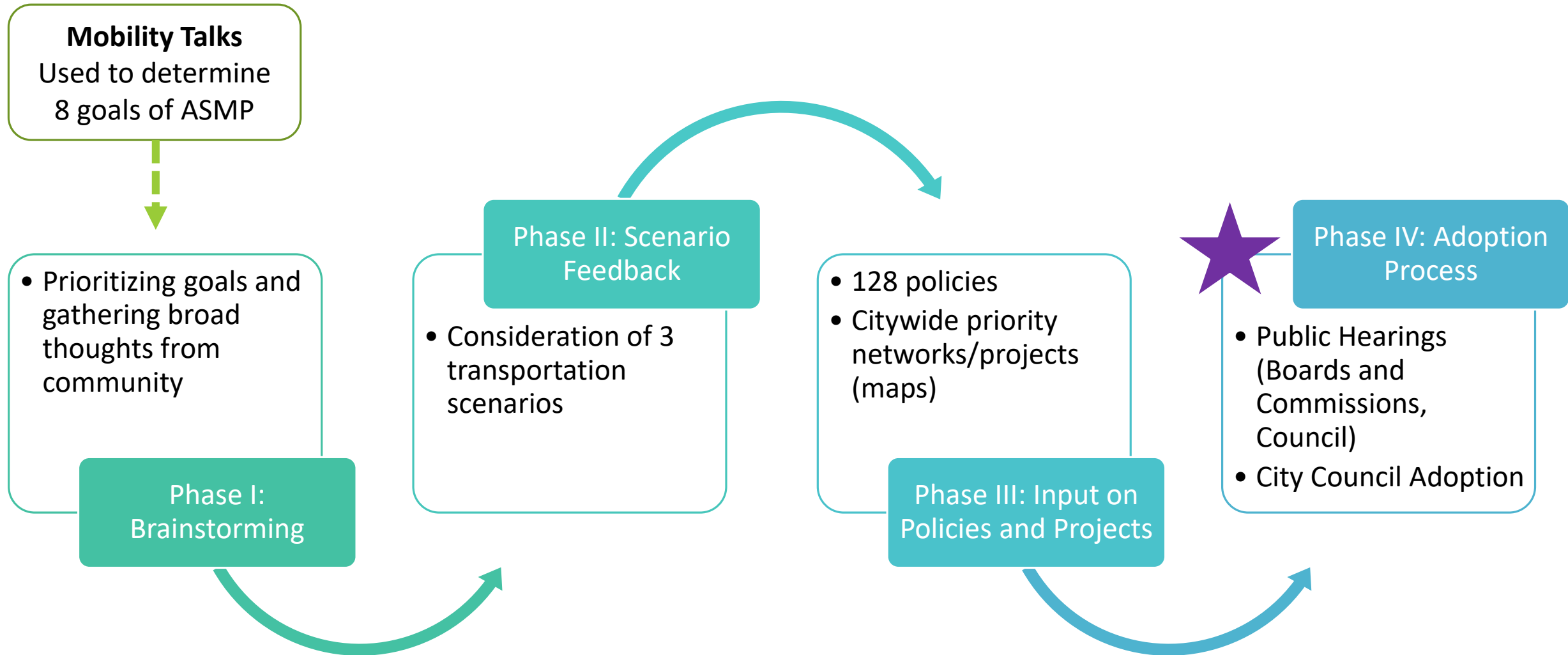
Youth
(24 and younger)

Seniors
(65 and older)

People of
Color

People with
Mobility
Impairments

Community Engagement



Phase I Results

Overall Results



Commuter Delay



Affordability



Health & Safety



Travel Choice



Sustainability



Placemaking



Economic Prosperity



Innovation

Focus Populations



Affordability



Commuter Delay



Travel Choice



Health & Safety



Sustainability



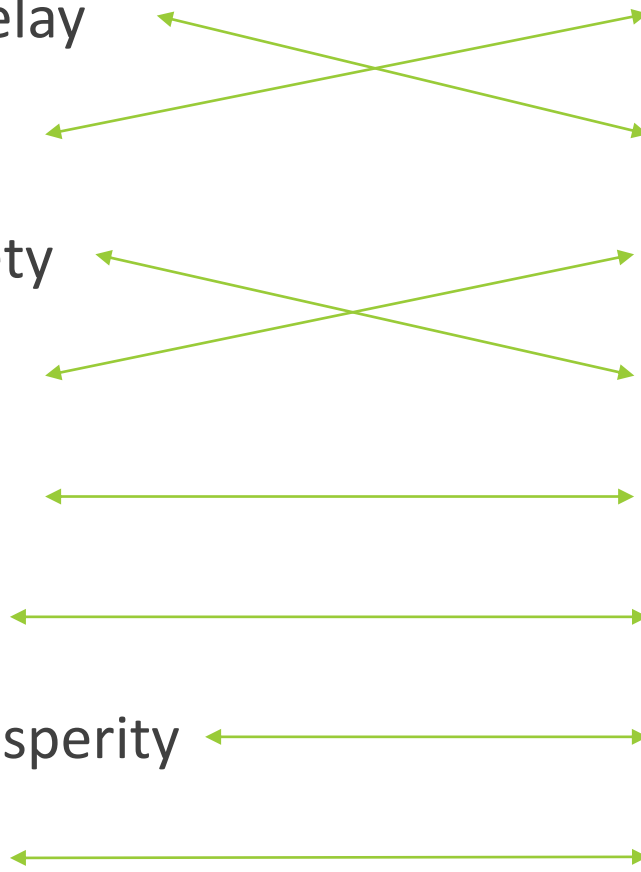
Placemaking



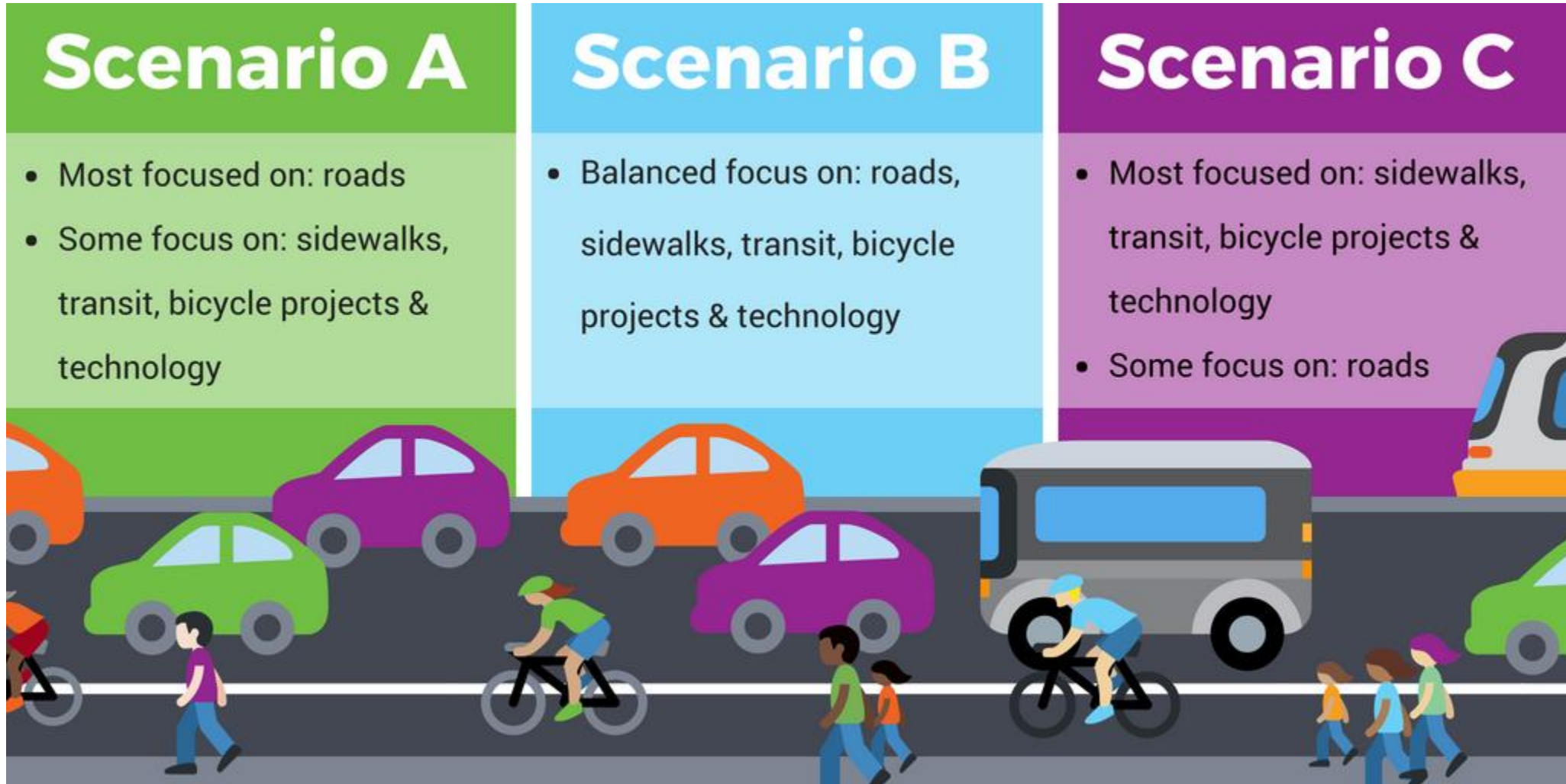
Economic Prosperity



Innovation

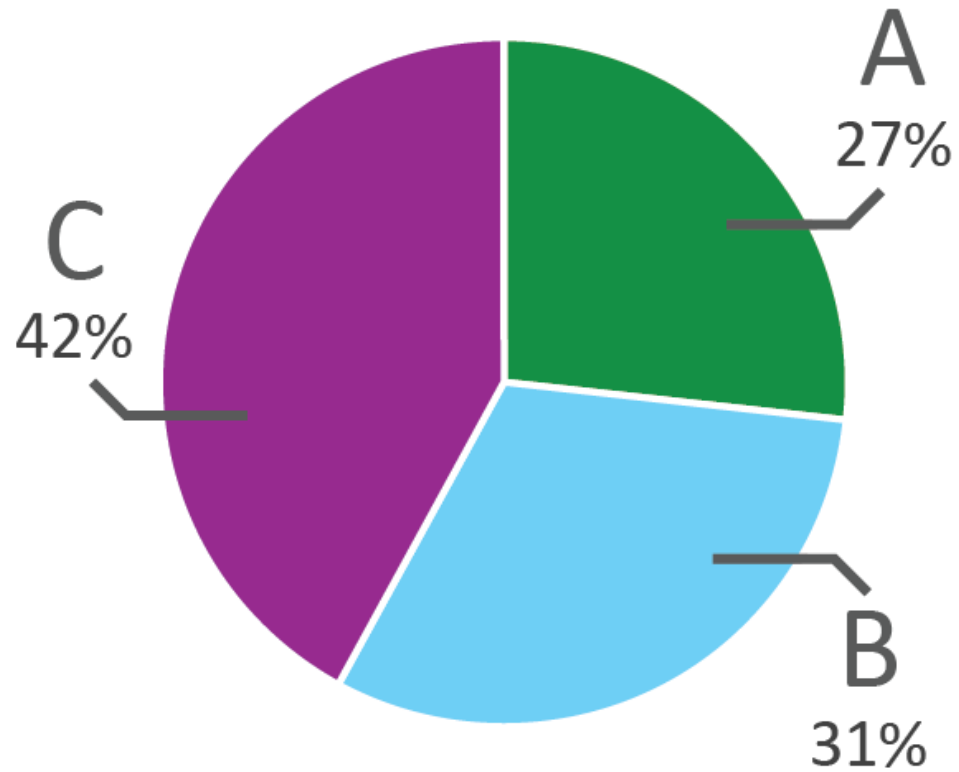


Phase II - Scenarios

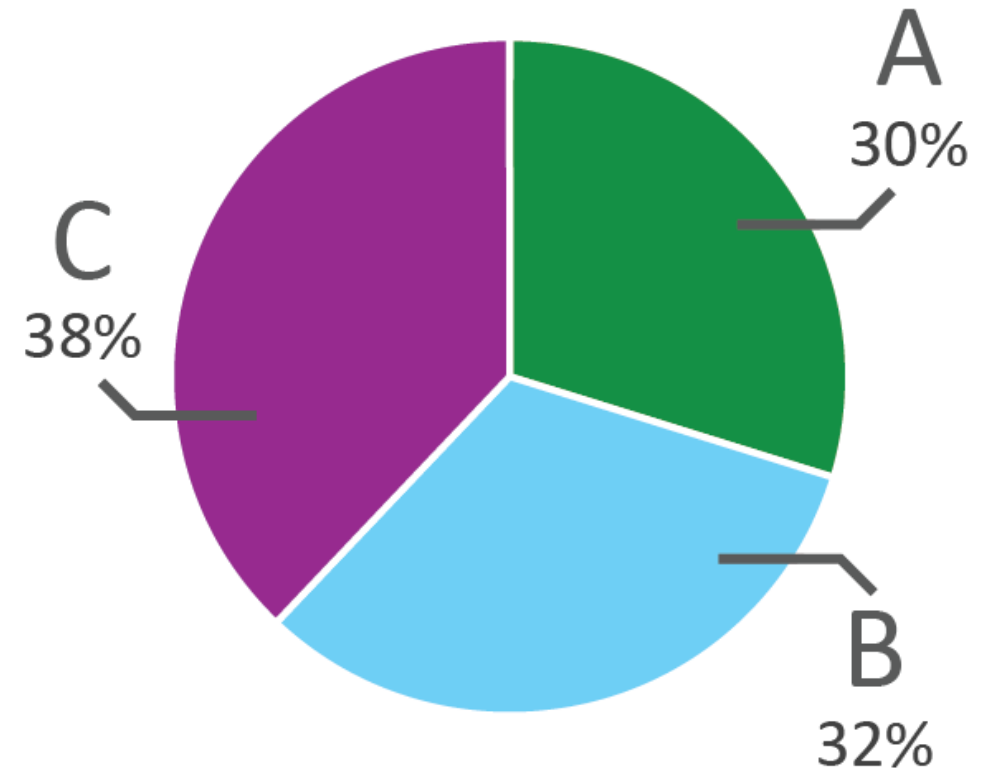


Phase II Results

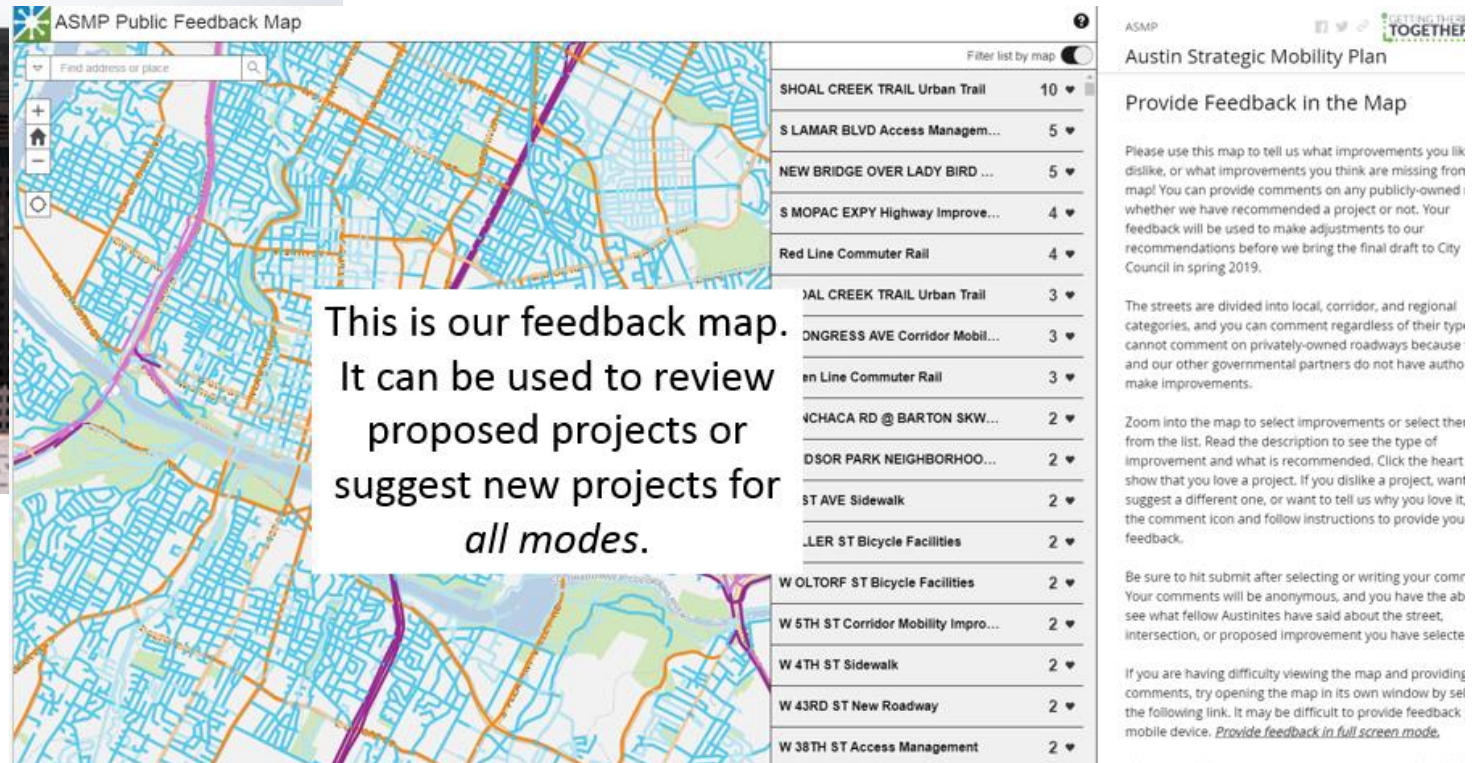
Overall Population



Focus Populations



Phase III: Policies and Projects



Type	Engagement *with Project Connect	Phase 1: Goals	Phase 2: Scenarios	Phase 3: Policies + Projects	Phase 4: Adoption
Targeted Engagement with a focus on historically underrepresented/ underserved communities	Paper survey (in person, delivery, and mail-in)	●	●		
	Organizational outreach	●	●	●	●
	Employer-based events	●	●		
	Employer-based electronic outreach	●	●	●	●
	Paid, targeted social media	●	●	●	●
	Focus groups		●	●	
	Community events and presentations*	●	●	●	●
	Quality of Life Commissions		●	●	
	Office Hours (in libraries)			●	
Traditional public engagement	Multimodal Community Advisory Committee*	●	●	●	●
	“Traffic Jam!” Events*	●	●		
	Online survey	●	●	●	
	Organizational newsletters	●	●	●	●
	Public Hearings				●
	Unpaid, general social media	●	●	●	●
	Materials/ads in libraries and recreation centers	●	●		
	E-Blast (ASMP Newsletter to all contacts)	●	●	●	●

What we heard/key changes in Phase III

Phase III Engagement focused on the draft maps and policies

All comments & staff responses are available online

Plan was adapted based on feedback

**50+ events
attended**

**2,600+ comments
received on the
maps**

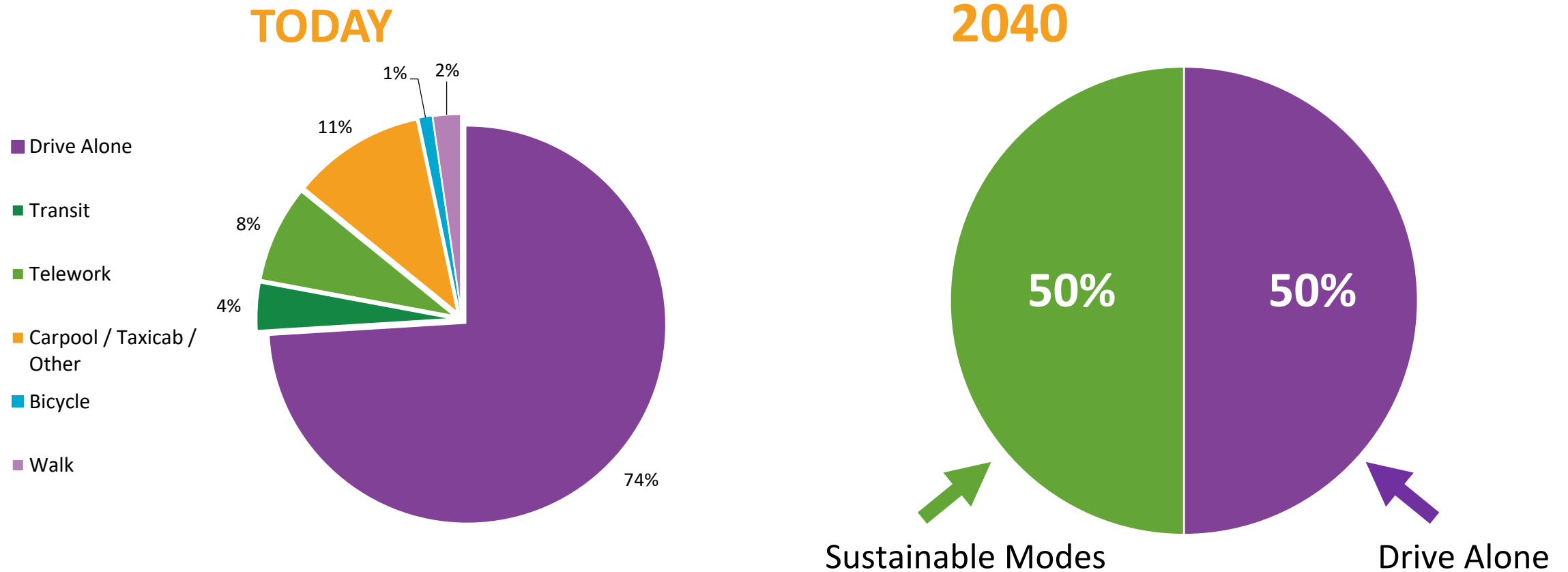
**184 survey
responses on the
policies**

**Hosted focus
groups and 23
office hours
throughout
Austin**

ASMP Final Draft Plan

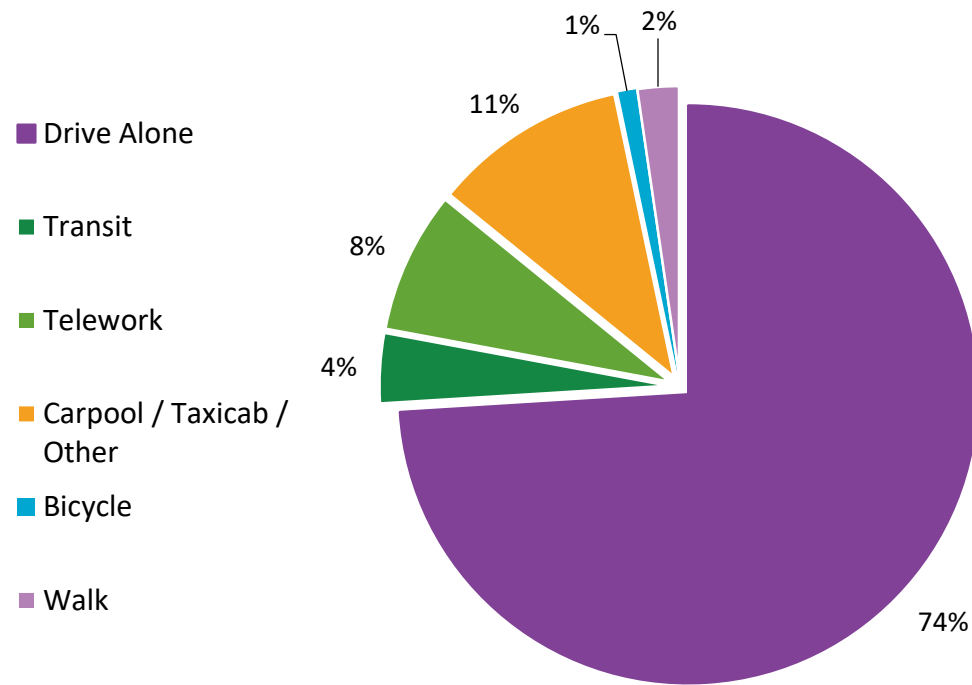
Motivation for the Plan

74% drive alone today vs. 50% in 2039

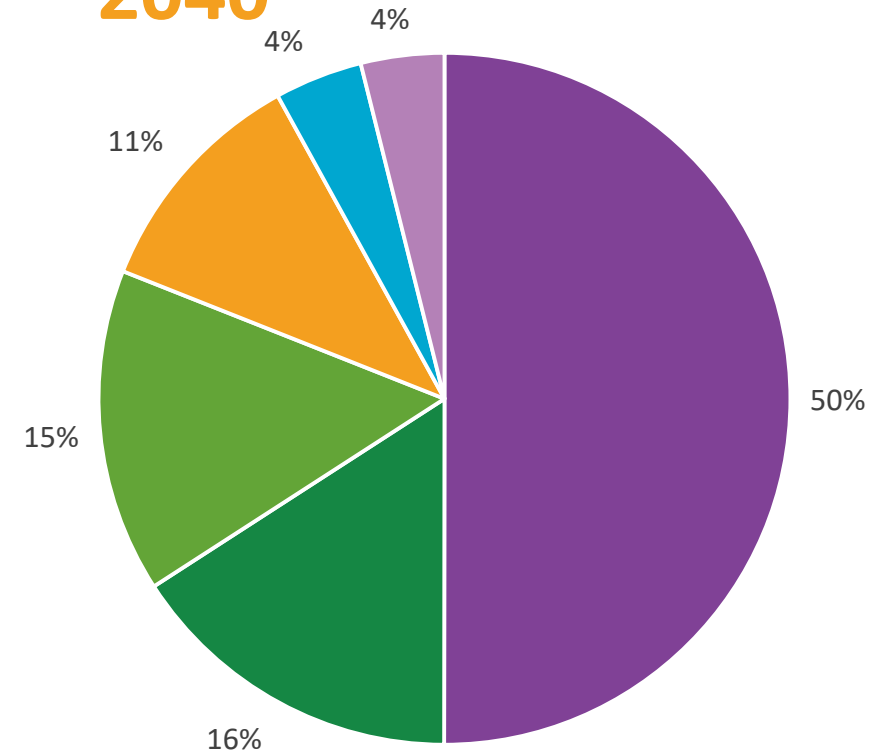


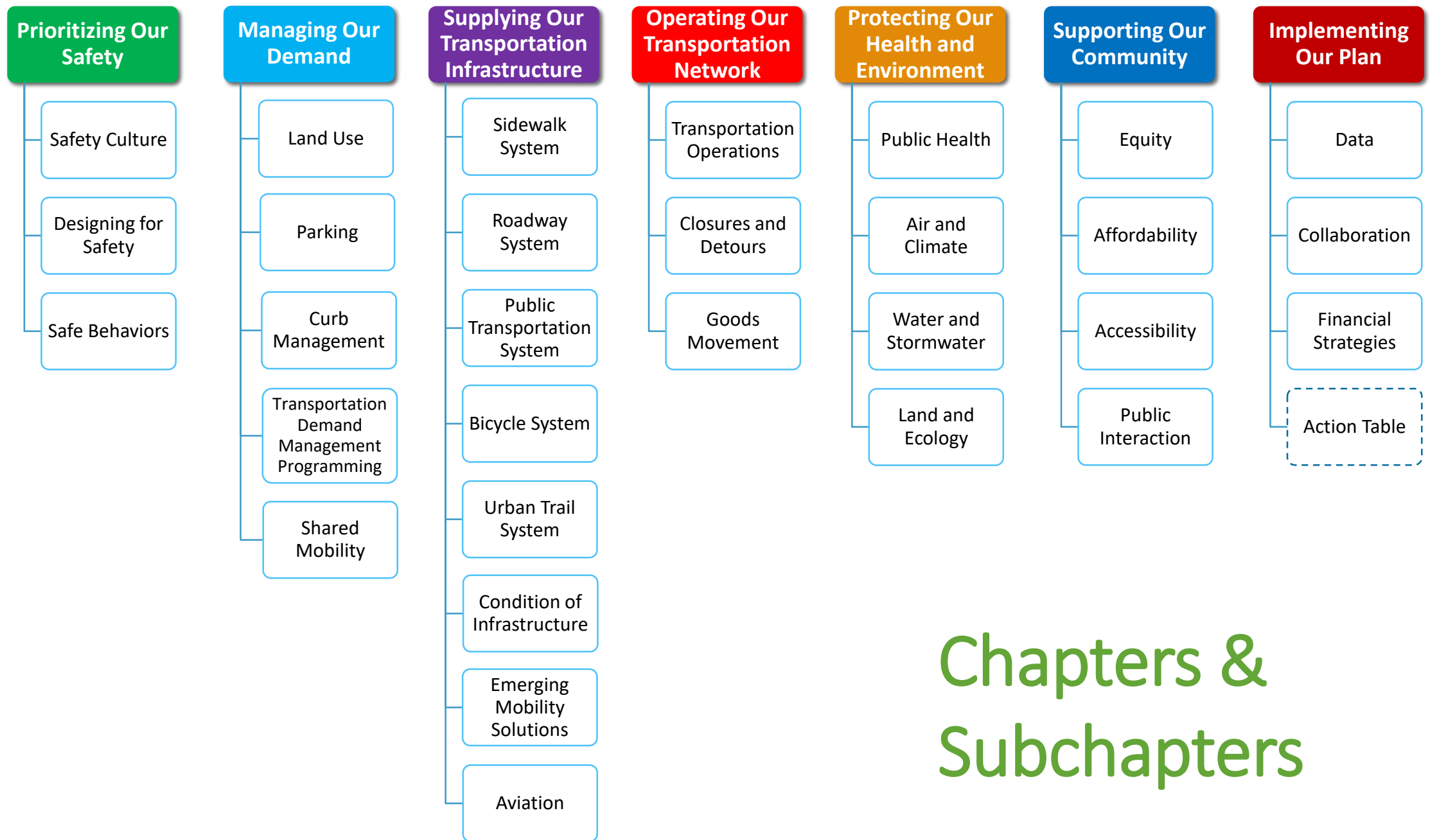
Mode Share Targets

TODAY



2040





Chapters & Subchapters

Definitions

Indicators + Targets: More specific measures of our goals which help us know how well we are achieving them. Some indicators have identified targets necessary to make ambitious yet reasonable progress toward a goal within a specified timeline.

Policies: A definite course or method of action to guide and determine present and future decisions

Actions: Steps necessary to support policies, programs, and projects (one-off items rather than ongoing decision-making guidance)

Definitions

Priority Networks: Designated for the roadway, public transportation, and bicycle systems to show where modes are prioritized to improve operations

Transportation Network Maps: Identify possible projects the City may pursue in the next 20 years based on a variety of factors, including the evolving needs of the transportation network, engineering analysis, public input, and available funding

Street Network Table: Inventory of our streets and their future conditions, which will be used to identify right of way dedication requirements

How do we get to 50/50?

126 Policies



**100s of multimodal
projects to achieve
ASMP goals**



Council's SD23 will help identify 3 to 5 year priorities and action items

Top Strategies

- **Reduce traffic fatalities, serious injuries** by focusing on safety culture, behaviors
- **Move more people** by investing in public transportation
- **Manage congestion** by managing demand
- **Build active transportation access for all ages and abilities** on sidewalk, bicycle, and urban trail systems
- **Strategically add roadway capacity** to improve travel efficiency

Top Strategies

- **Connect people to services and opportunities** for better health
- **Address affordability** by linking housing and transportation investments
- **Right-size and manage parking supply** to manage demand
- **Develop shared mobility options** with data and emerging technology
- **Build and expand community relationships** with plan implementation

System Maps and Priority Networks

- Sidewalk
- Bicycle
- Urban Trail
- Roadway
- Public Transportation
- High Injury Network

New Material

Transportation Network Ingredients

Scenario A Roadway Ingredients

- 300+ miles of roadway projects



Scenario C Multimodal Ingredients

- New transit routes in both partially and fully-dedicated space for the full system
- 400+ miles of bicycle facilities
- 2,000+ miles of sidewalks
- 250+ miles of urban trails
- Significant increases in TDM programing and Transportation Technology investments

Final Draft ASMP Ingredients

- **Roadways**
 - 300+ miles of roadway projects
 - Travel time reliability improvements on the Vehicle Priority Network
- **Sidewalks**
 - 2,000+ miles of absent sidewalks
 - 2,600+ miles of existing sidewalks to maintain and keep clear of obstructions
- **Public Transportation**
 - Dedicated transit pathways on the Project Connect Orange and Blue Lines
 - Transit priority treatments on BRT Light corridors and on the Transit Priority Network
- **Bicycles**
 - All ages and abilities facilities on the Bicycle Priority Network and throughout the bicycle system
- **Urban Trails**
 - Completion of all Tier I trails, advance Tier II trails
 - Make connections to the existing system
- Promote and integrate **shared and emerging mobility solutions**
- **Improve efficiency** on the transportation network through:
 - Improved transportation operations
 - Coordinated street closures and detours
- **Manage demand** off the transportation network through:
 - TDM programming encouraging fewer drive-alone trips
 - Development mitigation prioritizing multimodal solutions
 - Land use policies supporting the Imagine Austin Growth Concept

Street Network Table Examples (roadway)

Name	Segment Limits	Type	Street Level	Priority Network	Improvement	Existing		Future		Roadway Description	Existing Bicycle Facility	Future Bicycle Facility	Bicycle Description	Pedestrian Description	Project Description
						Cross Section	Number of Lanes	Cross Section	Number of Lanes						
CAMERON RD	US 290 HWY SVRD TO GLENWOOD DR	Corridor Mobility	3	Vehicle and Transit Priority	Expand Roadway	2U	2	4D	4	4 travel lanes with a raised median	Bike Lane	Protected Bike Lane	all ages and abilities bicycle facilities		The improvements include constructing additional travel lanes, raised medians, and all ages and abilities bicycle facilities.

Mean ROW	Median ROW	Minimum ROW	Maximum ROW	Required ROW	ROW Remarks
92	82	81	131	94	Further study required for prioritizing design elements or ROW acquisition.



Name	Segment Limits	Type	Street Level	Priority Network	Improvement	Existing		Future		Roadway Description	Existing Bicycle Facility	Future Bicycle Facility	Bicycle Description	Pedestrian Description	Project Description
						Cross Section	Number of Lanes	Cross Section	Number of Lanes						
CLAWSON RD	LIGHTSEY RD TO VALLEYRIDGE DR	Local Mobility	2		Substandard Street	2U-N	2	2U	2	2 travel lanes	Wide Curb Lane	Bike Lane	all ages and abilities bicycle facilities	complete missing sidewalks	The improvements include reconstructing rural and substandard streets to urban standards with curb and gutter, all ages and abilities bicycle facilities, and sidewalks.

Mean ROW	Median ROW	Minimum ROW	Maximum ROW	Required ROW	ROW Remarks
49	48	43	58	64	Further study required for prioritizing design elements or ROW acquisition.



How the elements work together – Roadway Example

Policy: Strategically provide new roadway connections and add capacity for vehicles.

Example Programs: Development review, regional partnership funding

Example Project: RM 620 at RM 2222

Adding a through-travel lane eastbound, as well as turn lanes and raised medians from Bonaventure Drive to Sitio Del Rio Boulevard and westbound from Ribelin Ranch Drive to Sitio Del Rio Boulevard, and adding an outside northbound merge lane along RM 620 from Steiner Ranch Blvd to the new bypass road, along with center turn lanes and medians.

Indicator: Increase the number of roadway capacity improvements implemented

Action Item Example(s):

- Develop projects that increase vehicle capacity on our roadway system at strategic locations to manage congestion, facilitate emergency response, and provide connectivity.
- Collaborate with TxDOT, CTRMA, Capital Metro, and other agencies on highway improvement projects.

How the elements work together – Transit Example

Policy: Enhance commuter public transportation service

Program: Transit Enhancement Program (Capital Metro and ATD)

Project: W. 5th Street Transit/Bike Priority Lane

Improvements include a shared transit and bicycle priority lane between West Lynn and Baylor streets, with priority bus and bicycle signals at Baylor Street.

Indicator: Decrease transit travel time

Example Action Item(s):

- Implement near-term transit priority improvements in conjunction with regional public and private providers.
- Work with Capital Metro, CARTS, and TxDOT to expand and improve commuter public transportation service.

Path to Completion

- Boards & Commissions:
 - Zoning and Platting Commission (March 5 & March 19)
 - Environmental Commission (March 6)
 - Planning Commission (March 12 & March 26)
 - Urban Transportation Commission (March 18)
- City Council
 - March 7 – Set Public Hearing for March 28
 - March 28 – City Council Public Hearing, Ordinance Readings

Thank you

[AUSTINTEXAS.GOV/ASMP](https://austintexas.gov/asmp)