

# Backup Information Packet

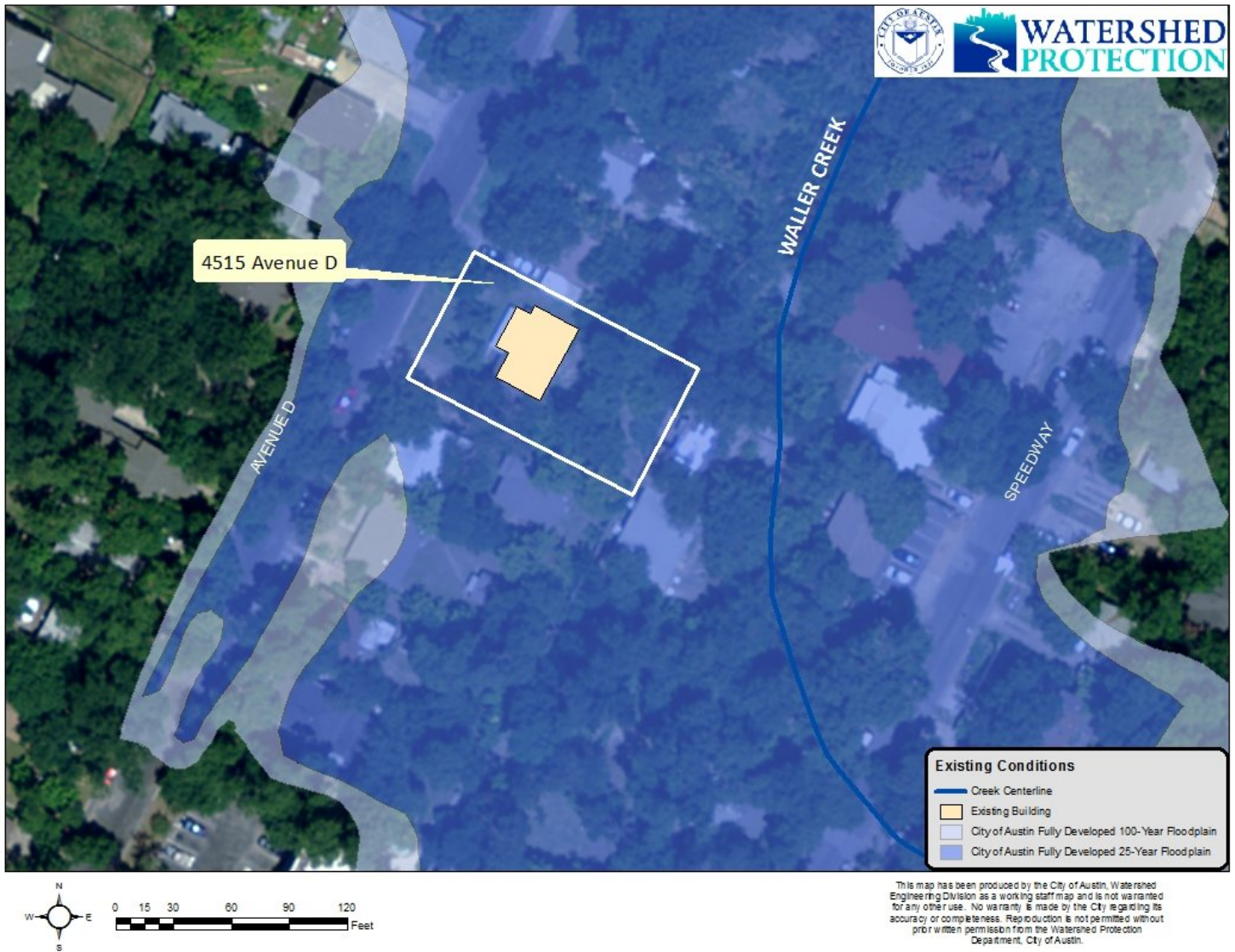
Concerning a public hearing to consider an ordinance authorizing a floodplain variance to construct a 3,253 square foot single family residence, which is entirely in the 25-year and 100-year floodplains of Waller Creek.

## Site Location Map with Existing Building for 4515 Avenue D



This map has been produced by the City of Austin, Watershed Engineering Division as a working staff map and is not warranted for any other use. No warranty is made by the City regarding its accuracy or completeness. Reproduction is not permitted without prior written permission from the Watershed Protection Department, City of Austin.

## Zoomed in Site Location Map at 4515 Avenue D





## Zoomed in Site Location Map of Proposed Improvements

