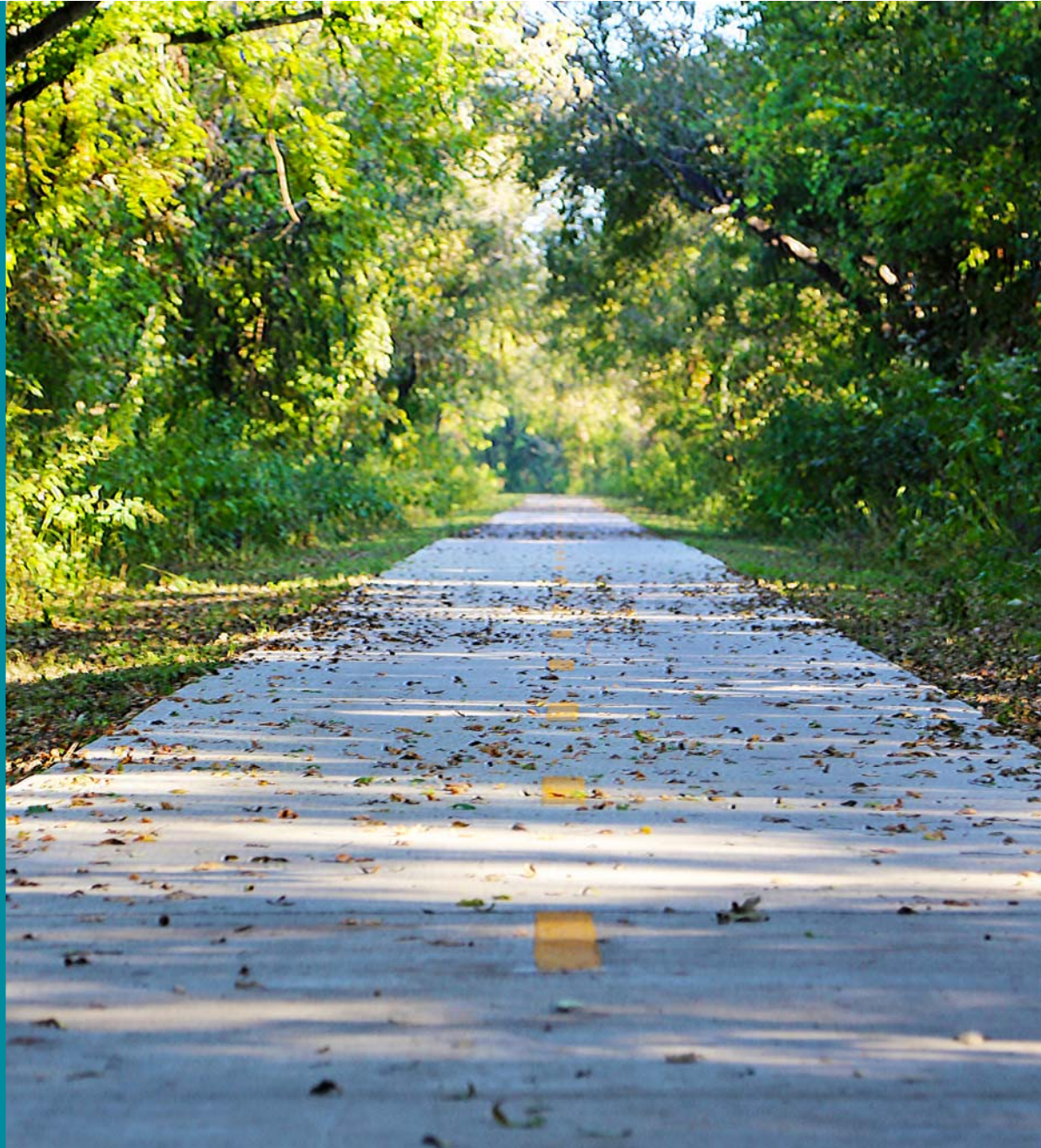


CITY OF AUSTIN
PUBLIC WORKS DEPARTMENT

Urban Trail Projects Updates

CONNECTING YOU
ALL AROUND AUSTIN



Agenda

- **Urban Trails Program Overview**
- **Urban Trails Master Plan requirements**
- **Project Updates**
 - **Austin to Manor Trail Ph 2**
 - **Country Club Creek Trail**
 - **Northern Walnut Creek Trail Ph 2**
 - **Violet Crown Trail – North**

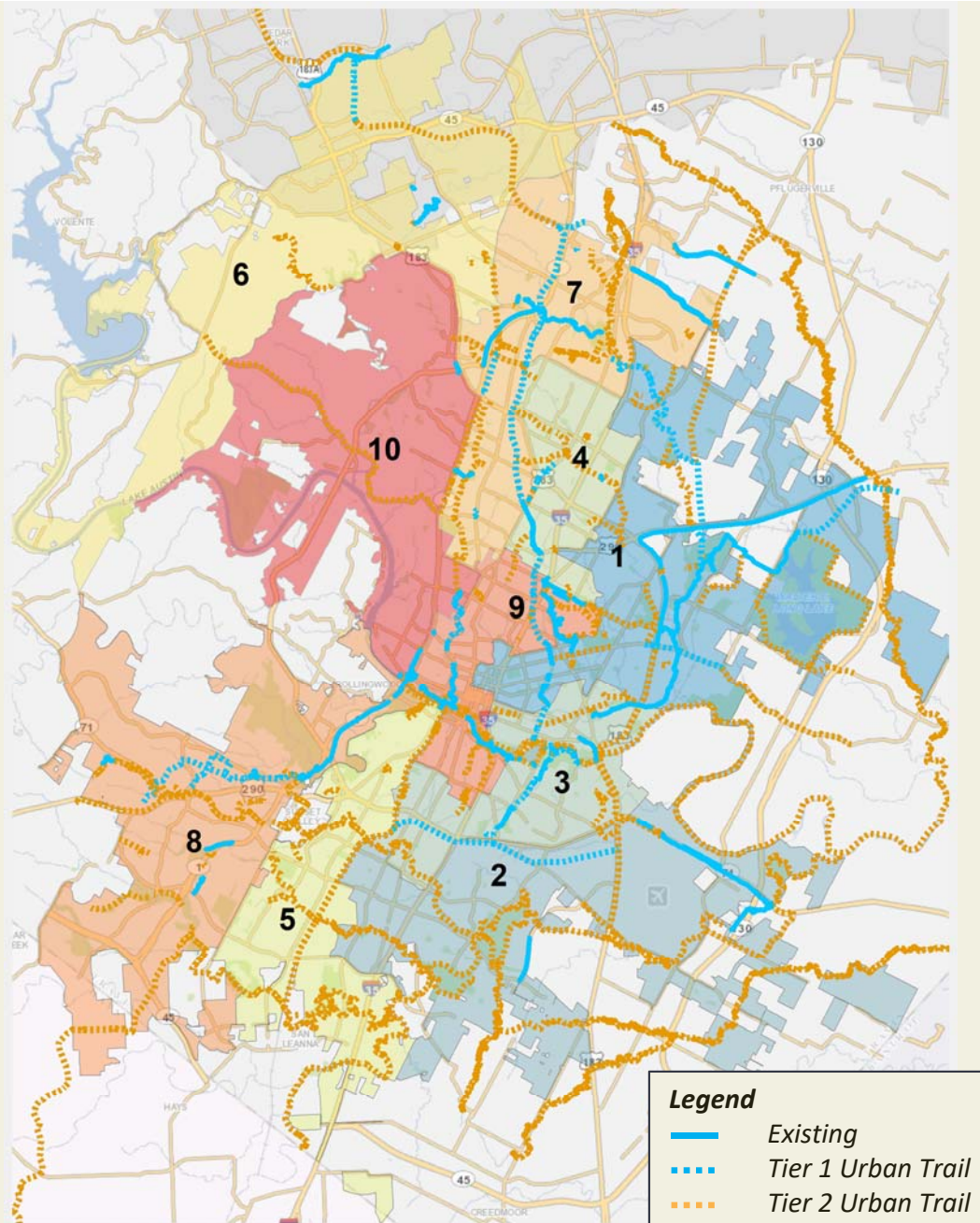
Goals of Urban Trail Program

1. Easy **access** to transportation + recreation users from all parts of the City.
2. **Connect** to on-street bicycle + sidewalk networks.
3. **Adequate width** to accommodate transportation + recreation users.
4. Include **trail amenities/features** that create unique greenways.
5. **Adequate funding** and resources to **maintain + operate**.
6. **Context-sensitive, environmentally sustainable, preservation + improvement upon wildlife habitat.**



Urban Trail Plan

- Completed October 2014
- 47 Miles -Tier I
- 360 Miles- Tier II



Urban Trail Implementation Plan



*Tier II Urban Trails were identified during the UTMP or previous planning processes. Development of Tier II Urban Trails will occur upon adjacent development, planning, or land use changes. All Urban Trails identified in the UTMP are conceptual in nature. Specific routing for Urban Trails is determined during the PER and design phases.

Urban Trail Implementation Plan

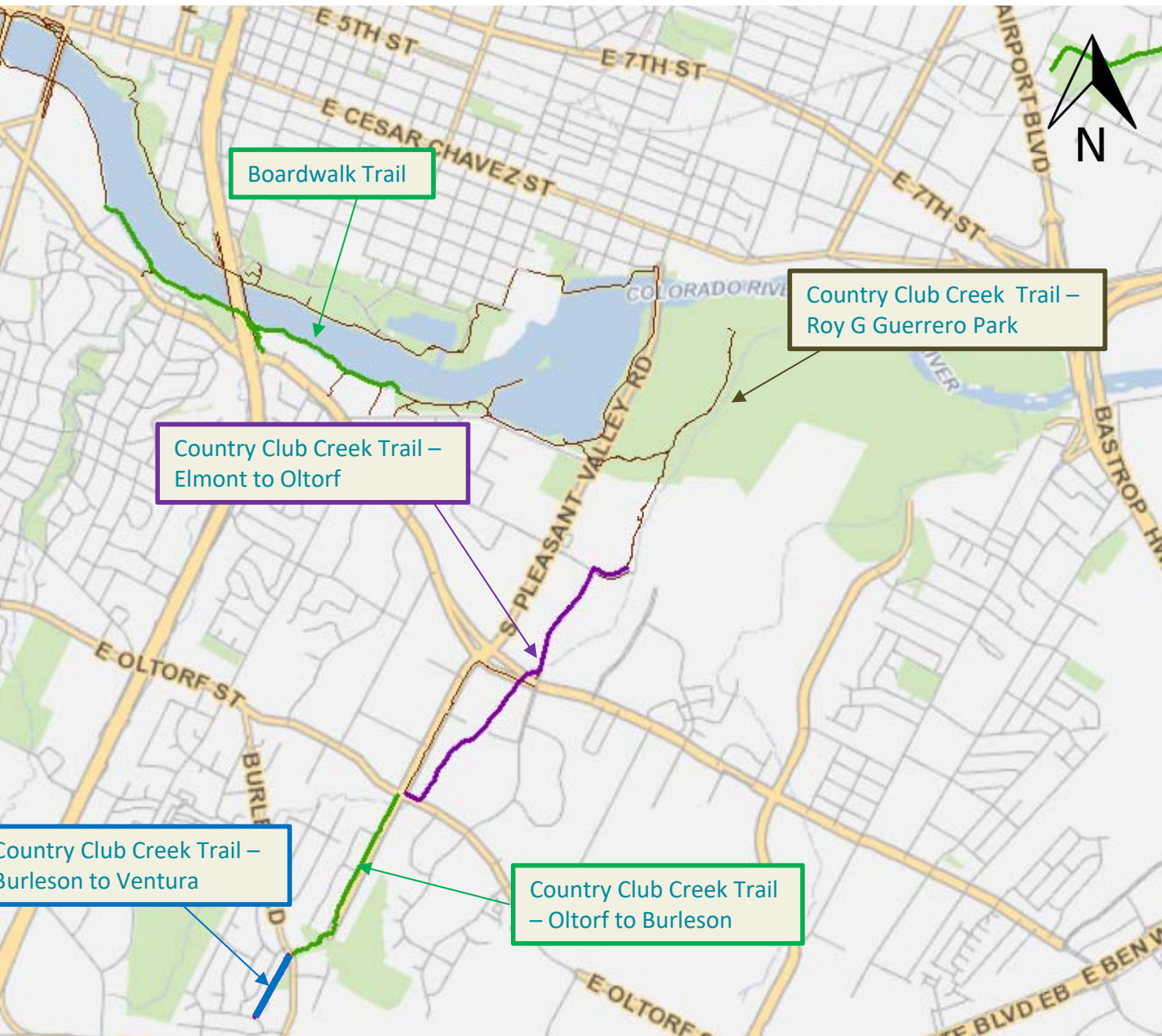


*Tier II Urban Trails were identified during the UTMP or previous planning processes. Development of Tier II Urban Trails will occur upon adjacent development, planning, or land use changes. All Urban Trails identified in the UTMP are conceptual in nature. Specific routing for Urban Trails is determined during the PER and design phases.

Project Briefings

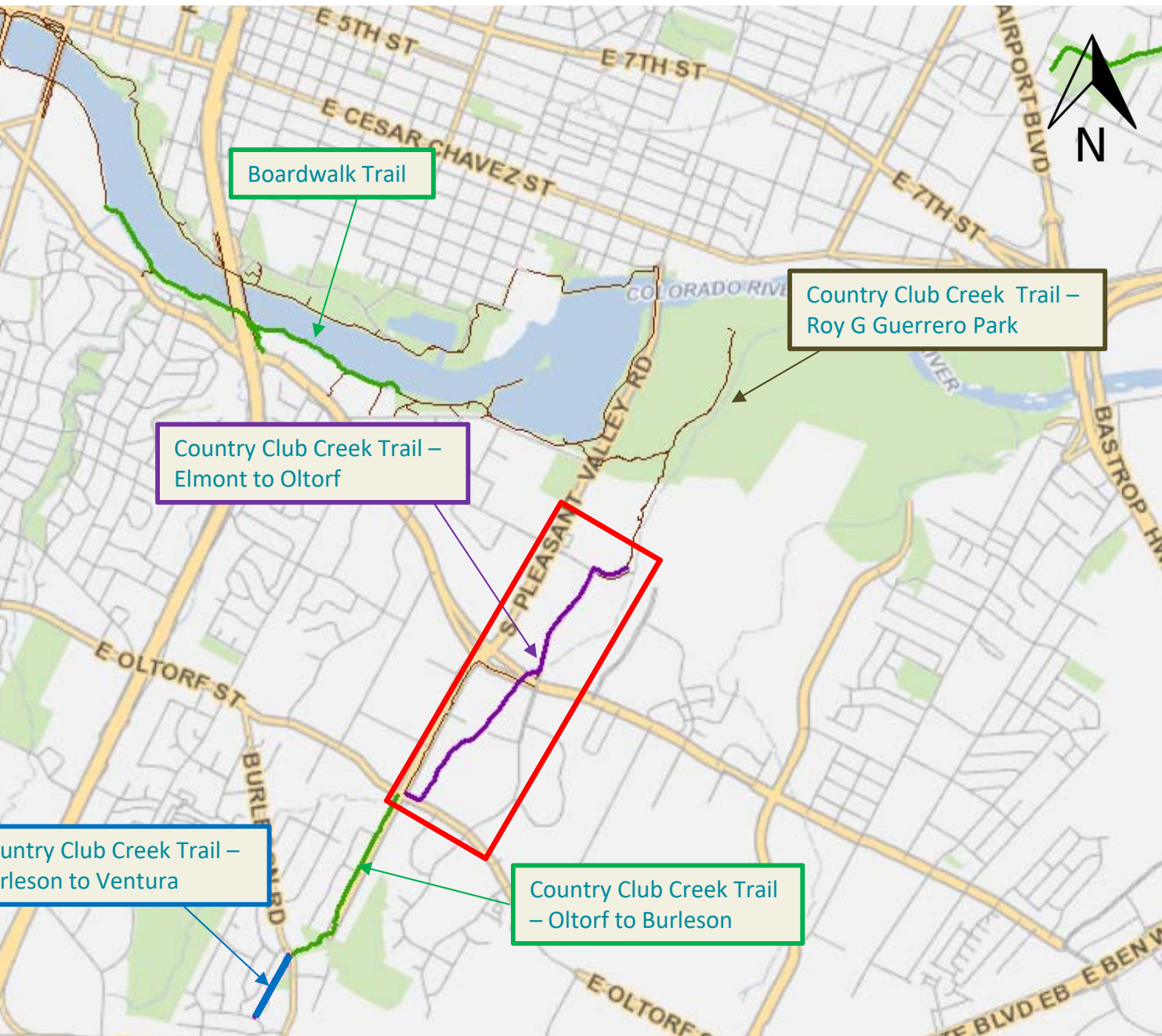


- **Dec. 3, 2018 - Pedestrian Advisory Council**
- **Dec.11, 2018– Urban Transportation Commission**
- **Dec. 18, 2018 – Bicycle Advisory Council**
- **Feb. 28, 2019 – Mobility Committee**
- **April 3, 2019 – Environmental Commission**



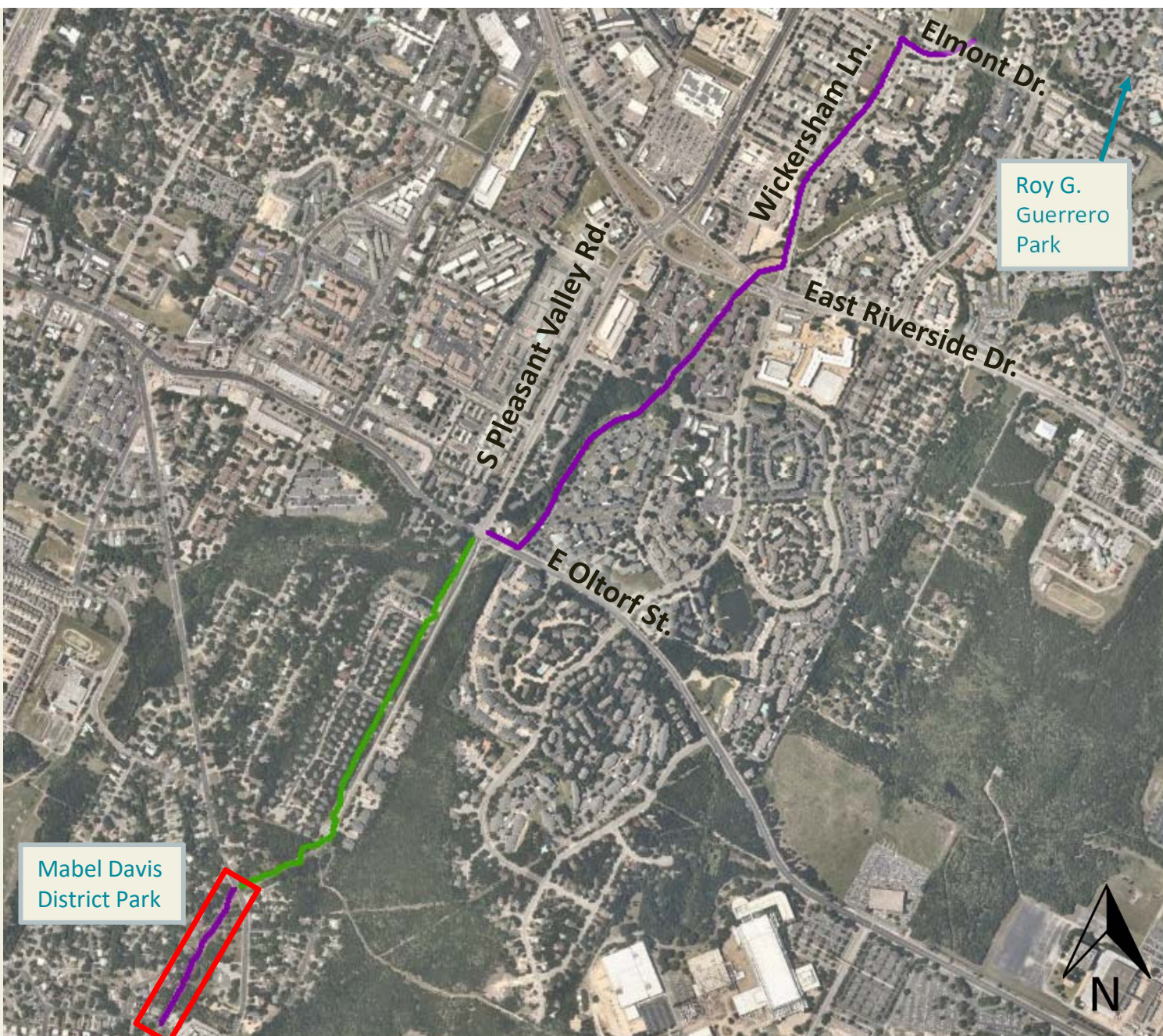
Country Club Creek Trail

Elmont Dr – E Oltorf St



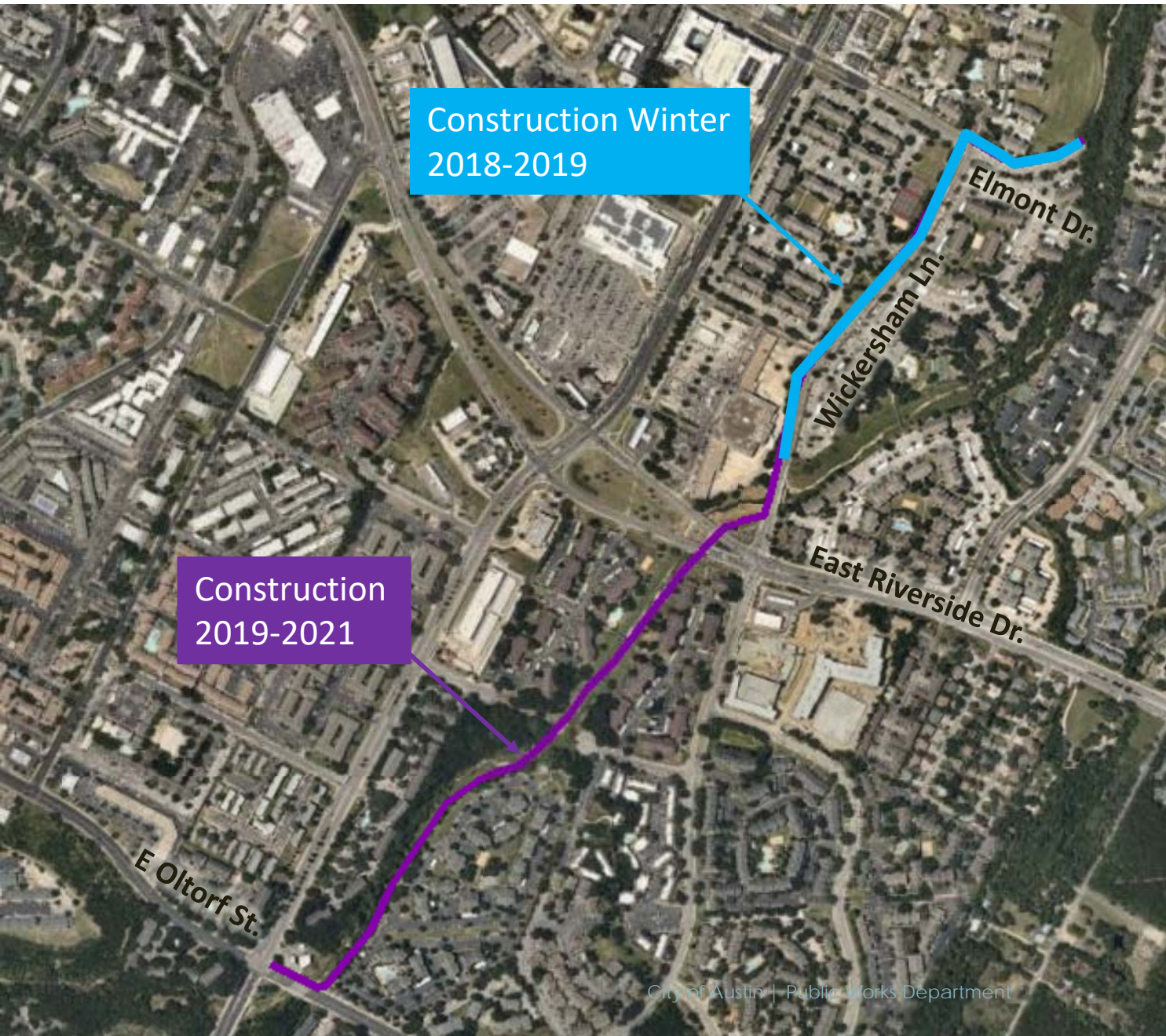
Country Club Creek Trail

Elmont Dr – E Oltorf St



Country Club Creek Trail

Elmont Dr – E Oltorf St – Burleson



Construction Winter
2018-2019

Construction
2019-2021

Country Club Creek Trail

Elmont Dr – E Oltorf St

Country Club Creek Trail – Elmont Dr to E Oltorf St



Project Scope

- 12 ft. wide concrete trail
- Approximately 1 mile
- Lighting will be included

Project Funding

- \$6.25M total cost
 - \$6.25M - 2016 Bond – Design & Construction

Status – 60% Design (E Riverside to E Oltorf section)

Tentative Construction Timeframe- Winter 2020 – Spring 2022

Public Outreach



- 2 Public Meetings held in PER phase
- Completed outreach regarding removal of parking on Wickersham Lane
- 1 Public Meeting for 60% design status report
- 1 Pre-Construction Meeting
- Landowner engagement
- Urban Trails website
 - <http://austintexas.gov/CountryClubCreekTrail>
- Capital Project Explorer Updates
- Mobility Annual Plan

Environmental Impacts & Mitigation

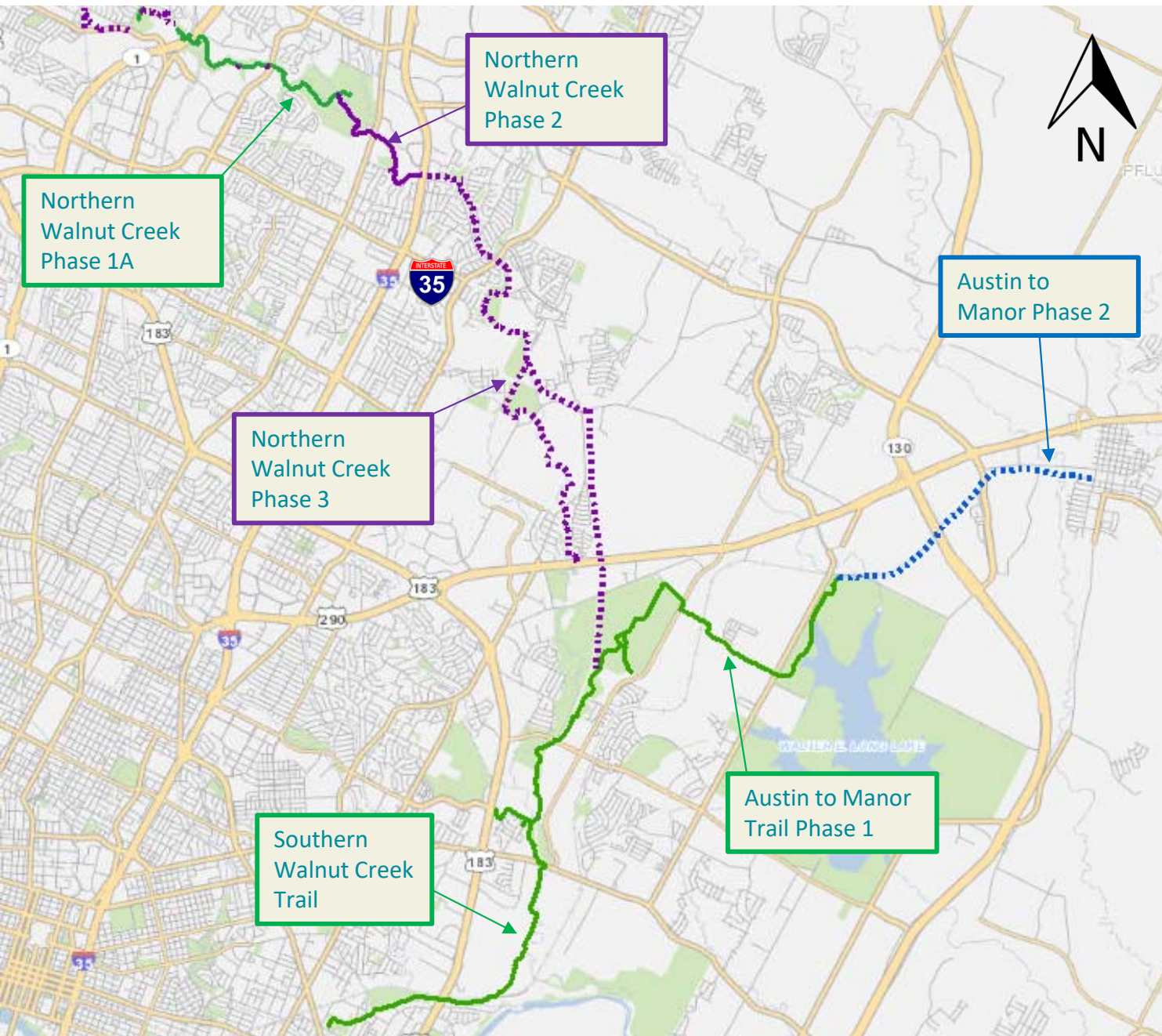


Variances

- Administrative variance for trail in inner half of CWQZ
LDC 25-8-42

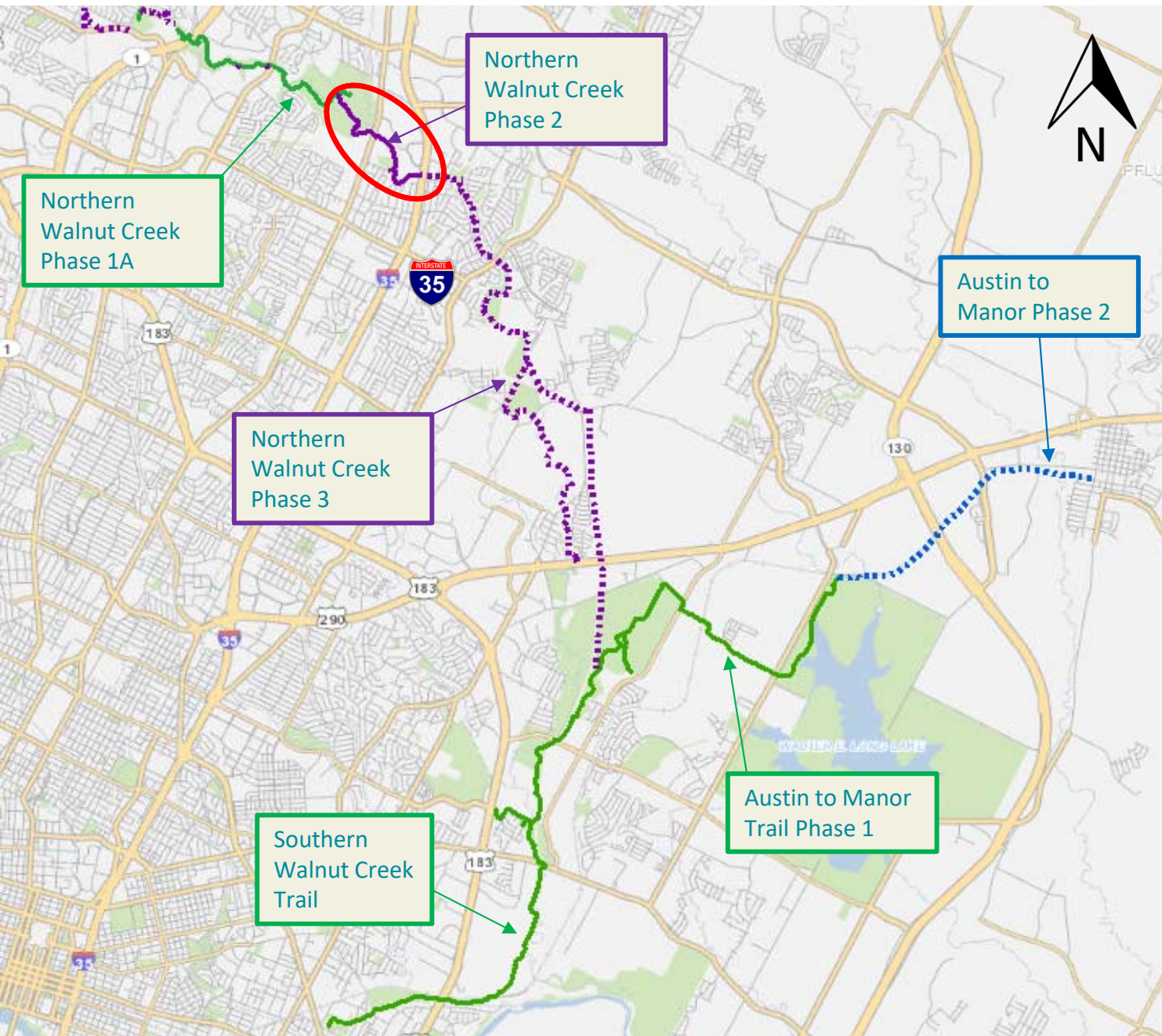
Impacts

- Tree removal and replacement
 - 72 trees to be removed
 - No heritage trees
 - 3 “protected” trees
 - 336” total caliper inches of replacement
- Erosion hazard zone mitigation will be required
- Floodplain – no adverse impacts to existing buildings or roadways



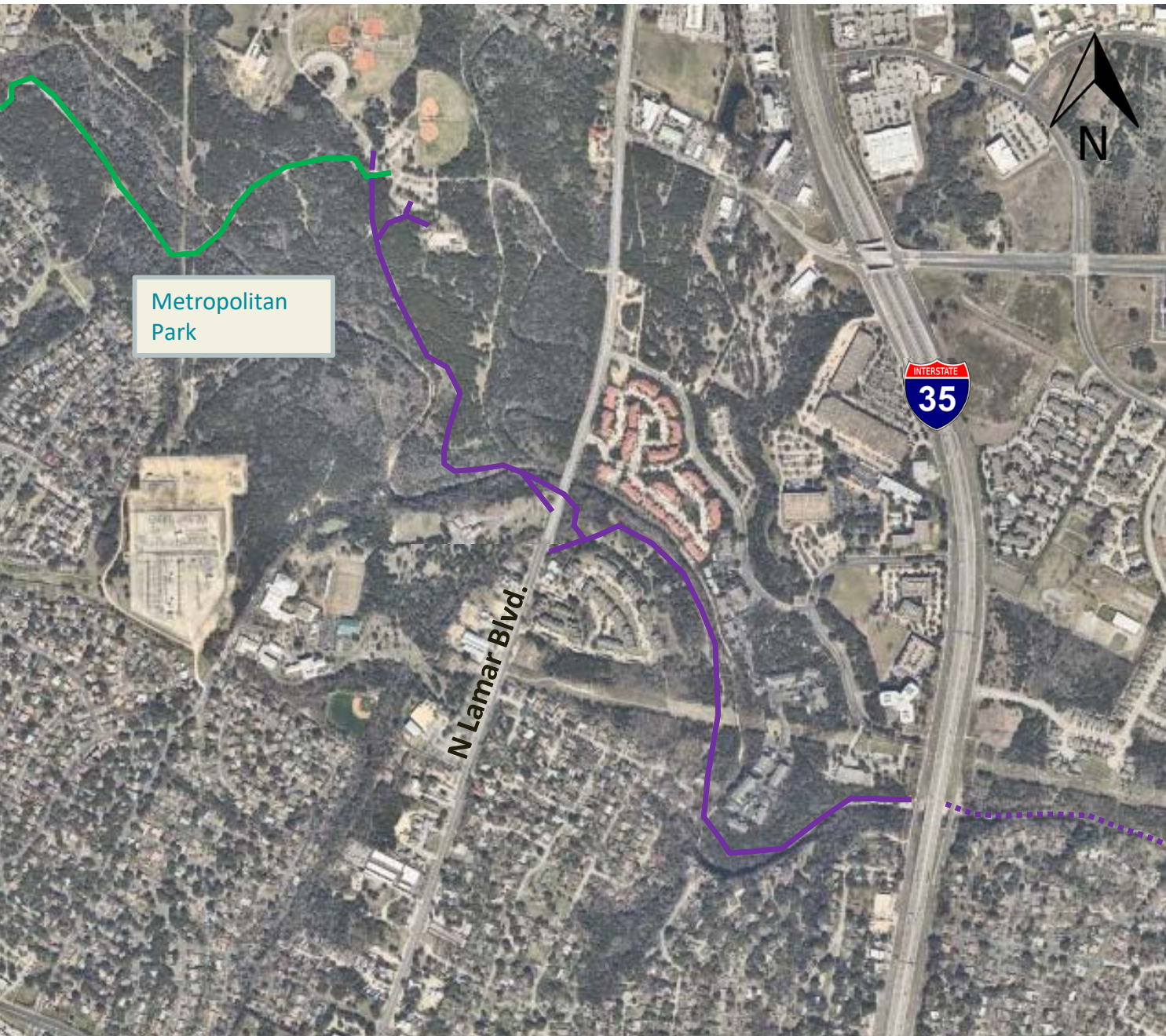
Northern Walnut Creek Trail Ph 2

Walnut Creek
Metropolitan Park –
IH-35



Northern Walnut Creek Trail Ph 2

Walnut Creek
Metropolitan Park –
IH-35



Northern Walnut Creek Trail Ph 2

Walnut Creek
Metropolitan Park –
IH-35

Northern Walnut Creek Trail Ph 2

–Walnut Creek Park to IH-35



Project Scope

- 12 ft. wide concrete trail
- 1.67 miles

Project Funding–

- \$6.74M total cost
 - \$86,000 PARD 2006 P3 -Design
 - \$930,000 PARD – Park Dedication - Design
 - \$2.5M – 2016 Bond – Design & Construction
 - \$1.5M – TxDOT Grant – Construction
 - \$1.72M - TBD

Status – 60% Design submitted and reviewed

Tentative Construction Timeframe- Fall 2020- Fall 2022

Northern Walnut Creek Trail Ph 2 –Walnut Creek Park to IH-35



Public Outreach

- Jan. 2014: Information Meeting- Little Walnut Creek Library
- April 2017: Public Meeting – Walnut Creek Elementary
- Late 2019: Public Meeting for 60% design status report
- Outreach through implementation of Southern Walnut Creek, Northern Walnut Creek Ph 1, and Walnut Creek Ph 3 meetings.
- Urban Trails website
 - <https://austintexas.gov/page/walnut-creek-trail-system>
- Capital Project Explorer Updates
- Mobility Annual Plan

Environmental Impacts & Mitigation

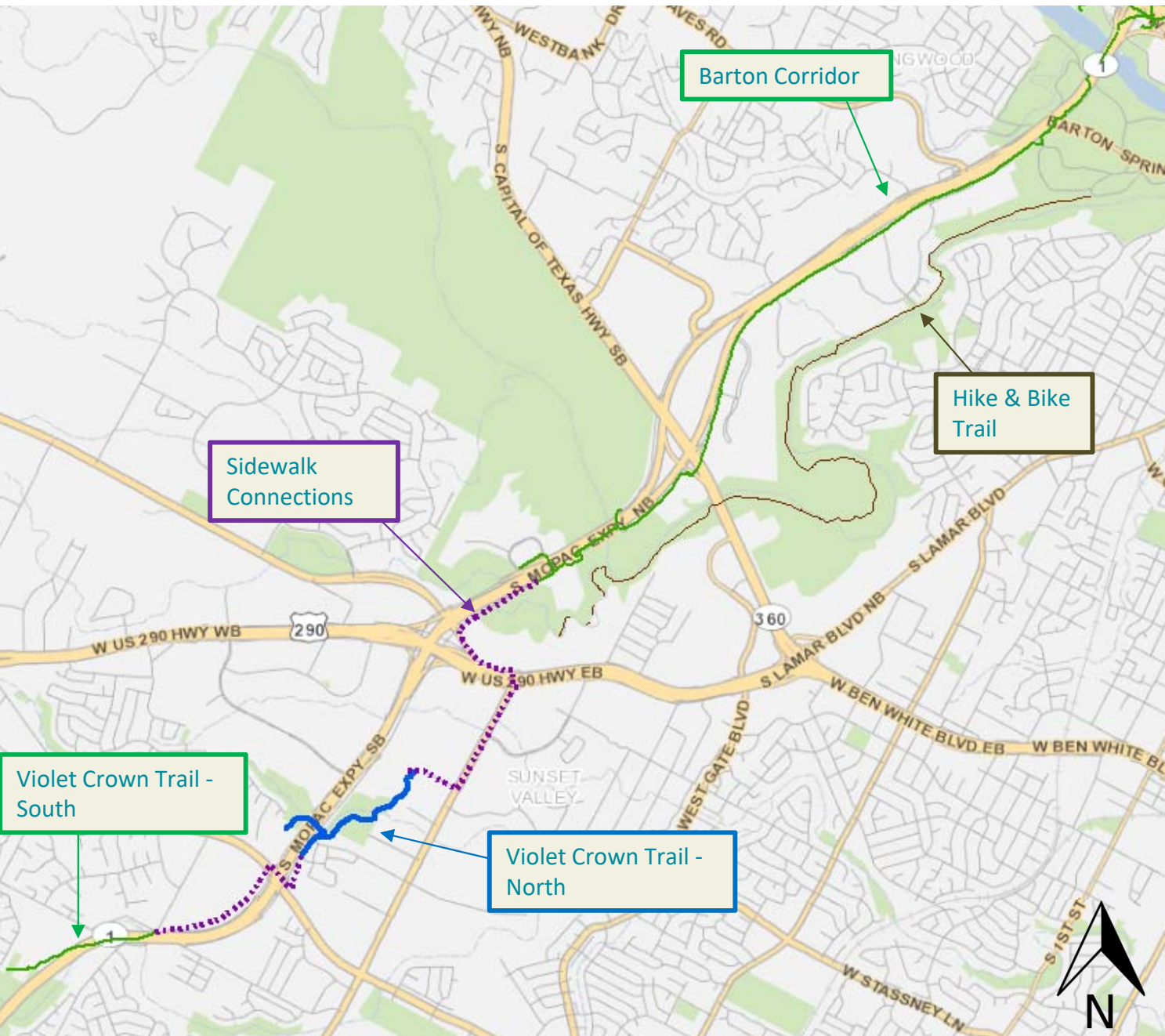


Variances

- Administrative
 - Critical Environmental Features – rim rock
LDC 25-8-281
 - Trail within inner half of Critical Water Quality Zone
LDC 25-8-42

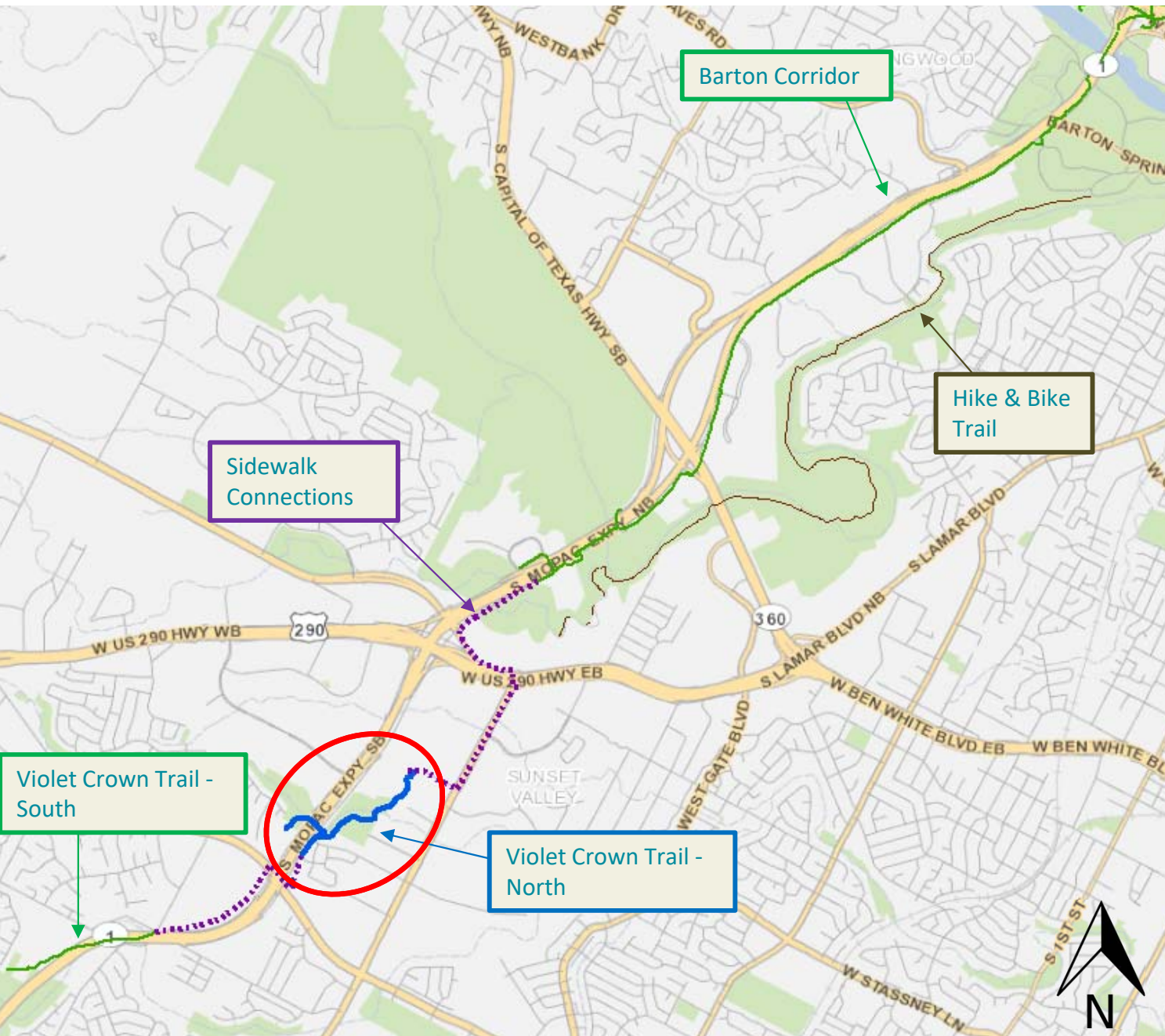
Impacts

- Erosion hazard zone mitigation will be required
- Floodplain – Minor impacts to floodplain
- Mitigating tree removal by using alignment of existing nature trail



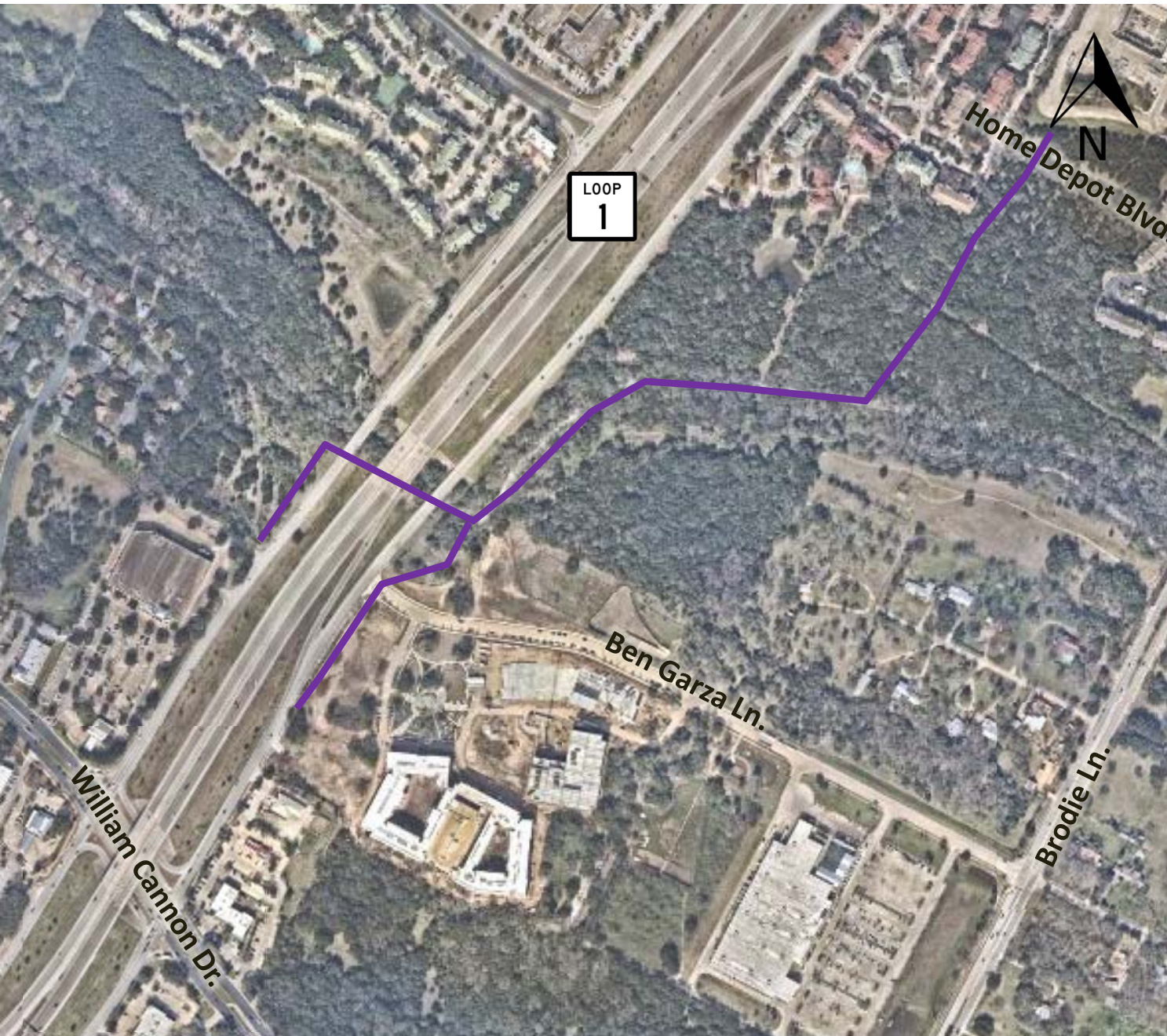
Violet Crown Trail - North

Home Depot Blvd –
MoPac Expressway &
William Cannon Dr



Violet Crown Trail - North

Home Depot Blvd –
MoPac Expressway &
William Cannon Dr



Violet Crown Trail - North

Home Depot Blvd –
MoPac Expressway &
William Cannon Dr

Violet Crown Trail North – William Cannon to Home Depot Blvd



Project Scope

- 10-11ft. wide Concrete & Stalok
- 1 mile

Project Funding

- \$2.7M total cost
 - \$550,000 - 2012 Bond – Design
 - \$1,000,000 - 2016 Bond – Design & Construction
 - \$1,200,000 - CAMPO – Construction

Status – 90% Design

Tentative Construction Timeframe- Early 2020 – Mid 2021

Violet Crown Trail North – William Cannon to Home Depot Blvd



Public Outreach

- July 2014: Public Meeting – Hampton Public Library
 - *Community feedback led to change in trail alignment*
- Jan. 2015: Public Meeting – Hampton Public Library
- Feb. 2015: Neighborhood Walkabout Meeting
- Sept. 2017: VCT South meeting- Hampton Public Library
- Late 2019: Next public meeting
- Close coordination and engagement from Hill Country Conservancy
- Urban Trails website
 - <http://austintexas.gov/violetcrowntrail>
- Capital Project Explorer Updates
- Mobility Annual Plan

Environmental Impacts & Mitigation



Variances

- Administrative variance granted for Critical Environmental Features
 - Sink
- LDC 25-8-281(C)(3)

Impacts

- Tree removal
 - 60 trees planted in Austin and 48 planted in Sunset Valley as mitigation
- Floodplain – no adverse impacts to downstream buildings or roadways

All Current Projects



Project	Status
Austin to Manor – Phase 2*	60% Design
Bergstrom Spur Study	Planning
Country Club Creek Trail – Burleson to Ventura	Substantially Complete
Country Club Creek Trail – Elmont to Oltorf	60% Design
La Loma Trail	100% PER
Northern Walnut Creek Trail – Phase 1A	Substantially Complete
Northern Walnut Creek Trail – Phase 2	60% Design
Northern Walnut Creek Trail – Phase 3	60% PER
Red Line Trail – Braker to Walnut Creek*	90% PER
Southern Walnut Creek Renovation	90% Design
Upper Boggy Creek – Red Line Trail	80% Construction
Violet Crown Trail – North	90% Design
YBC Trail*	10% Design



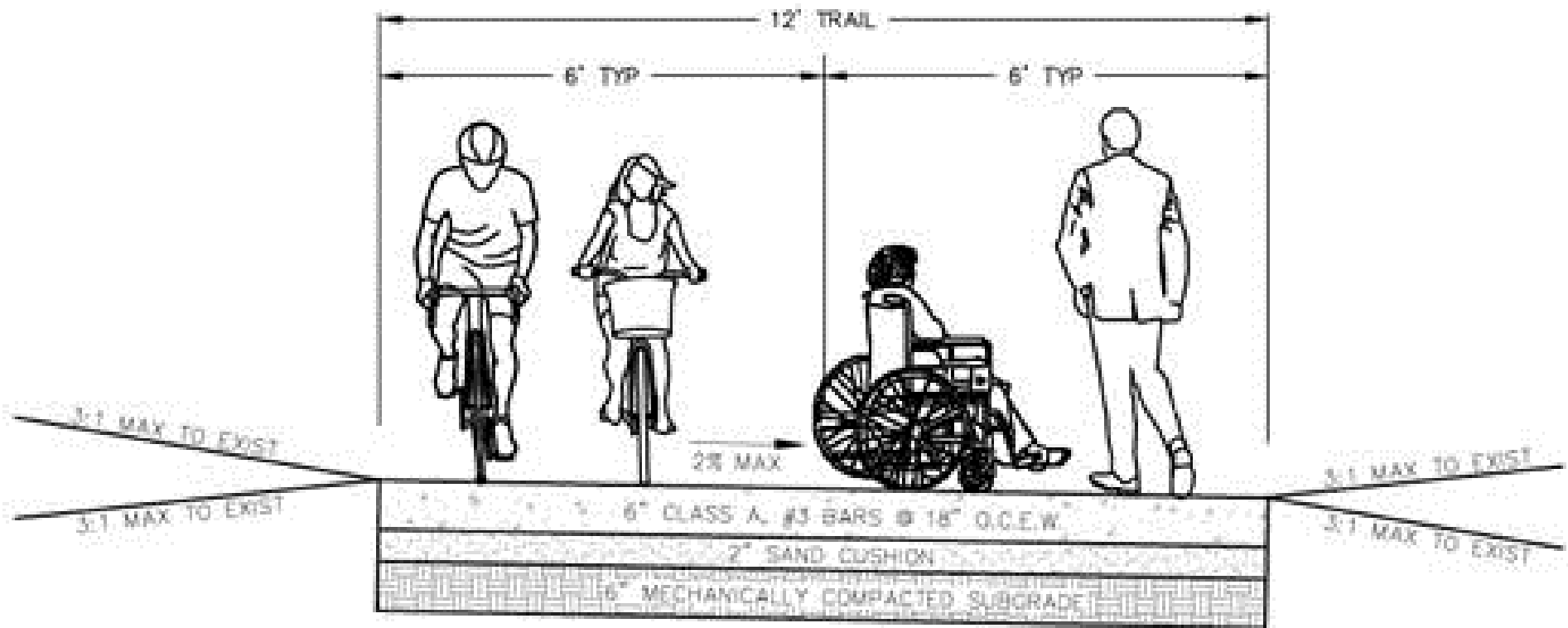
CITY OF AUSTIN
PUBLIC WORKS DEPARTMENT
CONNECTING YOU ALL AROUND AUSTIN

Questions?

Janae Spence
Urban Trails Program Manager
Janae.Spence@austintexas.gov
512.974.3159



Typical Trail Details



TRAIL TYPICAL SECTION – SEGMENT 1

N.T.S.