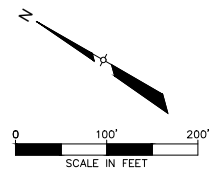
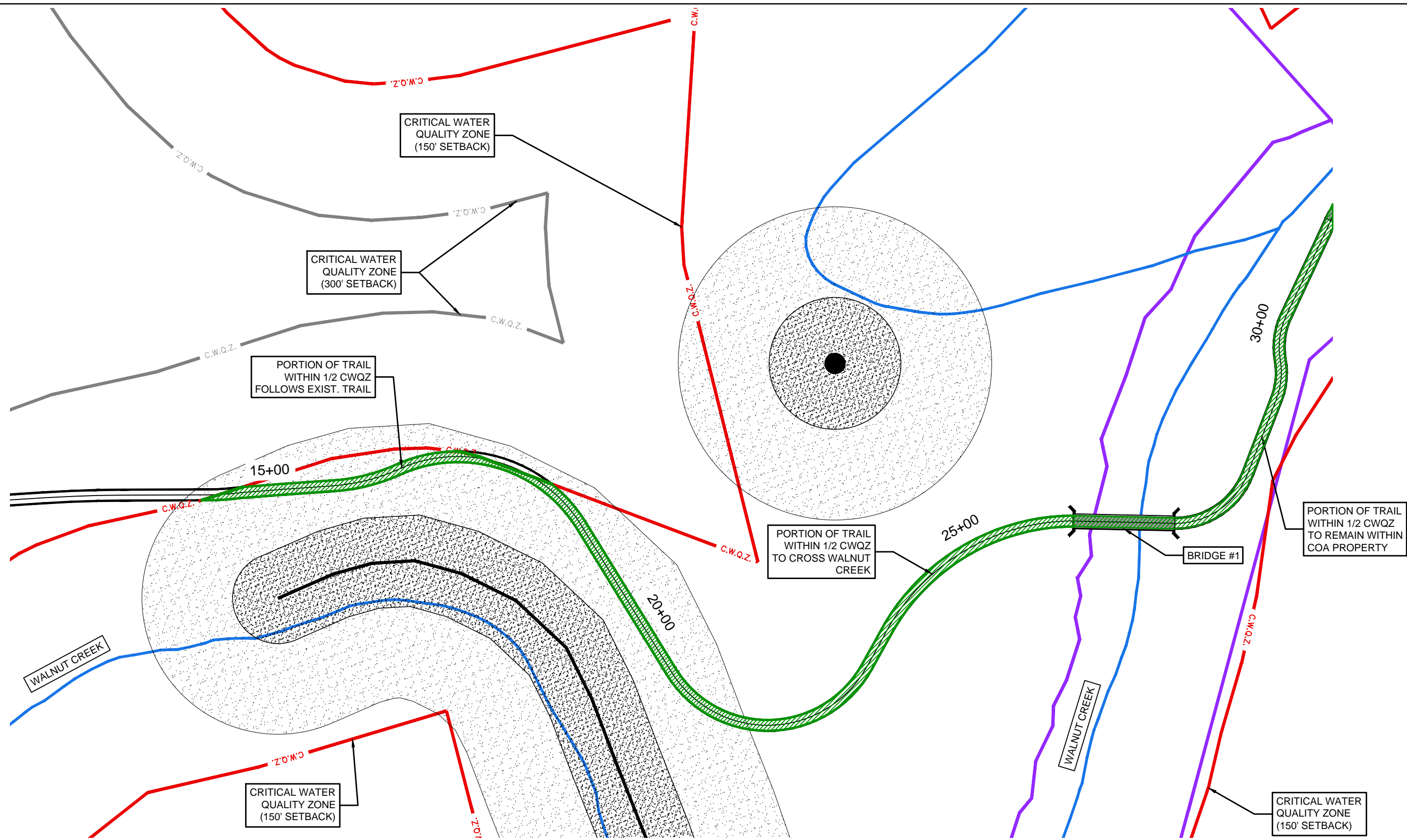


P:\09001.20 N. Walnut Crk. Trail_Ph. IICADD-09001.20\exh. 1/23/2019 8:01 AM



	CREEK CENTERLINE		TRAIL REALIGNMENT
	PROP. TRAIL ALIGNMENT		50' CEF BUFFER
	CRITICAL WATER QUALITY ZONE (300-FT SETBACK)		150' CEF BUFFER
	CRITICAL WATER QUALITY ZONE (150-FT SETBACK)		CONFLICT AREA
	EROSION HAZARD ZONE		
	COA PROPERTY LINE		



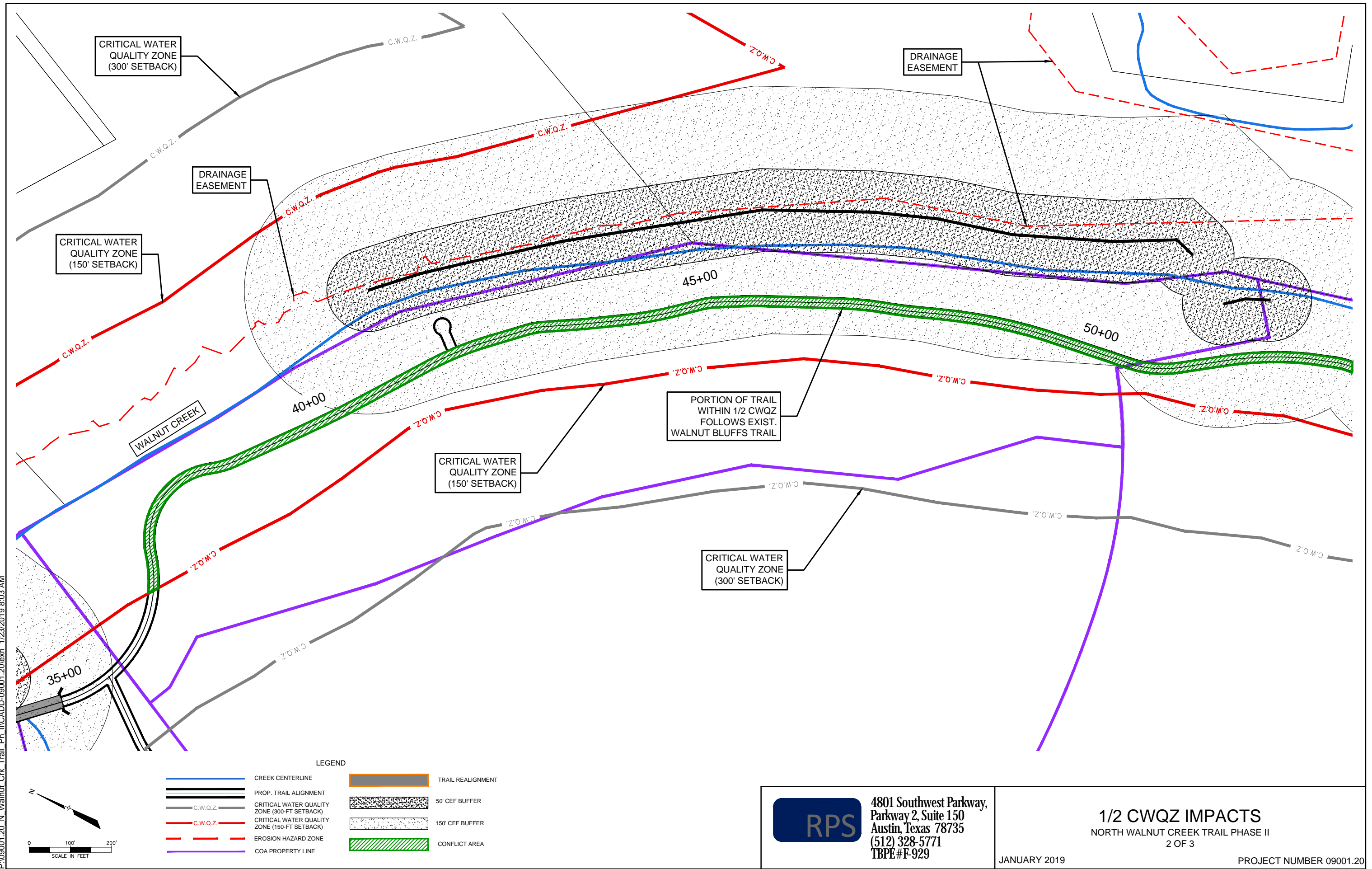
4801 Southwest Parkway,
Parkway 2, Suite 150
Austin, Texas 78735
(512) 328-5771
TBPE#F-929

1/2 CWQZ IMPACTS NORTH WALNUT CREEK TRAIL PHASE II 1 OF 3

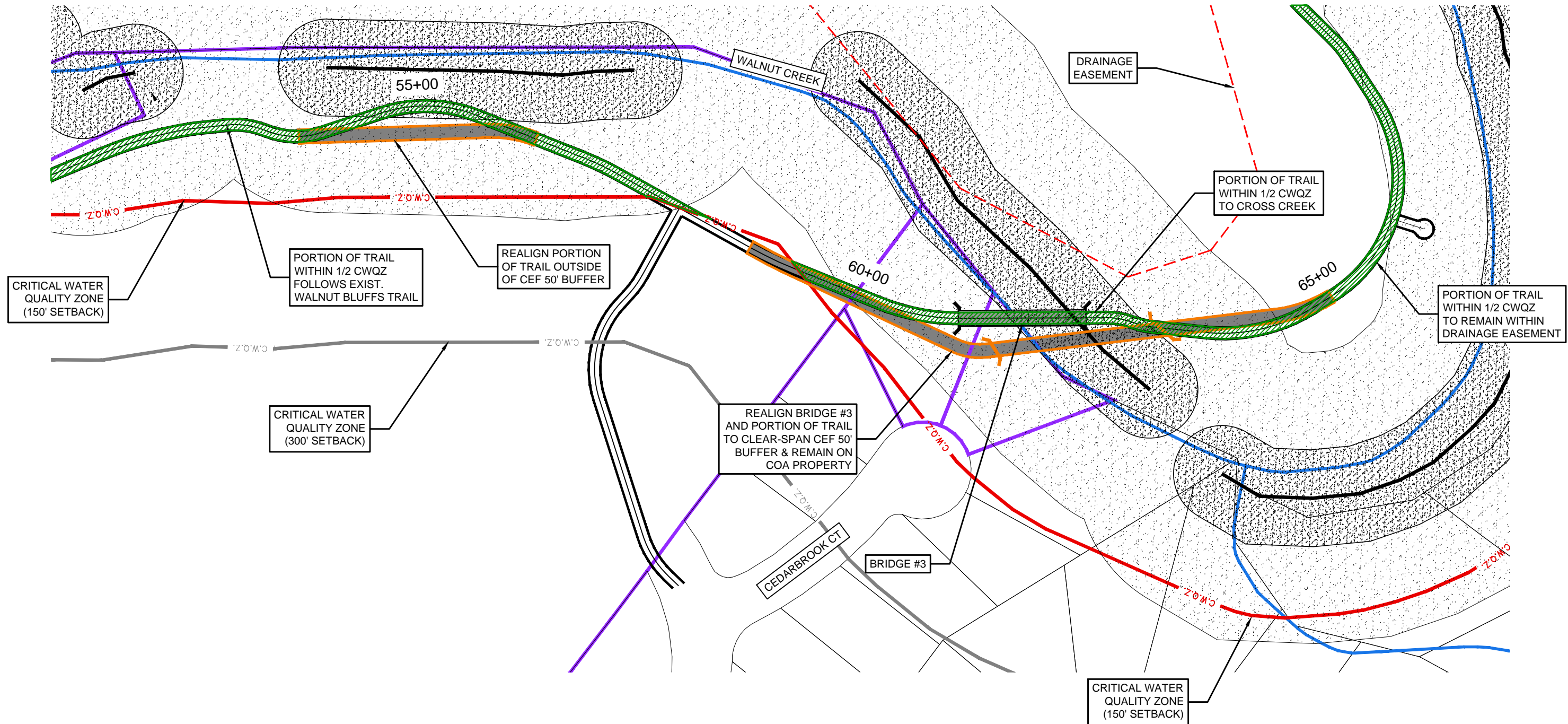
JANUARY 2019

PROJECT NUMBER 09001.20

P:\090001.20 N. Walnut Crk. Trail_Ph. I\ICADD-09001.20\exh. 1/23/2019 8:03 AM

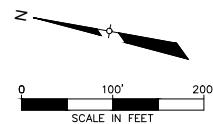


P:\090001.20 N. Walnut Crk Trail_Phase II\CADD\09001.20\exh 1/23/2019 8:05 AM



LEGEND

	CREEK CENTERLINE		TRAIL REALIGNMENT
	PROP. TRAIL ALIGNMENT		50' CEF BUFFER
	C.W.Q.Z.		150' CEF BUFFER
	C.W.Q.Z.		CONFLICT AREA
	EROSION HAZARD ZONE		
	COA PROPERTY LINE		



4801 Southwest Parkway,
Parkway 2, Suite 150
Austin, Texas 78735
(512) 328-5771
TBPE #F-929

1/2 CWQZ IMPACTS
NORTH WALNUT CREEK TRAIL PHASE II
3 OF 3

JANUARY 2019

PROJECT NUMBER 09001.20

Untitled Map

North Walnut Creek Trail Phase II

Legend

WALNUT CREEK

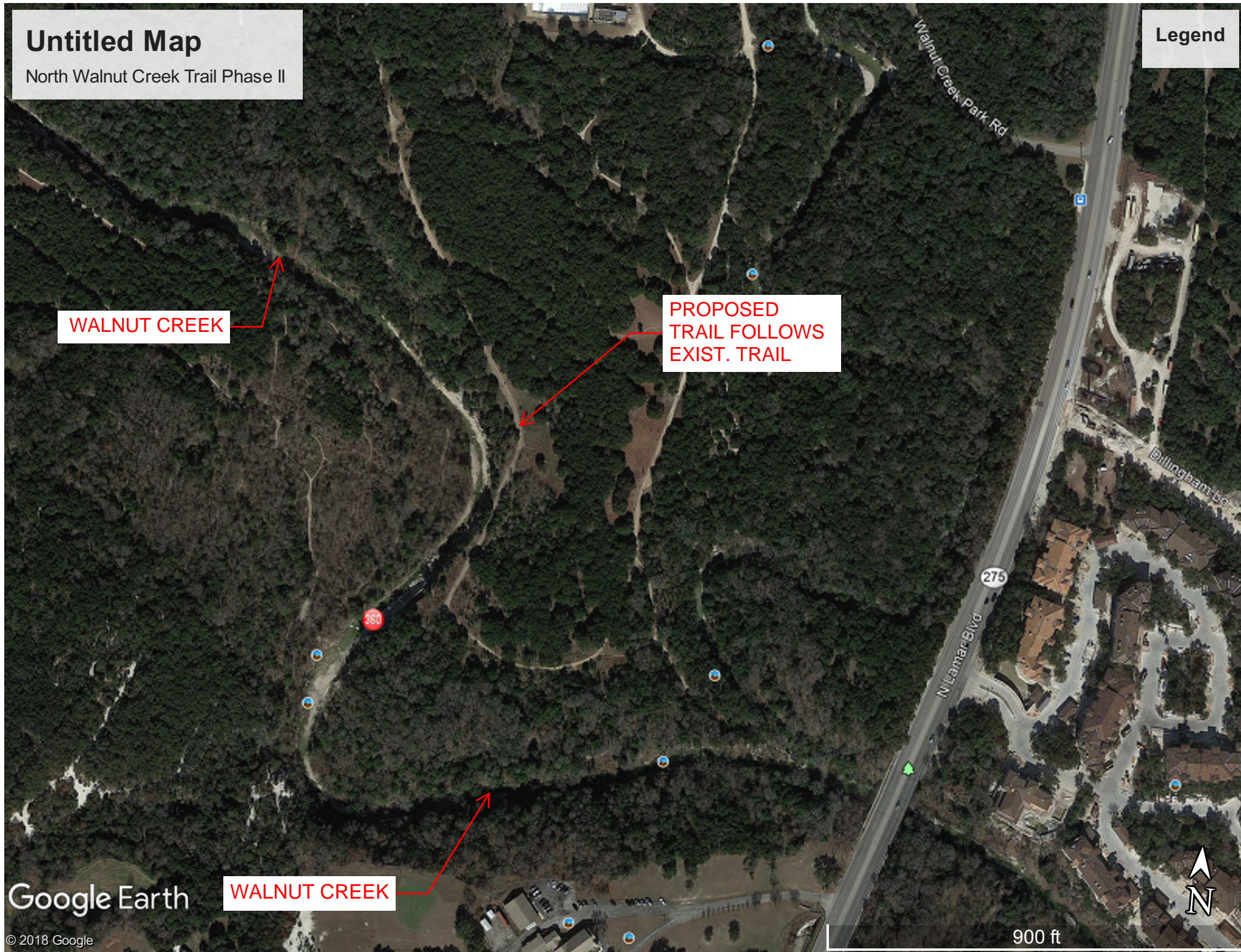
PROPOSED
TRAIL FOLLOWS
EXIST. TRAIL

WALNUT CREEK

Google Earth

© 2018 Google

900 ft



Untitled Map

North Walnut Creek Trail Phase II

Legend

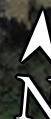
N. LAMAR BLVD.

WALNUT CREEK

TRAIL FOLLOWS
EXIST, WALNUT
BLUFFS TRAIL

Google Earth

© 2018 Google



900 ft