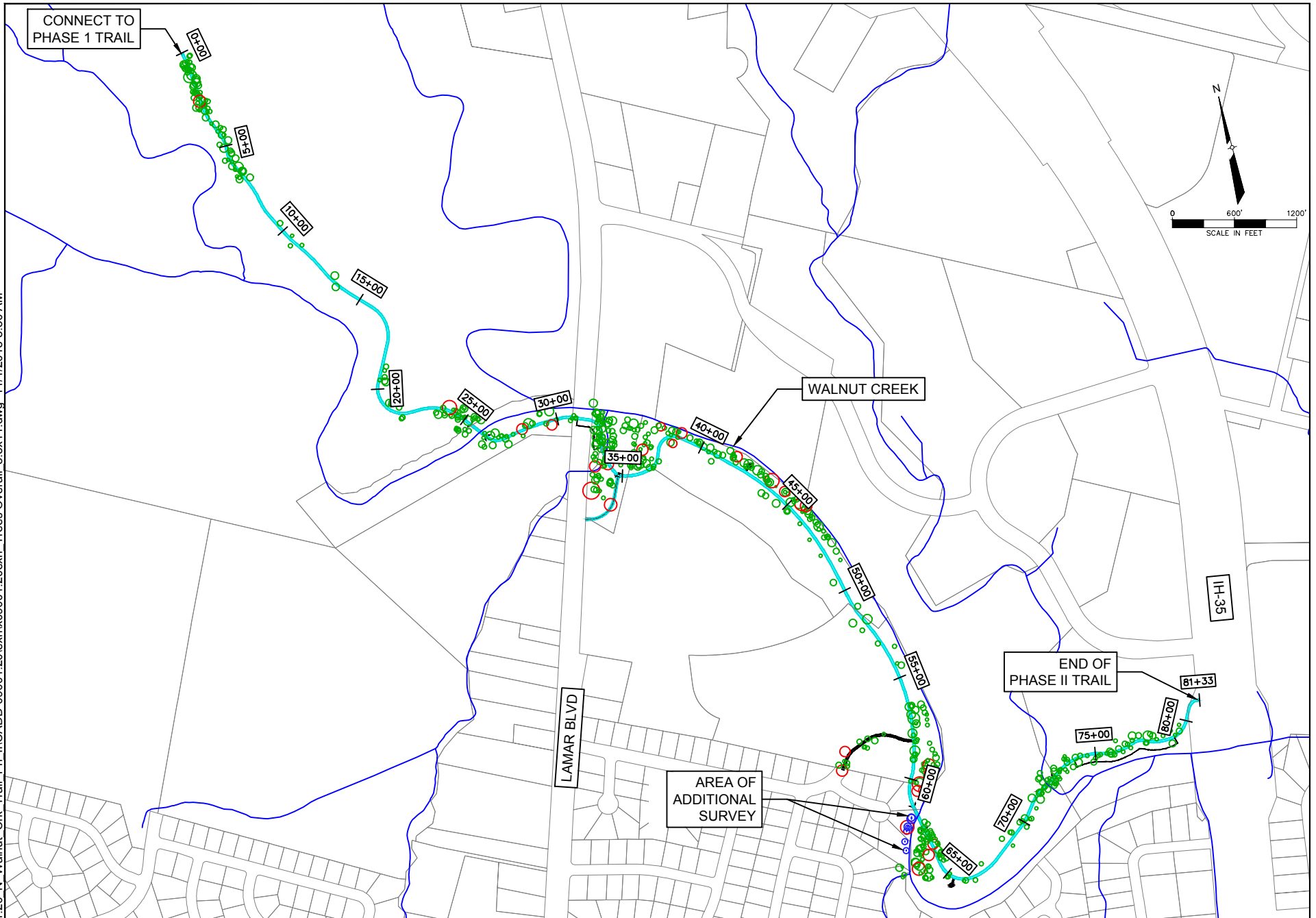


P:\active\09001.20 N Walnut Crk Trail\_Ph\_ILCADD-09001.20\exh\09001.20exh\_Trees Overall\_8.5x11.dwg 11/11/2018 8:50 AM



CONNECT TO PHASE 1 TRAIL

WALNUT CREEK






LAMAR BLVD

END OF PHASE II TRAIL

AREA OF ADDITIONAL SURVEY

IH-35

LEGEND

-  CREEK CENTERLINE
-  PROP. TRAIL ALIGNMENT
-  TREES IN ORIGINAL SURVEY
-  TREES IN ADDITIONAL SURVEY
-  HERITAGE TREE



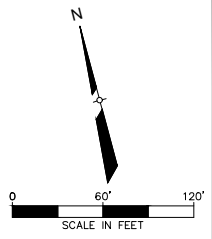
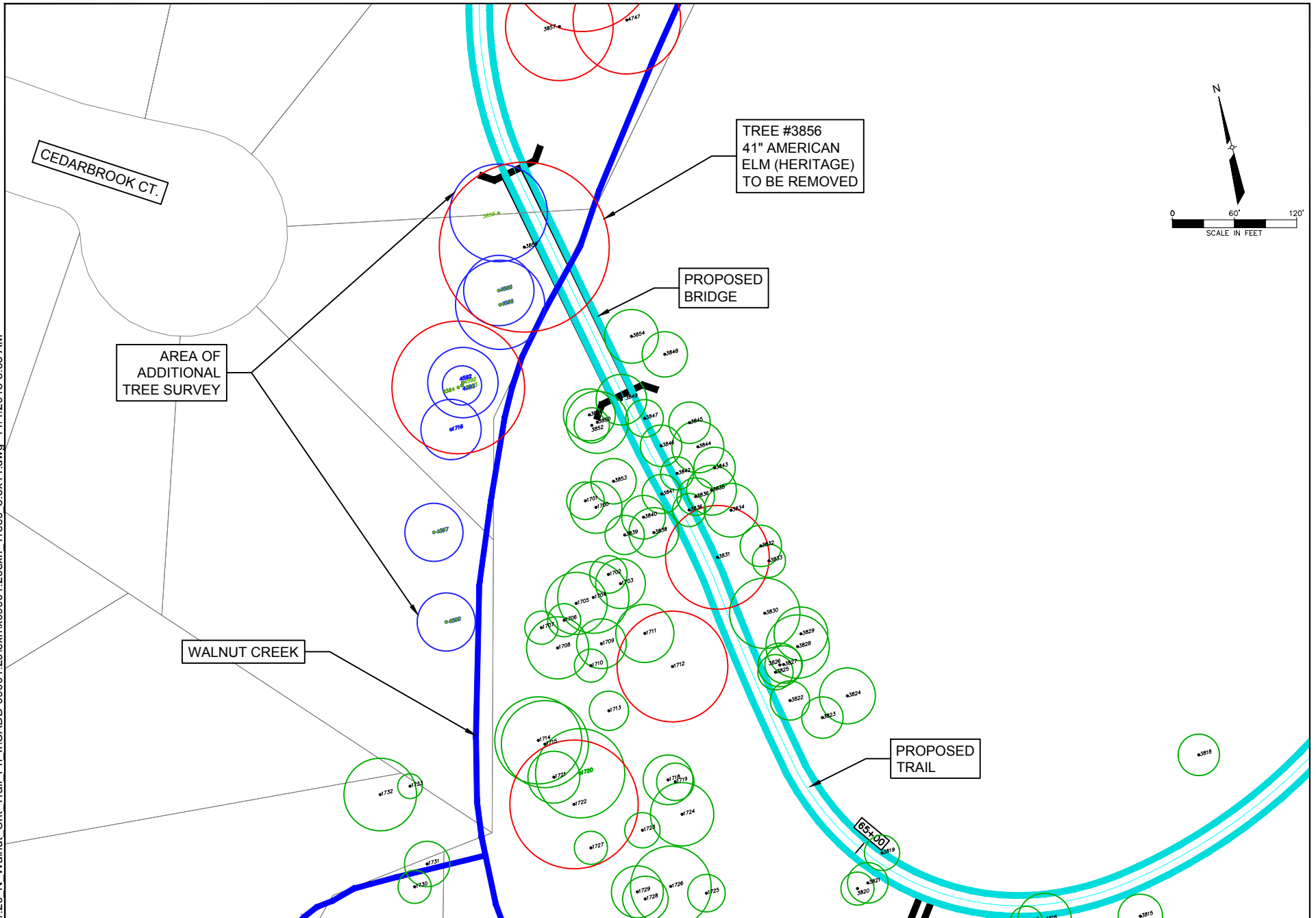
4801 Southwest Parkway,  
 Parkway 2, Suite 150  
 Austin, Texas 78735  
 (512) 326-5659  
 TBPE #F-929

**TREE SURVEY EXHIBIT**  
 NORTH WALNUT CREEK TRAIL PHASE II  
 1 OF 2

NOV 2018

PROJECT NUMBER 09001.20

P:\active\09001.20 N Walnut Crk Trail\_Ph\_ILICADD-09001.20\exh\09001.20exh\_Trees 8.5x11.dwg 11/1/2018 8:53 AM



AREA OF ADDITIONAL TREE SURVEY

TREE #3856  
41" AMERICAN  
ELM (HERITAGE)  
TO BE REMOVED

PROPOSED  
BRIDGE

WALNUT CREEK

PROPOSED  
TRAIL

- LEGEND
- CREEK CENTERLINE
  - PROP. TRAIL ALIGNMENT
  - TREES IN ORIGINAL SURVEY
  - TREES IN ADDITIONAL SURVEY
  - HERITAGE TREE



4801 Southwest Parkway,  
Parkway 2, Suite 150  
Austin, Texas 78735  
(512) 326-5659  
TBPE #F-929

**TREE SURVEY EXHIBIT**  
NORTH WALNUT CREEK TRAIL PHASE II  
2 OF 2

NOV 2018

PROJECT NUMBER 09001.20