

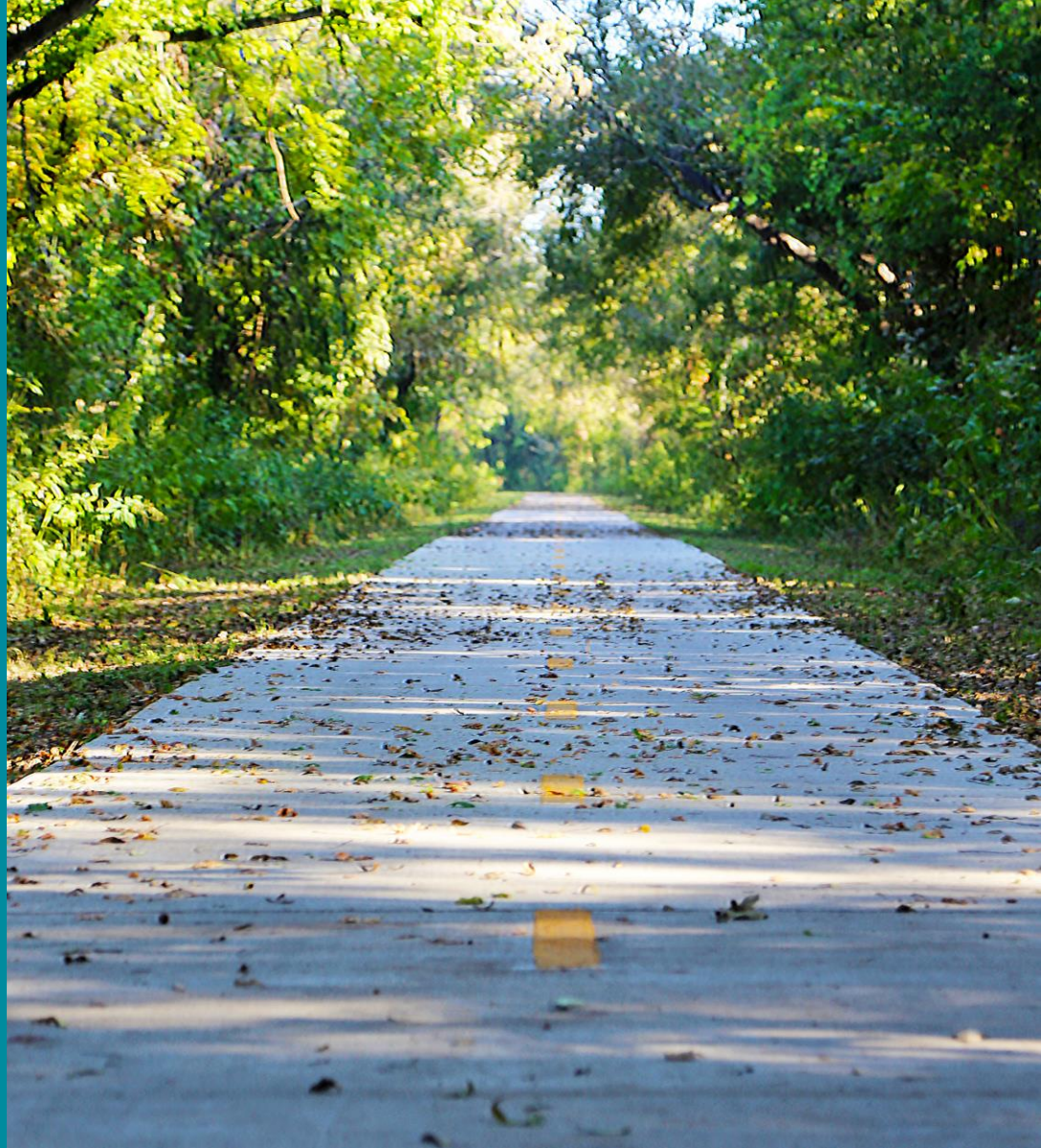
CITY OF AUSTIN  
PUBLIC WORKS DEPARTMENT

---

# Urban Trail Projects Updates

---

CONNECTING YOU  
ALL AROUND AUSTIN



# Agenda

---

- **Urban Trails Program Overview**
- **Urban Trails Master Plan requirements**
- **Project Updates**
  - **Country Club Creek Trail**
  - **Northern Walnut Creek Trail Ph 2**
  - **Violet Crown Trail – North**

# Goals of Urban Trail Program

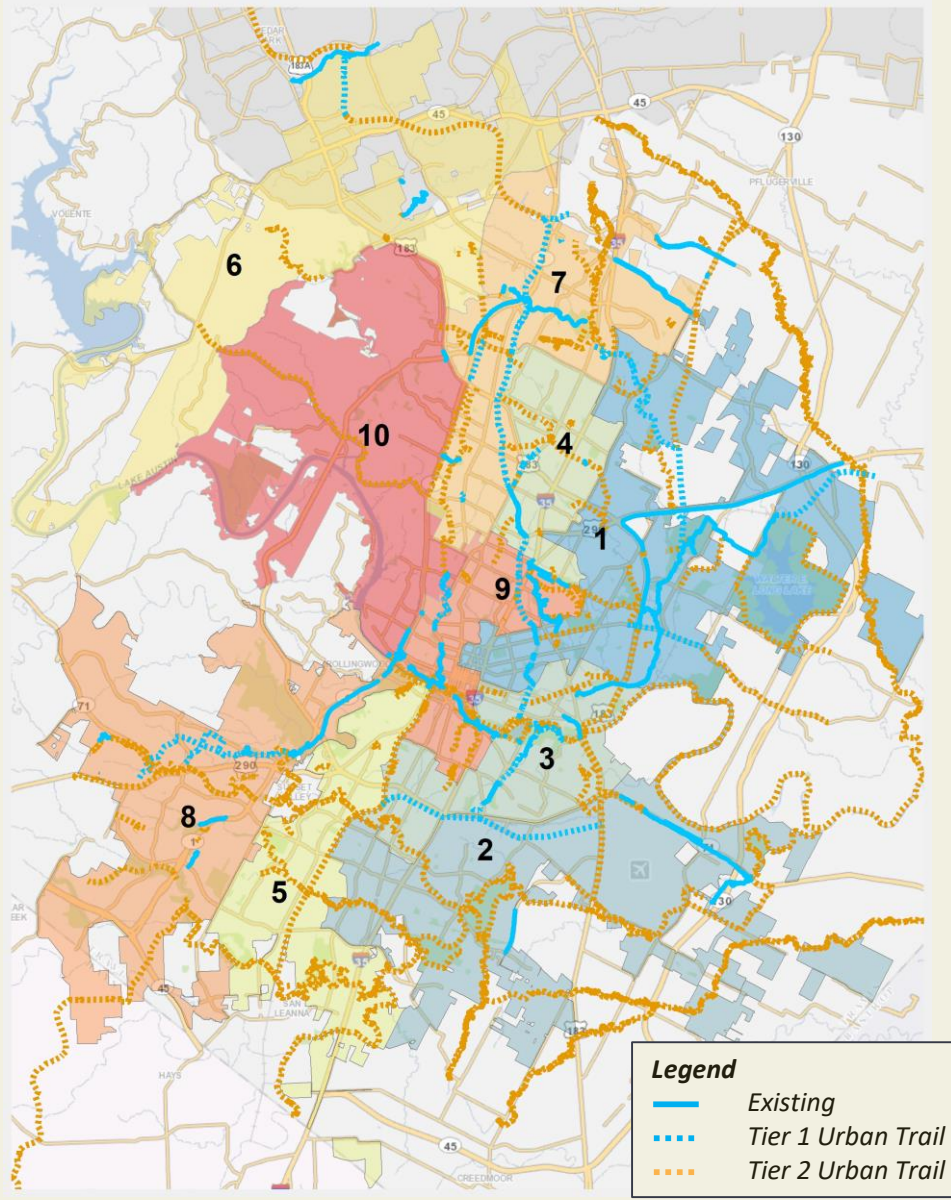
1. Easy **access** to transportation + recreation users from all parts of the City.
2. **Connect** to on-street bicycle + sidewalk networks.
3. **Adequate width** to accommodate transportation + recreation users.
4. Include **trail amenities/features** that create unique greenways.
5. **Adequate funding** and resources to **maintain + operate**.
6. **Context-sensitive, environmentally sustainable, preservation + improvement upon wildlife** habitat.





# Urban Trail Plan

- Completed October 2014
- 47 Miles -Tier I
- 360 Miles- Tier II



# Urban Trail Implementation Plan



\*Tier II Urban Trails were identified during the UTMP or previous planning processes. Development of Tier II Urban Trails will occur upon adjacent development, planning, or land use changes. All Urban Trails identified in the UTMP are conceptual in nature. Specific routing for Urban Trails is determined during the PER and design phases.

# Urban Trail Implementation Plan



\*Tier II Urban Trails were identified during the UTMP or previous planning processes. Development of Tier II Urban Trails will occur upon adjacent development, planning, or land use changes. All Urban Trails identified in the UTMP are conceptual in nature. Specific routing for Urban Trails is determined during the PER and design phases.

# Project Briefings

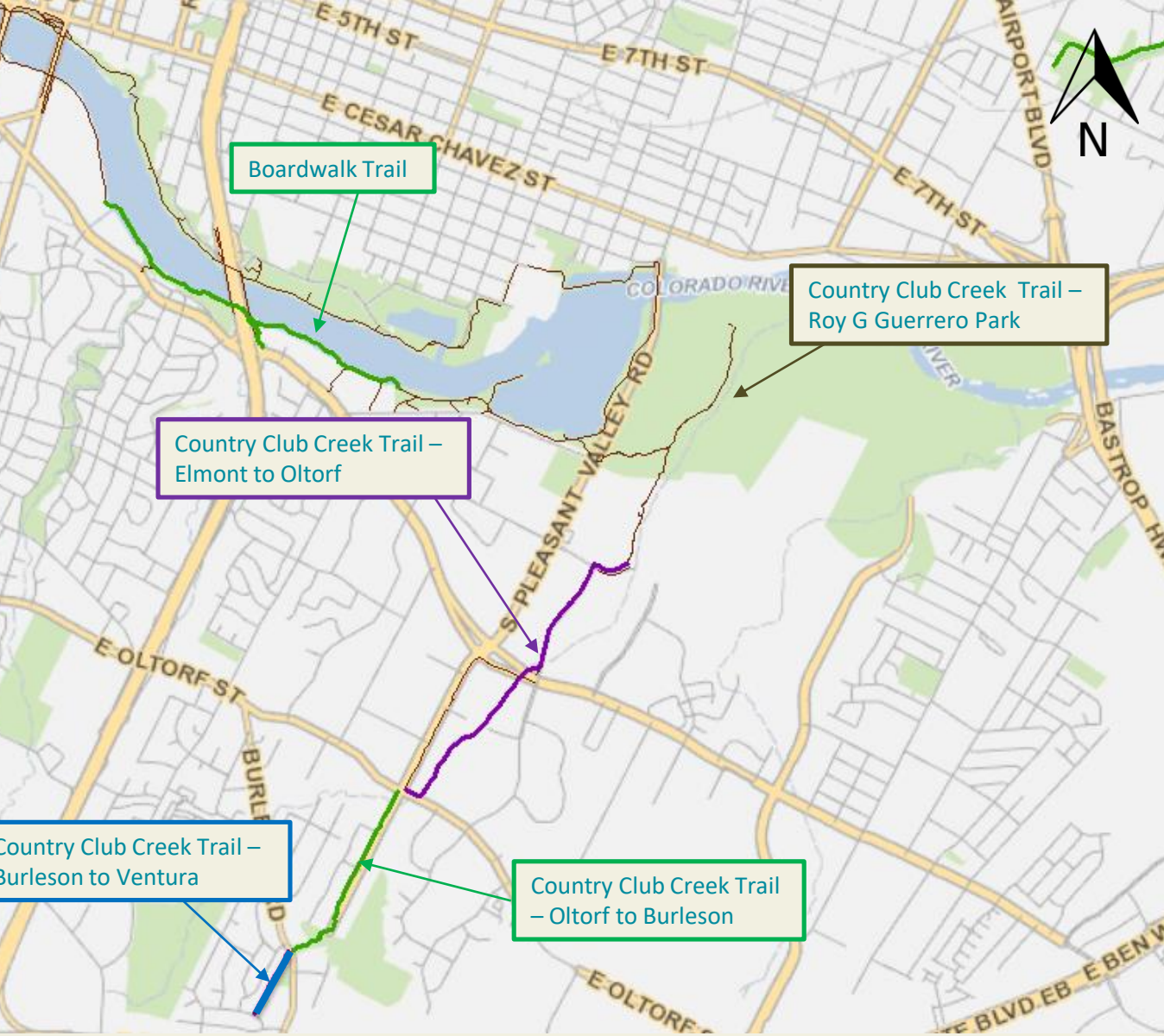


- **Dec. 3, 2018 - Pedestrian Advisory Council**
- **Dec.11, 2018– Urban Transportation Commission**
- **Dec. 18, 2018 – Bicycle Advisory Council**
- **Feb. 28, 2019 – Mobility Committee**
- **April 3, 2019 – Environmental Commission**



# Country Club Creek Trail

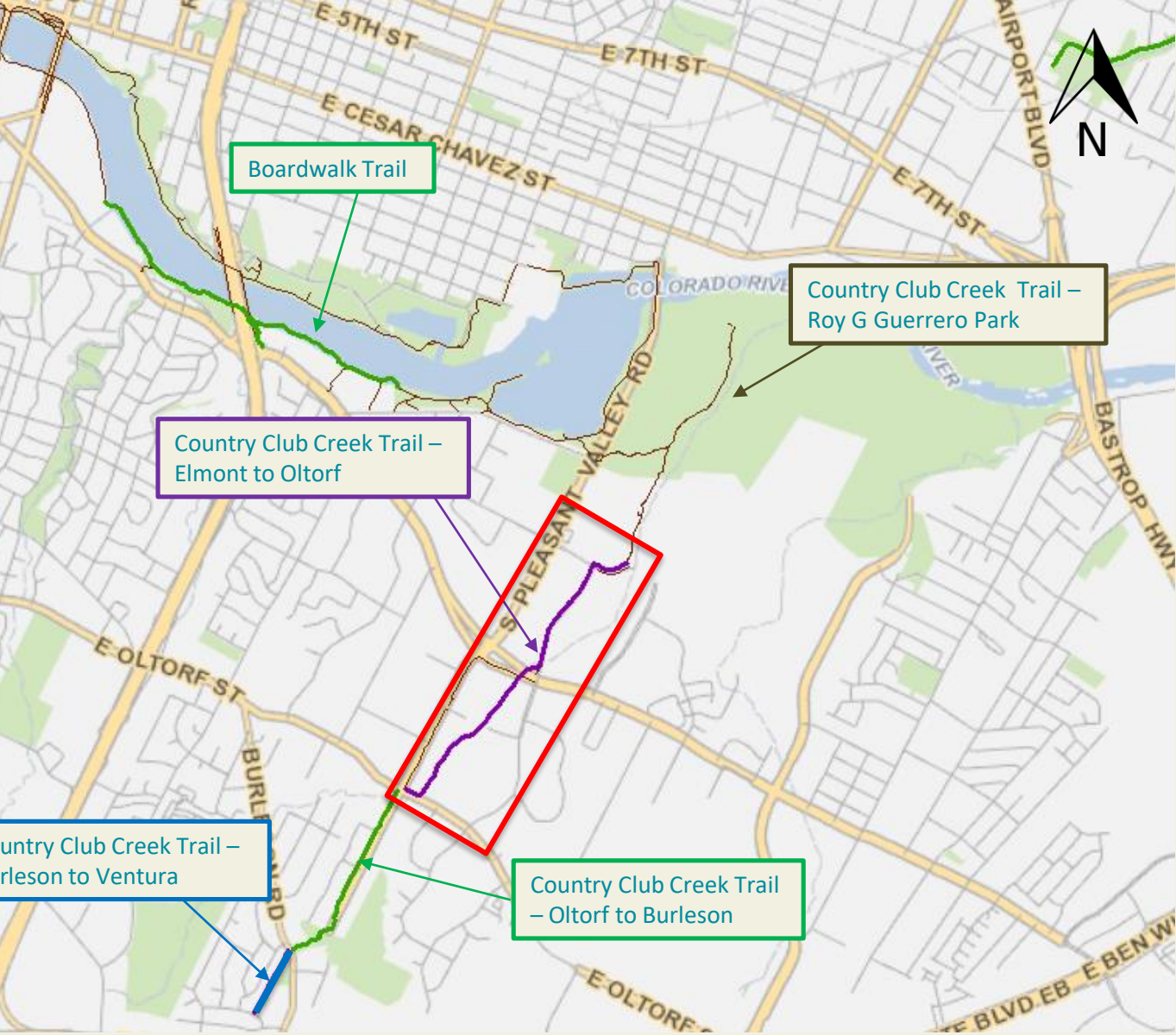
Elmont Dr – E Oltorf St





# Country Club Creek Trail

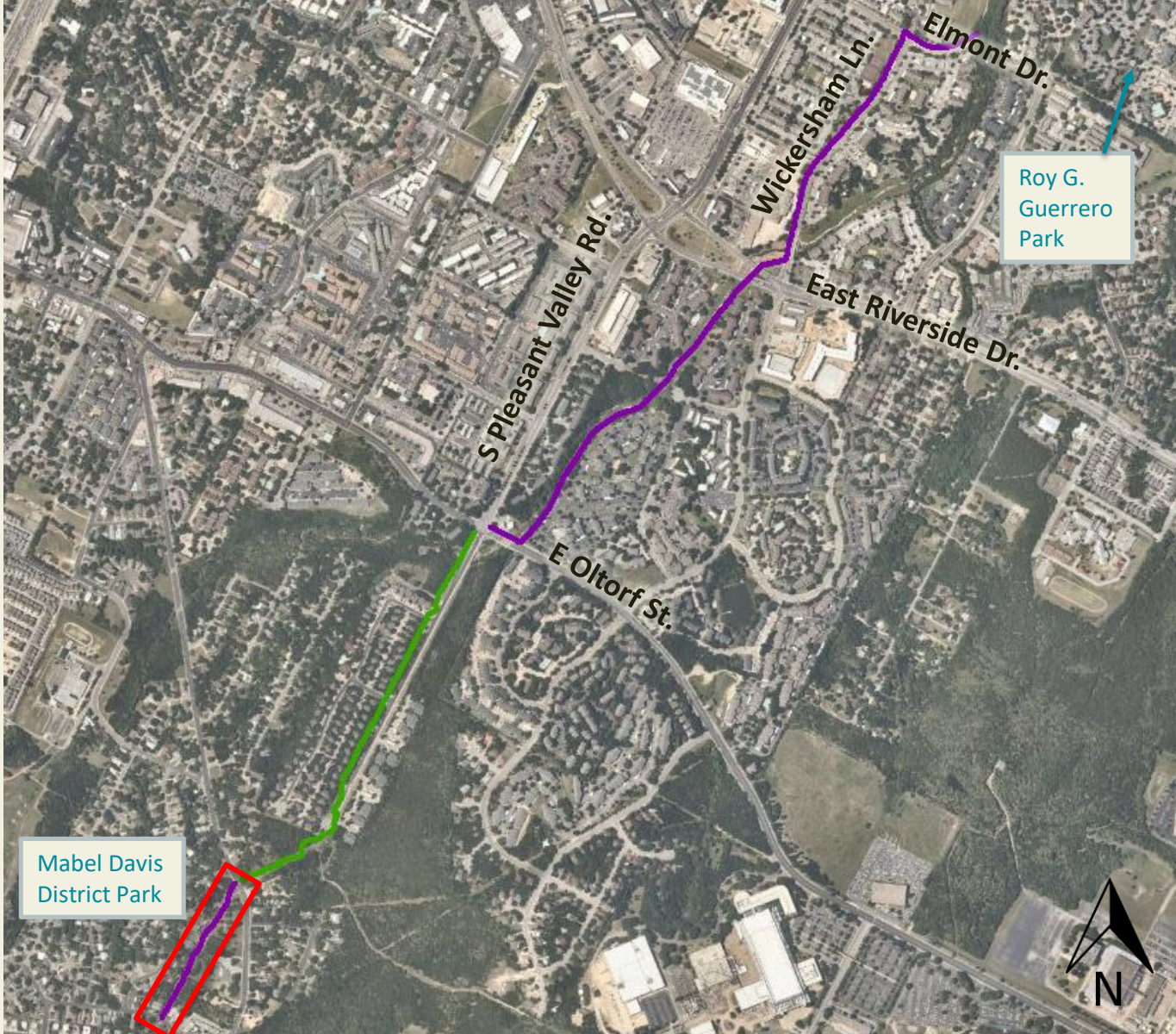
Elmont Dr – E Oltorf St





# Country Club Creek Trail

Elmont Dr – E Oltorf St – Burleson



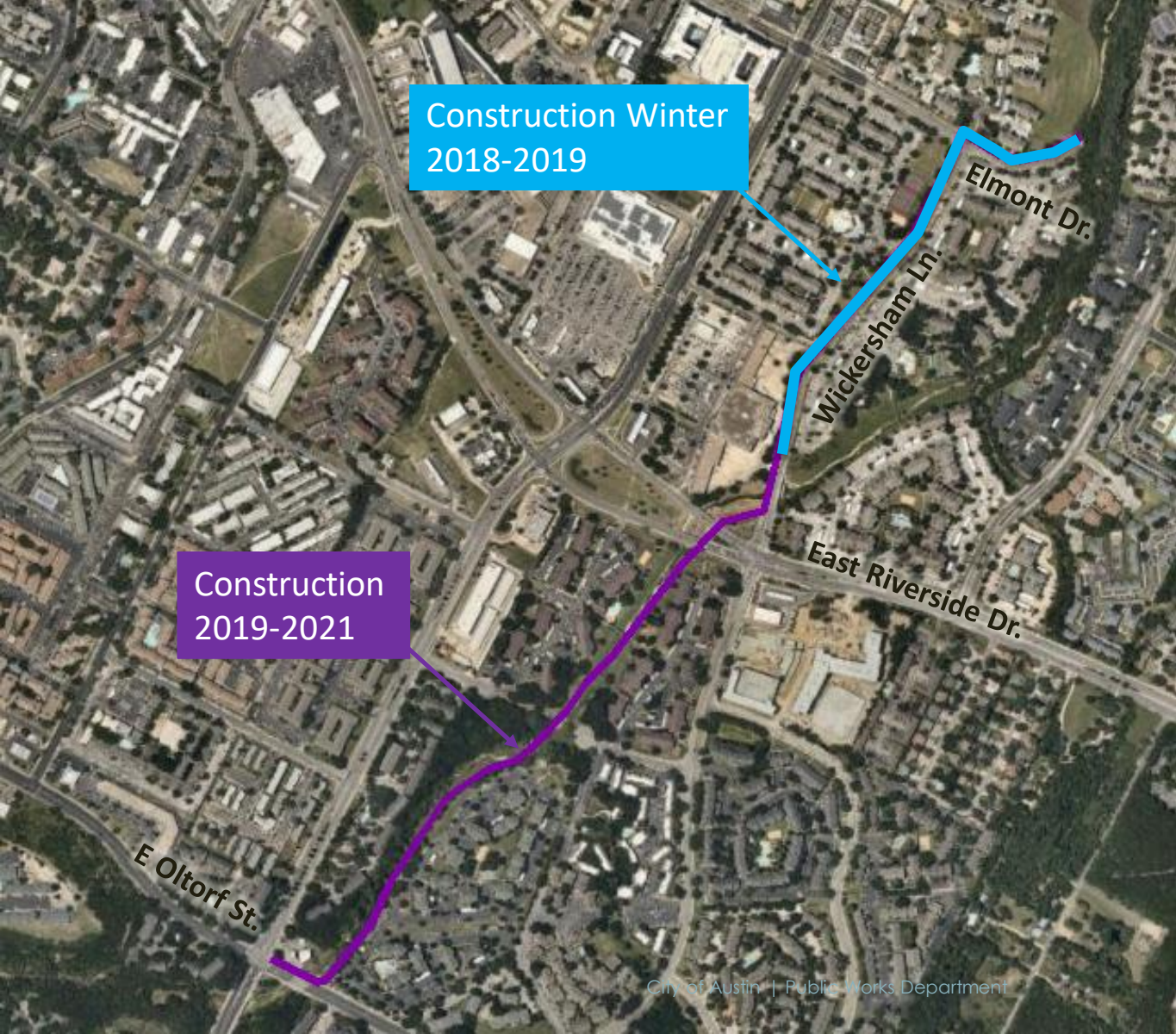
Mabel Davis  
District Park

Roy G.  
Guerrero  
Park



# Country Club Creek Trail

Elmont Dr – E Oltorf St



Construction Winter  
2018-2019

Construction  
2019-2021

# Country Club Creek Trail – Elmont Dr to E Oltorf St



## Project Scope

- 12 ft. wide concrete trail
- Approximately 1 mile
- Lighting will be included

## Project Funding

- \$6.25M total cost
  - \$6.25M - 2016 Bond – Design & Construction

**Status** – 60% Design (E Riverside to E Oltorf section)

**Tentative Construction Timeframe-** Winter 2020 – Spring 2022



# Public Outreach



- 2 Public Meetings held in PER phase
- Completed outreach regarding removal of parking on Wickersham Lane
- 1 Public Meeting for 60% design status report – April 2019
- 1 Pre-Construction Meeting
- Landowner engagement
- Urban Trails website
  - <http://austintexas.gov/CountryClubCreekTrail>
- Capital Project Explorer Updates
- Mobility Annual Plan

# Environmental Impacts & Mitigation

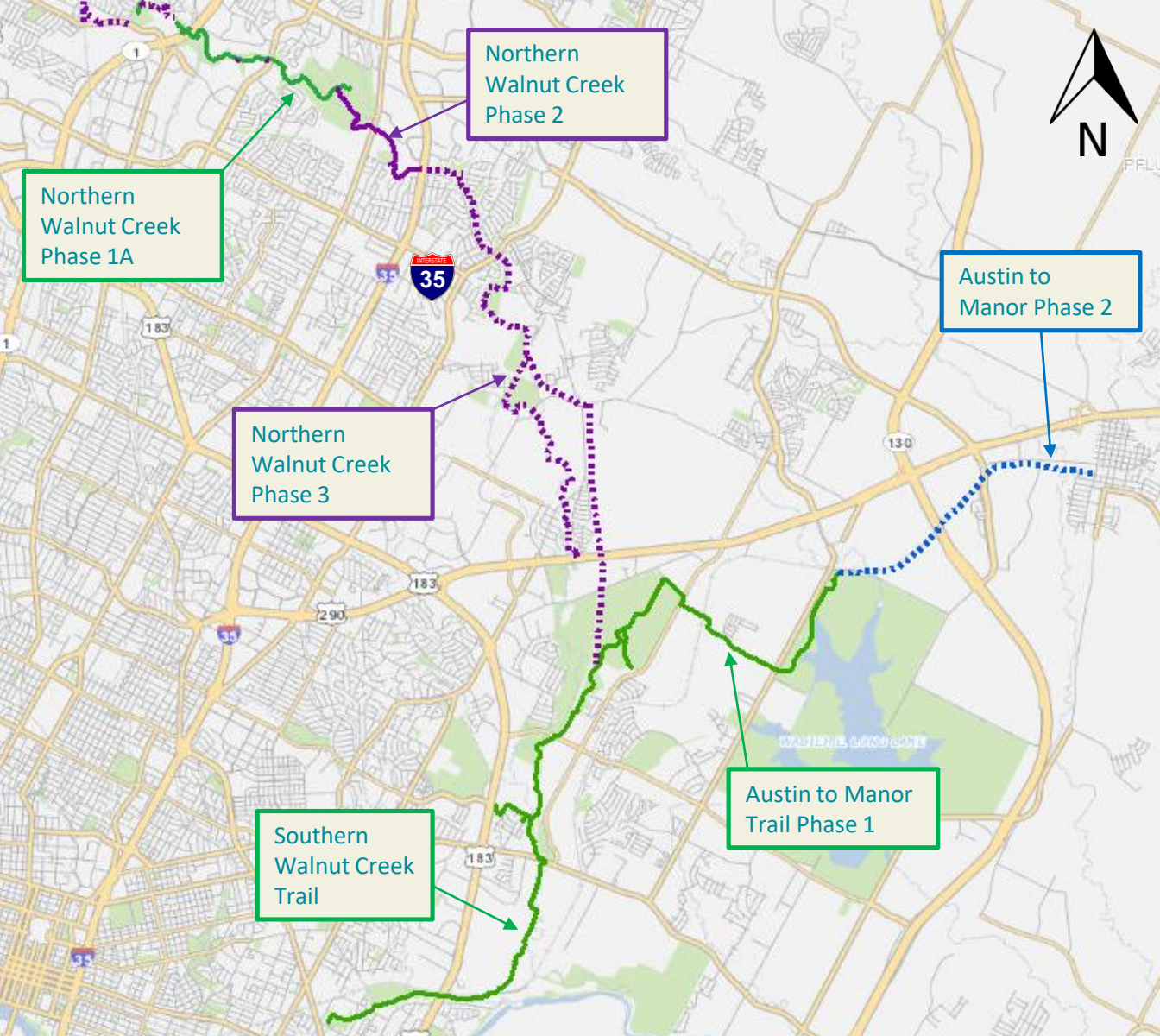


## Variances

- Administrative variance for trail in inner half of CWQZ  
LDC 25-8-42

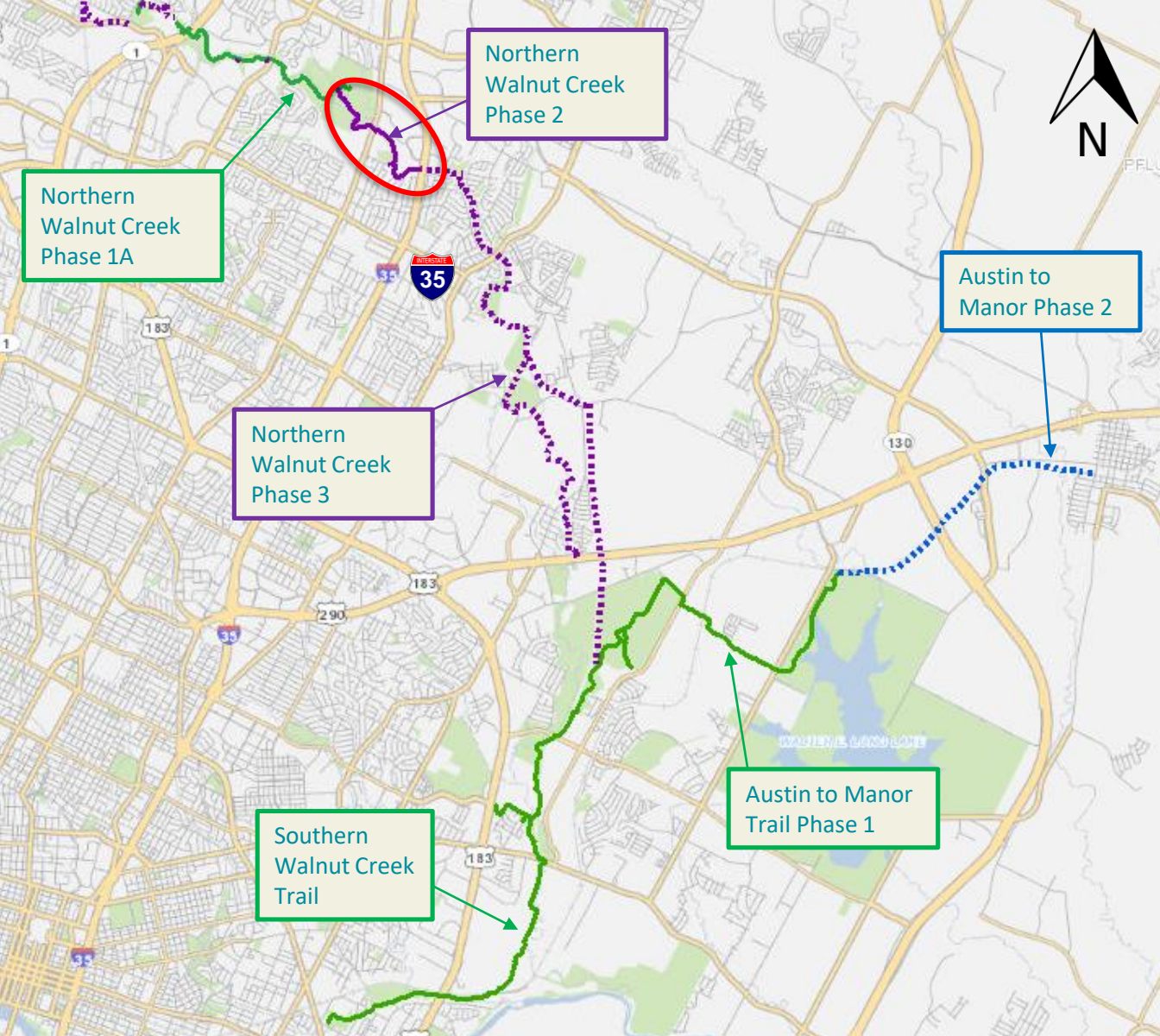
## Impacts

- Tree removal and replacement
  - 72 trees to be removed
    - No heritage trees
    - 3 “protected” trees
  - 336” total caliper inches of replacement
- Erosion hazard zone mitigation will be required
- Floodplain – no adverse impacts to existing buildings or roadways



## Northern Walnut Creek Trail Ph 2

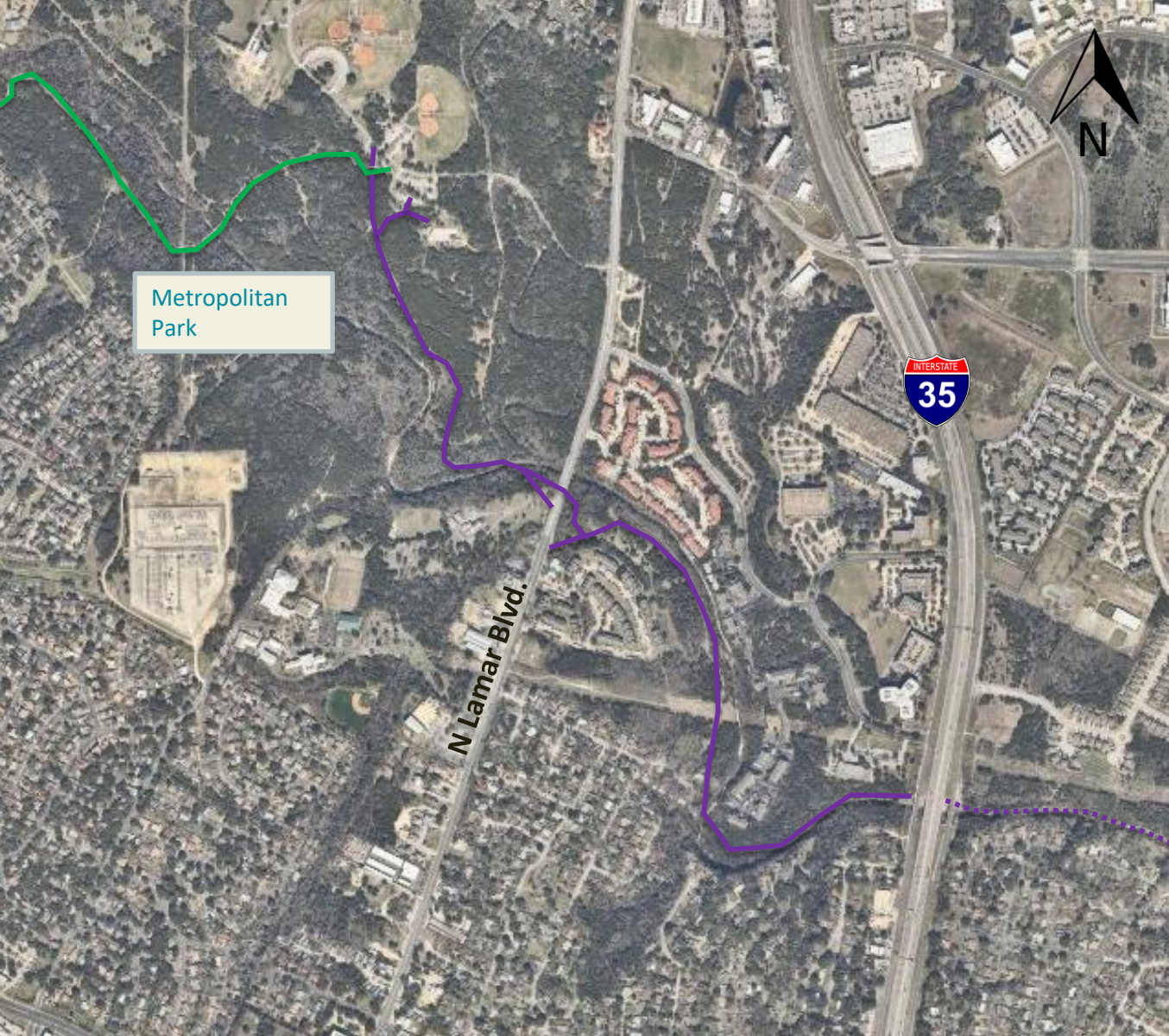
Walnut Creek  
Metropolitan Park –  
IH-35



## Northern Walnut Creek Trail Ph 2

Walnut Creek  
Metropolitan Park –  
IH-35





## Northern Walnut Creek Trail Ph 2

---

Walnut Creek  
Metropolitan Park –  
IH-35

# Northern Walnut Creek Trail Ph 2

## –Walnut Creek Park to IH-35



### Project Scope

- 12 ft. wide concrete trail
- 1.67 miles

### Project Funding–

- \$6.74M total cost
  - \$86,000 PARD 2006 P3 -Design
  - \$930,000 PARD – Park Dedication - Design
  - \$2.5M – 2016 Bond – Design & Construction
  - \$1.5M – TxDOT Grant – Construction
  - \$1.72M - TBD

**Status** – 60% Design submitted and reviewed

**Tentative Construction Timeframe-** Fall 2020- Fall 2022

# Northern Walnut Creek Trail Ph 2

## –Walnut Creek Park to IH-35



### Public Outreach

- Jan. 2014: Information Meeting- Little Walnut Creek Library
- April 2017: Public Meeting – Walnut Creek Elementary
- Late 2019: Public Meeting for 60% design status report
- Outreach through implementation of Southern Walnut Creek, Northern Walnut Creek Ph 1, and Walnut Creek Ph 3 meetings.
- Urban Trails website
  - <https://austintexas.gov/page/walnut-creek-trail-system>
- Capital Project Explorer Updates
- Mobility Annual Plan

# Environmental Impacts & Mitigation



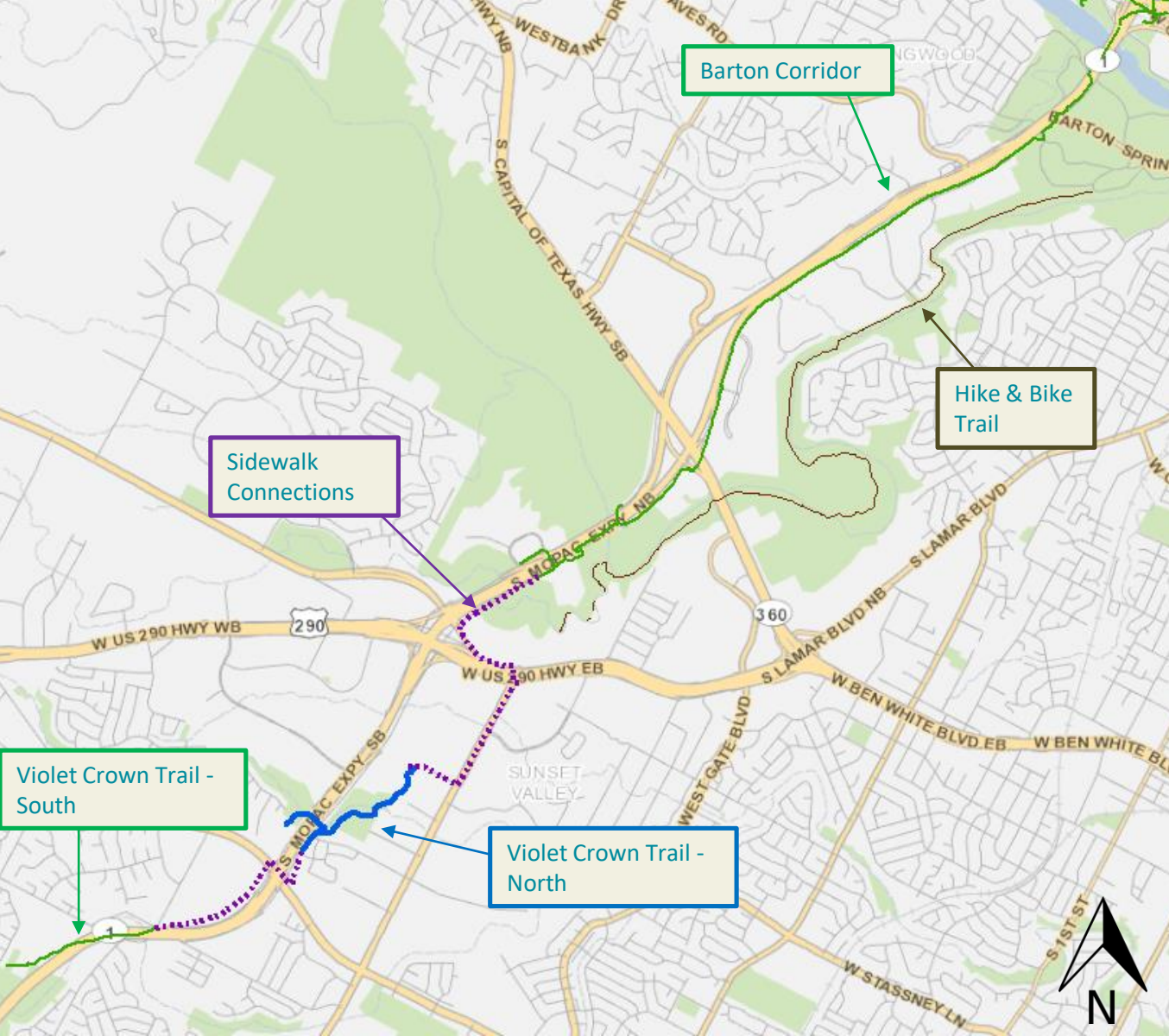
## Variances

- Administrative
  - Critical Environmental Features – rim rock  
LDC 25-8-281
  - Trail within inner half of Critical Water Quality Zone  
LDC 25-8-42

## Impacts

- Erosion hazard zone mitigation will be required
- Floodplain – Minor impacts to floodplain
- Mitigating tree removal by using alignment of existing nature trail



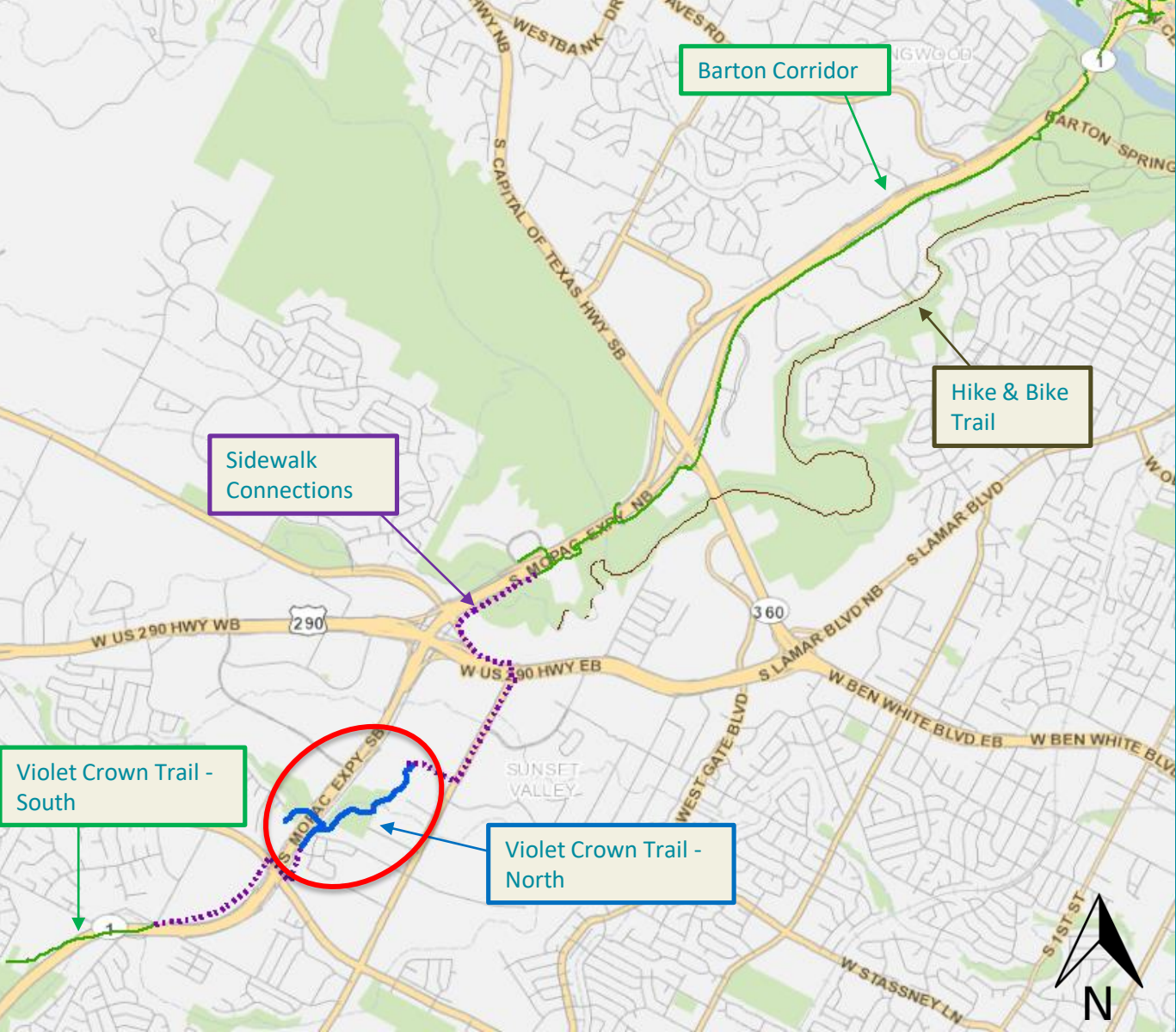


## Violet Crown Trail - North

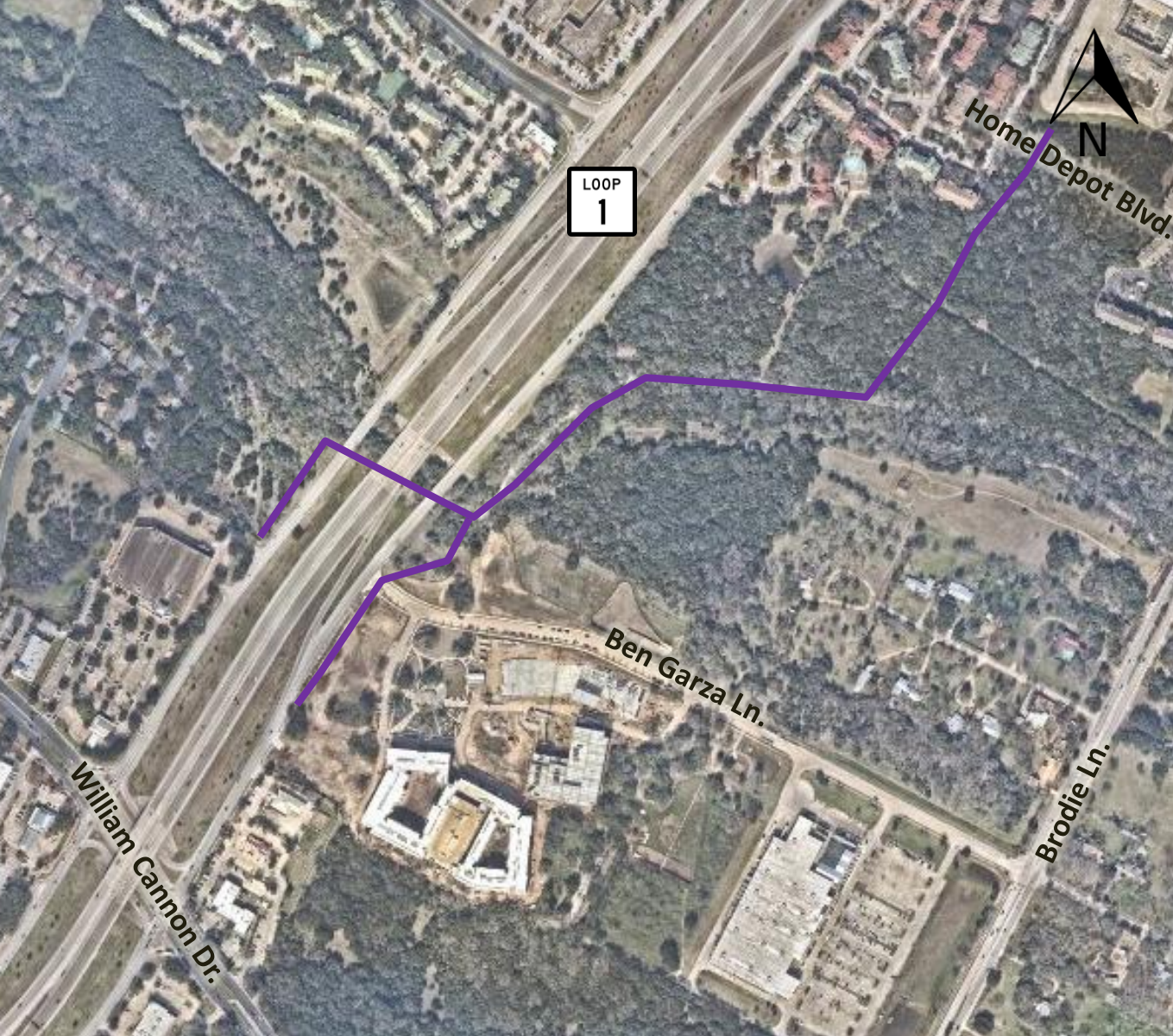
Home Depot Blvd –  
MoPac Expressway &  
William Cannon Dr

# Violet Crown Trail - North

Home Depot Blvd –  
MoPac Expressway &  
William Cannon Dr







# Violet Crown Trail - North

---

Home Depot Blvd –  
MoPac Expressway &  
William Cannon Dr

# Violet Crown Trail North – William Cannon to Home Depot Blvd



## Project Scope

- 10-11ft. wide Concrete & Stalok
- 1 mile

## Project Funding

- \$2.7M total cost
  - \$550,000 - 2012 Bond – Design
  - \$1,000,000 - 2016 Bond – Design & Construction
  - \$1,200,000 - CAMPO – Construction

**Status – 90% Design**

**Tentative Construction Timeframe- Spring 2020 – Fall 2021**



# Violet Crown Trail North – William Cannon to Home Depot Blvd



## Public Outreach

- July 2014: Public Meeting – Hampton Public Library
  - *Community feedback led to change in trail alignment*
- Jan. 2015: Public Meeting – Hampton Public Library
- Feb. 2015: Neighborhood Walkabout Meeting
- Sept. 2017: VCT South meeting- Hampton Public Library
- Late 2019: Next public meeting
- Close coordination and engagement from Hill Country Conservancy
- Urban Trails website
  - <http://austintexas.gov/violetcrowntrail>
- Capital Project Explorer Updates
- Mobility Annual Plan

# Environmental Impacts & Mitigation



## Variances

- Administrative variance granted for Critical Environmental Features
    - Sink
- LDC 25-8-281(C)(3)

## Impacts

- Tree removal
  - 60 trees planted in Austin and 48 planted in Sunset Valley as mitigation
- Floodplain – no adverse impacts to downstream buildings or roadways

# All Current Projects



| Project   | Status                        |
|---|-------------------------------|
| Austin to Manor – Phase 2*                            | 60% Design                    |
| Bergstrom Spur Study                                  | Planning                      |
| <b>Country Club Creek Trail – Burleson to Ventura</b> | <b>Substantially Complete</b> |
| Country Club Creek Trail – Elmont to Oltorf           | 60% Design                    |
| La Loma Trail   | 100% PER                      |
| <b>Northern Walnut Creek Trail – Phase 1A</b>         | <b>Substantially Complete</b> |
| Northern Walnut Creek Trail – Phase 2                 | 60% Design                    |
| Northern Walnut Creek Trail – Phase 3                 | 60% PER                       |
| Red Line Trail – Braker to Walnut Creek*              | 90% PER                       |
| Southern Walnut Creek Renovation                      | 90% Design                    |
| <b>Upper Boggy Creek – Red Line Trail</b>             | <b>80% Construction</b>       |
| Violet Crown Trail – North                            | 90% Design                    |
| YBC Trail*  | 10% Design                    |





CITY OF AUSTIN  
PUBLIC WORKS DEPARTMENT  
CONNECTING YOU ALL AROUND AUSTIN

---

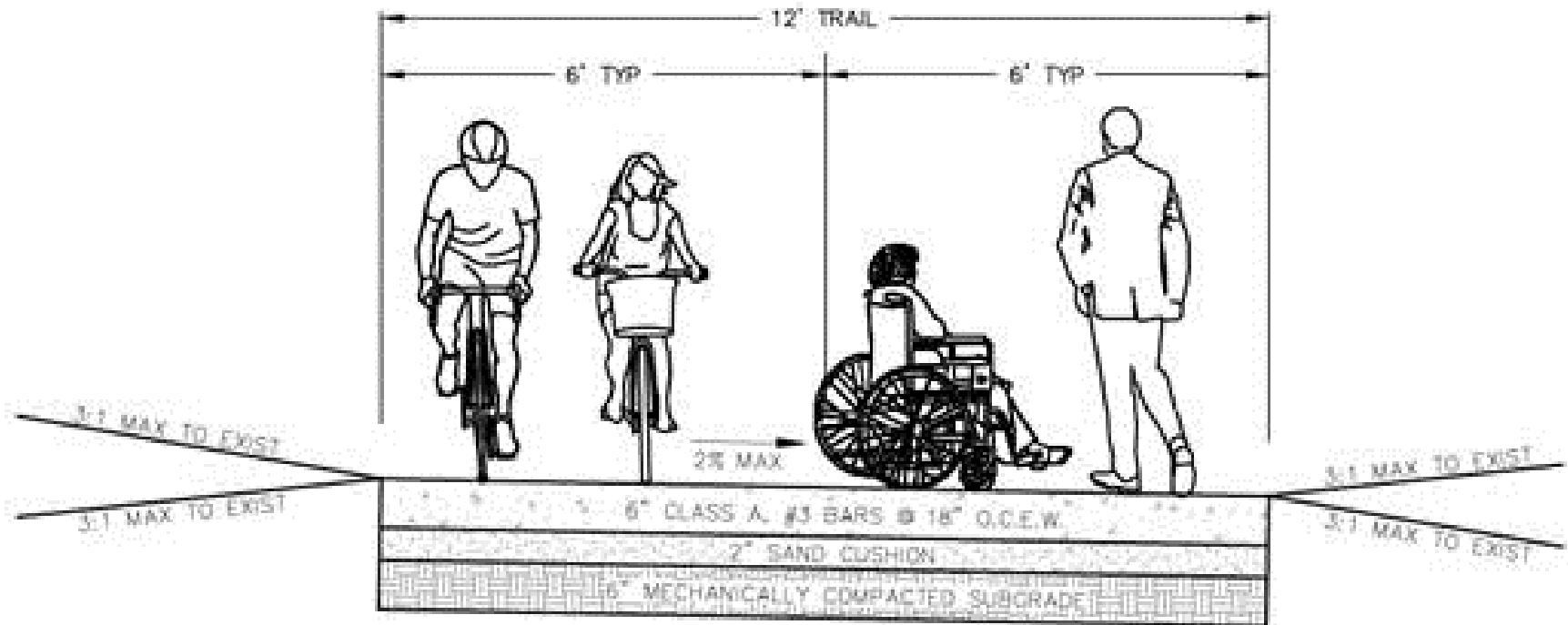
## Questions?

---

Ana Seivert  
Urban Trails Project Coordinator  
[Ana.Seivert@austintexas.gov](mailto:Ana.Seivert@austintexas.gov)  
512.974.2858



# Typical Trail Details



TRAIL TYPICAL SECTION – SEGMENT 1

N.T.S.