



## Planning Unit

<b>Data provided by:</b>	Austin Police Department: Planning Unit
<b>Date delivered:</b>	1/23/2019
<b>Requested by:</b>	Mike Levy
<b>Compiled by:</b>	Sean Reyna
<b>Data requested:</b>	The number of traffic fatalities recorded from 2013-2018
<b>Sources used:</b>	APD Traffic Fatality Database

### AUSTIN POLICE DEPARTMENT DATA DISCLAIMER

1. The data provided are for informational use only and may differ from official APD crime data.
2. APD's crime database is continuously updated, so reports run at different times may produce different results. Care should be taken when comparing against other reports as different data collection methods and different data sources may have been used.
3. The Austin Police Department does not assume any liability for any decision made or action taken or not taken by the recipient in reliance upon any information or data provided.

Year	Traffic Fatality Count
2013	72
2014	56
2015	102
2016	79
2017	76
2018	74



# Pedestrian deaths at record high

## 2/18/19 Austin American-Statesman

Pedestrians made up 42 percent of all traffic deaths in Austin last year — the largest proportion in recent years, according to available police data — and more pedestrians died on Interstate 35 than on any other road in the city, an American-Statesman analysis found.

In 2018, the city saw 74 traffic deaths, including 31 pedestrians hit and killed by vehicles, making it the deadliest year for pedestrians since 2008, the earliest year of data police provided the Statesman. The rate is the highest since 2011, when pedestrians made up 41 percent of 54 total traffic deaths. In 2017, pedestrians made up about 30 percent of 76 deaths.

Fifteen of the pedestrian deaths happened on major highways, including 11 on I-35 or one of its service roads, the data show. Four of the crashes involved an 18-wheeler.

Road deaths persist despite the city's efforts to improve traffic safety through its Vision Zero action plan adopted more than two years ago.

Two pedestrians have already been killed this year in Austin. David Hillburn Sell, 31, was hit and killed by an 18-wheeler the morning of Jan. 15. The truck's driver said he could not see Sell walking in the center southbound lane of I-35 in North Austin. A little after midnight on Jan. 26, Laura Wray was fatally struck by a pickup as she was walking along North I-35 near Middle Fiskville Road.

Pedestrian deaths steadily dropped from 29 in 2015, then 28 in 2016, and 23 in 2017, police data show. But what caused the small spike in pedestrian deaths in 2018 hasn't been determined, officials with Austin's Transportation Department said.

"It's hard to pin that on one thing," said the city's pedestrian coordinator, Joel Meyer. "There can be year-to-year fluctuations that are really hard to pin down."

Typically, pedestrian deaths can involve drunken driving, drivers failing to yield to walkers, speeding, distracted driving and people walking where they're not supposed to, he said.

"We try to take some more long-term approach in our data evaluation to understand how these trends are going up or down," he said. "The likely increase last year is certainly something we're paying attention to."

Speed is a factor in pedestrian deaths. Of the 121 people who were killed on Austin roads between 2010 and 2015, 64 percent of them were struck by vehicles on roads with speed limits of 45 mph or more, according to the city's pedestrian safety action plan for 2018.

A driver who is going 50 mph can cause more damage than someone only going 20 mph, Meyer said.

Three pedestrians were killed in one week last July, and the incidents highlight the number of ways a person could be fatally struck by a vehicle in Austin.

- Scott Gerald Whiting, 37, did not have a sidewalk to use when he was hit by a vehicle in the 5700 block of Parmer Lane on the morning of July 23. Police do not know if he was using a bike lane or was walking on a grassy shoulder when he was hit.

- On the morning of July 26, Luis Cristobal Landeros, 50, was using a sidewalk in the westbound service road in the 1100 block of East Anderson Lane when a driver lost control of a 2018 black Mitsubishi Mirage and hit Landeros.

- David O'Beirne was trying to cross the 500 block of North Interstate 35 the morning of July 27 when he was hit by a 2007 Mack truck tractor.

One might think that stopping pedestrians from walking where they aren't supposed to and getting drivers to slow down would be a quick fix to the deadly issue, but Meyer said it is more complex than that.

Changing the culture of how drivers treat pedestrians — by employing informational street teams, updating traffic stops, and building more sidewalks and crosswalks — is part of the equation when it comes to eradicating these kinds of incidents, he said: "If you go to other cities, particularly in the North or Northeast, culturally, it's the norm to stop for pedestrians when they're about to cross the street. I don't know that we are there yet in Austin."

More money is being put toward ridding the city of traffic deaths, pedestrian or otherwise. Proposition G was passed in November and will funnel \$160 million toward improving and building intersections, streets and sidewalks and upgrading signals.

"That's a resource that we're going to be using in the next couple of years to really focus on high crash and high-risk areas where we can do low-cost, but high-impact crossings across the city," Meyer said.

While 2018 brought an increase in pedestrian deaths, the number of total traffic deaths that Austin sees in a year has only incrementally decreased since the city adopted the Vision Zero action plan in 2016.

Total traffic deaths dropped from 102 in 2015 to 79 in 2016, then from 76 in 2017 to 74 in 2018, police data show.

Vision Zero aims to eliminate all traffic deaths in Austin by 2025 by focusing on distracted driving, speeding, alcohol and drug impairment, unsafe driving maneuvers, and failure to stop or field right of way.

"It's an audacious goal to be sure," Lauren Dierenfield, Austin Transportation Department's active transportation program manager, told the American-Statesman in December. "But, if you think about your family and loved ones and think about how many people it would be acceptable to die in your family, we think zero. When you extrapolate that into the Austin community, that's really the vision in Vision Zero."

## Michael Levy

---

**Sent:** Friday, February 22, 2019 3:44 PM  
**Subject:** The following is a summary of funding for the Vision Zero Program for efforts that were explicitly branded Vision Zero. Additional funding allocated to actions in the Vision Zero Action Plan, such as Action 50 for Transportation Demand Management or Action 25 pursuit of grant funding for Emergency Vehicle Preemption Technology, is not included in this summary per the clarification provided in a follow up phone call with the requestor.  
**Importance:** High

The following is a summary of funding for the Vision Zero Program for efforts that were explicitly branded Vision Zero. Additional funding allocated to actions in the Vision Zero Action Plan, such as Action 50 for Transportation Demand Management or Action 25 pursuit of grant funding for Emergency Vehicle Preemption Technology, is not included in this summary per the clarification provided in a follow up phone call with the requestor.

### **Vision Zero Staffing**

*While many staff regularly contribute to safety-related projects, below is the breakdown of staff time that was identified as directly connected to Vision Zero.*

- FY2016 - \$19,411 (ATD) and \$22,345 (Planning and Zoning)
- FY2017 - \$145,989
- FY2018 - \$112,340
- FY2019 - \$13,335 (spent to date)

### **Vision Zero In Action Enforcement**

*Vision Zero in Action enforcement program pays Austin Police Department officers overtime to patrol throughout the City, with a focus on key dangerous behaviors such as speeding.*

- FY2016 – \$0
- FY2017 – \$307,589
- FY2018 - \$427,771
- FY2019 – \$163,228 (spent to date)

### **Vision Zero Education Campaign**

*The Vision Zero educational campaign includes expenditures on radio, print, television, digital advertising and streaming audio as well as expenditures for community outreach efforts conducted at special events, schools, community centers and other locations.*

- FY2016 – \$0
- FY2017 – \$84,079 spent including \$44,550 in radio, TV, print and digital ads and \$39,529 in educational outreach materials such as lights, brochures, retroreflective arm bands and yard signs.
- FY2018 - \$74,328 spent including \$58,039 in radio, TV, print and digital ads and \$16,288 in outreach materials as well as expenses for a Vision Zero education summit held April 20th, 2018.
- FY2019 – \$22,475.58 (spent to date) on radio, TV, print and digital ads.

## **Vision Zero Intersection Safety Improvements Program**

*The Vision Zero Intersection      Amount*

*Safety Program focuses on major intersections for which there is an engineering solution to documented crash patterns. This work started with the Top 5 Crash intersections identified in FY2016 and continues with ongoing work made possible through the 2016 Bond.*

*Dollar amounts are provided per project as allocations and spending plans varied per year. Top 5 Intersection*

Cameron Rd_Anderson Lane	\$149,517
IH 35_MLK	\$711,654
Lamar_Parmer	\$705,501
Lamar_Rundberg	\$306,195
Slaughter_Manchaca	\$1,432,303
<b>Total Top 5</b>	<b>\$3,305,170</b>

**2016 Mobility Bond (MB)      Amount**

**Projects: Intersection Safety**

Pleasant Valley_Elmont	\$1,744,297
Slaughter_South1st	\$445,437
SouthCongress_Oltorf	\$1,016,616
Slaughter_Cullen	\$169,240
IH35_Braker	\$147,953
45th_RedRiver	\$44,936
Oltorf_Parker	\$3,013
Bond Issuance Costs	\$10,763
<b>Total 2016 MB</b>	<b>\$3,582,255</b>

# These Are The Cities With The Most Aggressive Drivers

By [GasBuddy](#) | March 12, 2019

*Los Angeles, Philadelphia and Sacramento 21% more aggressive than the average driver in the US, topping the list of US cities with most gas-guzzling drivers on the road*

Honking, squeaking brakes and bumper-to-bumper traffic are common problems in many of America's congested cities. Frustrated drivers can get agitated quickly, and their aggressive driving habits like speeding, rapid acceleration and braking can lower gas mileage by as much as 40 percent, costing them as much as \$477 per year in additional fuel consumption. Today we're revealing the major metropolitan areas in the United States with the most aggressive drivers, causing them to pay more for gasoline by making more frequent trips to the pump.

We compiled data from our [Drives feature](#) in the GasBuddy app, examining the top 30 metropolitan areas by population as defined by the United States Census Bureau from Nov. 2018 – Feb. 2019, noting the frequency of an aggressive event while driving, whether it be speeding, hard braking or accelerating.

## TOP 10 CITIES WITH THE MOST AGGRESSIVE DRIVERS

Los Angeles  
Philadelphia  
Sacramento, Calif.  
Atlanta  
San Francisco  
San Diego  
Orlando, Fla.  
Detroit  
✖✖✖ Austin, Texas  
Las Vegas

Los Angeles consistently tops the list of having some of the most expensive gas prices in the nation, currently averaging \$3.35 per gallon. Combined with traffic and congestion, the GasBuddy Aggressive Driving study reveals that the way Los Angeles motorists are driving is also contributing to a larger gasoline budget. And it doesn't stop with Los Angeles: four of the top 10 cities with the most aggressive drivers are in California, including Sacramento, San Francisco and San Diego.

"Frustration while driving in densely populated cities with high levels of congestion leads motorists to drive more aggressively and with more urgency. Interestingly, these are areas that typically see some of the highest gas prices in their respective states," said Patrick DeHaan, head

of petroleum analysis at GasBuddy. “With drivers in Los Angeles, Philadelphia, Sacramento and Atlanta being 20 percent more aggressive than the average driver in America, it’s particularly important for commuters and rideshare drivers in these areas to work on shedding their lead foot and relax more to keep money from flying out the window each time they hit the road.”

Last year our [Aggressive Driving Study](#) examined the states with the most aggressive drivers. Seven of the top 10 cities with the most aggressive drivers from this year’s study are within the top 10 states with the most aggressive drivers, including California, Georgia, Texas and Florida.

**Additional findings include:**

- **Frustrating Fridays:** Motorists are 1.2x more likely to encounter aggressive driving on Friday than on Wednesday. The most aggressive day on the road is Friday, with 14% more aggressive driving events occurring compared to the average across the United States. The least aggressive day on the road is Wednesday, with 6% fewer aggressive driving events occurring compared to the average across the United States.
- **Wearing Out the Brakes (All Week):** The most frequent aggressive driving habit on weekdays is hard braking, followed by rapid acceleration and speeding. On weekends, the most frequent aggressive driving habit continues to be hard braking, followed by speeding and rapid acceleration.
- **San Diego’s Need for Speed:** While cities like Los Angeles and Philadelphia take the top spots in regards to hard braking and rapid acceleration, San Diego, Orlando and Detroit take the top 3 spots for cities with the most speeding incidents.

Complete city rankings can be [found here](#).

**Methodology**

The findings were compiled using data from our [Drives feature](#) in the GasBuddy app that offers drivers an assessment of their driving habits during their trip in an effort to improve fuel efficiency, mapping out when and where a poor driving habit occurred.

We examined Drives in the top 30 metropolitan areas by population as defined by the United States Census Bureau from Nov. 2018 – Feb. 2019, noting the frequency of an aggressive event while driving, whether it be speeding, hard braking or accelerating. The aggressive driving percentage within the report compares the average number of aggressive driving events per trip for drivers in a particular metropolitan area to the average number of aggressive driving events per trip for the average American driver.



From: [HPWBANA@yahoogroups.com](mailto:HPWBANA@yahoogroups.com) <[HPWBANA@yahoogroups.com](mailto:HPWBANA@yahoogroups.com)>  
Sent: Wednesday, November 7, 2018 3:16 PM  
To: HPWBANA List Serve <[HPWBANA@yahoogroups.com](mailto:HPWBANA@yahoogroups.com)>  
Subject: [HPWBANA] Constable Report Through November 9, 2018 [1 Attachment]

[Attachment(s)] from Pieter Sybesma included below

HPWBANA Neighbors:

An updated Supplemental Constable report from the start of 2018 is attached. **Please note that to date for 2018, 73% (432 out of 591) of the traffic stops by the Constable were of drivers who do not live in the Highland Park West Balcones Area. Neighborhood residents have slowed down but the other traffic has not.**

**Now is the time for other residents who support an increased law enforcement presence in the neighborhood to join in funding this effort. Traffic enforcement is a key element for safety in the neighborhood. The cost of this effort is \$60/hour for Constable patrol/enforcement time. Increased law enforcement presence should help deter vandalism, burglaries, and auto break-ins. Please consider making a donation for 1, 2, 5, or more hours of patrol time. To contribute to this effort, you may donate through <http://hpwbana.org/get-involved/join-hpwbana>, you can include a donation with your annual dues payment, or you may contact me at [psybesma@austin.rr.com](mailto:psybesma@austin.rr.com).**

The supplemental patrol and traffic safety efforts were initiated in early 2015 by concerned neighbors who wanted to take a more proactive stance. With the expansion of the geographic area of responsibility of our APD District Representative in 2016, little neighborhood patrolling can be accomplished by APD since officers are generally going from call-to-call. It is unfortunate that the City does not provide enough support to allow neighborhood police patrolling on any regular or consistent basis. To address the patrol need and speeding issues on our streets and around the school, several residents have voluntarily funded supplemental patrolling and enforcement of speed limits within the neighborhood by a Constable.

Emphasis is placed on traffic enforcement on Perry Lane, Hancock Drive (from Bull Creek Road to Balcones), Balcones Drive (from 35<sup>th</sup> Street to RM 2222), and on neighborhood patrolling.

Unfortunately, APD resources are directed where there is the most need to preserve life and property, and speeding and patrolling suffer. We live in a low crime area. There are not enough patrol officers for APD. The ones who are here are going from call to call with very little time for patrolling. At a 2015 APD Commander's Forum for our area, the question was asked about on-duty Directed Patrols. The Commander supported them, when there is time, but if there is an emergency in the area, the Directed Patrol officer would be expected (and may be dispatched) to respond to the emergency. At subsequent Commander's Forum meetings, the answer has remained the same. And since the worst speeding times that have been communicated to the HPWBANA Board coincide with the morning and afternoon rush-hours, our experience of the availability of on-duty APD patrolling has been disappointing. If a citation is issued by a Constable, payment is made to the Justice of the Peace Court and goes into the County revenue. If the citation is issued by an APD Officer, payment is made to Austin Municipal Court and goes into City revenue. No revenue comes back to the neighborhood.



Thank you for your continued support. Please encourage your friends and neighbors to also support this effort. The current HPWBANA Board supports this initiative and approved \$2,000 funding in the 2018 budget.

What else can you do?

1. Be aware of the speed limits and observe them.
2. Help with funding patrols by the Constable. The cost of the patrol effort is \$60/hour. To contribute to this effort, please contact me at : [psybesma@austin.rr.com](mailto:psybesma@austin.rr.com)
3. Purchase a "Drive Like Your Kids Live Here"® yard sign for your yard. The yard signs are available at Lowe's for less than \$7.00 each or on-line for \$12.99 each at [http://drivelikeyourkidslivehere.com/our\\_store/17/yard-sign](http://drivelikeyourkidslivehere.com/our_store/17/yard-sign)
4. And, become a member of HPWBANA, your Neighborhood Association at <http://hpwbana.org/>.

Be Safe!

Pieter Sybesma

HPWBANA Board

From: [HPWBANA@yahoogroups.com](mailto:HPWBANA@yahoogroups.com) <[HPWBANA@yahoogroups.com](mailto:HPWBANA@yahoogroups.com)>

Sent: Sunday, January 7, 2018 2:57 PM

To: HPWBANA List Serve <[HPWBANA@yahoogroups.com](mailto:HPWBANA@yahoogroups.com)>

Subject: [HPWBANA] 2017 Year End Constable Report

HPWBANA Neighbors:

It is unfortunate that the City does not provide enough support to allow neighborhood police patrolling on any regular or consistent basis. To address the patrol need and speeding issues on our streets and around the school, several residents have voluntarily funded supplemental patrolling and enforcement of speed limits within the neighborhood by a Constable beginning in 2015.

| x  
| x  
| x

Emphasis is placed on traffic enforcement on Perry Lane, Hancock Drive (from Bull Creek Road to Balcones), Balcones Drive (from 35<sup>th</sup> Street to RM 2222), and on neighborhood patrolling.

An updated supplemental enforcement report from the start of 2017 is attached. **Please note that for 2017, 74% (501 out of 681) of the traffic stops by the Constable were of drivers who do not live in the Highland Park West Balcones Area. For 2016, 66% (250 out of 378) and for 2015, 48 % (157 out of**



**328) of the traffic stops by the Constable were of drivers who did not live in the Highland Park West Balcones Area. Neighborhood residents have slowed down but the other traffic has not. Traffic enforcement is a key element for safety in the neighborhood.**

The cost of this effort is \$60/hour for Constable patrol/enforcement time. With the beginning of 2018, 20 hours of Constable Patrol time has been funded. Now is the time for other residents who support an increased law enforcement presence in the neighborhood to join in funding this. Increased law enforcement presence should help deter vandalism, burglaries, and auto break-ins. For 2017, the Constable has patrolled on 69 different occasions for 211.25 hours.

Please consider making a donation for 1, 2, 5, or more hours of patrol time. To contribute to this effort, you may donate through <http://hpwbana.org/get-involved/join-hpwbana>, you can include a donation with your annual dues payment, or you may contact me at [psybesma@austin.rr.com](mailto:psybesma@austin.rr.com).

Unfortunately, APD resources are directed where there is the most need to preserve life and property, and speeding and patrolling suffer. We live in a low crime area. There are not enough patrol officers for APD. The ones who are here are going from call to call with very little time for patrolling. At a 2015 APD Commander's Forum for our area, the question was asked about on-duty Directed Patrols. The Commander supported them, when there is time, but if there is an emergency in the area, the Directed Patrol officer would be expected (and may be dispatched) to respond to the emergency. At subsequent Commander's Forum meetings, the answer has remained the same. And since the worst speeding times that have been communicated to the HPWBANA Board coincide with the morning and afternoon rush-hours, our experience of the availability of on-duty APD patrolling has been disappointing.

Thank you for your continued support. Please encourage your friends and neighbors to also support this effort. The HPWBANA Board supports this initiative and approved \$1,600 funding in last year's 2017 budget.

What else can you do?

1. Be aware of the speed limits and observe them.
2. Help with funding patrols by the Constable. The cost of the patrol effort is \$60/hour. To contribute to this effort, please contact me at : [psybesma@austin.rr.com](mailto:psybesma@austin.rr.com)
3. Purchase a "Drive Like Your Kids Live Here"® yard sign for your yard. The yard signs are available on-line for \$12.98 each at [http://drivelikeyourkidslivehere.com/our\\_store/17/yard-sign](http://drivelikeyourkidslivehere.com/our_store/17/yard-sign)
4. And, become a member of HPWBANA, your Neighborhood Association at <http://hpwbana.org/>.

Be Safe!

Pieter Sybesma

HPWBANA Board



# Highland Park West Balcones Area Neighborhood 2018 Supplemental Traffic Enforcement Efforts Year End Report January 4 – December 28, 2018

Constable Random Patrol Times: 7:00 a.m. – 9:00 a.m. or 2:00 p.m. – 6:00 p.m. (Generally)  
Traffic Enforcement Areas: Balcones, Perry, and Hancock and smaller side streets or School Zone  
and both crosswalks, and Patrol throughout the neighborhood.

Moving Violations-- Running a stop sign, speeding, failing to yield right of way or unsafe lane  
change.

69 different patrols totaled 209.25 hours of patrol; 34 were morning patrols and 35 were afternoon patrols.

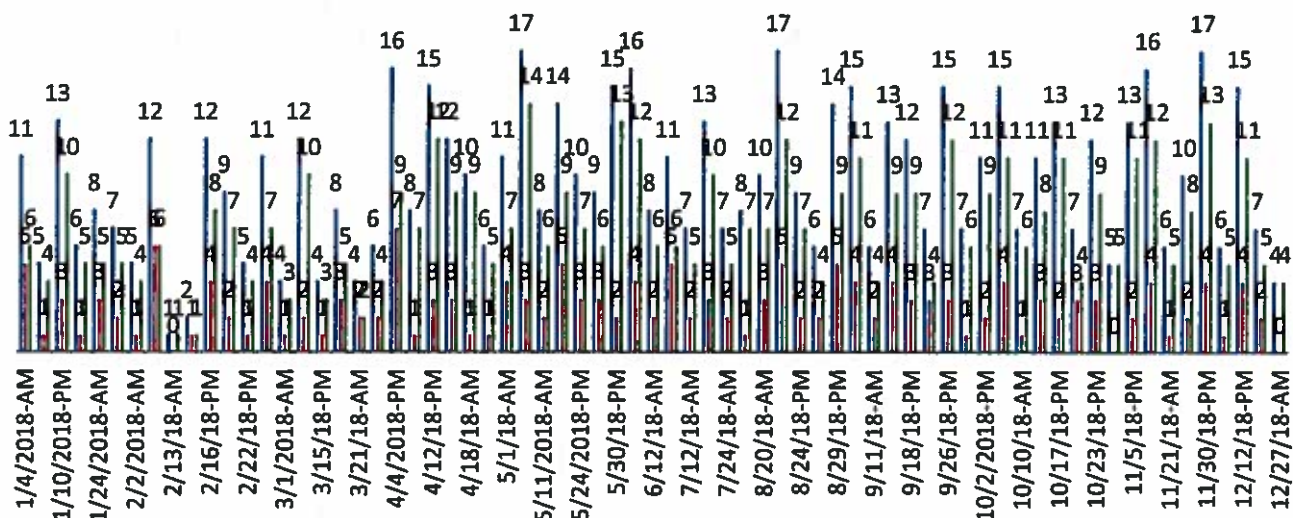
619 Moving Violations were issued with 197 Speeding Tickets issued on Hancock Drive, 121 Speeding Tickets  
issued on Perry Lane, and 76 Speeding Tickets issued on Balcones Drive (the three most heavily traveled  
streets through the neighborhood).

74% of Traffic Stops Do Not Live in the HPWBANA Area

11 x + p.10 →

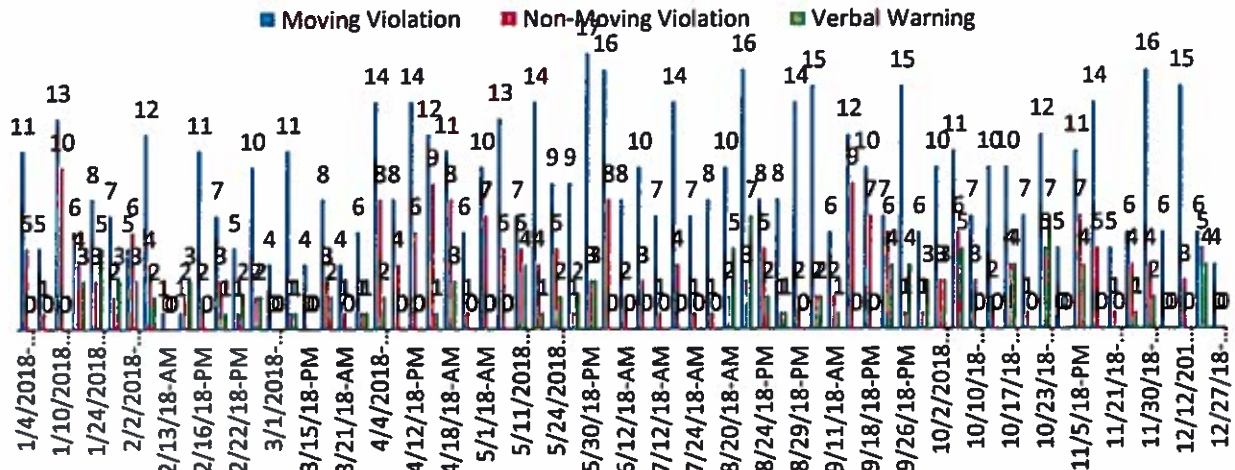
## Total Traffic Stops and Highland Park West Balcones Area Neighborhood Residents

■ Total Traffic Stops ■ Highland Park Neighborhood Residents ■ Non-Residents

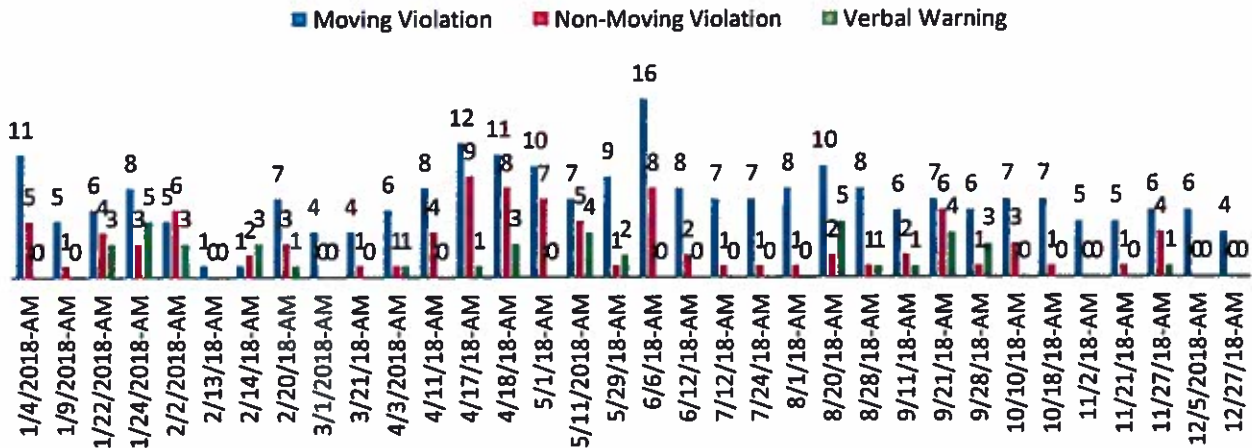


→ p.10

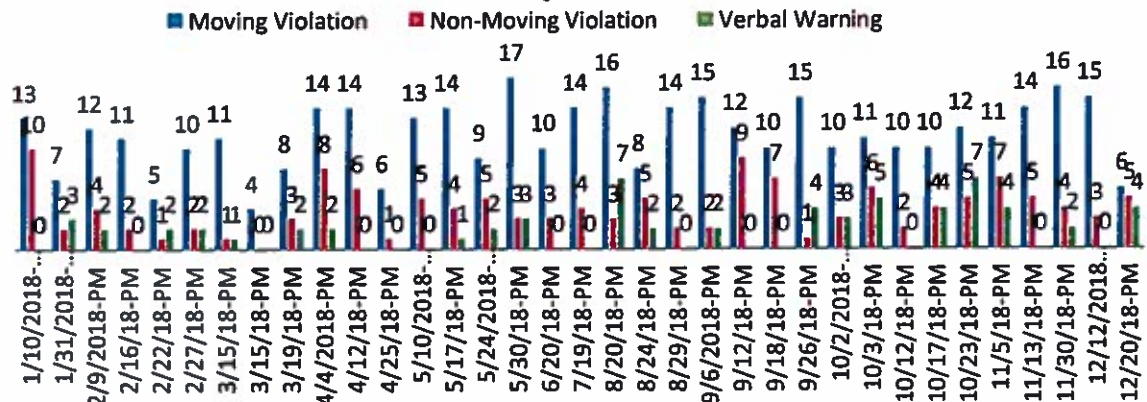
## Types of Violations



## Types of Violations Mornings



## Types of Violations Afternoons





THU 1/4 HP Patrol Log 7am to 9am / 3200 Blk Hancock X2 / 3000 Blk W. Highland Terr X1 38 mph Speeding / Valley Oak at W. Highland Terr (Stop Signs) X2 / 4900 Blk Fairview X1 speeding school zone / Valley Oak at W. Highland Terr off Perry

TUE 1/9 HP Patrol Log from 6:30am to 9:00am / 3200 Blk Hancock (radar) X3 / 3300 Blk Perry (radar) X2 / Both radar speed signs on Perry Ln. was not working. I checked them several times and they didn't come on / School zone was good, no issues /

WED 1/10 HP Patrol Log from 2pm to 6pm / 3200 blk Hancock X7 / 3300 Blk Perry Ln X1 / W. Highland Terr at Oak Valley (stop signs) X1 / Valley Oak at Perry (radar & Stop sign) X2 Balcones at Madrona (stop sign) X1 / 4300 Balcones X1 / 3900 blk Balcones X1 / escorted 2 young boys on small electric motor bikes from Shadow Ln, up Perry, down Balcones and then over to Crestway. Talked to both kids about not riding on the busy roadways and they need to go home. / stopped on Edgemont and talked with home owners and lots of kids playing in the yard and street.

MON 1/22 HP Patrol Log from 6:45am to 9am / 6:45am to 7am I drove around the neighborhood -everything checked ok / Radar 3200 blk Hancock X2 / subject stopped for speeding in the 3200 blk & also for speeding on Hancock in the 2900 block, plus 3 other violations / worked school zone by Sunny Ln (near cross walk) / Valley Oak at W. Highland Terr X2 3300 Blk Perry X1 / 3100 blk of W. Highland Terr Speeding X1

WED 1/24 HP Patrol Log from 6:45a to 9am / did roving patrol thru area from 6:45am to 7:05a / 3200 blk Hancock (radar) X4 / worked school zone on North end near cross walk & Sunny Ln. 3300 blk Perry (radar) X3 / Valley Oak at W. Highland Terr (Stop signs) X1

WED 1/31 HP Patrol Log from 2pm to 6:15pm / 3200 blk Hancock radar - X3 / school zone from 335pm to 310pm - gave 3 warnings for non-moving violations / 3900 Blk Balcones at Edgemont -radar X1 talked with home owner / 4500 blk Madrone talked with hm owner / 3300 blk Perry radar X2 talked with home owner of house I was sitting in front of. He was thankful I was working radar on Perry Ln / Valley Oak at W. Highland Terr -Stop signs X1 / 3200 Blk Hancock - golf cart on public roadway - warning given

FRI 2/2 HP Patrol log from 6:45am to 9am / roving patrol thru HP neighborhood / traffic hazard at Mount Bonnell Park, 2 vehicle sticking out into the roadway. Vehicles moved out of the road. / 3200 blk Hancock -Radar X2 / school zone 3 warnings for nonmoving violations. I was thanked by several people for being in the school zone and helping make it safe. / 3300 blk Perry - Radar X2 / Valley oak at W. Highland Terr -Stop signs X1 / roving patrol thru area east of MoPac

FRI 2/9 HP Patrol log from 2:00pm to 6pm / 3200 Blk Hancock - Radar X5 / School Zone (North end by Sunny Ln) / Valley Oak at W. Highland Terr. Stop signs X1 and Speeding X1 / 3300 Blk Perry Radar - X2 / Balcones at Madrona Stop Signs X1 / Madrona at Glen Rose -Stop Sign X1 / 3900 Blk Balcones radar X0 / 4900 Blk Fairview (driving wrong way) X1

TUE 2/13 HP Patrol 6:45am to 9am / while driving thru HP (dark, cold & raining) I saw a small white dog running loose with a 4 foot leash on Perry and Balcones Dr. I was able to catch the dog and secure him in my patrol car. I contacted the owner, who was at work. I took the dog back to her house and put him in the garage with a bed, water & food. While leaving the yard, I located a dead animal and notified the property owner of the deceased animal in the flower bed. I then went to work the last few mins of the school zone. / 3200 blk Hancock -radar X1

WED 2/14 HP Patrol 7:15am to 8:15am (no charge for time) worked school zone north end of Fairview this morning, the weather was very foggy, misting rain and cold. / 4900 blk Fairview X1 / Valley Oak at Perry Ln X1

FRI 2/16 HP Patrol log from 2:00pm to 6pm / 3200 blk Hancock Radar X6 / 3300 blk Perry Radar X2 / 3900 Blk Balcones Radar X0 / Valley Oak at Perry -Stop Sign X1 / Valley Oak at W. Highland Terr. Stop Sign X2

TUE 2/20 HP Patrol 6:45am to 9:00am / 3200 blk Hancock -Radar X4 / School zone / 3300 Blk Perry -Radar X2 / 3900 blk Balcones -Radar X2 / 5000 blk Fairview -wrong way X1 and one turkey walking around the 4500 blk of Edgemont /

THU 2/22 HP Patrol from 2pm to 6pm / 3200 blk Hancock -Radar X2 / School Zone / 3300 blk Perry -Radar X1 / Valley Oak at W. Highland Terr -Stop Sign X2 / 3900 blk Balcones -Radar X0

TUE 2/27 HP Patrol 2pm to 6pm / 3200 blk Hancock -Radar X2 / School zone - no crossing guard / 3300 Blk Perry -Radar X3 / Balcones at Mount Bonnell -Stop Sign X1 / Valley Oak at W. Highland Terr -Stop Sign X2 / 4300 blk Balcones Radar X1 / Balcones at Madrona -Stop Sign X1

THU 3/1 HP Patrol from 6:35 am to 9:00 am/ 3200 blk Hancock -radar X0 / 3300 blk Perry -radar X3 / Balcones at Madrona -Stop sign X1

THU 3/15 Thursday HP Patrol from 2:45pm to 6pm / 3300 Blk Perry -Radar X2 / 2900 Blk Perry -Radar X2 / Balcones at Mount Bonnell -Stop Sign X1 / 3200 Blk Hancock -Radar X2 / Balcones at Madrona -Stop Sign X4 / checked the radar speed signs and most of them were not working / talked w/home owner on Perry (very happy)

THU 3/15 Thursday HP Patrol from 8pm to 1am - Special patrol request for SXSW / 4900 blk Balcones -Radar X1 / Balcones at Madrona -Stop Sign X3

MON 3/19 HP Patrol from 2pm to 6pm / 3200 blk Hancock -Radar X1 / School Zone / 3300 blk Perry Ln -Radar X2 / Valley Oak at W. Highland Terr -Stop Signs X3/ 3900 Blk Balcones -Radar X1 / 2900 Blk Perry -Radar X1

WED 3/21 HP Patrol from 7am to 9am / 3200 blk Hancock -radar X2 / School Zone / 3300 blk Perry Ln -Radar X2 / Balcones at Madrona -Stop signs X0

TUE 4/3 HP Patrol from 6:45a to 9am / 3200 blk Hancock -Radar X2 / School Zone - / 3300 Blk Perry Ln. -Radar X2 / 3900 blk Balcones -Radar X0 / Valley Oak at W. Highland - Stop Sign X2 / Roving patrol thru neighborhood

WED 4/4 HP Patrol from 2pm to 6:15pm / 3200 blk Hancock -Radar X3 / School Zone Speeding X1 - / 3300 Blk Perry Ln. -Radar X1 / 3900 blk Balcones -Radar X4 / 4400 blk Balcones -Radar X1 / Balcones at Madrona Stop Sign X3 / Valley Oak at W. Highland Terr X1

TUE 4/11 HP Patrol from 6:45a to 9am / 3200 blk Hancock -Radar X3 / 3300 Blk Perry Ln. -Radar X3 / 3900 blk Balcones -Radar X1 / Valley Oak at W. Highland - Stop Sign X1 / Roving patrol thru neighborhood -east of Mopac -Mount Bonnell area -Crestway -Edgemont

WED 4/12 HP Patrol from 2pm to 6:00pm 3200 blk Hancock -Radar X5 / School Zone / 3300 Blk Perry Ln. -Radar X1 / 2900 Blk Perry -Radar X1 / 3900 blk Balcones -Radar X2 / 45 blk Mount Bonnell Radar X4 / Fairview - Drove wrong way X1 / Valley Oak at W. Highland Terr X0

TUE 4/17 HP Patrol from 6:45a to 10:15am (9am to 10am Hancock radar)/9am to 10am /3200 blk Hancock -Special request -Radar X6 / 3200 blk Hancock -Radar X3 / 3300 Blk Perry Ln. -Radar X1 / 3900 blk Balcones -Radar X1 / Valley Oak at W. Highland -Stop Sign X1 / Mount Bonnell rd radar - X0 / School Zone / Traffic stop on Hancock for speeding, vehicle tried to evade stop. Got vehicle stopped 3 blocks into neighborhood. Subject had warrants for his arrest and a suspended drivers license with no vehicle insurance.

WED 4/18 HP Patrol from 6:45 a.m. to 10:00 a.m. (7:40a to 825a Special radar request) (9:am to 10am Hancock radar) 9am to 10am /3200 Blk Hancock Special request -Radar X6 / 3200 Hancock -Radar X3 / 7:40a to 8:25am Shadow Ln - special request =Radar X0 / 3200 blk Perry Ln -Radar X2 /Traffic Stop for speeding on Perry -Driver had medical complaint, mother called to take driver, EMS refused / Traffic stop on Hancock for speeding -driver had warrants, suspended drivers License, 2 different ID"s and no insurance /

WED 4/25 HP Patrol Log 2p - 6p / 3200 Blk Hancock -Radar X3 / 3300 Blk Perry - Radar X2 / Balcones at Madrona -SS X1 / Valley Oak at W. Highland Terr -SS X0

TUE 5/1 HP Patrol - 6:45am to 10:10am / 7am -3200 Blk Hancock -Radar X0 / Balcones at Madrona -Stop sign X2 / 3300 blk Perry at Shadow X2 / 4700 blk Shadow Radar - X1 (42 mph) / Valley oak at W. Highland Terr - Stop Sign X1 / 9am to 10:15am 3200 Blk Hancock -Radar X5

THU 5/10 HP Patrol 2pm to 6pm / 3200 blk Hancock -Radar X4 / 3300 Blk Perry Ln. -Radar X3 / Balcones at Madrona -Stop Sign X3 / 4700 blk Highland Terr -Radar X1/ Valley Oak at W. Highland Terr -Stop Signs X2

FRI 5/11 HP Patrol 6:45am to 9am / 3200 Blk Hancock -Radar X1 / 3300 blk Perry Ln. -Radar X1 / 3900 Blk Balcones -Radar X4 / W. Highland terr at Fairview -Stop Sign X1 / 3300 blk Big Bend - Accident

THU 5/17 HP Patrol 2pm to 6pm / 3200 blk Hancock -Radar X6 / Balcones at Mount Bonnell -Stop Sign X3 / Sunny at Valley Oak -Stop Sign X1 / W. Highland Terr at Valley Oak -Stop Sign X1 / Balcones at Madrona -Stop Sign X2 / 3400 blk Perry -Radar X1

TUE 5/29 HP Patrol 6am to 9:15am / 3200 Blk Hancok -Radar X2 / School Zone / 3300 Blk Perry -Radar X3 / Valley Oak at Perry -Stop Sign X3 / 3900 Blk Balcones - Radar X1

WED 5/30 Last Day of School/ HP Patrol 2pm to 6pm / 3200 blk Hancock -Radar X4 / School Zone -Speeding X2 / 3300 blk Perry -Radar X0 / 3000 blk Perry at Horseshoe Bend - Radar X6 / Balcones at Madrona -Stop Sign X2 / Balcones south of Madrona -Speeding X1 / Crossed Double Yellow on Balcones into oncoming lane X2

WED 6/6 HP Patrol Log 7am to 10am / 3200 blk Hancock -Radar X4 / 4700 blk Balcones -Radar X2 / 4100 blk Balcones -Radar X3 / 3900 blk Balcones -Radar X2 / 4400 blk Edgemont -Radar X1 / Balcones at Parkcrest -Stop Sign X2 / 5100 blk Fairview - Drove wrong way on one way X2

TUE 6/12 HP Patrol Log 7am to 10am / 3200 blk Hancock -Radar X2 / 3700 blk Balcones -Radar X1 / 3900 blk Balcones -Radar X0 / 3300 Blk Perry Ln -radar X2 / 3100 Blk Perry -Radar X0 / Valley Oak at W. Highland Terr -Stop Signs X2 / 5000 blk Fairview -Drove Wrong way on one way X1

WED 6/20 HP Patrol Log 2pm to 6 pm / 3900 Blk Balcones -Radar X1 / Mount Bonnell moving Radar X0 / Mount Bonnell at Balcones -Stop Sign X0 / 3300 Perry -Radar X3 / 3200 Blk Hancock -Radar X2 / 3100 Blk Perry -Radar & Stop sign X0 / Balcones at Madrona -Stop sign X3 / Balcones at Edgemont -Blocking road X1

THU 7/12 HP Patrol Log 7am to 9am / moving radar on Balcones X0 / 3900 Blk Balcones -Radar X4 / 3300 Blk Perry Ln -Radar X2 // Valley Oak at W.Highland Terr -Stop sign X1 / Balcones at Madrona -Stop sign X0

THU 7/19 HP Patrol Log 2pm to 6pm / 3300 Blk Perry Ln -Radar X0 / 3200 blk Hancock -Radar X6 / Valley Oak at W.Highland Terr -Stop sign X3 / Balcones at Madrona - Stop sign X3 / 3900 blk Balcones -radar & Stop sign X2

TUE 7/24 HP Patrol log 7am to 9am / 3200 blk Hancock Dr. -Radar X5 / 3300 blk Perry Ln. Radar -X2 / Balcones at Madrona Stop Sign -X0

WED 8/1 HP Patrol Log 6:45am to 9am / 3200 Blk Hancock Radar X3 / 3000 Blk Perry Radar X0 / 3300 Blk Perry Radar X2 / Balcones at Madrona Stop Sign X2 / 4300 Blk Balcones Radar X1 // Assist home owner with dead car battery 3000 Blk Perry Ln - jump start home owners car

MON 8/20 MONDAY MORNING - HP Patrol Log 6:45am to 9am -- 1st day of school / 3200 blk Hancock Radar X2 / 4900 Blk Fairview -HP Elem school zone / 3200 Blk Hancock Radar X6 / 2900 Blk Perry Radar X1 / 3300 Blk Perry Radar X1

MON 8/20 MONDAY AFTERNOON - 08/20 HP Patrol Log 2pm to 6pm - 1st day of school / 3200 Blk Hancock Radar X5 / 4900 Blk Fairview -HP Elem School zone / 3300 Blk Perry Radar X2 / Balcones at Mnt Bonnell non-moving violation 1 / 4500 Blk Mnt Bonnell Rd Radar X6 / 3900 Blk Balcones Radar X2 / Valley Oak at W. Highland Terr Stop Sign X1

FRI 8/24 HP Patrol log 2pm to 6pm / 3300 blk Perry -Radar X0 / 3200 Blk Hancock Speeding X4 Drug traffic arrest X1 Drug Paraphernalia X1 / 3900 blk Balcones -Radar X1 / 4900 blk Fairview -const vehicles facing wrong way -talked to all workers and gave warning for driving and parking wrong direction on a one way street / Balcones at Madrona -Stop sign X1 / Valley Oak at W. Highland Terr -Stop Sign X3

TUE 8/28 HP Patrol log 7am to 9am / 3200 blk Hancock Speeding X1 / flagged down on fairview off Hancock by lady complaining about vehicles driving wrong way on fairview. No veh's at this time / I checked const. site 4900 blk Fairview for parking issue -no veh's / worked school zone / 4900 fairview - I talked to const foreman and a truck drove wrong way while I was there. Truck got a ticket for driving wrong way X1 / Balcones at Madrona Stop Sign X1 / 3900 Blk Balcones Speeding X3 /

WED 8/29 HP Patrol log 2pm to 6pm / 3300 Blk Perry -Radar speeding X1 / 3200 blk Hancock -radar speeding X7 / 3200 blk W. Highland Terr -blocked driveway -in school zone - Ticket X1 / 5000 blk Valley Oak -radar speeding X1 / Valley Oak at W. Highland Terr -Stop Sign X4

THU 9/6 HP Patrol log from 2pm to 6pm / 3200 Blk Hancock Speeding X5 / School zone X2 warnings / 3300 Blk Perry Ln Speeding X1 / 3900 Blk Balcones Speeding X4 / 4500 blk Mount Bonnell Speeding X2 / Madrona at Edgemont Ran stop sign X2 / 4500 Blk Edgemont Speeding X1 / I had driver from HP who wanted me to get hit by a car, she was upset for getting a speeding ticket on Hancock

TUE 9/11 HP Patrol from 6:45am to 9:00am / 3900 blk Balcones -radar X1 / 3300 Perry - Radar X1 / Valley Oak at Perry Ln -FTYROW from stop sign X1 / 3200 blk Hancock -radar X2 / Valley Oak at W. Highland Terr -blocking crosswalk & parked in intersection (school zone time) X1 / school zone

WED 9/12 HP Patrol from 2pm to 6pm / 3300 Blk Big Bend -Fictitious LP on vehicle X2, No DL, interference with investigation, No ins, No Reg, vehicle was tagged with vehicle owner having warrants / 5000 Blk Fairview -Drove wrong way X1 / 3200 -3300 Blk Perry -Radar X5 / Balcones at Madrona -Stop Sign X3 /Valley Oak at W. Highland -Stop sign X3

TUE 9/18 HP Patrol log 2:00pm to 6:00pm / 3200 blk Hancock -Speeding X2 / Balcones at Perry -Stop Sign X2 / 4700 blk Balcones -Passing School bus while unloading with red lights X2 / 3300 blk Perry -speeding X3 / Hight Terr at W. 45th -FTYROW at yield sign X1

FRI 9/21 HP Patrol log 7am to 9am / Foothill dr at Foothill Pkwy ran stop sign X1  
Fail to yield to Emg. Veh X1 / Madrona at Glen Rose ran stop sign X1 / 3200 blk Hancock  
speeding X4 / School zone 2 citations for non-moving violations /

WED 9/26 HP Patrol Log 2pm to 6pm / 3200 Blk Hancock -Speeding X 6 / 3300 Blk  
Perry Ln -Speeding X3 / 3900 Blk Balcones -Speeding X3 / Valley Oak at W.Highland -Stop  
Sign X2 / 5000 Blk Fairview -Drove wrong way on one way X1 School zone

FRI 9/28 HP Patrol Log 7am to 9am / 3300 Blk Perry Ln -Speeding 2 / 5000 Blk  
Fairview -drove wrong way on one way X1 / 3200 Blk Hancock -Speeding X3 / 3900 Blk  
Balcones -Speeding X0 / School zone / while in the school zone, I talked with a home owner  
about Constable patrol and calls in the area

TUE 10/2 HP Patrol Log from 2pm to 6pm / 3200 Blk Hancock -Speeding X3 / School  
zone - blocked driveway X1 & 3 parking warnings / 3900 blk Balcones -Speeding X2 / 3300  
blk Perry -Speeding X1 / Balcones at Madrona -Stop Sign X2 / Valley Oak at W. Highland  
Terr. -Stop sign X2 / 4800 Blk Crestway - House Party with Valet parking service out front -  
checked ok / FM 2222 closed by APD while moving over sized load out FM 2222

WED 10/3 HP Patrol Log from 2pm to 6pm / 4400 Blk Bull Creek closed due to gas leak -  
APD, AFD & Gas Co 1:20p-2:40p / 4900 Blk Fairview -Wrong way, on one way X1 (No DI &  
No ins), 2 other veh's from const site received warnings and moved before I was able to ticket  
them./ Valley Oak at Highland Terr -blocking cross walk X1, ran stop sign X4 / 3200 Blk  
Hancock -Speeding X3 / 3900 Blk Balcones -speeding X2 / 3400 blk Mount Bonnell -tree limb  
block part of roadway -moved to side of road / 4300 blk Balcones -speeding X1 / 4500 Blkd Ridge  
Oak -City of Austin crew working on cell tower / warning given to back hoe driver parked blocking  
cross walk on Valley Oak for his break time -back hoe moved

WED 10/10 HP Patrol log from 6:45am to 9am / roving patrol thru all of HP neighborhood  
/ Walk to school day -- 3200 blk Hancock -speeding X6 / Valley Oak at Highland Terr West -  
Stop Sign X1

FRI 10/12 HP Patrol log from 2pm to 6pm / 3200 Blk Hancock -Speeding X4 / 4800 blk  
Fairview (school zone) no parking-tow away X1 / 3900 blk Balcones -Speeding X2 /  
Madrona at Balcones -Stop sign X1 / Valley Oak at W. Highland Terr -Stop Sign X3

WED 10/17 HP Patrol from 2pm tp 6pm / 3200 blk Hancock -Speeding X2 / 3300 blk  
Perry Ln -Speeding X2 / 3900 blk Balcones -Speeding X1 / Valley Oak at Highland Terr - Stop  
Sign X2 / Balcones at Madron -Stop Sign X1 / 4000 Blk Mount Bonnell -Speeding X1 / 3500  
Blk Mount Bonnell -Speeding X1

THU 10/18 HP Patrol Log from 6:50am to 9:am / 3200 blk Hancock -Speeding X2 /  
School Zone Patrol / Valley Oak at Highland Terr -Stop Sign X1 / 3300 blk Perry Ln -Speeding  
X2 / Valley Oak at Perry Ln -Stop Sign X2

MON 10/22 HP board (Annual) Meeting 2 hrs

TUE 10/23 HP Patrol log from 2pm to 6pm / 3200 blk Hancock -Speeding X4 / School zone -Fairview -Drove Wrong Way X1, -Exp reg stickers X7 warnings, no crossing guard until 2:50pm / 3300 blk Perry -Speeding X3 / 3900 blk Balcones -Speeding X4

FRI 11/2 HP Patrol log from 6:50am to 9am / 3300 blk Perry Ln -Speeding X2 / 3200 blk Hancock -Speeding X2 / School Zone (north end) / Valley Oak at Perry Ln - Stop Sign X0 / 3900 blk Balcones -Speeding X1

MON 11/5 Highland Park Patrol log from 2pm to 6pm / 3200 blk Hancock -Speeding X4 / 4900 blk Fairview -Drove wrong way on one way X2 / 3300 blk Perry Ln -Speeding X1 / 3900 blk Balcones -Speeding X2 / Balcones at Madrona -Stop Sign X2

TUE 11/13 HP Patrol log from 2pm to 6pm / 3200 Hancock -Speeding X3 / 3900 Fairview -Drove wrong way (school zone) X1 / 4800 Balcones -Speeding X1 / 3300 Perry -Speeding X1 / 3600 Mount Bonnell rd. -Speeding X2 / Glen Rose at Madrona -Stop Sign X2 / Balcones at Madrona -Stop sign X2 / Highland at Valley Oak -Stop Sign X2 / subject sitting in vehicle at end of westfield -Const. worker -subject checked ok

WED 11/21 HP Patrol log from 6:50am to 9am / 3900 blk Balcones -Speeding X0 / Balcones at Madrona -Stop sign X1 / 3200 Hancock -Speeding X3 / Valley Oak at Highland Terr - Stop Sign X1 / No School

TUE 11/27 HP Patrol log from 7am to 9am / 3200 blk Hancock -Speeding X2 / 4900 blk Fairview -Speeding -school zone X1 No Parking X3 / 3300 blk Perry -Speeding X2 / valley Oak -Highland -Stop Sign X2 / 5000 blk Valley Oak -vehicle-traffic hazard -car parked 3' from curb into roadway. 2 home owners advised driver is a teachers aid. I went to school and had her move her car

FRI 11/30 HP Patrol log from 2pm to 6 pm / 3200 blk Hancock -Speeding X6 / 4800 Fairview (School Zone) Const truck with Trailer -parked wrong way, in no parking zone & too close to cross walk / 3300 blk Perry -Speeding X2 / 3900 blk Balcones -Speeding X1 / Balcones at Mount Bonnell -Ran Stop Sign X1 / Balcones at Madrona -Ran stop sign X3 / Valley Oak at Highland Terr -Ran stop sign X3

WED 12/5 HP Patrol log from 7am to 9am / 3200 blk Hancock -Speeding X5 / 3300 blk Perry -Speeding / roving radar on Balcones -Speeding X1

WED 12/12 HP Patrol log from 2pm to 6:15pm / 3200 blk Hancock -Speeding X4 / 3200 blk Hancock -one vehicle accident, Elderly woman was distracted while driving east on Hancock at fairview and hit the curb on Fairview and broke her wheel/streering- took about 1 hour to clear the call and get her car towed away. No injuries but was as school was letting out / 3300 blk Perry -Speeding X3 / 3900 blk Balcones -Speeding X1 / 4000 blk Mount Bonnell -Speeding X1 / W.35th at Balcones -Ran Stop sign X1 / Valley Oak at W. Highland Terr -Ran Stop Sign X5 / Followed school bus on Valley oak and watched unloading children at Sunny -no violations



THU 12/20 HP Patrol log from 2pm to 6:15pm / 3200 blk Hancock -Speeding X4 / 3300 Blk Perry -Speeding X2 / flagged down by motorist on Valley oak, advised of a bad accident that just occurred on Perry, south of Highland terr. Located accident at entrance to Camp Mabry. Both vehicles blocking roadway, requested EMS, AFD and APD. Occupants of one vehicle was minors. Called parents to respond to accident location. Bullet towing arrived and there tow truck broke down blocking traffic. We had to request another wrecker.

THU 12/27 HP Patrol log from 7am to 9am / 3300 blk Hancock -Speeding X1 / 3300 blk Perry -Speeding X2 / 4300 blk Balcones X0 / 3900 blk Balcones -const. truck blocking roadway / Mont Vista -const. truck blocking roadway at new house under construction -truck moved / Valley Oak at Hancock -stop sign X1

**Dynamic Speed Display Devices (Radar Speed Signs) were temporarily installed in four different areas on major streets within HPWBANA earlier this year by the Austin Transportation Department. Data from the DSDD's revealed Hancock Drive, west of MoPac, averages 8,419 vehicles on a weekday with 56.8% of the West Bound and 6% of the East Bound vehicles exceeding the speed limit; Perry Lane averages 2,399 vehicles on a weekday with between 15-20% of the vehicles exceeding the speed limit; Balcones Drive, between Hancock Drive and Perry Lane, averages 4,444 vehicles on a weekday with 5% of the North Bound and 34% of the South Bound vehicles exceeding the speed limit; and Balcones Drive, between Edgemont and West 35<sup>th</sup> Street, averages 4,676 vehicles on a weekday with 29% of the North Bound and 48% of the South Bound vehicles exceeding the speed limit.**

Of the streets where the DSDD's were located, Perry Lane and Balcones Drive, between Perry Lane and West 35<sup>th</sup> Street, do not have sidewalks. The data findings are consistent with the Constable's observation that Hancock Drive is the busiest street with the most speeders. And, it is a major concern since Hancock Drive is a major access street to Highland Park Elementary. Although Highland Park Elementary does not front on Hancock, the HPWBANA Board is working with the school to advocate for a School Speed Limit Zone expansion to at least include Hancock Drive.

The data can be found on the HPWBANA Website under the "Resources" tab, Traffic Info.



Highland Park West Balcones Area  
2018 Constable Patrol  
Year End Report

TUE	4/11	HP Patrol from 6:45a to 9am
3200 blk Hancock -Radar X3 / 3300 Blk Perry Ln. -Radar X3 / 3900 blk Balcones -Radar X1		
Valley Oak at W.Highland - Stop Sign X1 / Roving patrol thru neighborhood -east of Mopac -Mount Bonnell area -Crestway -Edgemont		
WED	4/12	HP Patrol from 2pm to 6:00pm
3200 blk Hancock -Radar X5 / School Zone / 3300 Blk Perry Ln. -Radar X1 / 2900 Blk Perry -Radar X1 / 3900 blk Balcones -Radar X2 /		
45 blk Mount Bonnell Radar X4 / Fairview -Drove wrong way X1 / Valley Oak at W. Highland Terr X0		
TUE	4/17	HP Patrol from 6:45a to 10:15am (9am to 10am Hancock radar)
9am to 10am 3200 blk Hancock -Special request -Radar X6 / 3200 blk Hancock -Radar X3 / 3300 Blk Perry Ln. -Radar X1 / 3900 blk Balcones -Radar X1 /		
Valley Oak at W.Highland -Stop Sign X1 / Mount Bonnell rd radar -X0 / School Zone		
Traffic stop on Hancock for speeding, vehicle tried to evade stop. Got vehicle stopped 3 blocks into neighborhood. Subject had warrants for his arrest and a suspended drivers license with no vehicle insurance.		
WED	4/18	HP Patrol from 6:45 a.m to 10:00 a.m. (7:40a to 8:25a Special radar request) (9.am to 10am Hancock radar)
9am to 10am 3200 Blk Hancock Special request -Radar X6 / 3200 Hancock -Radar X3 / 7.40a to 8:25am Shadow Ln - special request =Radar X0 /		
3200 blk Perry Ln -Radar X2 /		
Traffic Stop for speeding on Perry -Driver had medical complaint, mother called to take driver, EMS refused / Traffic stop on Hancock for speeding -driver had warrants, suspended drivers License, 2 different ID's and no insurance /		
WED	4/25	HP Patrol Log 2p - 6p
3200 Blk Hancock -Radar X3 / 3300 Blk Perry -Radar X2 / Balcones at Madrona -SS X1 / Valley Oak at W. Highland Terr -SS X0		
TUE	5/1	HP Patrol - 6:45am to 10:10am
7am -3200 Blk Hancock -Radar X0 / Balcones at Madrona -Stop sign X2 / 3300 blk Perry at Shadow X2 / 4700 blk Shadow Radar -X1 (42 mph)		
Valley oak at W. Highland Terr - Stop Sign X1 / 9am to 10:15am 3200 Blk Hancock -Radar X5		
THU	5/10	HP Patrol 2pm to 6pm
3200 blk Hancock -Radar X4 / 3300 Blk Perry Ln. -Radar X3 / Balcones at Madrona -Stop Sign X3 / 4700 blk Highland Terr -Radar X1		
Valley Oak at W. Highland Terr -Stop Signs X2		
FRI	5/11	HP Patrol 6:45am to 9am /
3200 Blk Hancock -Radar X1 / 3300 blk Perry Ln. -Radar X1 / 3900 Blk Balcones -Radar X4 / W. Highland terr at Fairview -Stop Sign X1		
3300 blk Big Bend - Accident		
THU	5/17	HP Patrol 2pm to 6pm /
3200 blk Hancock -Radar X6 / Balcones at Mount Bonnell -Stop Sign X3 / Sunny at Valley Oak -Stop Sign X1 /		
W. Highland Terr at Valley Oak -Stop Sign X1 / Balcones at Madrona -Stop Sign X2 / 3400 blk Perry -Radar X1		
THU	5/24	HP Patrol 2pm to 6pm /
3200 blk Hancock -Radar X3 / School Zone speeding X1 (and a No Parking X1) / Balcones at Madrona -Stop Sign X1 / 3900 Balcones - Radar X2		
W. Highland Terr at Valley Oak -Stop Sign X0 / 3300 Blk Perry -Radar X2 / Perry at Valley Oak -Stop Signs X0		
TUE	5/29	HP Patrol 6am to 9:15am /
3200 Blk Hancock -Radar X2 / School Zone / 3300 Blk Perry -Radar X3 / Valley Oak at Perry -Stop Sign X3 / 3900 Blk Balcones -Radar X1		
WED	5/30	Last Day of School/ HP Patrol 2pm to 6pm
3200 blk Hancock -Radar X4 / School Zone -Speeding X2 / 3300 blk Perry -Radar X0 / 3000 blk Perry at Horseshoe Bend -Radar X6 /		
Balcones at Madrona -Stop Sign X2 / Balcones south of Madrona -Speeding X1 / Crossed Double Yellow on Balcones into oncoming lane X2		
WED	6/6	HP Patrol Log 7am to 10am
3200 blk Hancock -Radar X4 / 4700 blk Balcones -Radar X2 / 4100 blk Balcones -Radar X3 / 3900 blk Balcones -Radar X2		
4400 blk Edgemont -Radar X1 / Balcones at Parkcrest -Stop Sign X2 / 5100 blk Fairview -Drove wrong way on one way X2		
TUE	6/12	HP Patrol Log 7am to 10am /
3200 blk Hancock -Radar X2 / 3700 blk Balcones -Radar X1 / 3900 blk Balcones -Radar X0 / 3300 Blk Perry Ln -radar X2 /		
3100 Blk Perry -Radar X0 / Valley Oak at W. Highland Terr -Stop Signs X2 / 5000 blk Fairview -Drove Wrong way on one way X1		
WED	6/20	HP Patrol Log 2pm to 6 pm /
3900 Blk Balcones -Radar X1 / Mount Bonnell moving Radar X0 / Mount Bonnell at Balcones -Stop Sign X0 / 3300 Perry -Radar X3 /		
3200 Blk Hancock -Radar X2 / 3100 Blk Perry -Radar & Stop sign X0 / Balcones at Madrona -Stop sign X3 / Balcones at Edgemont -Blocking road X1		
THU	7/12	HP Patrol Log 7am to 9am /
moving radar on Balcones X0 / 3900 Blk Balcones -Radar X4 / 3300 Blk Perry Ln -Radar X2 / Valley Oak at W.Highland Terr -Stop sign X1 /		
Balcones at Madrona -Stop sign X0		
THU	7/19	HP Patrol Log 2pm to 6pm /
3300 Blk Perry Ln -Radar X0 / 3200 blk Hancock -Radar X6 / Valley Oak at W.Highland Terr -Stop sign X3 / Balcones at Madrona -Stop sign X3 /		
3900 blk Balcones -radar & Stop sign X2		
TUE	7/24	HP Patrol log 7am to 9am /
3200 blk Hancock Dr. -Radar X5 / 3300 blk Perry Ln. Radar -X2 / Balcones at Madrona Stop Sign -X0		
WED	8/1	HP Patrol Log 6:45am to 9am /
3200 Blk Hancock Radar X3 / 3000 Blk Perry Radar X2 / Balcones at Madrona Stop Sign X2 /		
4300 Blk Balcones Radar X1 / Assist home owner with dead car battery 3000 Blk Perry Ln - jump start home owners car		
MON	8/20	MONDAY MORNING - HP Patrol Log 6:45am to 9am - 1st day of school /
3200 blk Hancock Radar X2 / 4900 Blk Fairview -HP Elem school zone / 3200 Blk Hancock Radar X6 / 2900 Blk Perry Radar X1 / 3300 Blk Perry Radar X1		
MON	8/20	MONDAY AFTERNOON - 08/20 HP Patrol Log 2pm to 6pm - 1st day of school /
3200 Blk Hancock Radar X5 / 4900 Blk Fairview -HP Elem School zone / 3300 Blk Perry Radar X2 / Balcones at Mnt Bonnell non-moving violation 1 /		
4500 Blk Mnt Bonnell Rd Radar X6 / 3900 Blk Balcones Radar X2 / Valley Oak at W. Highland Terr Stop Sign X1		
FRI	8/24	HP Patrol log 2pm to 6pm /
3300 blk Perry -Radar X0 / 3200 Blk Hancock Speeding X4 Drug traffic arrest X1 Drug Paraphernalia X1 / 3900 blk Balcones -Radar X1		
4900 blk Fairview -const vehicles facing wrong way -talked to all workers and gave warning for driving and parking wrong direction on a one way street /		
Balcones at Madrona -Stop sign X1 / Valley Oak at W. Highland Terr -Stop Sign X3		
TUE	8/28	HP Patrol log 7am to 9am /
3200 blk Hancock Speeding X1 / flagged down on fairview off Hancock by lady complaining about vehicles driving wrong way on fairview. No veh's at this time / I checked const. site 4900 blk Fairview for parking issue -no veh's / worked school zone / 4900 fairview - I talked to const foreman and a truck drove wrong way while I was there. Truck got a ticket for driving wrong way X1 / Balcones at Madrona Stop Sign X1 / 3900 Blk Balcones Speeding X3 /		
WED	8/29	HP Patrol log 2pm to 6pm /
3300 Blk Perry -Radar speeding X1 / 3200 blk Hancock -radar speeding X7 / 3200 blk W. Highland Terr -blocked driveway -in school zone - Ticket X1		
5000 blk Valley Oak -radar speeding X1 / Valley Oak at W. Highland Terr -Stop Sign X4		

Highland Park West Balcones Area  
2018 Constable Patrol  
Year End Report

THU	9/6	HP Patrol log from 2pm to 6pm /
		3200 Blk Hancock -Speeding X5 / School zone X2 warnings / 3300 Blk Perry Ln -Speeding X1 / 3900 Blk Balcones -Speeding X4 /
		4500 Blk Mount Bonnell -Speeding X2 / Madrona at Edgemont -Ran stop sign X2 / 4500 Blk Edgemont -Speeding X1 /
		I had driver from HP who wanted me to get hit by a car, she was upset for getting a speeding ticket on Hancock
TUE	9/11	HP Patrol from 6:45am to 9:00am
		3900 Blk Balcones -radar X1 / 3300 Perry -Radar X1 / Valley Oak at Perry Ln -FTYROW from stop sign X1 / 3200 Blk Hancock -radar X2 /
		Valley Oak at W. Highland Terr -blocking crosswalk & parked in intersection (school zone time) X1 / school zone
WED	9/12	HP Patrol from 2pm to 6pm
		3300 Blk Big Bend -Fictitious LP on vehicle X2, No DL, interference with investigation, No ins, No Reg, vehicle was tagged with vehicle owner having warrants /
		5000 Blk Fairview -Drove wrong way X1 / 3200 -3300 Blk Perry -Radar X5 / Balcones at Madrona -Stop Sign X3 / Valley Oak at W. Highland -Stop sign X3
TUE	9/18	HP Patrol log 2:00pm to 6:00pm
		3200 Blk Hancock -Speeding X2 / Balcones at Perry -Stop Sign X2 / 4700 Blk Balcones -Passing School bus while unloading with red lights X2 /
		3300 Blk Perry -speeding X3 / Hight Terr at W. 45th -FTYROW at yield sign X1
FRI	9/21	HP Patrol log 7am to 9am
		Foothill dr at Foothill Pkwy -ran stop sign X1 -Fail to yield to Emg. Veh X1 / Madrona at Glen Rose -ran stop sign X1 / 3200 Blk Hancock -speeding X4 /
		School zone 2 citations for non-moving violations /
WED	9/26	HP Patrol Log 2pm to 6pm /
		3200 Blk Hancock -Speeding X6 / 3300 Blk Perry Ln -Speeding X3 / 3900 Blk Balcones -Speeding X3 / Valley Oak at W. Highland -Stop Sign X2
		5000 Blk Fairview -Drove wrong way on one way X1 -School zone
FRI	9/28	HP Patrol Log 7am to 9am /
		3300 Blk Perry Ln -Speeding 2 / 5000 Blk Fairview -drove wrong way on one way X1 / 3200 Blk Hancock -Speeding X3 /
		3900 Blk Balcones -Speeding X0 / School zone / while in the school zone, I talked with a home owner about Constable patrol and calls in the area
TUE	10/2	HP Patrol Log from 2pm to 6pm /
		3200 Blk Hancock -Speeding X3 / School zone - blocked driveway X1 & 3 parking warnings / 3900 Blk Balcones -Speeding X2 /
		3300 Blk Perry -Speeding X1 / Balcones at Madrona -Stop Sign X2 / Valley Oak at W. Highland Terr. -Stop sign X2 /
		4800 Blk Crestway - House Party with Valet parking service out front -checked ok / FM 2222 closed by APD while moving over sized load out FM 2222
WED	10/3	HP Patrol Log from 2pm to 6pm / 4400 Blk Bull Creek closed due to gas leak - APD, AFD & Gas Co 1:20p-2:40p /
		4900 Blk Fairview -Wrong way, on one way X1 (No DI & No ins), 2 other veh's from const site received warnings and moved before I was able to ticket them /
		Valley Oak at Highland Terr -blocking cross walk X1, ran stop sign X4 / 3200 Blk Hancock -Speeding X3 / 3900 Blk Balcones -speeding X2 /
		3400 Blk Mount Bonnell -tree limb block part of roadway -moved to side of road / 4300 Blk Balcones -speeding X1 / 4500 Blk Ridge Oak -City of Austin crew
		working on cell tower / warning given to back hoe driver parked blocking cross walk on Valley Oak for his break time -back hoe moved
WED	10/10	HP Patrol log from 6:45am to 9am /
		roving patrol thru all of HP neighborhood / Walk to school day -- 3200 Blk Hancock -speeding X6 / Valley Oak at Highland Terr West -Stop Sign X1
FRI	10/12/1	HP Patrol log from 2pm to 6pm /
		3200 Blk Hancock -Speeding X4 / 4800 Blk Fairview (school zone) no parking-tow away X1 / 3900 Blk Balcones -Speeding X2 /
		Madrona at Balcones -Stop sign X1 / Valley Oak at W. Highland Terr -Stop Sign X3
WED	10/17	HP Patrol from 2pm to 6pm /
		3200 Blk Hancock -Speeding X2 / 3300 Blk Perry Ln -Speeding X2 / 3900 Blk Balcones -Speeding X1 / Valley Oak at Highland Terr - Stop Sign X2 /
		Balcones at Madron -Stop Sign X1 / 4000 Blk Mount Bonnell -Speeding X1 / 3500 Blk Mount Bonnell -Speeding X1
THU	10/18	HP Patrol Log from 6:50am to 9:am /
		3200 Blk Hancock -Speeding X2 / School Zone Patrol / Valley Oak at Highland Terr -Stop Sign X1 / 3300 Blk Perry Ln -Speeding X2 /
		Valley Oak at Perry Ln -Stop Sign X2
MON	10/22	HP board Meeting 2 hrs
TUE	10/23	HP Patrol log from 2pm to 6pm /
		3200 Blk Hancock -Speeding X4 / School zone -Fairview -Drove Wrong Way X1, -Exp reg stickers X7 warnings, no crossing guard until 2:50pm /
		3300 Blk Perry -Speeding X3 / 3900 Blk Balcones -Speeding X4
FRI	11/2	HP Patrol log from 6:50am to 9am /
		3300 Blk Perry Ln -Speeding X2 / 3200 Blk Hancock -Speeding X2 / School Zone (north end) / Valley Oak at Perry Ln - Stop Sign X0 /
		3900 Blk Balcones -Speeding X1
MON	11/5	Highland Park Patrol log from 2pm to 6pm /
		3200 Blk Hancock -Speeding X4 / 4900 Blk Fairview -Drove wrong way on one way X2 / 3300 Blk Perry Ln -Speeding X1 /
		3900 Blk Balcones -Speeding X2 / Balcones at Madrona -Stop Sign X2
TUE	11/13	HP Patrol log from 2pm to 6pm
		3200 Hancock -Speeding X3 / 3900 Fairview -Drove wrong way (school zone) X1 / 4800 Balcones -Speeding X1 / 3300 Perry -Speeding X1
		3600 Mount Bonnell rd. -Speeding X2 / Glen Rose at Madrona -Stop Sign X2 / Balcones at Madrona -Stop sign X2 / Highland at Valley Oak -Stop Sign X2
		subject sitting in vehicle at end of westfield -Const. worker -subject checked ok
WED	11/21	HP Patrol log from 6:50am to 9am
		3900 Blk Balcones -Speeding X0 / Balcones at Madrona -Stop sign X1 / 3200 Hancock -Speeding X3 / Valley Oak at Highland Terr - Stop Sign X1
		No School
TUE	11/27	HP Patrol log from 7am to 9am
		3200 Blk Hancock -Speeding X2 / 4900 Blk Fairview -Speeding -school zone X1 No Parking X3 / 3300 Blk Perry -Speeding X2 / valley Oak-Highland -Stop
		Sign X2 / 5000 Blk Valley Oak -vehicle-traffic hazard -car parked 3' from curb into roadway. 2 home owners advised driver is a teachers aid. I went to school
		and had her move her car
FRI	11/30	HP Patrol log from 2pm to 6 pm /
		3200 Blk Hancock -Speeding X6 / 4800 Fairview (School Zone) Const truck with Trailer -parked wrong way, in no parking zone & too close to cross walk
		3300 Blk Perry -Speeding X2 / 3900 Blk Balcones -Speeding X1 / Balcones at Mount Bonnell -Ran Stop Sign X1 / Balcones at Madrona -Ran stop sign X3
		Valley Oak at Highland Terr -Ran stop sign X3
WED	12/5	HP Patrol log from 7am to 9am / 3200 Blk Hancock -Speeding X5 / 3300 Blk Perry -Speeding / roving radar on Balcones -Speeding X1
WED	12/12	HP Patrol log from 2pm to 6:15pm
		3200 Blk Hancock -Speeding X4 / 3200 Blk Hancock -one vehicle accident, Elderly woman was distracted while driving east on Hancock at fairview and hit
		the curb on Fairview and broke her wheel/steering- took about 1 hour to clear the call and get her car towed away. No injuries but was as school was letting out
		3300 Blk Perry -Speeding X3 / 3900 Blk Balcones -Speeding X1 / 4000 Blk Mount Bonnell -Speeding X1 / W.35th at Balcones -Ran Stop sign X1
		Valley Oak at W. Highland Terr -Ran Stop Sign X5 / Followed school bus on Valley oak and watched unloading children at Sunny -no violations

Highland Park West Balcones Area  
2018 Constable Patrol  
Year End Report

THU	12/20	HP Patrol log from 2pm to 6:15pm
3200 blk Hancock -Speeding X4 / 3300 Blk Perry -Speeding X2 / flagged down by motorist on Valley oak, advised of a bad accident that just occurred on Perry, south of Highland terr. Located accident at entrance to Camp Mabry. Both vehicles blocking roadway, requested EMS, AFD and APD. Occupants of one vehicle was minors. Called parents to respond to accident location. Bullet towing arrived and there tow truck broke down blocking traffic. We had to request another wrecker.		
THU	12/27	HP Patrol log from 7am to 9am
3300 blk Hancock -Speeding X1 / 3300 blk Perry -Speeding X2 / 4300 blk Balcones X0 / 3900 blk Balcones -const. truck blocking roadway		
Mont Vista -const. truck blocking roadway at new house under construction -truck moved / Valley Oak at Hancock -stop sign X1		

## Highland Park West Balcones Area 2018 Constable Patrol Year End Report

Duty Days				Hours Worked (24-hh:mm)			Enforcement Summary										Extra Hours - Not Charged				
Day	Date	Traffic Stops	Violations		START TIME	END TIME	Total Duty Hours	H.P.N.R.	Moving Violations	Non-Moving Violations	Verbal Warnings	School Zone	Home Owner Contact	Assist Agency APD-EMS-FD	Accidents	Assist Public					
MON	1/1																				
TUE	1/2																				
WED	1/3																				
THU	1/4	11	16		6:45a	9:10a	2.00	5	11	5	0	2	1	0	0	1	0.25				
FRI	1/5																				
PERIOD	N/A	11	16				2.00	5	11	5	0	2	1	0	0	1	0.25				

Day	Duty Days		Hours Worked (24-hr:mm)				Enforcement Summary										Extra Hours - Not Charged				
	Date	Traffic Stops	Violations	START TIME	END TIME	Total Duty Hours	H.P.N.R.	Moving Violations	Non-Moving Violations	Verbal Warnings	School Zone	Home Owner Contact	Assist Agency APD-EMS-FD	Accidents	Assist Public						
MON	1/8																				
TUE	1/9	5	6	6:30a	9:00a	2.50	1	5	1	0	1	1	0	0	0	0.5					
WED	1/10	13	23	2:00p	6:00p	4.00	3	13	10	0	0	3	0	0	0	0					
THU	1/11																				
FRI	1/12																				
SAT	1/13																				
SUN	1/14																				
TOTAL		18	29			6.50	4	18	11	0	1	4	0	0	0	0.5					

Duty Days				Hours Worked (24-hh:mm)			Enforcement Summary														
Day	Date	Traffic Stops	Violations		START TIME	END TIME	Total Duty Hours	H.P.N.R.	Moving Violations	Non-Moving Violations	Verbal Warnings	School Zone	Home Owner Contact	Assist Agency APD-EMS-FD	Accidents	Assist Public	Extra Hours - Not Charged				
MON	1/22	0	10		6:45a	9:00a	2.25	1	0	4	3	3	1	0	0	0	0.25				
TUE	1/23	0	10		6:45a	9:00a	2.25	1	0	4	3	3	1	0	0	0	0.25				
WED	1/24	0	11		6:45a	9:00a	2.25	3	0	3	6	6	2	0	0	0	0.25				
THU	1/25	0	10		6:45a	9:00a	2.25	1	0	4	3	3	1	0	0	0	0.25				
FRI	1/26	0	10		6:45a	9:00a	2.25	1	0	4	3	3	1	0	0	0	0.25				
Totals		14	21				4.50	4	14	7	8	8	3	0	0	0	0.5				

Duty Days				Hours Worked (24-hh:mm)			Enforcement Summary														
Day	Date	Traffic Stops	Violations		START TIME	END TIME	Total Duty Hours	H.P.N.R.	Moving Violations	Non-Moving Violations	Verbal Warnings	School Zone	Home Owner Contact	Assist Agency APD-EMS-FD	Accidents	Assist Public	Extra Hours - Not Charged				
MON	1/29																				
TUE	1/30																				
WED	1/31	7	9		2:00p	6:16p	4.25	2	7	2	3	3	3	0	0	0	0.25				
THU	2/1																				
FRI	2/2	3	3		6:45a	9:00a	2.25	1	0	0	3	3	1	0	0	0	0.25				
TOTAL	N/A	12	14				6.50	3	12	2	6	6	4	0	0	0	0.6				



Highland Park West Balcones Area  
2018 Constable Patrol  
Year End Report

Duty Days				Hours Worked (24-hh:mm)			Enforcement Summary										Extra Hours - Not Charged				
Day	Date	Traffic Stops	Violations		START TIME	END TIME	Total Duty Hours	H.P.N.R.	Moving Violations	Non-Moving Violations	Verbal Warnings	School Zone	Home Owner Contact	Assist Agency APD-EMS-FD	Accidents	Assist Public					
MON	2/5																				
TUE	2/6																				
WED	2/7																				
THU	2/8																				
FRI	2/9	12	18		2:00P	8:00P	4.00	6	12	4	2	2	3	0	0	0	0				
Monthly	N.S.	12	18				4.00	6	12	4	2	2	3	0	0	0	0				

Duty Days				Hours Worked (24-hh:mm)			Enforcement Summary										Extra Hours - Not Charged				
Day	Date	Traffic Stops	Violations		START TIME	END TIME	Total Duty Hours	H.P.N.R.	Moving Violations	Non-Moving Violations	Verbal Warnings	School Zone	Home Owner Contact	Assist Agency APD-EMS-FD	Accidents	Assist Public					
MON	2/12																				
TUE	2/13		1		6:45a	9:00a	2.25	0	1	0	0	0	0	0	0	2	0.25				
WED	2/14		2		7:15a	8:15a	1.00	1	1	0	3	0	1	0	0	0	1				
THU	2/15																				
FRI	2/16		13		2:00p	8:10p	4.00	4	10	2	0	0	1	0	0	0	0.25				
Monthly	N.S.	15	16				7.25	5	13	4	3	3	2	0	0	2	1.5				

Duty Days				Hours Worked (24-hh:mm)			Enforcement Summary										Extra Hours - Not Charged				
Day	Date	Traffic Stops	Violations	START TIME	END TIME	Total Duty Hours	H.P.N.R.	Moving Violations	Non-Moving Violations	Verbal Warnings	School Zone	Home Owner Contact	Assist Agency APD-EMS-FD	Accidents	Assist Public						
MON	2/19																				
TUE	2/20	9	10	6:45a	9:00a	2.25	2	7	3	1	2	0	0	0	0	0.25					
WED	2/21																				
THU	2/22	5	6	2:00p	6:00p	4.00	1	5	1	2	2	1	0	0	0	0					
FRI	2/23																				
Subtotal	N.S.	14	16			6.25	3	12	4	3	4	1	0	0	0	0.25					

Duty Days				Hours Worked (24-hh:mm)			Enforcement Summary										Extra Hours - Not Charged				
Day	Date	Traffic Stops	Violations	START TIME	END TIME	Total Duty Hours	H.P.N.R.	Moving Violations	Non-Moving Violations	Verbal Warnings	School Zone	Home Owner Contact	Assist Agency APD-EMS-FD	Accidents	Assist Public						
MON	2/26																				
TUE	2/27	17	12	2:00p	6:00p	4.00	4	10	2	2	2	1	0	0	0	0					
WED	2/28																				
THU	3/1	4	4	6:35a	9:00a	2.50	1	4	0	0	0	1	0	0	0	0.25					
FRI	3/2																				
Monthly	N.S.	15	16			6.50	5	14	2	2	2	2	0	0	0	0.25					

**Highland Park West Balcones Area  
2018 Constable Patrol  
Year End Report**

Duty Days				Hours Worked (24-hh:mm)			Enforcement Summary												
Day	Date	Traffic Stops	Violations	START TIME	END TIME	Total Duty Hours	H.P.N.R.	Moving Violations	Non-Moving Violations	Verbal Warnings	School Zone	Home Owner Contact	Assist Agency APD-EMS-FD	Accidents	Assist Public	Extra Hours - Not Charged			
MON	3/12																		
TUE	3/13																		
WED	3/14																		
THU	3/15	12	12	2:45p	6:00p	3.00	2	11	1	1	0	2	0	0	0	0.25			
THU	3/15	4	4	6:00p	1:00a	5.00	1	4	0	0	0	0	0	0	0	1			
FRI	3/16																		
<b>Weekly Totals</b>	<b>N.E.</b>	<b>16</b>	<b>16</b>			<b>8.00</b>	<b>3</b>	<b>15</b>	<b>1</b>	<b>1</b>	<b>0</b>	<b>2</b>	<b>0</b>	<b>0</b>	<b>0</b>	<b>1.25</b>			

Duty Days				Hours Worked (24-hh:mm)			Enforcement Summary												
Day	Date	Traffic Stops	Violations	START TIME	END TIME	Total Duty Hours	H.P.N.R.	Moving Violations	Non-Moving Violations	Verbal Warnings	School Zone	Home Owner Contact	Assist Agency APD-EMS-FD	Accidents	Assist Public	Extra Hours - Not Charged			
MON	3/19	8	11	2:00p	6:00p	4.00	3	6	3	2	2	1	0	0	0	0			
TUE	3/20																		
WED	3/21	1	6	7:00a	9:00a	2.00	2	4	1	0	0	1	0	0	0	0			
THU	3/22																		
FRI	3/23																		
<b>Weekly Totals</b>	<b>N.E.</b>	<b>12</b>	<b>16</b>			<b>6.00</b>	<b>5</b>	<b>12</b>	<b>4</b>	<b>2</b>	<b>2</b>	<b>2</b>	<b>0</b>	<b>0</b>	<b>0</b>	<b>0</b>			

Duty Days				Hours Worked (24-hh:mm)			Enforcement Summary												
Day	Date	Traffic Stops	Violations	START TIME	END TIME	Total Duty Hours	H.P.N.R.	Moving Violations	Non-Moving Violations	Verbal Warnings	School Zone	Home Owner Contact	Assist Agency APD-EMS-FD	Accidents	Assist Public	Extra Hours - Not Charged			
MON	4/2																		
TUE	4/3	8	7	6:46a	9:00a	2.25	2	5	1	1	1	0	0	0	0	0.25			
WED	4/4	16	22	2:00p	6:15p	4.25	7	14	8	2	3	1	0	0	0	0.25			
THU	4/5																		
FRI	4/6																		
<b>Weekly Totals</b>	<b>N.E.</b>	<b>22</b>	<b>29</b>			<b>6.50</b>	<b>9</b>	<b>20</b>	<b>9</b>	<b>3</b>	<b>4</b>	<b>1</b>	<b>0</b>	<b>0</b>	<b>0</b>	<b>0.5</b>			

Duty Days				Hours Worked (24-hh:mm)			Enforcement Summary												
Day	Date	Traffic Stops	Violations	START TIME	END TIME	Total Duty Hours	H.P.N.R.	Moving Violations	Non-Moving Violations	Verbal Warnings	School Zone	Home Owner Contact	Assist Agency APD-EMS-FD	Accidents	Assist Public	Extra Hours - Not Charged			
MON	4/9																		
TUE	4/10																		
WED	4/11	12	12	6:45a	9:00a	2.25	1	8	4	0	0	0	0	0	0	0.25			
THU	4/12	15	20	2:00p	6:00p	4.00	3	14	6	0	0	2	0	0	0	0			
FRI	4/13																		
<b>Weekly Totals</b>	<b>N.E.</b>	<b>27</b>	<b>32</b>			<b>6.25</b>	<b>4</b>	<b>22</b>	<b>10</b>	<b>0</b>	<b>0</b>	<b>2</b>	<b>0</b>	<b>0</b>	<b>0</b>	<b>0.25</b>			



## Highland Park West Balcones Area 2018 Constable Patrol Year End Report

Duty Days				Hours Worked (24-hh:mm)			Enforcement Summary											
Day	Date	Traffic Stops	Violations		START TIME	END TIME	Total Duty Hours	H.P.N.R.	Moving Violations	Non-Moving Violations	Verbal Warnings	School Zone	Home Owner Contact	Assist Agency APD-EMS-FD	Accidents	Assist Public	Extra Hours - Not Charged	
MON	4/16																	
TUE	4/17	22	21		6:45a	10:15a	3:50	3	12	0	1	1	1	0	0	0	0.5	
WED	4/18	26	19		6:45a	10:00a	3:25	1	11	0	3	0	3	0	0	0	0.25	
THU	4/19																	
FRI	4/20																	
Weekly	N/A	22	40				6.75	4	23	17	4	1	4	0	0	0	0.75	

Duty Days				Hours Worked (24-hh:mm)			Enforcement Summary														
Day	Date	Traffic Stops	Violations		START TIME	END TIME	Total Duty Hours	H.P.N.R.	Moving Violations	Non-Moving Violations	Verbal Warnings	School Zone	Home Owner Contact	Assist Agency APD-EMS-FD	Accidents	Assist Public	Extra Hours - Not Charged				
MON	4/23																				
TUE	4/24																				
WED	4/25	6	7		2:00p	6:00p	4.00	1	6	1	0	0	1	0	0	0	0				
THU	4/26																				
FRI	4/27																				
Subtotal	N/A	6	7				4.00	1	6	1	0	0	1	0	0	0	0				

Duty Days				Hours Worked (24-hh:mm)			Enforcement Summary														
Day	Date	Traffic Stops	Violations		START TIME	END TIME	Total Duty Hours	H.P. N.R.	Moving Violations	Non-Moving Violations	Verbal Warnings	School Zone	Home Owner Contact	Assist Agency APD-EMS-FD	Accidents	Assist Public	Extra Hours - Not Charged				
MON	4/30																				
TUE	5/1	11	17		6:45	10:15	3:50	4	10	7	0	0	1	0	0	0	0.5				
WED	5/2																				
THU	5/3																				
FRI	5/4																				
Friday	N.S.	11	17				3:50	4	10	7	0	0	1	0	0	0	0.5				

Duty Days				Hours Worked (24-hh:mm)			Enforcement Summary														
Day	Date	Traffic Stops	Violations		START TIME	END TIME	Total Duty Hours	H.P.N.R.	Moving Violations	Non-Moving Violations	Verbal Warnings	School Zone	Home Owner Contact	Assist Agency APD-EMS-FD	Accidents	Assist Public	Extra Hours - Not Charged				
MON	5/7																				
TUE	5/8																				
WED	5/9																				
THU	5/10	17	18		2:00p	8:00p	4:00	3	13	5	0	0	2	0	0	0	0				
FRI	5/11	8	12		6:45a	9:00a	2:25	2	7	6	4	5	2	0	1	0	0.25				

Highland Park West Balcones Area  
2018 Constable Patrol  
Year End Report

Duty Days				Hours Worked (24-hh:mm)			Enforcement Summary												
Day	Date	Traffic Stops	Violations	START TIME	END TIME	Total Duty Hours	H.P.N.R.	Moving Violations	Non-Moving Violations	Verbal Warnings	School Zone	Home Owner Contact	Assist Agency APD-EMS-FD	Accidents	Assist Public	Extra Hours - Not Charged			
MON	5/14																		
TUE	5/15																		
WED	5/16																		
THU	5/17	14	18	2:00p	6:00p	4.00	5	14	4	1	0	2	0	0	0	0			
FRI	5/18																		
		14	18			4.00	5	14	4	1	0	2	0	0	0	0			

Duty Days				Hours Worked (24-hh:mm)			Enforcement Summary												
Day	Date	Traffic Stops	Violations	START TIME	END TIME	Total Duty Hours	H.P.N.R.	Moving Violations	Non-Moving Violations	Verbal Warnings	School Zone	Home Owner Contact	Assist Agency APD-EMS-FD	Accidents	Assist Public	Extra Hours - Not Charged			
MON	5/21																		
TUE	5/22																		
WED	5/23																		
THU	5/24	10	4	2:00p	6:00p	4.00	3	9	5	2	4	2	0	0	1	0			
FRI	5/25																		
		10	4			4.00	3	9	5	2	4	2	0	0	1	0			

Duty Days				Hours Worked (24-hh:mm)			Enforcement Summary												
Day	Date	Traffic Stops	Violations	START TIME	END TIME	Total Duty Hours	H.P.N.R.	Moving Violations	Non-Moving Violations	Verbal Warnings	School Zone	Home Owner Contact	Assist Agency APD-EMS-FD	Accidents	Assist Public	Extra Hours - Not Charged			
MON	5/28																		
TUE	5/29	4	10	8:00a	9:15a	2.00	3	9	1	2	2	1	0	0	1	0.25			
WED	5/30	15	20	2:00p	6:00p	4.00	2	17	3	3	5	2	0	0	0	0			
THU	5/31																		
FRI	6/1																		
		24	30			6.00	5	26	4	5	7	3	0	0	1	0.25			

Duty Days				Hours Worked (24-hh:mm)			Enforcement Summary												
Day	Date	Traffic Stops	Violations	START TIME	END TIME	Total Duty Hours	H.P.N.R.	Moving Violations	Non-Moving Violations	Verbal Warnings	School Zone	Home Owner Contact	Assist Agency APD-EMS-FD	Accidents	Assist Public	Extra Hours - Not Charged			
MON	6/4																		
TUE	6/5																		
WED	6/6	16	24	7:00a	10:00a	3.00	4	16	8	0	0	0	0	0	0	0			
THU	6/7																		
FRI	6/8																		
		16	24			3.00	4	16	8	0	0	0	0	0	0	0			



## Highland Park West Balcones Area 2018 Constable Patrol Year End Report

Duty Days				Hours Worked (24-hh:mm)			Enforcement Summary														
Day	Date	Traffic Stops	Violations		START TIME	END TIME	Total Duty Hours	H.P.N.R.	Moving Violations	Non-Moving Violations	Verbal Warnings	School Zone	Home Owner Contact	Assist Agency APD-EMS-FD	Accidents	Assist Public	Extra Hours - Not Charged				
MON	6/11																				
TUE	6/12	10			7:00a	10:00a	3.00	2	8	2	0	0	0	0	0	0	0				
WED	6/13																				
THU	6/14																				
FRI	6/15																				
							3.00	2	8	2	0	0	0	0	0	0	0				

Duty Days				Hours Worked (24-hh:mm)			Enforcement Summary														
Day	Date	Traffic Stops	Violations		START TIME	END TIME	Total Duty Hours	H.P.N.R.	Moving Violations	Non-Moving Violations	Verbal Warnings	School Zone	Home Owner Contact	Assist Agency APD-EMS-FD	Accidents	Assist Public	Extra Hours - Not Charged				
MON	6/18																				
TUE	6/19																				
WED	6/20	11	13		2:00p	6:00p	4.00	5	10	3	0	0	2	0	0	0	0				
THU	6/21																				
FRI	6/22																				
Totals	N/A	11	13				4.00	5	10	3	0	0	2	0	0	0	0				

Duty Days				Hours Worked (24-hh:mm)			Enforcement Summary														
Day	Date	Traffic Stops	Violations		START TIME	END TIME	Total Duty Hours	H.P.N.R.	Moving Violations	Non-Moving Violations	Verbal Warnings	School Zone	Home Owner Contact	Assist Agency APD-EMS-FD	Accidents	Assist Public	Extra Hours - Not Charged				
MON	7/9																				
TUE	7/10																				
WED	7/11																				
THU	7/12	7	8		7:00a	9:00a	2:00	2	7	1	0	0	1	0	0	0	0				
FRI	7/13																				
Total	N/A	7	8				2:00	2	7	1	0	0	1	0	0	0	0				

Duty Days		Hours Worked (24-hh:mm)				Enforcement Summary														
Day	Date	Traffic Stops	Violations	START TIME	END TIME	Total Duty Hours	H.P.N.R.	Moving Violations	Non-Moving Violations	Verbal Warnings	School Zone	Home Owner Contact	Assist Agency APD-EMS-FD	Accidents	Assist Public	Extra Hours - Not Charged				
MON	7/16																			
TUE	7/17																			
WED	7/18																			
THU	7/19		18	2:00p	6:00p	4:00	3	14	4	0	0	0	0	0	0	0				
FRI	7/20																			
Totals	N.R.	13	18			4.00	3	14	4	0	0	0	0	0	0	0				

## Highland Park West Balcones Area 2018 Constable Patrol Year End Report

Duty Days				Hours Worked (24-hh:mm)			Enforcement Summary														
Day	Date	Traffic Stops	Violations		START TIME	END TIME	Total Duty Hours	H.P.N.R.	Moving Violations	Non-Moving Violations	Verbal Warnings	School Zone	Home Owner Contact	Assist Agency APD-EMS-FD	Accidents	Assist Public	Extra Hours - Not Charged				
MON	7/23																				
TUE	7/24	7	8		7:00a	9:00a	2:00	2	7	1	0	0	0	0	0	0	0				
WED	7/25																				
THU	7/26																				
FRI	7/27																				
Running	N/C	7	8				2.00	2	7	1	0	0	0	0	0	0	0				

Duty Days				Hours Worked (24-hh:mm)			Enforcement Summary											Extra Hours - Not Charged				
Day	Date	Traffic Stops	Violations	START TIME	END TIME	Total Duty Hours	H.P.N.R.	Moving Violations	Non-Moving Violations	Verbal Warnings	School Zone	Home Owner Contact	Assist Agency APD-EMS-FD	Accidents	Assist Public							
MON	7/30																					
TUE	7/31																					
WED	8/1	8	9	6:46a	9:00a	2.25	1	8	1	0	0	1	0	0	1	0.25						
THU	8/2																					
FRI	8/3																					
Subtotal	W.E.	8	9			2.25	1	8	1	0	0	1	0	0	1	0.25						

Duty Days				Hours Worked (24-hh:mm)			Enforcement Summary														
Day	Date	Traffic Stops	Violations		START TIME	END TIME	Total Duty Hours	H.P.N.R.	Moving Violations	Non-Moving Violations	Verbal Warnings	School Zone	Home Owner Contact	Assist Agency APD-EMS-FD	Accidents	Assist Public	Extra Hours - Not Charged				
MON	8/20	35	12		8:45a	9am	2.00	3	10	3	6	5	4	0	0	0	0.25				
MON	8/20	37	19		2pm	6pm	4.00	5	16	3	7	7	4	0	0	0	0				
TUES	8/21																				
WED	8/22																				
THU	8/23																				
FRI	8/24	9	13		2:00p	6:00p	4.00	2	8	5	2	2	1	0	0	0	0				
		36	44				10.00	10	34	10	14	14	9	0	0	0	0.25				

Duty Days		Hours Worked (24-hh:mm)			Enforcement Summary																
Day	Date	Traffic Stops	Violations		START TIME	END TIME	Total Duty Hours	H.P.N.R.	Moving Violations	Non-Moving Violations	Verbal Warnings	School Zone	Home Owner Contact	Assist Agency APD-EMS-FD	Accidents	Assist Public	Extra Hours - Not Charged				
MON	8/27																				
TUES	8/28	6	7		7:00a	9:00a	2.00	2	6	1	1	1	0	0	0	0	0				
WED	8/29	14	16		2:00p	6:00p	4.00	5	14	2	0	0	1	0	0	0	0				
THU	8/30																				
FRI	8/31																				



Highland Park West Balcones Area  
2018 Constable Patrol  
Year End Report

Duty Days				Hours Worked (24-hh:mm)			Enforcement Summary												Extra	Hours - Not					
Day	Date	Traffic Stops	Violations	START TIME	END TIME	Total Duty Hours	H.P.N.R.	Moving Violations	Non-Moving Violations	Verbal Warnings	School Zone	Home Owner Contact	Assist Agency	APD-EMS	Accidents	Assist Public									
MON	9/3																								
TUES	9/4																								
WED	9/5																								
THU	9/6	15	17	2:00p	6:00p	4.00	4	15	2	2	2	3	0	0	0	0									
FRI	9/7																								

Duty Days				Hours Worked (24-hh:mm)			Enforcement Summary											Extra Hours - Not Charged				
Day	Date	Traffic Stops	Violations	START TIME	END TIME	Total Duty Hours	H.P.N.R.	Moving Violations	Non-Moving Violations	Verbal Warnings	School Zone	Home Owner Contact	Assist Agency APD-EMS-FD	Accidents	Assist Public							
MON	9/10																					
TUE	9/11	5	8	6:46a	9:00a	2.00	2	6	2	1	2	3	0	0	0	0.25						
WED	9/12	13	21	2:00p	6:00p	4.00	4	12	9	0	1	1	0	0	0	0						
THU	9/13																					
FRI	9/14																					

Duty Days				Hours Worked (24-hh:mm)			Enforcement Summary											Extra Hours - Not Charged				
Day	Date	Traffic Stops	Violations		START TIME	END TIME	Total Duty Hours	H.P.N.R.	Moving Violations	Non-Moving Violations	Verbal Warnings	School Zone	Home Owner Contact	Assist Agency APD-EMS-FD	Accidents	Assist Public						
MON	9/17																					
TUE	9/18		17		2:00p	6:00p	4.00	3	10	7	0	0	1	0	0	0	0					
WED	9/19																					
THU	9/20																					
FRI	9/21		13		7:00a	9:00a	2.00	3	7	6	4	5	1	0	0	0	0					
Patrol	H.S.	19	30				6.00	6	17	13	4	5	2	0	0	0	0					

Duty Days				Hours Worked (24-hh:mm)			Enforcement Summary											Extra Hours - Not Charged				
Day	Date	Traffic Stops	Violations		START TIME	END TIME	Total Duty Hours	H.P.N.R.	Moving Violations	Non-Moving Violations	Verbal Warnings	School Zone	Home Owner Contact	Assist Agency APD-EMS-FD	Accidents	Assist Public						
MON	9/24																					
TUE	9/25																					
WED	9/26	15	16		2:00p	8:00p	4.00	3	15	1	4	4	2	0	0	0	0					
THU	9/27																					
FRI	9/28	7	7		7:00a	9:00a	2.00	1	6	1	3	3	1	0	0	0	0					
</																						

Highland Park West Balcones Area  
2018 Constable Patrol  
Year End Report

Duty Days				Hours Worked (24-hh:mm)			Enforcement Summary														
Day	Date	Traffic Stops	Violations		START TIME	END TIME	Total Duty Hours	H.P.N.R.	Moving Violations	Non-Moving Violations	Verbal Warnings	School Zone	Home Owner Contact	Assist Agency APD-EMS-FD	Accidents	Assist Public	Extra Hours - Not Charged				
MON	10/1																				
TUE	10/2	11	3		2:00p	6:00p	4.00	2	10	3	3	3	1	0	0	0	0				
WED	10/3	15	17		2:00p	6:00p	4.00	4	11	6	6	3	1	0	0	0	0				
THU	10/4																				
FRI	10/5																				
Subtotal	H.S.	26	20				6.00	6	21	9	8	6	2	0	0	0	0				

Duty Days				Hours Worked (24-hh:mm)			Enforcement Summary														
Day	Date	Traffic Stops	Violations		START TIME	END TIME	Total Duty Hours	H.P.N.R.	Moving Violations	Non-Moving Violations	Verbal Warnings	School Zone	Home Owner Contact	Assist Agency APD-EMS-FD	Accidents	Assist Public	Extra Hours - Not Charged				
MON	10/8																				
TUE	10/9																				
WED	10/10	7	10		6:45a	7:00a	2.00	1	7	3	0	0	1	0	0	0	0.25				
THU	10/11																				
FRI	10/12	11	12		2:00p	6:00p	4.00	3	10	2	0	0	0	0	0	0	0				
Subtotal	H.S.	18	22				6.00	4	17	5	0	0	1	0	0	0	0.25				

Duty Days				Hours Worked (24-hh:mm)			Enforcement Summary														
Day	Date	Traffic Stops	Violations		START TIME	END TIME	Total Duty Hours	H.P.N.R.	Moving Violations	Non-Moving Violations	Verbal Warnings	School Zone	Home Owner Contact	Assist Agency APD-EMS-FD	Accidents	Assist Public	Extra Hours - Not Charged				
MON	10/15																				
TUE	10/16																				
WED	10/17	13	14		2:00p	6:00p	4.00	2	10	4	4	4	2	0	0	0	0				
THU	10/18	7	8		6:45a	9:00a	2.00	3	7	1	0	0	0	0	0	0	0.25				
FRI	10/19																				

Duty Days			Hours Worked (24-hh:mm)			Enforcement Summary															
Day	Date	Traffic Stops	Violations		START TIME	END TIME	Total Duty Hours	H.P.N.R.	Moving Violations	Non-Moving Violations	Verbal Warnings	School Zone	Home Owner Contact	Assist Agency APD-EMS-FD	Accidents	Assist Public	Extra Hours - Not Charged				
MON	10/22	8	8				2.00						Meeting								
TUE	10/23	12	17		2:00p	6:00p	4.00	3	12	5	7	7	1	0	0	0	0				
WED	10/24																				
THU	10/25																				
FRI	10/26																				
Subtotal	H.S.	12	17				6.00	3	12	5	7	7	1	0	0	0	0				



## Highland Park West Balcones Area 2018 Constable Patrol Year End Report

Duty Days				Hours Worked (24-hh:mm)			Enforcement Summary										Extra Hours - Not Charged				
Day	Date	Traffic Stops	Violations	START TIME	END TIME	Total Duty Hours	H.P.N.R.	Moving Violations	Non-Moving Violations	Verbal Warnings	School Zone	Home Owner Contact	Assist Agency APO-EMS-FD	Accidents	Assist Public						
MON	10/29																				
TUE	10/30																				
WED	10/31																				
THU	11/1																				
FRI	11/2				6:50a	9:00a	2.00	0	0	0	1	0	0	0	0	0					
SAT	11/3																				
SUN	11/4																				
TOTAL	N.S.	5	5			2.00	0	5	0	0	1	0	0	0	0	0					

Duty Days				Hours Worked (24-hh:mm)			Enforcement Summary													
Day	Date	Traffic Stops	Violations	START TIME	END TIME	Total Duty Hours	H.P.N.R.	Moving Violations	Non-Moving Violations	Verbal Warnings	School Zone	Home Owner Contact	Assist Agency APD-EMS-FD	Accidents	Assist Public	Extra Hours - Not Charged				
MON	11/5	13	18	2:00p	8:00p	4.00	2	11	7	4	6	3	0	0	0	0				
TUE	11/6																			
WED	11/7																			
THU	11/8																			
FRI	11/9																			
TOTAL	11/5-11/9	13	18			4.00	2	11	7	4	6	3	0	0	0	0				

Duty Days				Hours Worked (24-hh:mm)			Enforcement Summary													
Day	Date	Traffic Stops	Violations		START TIME	END TIME	Total Duty Hours	H.P.N.R.	Moving Violations	Non-Moving Violations	Verbal Warnings	School Zone	Home Owner Contact	Assist Agency APD-EMS-FD	Accidents	Assist Public	Extra Hours - Not Charged			
MON	11/12																			
TUE	11/13	18	19		2pm	6pm	4.00	4	14	5	0	0	2	0	0	0	0			
WED	11/14																			
THU	11/15																			
FRI	11/16																			
SAT	11/17																			
SUN	11/18																			
TOTAL		18	19				4.00	4	14	5	0	0	2	0	0	0	0			

Duty Days			Hours Worked (24-hh:mm)			Enforcement Summary															
Day	Date	Traffic Stops	Violations		START TIME	END TIME	Total Duty Hours	H.P.N.R.	Moving Violations	Non-Moving Violations	Verbal Warnings	School Zone	Home Owner Contact	Assist Agency APD-EMS-FD	Accidents	Assist Public	Extra Hours - Not Charged				
MON	11/19																				
TUE	11/20																				
WED	11/21	6	6		6:50a	9:00a	2:00	1	0	1	0	0	0	0	0	0					
THU	11/22																				
FRI	11/23																				
Subtotal	N/A	6	6				2:00	1	5	1	0	0	0	0	0	0	0				

Highland Park West Balcones Area  
2018 Constable Patrol  
Year End Report

Duty Days				Hours Worked (24-hh:mm)			Enforcement Summary														
Day	Date	Traffic Stops	Violations		START TIME	END TIME	Total Duty Hours	H.P.N.R.	Moving Violations	Non-Moving Violations	Verbal Warnings	School Zone	Home Owner Contact	Assist Agency APD-EMS-FD	Accidents	Assist Public	Extra Hours - Not Charged				
MON	11/26																				
TUE	11/27	10	10		7:00a	9:00a	2.00	2	6	4	1	5	1	0	0	0	0				
WED	11/28																				
THU	11/29																				
FRI	11/30	17	20		2:00p	6:00p	4.00	4	16	4	2	5	1	0	0	0	0				
Subtotal	N.S.	27	30				6.00	6	22	8	3	10	2	0	0	0	0				

Duty Days				Hours Worked (24-hh:mm)			Enforcement Summary															
Day	Date	Traffic Stops	Violations		START TIME	END TIME	Total Duty Hours	H.P.N.R.	Moving Violations	Non-Moving Violations	Verbal Warnings	School Zone	Home Owner Contact	Assist Agency APD-EMS-FD	Accidents	Assist Public	Extra Hours - Not Charged					
MON	12/3																					
TUE	12/4																					
WED	12/5	6	6		7am	9am	2.00	1	6	0	0	0	0	0	0	0	0					
THU	12/6																					
FRI	12/7																					
Subtotal	N.S.	6	6				2.00	1	6	0	0	0	0	0	0	0	0					

Duty Days				Hours Worked (24-hh:mm)			Enforcement Summary														
Day	Date	Traffic Stops	Violations		START TIME	END TIME	Total Duty Hours	H.P.N.R.	Moving Violations	Non-Moving Violations	Verbal Warnings	School Zone	Home Owner Contact	Assist Agency APD-EMS-FD	Accidents	Assist Public	Extra Hours - Not Charged				
MON	12/10																				
TUE	12/11																				
WED	12/12	15	18		2:00p	6:15p	4.00	4	15	3	0	0	4	0	1	1	0.25				
THU	12/13																				
FRI	12/14																				
Subtotal	N.S.	15	18				4.00	4	15	3	0	0	4	0	1	1	0.25				

Duty Days				Hours Worked (24-hh:mm)			Enforcement Summary														
Day	Date	Traffic Stops	Violations	START TIME	END TIME	Total Duty Hours	H.P.N.R.	Moving Violations	Non-Moving Violations	Verbal Warnings	School Zone	Home Owner Contact	Assist Agency APD-EMS-FD	Accidents	Assist Public	Extra Hours - Not Charged					
MON	12/17																				
TUE	12/18																				
WED	12/19																				
THU	12/20	7	11	2:00p	6:15p	4.25	2	6	5	4	4	3	1	1	0	0.25					
FRI	12/21																				
Subtotal	N.S.	7	11			4.25	2	6	5	4	4	3	1	1	0	0.25					



## Highland Park West Balcones Area 2018 Constable Patrol Year End Report

Duty Days				Hours Worked (24-hh:mm)			Enforcement Summary														
Day	Date	Traffic Stops	Violations		START TIME	END TIME	Total Duty Hours	H.P.N.R.	Moving Violations	Non-Moving Violations	Verbal Warnings	School Zone	Home Owner Contact	Assist Agency APD-EMS-FD	Accidents	Assist Public	Extra Hours - Not Charged				
MON	12/24																				
TUE	12/25																				
WED	12/26																				
THU	12/27				7:00a	9:00a	2.00	0	4	0	0	0	0	0	0	0					
FRI	12/28																				
TOTAL	N.E.	4	4				2.00	0	4	0	0	0	0	0	0	0	0				

Balcones at Madrona (stop sign) X1 / 4300 Balcones X1 / 3900 blk Balcones X1 / escorted 2 young boys on small electric motor bikes from Shadow Ln, up Perry, down Balcones and then over to Crestway. Talked to both kids about not riding on the busy roadways and they need to go home./ stopped on Edgemont and talked with home owners and lots of kids playing in the yard and street.

MON	1/22	HP Patrol Log from 6:45am to 9am /
6:45am to 7am I drove around the neighborhood -everything checked ok / Radar 3200 blk Hancock X2 / subject stopped for speeding in the 3200 blk & also for speeding on Hancock in the 2900 block, plus 3 other violations / worked school zone by Sunny Ln (near cross walk) / Valley Oak at W. Highland Terr X2 3300 Blk Perry X1 / 3100 blk of W. Highland Terr Speeding X1		

WED	1/24	HP Patrol Log from 6:45a to 9am / did roving patrol thru area from 6:45am to 7:05a / 3200 blk Hancock (radar) X4 / worked school zone on North end near cross walk & Sunny Ln. 3300 blk Perry (radar) X3 / Valley Oak at W. Highland Terr (Stop signs) X1
-----	------	---

WED	1/31	HP Patrol Log from 2pm to 6:15pm /
3200 blk Hancock radar - X3 / school zone from 335pm to 310pm - gave 3 warnings for non-moving violations / 3900 Blk Balcones at Edgemont - radar X1 talked with home owner / 4500 blk Madrone talked with hm owner / 3300 blk Perry radar X2 talked with home owner of house I was sitting in front of. He was thankful I was working radar on Perry Ln / Valley Oak at W. Highland Terr - Stop signs X1 / 3200 Blk Hancock - golf cart on public roadway - warning given		

FRI	2/2	HP Patrol log from 6:45am to 9am /
roving patrol thru HP neighborhood / traffic hazard at Mount Bonnell Park, 2 vehicle sticking out into the roadway. Vehicles moved out of the road. /		
3200 blk Hancock -Radar X2 / school zone 3 warnings for non moving violations. I was thanked by several people for being in the school zone and helping make it safe. / 3300 blk Perry -Radar X2 / Valley oak at W. Highland Terr -Stop signs X1 / roving patrol thru area east of MoPac		

FRJ	2/9	HP Patrol log from 2:00pm to 6pm /
3200 Blk Hancock - Radar X5 / School Zone (North end by Sunny Ln) / Valley Oak at W. Highland Terr. Stop signs X1 and Speeding X1		
/ 3300 Blk Perry Radar - X2 / Balcones at Madrona Stop Signs X1 / Madrona at Glen Rose - Stop Sign X1 / 3900 Blk Balcones radar X0		
/ 4900 Blk Fairview (driving wrong way) X1		

TUE	2/13	HP Patrol 6:45am to 9am
<p>while driving thru HP (dark, cold &amp; raining) I saw a small white dog running loose with a 4 foot leash on Perry and Balcones Dr. I was able to catch the dog and secure him in my patrol car. I contacted the owner, who was at work. I took the dog back to her house and put him in the garage with a bed, water &amp; food.</p> <p>While leaving the yard, I located a dead animal and notified the property owner of the deceased animal in the flower bed. I then went to work the last few mins of the school zone. / 3200 blk Hancock -radar X1</p>		

WED	2/14	HP Patrol 7:15am to 8:15am (no charge for time)
worked school zone north end of fairview this morning, the weather was very foggy, misting rain and cold.		
4900 blk fairview X1 / Valley Oak at Perry Ln X1		

FRU	2/16	HP Patrol log from 2:00pm to 6pm
3200 blk Hancock Radar X6 / 3300 blk Perry Radar X2 / 3900 Blk Balcones Radar X0 / Valley Oak at Perry-Stop Sign X1		
Valley Oak at W. Highland Terr. Stop Sign X2		

TUE	2/26	HP Patrol 6:45am to 9:00am
3200 blk Hancock -Radar X4 / School zone / 3300 Blk Perry -Radar X2 / 3900 blk Balcones -Radar X2 / 5000 blk Fairview -wrong way X1 and one turkey walking around the 4500 blk of Edgemont /		

Valley Oak at W. Highland Terr - Stop Sign X2 / 3900 blk Balcones - Radar X0

TUE	2/27	HP Patrol 2pm to 6pm
3200 blk Hancock -Radar X2 / School zone -no crossing guard / 3300 Blk Perry -Radar X3 / Balcones at Mount Bonnell -Stop Sign X1 / Valley Oak at W. Highland Ter -Stop Sign X2 / 4300 blk Balcones Radar X1 / Balcones at Madrona -Stop Sign X1		

THU	3/1	HP Patrol from 6:35 am to 9:00 am / 3200 blk Hancock -radar X0 / 3300 blk Perry -radar X3 / Balcones at Madrona -Stop sign X1
THU	3/15	Thursday HP Patrol from 2:45pm to 6pm

3300 Blk Perry -Radar X2 / 2900 Blk Perry -Radar X2 / Balcones at Mount Bonnell -Stop Sign X1 / 3200 Blk Hancock -Radar X2  
Balcones at Madrona -Stop Sign X4 / checked the radar speed signs and most of them were not working / talked w/home owner on Perry (very happy)  
THURSDAY HP Patrol from 8pm to 1am - Special Patrol request for SXS

4900 blk Balcones -Radar X1 / Balcones at Madrona -Stop Sign X3									
MON	3/19	HP Patrol from 2pm to 6pm							
3200 blk Hancock -Radar X1 / School Zone / 3300 blk Perry Ln -Radar X2 / Valley Oak at W. Highland Terr -Stop Signs X3									

3900 Blk Balcones -Radar X1 / 2900 Blk Perry -Radar X1									
WED	3/21	HP Patrol from 7am to 9am							
3200 blk Hancock	-radar X2	School Zone	/	3300 blk Perry Ln	-Radar X2	/	Balcones at Madrona	-Stop signs	X0

**TUE 4/3 HP Patrol from 6:45a to 9am**  
**3200 blk Hancock -Radar X2 / School Zone - / 3300 Blk Perry Ln. -Radar X2 / 3900 blk Balcones -Radar X0**  
**Valley Oak at W.Highland - Stop Sign X2 / Roving patrol thru neighborhood**

WED	4/4	HP Patrol from 2pm to 6:15pm
3200 blk Hancock -Radar X3 / School Zone Speeding X1 - / 3300 Blk Perry Ln. -Radar X1 / 3900 blk Balcones -Radar X4		
4400 blk Balcones -Radar X1 / Balcones at Madrona Stop Sign X3 / Valley Oak at W. Highland Terr X1 /		





Friday, April 7, 2017 by [Chad Swiatecki](#) Austin Monitor

## Austin

# Downtown drug crisis pushes Adler, Council to pledge increased support

Austin's police and public health departments will have extra budget and other resources available soon to help them focus on ending an increase in the use of the synthetic drug K2 downtown.

At a press conference Thursday, Mayor Steve Adler was joined by several City Council members and assorted city department heads who have already seen the impact of the street drugs sold for \$5 a dose to the poor and homeless community centered around the Austin Resource Center for the Homeless.

The drug, which is often a cocktail of varying chemicals and compounds, typically leaves its users in a catatonic or zombielike state or can cause episodes of extreme violence and mania. News reports in recent weeks have [chronicled dozens of cases](#) per day of area emergency medical teams treating K2 users at ARCH, with many of those people requiring treatment at area hospitals for seizures, unconsciousness or other side effects.

Adler called the situation "our most immediate and largest crisis" and said he and Council will pass an emergency resolution to give police, emergency medical and public health departments the resources they need to curb the use of the drug among the homeless community.

"I have a message for our city manager, our police and our EMS, and that is – you tell us what you need, and we will get it for you," Adler said. "The mayor pro tem and I and colleagues on the Council plan to offer an emergency resolution that will very specifically support the ongoing effort of the manager and our public safety folks and first responders as well as (support) new efforts, including a public education campaign."

|| x \*  
+ +  
+ x

Last month, the proximity of ARCH to Austin's two well-known entertainment districts downtown created an environment in which K2 users who were suffering side effects that left them in an unresponsive, statuelike state were intermixed on city streets with confused onlookers from all over the world in town for South by Southwest. The increase in drug use around ARCH is one of a number of [issues creating concern](#) for owners of music venues and nightclubs in the Red River Cultural District.

Jason Dusterhoft, assistant chief of the Austin Police Department, said the department's focus is on arresting and penalizing dealers of the drug, which is typically sold in cigarette form, but that it takes months to chemically analyze materials seized during an arrest and then file charges. That lag time means sellers have to be released and can continue dealing or take measures to avoid capture.

"We're not going for (the) user, we're targeting the dealer," he said. "You have to find a person with K2, and from there it takes three to six months to analyze (the) drug."

Dusterhoft said the department has issued 104 warrants for K2 dealers in recent years, with 70 arrests. He said the department is working with ARCH to have officers on-site at all times to monitor for K2 deals.

"This is a crisis, and we're taking this seriously and putting a tremendous amount of resources into it," he said before later clarifying that there has been one documented death from K2 use in Austin, which happened in 2015.

Public health officials on hand said there has been a gradual increase in K2 use throughout Austin over the past five years, with its heaviest use concentrated around ARCH because the crowds of homeless people gathered outside represent an easy market to sell to. Adler said that dynamic shows why the city and outside organizations need to take steps to help the homeless community get back on their feet.

"These are Austinites, and we will be judged on how we help them," he said. "This is another example of why we need to deal with homelessness holistically in our community. They need our help, and they need our protection."

## Michael Levy

**From:** Austin Police Department <police3@austintexas.gov>  
**Sent:** Tuesday, March 5, 2019 2:02 PM  
**To:** Michael Levy  
**Subject:** News Release: Traffic Fatality #10

3/31

Email not displaying correctly? [View it in your browser.](#)



## City of Austin

AUSTIN POLICE DEPARTMENT



715 E. 8th St. Austin, Texas 78701 | (512) 974-5017 | [austintexas.gov/departments/police](http://austintexas.gov/departments/police)

### FOR IMMEDIATE RELEASE

March 5, 2019

Contact: Public Information Office, (512) 974-5017

Traffic Fatality #10

**Case:** 19-0581824

**Date:** February 27, 2019

**Time:** 10:25 p.m.

**Location:** East 7th Street and Springdale Road

**Deceased:** Javier Emanuel Niño Esparza, Hispanic male (D.O.B. 1/20/2000)

The preliminary investigation shows a white, 2000 Lexus RX300 was traveling eastbound on East 7<sup>th</sup> Street when the driver ran a red light and struck a grey, 2004 Volkswagen Golf moving northbound on Springdale Road. The force of

1 + +

the impact caused both the Lexus and Volkswagen to also strike a white, 2019 Jeep Cherokee that was stopped at the red light.

The driver of the Volkswagen Golf, Javier Emanuel Niño Esparza, was pronounced deceased at the scene.

The driver of the Lexus, Duane Harris, 29, was transported to a local hospital for treatment following the crash as were two other occupants from the vehicle. Harris has been charged with intoxication manslaughter.

**Duane Harris**



APD is investigating this case. Anyone with information regarding this case should call APD's Vehicular Homicide Unit Detectives at (512) 974-5594. You can also submit tips by downloading APD's mobile app, Austin PD, for free on iPhone and Android.

This is Austin's tenth fatal traffic crash of 2019, resulting in ten fatalities this year. At this time in 2018, there were ten fatal traffic crashes and eleven traffic fatalities.

**Michael Levy**

---

**From:** Austin Police Department <police3@austintexas.gov>  
**Sent:** Sunday, March 24, 2019 12:52 PM  
**To:** Michael Levy  
**Subject:** News Release: Homicide #6

Email not displaying correctly? [View it in your browser.](#)



## City of Austin

AUSTIN POLICE DEPARTMENT



715 E. 8th St. Austin, Texas 78701 | (512) 974-5017 | [austintexas.gov/departments/police](http://austintexas.gov/departments/police)

### FOR IMMEDIATE RELEASE

March 24, 2019

Contact: Public Information Office, (512) 974-5017

Homicide #6

**The APD Homicide Unit is continuing to actively work this case and is not available for interviews today.**

### Homicide #6

**Case:** 19-0830062

**Date:** Sunday, March 24, 2019

**Time:** 12:29 a.m.

**Location:** 1215 Southport Drive



**Deceased:** Benito Luna Vargas, H/M, DOB February 03, 1985

**Suspect 1:** Jessica Romero, H/F, 37 years of age

This morning at approximately 12:29, Austin 911 received numerous calls about a male who had been beaten and left unconscious. Police and EMS arrived on scene and began CPR. The victim, 34-year-old Benito Luna Vargas, was transported to St. David's South Austin Medical Center where, despite the efforts of medical staff, he succumbed to his injuries. Benito Vargas was pronounced deceased at 1:01 a.m.

Homicide investigators responded to the scene where they learned a second man had been assaulted during the same incident. He had also been transported to St. David's South Austin Medical Center where he was treated and released for his injuries.

Witnesses learned that Romero and two other suspects, one described as a heavysset Hispanic female in her late 20s to 30s and the other a heavysset Hispanic male in his late 40s to 50s, entered the residence and began assaulting the two victims while demanding valuables.

Romero is described as being approximately 5'7", 130 pounds and has a distinctive mole under her left nostril.

The Travis County Medical Examiner performed an autopsy this morning and determined the manner of death to be homicide.

Jessica Romero is currently charged with aggravated robbery in connection with this incident though all three suspects may face Capital Murder charges.

There is an active warrant for Jessica Romero and up to \$1,000 reward for information leading to her arrest.