

HISTORIC LANDMARK COMMISSION
APRIL 22, 2019
APPLICATION FOR A CERTIFICATE OF APPROPRIATENESS
LHD-2019-0012
SMOOT/TERRACE PARK HISTORIC DISTRICT
703 OAKLAND AVENUE

PROPOSAL

Demolish a ca. 1938 duplex.

PROJECT SPECIFICATIONS

Total demolition of contributing structure.

ARCHITECTURE

Two-story frame Colonial Revival building with paired doors beneath a covered entryway, horizontal wood siding, a side-gabled shingled roof with exposed rafter tails, and 6:6 wood windows; similar scale and fenestration patterns to the adjacent structures; appears to retain its original duplex configuration.

STANDARDS FOR REVIEW

The applicable Smoot/Terrace Park Historic District design standards include:

Alterations to Contributing Buildings

Do not alter or remove historic features unless they are deteriorated beyond repair.

The proposal is for total demolition of a contributing structure; as such, it does not comply with the district design standards.

COMMITTEE RECOMMENDATIONS


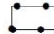

Not reviewed.

STAFF RECOMMENDATION

Deny the application, and encourage the applicant to consider solutions that do not involve demolition of the structure or removal of its character-defining features, per the Smoot/Terrace Park Historic District design standards.

LOCATION MAP



-  SUBJECT TRACT
-  PENDING CASE
-  ZONING BOUNDARY

1" = 333'

NOTIFICATIONS

CASE#: 703 OAKLAND AVE
LOCATION: 7 GREEN LN

This product is for informational purposes and may not have been prepared for or be suitable for legal, engineering, or surveying purposes. It does not represent an on-the-ground survey and represents only the approximate relative location of property boundaries.

This product has been produced by CTM for the sole purpose of geographic reference. No warranty is made by the City of Austin regarding specific accuracy or completeness.

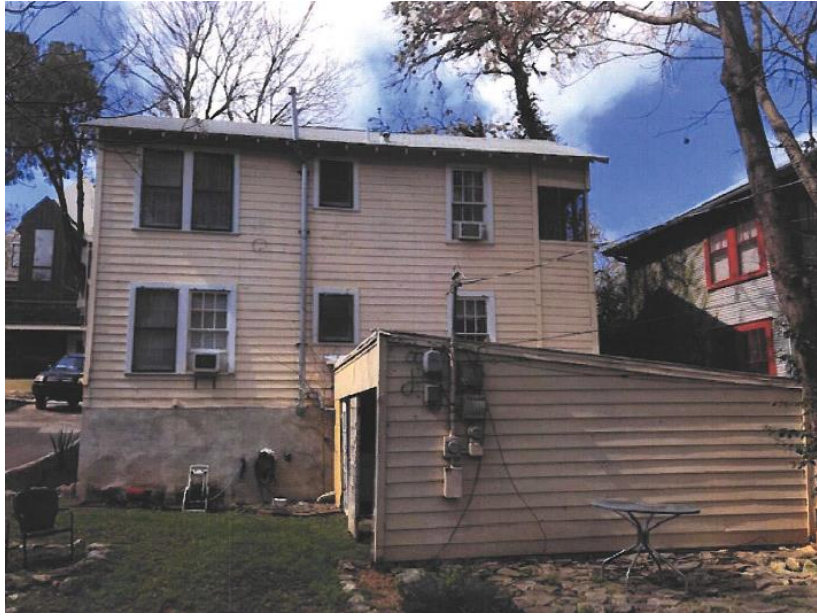


PROPERTY INFORMATION

Photos



Front



Rear